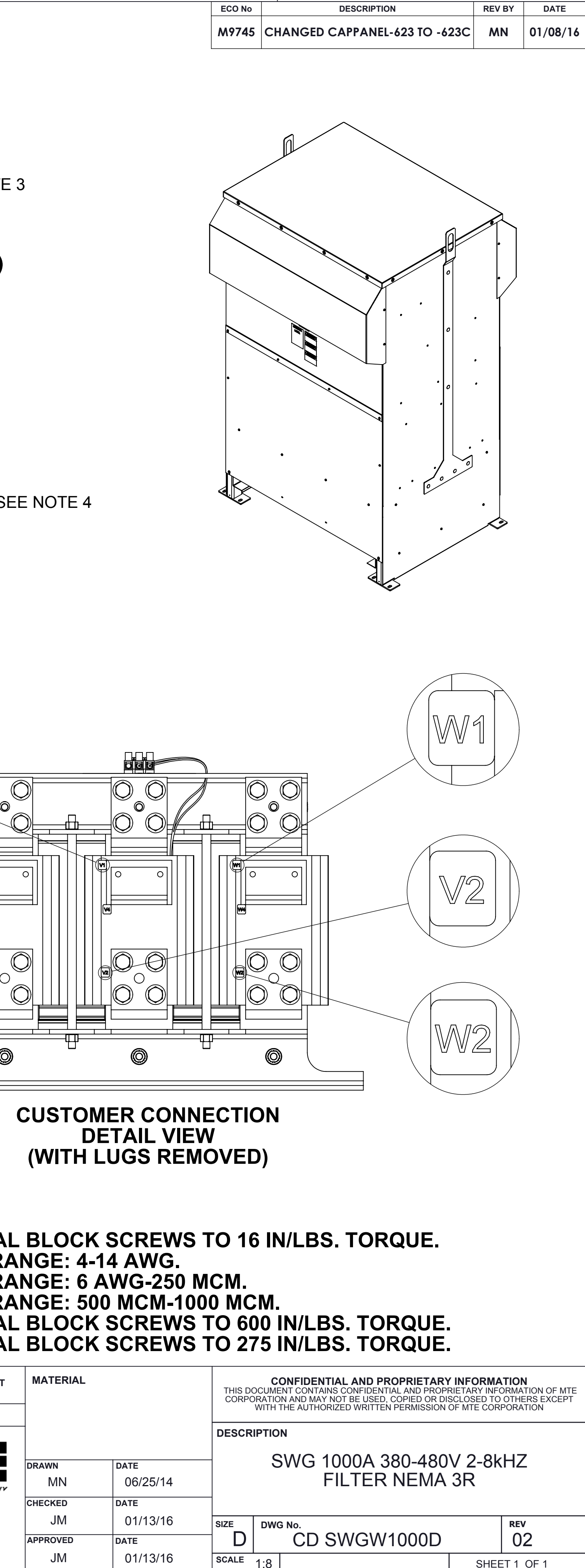
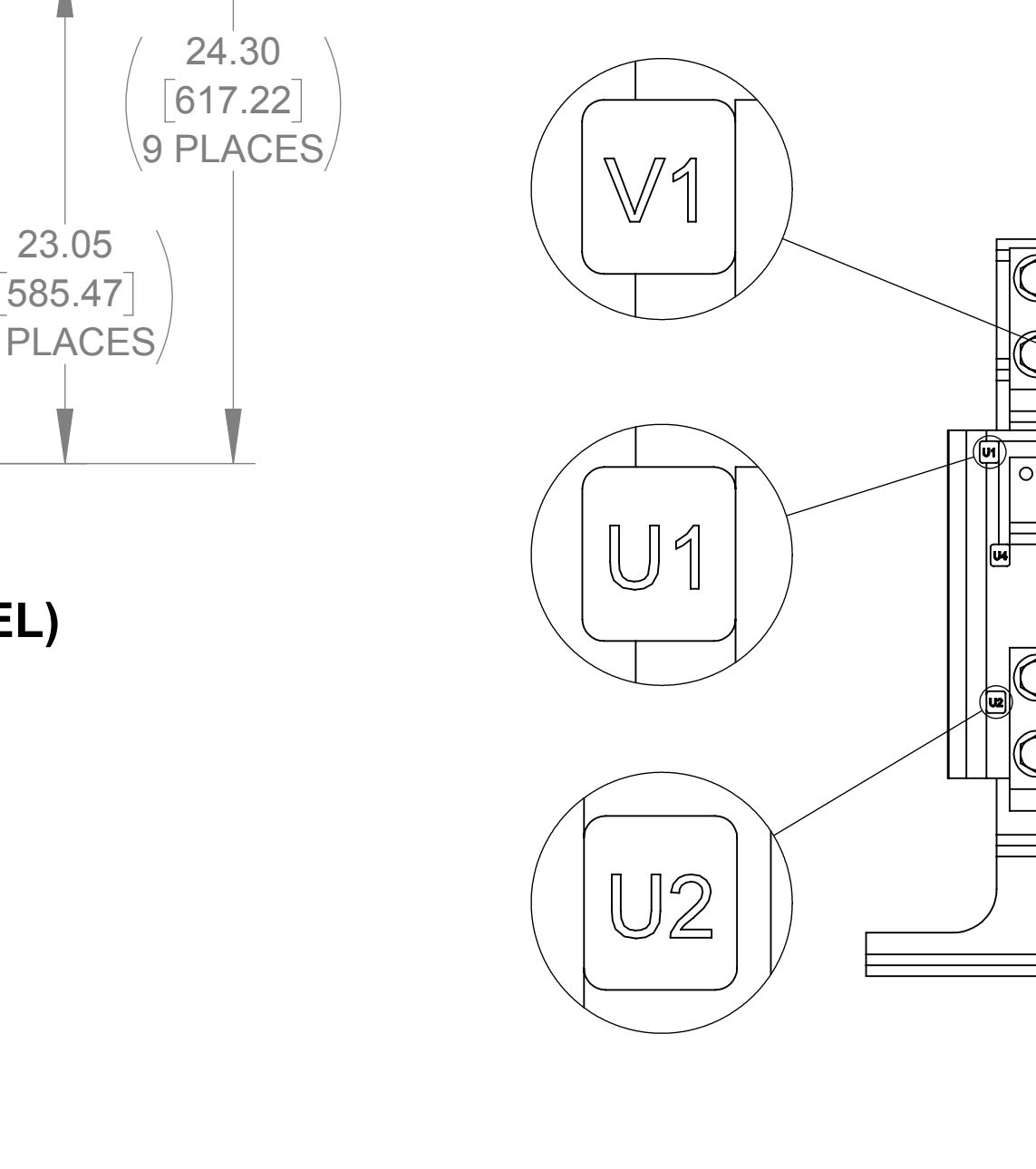
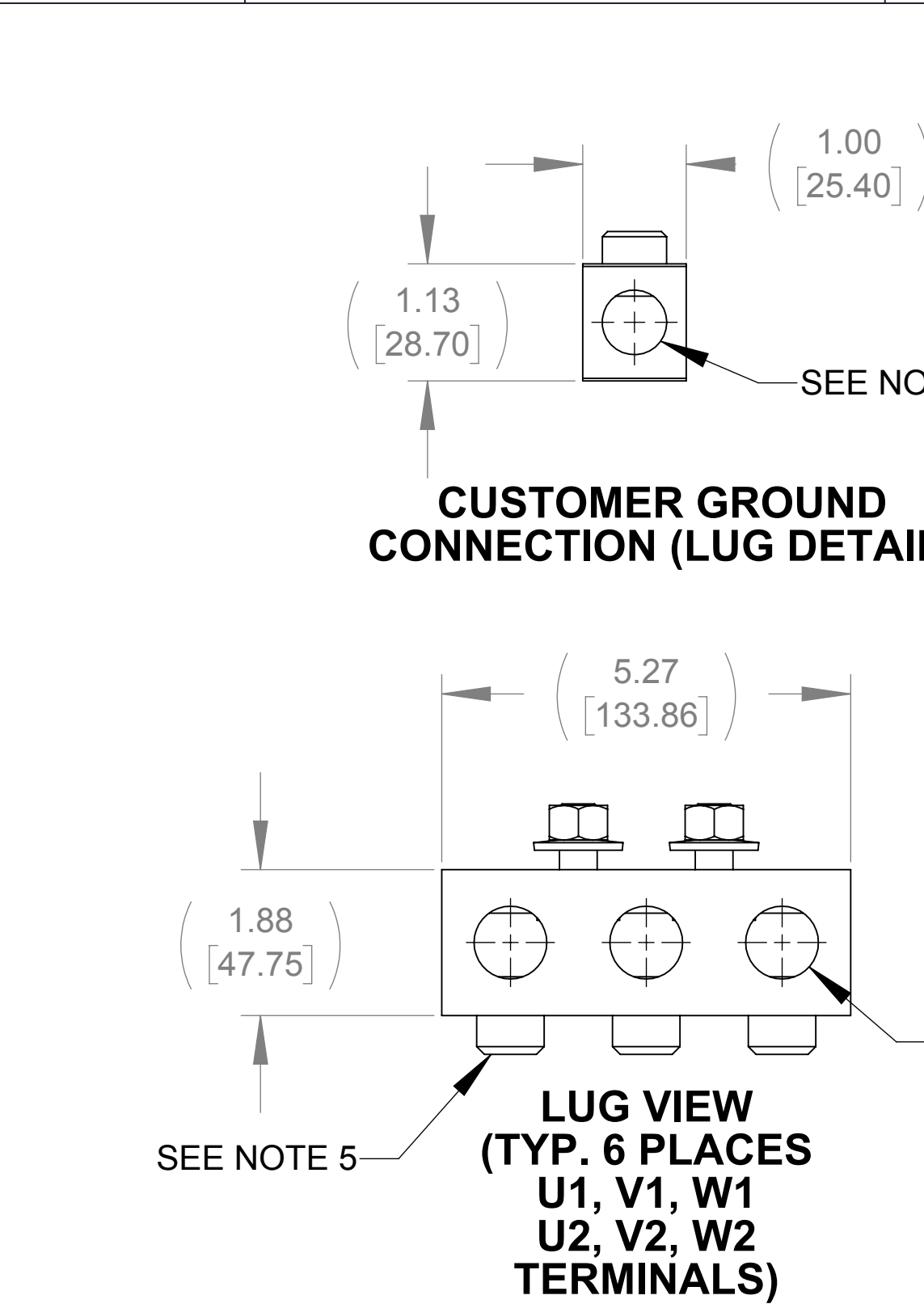
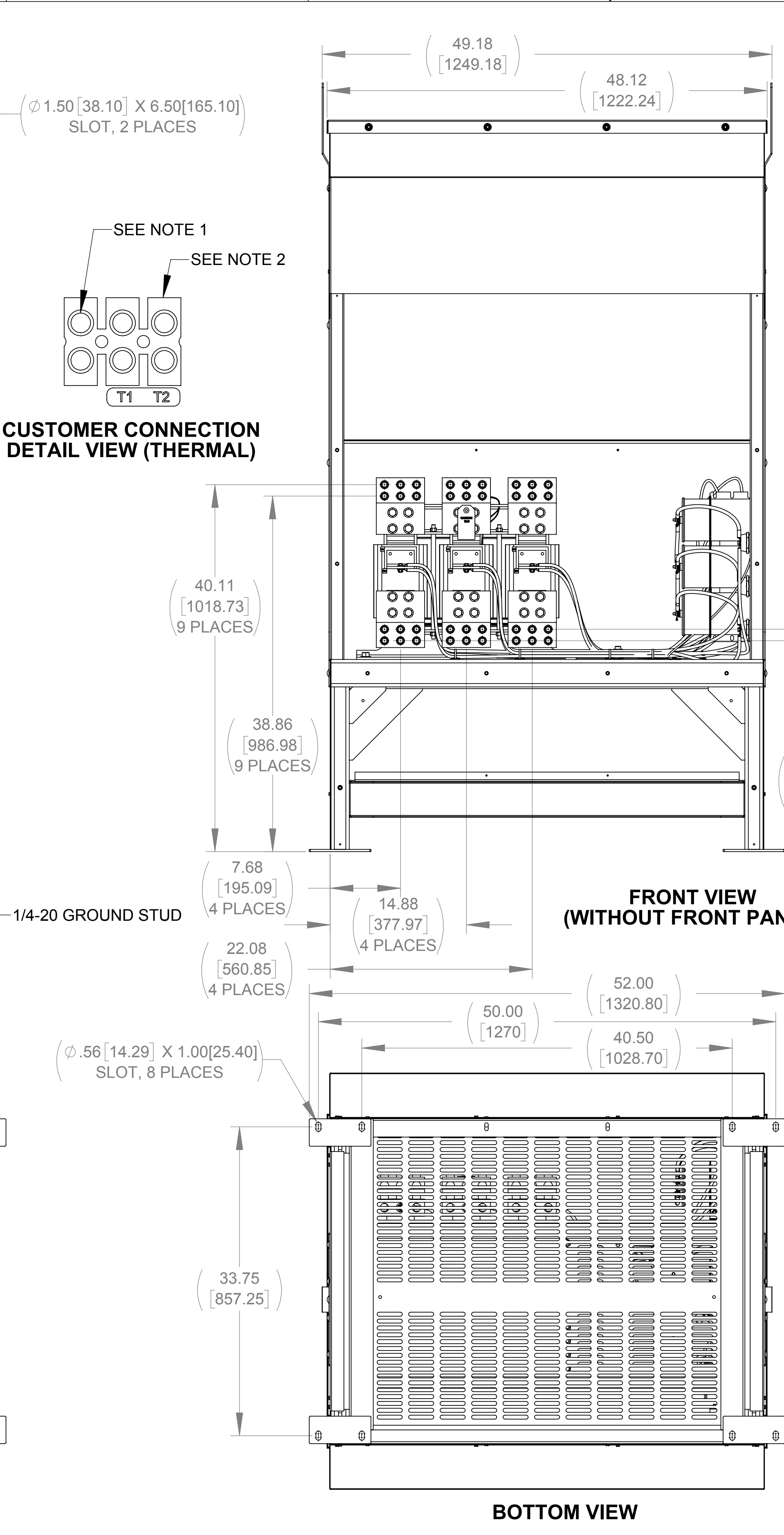
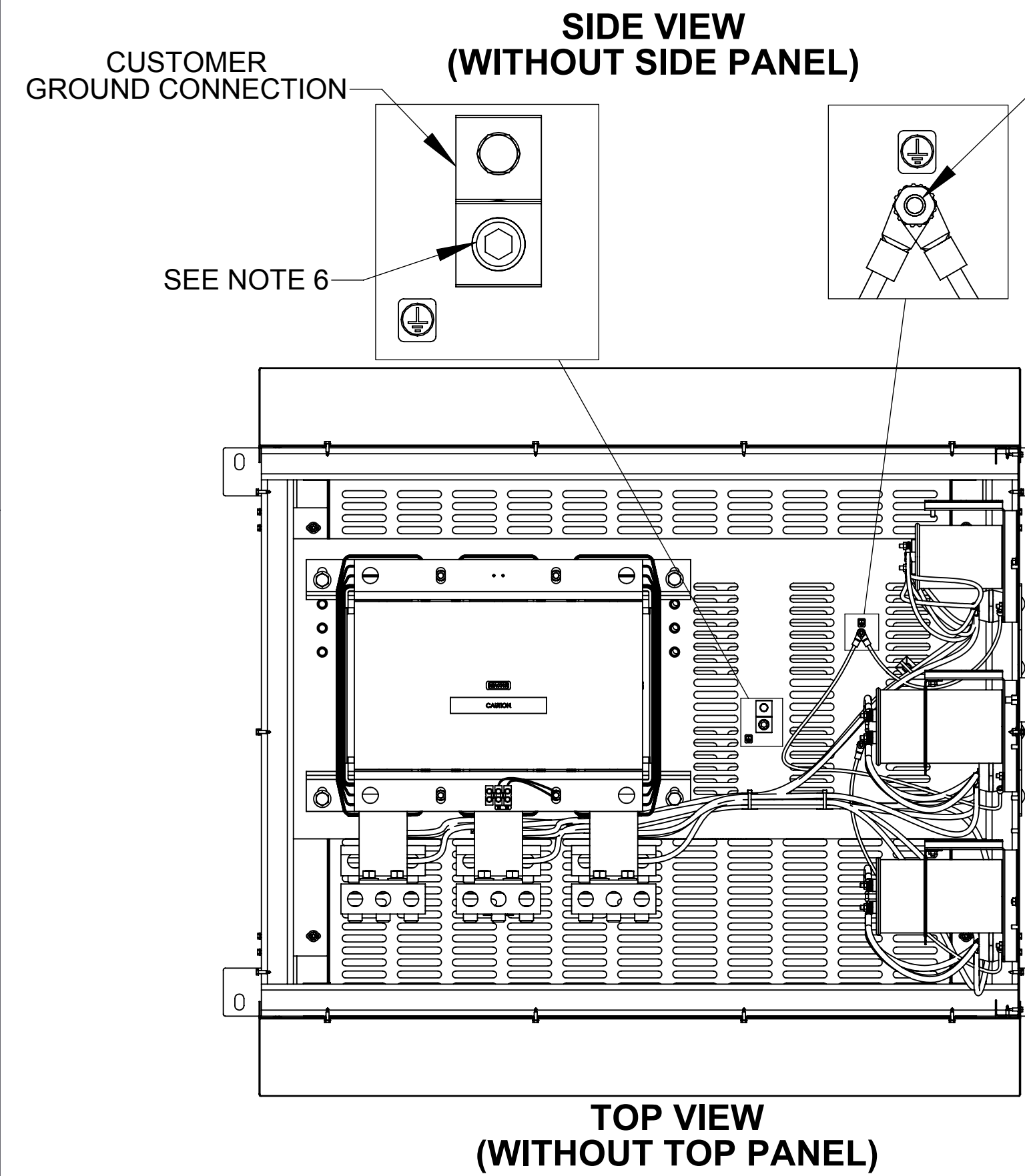
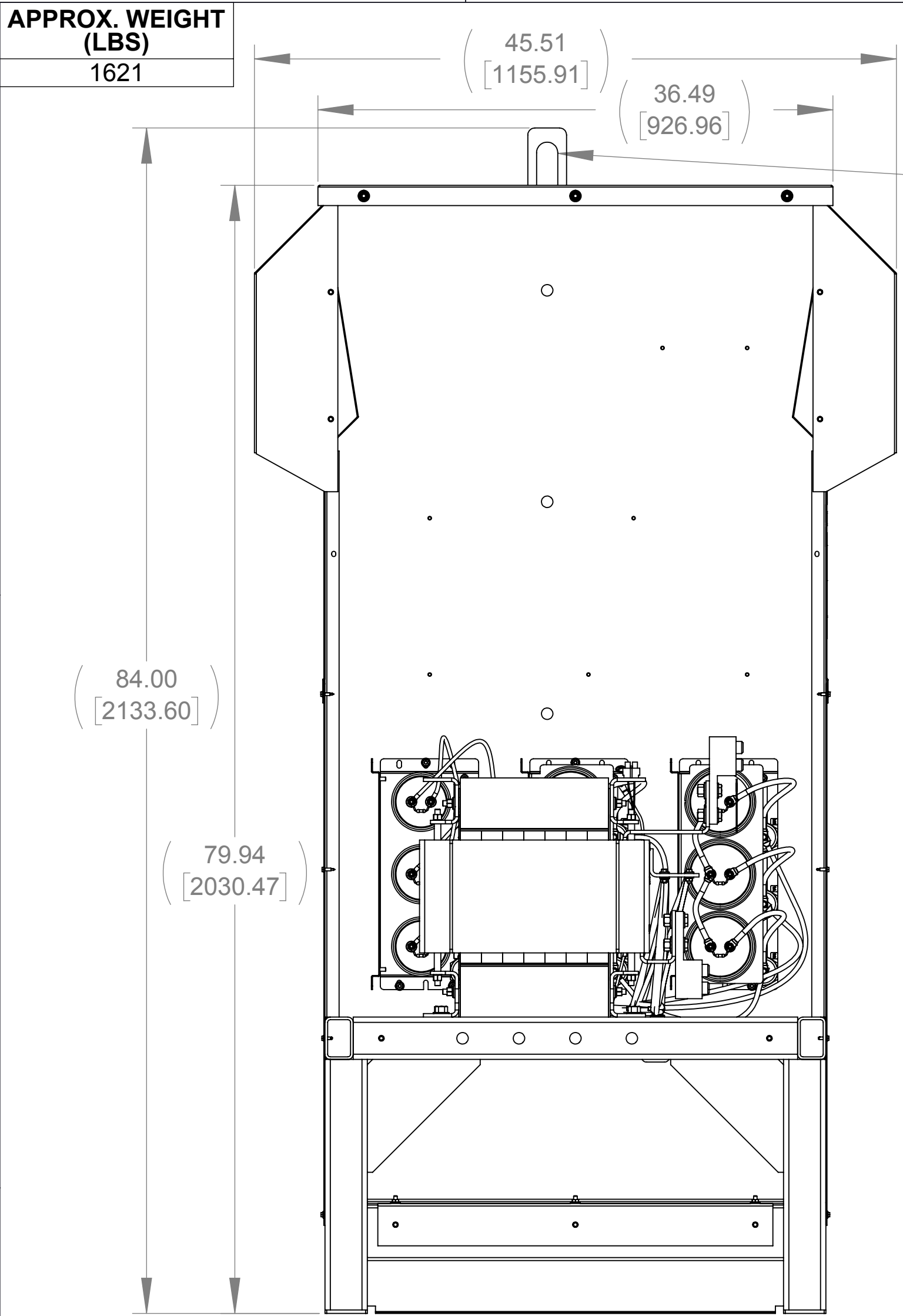


APPROX. WEIGHT
(LBS)
1621



- NOTES:**
1. TIGHTEN TERMINAL BLOCK SCREWS TO 16 IN/LBS. TORQUE.
 2. TERMINAL WIRE RANGE: 4-14 AWG.
 3. TERMINAL WIRE RANGE: 6 AWG-250 MCM.
 4. TERMINAL WIRE RANGE: 500 MCM-1000 MCM.
 5. TIGHTEN TERMINAL BLOCK SCREWS TO 600 IN/LBS. TORQUE.
 6. TIGHTEN TERMINAL BLOCK SCREWS TO 275 IN/LBS. TORQUE.

ECO No		DESCRIPTION		REV BY	DATE
M9745		CHANGED CAPPANEL-623 TO -623C		MN	01/08/16

THE COMPONENT, PART OR ASSEMBLY DESCRIBED IN THIS DOCUMENT MUST COMPLY WITH THE EU(EUROPEAN UNION) DIRECTIVE RoHS2		MATERIAL		CONFIDENTIAL AND PROPRIETARY INFORMATION THIS DOCUMENT CONTAINS CONFIDENTIAL AND PROPRIETARY INFORMATION OF MTE CORPORATION AND MAY NOT BE USED, COPIED OR DISCLOSED TO OTHERS EXCEPT WITH THE AUTHORIZED WRITTEN PERMISSION OF MTE CORPORATION	
CONTAINS <0.1% OF ANY SVHC BY WEIGHT PER REACH REGULATION				DESCRIPTION	
UNLESS OTHERWISE SPECIFIED DIMENSIONS ARE IN INCHES [MM] TOLERANCES ARE: ANGLES: ± 1° 1 PLACE .X: ± .1 [2.5] 2 PLACE .XX: ± .03 [0.76] 3 PLACE .XXX: ± .010 [0.254]		DRAWN MN 06/25/14 CHECKED JM 01/13/16 APPROVED JM 01/13/16		SWG 1000A 380-480V 2-8kHz FILTER NEMA 3R	
N83 W13330 Leon Road Menomonee Falls, WI 53051 USA 800.455-4683 262.253-8200		SIZE D DWG No. CD SWGW1000D SCALE 1:8		REV 02 SHEET 1 OF 1	