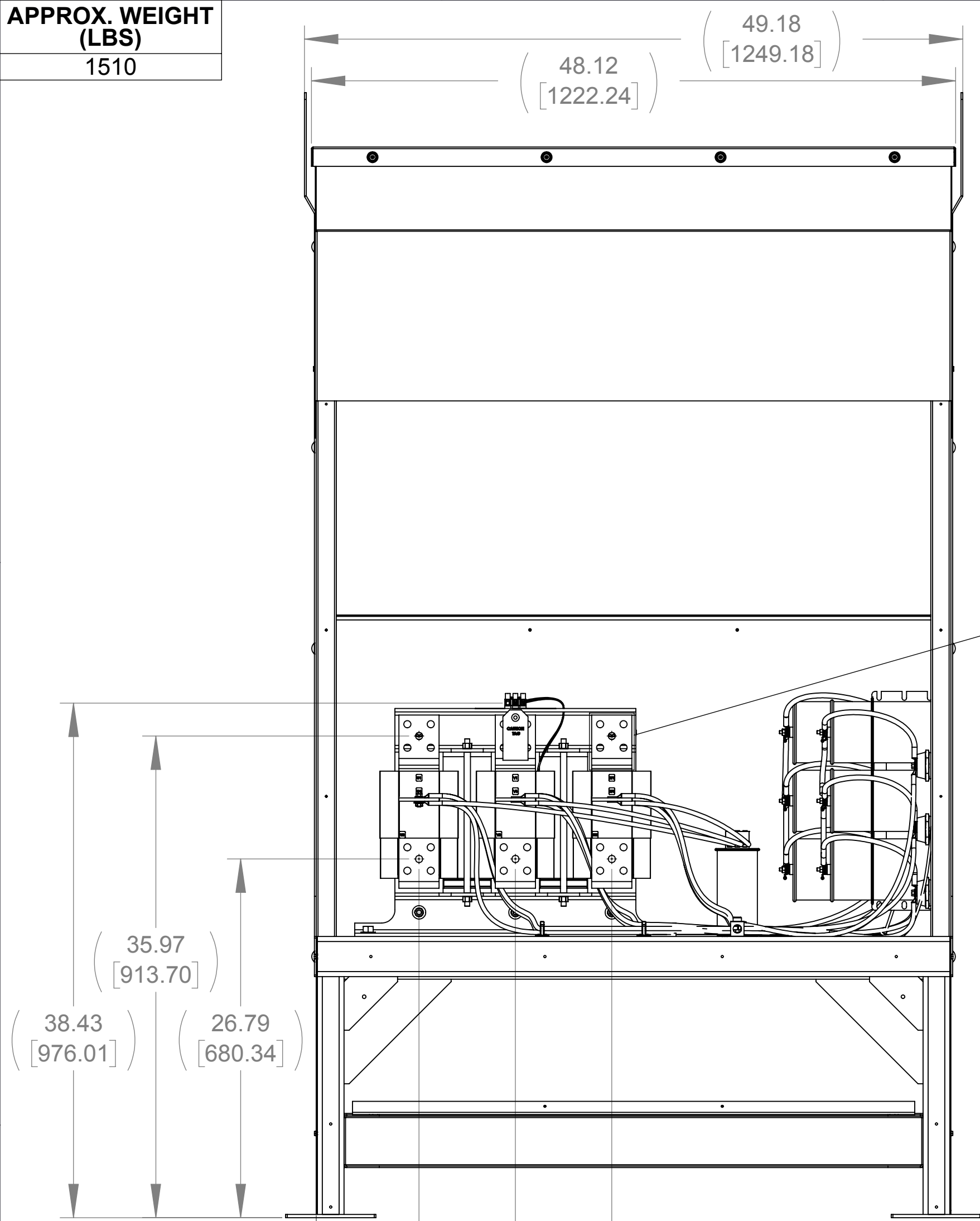
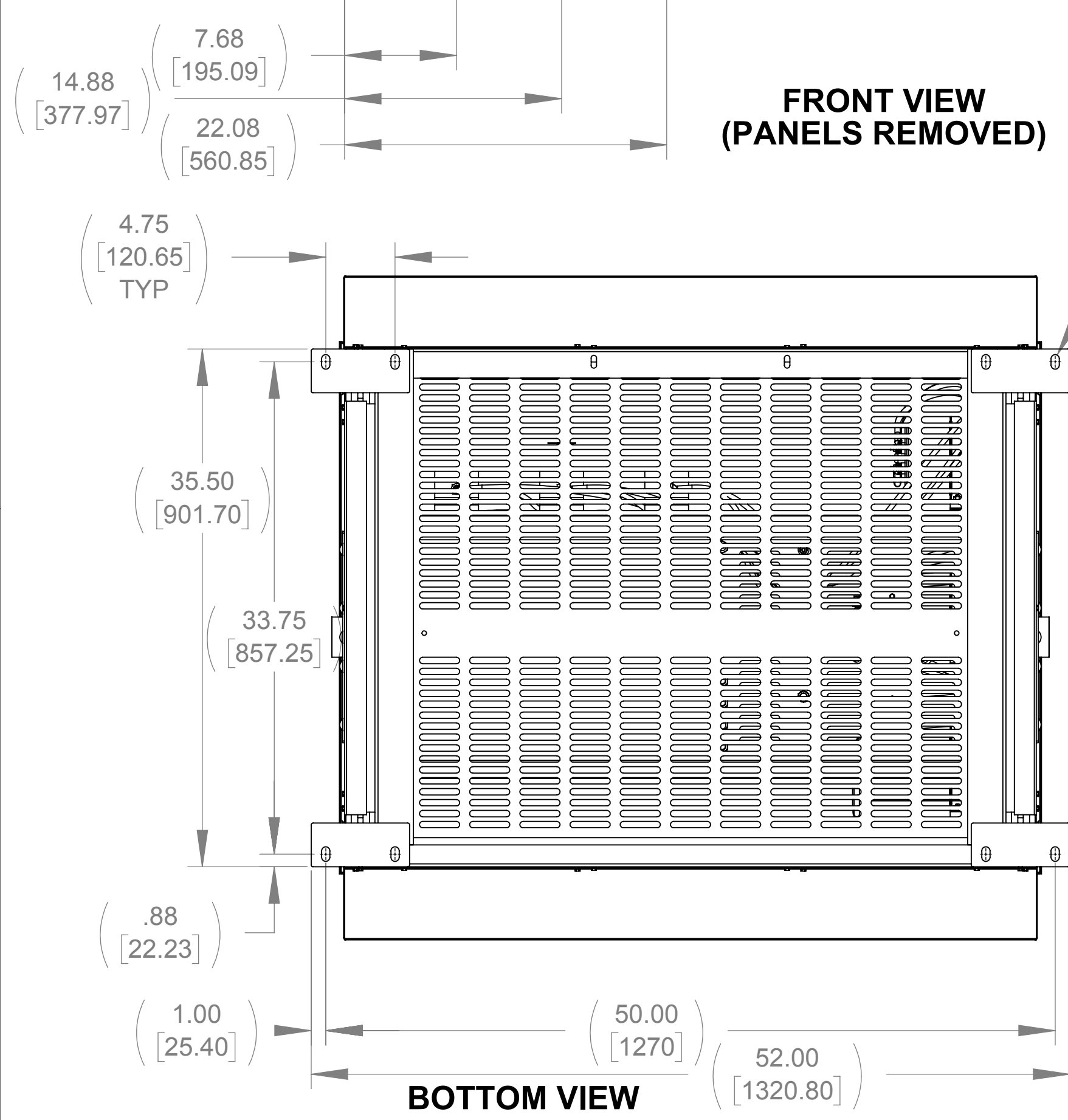


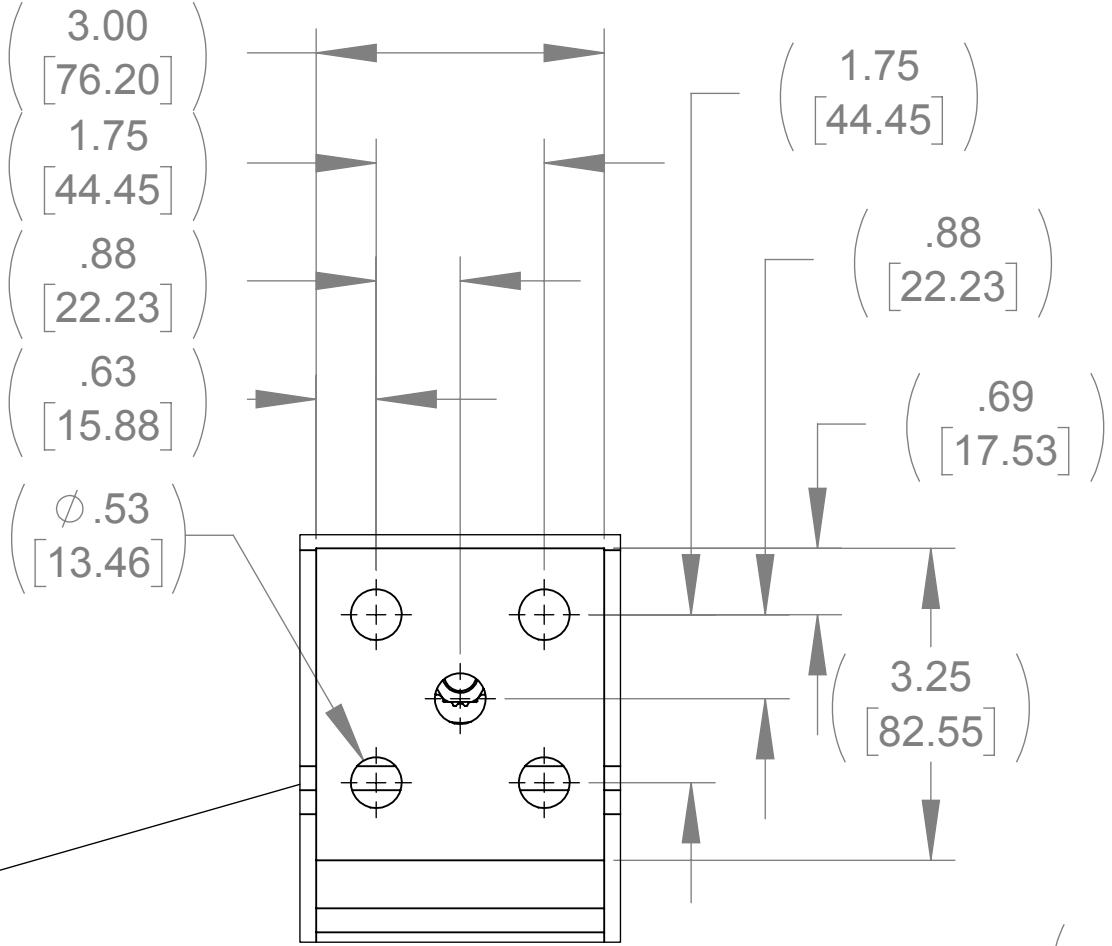
APPROX. WEIGHT  
(LBS)  
1510



FRONT VIEW  
(PANELS REMOVED)

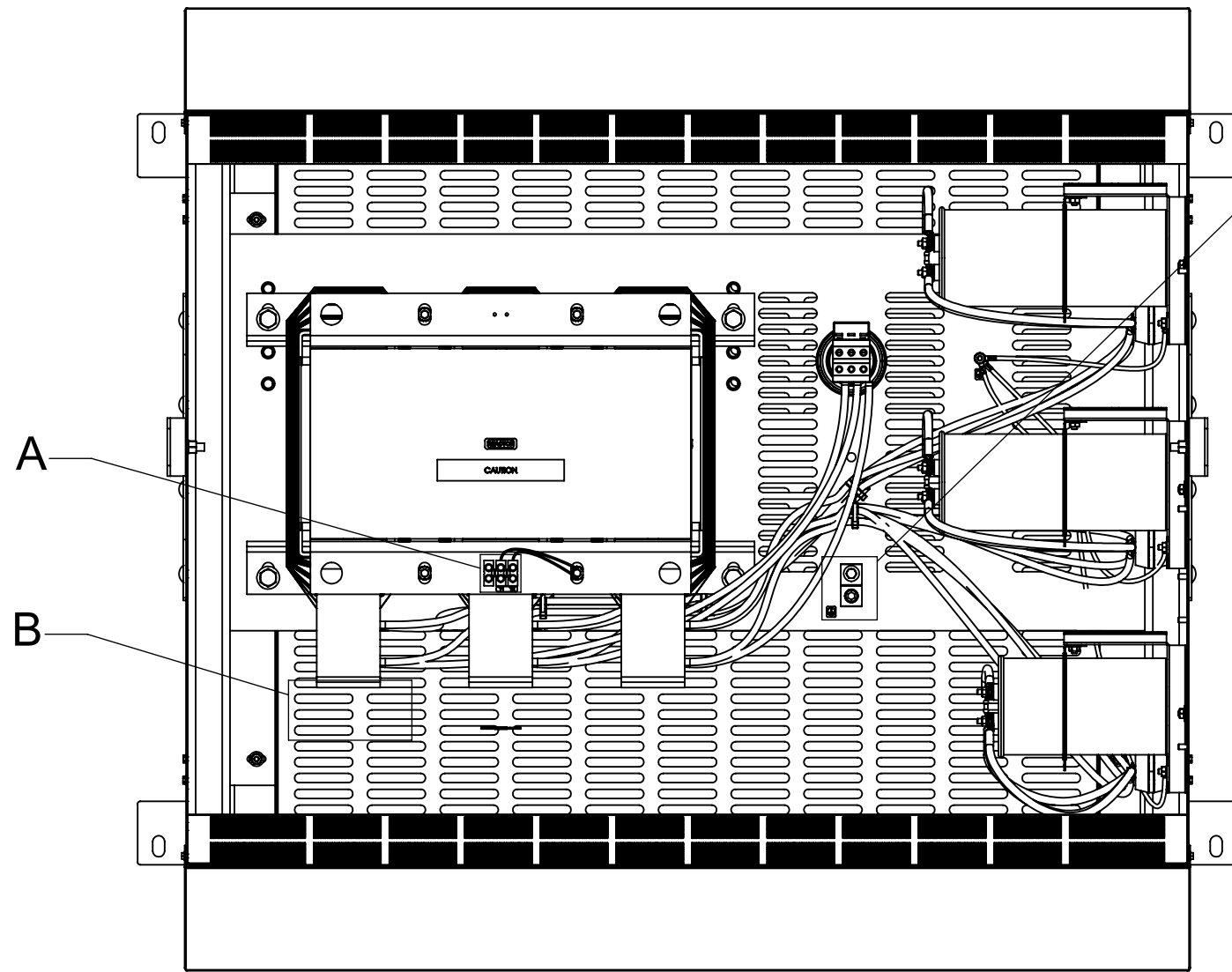


BOTTOM VIEW

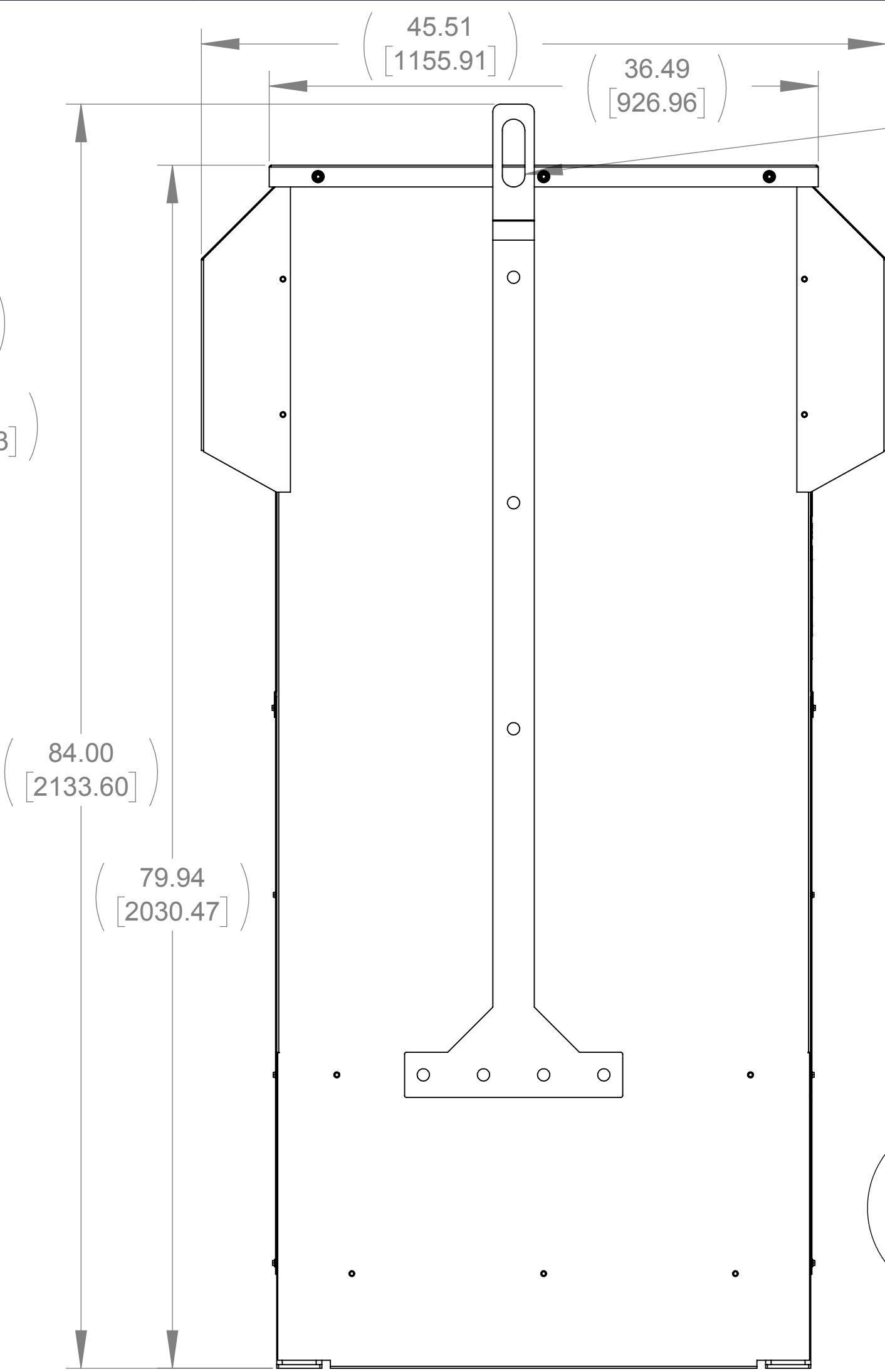


LUG VIEW  
(6 PLACES)

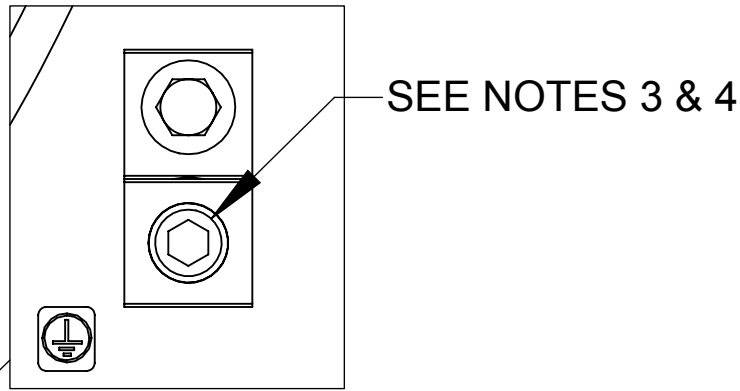
.56 X 1.00[25.40]  
[14.29]  
SLOT, 8 PLACES



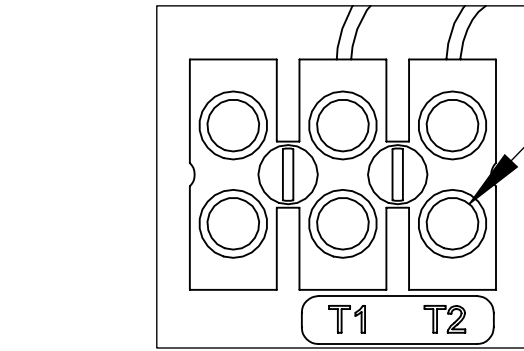
TOP VIEW  
(PANELS REMOVED)



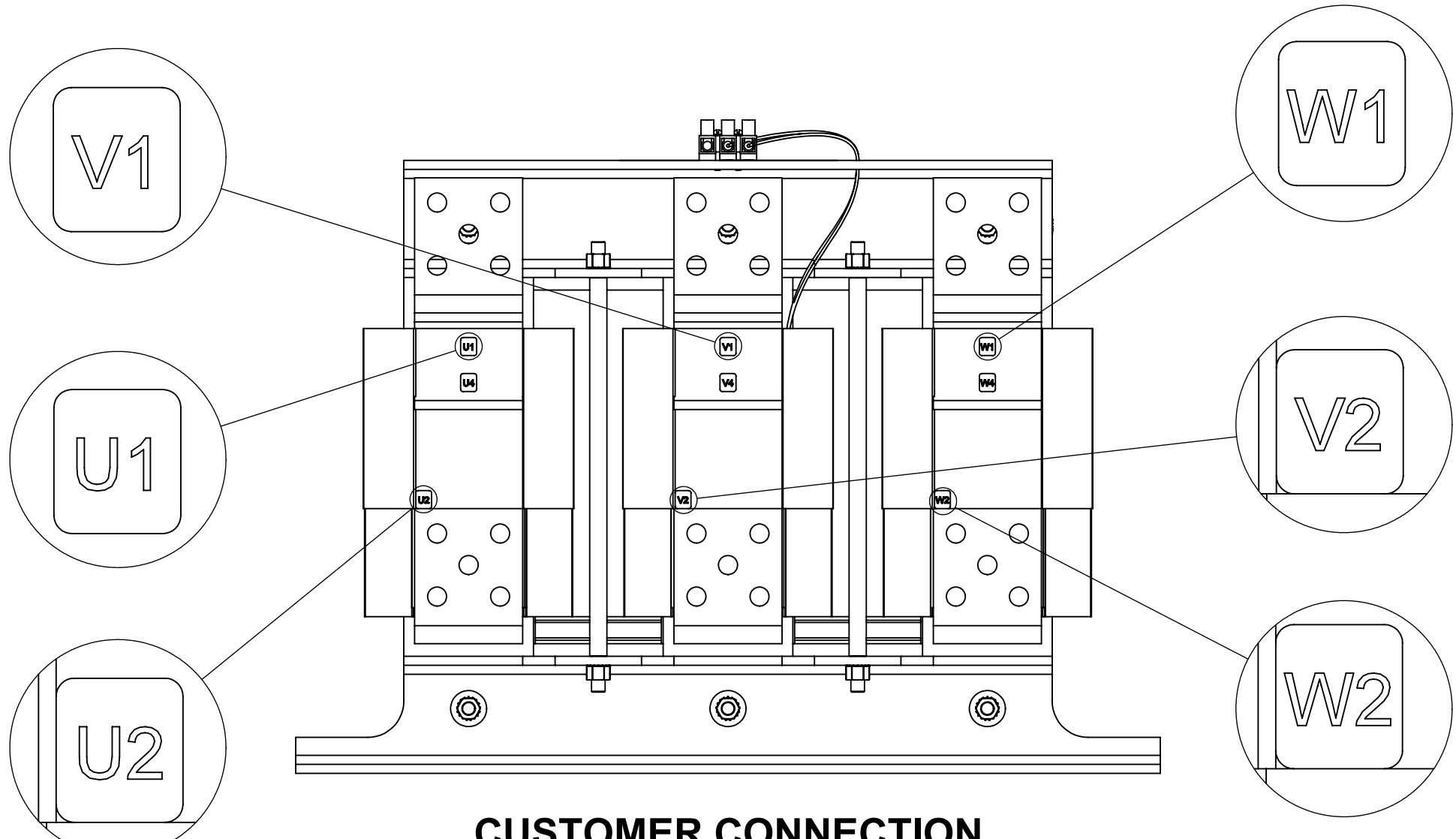
SIDE VIEW



CUSTOMER CONNECTION  
DETAIL VIEW (GROUND)

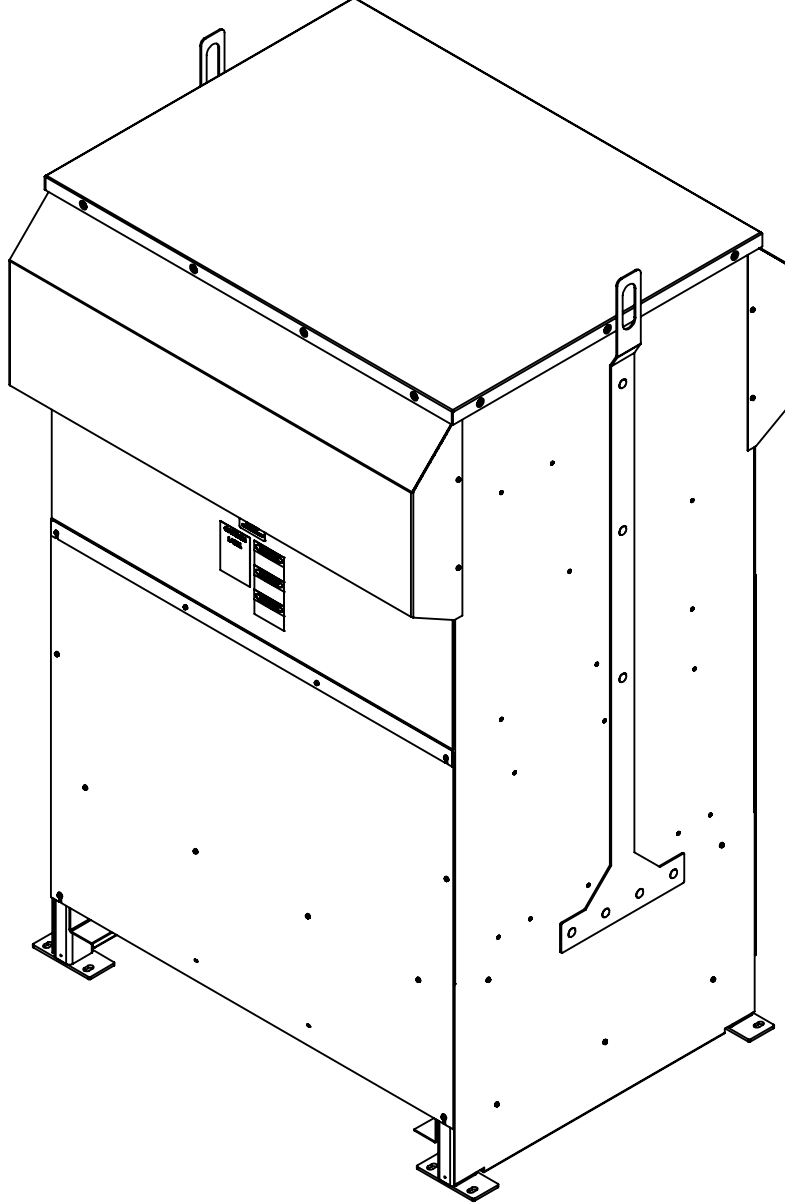


DETAIL A  
CUSTOMER CONNECTION  
DETAIL VIEW (THERMAL)




CUSTOMER CONNECTION  
DETAIL VIEW

ECO No	DESCRIPTION	REV BY	DATE



NOTES:

1. TIGHTEN TERMINAL BLOCK SCREWS TO 16 IN/LBS. TORQUE.
2. TERMINAL WIRE RANGE: 4 - 14 AWG
3. TERMINAL WIRE RANGE: 6 AWG - 250 MCM
4. TIGHTEN TERMINAL BLOCK SCREWS TO 275 IN/LBS. TORQUE.

THE COMPONENT, PART OR ASSEMBLY DESCRIBED IN THIS DOCUMENT MUST COMPLY WITH THE EU(EUROPEAN UNION) DIRECTIVE RoHS2		MATERIAL		CONFIDENTIAL AND PROPRIETARY INFORMATION THIS DOCUMENT CONTAINS CONFIDENTIAL AND PROPRIETARY INFORMATION OF MTE CORPORATION AND MAY NOT BE USED, COPIED OR DISCLOSED TO OTHERS EXCEPT WITH THE AUTHORIZED WRITTEN PERMISSION OF MTE CORPORATION			
CONTAINS <0.1% OF ANY SVHC BY WEIGHT PER REACH REGULATION				DESCRIPTION			
<div>UNLESS OTHERWISE SPECIFIED DIMENSIONS ARE IN INCHES [MM] TOLERANCES ARE:  ANGLES: ± 1 °  1 PLACE .X: ± .1 [2.5]  2 PLACE .XX: ± .03 [0.76]  3 PLACE .XXX: ± .010 [0.254]</div>		<div>  N83 W13330 Leon Road Menomonee Falls, WI 53051 USA 800.455-4683 262.253.8200</div>		SWG 720A 600V 2-8kHz FILTER, NEMA 3R ENCL.			
		DRAWN	DATE	SIZE	DWG No.	REV	
		MN	09/04/18				
		CHECKED	DATE	SCALE	1:8		
		MN	09/17/18				
		APPROVED	DATE				
		TL	10/10/18	CD SWGW0720E			
						SHEET 1 OF 1	