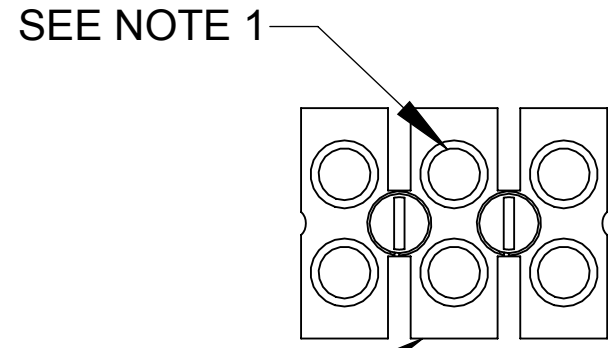
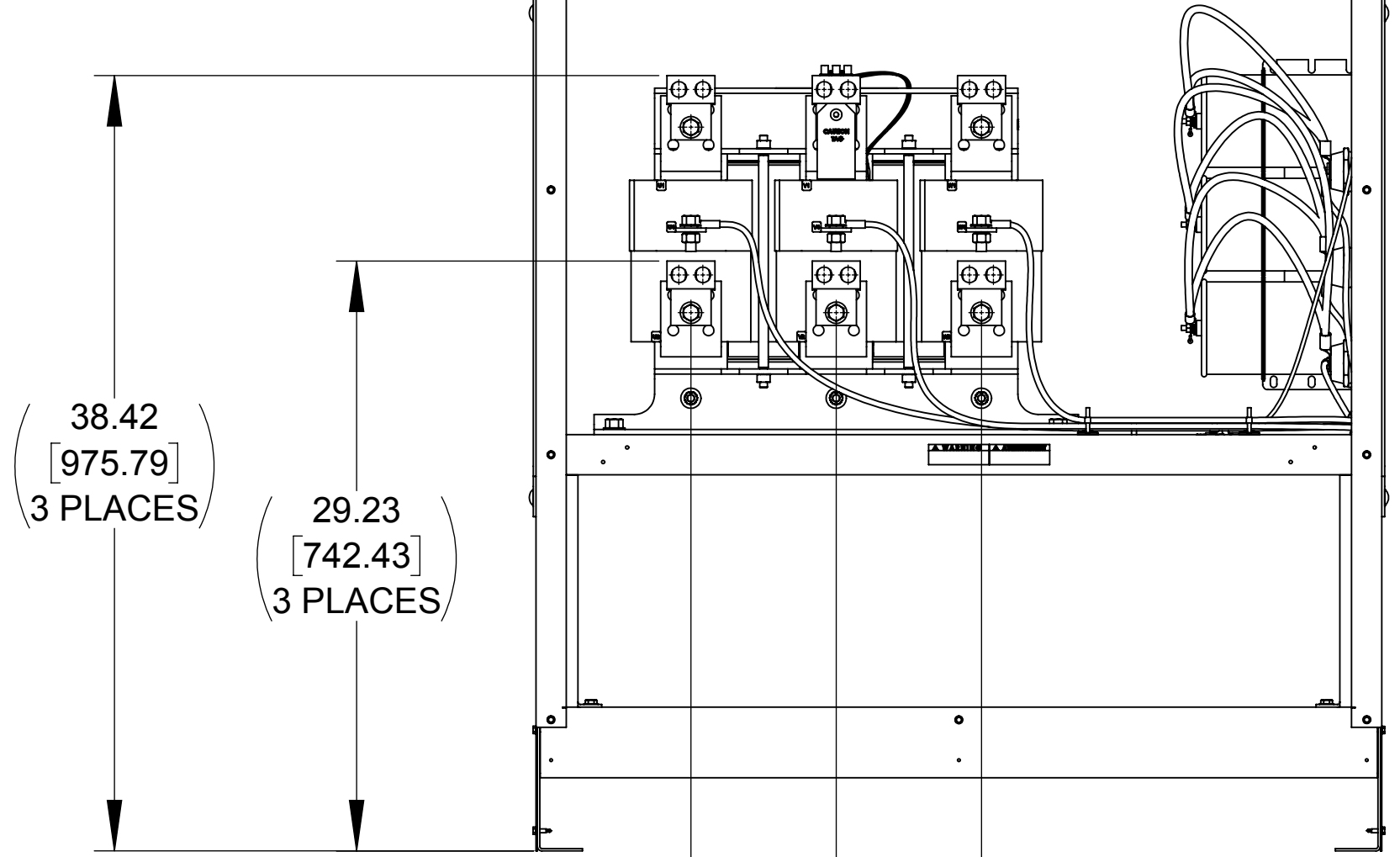


APPROX. WEIGHT (LBS)
936

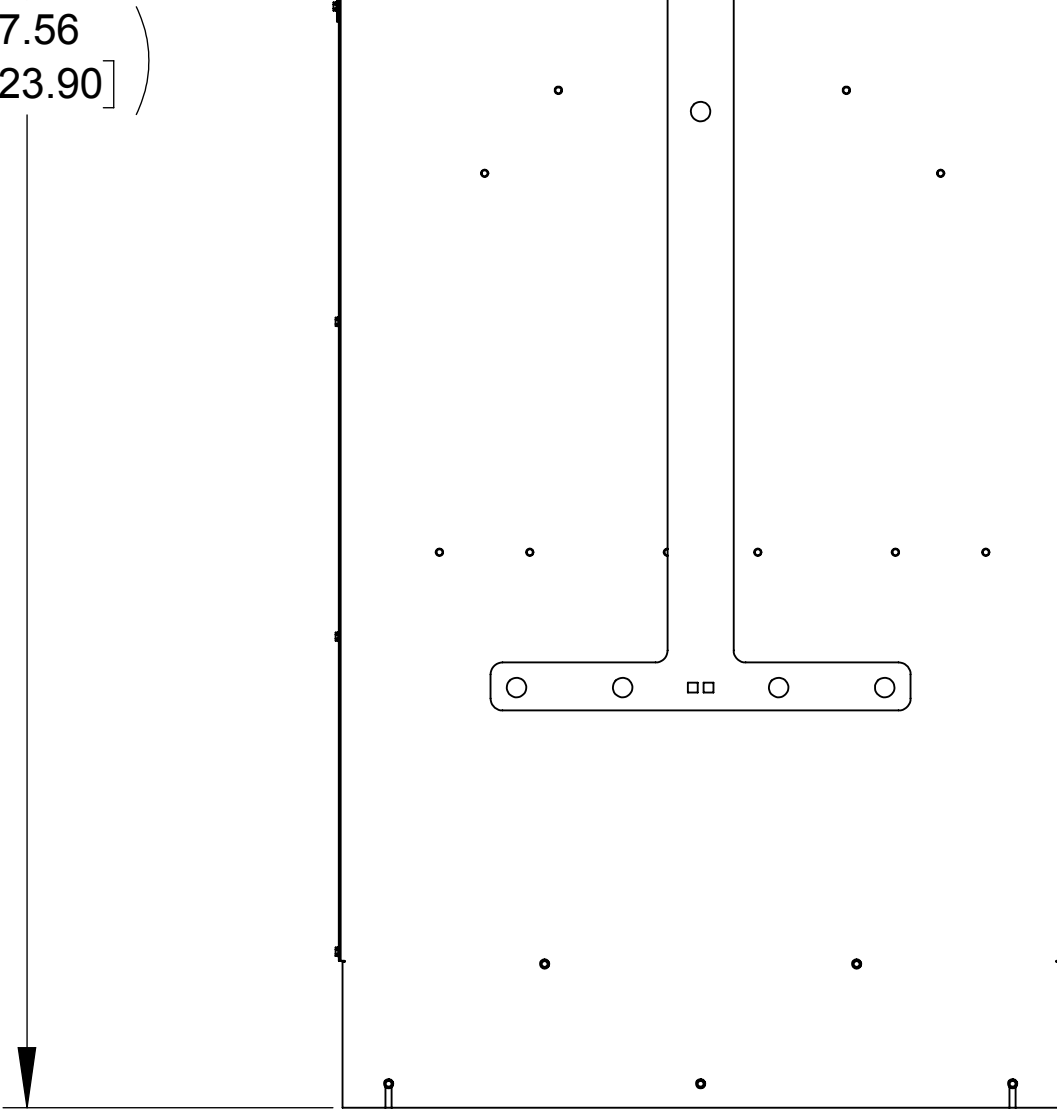
ECO No	DESCRIPTION	REV BY	DATE
M9736	UPDATED CAPPANEL WITH CDE CAPS	MN	01/08/16



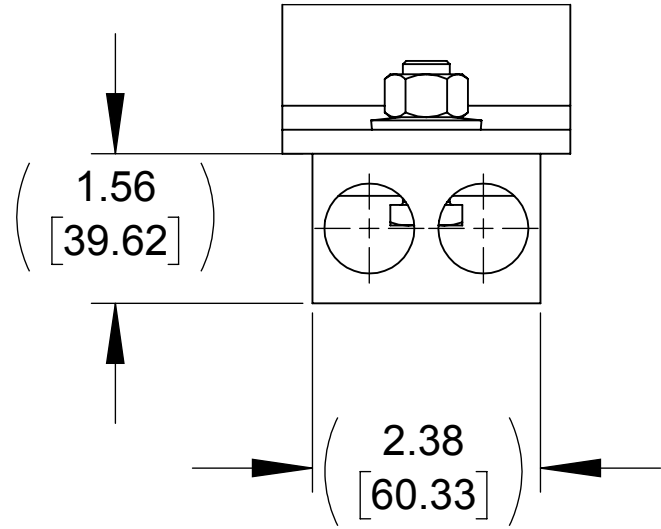
SEE NOTE 1
SEE NOTE 2
**CUSTOMER CONNECTION
DETAIL VIEW (THERMAL)**



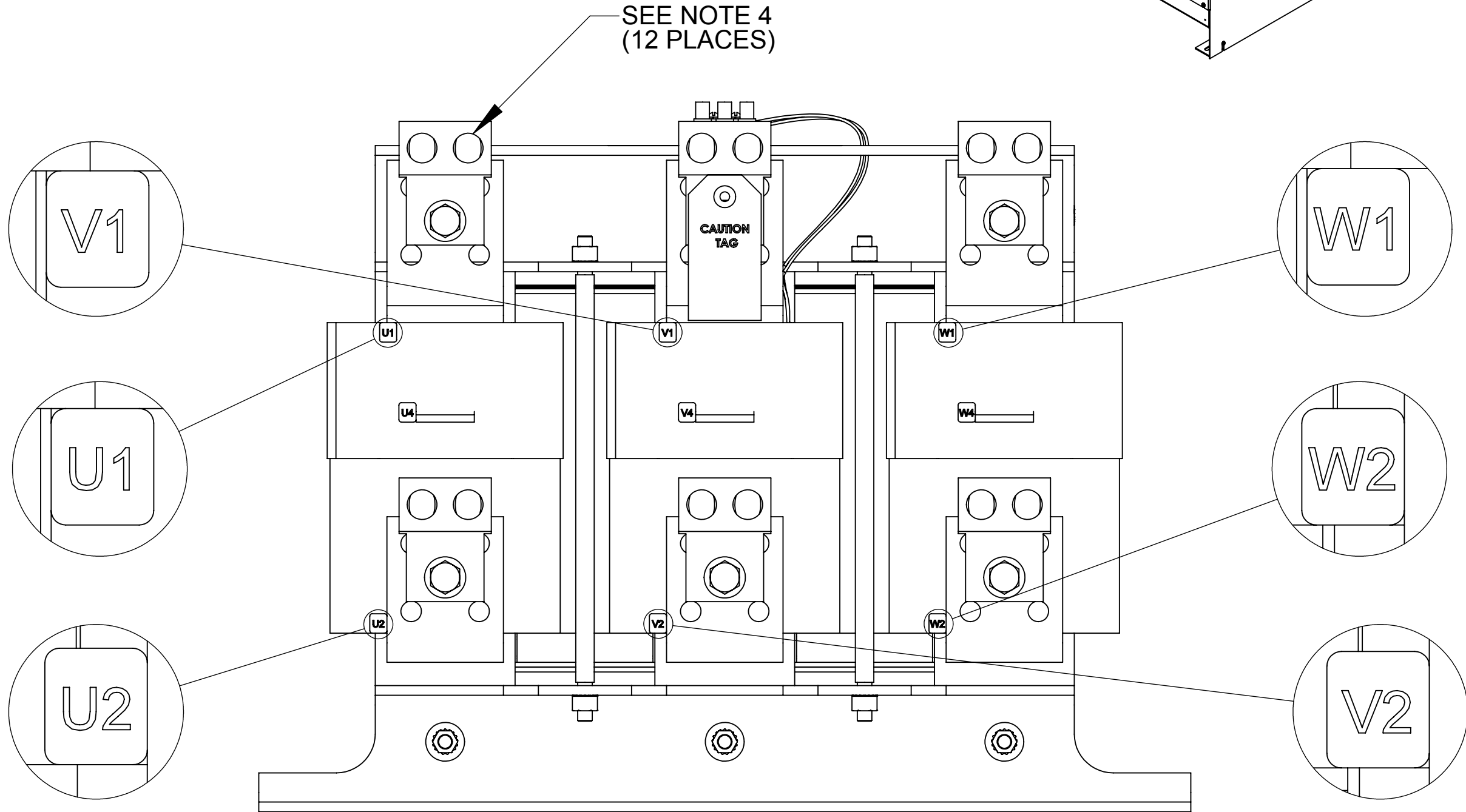
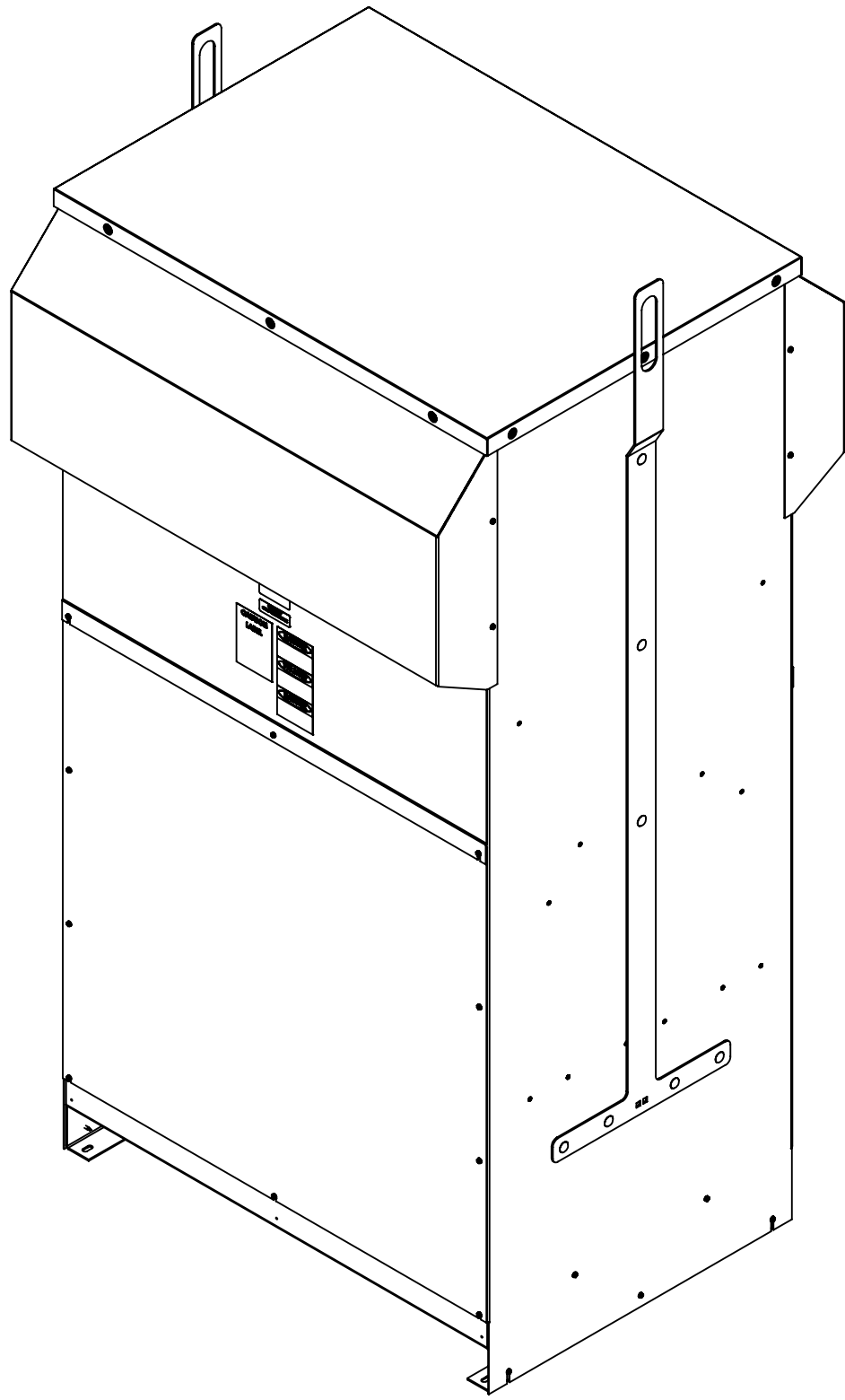
**FRONT VIEW
(FRONT PANEL REMOVED)**



RIGHT SIDE VIEW



**LUG VIEW
(TYP 6 PLACES
U1, V1,W1
U2, V2 W2 TERMINALS)**

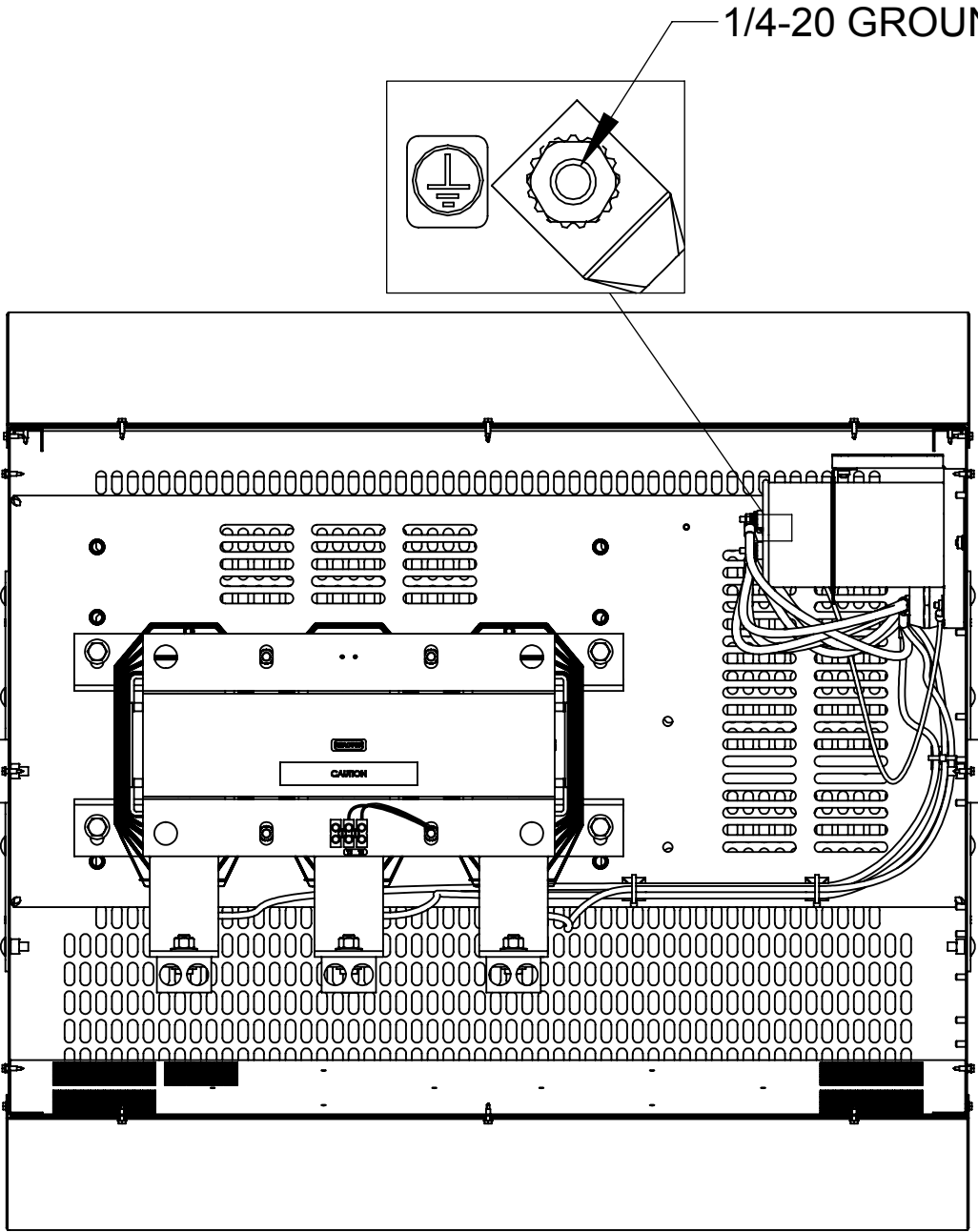


**CUSTOMER CONNECTION
DETAIL VIEW**

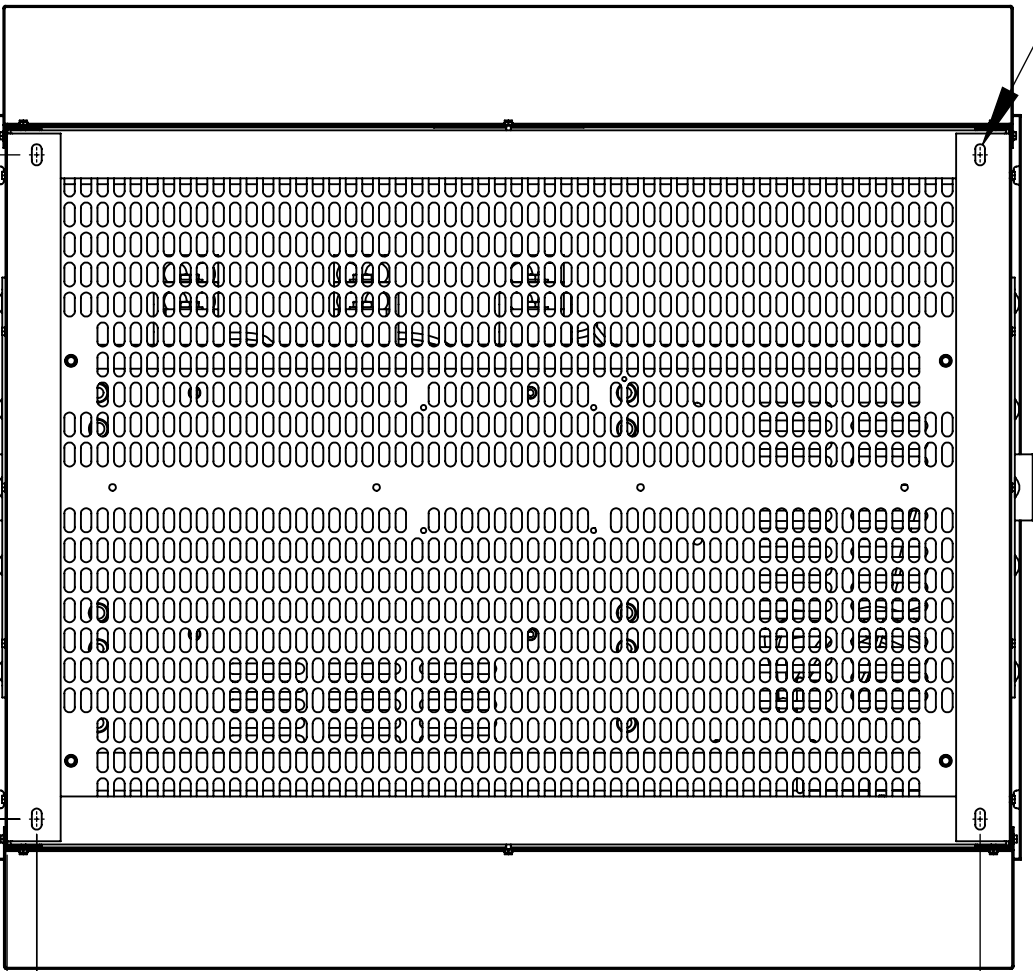
NOTES:

1. TIGHTEN TERMINAL BLOCK SCREWS TO 16 IN/LBS. TORQUE.
2. TERMINAL WIRE SIZE: 4-14 AWG.
3. TERMINAL WIRE SIZE: 2 AWG - 600 MCM.
4. TIGHTEN TERMINAL BLOCK SCREWS TO 500 IN/LBS. TORQUE.

THE COMPONENT, PART OR ASSEMBLY DESCRIBED IN THIS DOCUMENT MUST COMPLY WITH THE EU(EUROPEAN UNION) DIRECTIVE RoHS2		MATERIAL		CONFIDENTIAL AND PROPRIETARY INFORMATION THIS DOCUMENT CONTAINS CONFIDENTIAL AND PROPRIETARY INFORMATION OF MTE CORPORATION AND MAY NOT BE USED, COPIED OR DISCLOSED TO OTHERS EXCEPT WITH THE AUTHORIZED WRITTEN PERMISSION OF MTE CORPORATION	
CONTAINS <0.1% OF ANY SVHC BY WEIGHT PER REACH REGULATION				DESCRIPTION	
UNLESS OTHERWISE SPECIFIED DIMENSIONS ARE IN INCHES [MM] TOLERANCES ARE: ANGLES: ± 1 ° 1 PLACE .X: ± .1 [2.5] 2 PLACE .XX: ± .01 [0.25] 3 PLACE .XXX: ± .005 [0.127]		MTE AN SL INDUSTRIES COMPANY N83 W13330 Leon Road Menomonee Falls, WI 53051 USA 900.455-4683 262.253-8200		SWG 600A 380-480V 2-8kHz FILTER NEMA 3R	
		DRAWN MN	DATE 09/04/13	SIZE D	DWG No. CD SWGW0600D
		CHECKED JM	DATE 01/11/16	REV 04	
		APPROVED JM	DATE 01/11/16	SCALE 1:8	SHEET 1 OF 1



**TOP VIEW
(TOP HAT REMOVED)**



BOTTOM VIEW