

ECO No	DESCRIPTION	REV BY	DATE
M12837	UPDATE DRAWING DUE TO CHANGES TO LUG 3940-105	WF	06/16/20

D

C

B

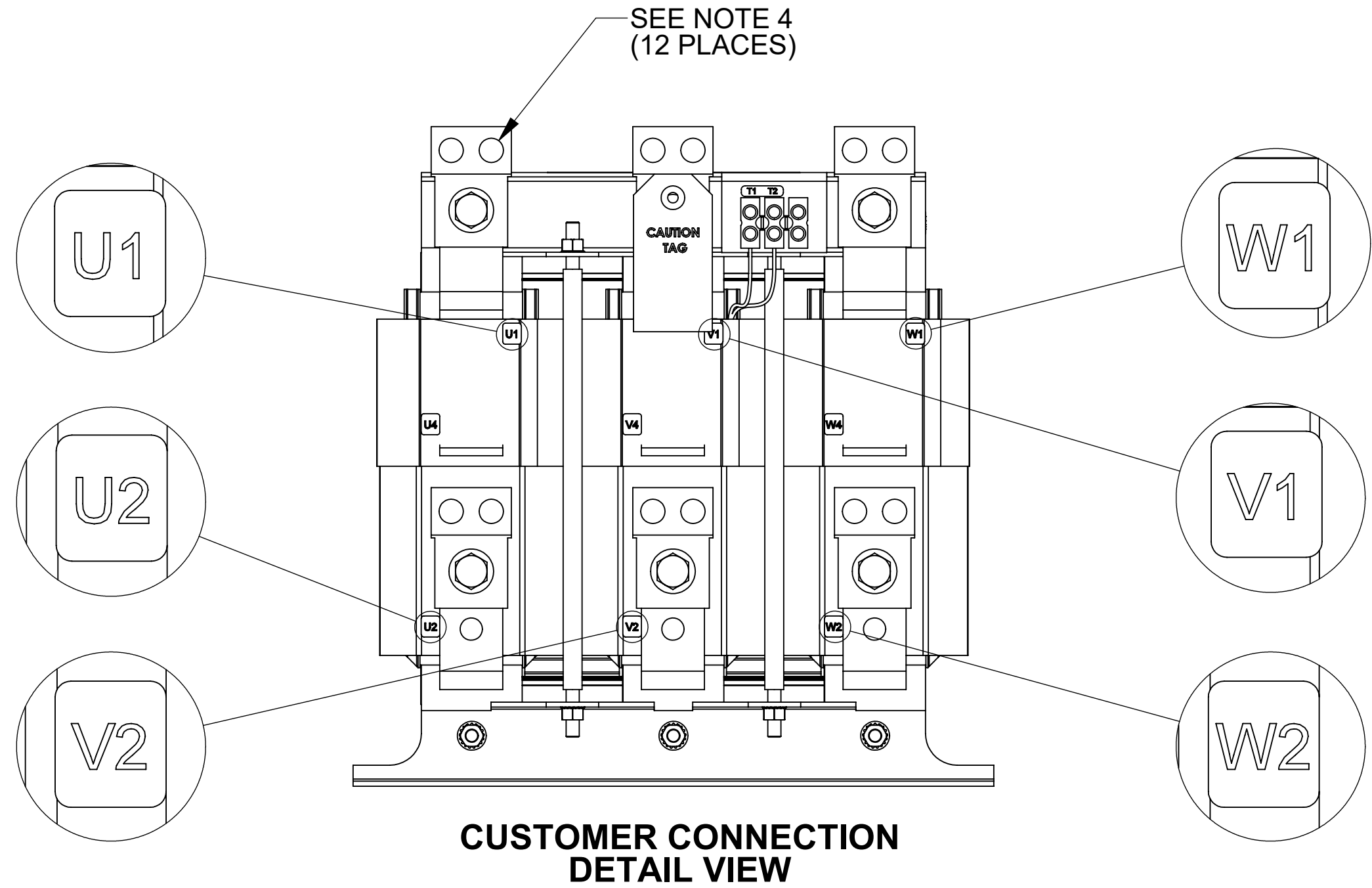
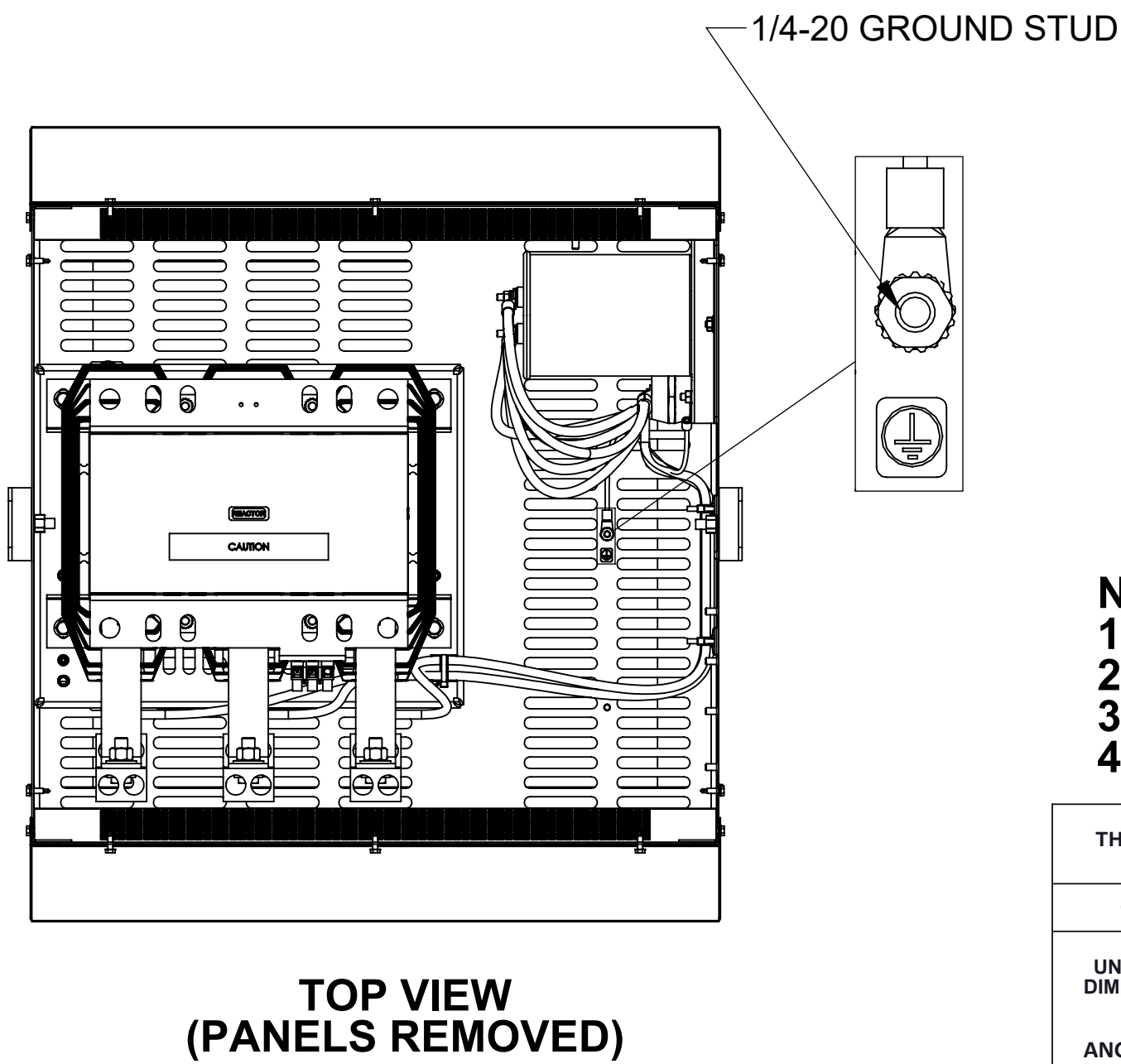
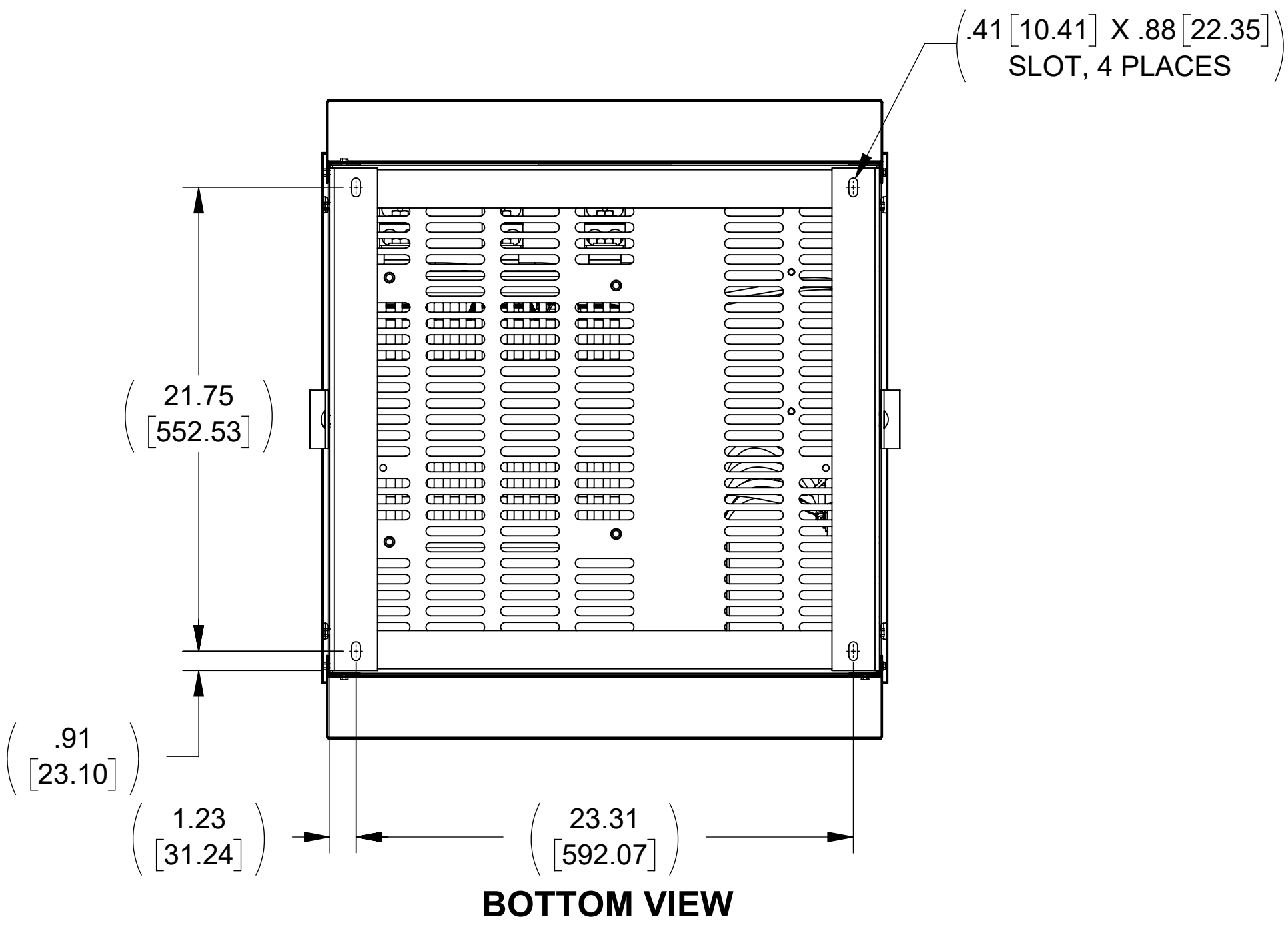
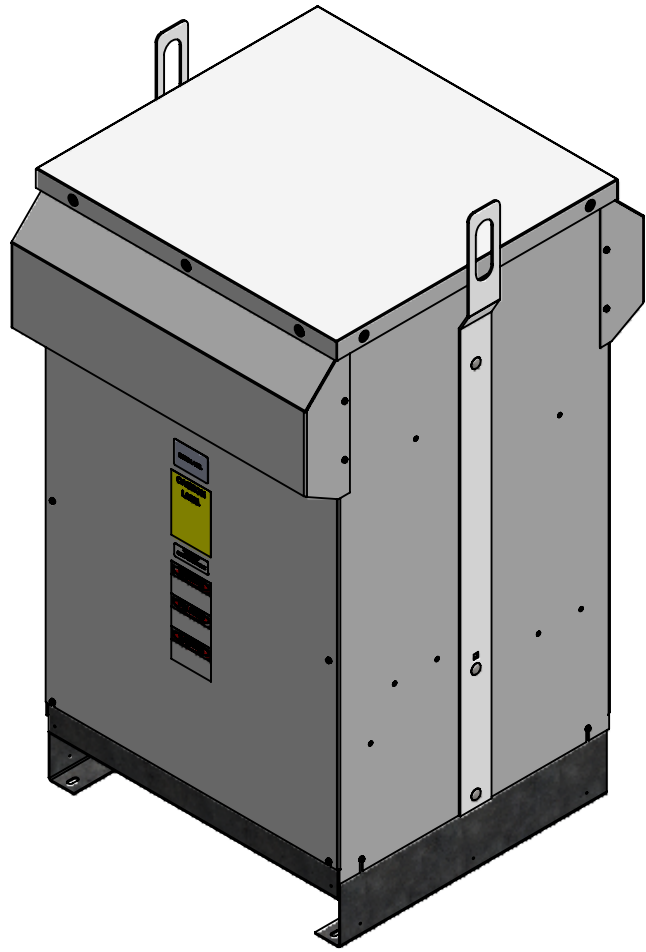
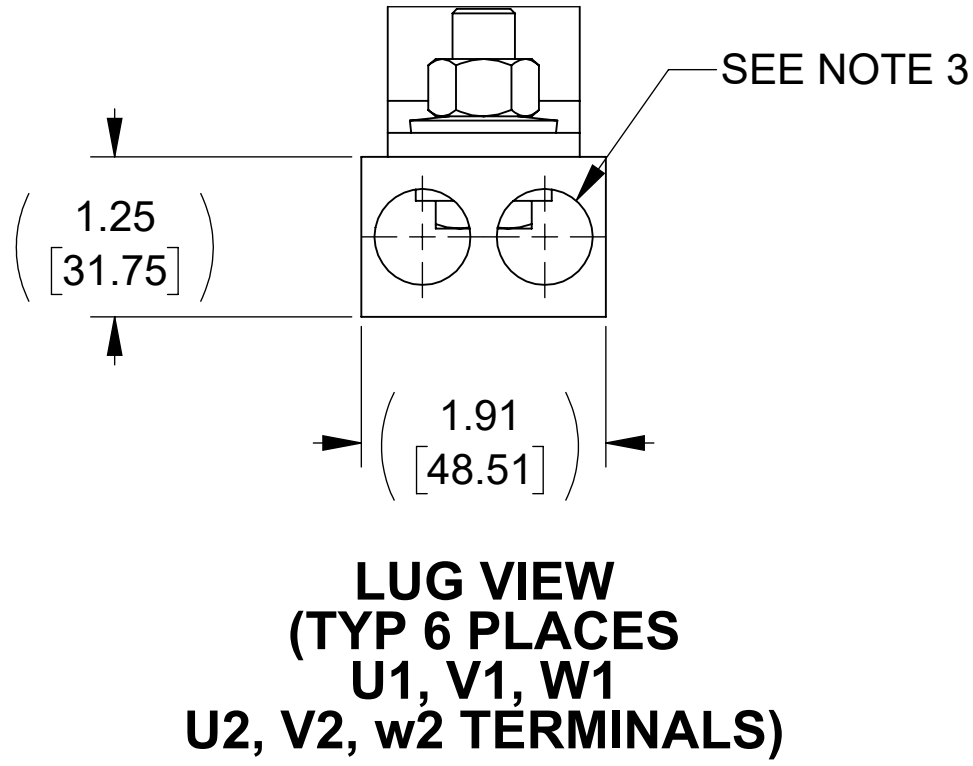
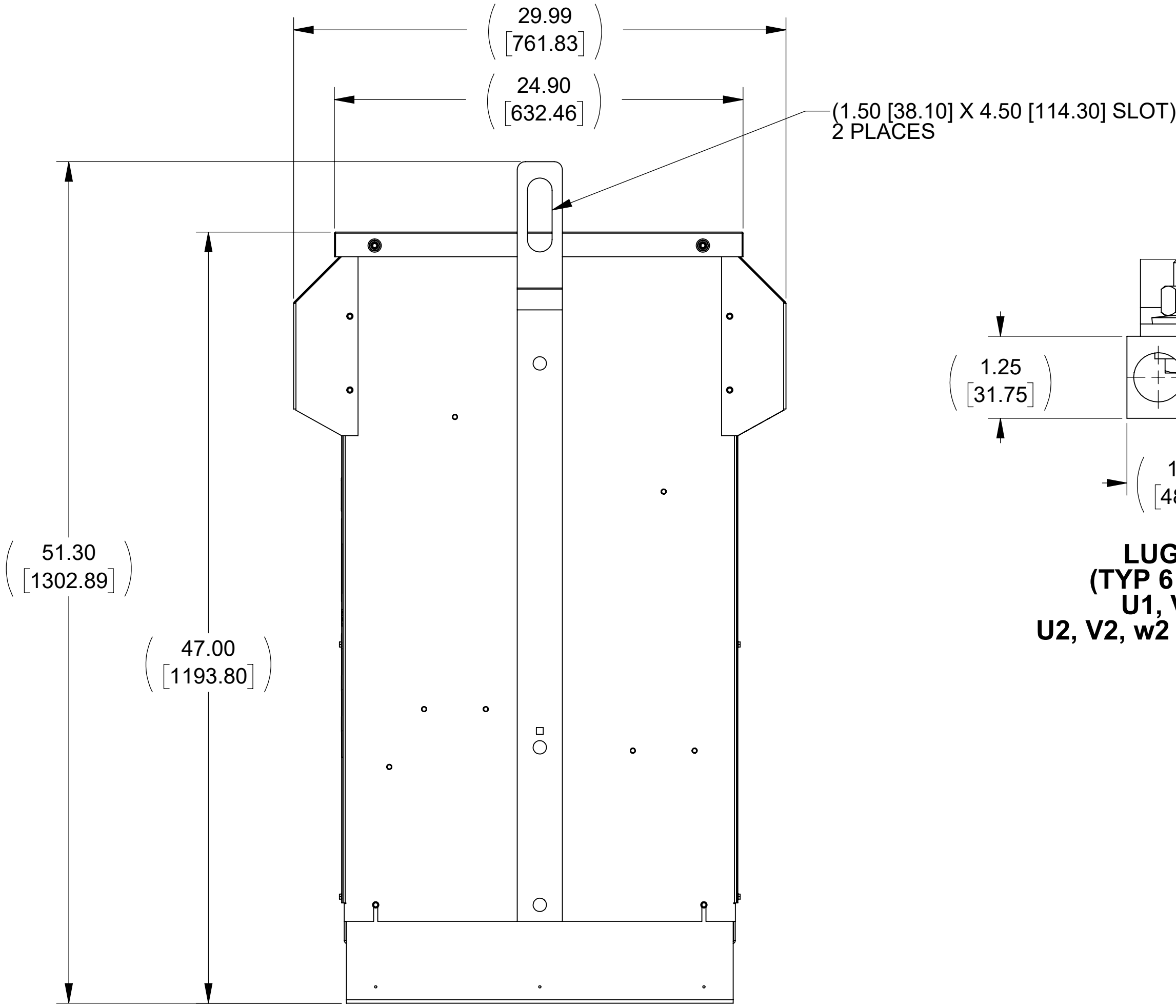
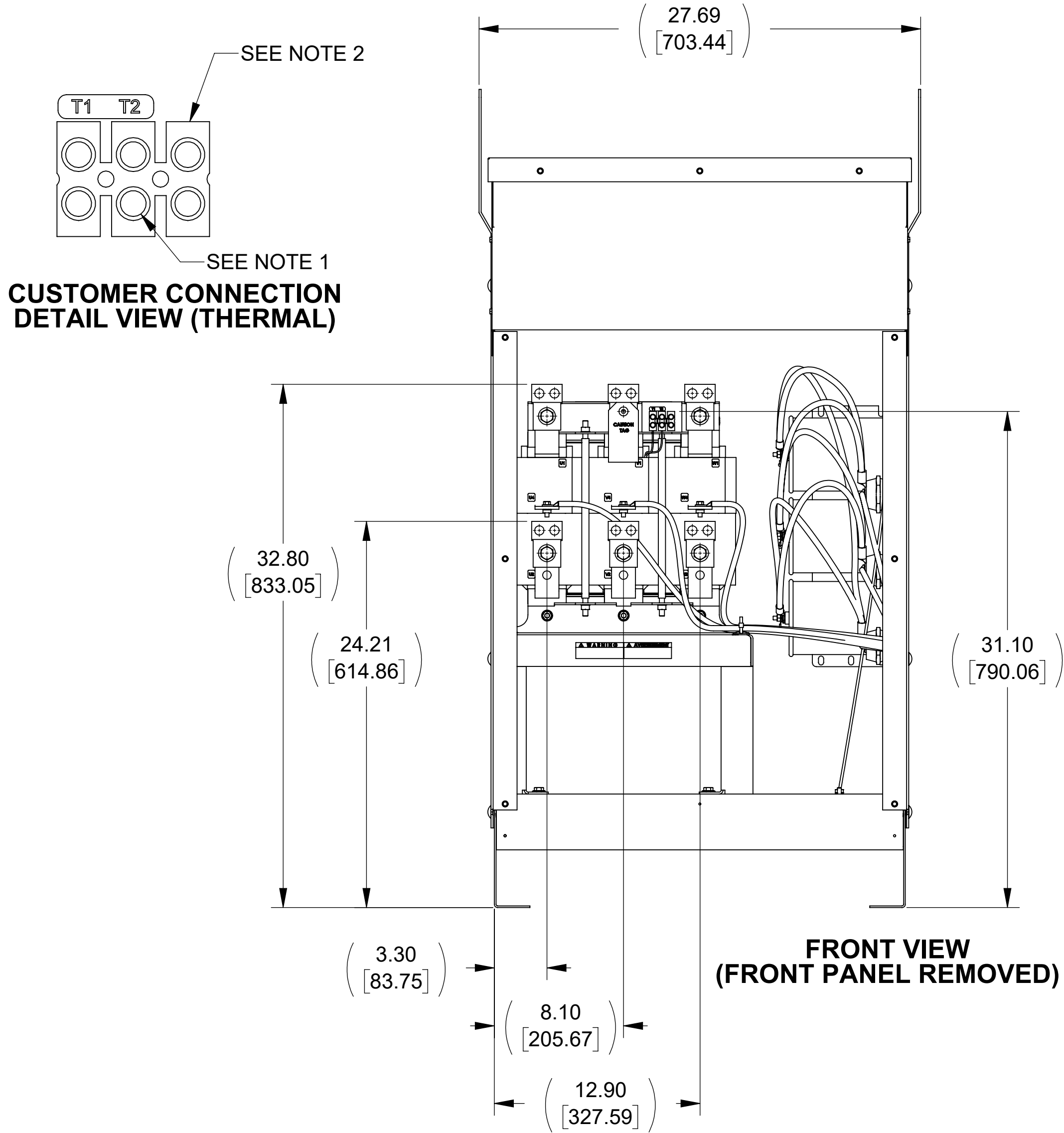
A

D


C

B

A



- NOTES:**
- TIGHTEN TERMINAL BLOCK SCREWS TO 16 IN/LBS. TORQUE.**
 - TERMINAL WIRE SIZE: 4-14 AWG.**
 - TERMINAL WIRE SIZE: 6 AWG - 350 MCM.**
 - TIGHTEN TERMINAL BLOCK SCREWS TO 200 IN/LBS. TORQUE.**

THE COMPONENT, PART OR ASSEMBLY DESCRIBED IN THIS DOCUMENT MUST COMPLY WITH THE EU(EUROPEAN UNION) DIRECTIVE RoHS2		MATERIAL		CONFIDENTIAL AND PROPRIETARY INFORMATION THIS DOCUMENT CONTAINS CONFIDENTIAL AND PROPRIETARY INFORMATION OF MTE CORPORATION AND MAY NOT BE USED, COPIED OR DISCLOSED TO OTHERS EXCEPT WITH THE AUTHORIZED WRITTEN PERMISSION OF MTE CORPORATION		
CONTAINS <0.1% OF ANY SVHC BY WEIGHT PER REACH REGULATION				DESCRIPTION		
UNLESS OTHERWISE SPECIFIED DIMENSIONS ARE IN INCHES [MM] TOLERANCES ARE: ANGLES: ± 1 ° 1 PLACE .X: ± .1 [2.5] 2 PLACE .XX: ± .03 [0.76] 3 PLACE .XXX: ± .010 [0.254]		 N83 W13330 Leon Road Menomonee Falls, WI 53051 USA 800.455.4683 262.253.8200		SWG 415A 380-480V 2-8kHz FILTER NEMA 3R		
		DRAWN	DATE	SIZE	DWG No.	REV
		MN	08/27/13	D	CD SWGW0415D	08
		CHECKED	DATE	SCALE		
		WF	06/16/20	1:6		
		APPROVED	DATE	SHEET 1 OF 1		
		AK	06/22/20			