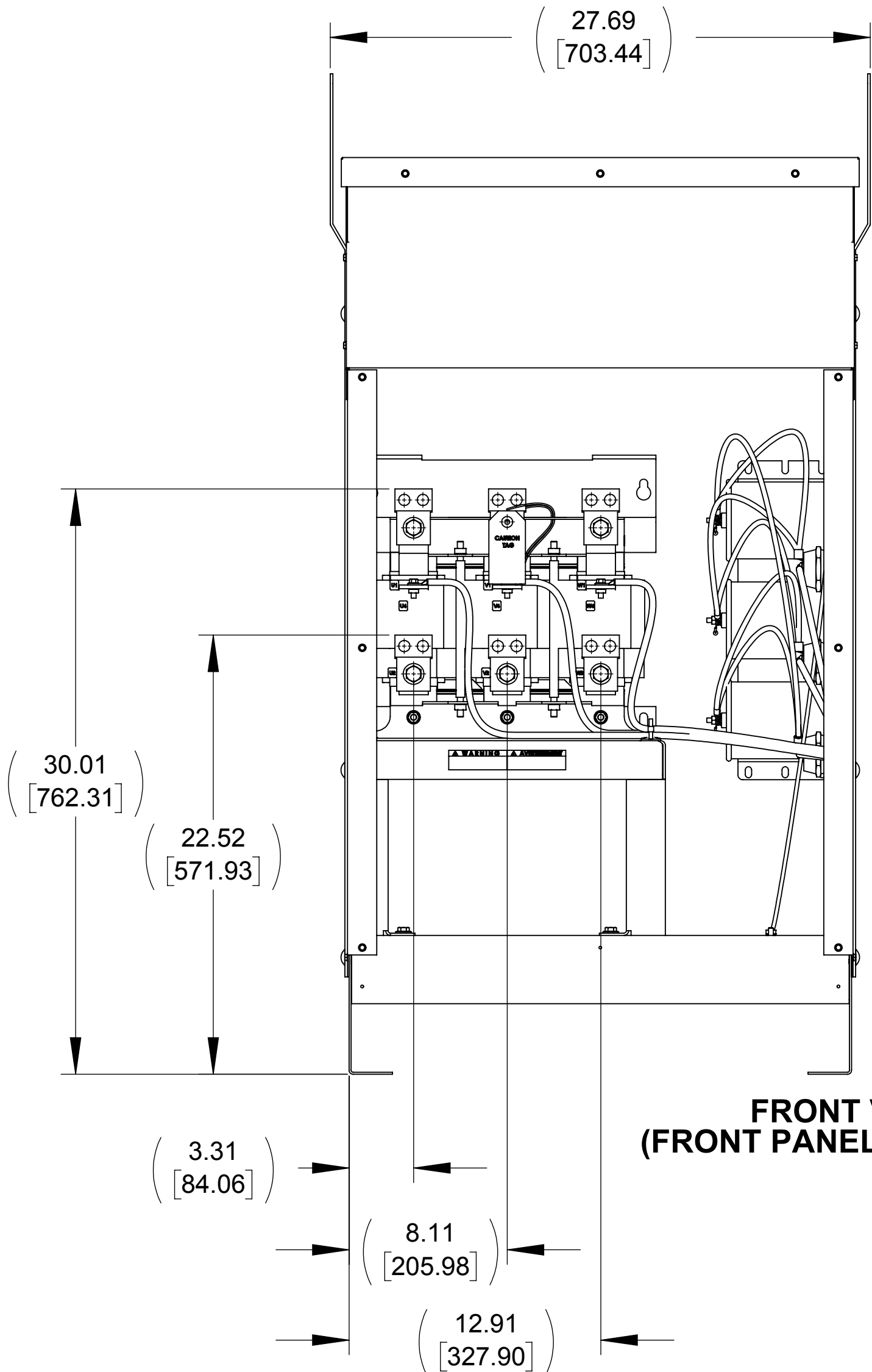
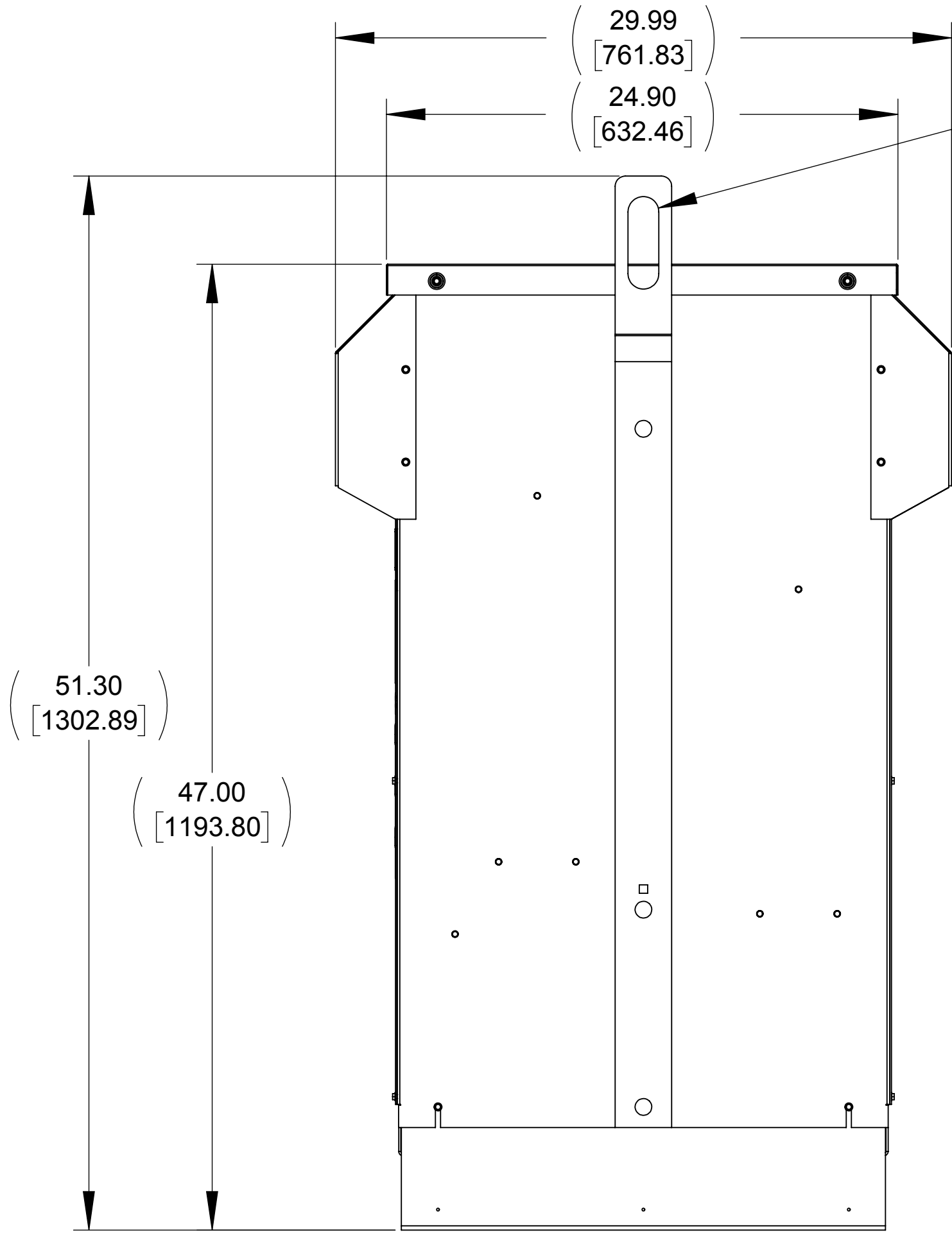


WEIGHT (LBS)  
444

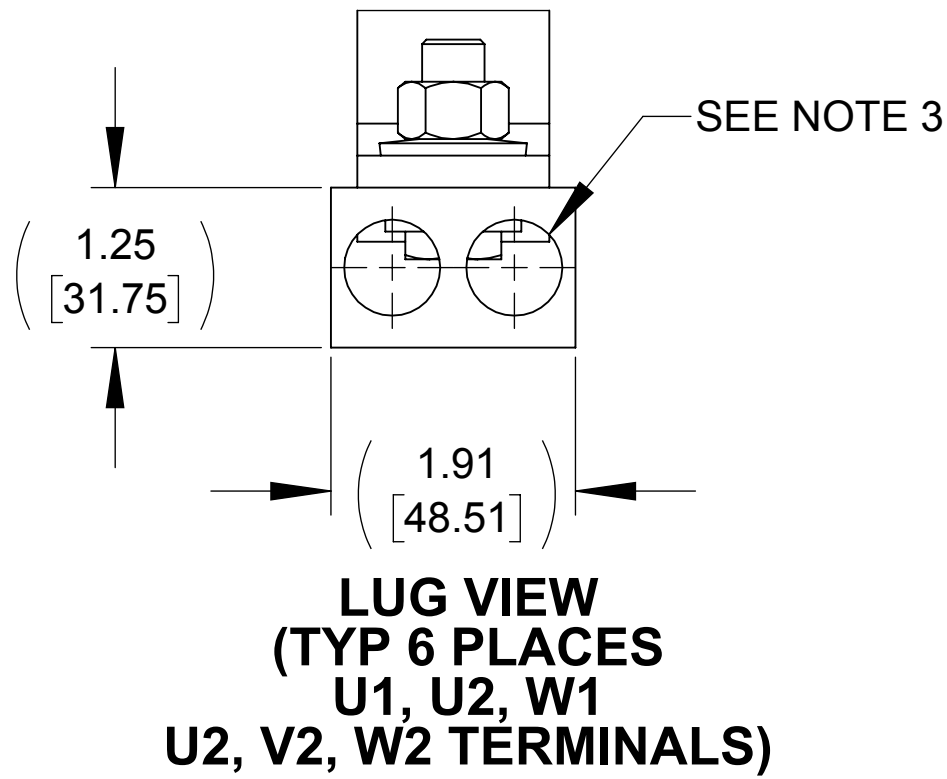
ECO No	DESCRIPTION	REV BY	DATE
M9770	CHANGED CAPPANEL-607 TO 623C	RR	02/14/17



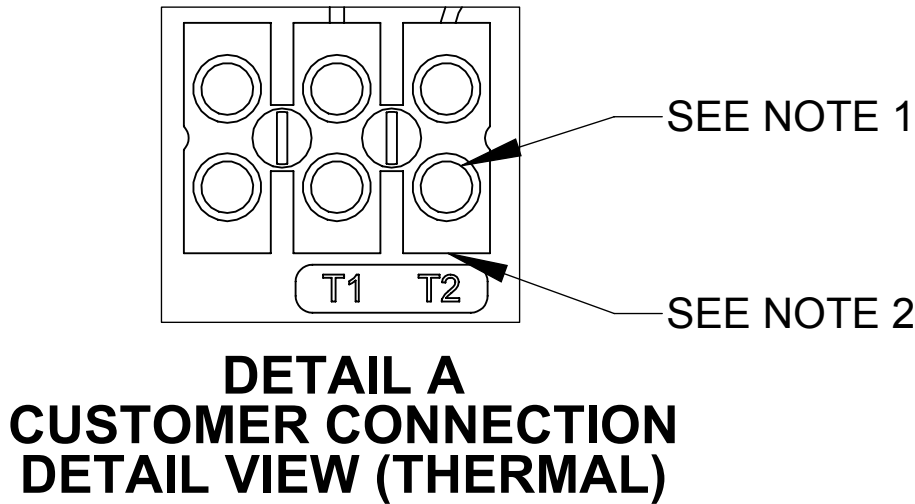
FRONT VIEW  
(FRONT PANEL REMOVED)



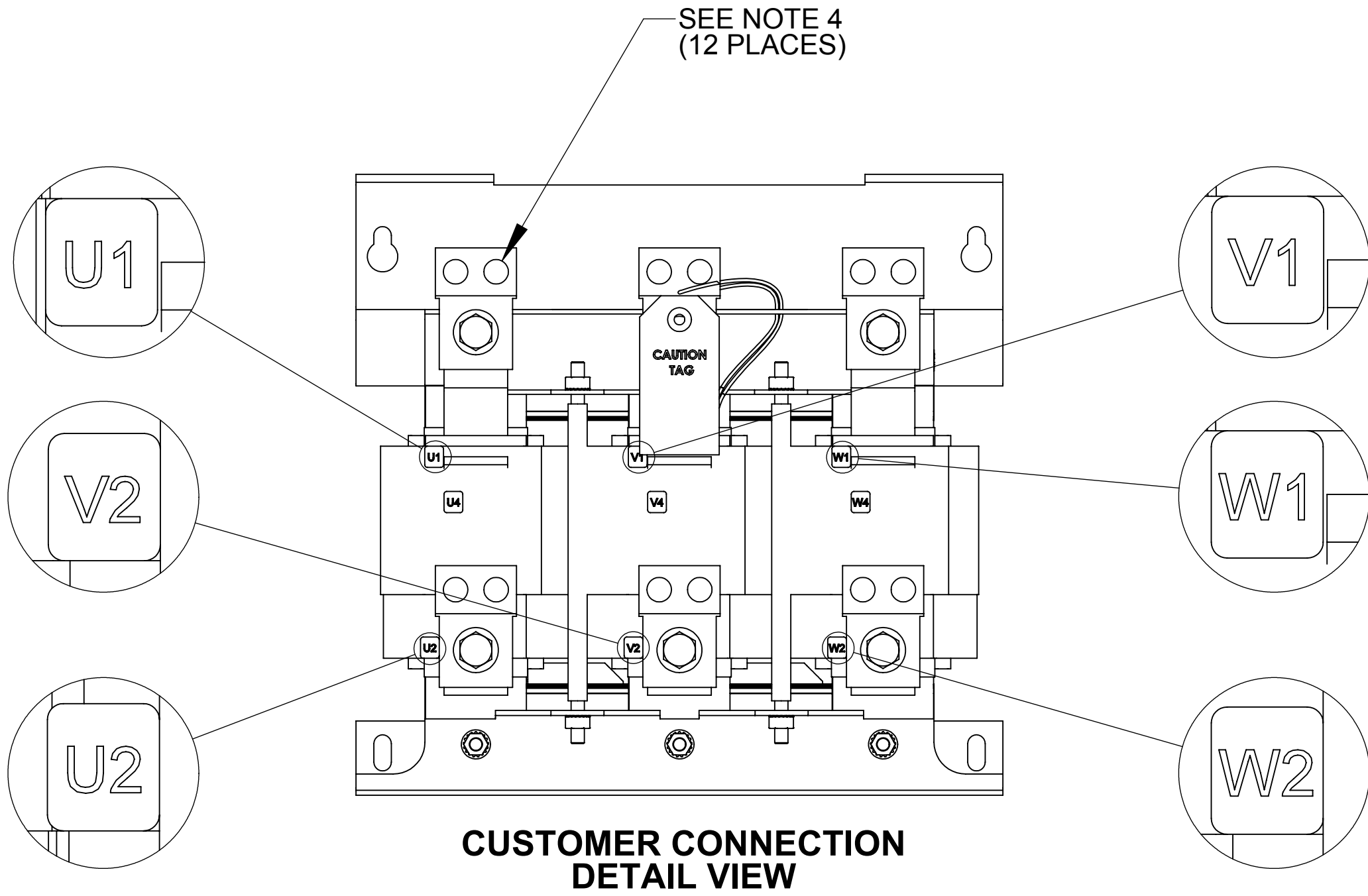
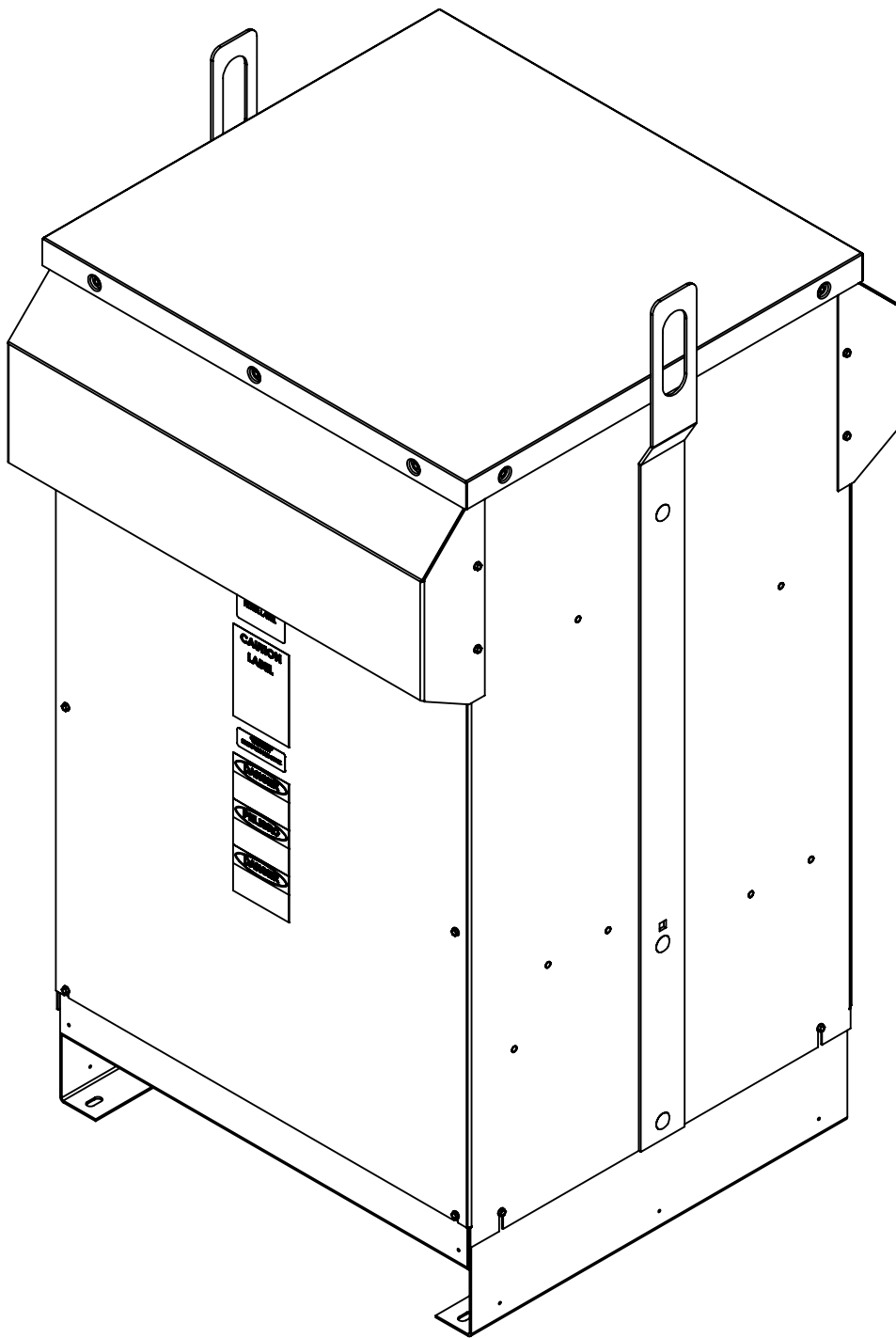
RIGHT SIDE VIEW



LUG VIEW  
(TYP 6 PLACES  
U1, U2, W1  
U2, V2, W2 TERMINALS)



DETAIL A  
CUSTOMER CONNECTION  
DETAIL VIEW (THERMAL)



CUSTOMER CONNECTION  
DETAIL VIEW

- NOTES:
1. TIGHTEN TERMINAL BLOCK SCREWS TO 16 IN/LBS. TORQUE.
  2. TERMINAL WIRE SIZE: 4-14 AWG.
  3. TERMINAL WIRE SIZE: 6 AWG - 350 MCM.
  4. TIGHTEN TERMINAL BLOCK SCREWS TO 200 IN/LBS. TORQUE.

THE COMPONENT, PART OR ASSEMBLY DESCRIBED IN THIS DOCUMENT MUST COMPLY WITH THE EU(EUROPEAN UNION) DIRECTIVE RoHS2		MATERIAL		CONFIDENTIAL AND PROPRIETARY INFORMATION THIS DOCUMENT CONTAINS CONFIDENTIAL AND PROPRIETARY INFORMATION OF MTE CORPORATION AND MAY NOT BE USED, COPIED OR DISCLOSED TO OTHERS EXCEPT WITH THE AUTHORIZED WRITTEN PERMISSION OF MTE CORPORATION	
CONTAINS <0.1% OF ANY SVHC BY WEIGHT PER REACH REGULATION				DESCRIPTION	
UNLESS OTHERWISE SPECIFIED DIMENSIONS ARE IN INCHES [MM] TOLERANCES ARE: ANGLES: ± 1 ° 1 PLACE .X: ± .1 [2.5] 2 PLACE .XX: ± .03 [0.76] 3 PLACE .XXX: ± .010 [0.254]		MTE AN BL POWER ELECTRONICS COMPANY N83 W13330 Leon Road Menomonee Falls, WI 53051 USA 800.455-4693 262.253-8200		SWG 305A 380-480V 2-8kHz FILTER NEMA 3R	
DRAWN MN		DATE 08/29/13		SIZE D	
CHECKED JM		DATE 02/15/17		DWG No. CD SWGW0305D	
APPROVED JM		DATE 02/15/17		REV 06	
SCALE 1:6				SHEET 1 OF 1	