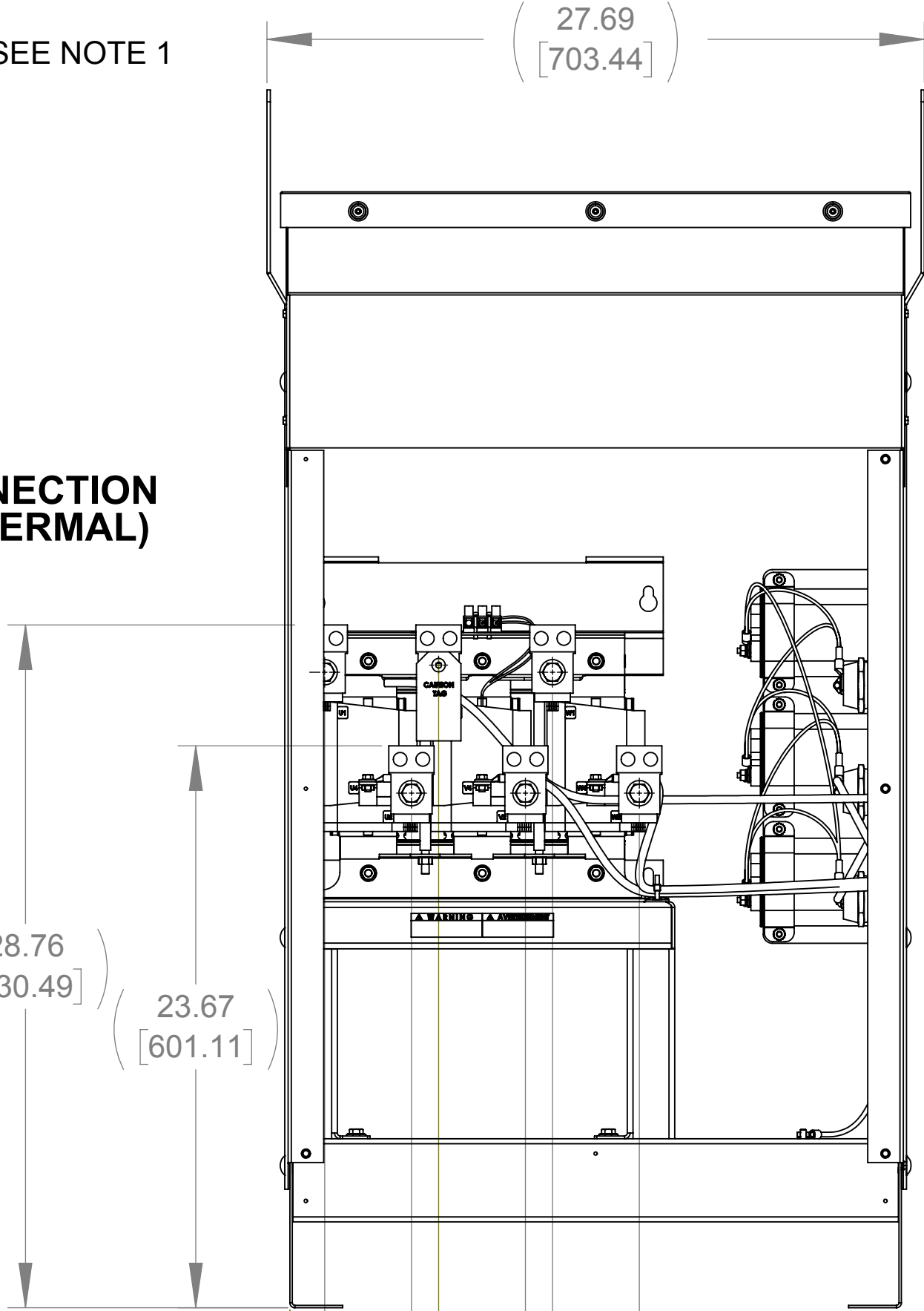
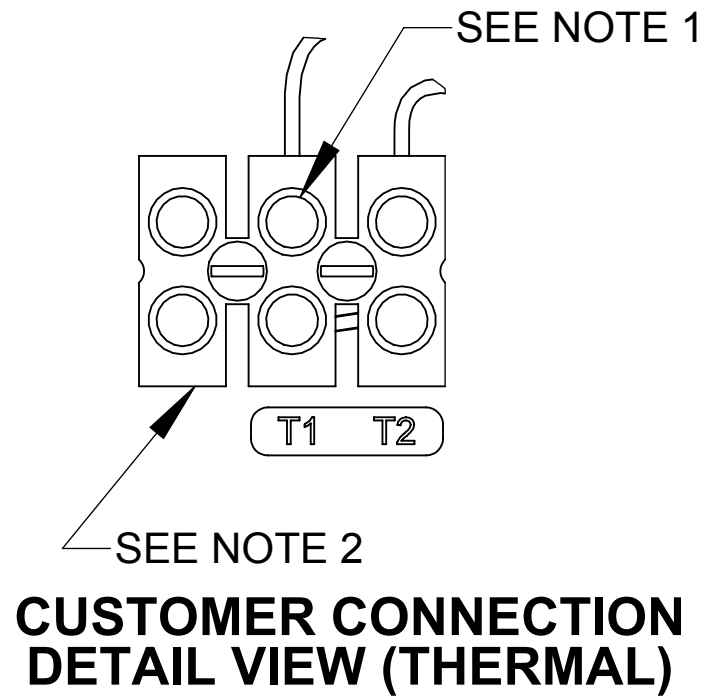
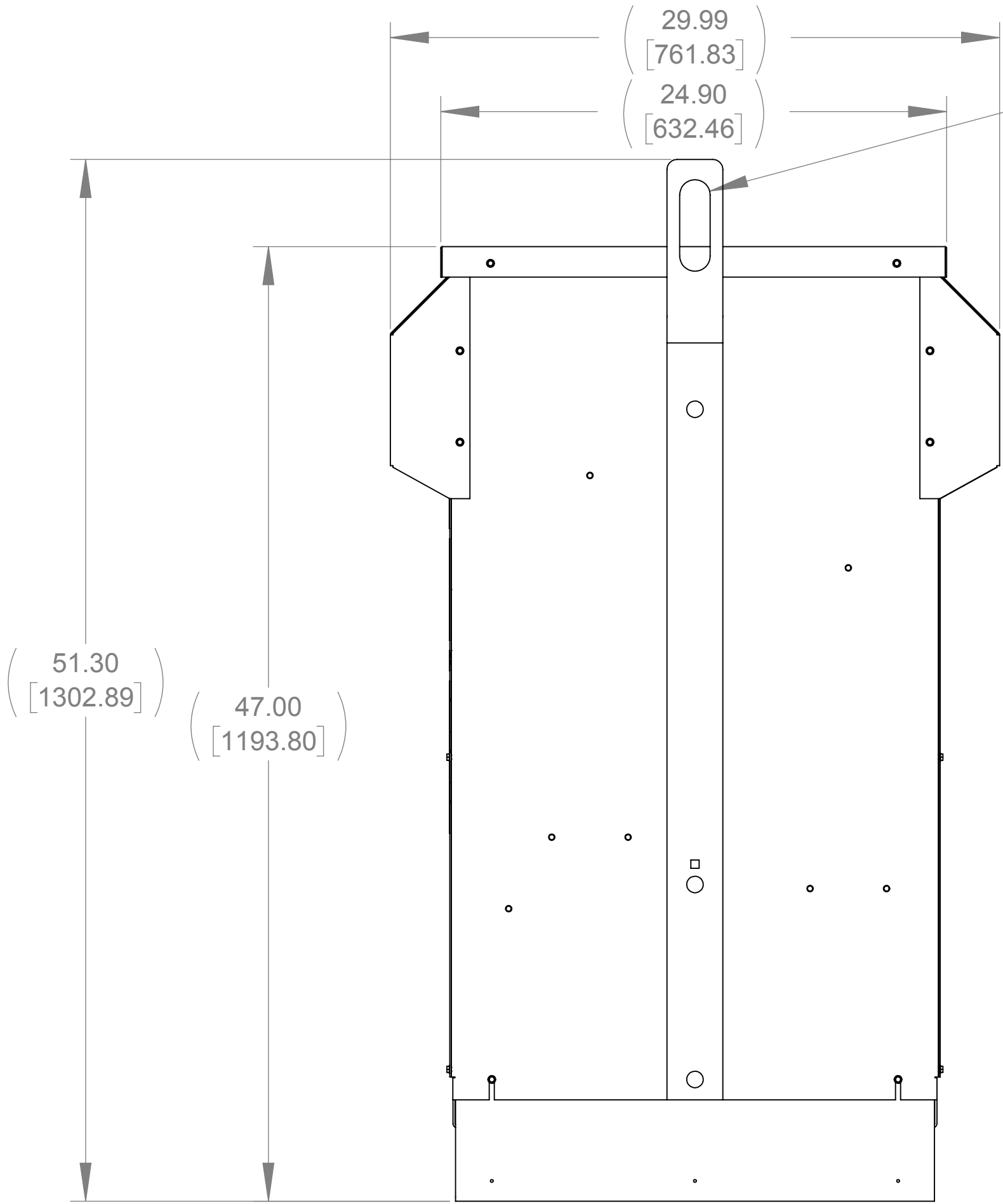


WEIGHT (LBS)  
407

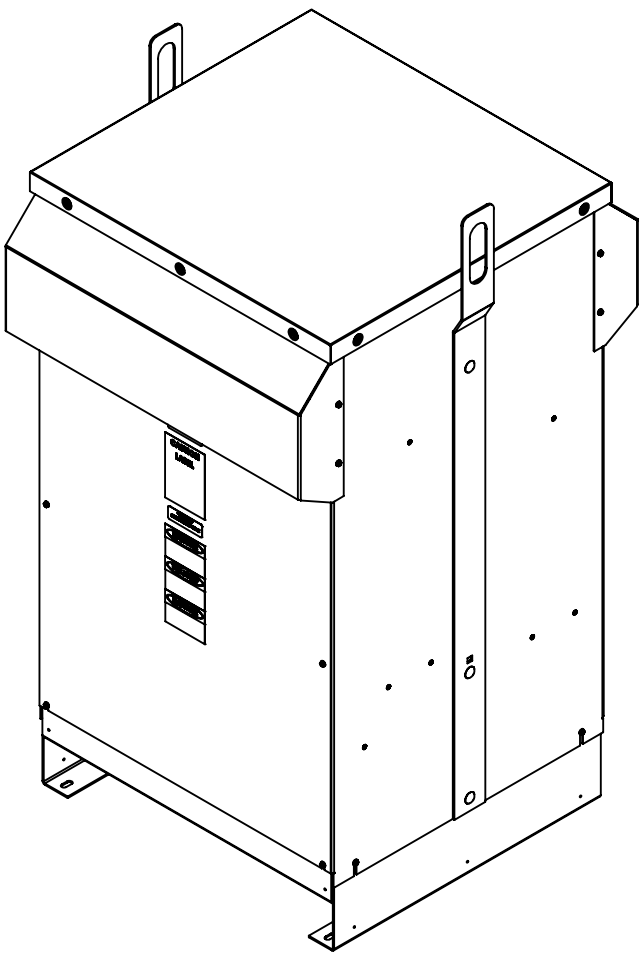
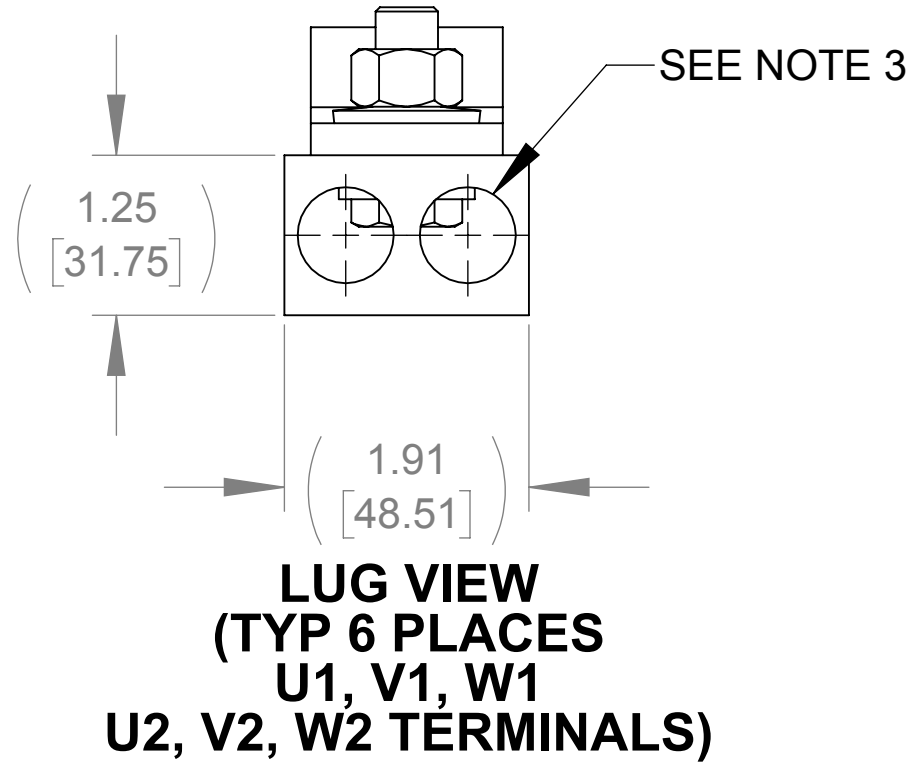
ECO No	DESCRIPTION	REV BY	DATE
M8994	CHANGED ALL WARNING, CAUTION, DANGER LABELS TO SAMPLIFIED	KV	02/13/14



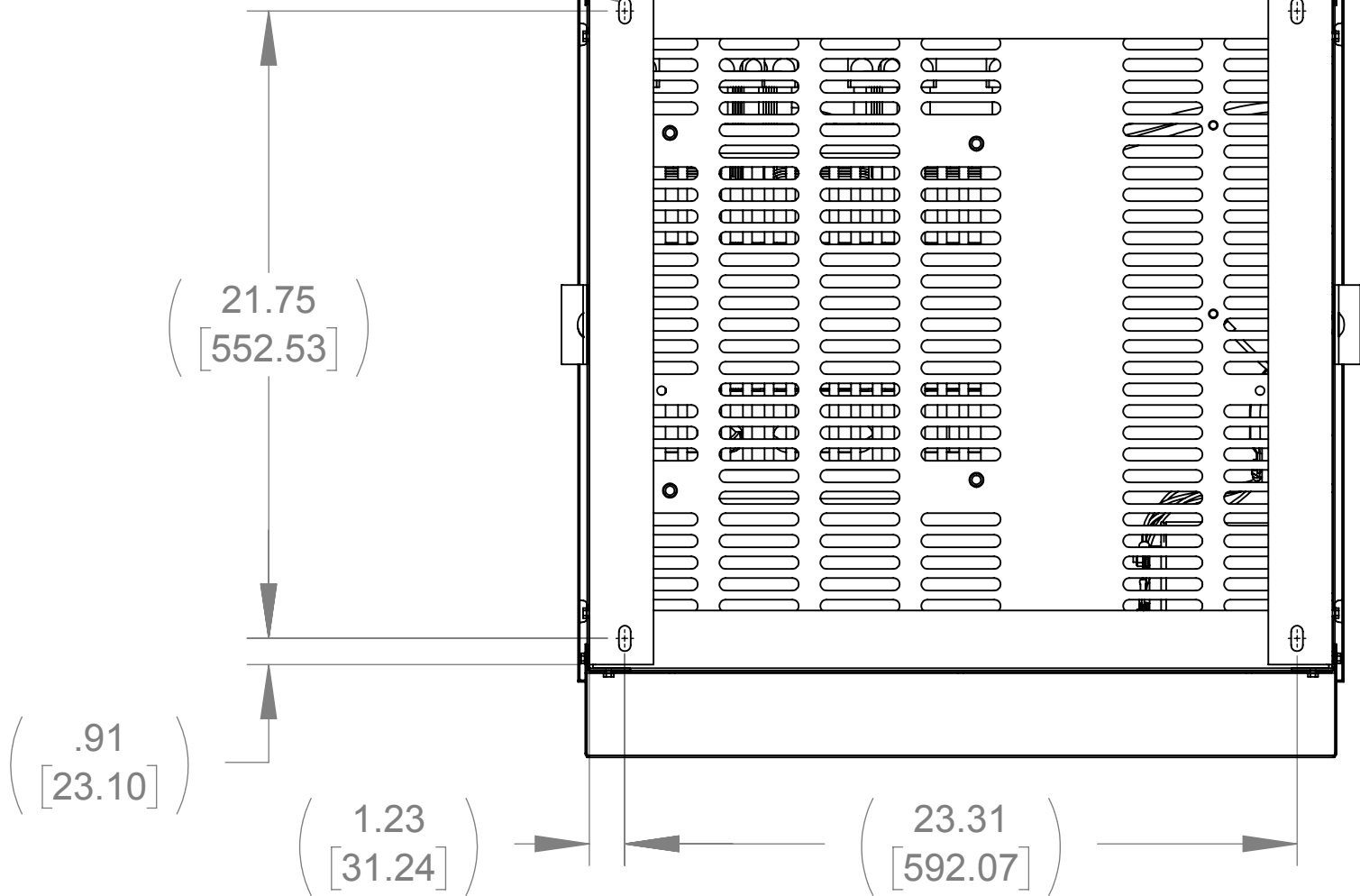
FRONT VIEW  
(FRONT PANEL REMOVED)



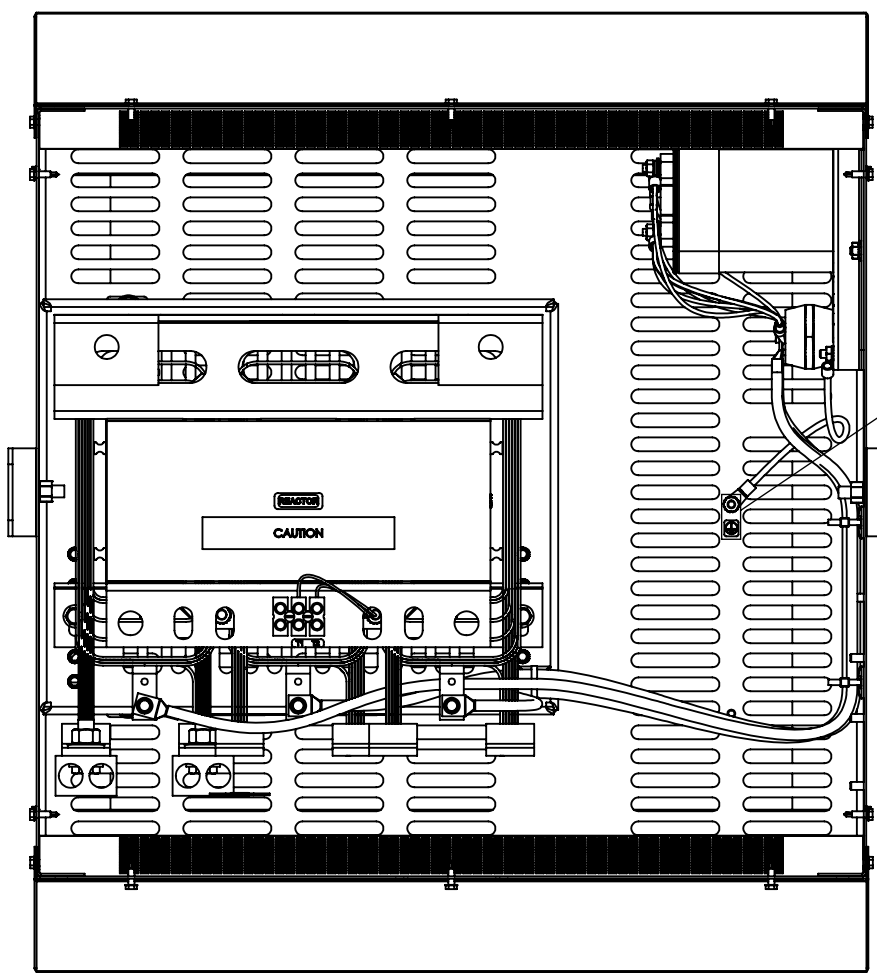
RIGHT SIDE VIEW



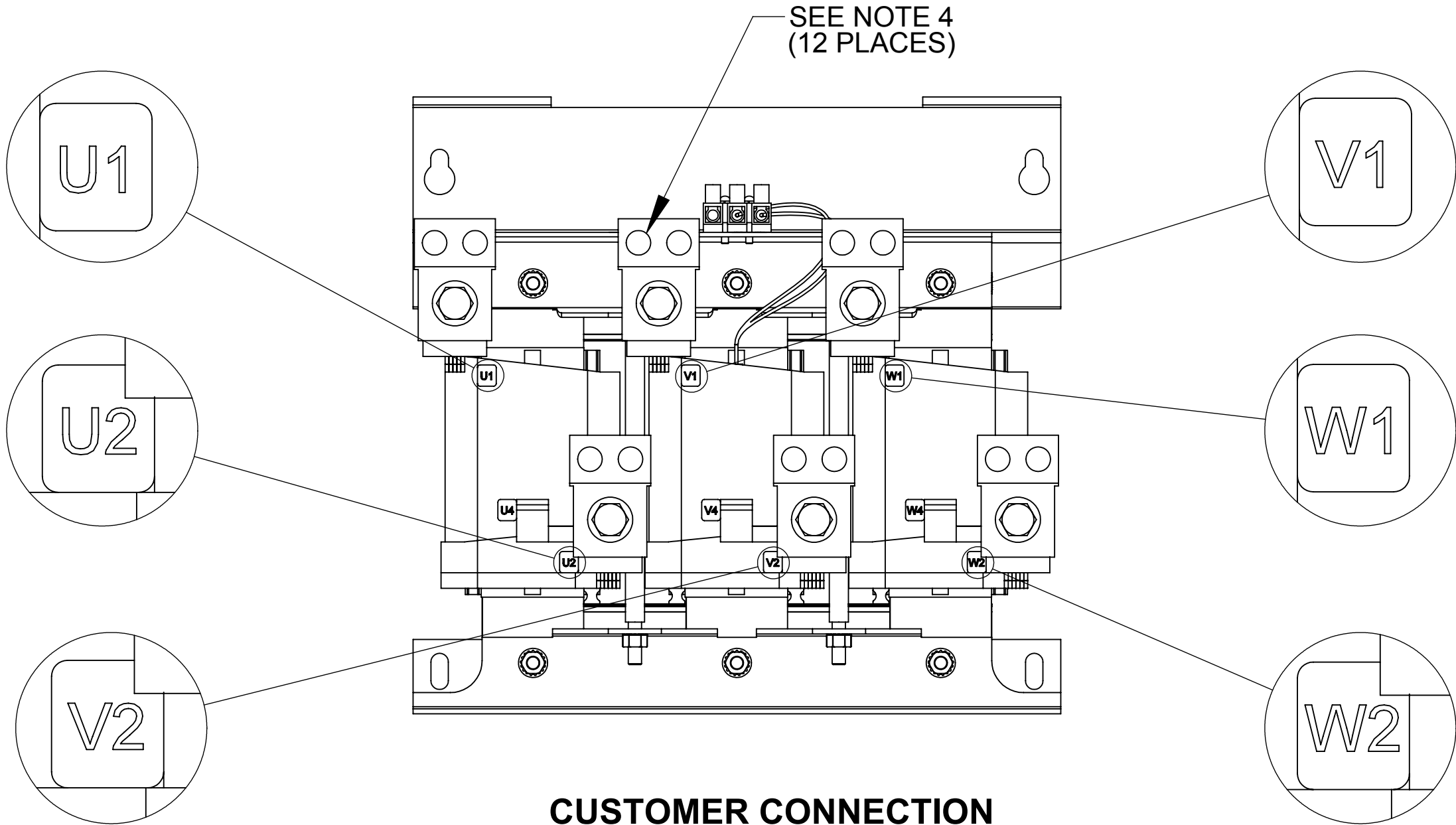
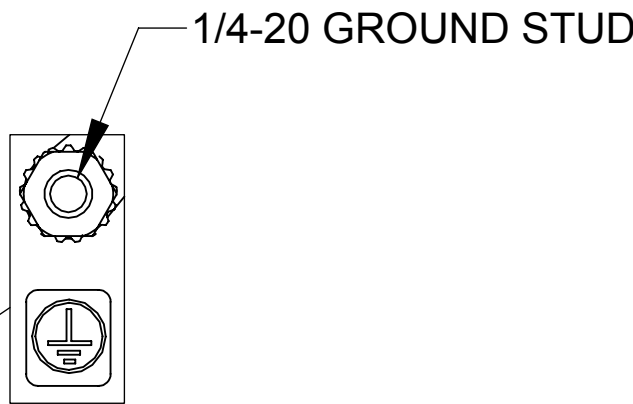
.41 [10.41] X .88 [22.35]  
SLOT, 4 PLACES



BOTTOM VIEW




TOP VIEW  
(TOP HAT REMOVED)



CUSTOMER CONNECTION  
DETAIL VIEW

- NOTES:
1. TIGHTEN TERMINAL BLOCK SCREWS TO 16 IN/LBS. TORQUE, MAX.
  2. TERMINAL WIRE SIZE: 4-14 AWG.
  3. TERMINAL WIRE SIZE: 6 AWG - 350 MCM.
  4. TIGHTEN TERMINAL BLOCK SCREWS TO 200 IN/LBS. TORQUE, MAX.

THE COMPONENT, PART OR ASSEMBLY DESCRIBED IN THIS DOCUMENT MUST COMPLY WITH THE EU(EUROPEAN UNION) DIRECTIVE RoHS2		MATERIAL		CONFIDENTIAL AND PROPRIETARY INFORMATION THIS DOCUMENT CONTAINS CONFIDENTIAL AND PROPRIETARY INFORMATION OF MTE CORPORATION AND MAY NOT BE USED, COPIED OR DISCLOSED TO OTHERS EXCEPT WITH THE AUTHORIZED WRITTEN PERMISSION OF MTE CORPORATION					
CONTAINS <0.1% OF ANY SVHC BY WEIGHT PER REACH REGULATION				DESCRIPTION					
UNLESS OTHERWISE SPECIFIED DIMENSIONS ARE IN INCHES [MM] TOLERANCES ARE:  ANGLES: ± 1 °  1 PLACE .X: ± .1 [2.5]  2 PLACE .XX: ± .03 [0.76]  3 PLACE .XXX: ± .010 [0.254]		  N83 W13330 Leon Road Menomonee Falls, WI 53051 USA 800.455-4683 262.253-8200		SWG 250A 380-480V 2-8kHz FILTER NEMA 3R					
		DRAWN MN	DATE 08/28/13	SIZE D		DWG No. CD SWGW0250D		REV 02	
		CHECKED JM	DATE 02/13/14						
		APPROVED JM	DATE 02/13/14	SCALE 1:6		SHEET 1 OF 1			