

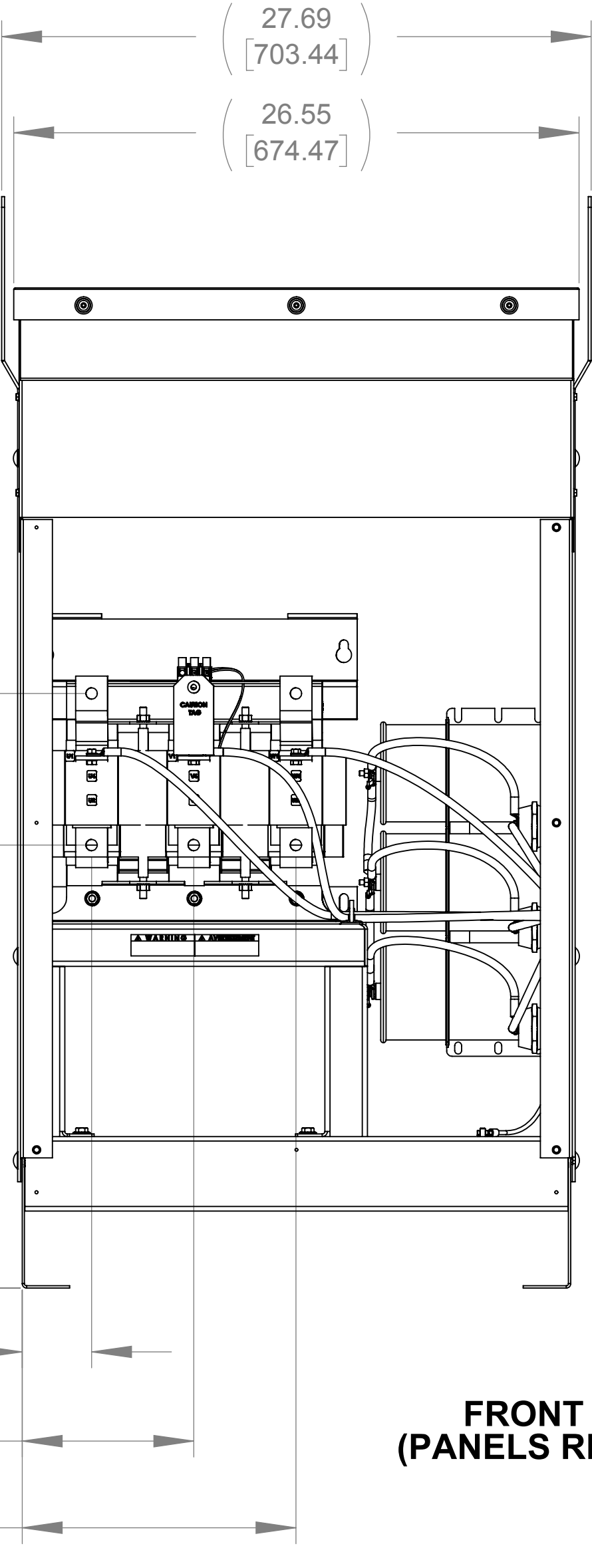
APPROX. WEIGHT  
(LBS)  
427

D

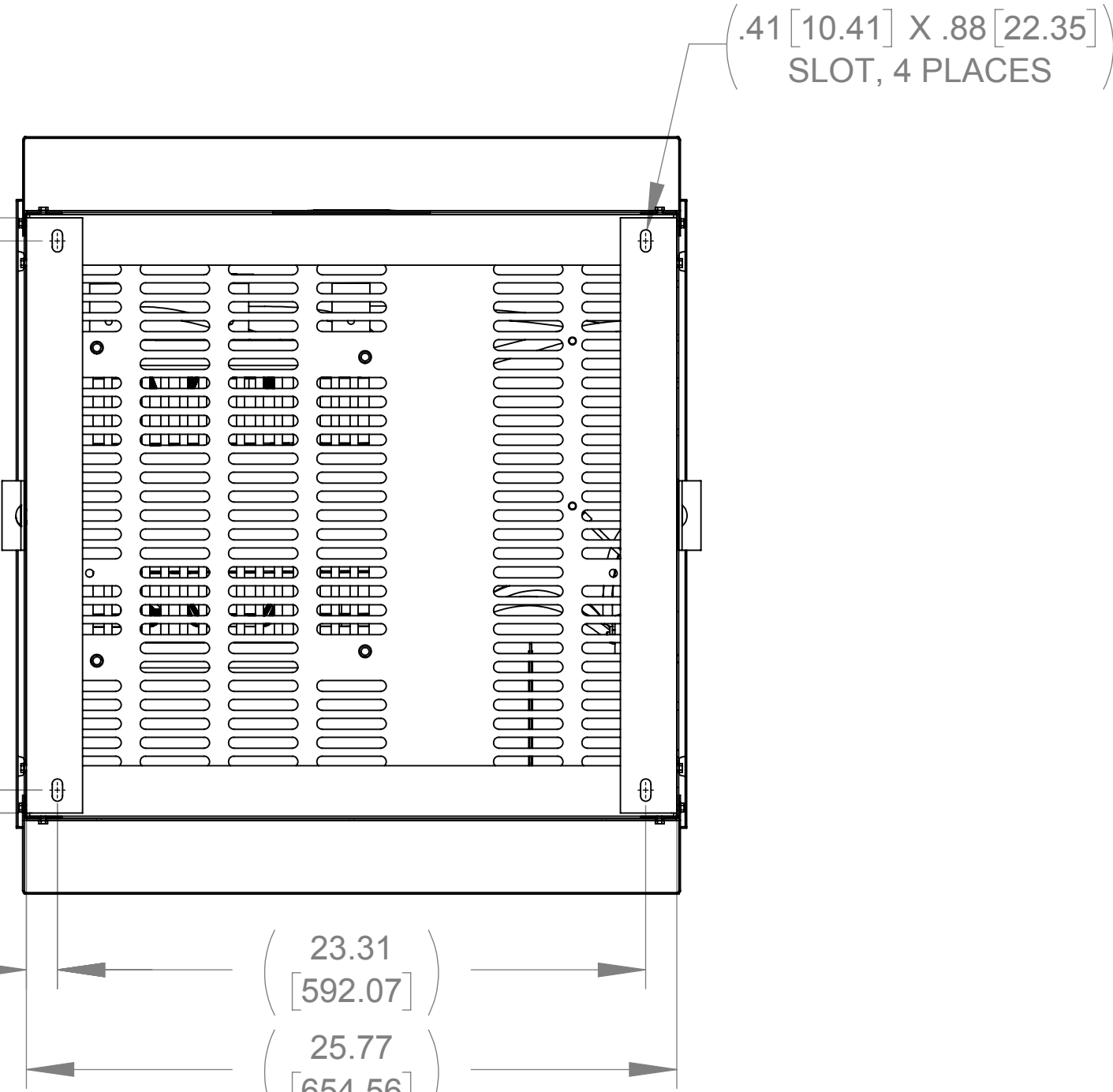
C

B

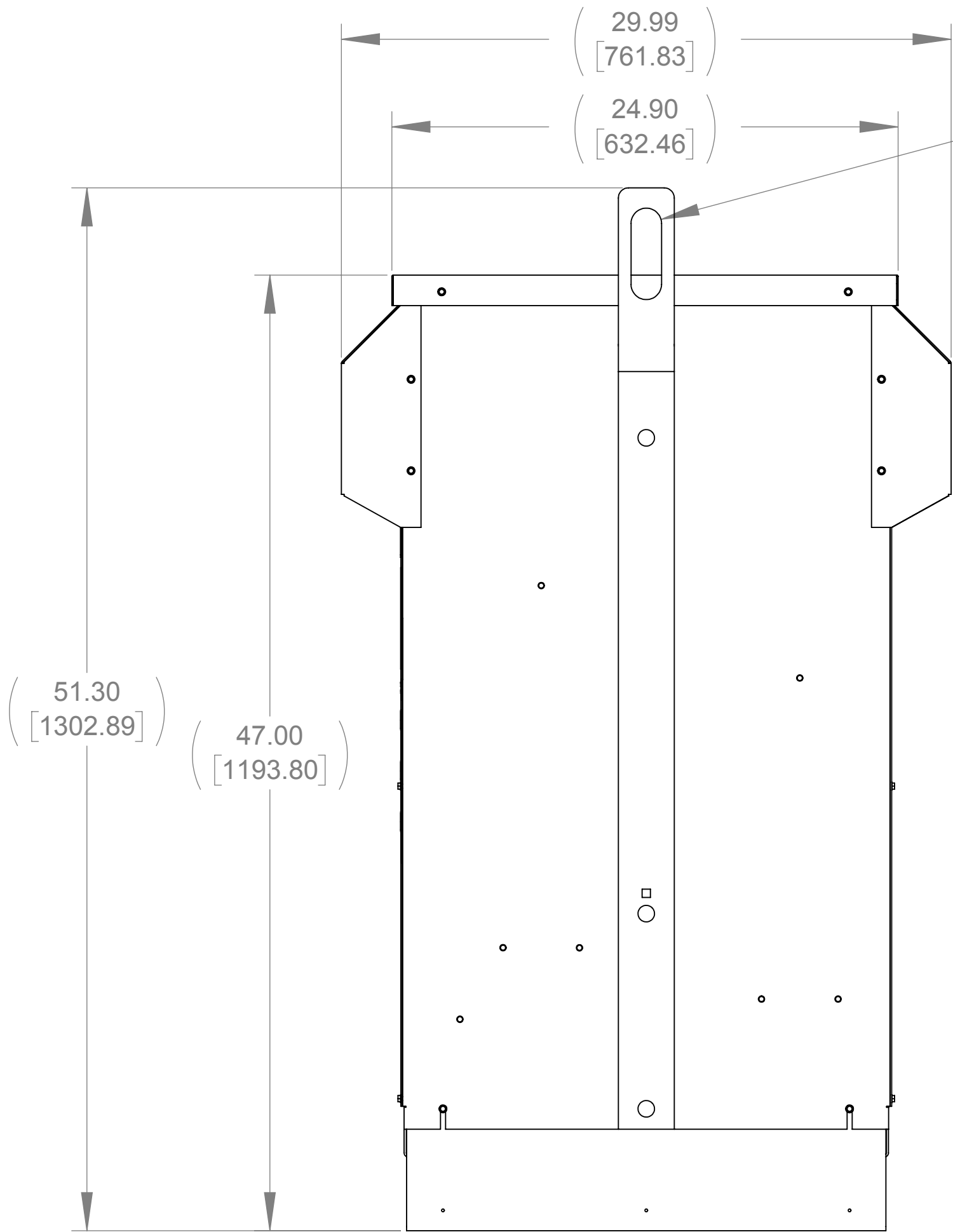
A



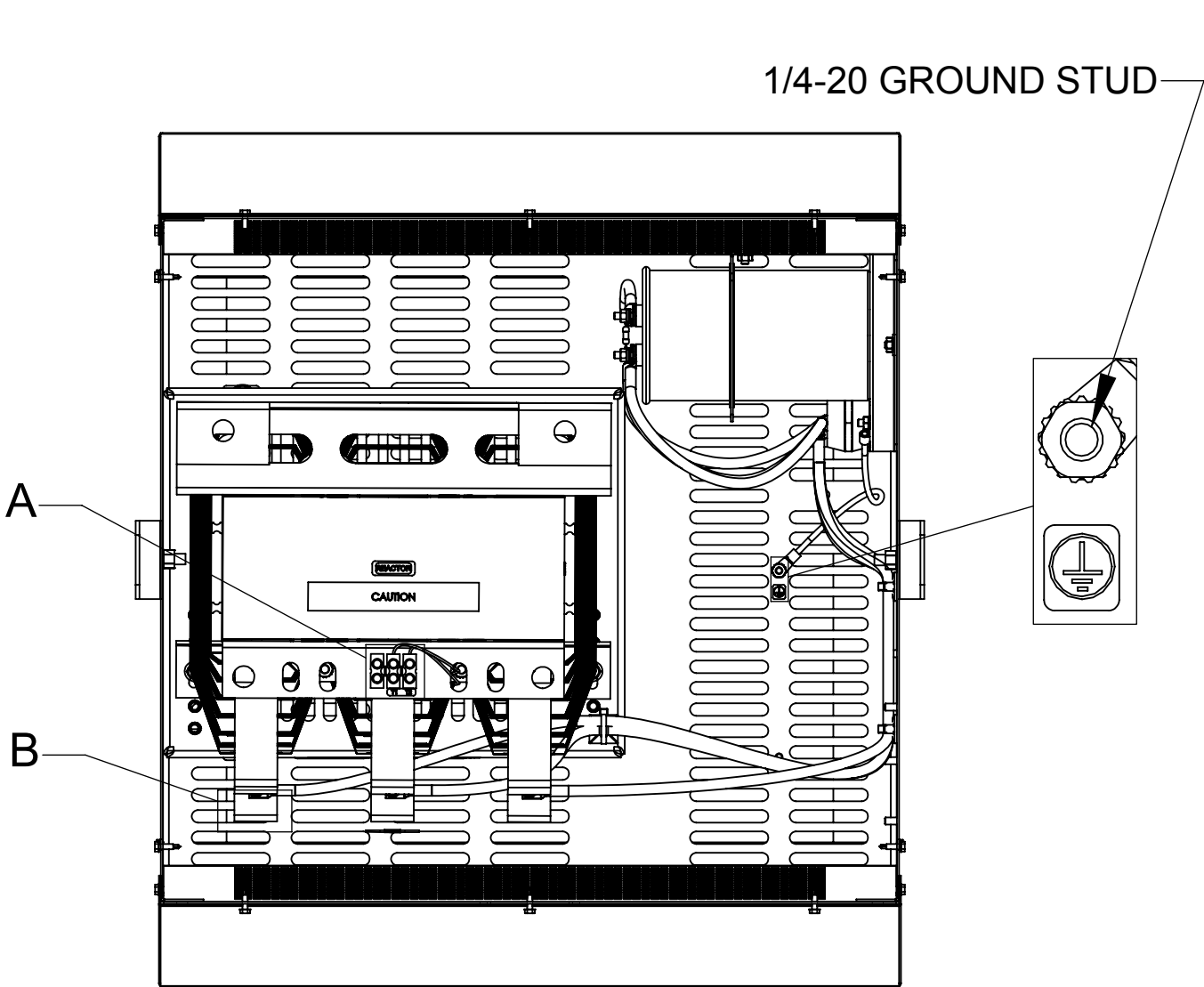
FRONT VIEW  
(PANELS REMOVED)



BOTTOM VIEW

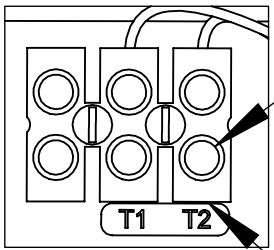


SIDE VIEW



TOP VIEW  
(PANELS REMOVED)

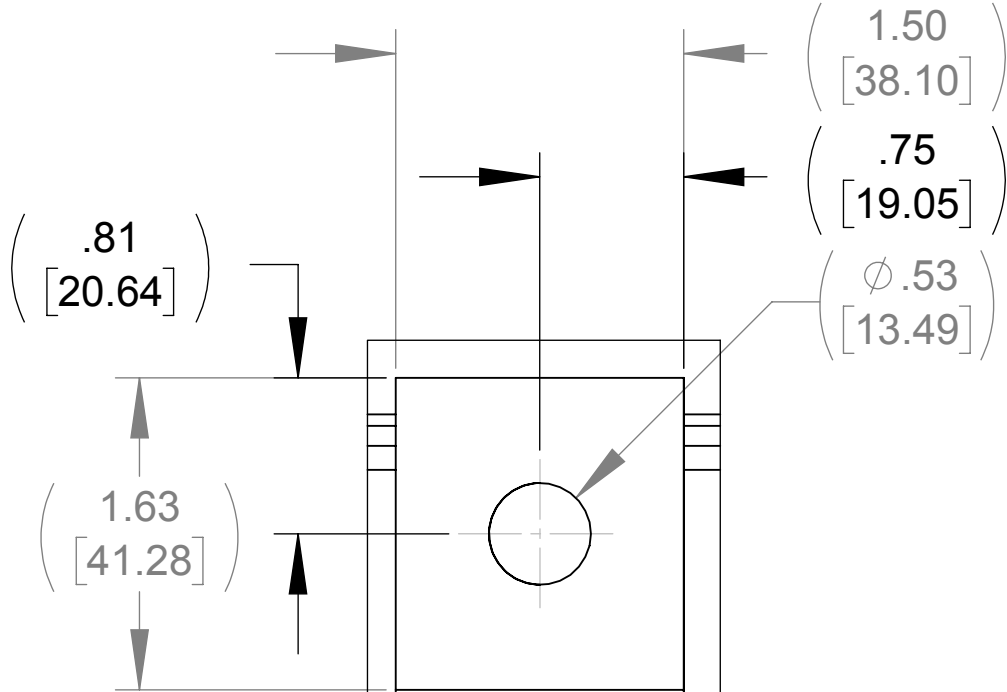
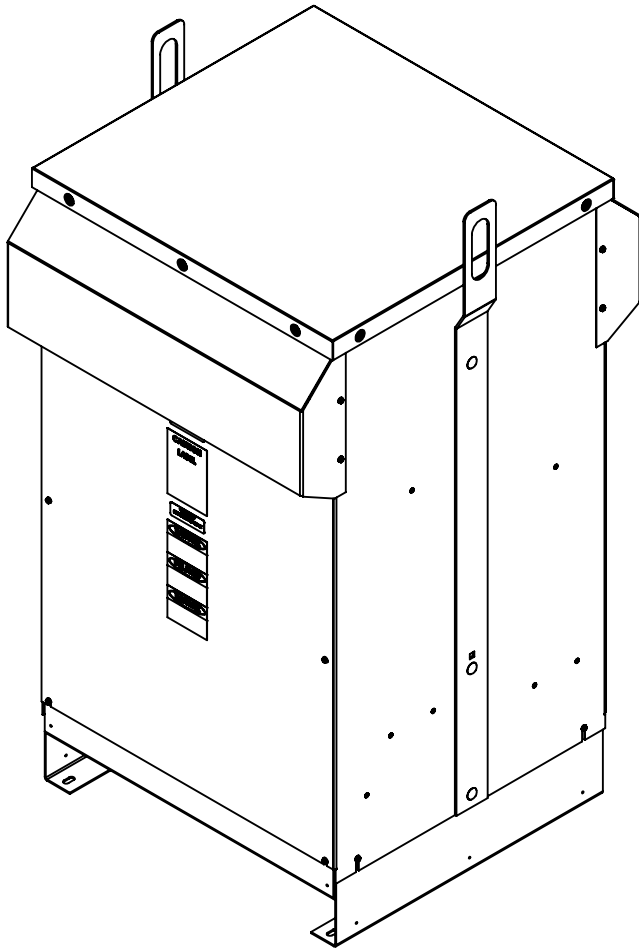
1.50 [38.10] X 4.50 [114.30]  
SLOT, 2 PLACES



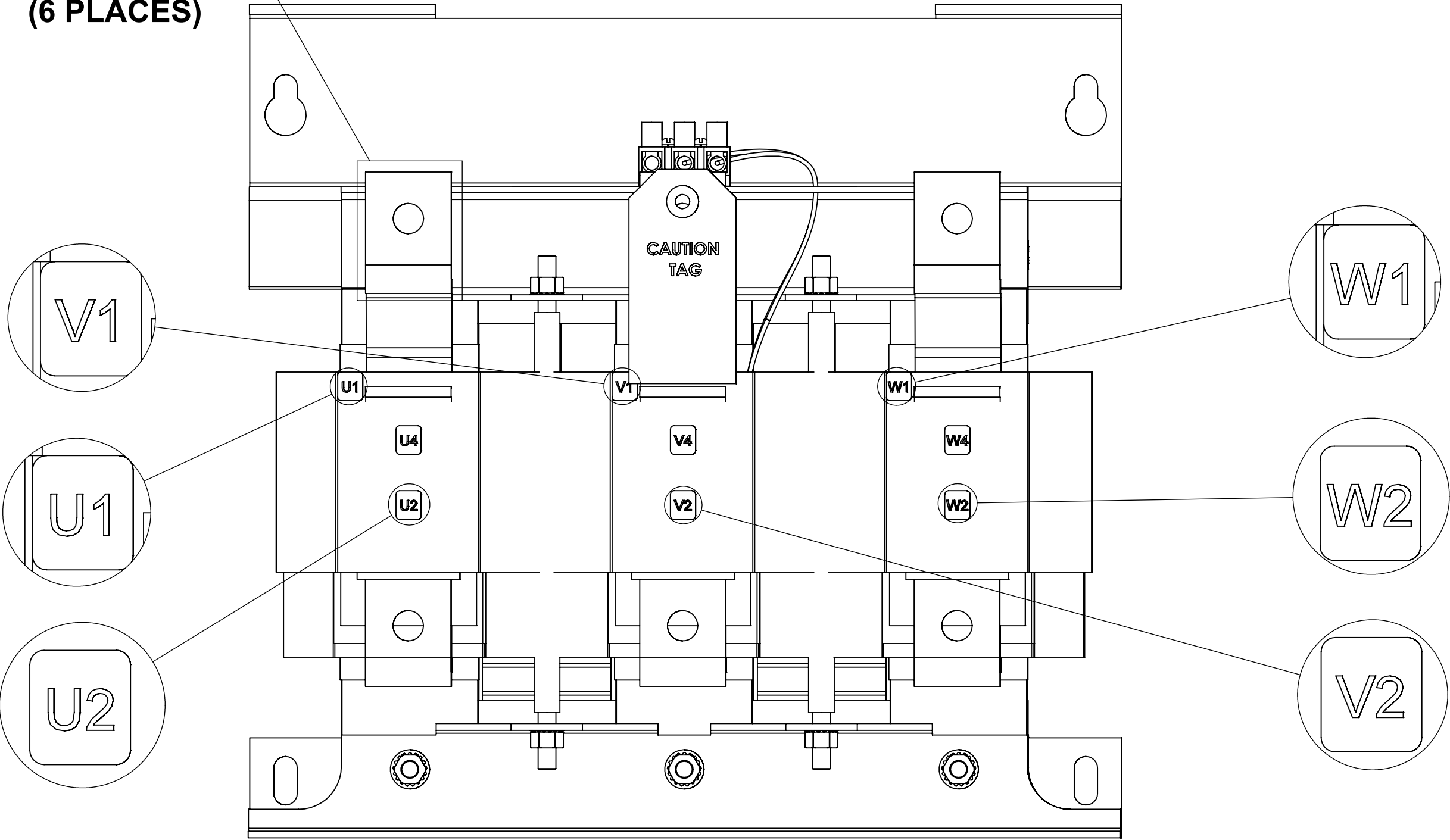
SEE NOTE 1

SEE NOTE 2

DETAIL A  
CUSTOMER CONNECTION  
DETAIL VIEW (THERMAL)




LUG VIEW  
(6 PLACES)



CUSTOMER CONNECTION  
DETAIL VIEW

NOTES:

1. TIGHTEN TERMINAL BLOCK SCREWS TO 16 IN/LBS. TORQUE.
2. TERMINAL WIRE SIZE: 4-14 AWG.

THE COMPONENT, PART OR ASSEMBLY DESCRIBED IN THIS DOCUMENT MUST COMPLY WITH THE EU(EUROPEAN UNION) DIRECTIVE RoHS2		MATERIAL		CONFIDENTIAL AND PROPRIETARY INFORMATION THIS DOCUMENT CONTAINS CONFIDENTIAL AND PROPRIETARY INFORMATION OF MTE CORPORATION AND MAY NOT BE USED, COPIED OR DISCLOSED TO OTHERS EXCEPT WITH THE AUTHORIZED WRITTEN PERMISSION OF MTE CORPORATION				
CONTAINS <0.1% OF ANY SVHC BY WEIGHT PER REACH REGULATION				DESCRIPTION				
UNLESS OTHERWISE SPECIFIED DIMENSIONS ARE IN INCHES [MM] TOLERANCES ARE:  ANGLES: ± 1 °  1 PLACE .X: ± .1 [2.5]  2 PLACE .XX: ± .03 [0.76]  3 PLACE .XXX: ± .010 [0.254]	 <div>N83 W13330 Leon Road Menomonee Falls, WI 53051 USA 800.455.4693 262.253.8200</div>	DRAWN	DATE	SWG 200A 600V 2-8kHz FILTER, NEMA 3R ENCL		SIZE D	DWG No. CD SWGW0200E	REV 00
		MN	08/20/18					
		CHECKED	DATE					
		MN	09/20/18					
		APPROVED	DATE			SCALE 1:6	SHEET 1 OF 1	
		TL	10/09/18					