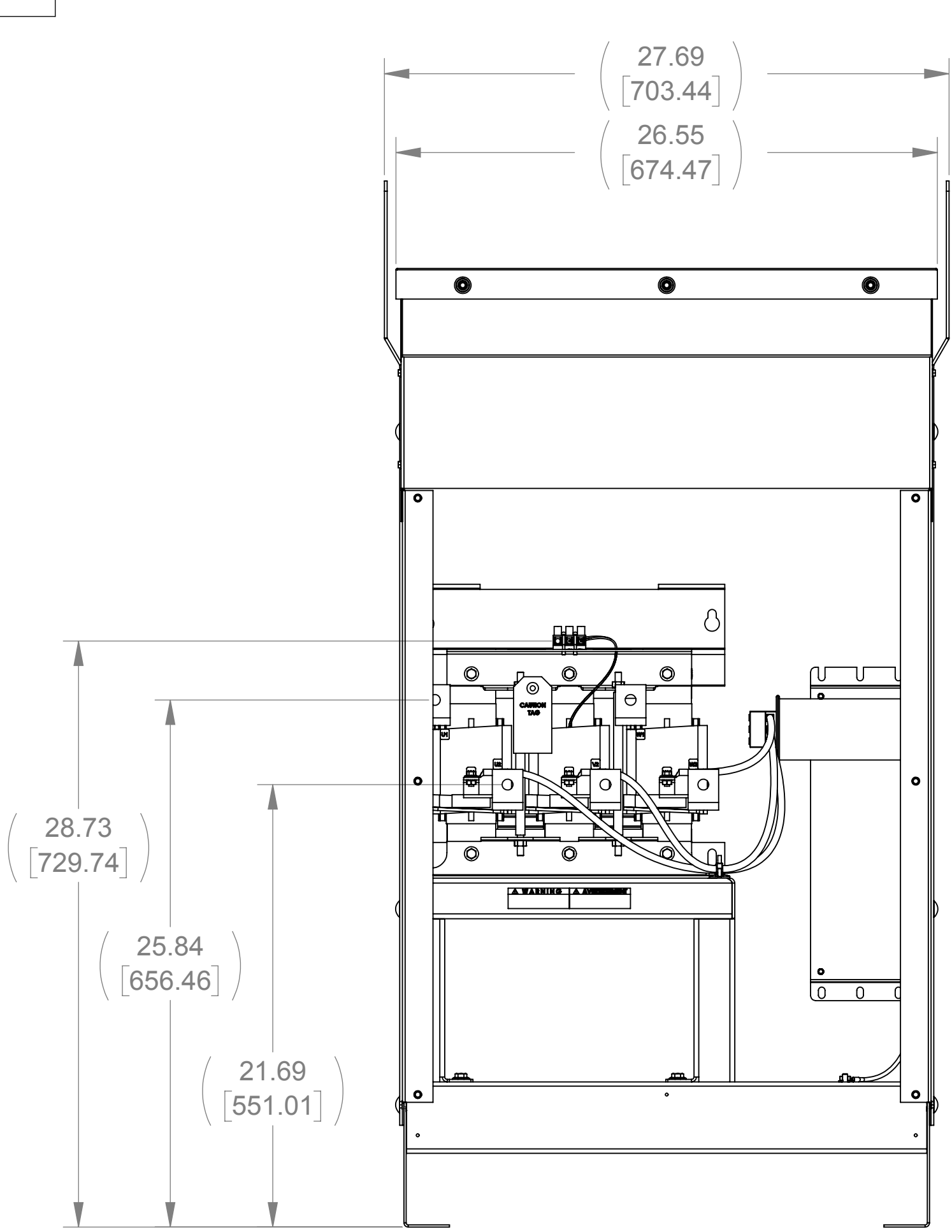
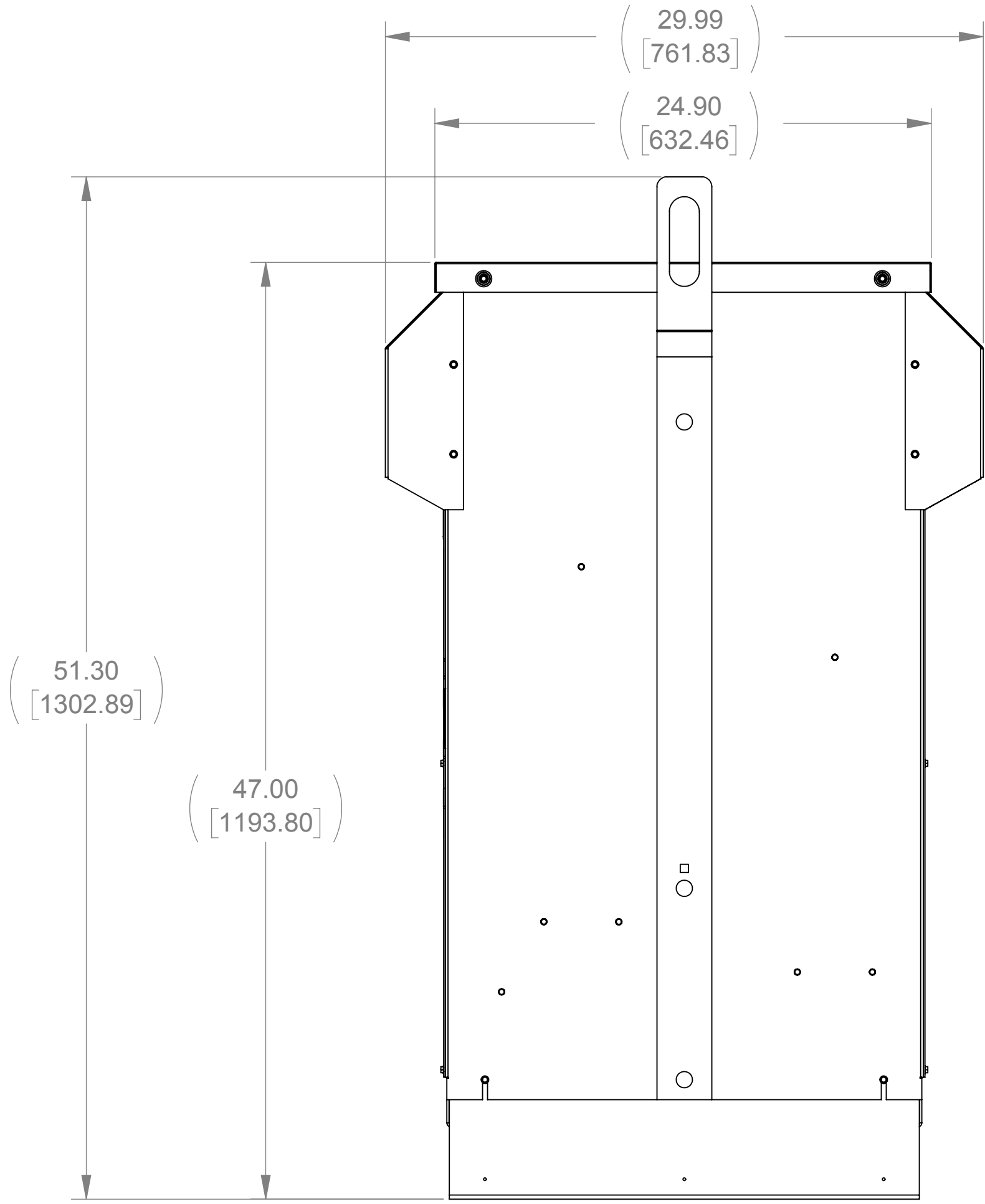


APPROX. WEIGHT
(LBS)
345

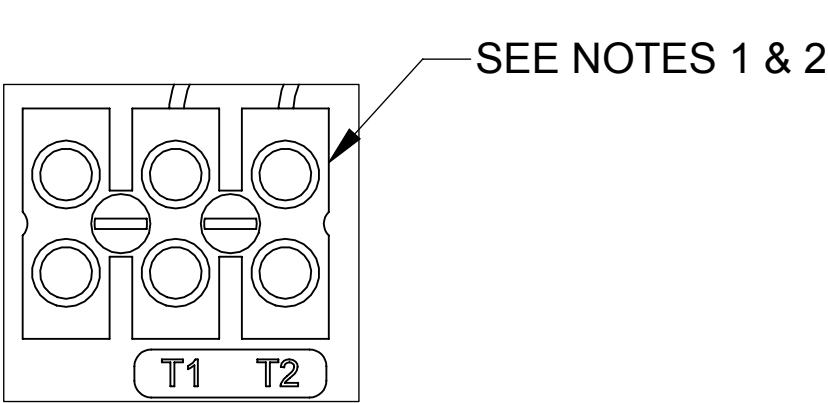
ECO No	DESCRIPTION	REV BY	DATE



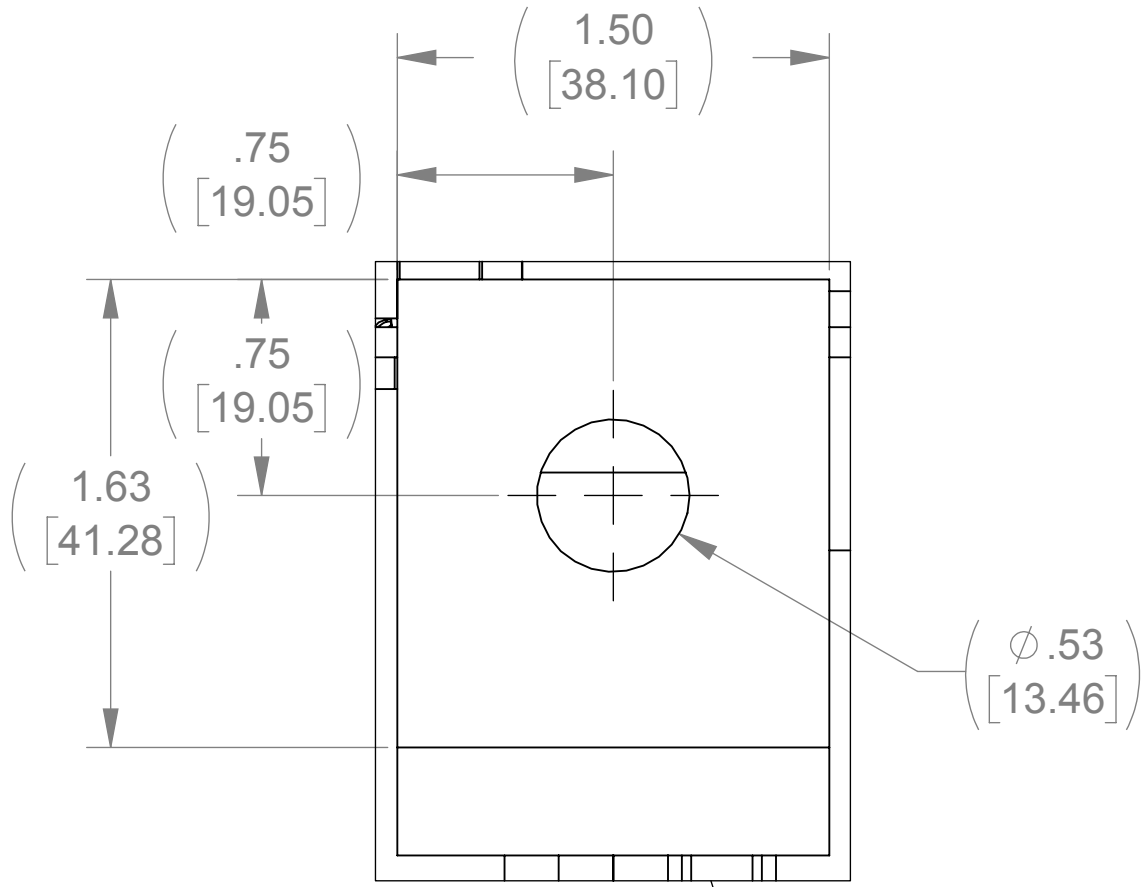
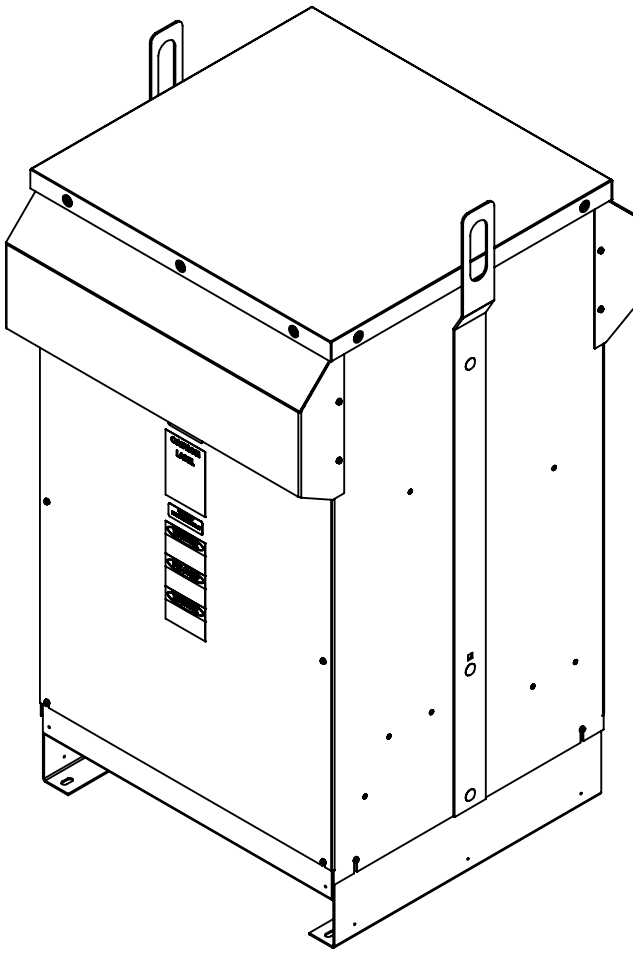
FRONT VIEW
(FRONT PANEL REMOVED)



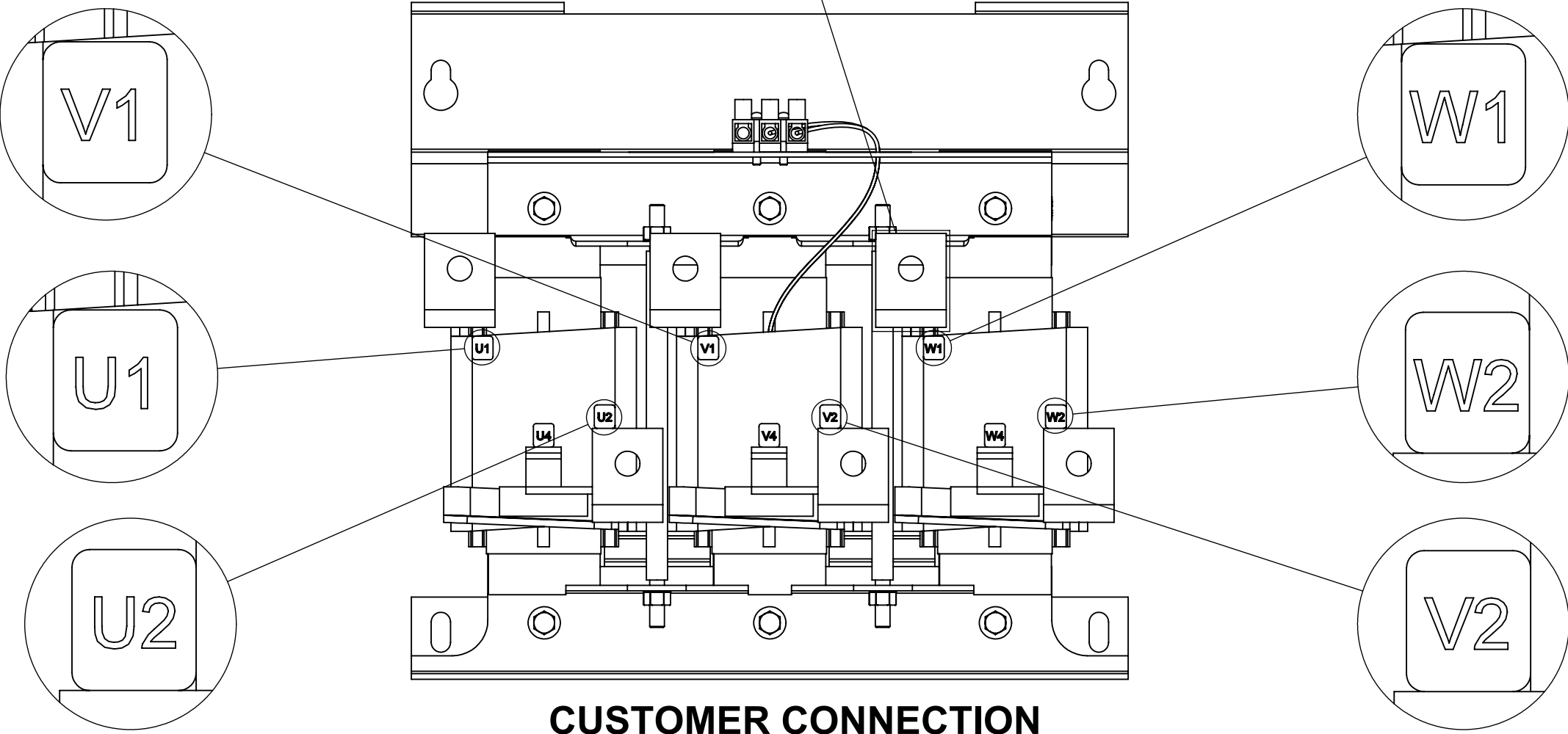
RIGHT SIDE VIEW



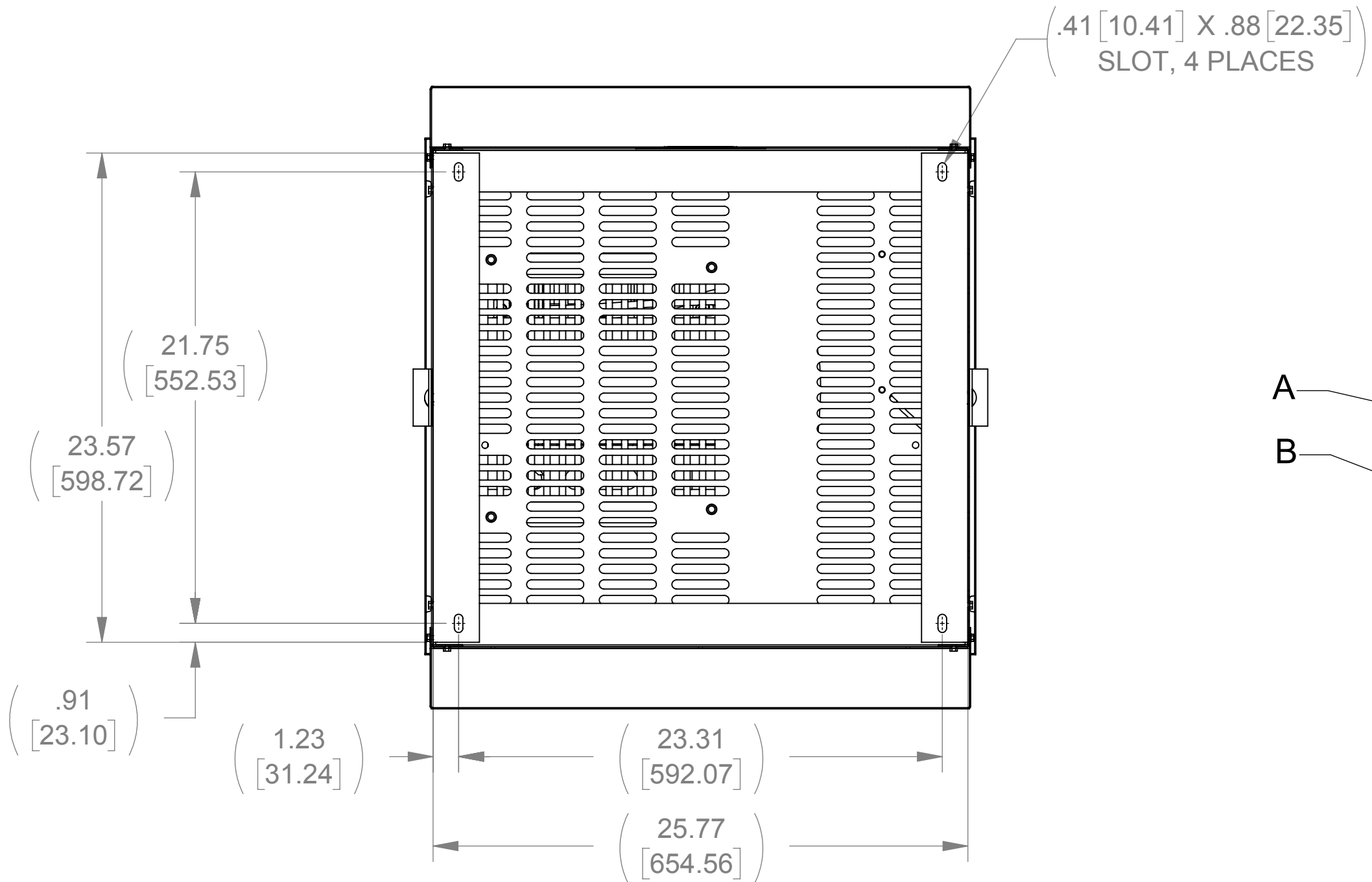
DETAIL A
CUSTOMER CONNECTION
DETAIL VIEW (THERMAL)



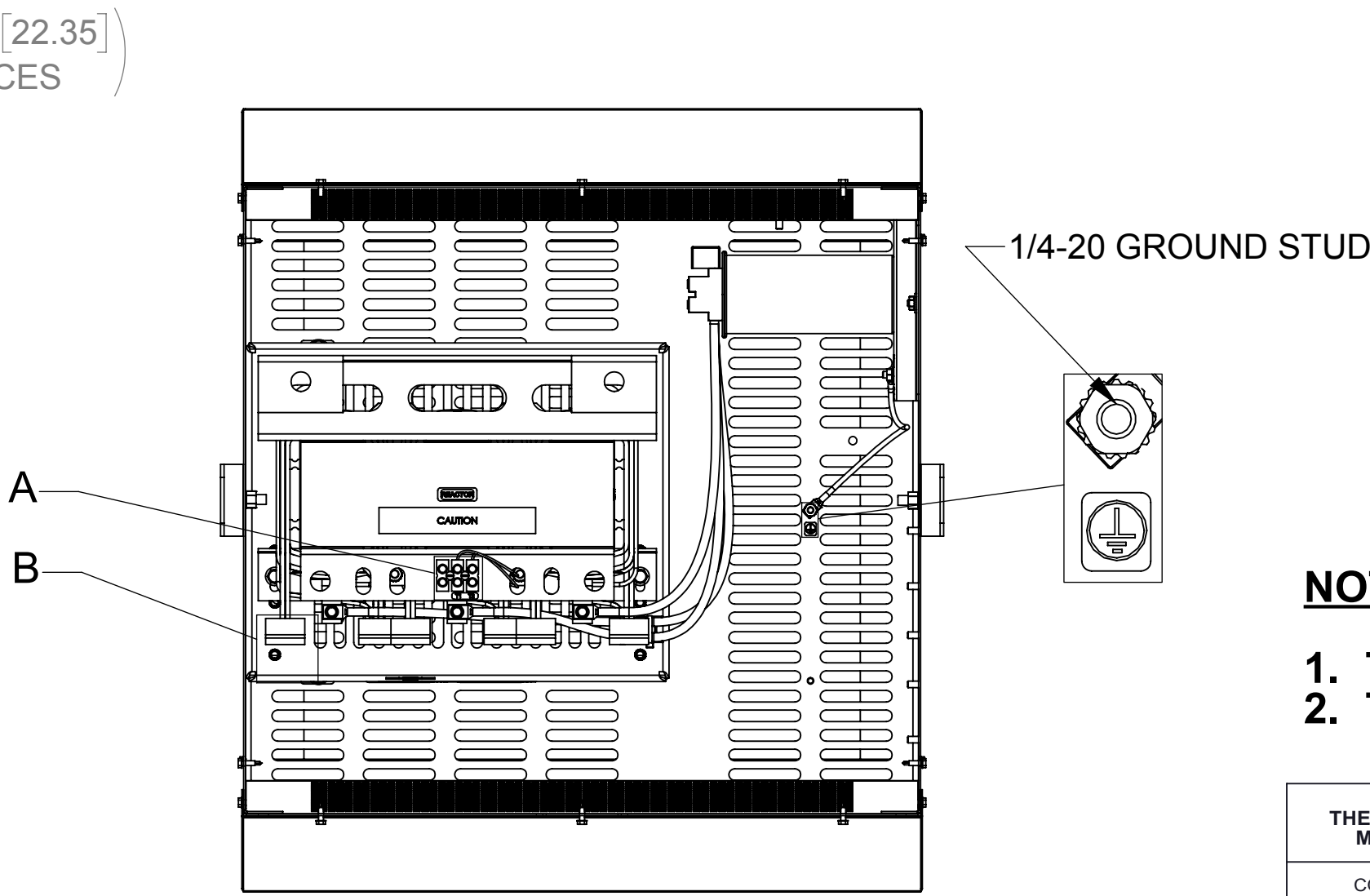
LUG VIEW
(6 PLACES)



CUSTOMER CONNECTION
DETAIL VIEW




BOTTOM VIEW



TOP VIEW
(TOP HAT REMOVED)

NOTES:

1. TIGHTEN TERMINAL BLOCK SCREWS TO 16 IN/LBS. TORQUE.
2. TERMINAL WIRE SIZE: 4-14 AWG.

THE COMPONENT, PART OR ASSEMBLY DESCRIBED IN THIS DOCUMENT MUST COMPLY WITH THE EU(EUROPEAN UNION) DIRECTIVE RoHS2		MATERIAL		CONFIDENTIAL AND PROPRIETARY INFORMATION THIS DOCUMENT CONTAINS CONFIDENTIAL AND PROPRIETARY INFORMATION OF MTE CORPORATION AND MAY NOT BE USED, COPIED OR DISCLOSED TO OTHERS EXCEPT WITH THE AUTHORIZED WRITTEN PERMISSION OF MTE CORPORATION			
CONTAINS <0.1% OF ANY SVHC BY WEIGHT PER REACH REGULATION				DESCRIPTION			
<div>UNLESS OTHERWISE SPECIFIED DIMENSIONS ARE IN INCHES [MM] TOLERANCES ARE:</div> <div>ANGLES: ± 1 °</div> <div>1 PLACE .X: ± .1 [2.5]</div> <div>2 PLACE .XX: ± .03 [0.76]</div> <div>3 PLACE .XXX: ± .010 [0.254]</div>		<div></div> <div>N83 W13330 Leon Road Menomonee Falls, WI 53051 USA 800.455.4683 262.253.8200</div>		DRAWN		DATE	
		MN		08/10/18			
		CHECKED		DATE			
		MN		08/10/18			
		APPROVED		DATE			
		TL		10/09/18			
				SIZE		DWG No.	
				D		CD SWGW0130E	
				SCALE		REV	
				1:6		00	
				SHEET 1 OF 1			