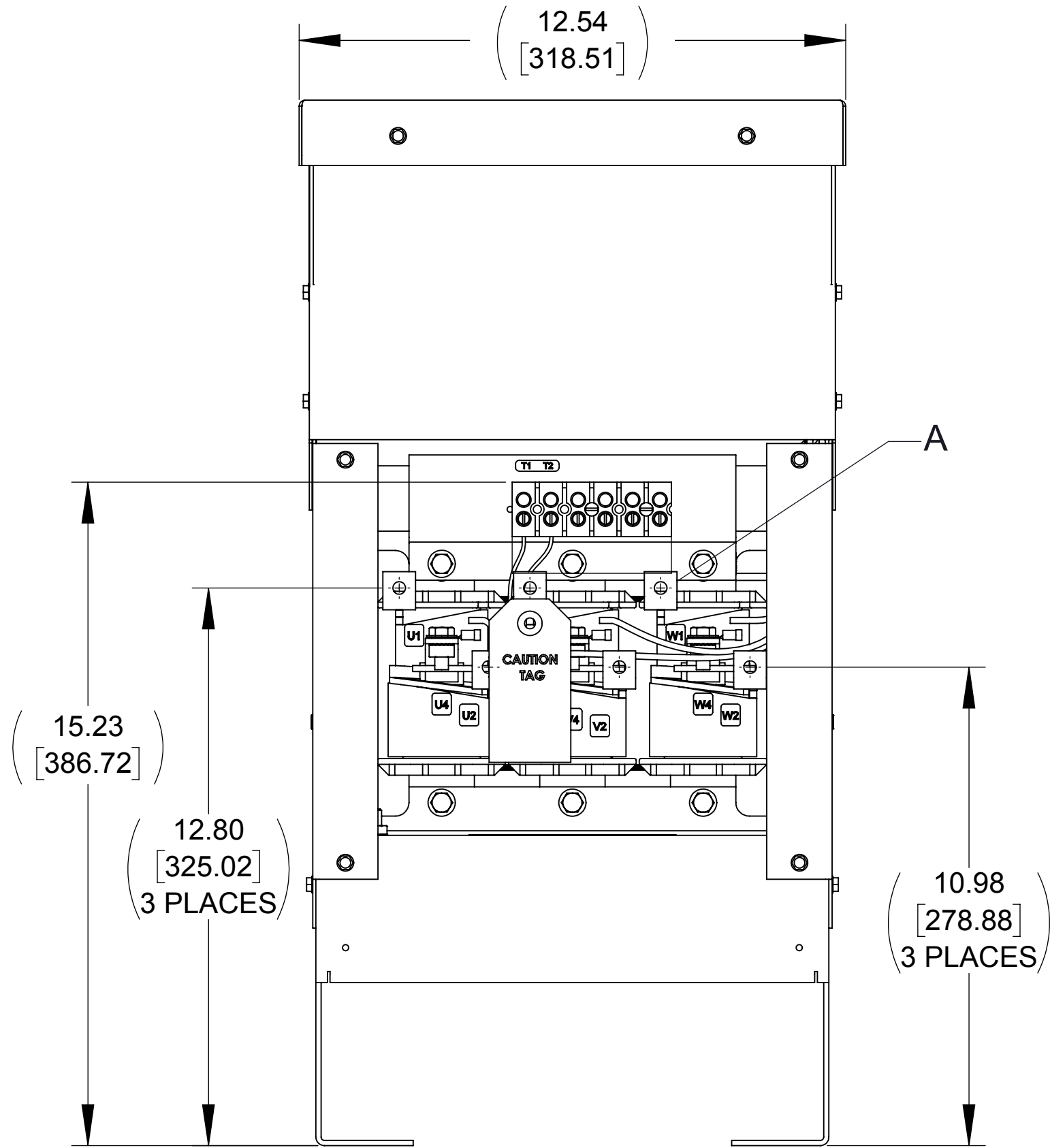
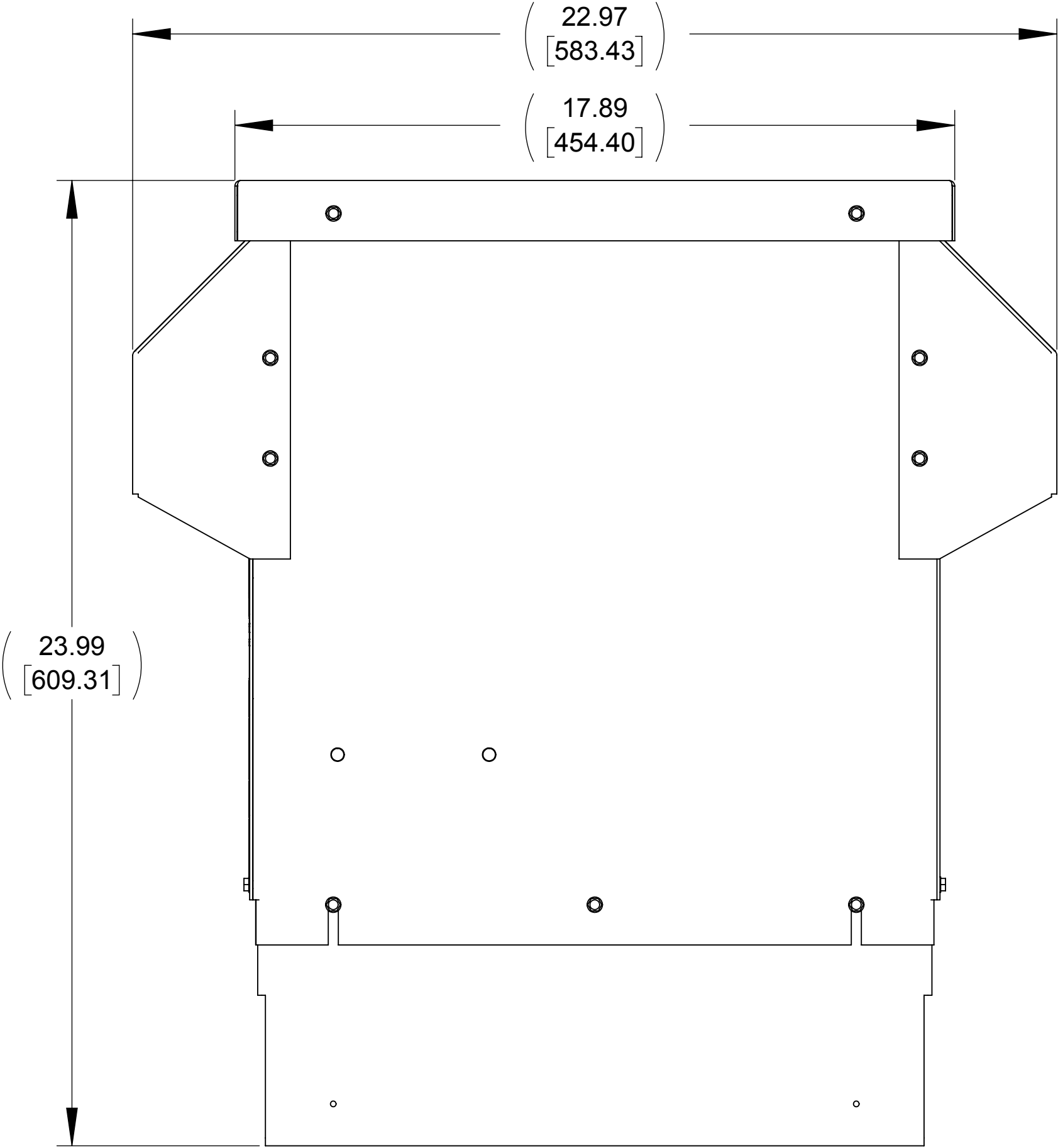


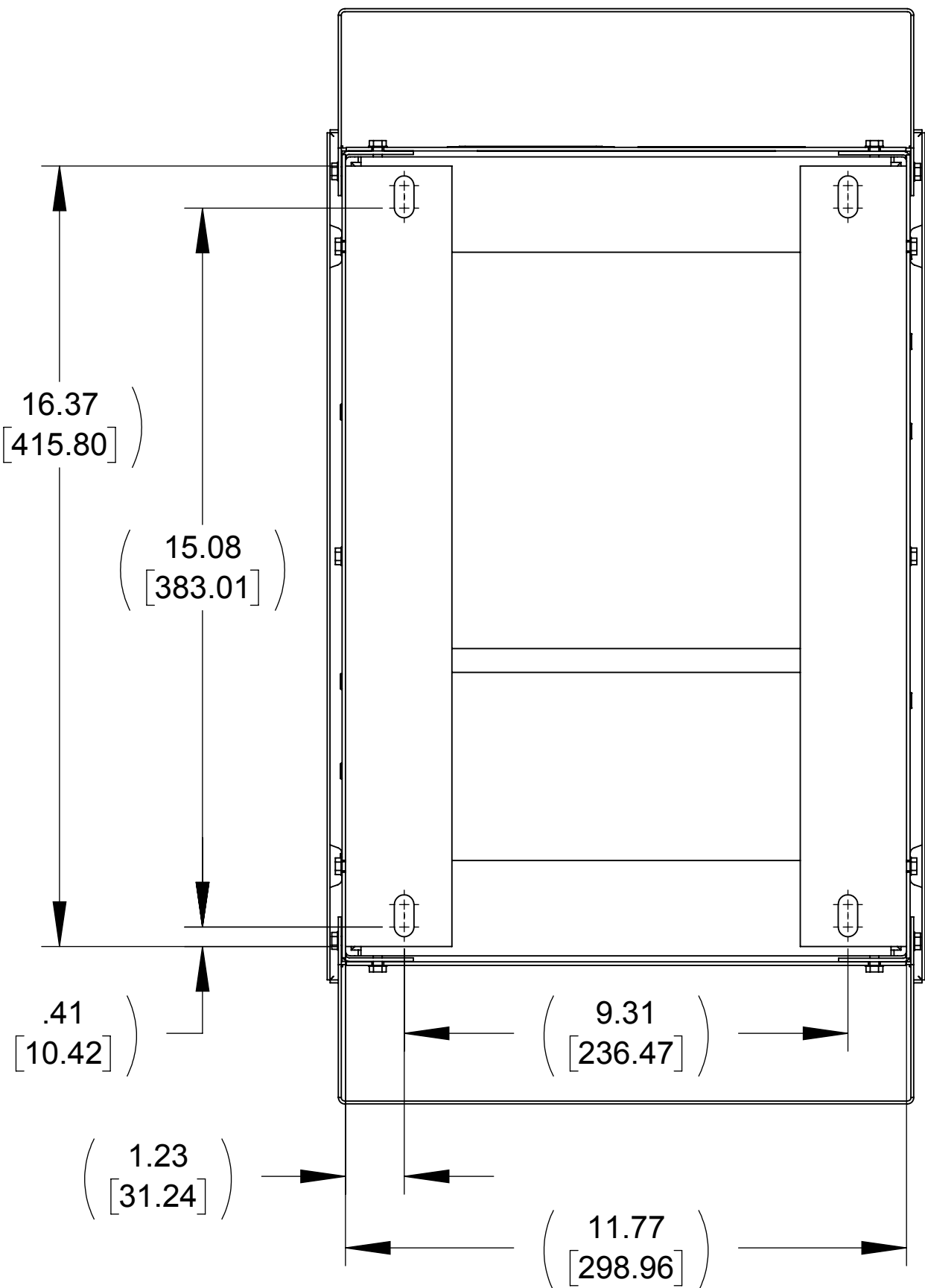
APPROX. WEIGHT
(LBS)
108



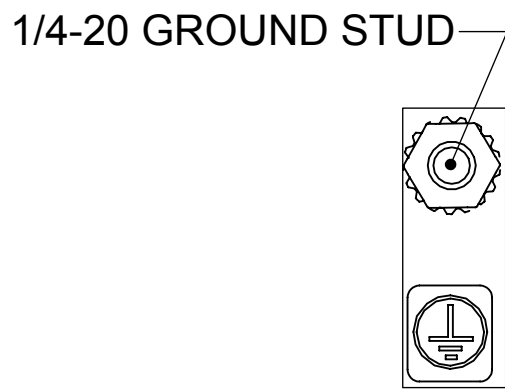
FRONT VIEW
(PANELS REMOVED)



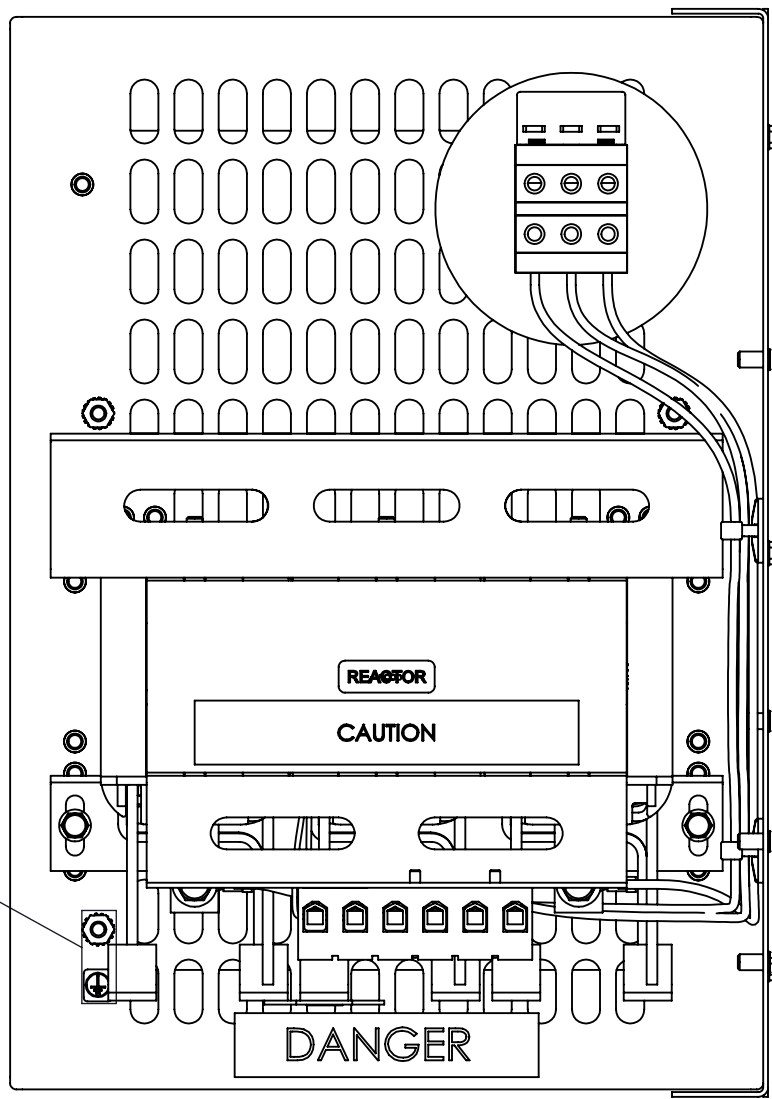
SIDE VIEW



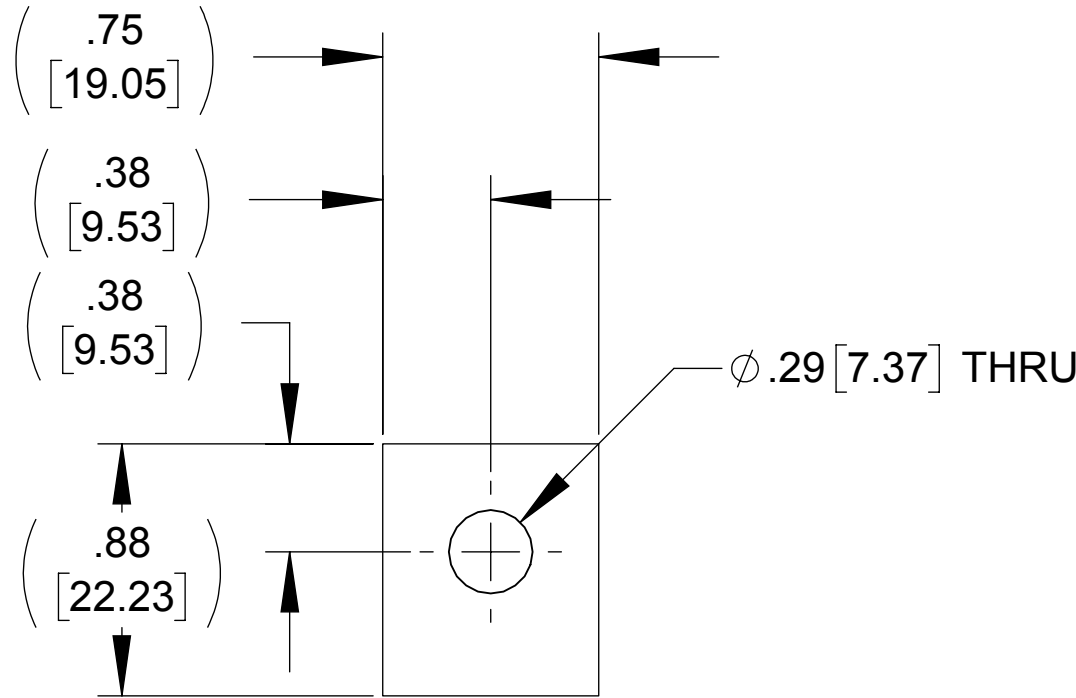
BOTTOM VIEW



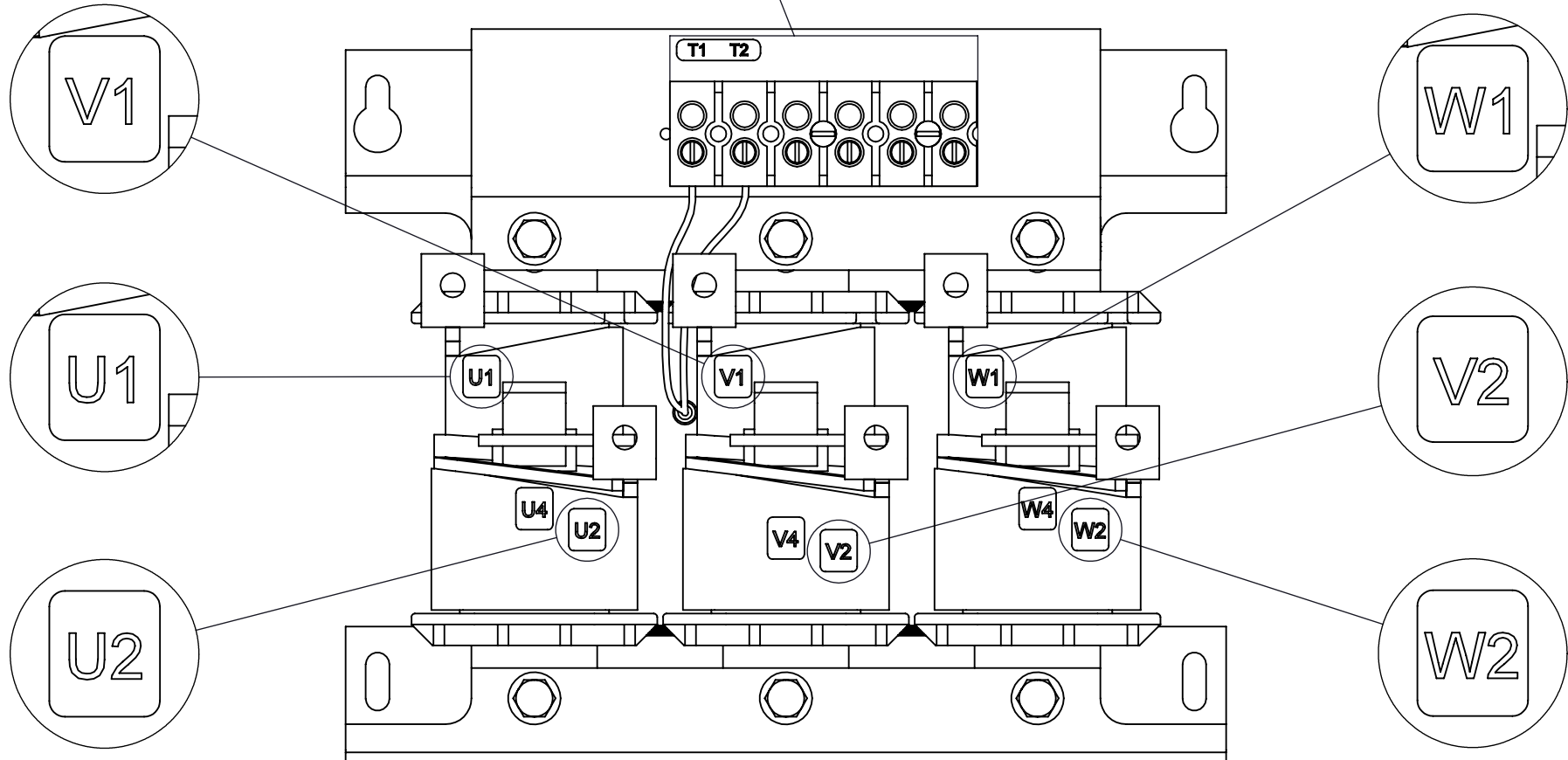
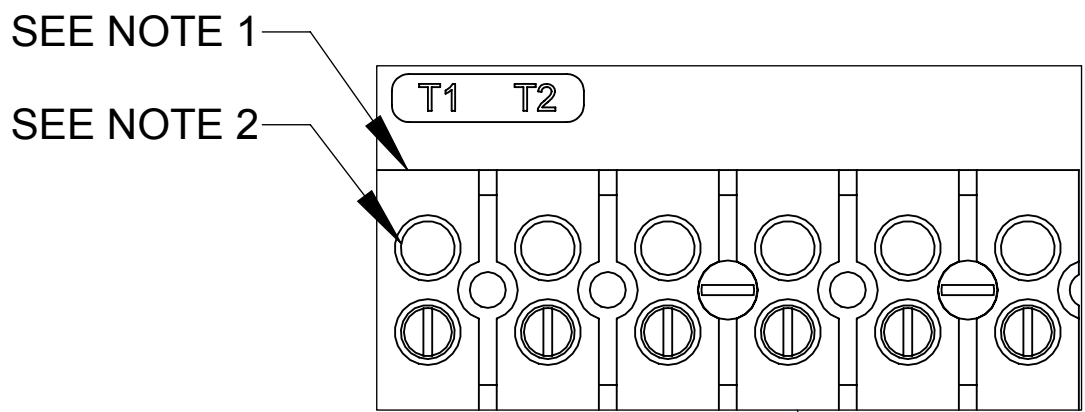
DETAIL A



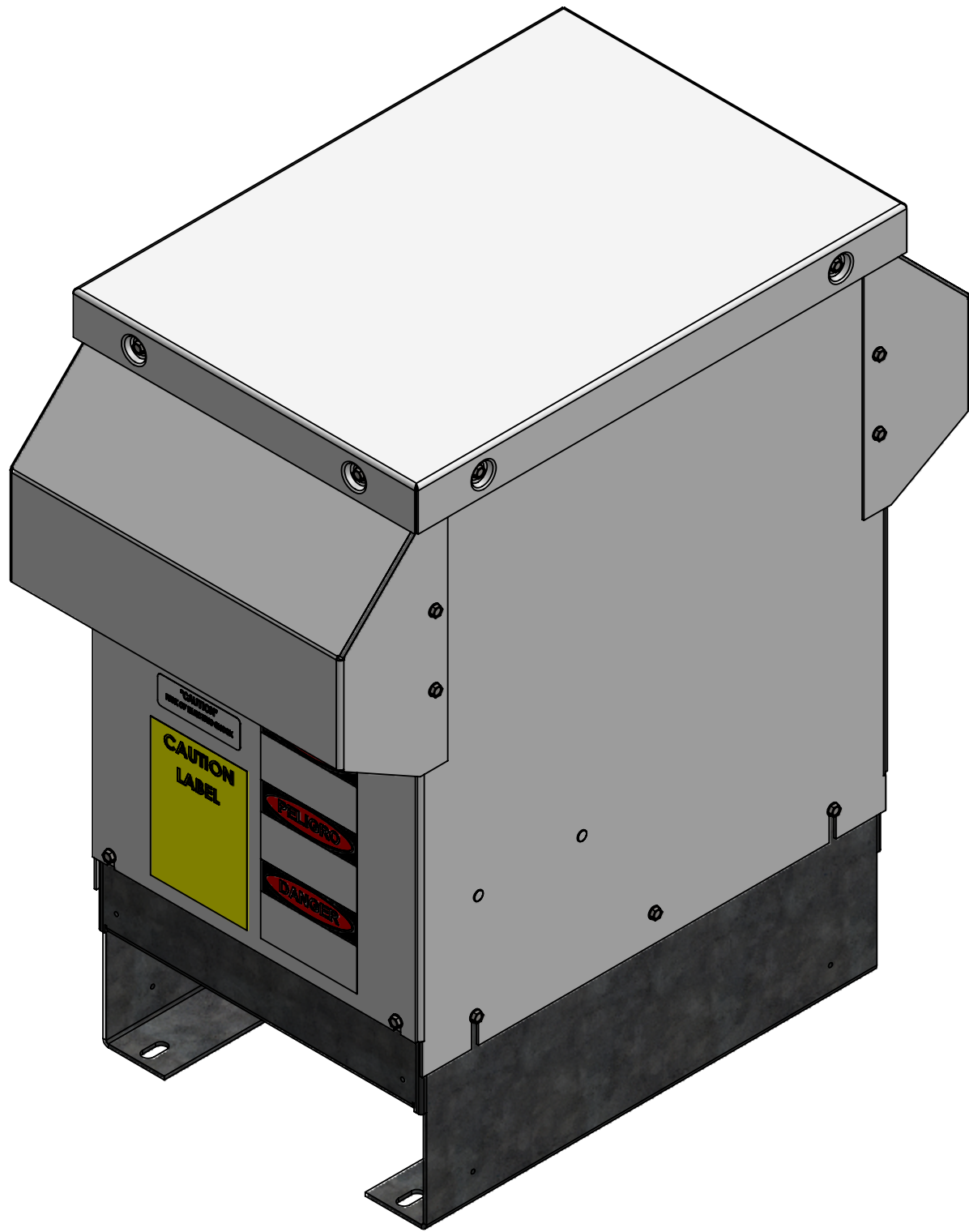
TOP VIEW
(PANELS REMOVED)



DETAIL A
(6 PLACES)



CUSTOMER CONNECTION
DETAIL VIEW



NOTES:

1. TERMINAL WIRE RANGE: 4-14 AWG.
2. TERMINAL SCREW TIGHTENING TORQUE: 16 IN/LBS.
3. REFER TO USER MANUAL FOR COMPLETE INSTALLATION INSTRUCTIONS

THE COMPONENT, PART OR ASSEMBLY DESCRIBED IN THIS DOCUMENT MUST COMPLY WITH THE EU(EUROPEAN UNION) DIRECTIVE RoHS2		MATERIAL		CONFIDENTIAL AND PROPRIETARY INFORMATION THIS DOCUMENT CONTAINS CONFIDENTIAL AND PROPRIETARY INFORMATION OF MTE CORPORATION AND MAY NOT BE USED, COPIED OR DISCLOSED TO OTHERS EXCEPT WITH THE AUTHORIZED WRITTEN PERMISSION OF MTE CORPORATION	
CONTAINS <0.1% OF ANY SVHC BY WEIGHT PER REACH REGULATION				DESCRIPTION	
UNLESS OTHERWISE SPECIFIED DIMENSIONS ARE IN INCHES [MM] TOLERANCES ARE: ANGLES: ± 1 ° 1 PLACE .X: ± .1 [2.5] 2 PLACE .XX: ± .03 [0.76] 3 PLACE .XXX: ± .010 [0.254]		MTE POWER QUALITY. SOLVED. N83 W13330 Leon Road Menomonee Falls, WI 53051 USA 800.455.4683 262.253.8200		SWG 110A 208-240V 2-8kHz FILTER, NEMA 3R ENCL	
		DRAWN JD	DATE 07/18/19	SIZE D	DWG No. CD SWGW0110A
		CHECKED JD	DATE 07/18/19	REV 00	
		APPROVED PY	DATE 11/14/19	SCALE 1:3	SHEET 1 OF 1