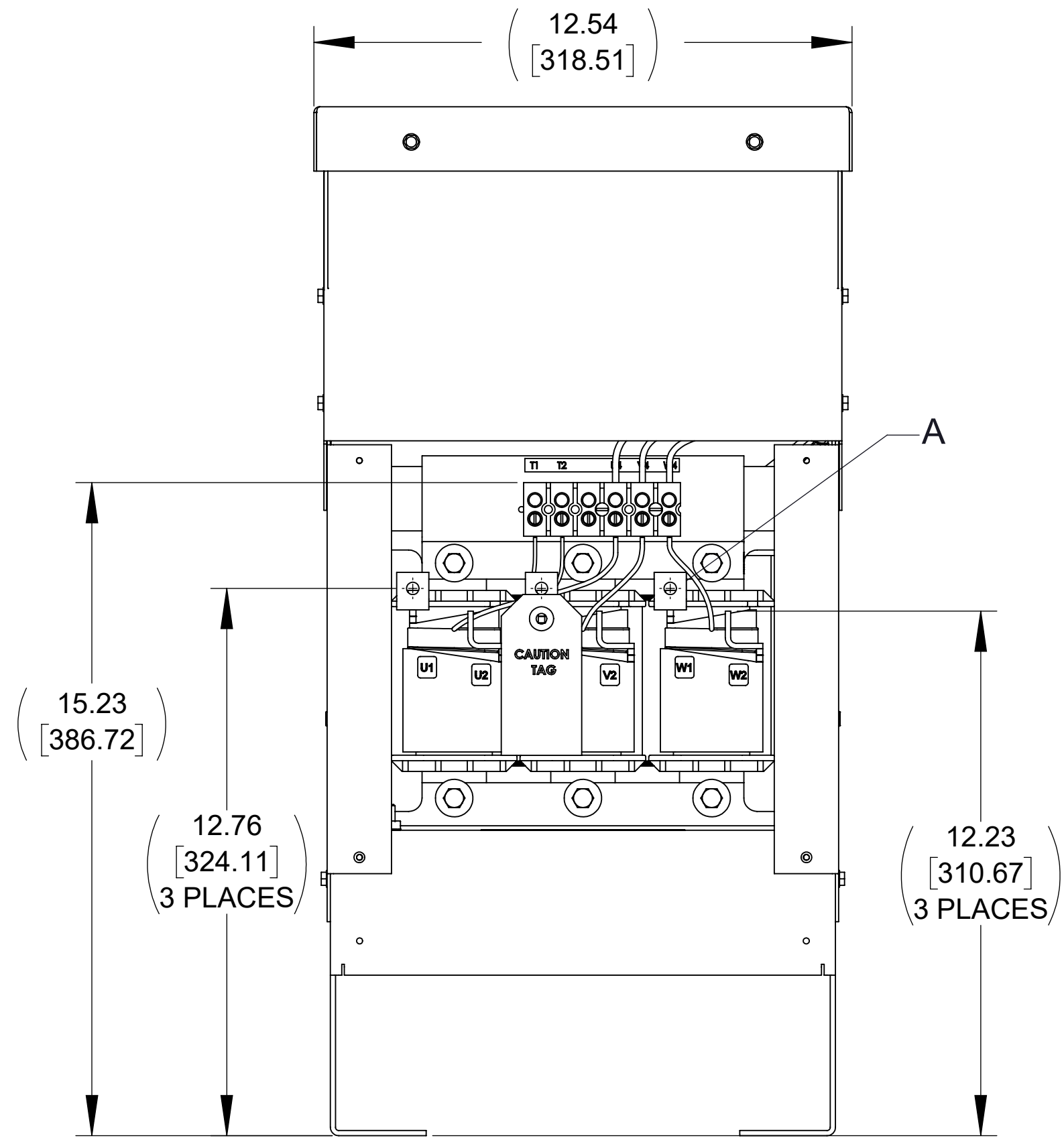
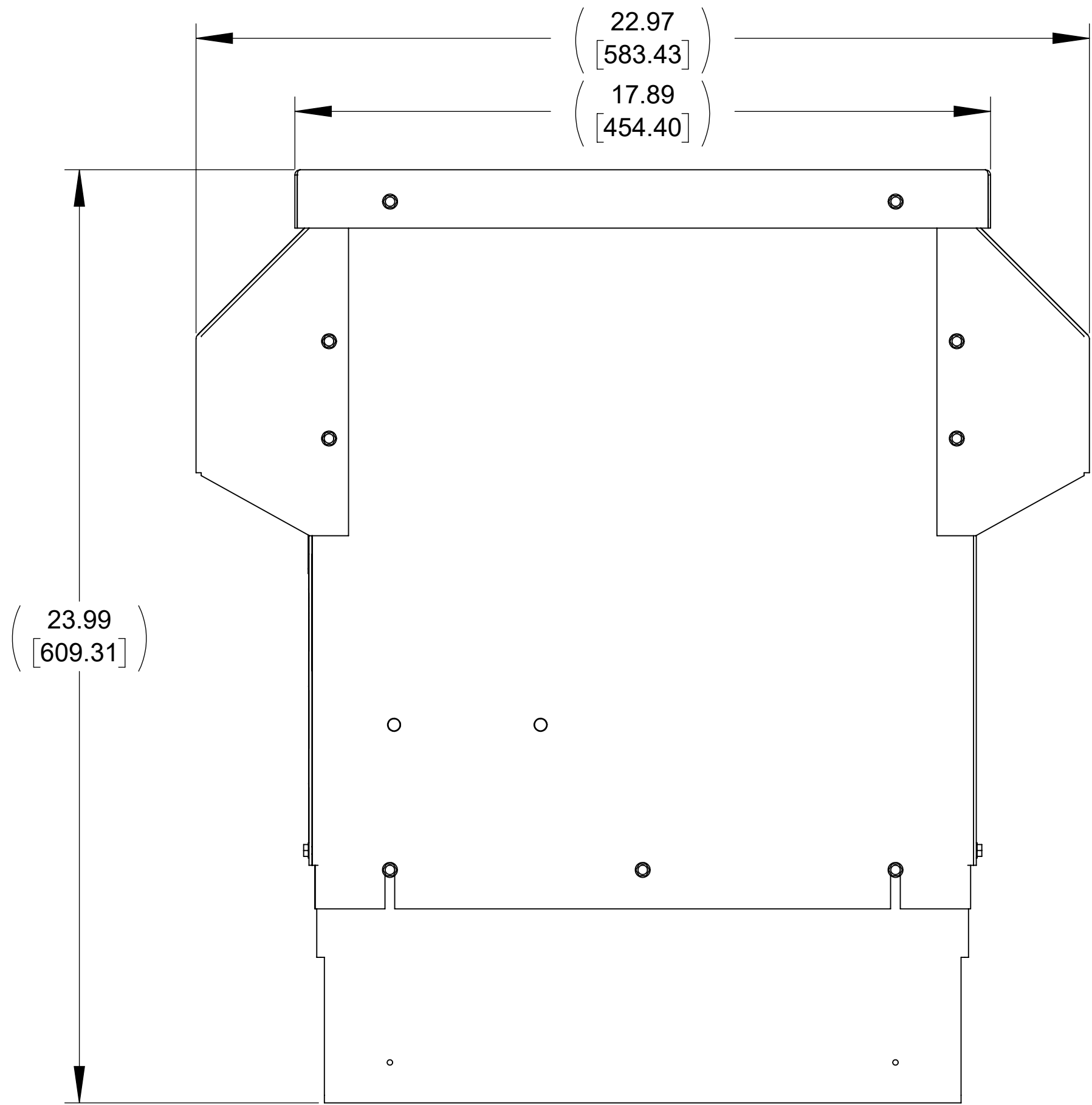


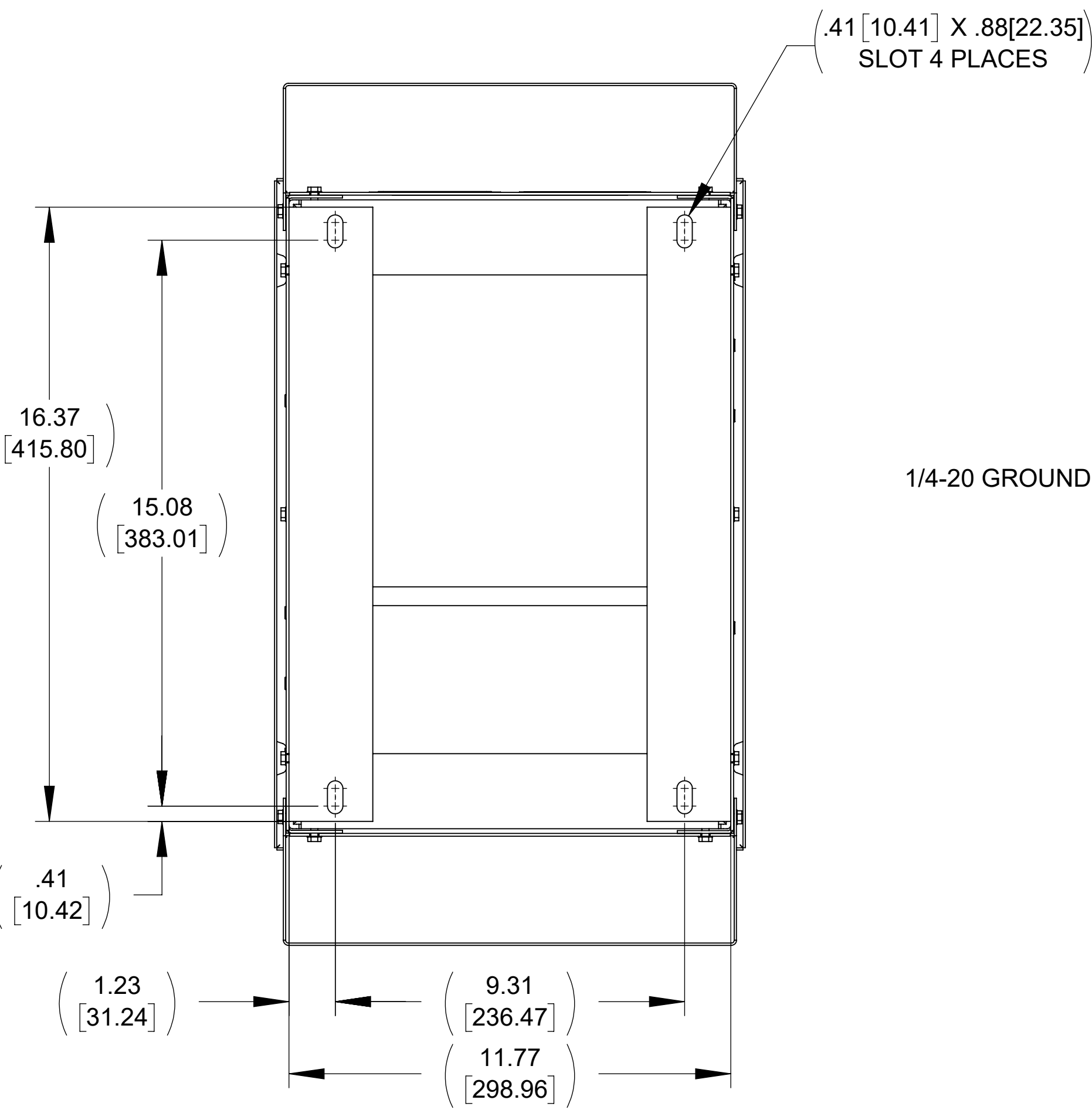
APPROX. WEIGHT
(LBS)
93



FRONT VIEW
(PANELS REMOVED)



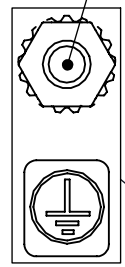
SIDE VIEW



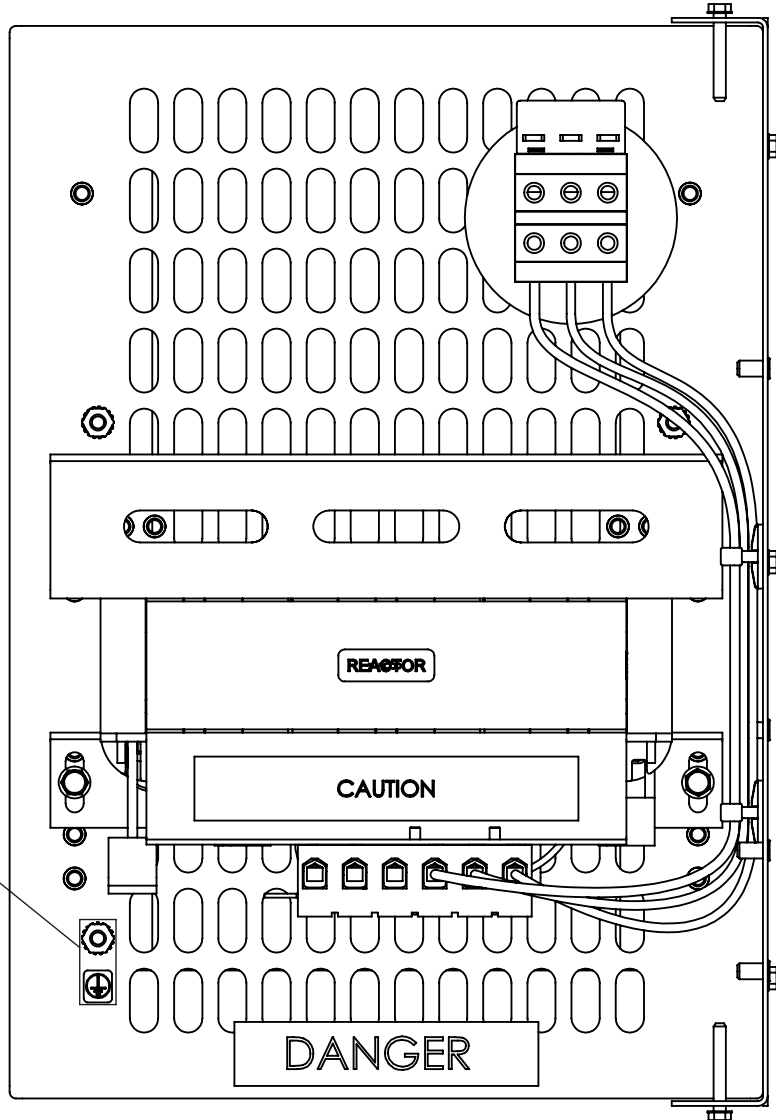
BOTTOM VIEW

(.41 [10.41] X .88 [22.35])
SLOT 4 PLACES

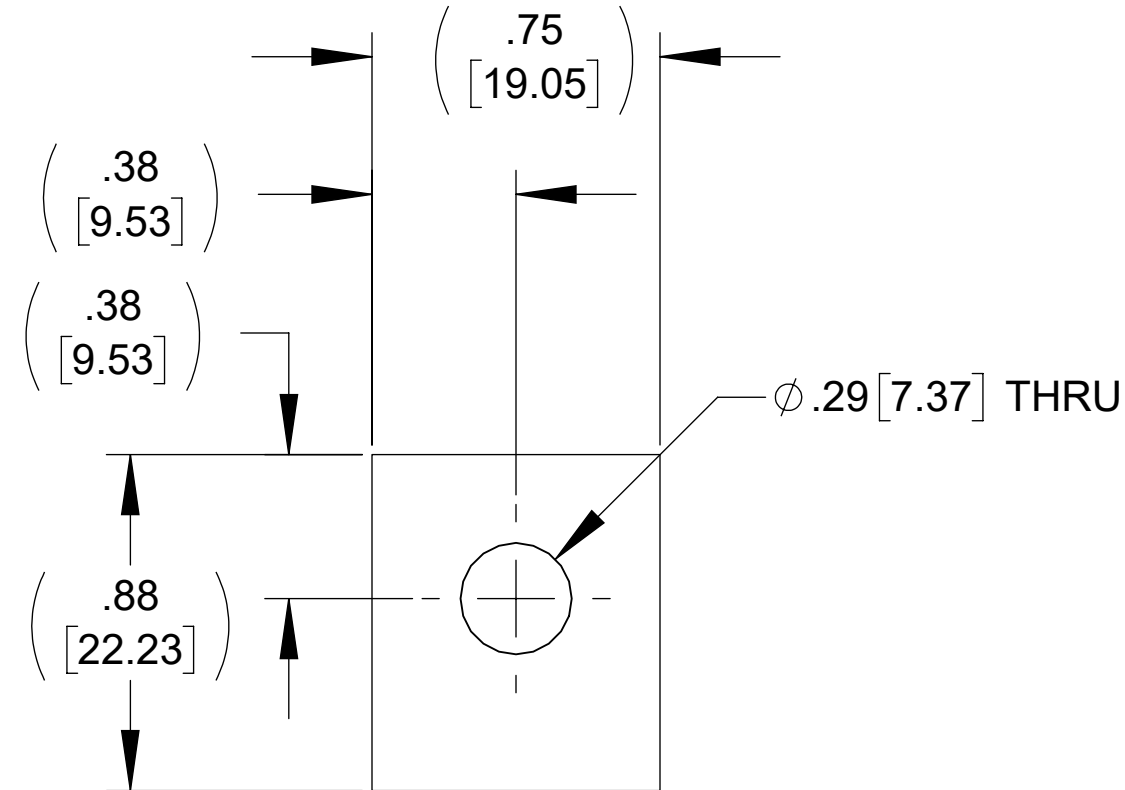
1/4-20 GROUND STUD



DETAIL B



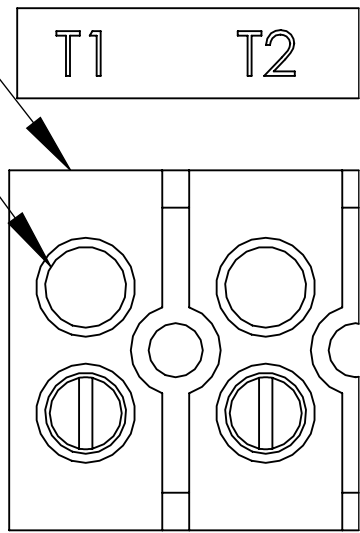
TOP VIEW
(PANELS REMOVED)



DETAIL A
(6 PLACES)

SEE NOTE 1

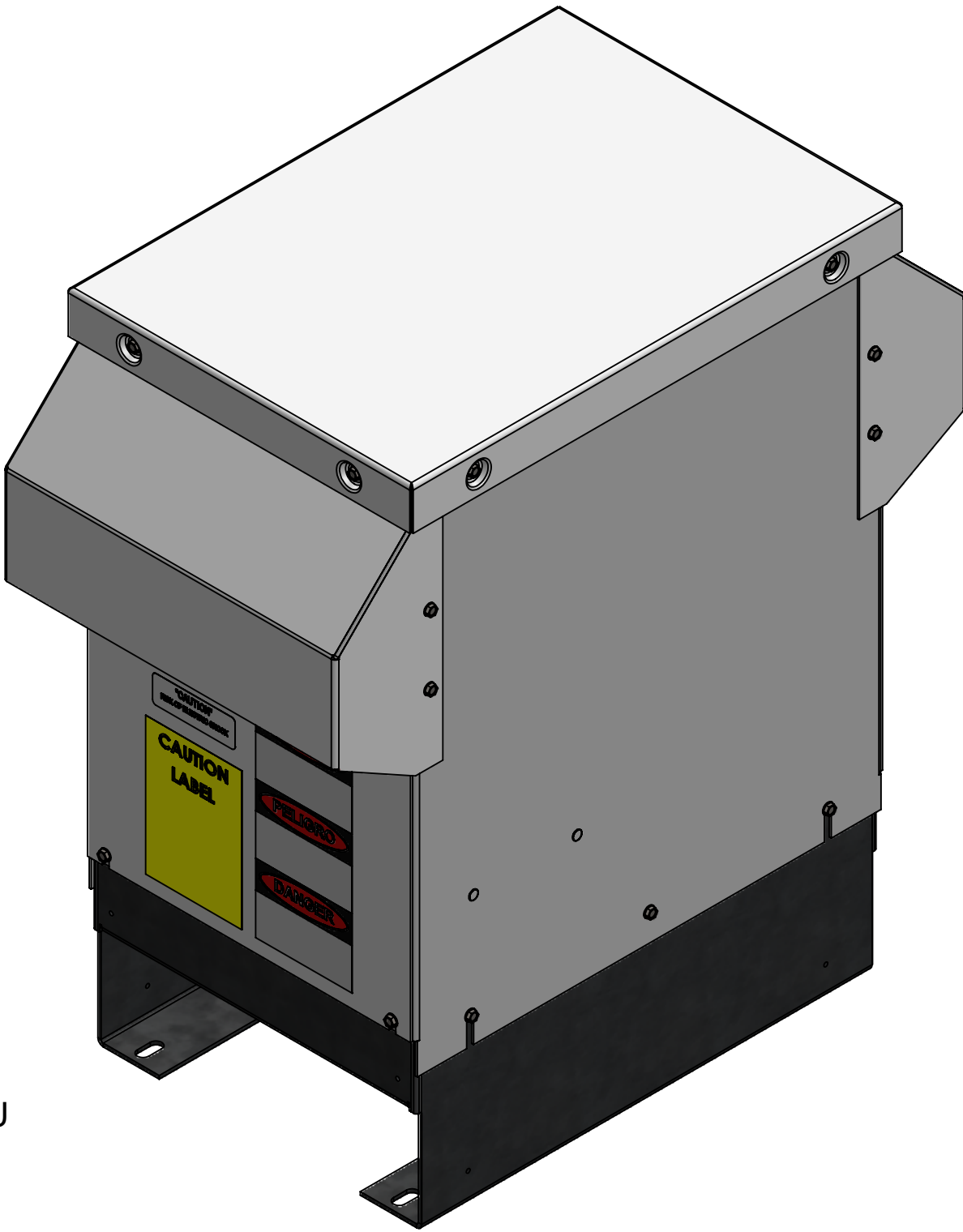
SEE NOTE 2



CUSTOMER CONNECTION
DETAIL VIEW

NOTES:

1. TERMINAL WIRE RANGE: 4-18 AWG.
2. TERMINAL SCREW TIGHTENING TORQUE: 16 IN/LBS.
3. REFER TO USER MANUAL FOR COMPLETE INSTALLATION INSTRUCTIONS



ECO No		DESCRIPTION		REV BY	DATE

THE COMPONENT, PART OR ASSEMBLY DESCRIBED IN THIS DOCUMENT MUST COMPLY WITH THE EU (EUROPEAN UNION) DIRECTIVE RoHS2		MATERIAL		CONFIDENTIAL AND PROPRIETARY INFORMATION THIS DOCUMENT CONTAINS CONFIDENTIAL AND PROPRIETARY INFORMATION OF MTE CORPORATION AND MAY NOT BE USED, COPIED OR DISCLOSED TO OTHERS EXCEPT WITH THE AUTHORIZED WRITTEN PERMISSION OF MTE CORPORATION	
CONTAINS <0.1% OF ANY SVHC BY WEIGHT PER REACH REGULATION				DESCRIPTION	
UNLESS OTHERWISE SPECIFIED DIMENSIONS ARE IN INCHES [MM] TOLERANCES ARE: ANGLES: ± 1 ° 1 PLACE .X: ± .1 [2.5] 2 PLACE .XX: ± .03 [0.76] 3 PLACE .XXX: ± .010 [0.254]		MTE POWER QUALITY. SOLVED. N83 W13330 Leon Road Menomonee Falls, WI 53051 USA 800.455-4683 262.253.8200		SWG 85A 208-240V 2-8kHz FILTER, NEMA 3R ENCL	
		DRAWN JD	DATE 07/12/19	SIZE D	DWG No. CD SWGW0085A
		CHECKED CH	DATE 11/11/19	REV 00	
		APPROVED PY	DATE 12/04/19	SCALE 1:3	SHEET 1 OF 1