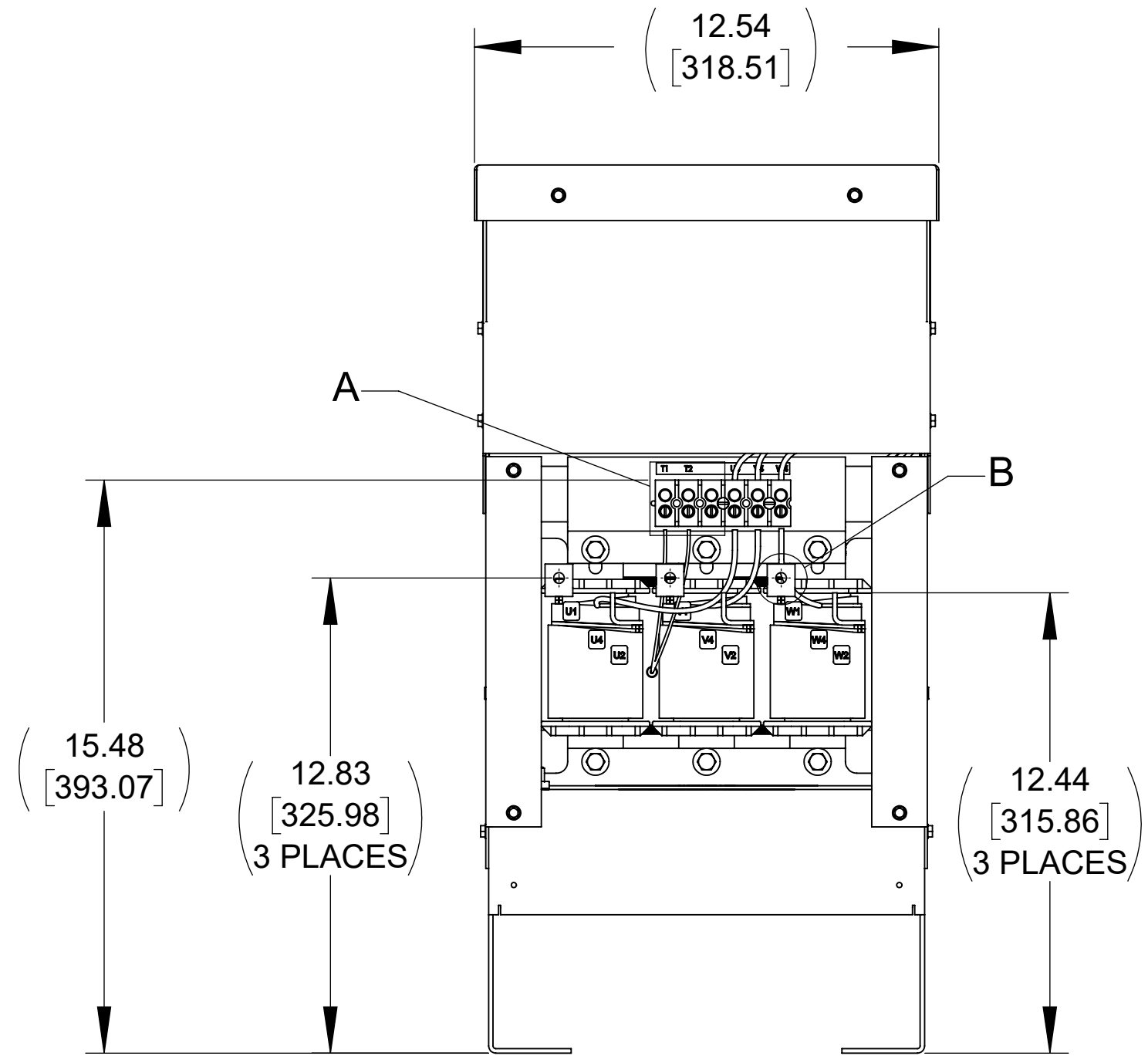
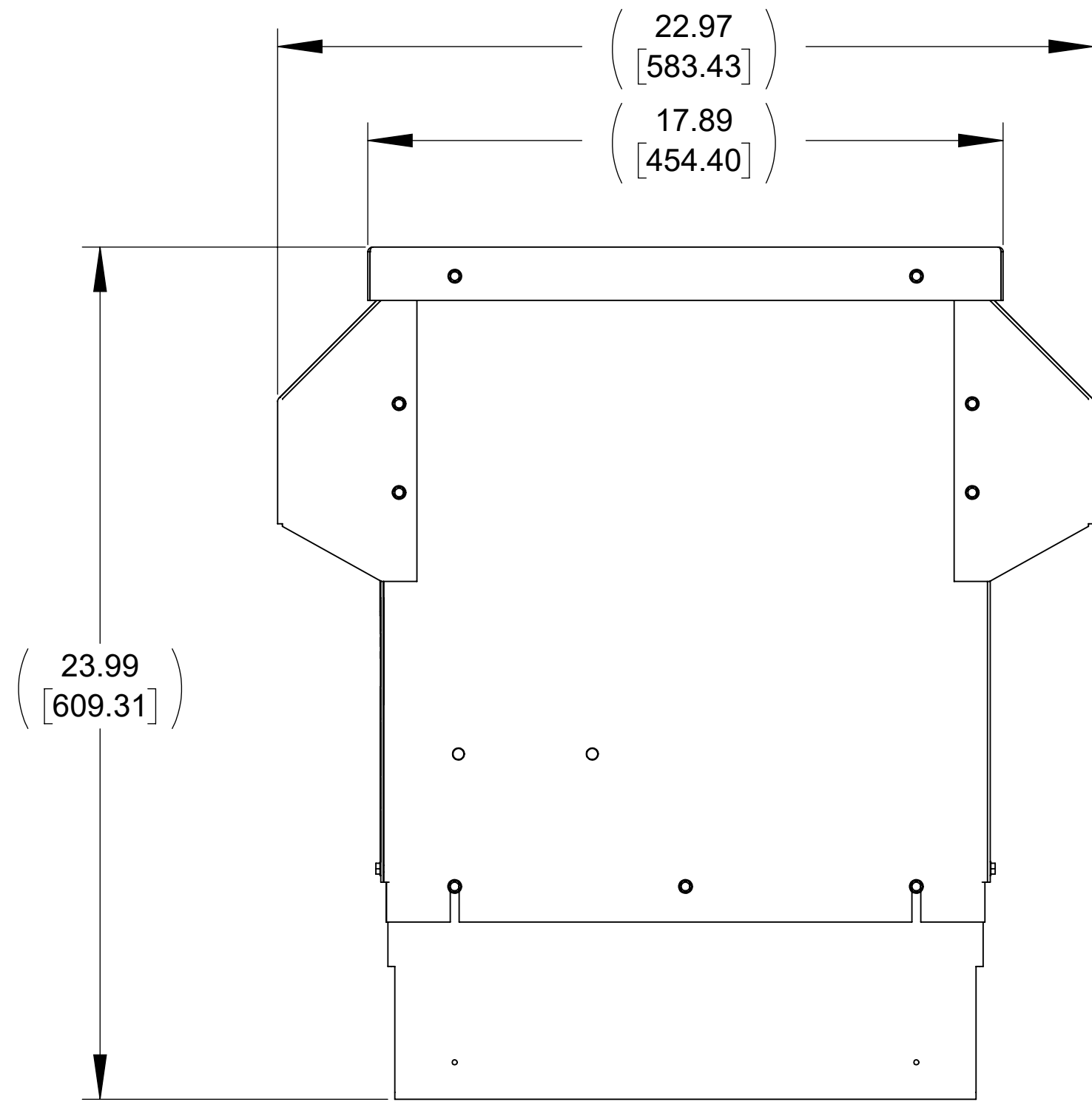


<b>APPROX. WEIGHT (LBS)</b>
89

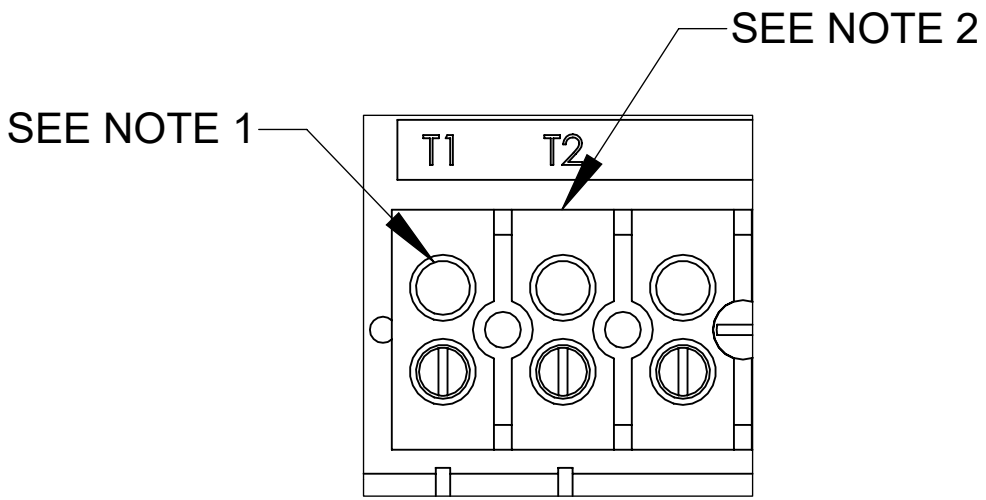
ECO No	DESCRIPTION	REV BY	DATE



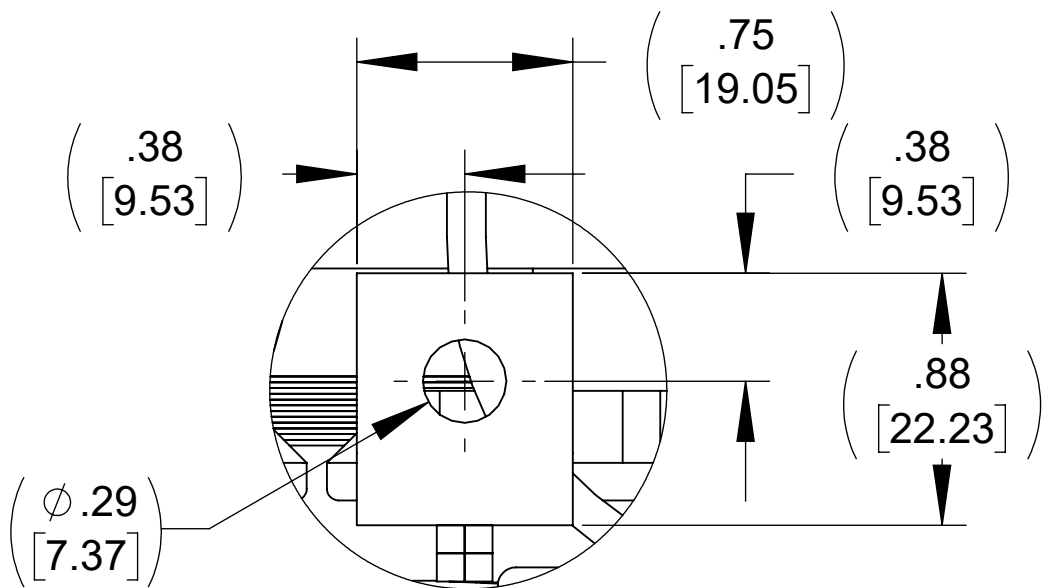
**FRONT VIEW  
(PANELS REMOVED)**



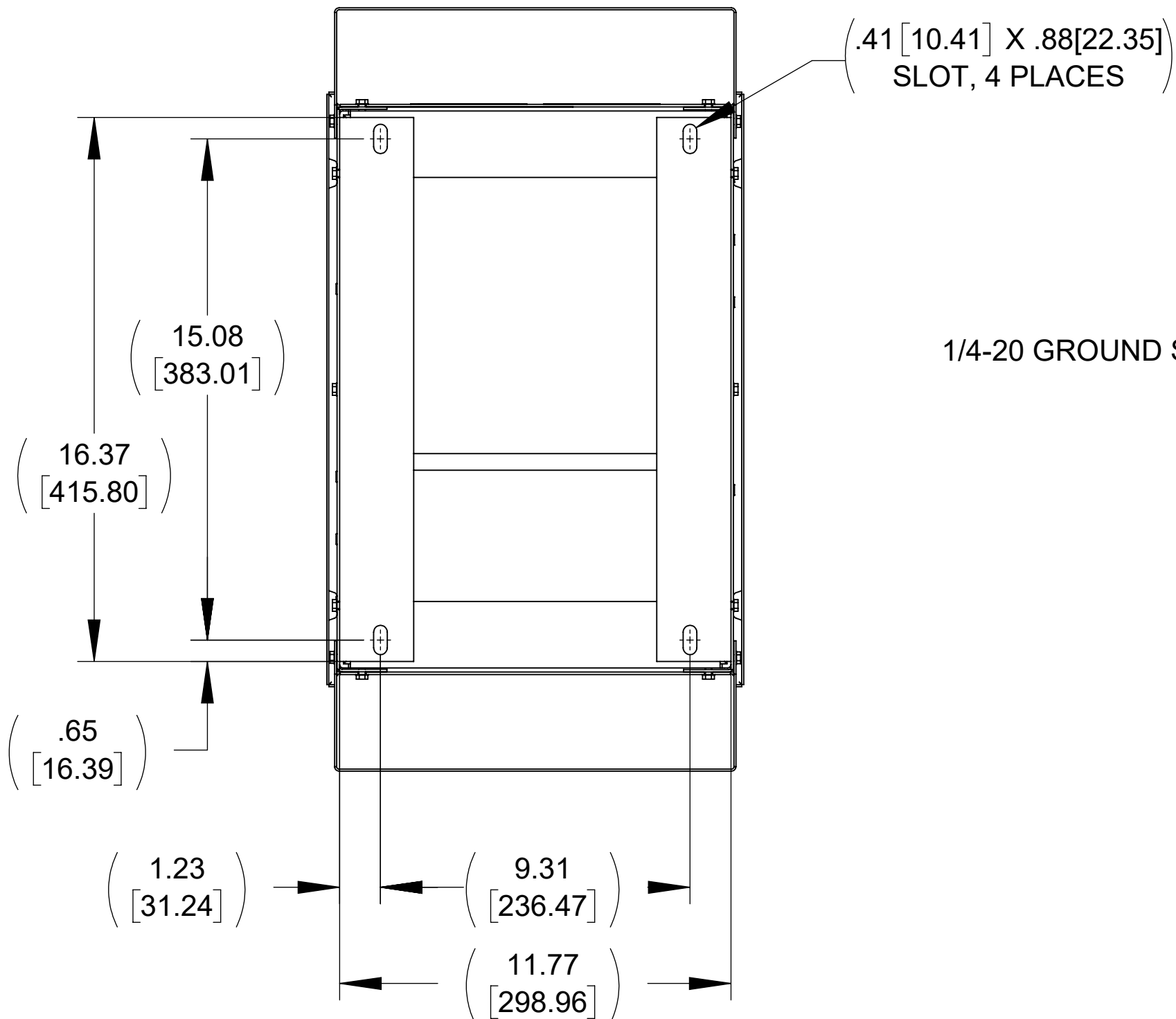
## SIDE VIEW



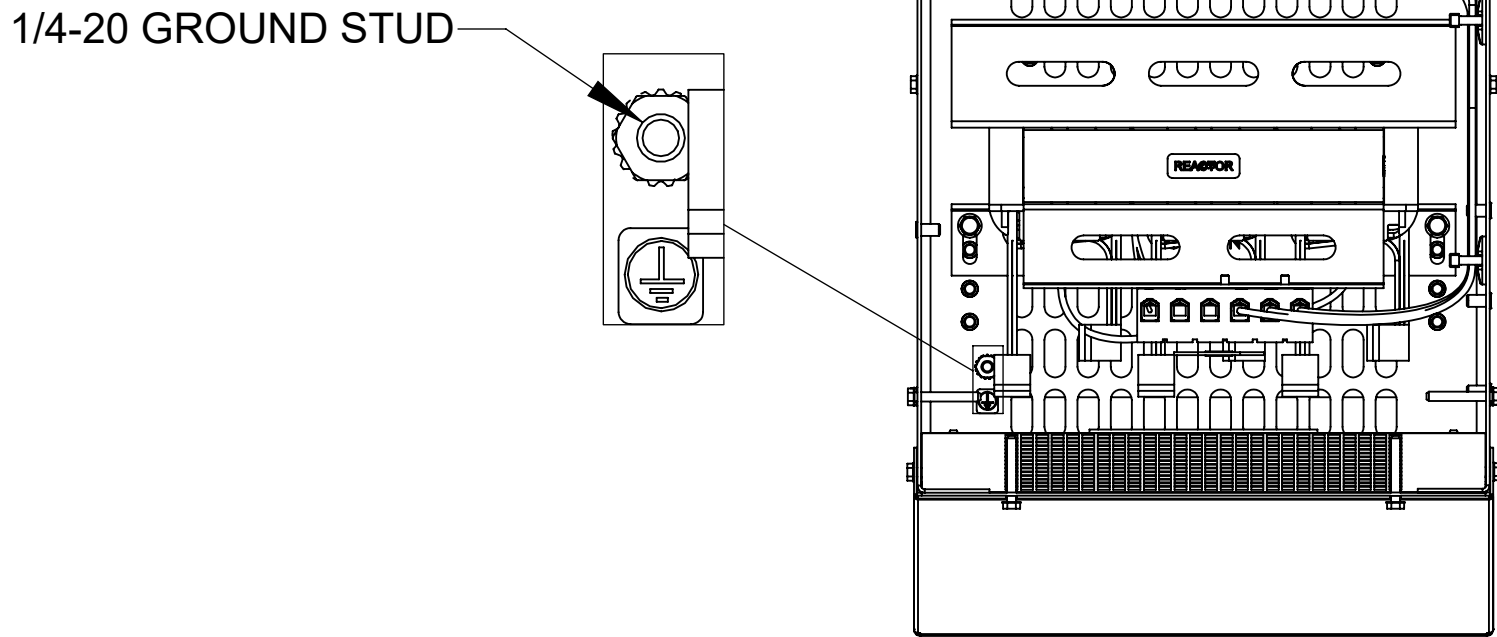
**DETAIL A**  
**CUSTOMER CONNECTION**  
**DETAIL VIEW (THERMAL)**



**DETAIL B  
CUSTOMER CONNECTION  
DETAIL VIEW  
(6 PLACES)**




## BOTTOM VIEW



**TOP VIEW  
(PANELS REMOVED)**

- NOTES:**
1. **TERMINAL WIRE SIZE: 4-14 AWG.**
  2. **TIGHTEN TERMINAL BLOCK SCREWS TO 16 IN/LBS. TORQUE.**
  3. **REFER TO USER MANUAL FOR COMPLETE INSTALLATION INSTRUCTIONS.**

THE COMPONENT, PART OR ASSEMBLY DESCRIBED IN THIS DOCUMENT MUST COMPLY WITH THE EU(EUROPEAN UNION) DIRECTIVE RoHS2		<b>MATERIAL</b>		<b>CONFIDENTIAL AND PROPRIETARY INFORMATION</b> THIS DOCUMENT CONTAINS CONFIDENTIAL AND PROPRIETARY INFORMATION OF MTE CORPORATION AND MAY NOT BE USED, COPIED OR DISCLOSED TO OTHERS EXCEPT WITH THE AUTHORIZED WRITTEN PERMISSION OF MTE CORPORATION			
CONTAINS <0.1% OF ANY SVHC BY WEIGHT PER REACH REGULATION				<b>DESCRIPTION</b>			
UNLESS OTHERWISE SPECIFIED DIMENSIONS ARE IN INCHES [MM] TOLERANCES ARE:  ANGLES: $\pm 1^\circ$  1 PLACE .X: $\pm .1$ [2.5]  2 PLACE .XX: $\pm .03$ [0.76]  3 PLACE .XXX: $\pm .010$ [0.254]				DRAWN KV 07/10/19		SWG 70A 208-240V 2-8kHz FILTER, NEMA 3R ENCL	
		N83 W13330 Leon Road Menomonee Falls, WI 53051 USA 800.455-6683 262.253.8200		CHECKED CH 11/11/19			
				APPROVED PY 12/04/19		SIZE D DWG No. CD SWGW0070A REV 00	
				SCALE 1:4		SHEET 1 OF 1	