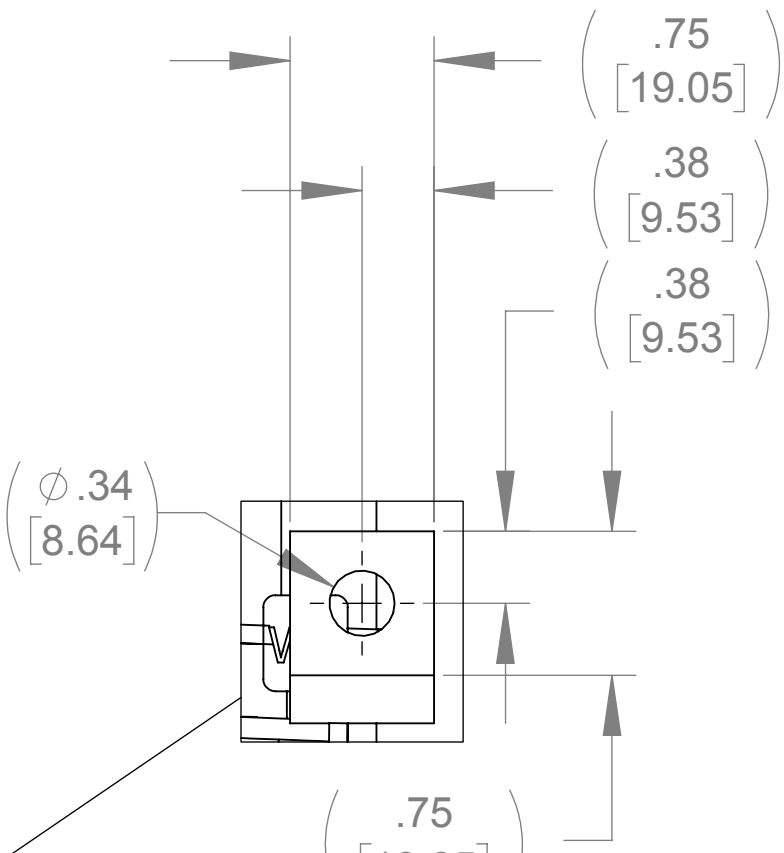
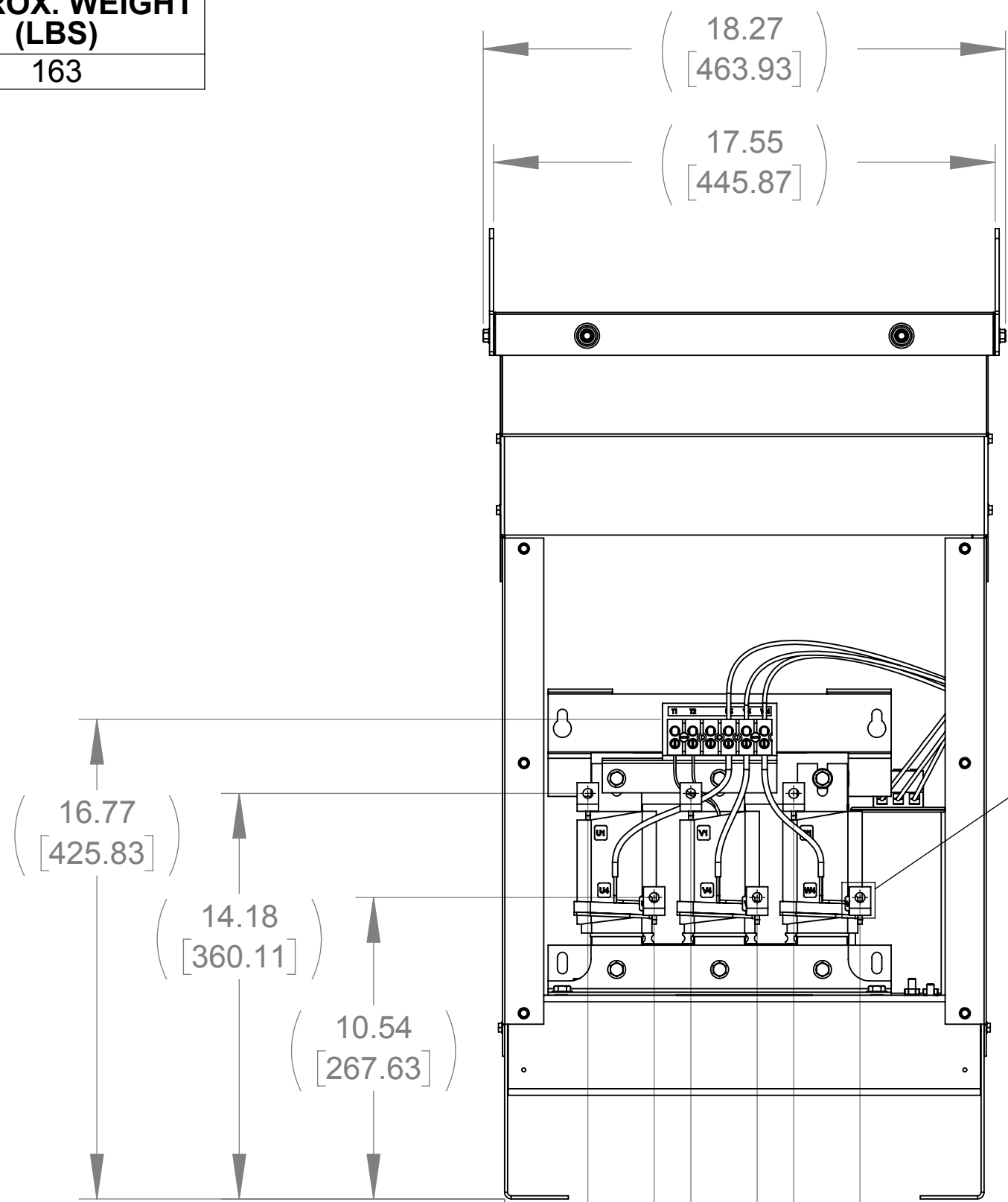
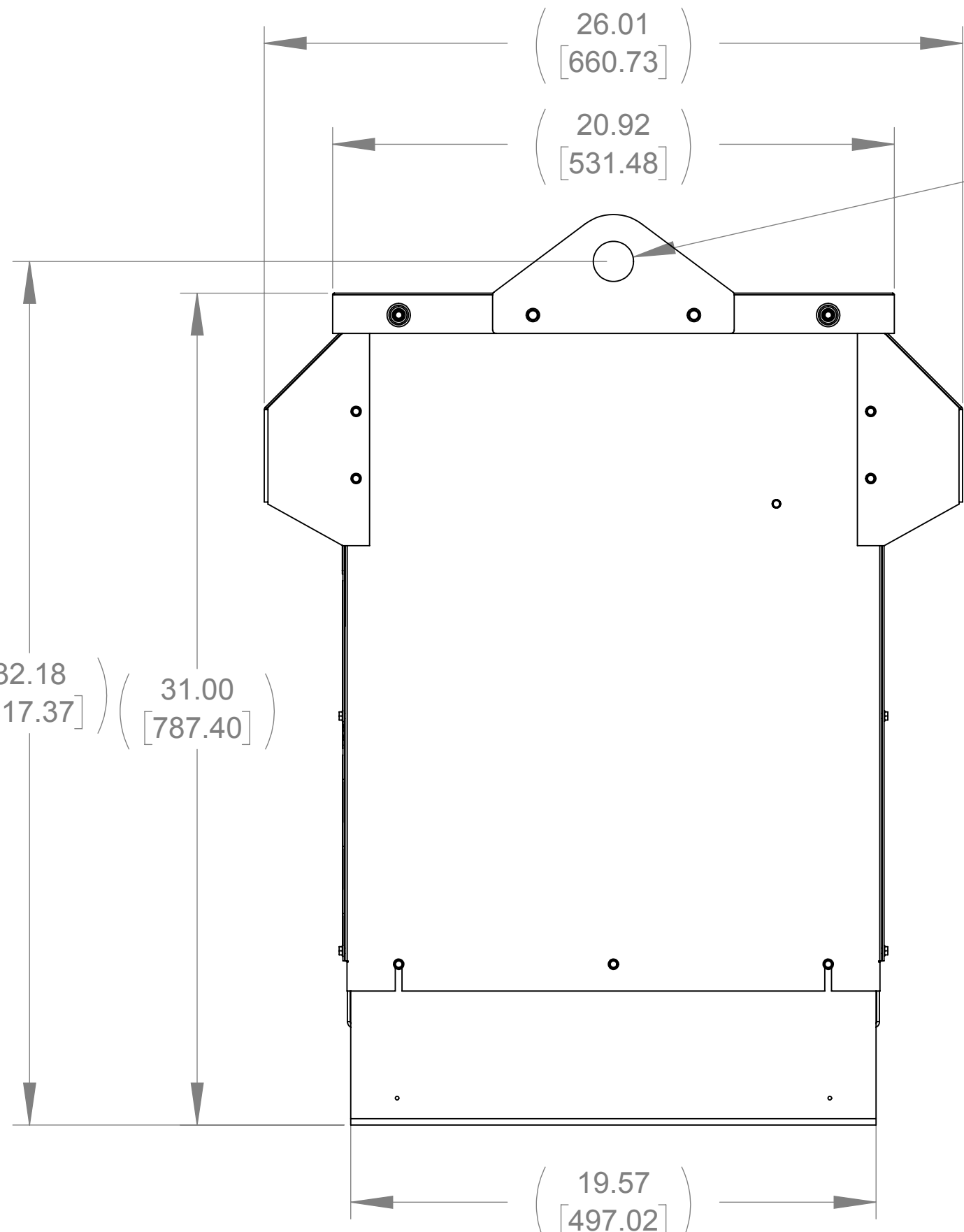


APPROX. WEIGHT
(LBS)
163

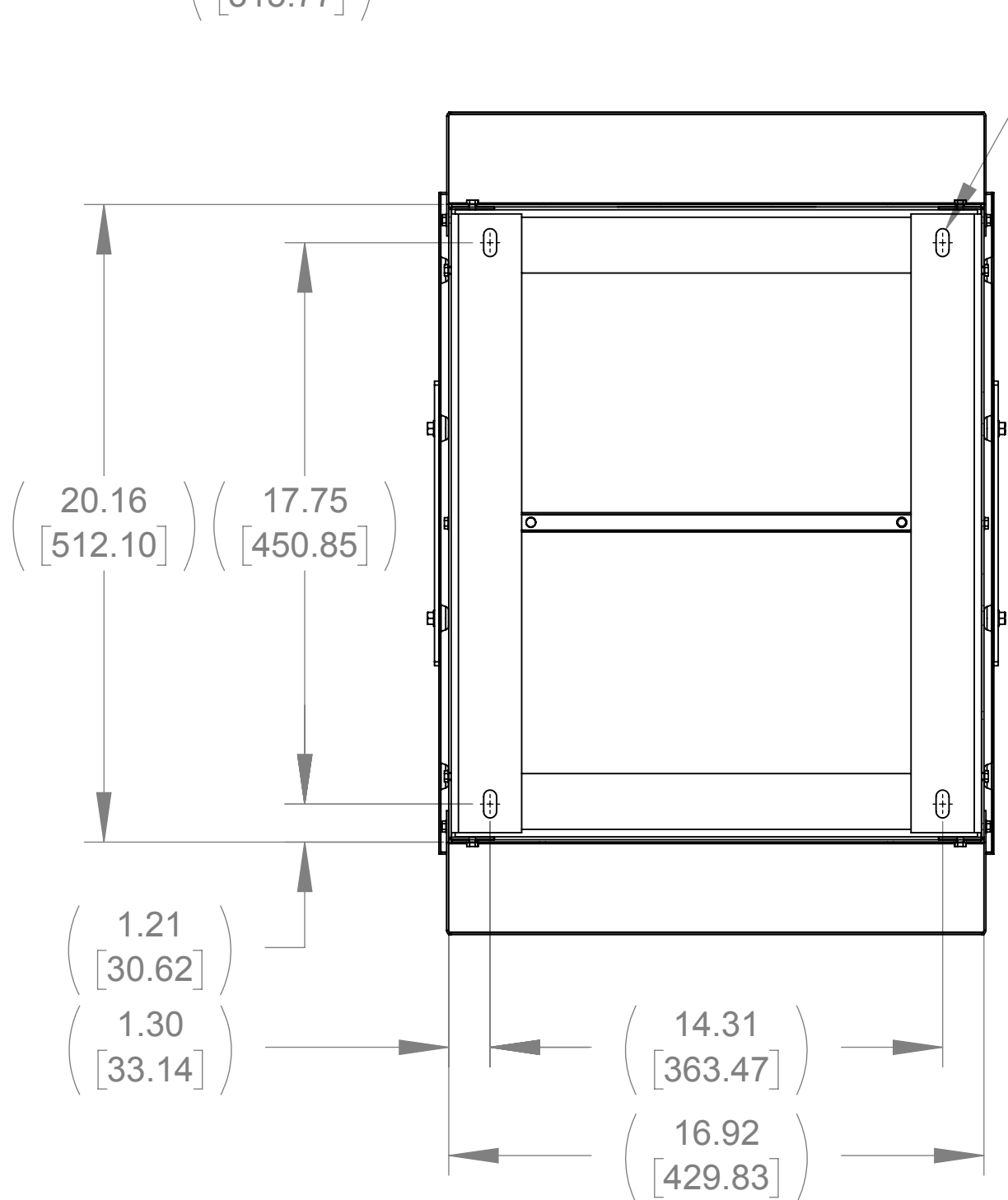
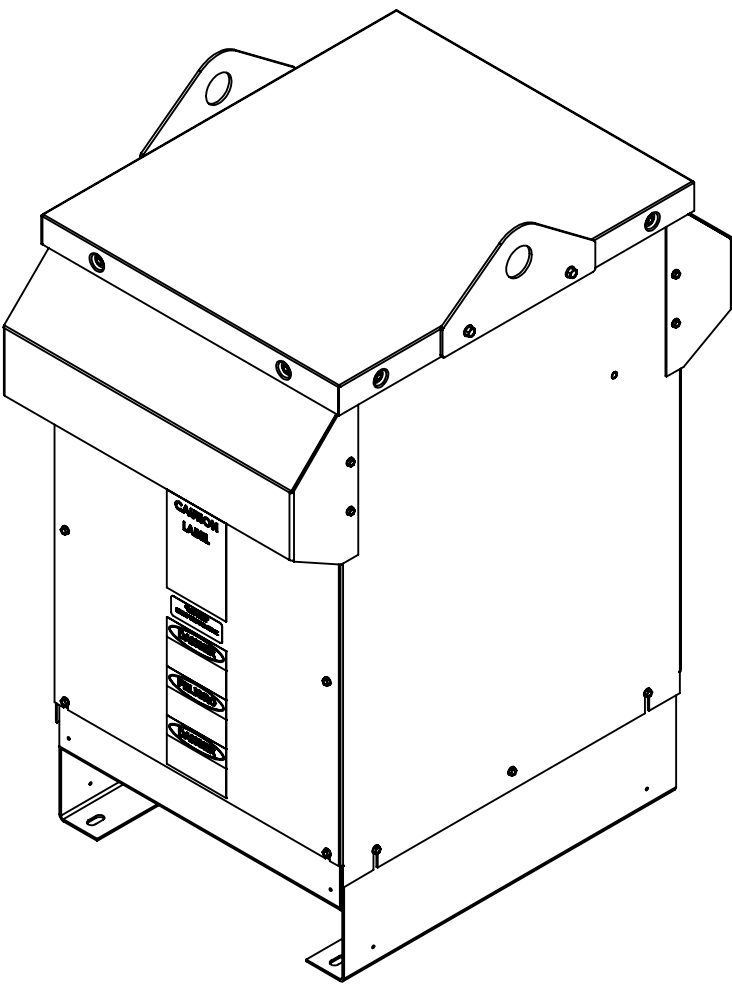
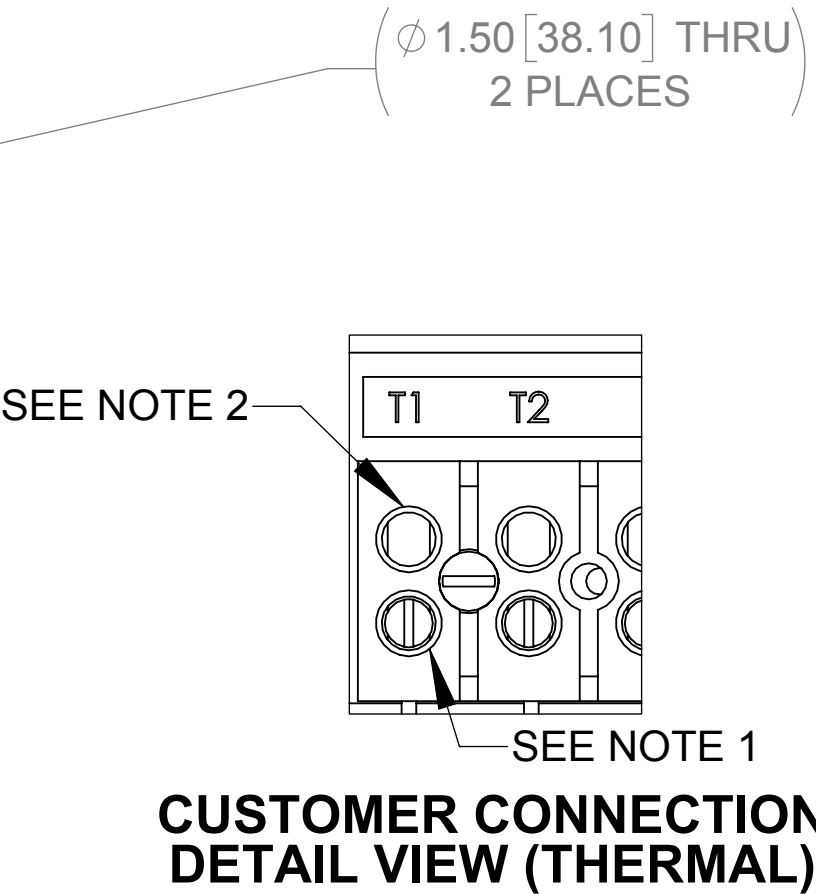
ECO No	DESCRIPTION	REV BY	DATE



FRONT VIEW
(FRONT PANEL REMOVED)

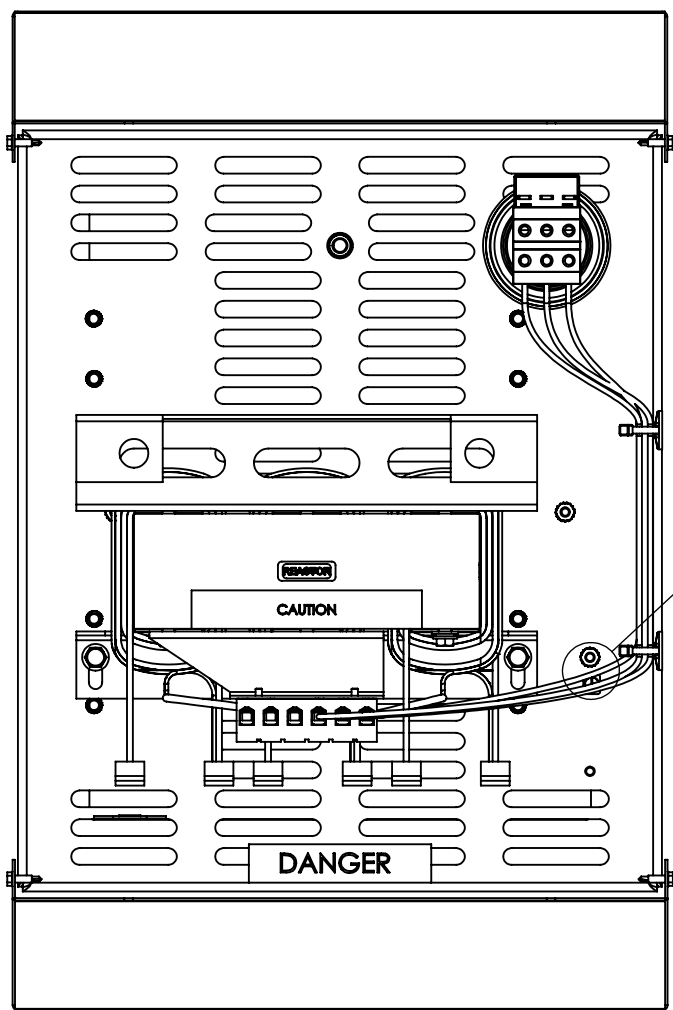


RIGHT SIDE VIEW

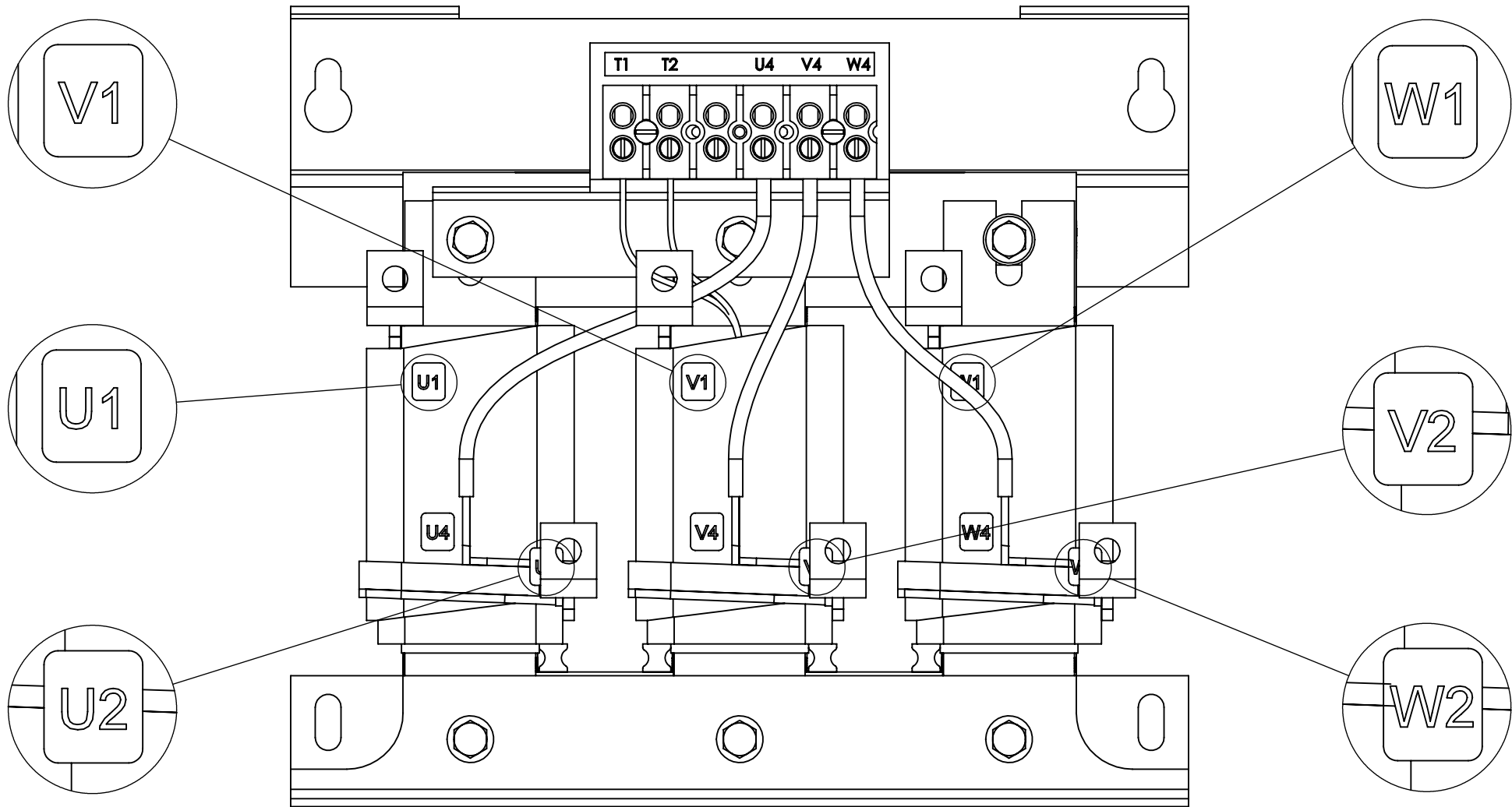
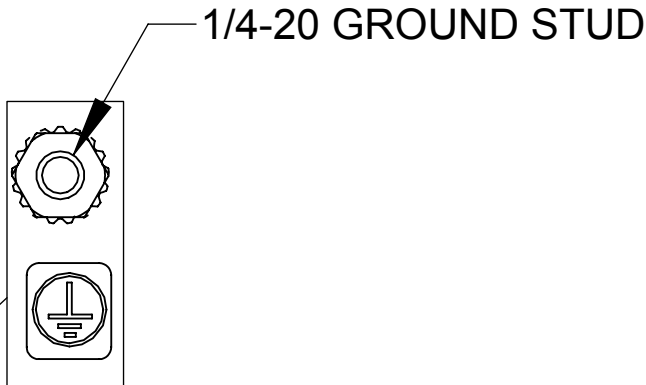


BOTTOM VIEW

(.41 [10.41] X .88 [22.35])
SLOT, 4 PLACES




TOP VIEW
(TOP HAT REMOVED)



CUSTOMER CONNECTION
DETAIL VIEW

- NOTES:
1. TIGHTEN TERMINAL BLOCK SCREWS TO 16 IN/LBS. TORQUE, MAX.
 2. TERMINAL WIRE SIZE: 4-14 AWG.

THE COMPONENT, PART OR ASSEMBLY DESCRIBED IN THIS DOCUMENT MUST COMPLY WITH THE EU(EUROPEAN UNION) DIRECTIVE RoHS2		MATERIAL		CONFIDENTIAL AND PROPRIETARY INFORMATION THIS DOCUMENT CONTAINS CONFIDENTIAL AND PROPRIETARY INFORMATION OF MTE CORPORATION AND MAY NOT BE USED, COPIED OR DISCLOSED TO OTHERS EXCEPT WITH THE AUTHORIZED WRITTEN PERMISSION OF MTE CORPORATION			
CONTAINS <0.1% OF ANY SVHC BY WEIGHT PER REACH REGULATION				DESCRIPTION			
UNLESS OTHERWISE SPECIFIED DIMENSIONS ARE IN INCHES [MM] TOLERANCES ARE: ANGLES: ± 1 ° 1 PLACE .X: ± .1 [2.5] 2 PLACE .XX: ± .03 [0.76] 3 PLACE .XXX: ± .010 [0.254]	 <div>N83 W13330 Leon Road Menomonee Falls, WI 53051 USA 800.455.4683 262.253.8200</div>	DRAWN	DATE	SWG 65A 600V 2-8kHz FILTER, NEMA 3R ENCL			
		WF	08/15/18				
		CHECKED	DATE				
		WF	08/23/18				
		APPROVED	DATE	SIZE	DWG No.	REV	
		TL	10/10/18	D	CD SWGW0065E	00	
				SCALE	1:4	SHEET 1 OF 1	