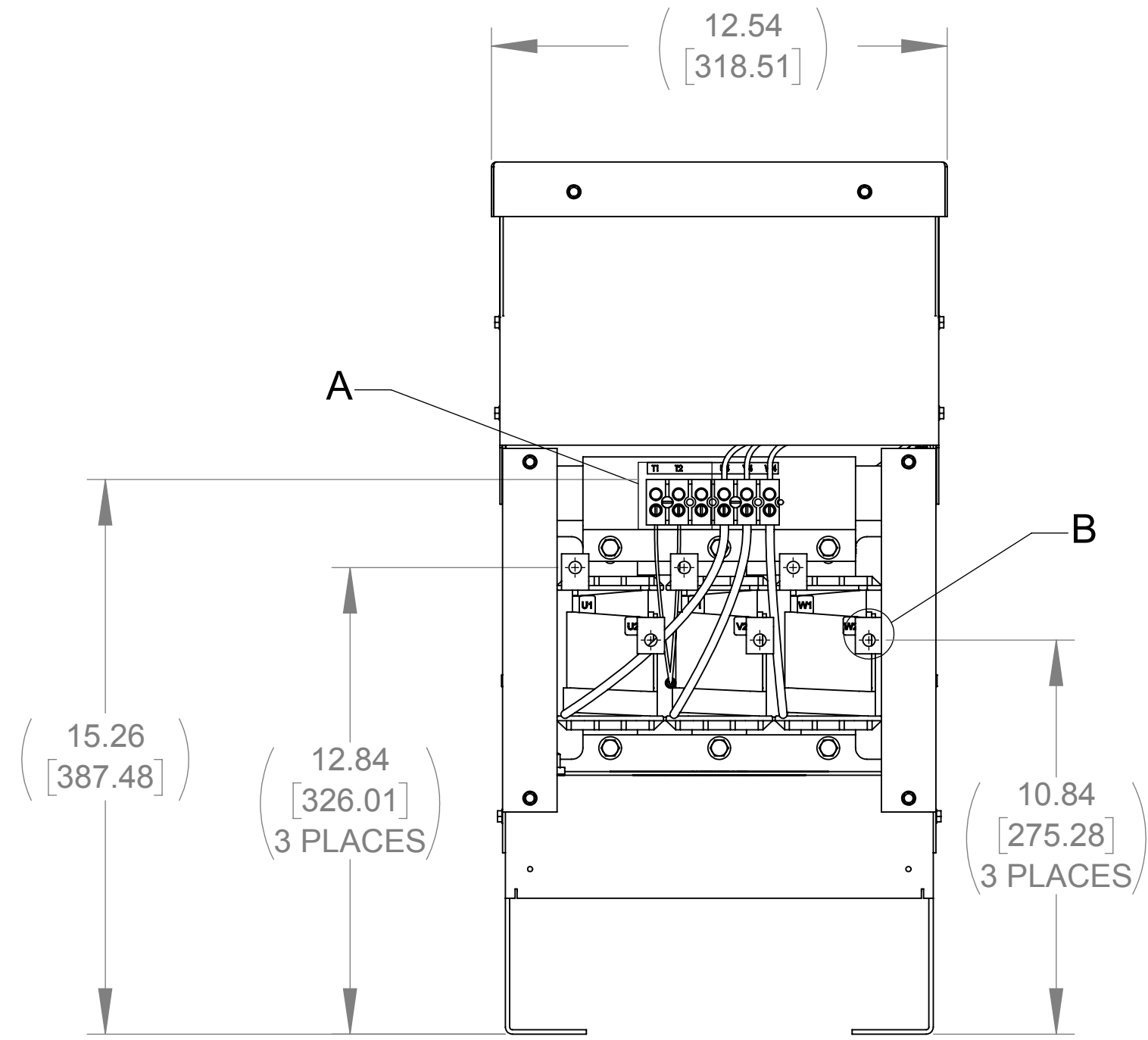
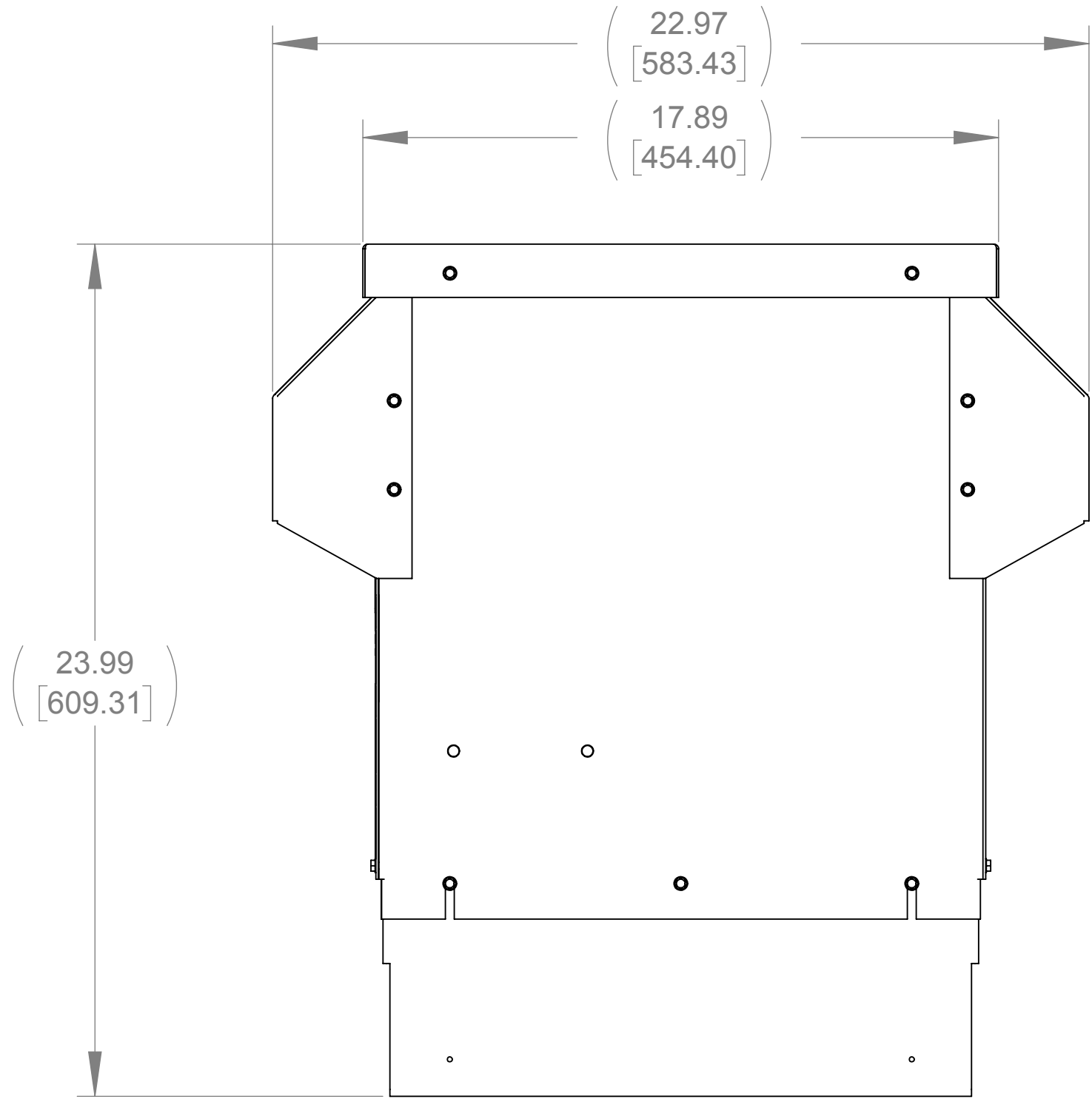


APPROX. WEIGHT (LBS)
109

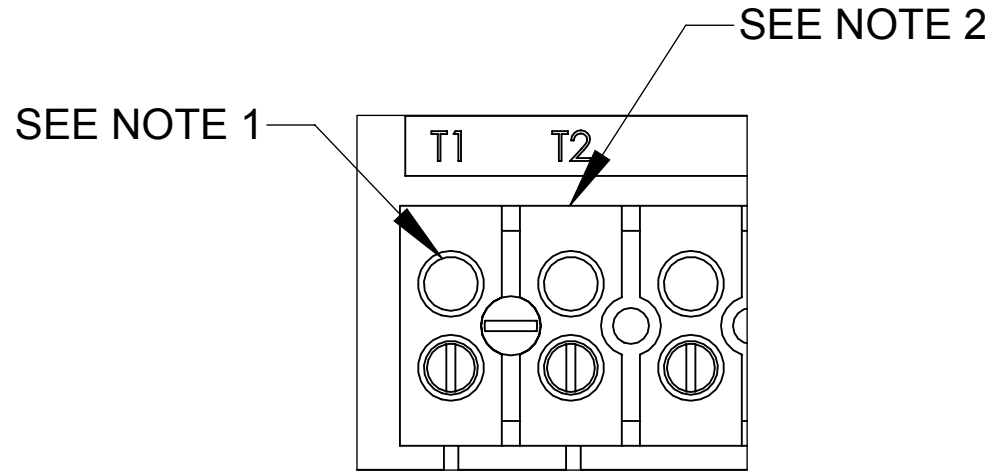
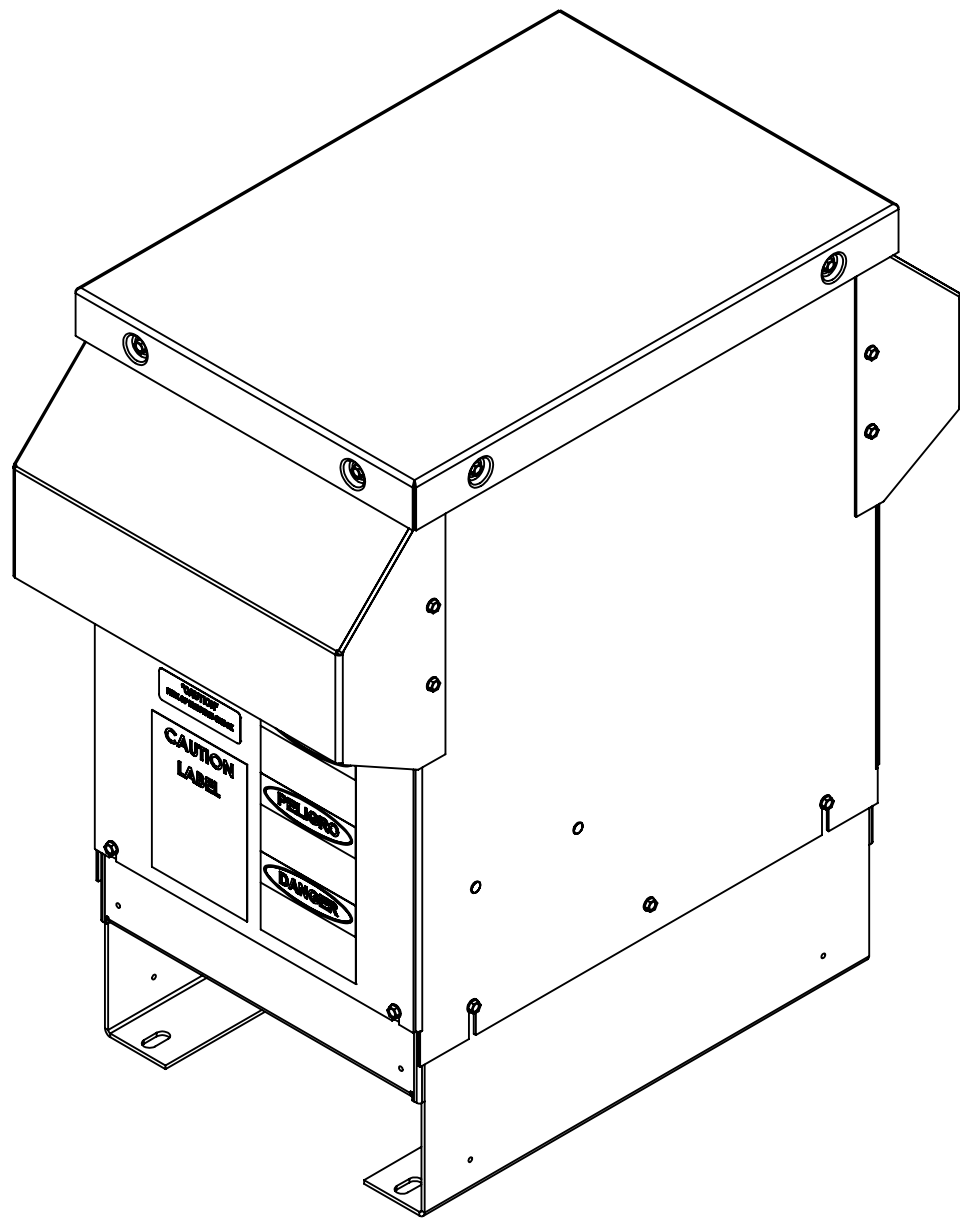
ECO No	DESCRIPTION	REV BY	DATE



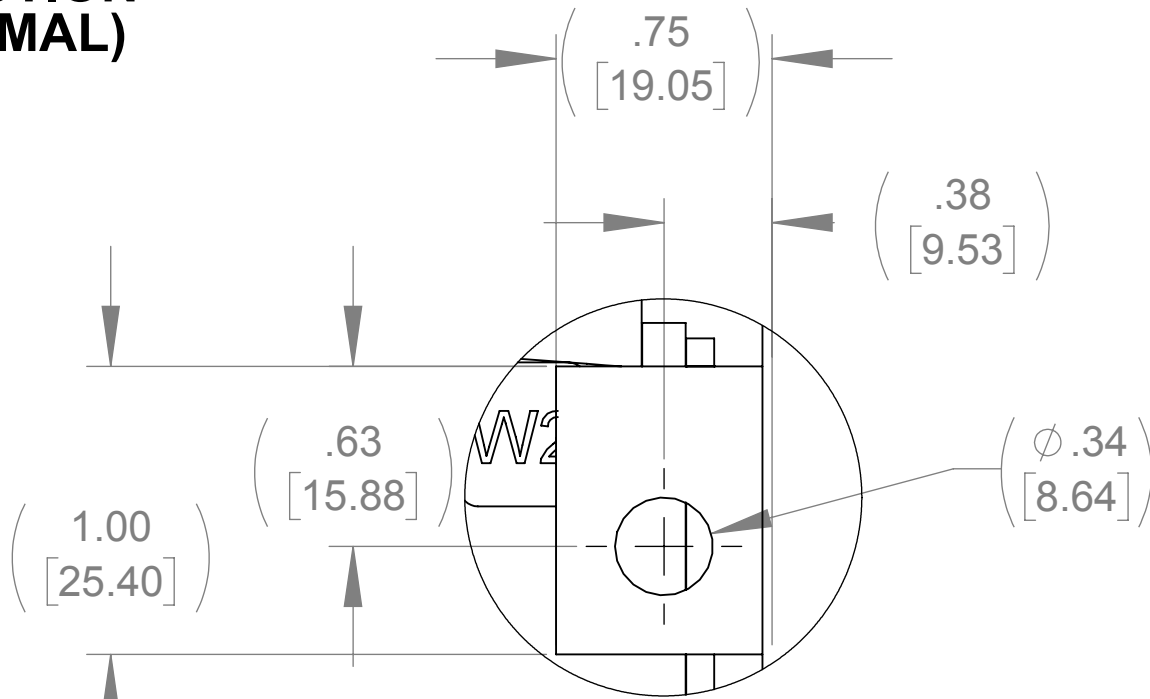
FRONT VIEW
(PANELS REMOVED)



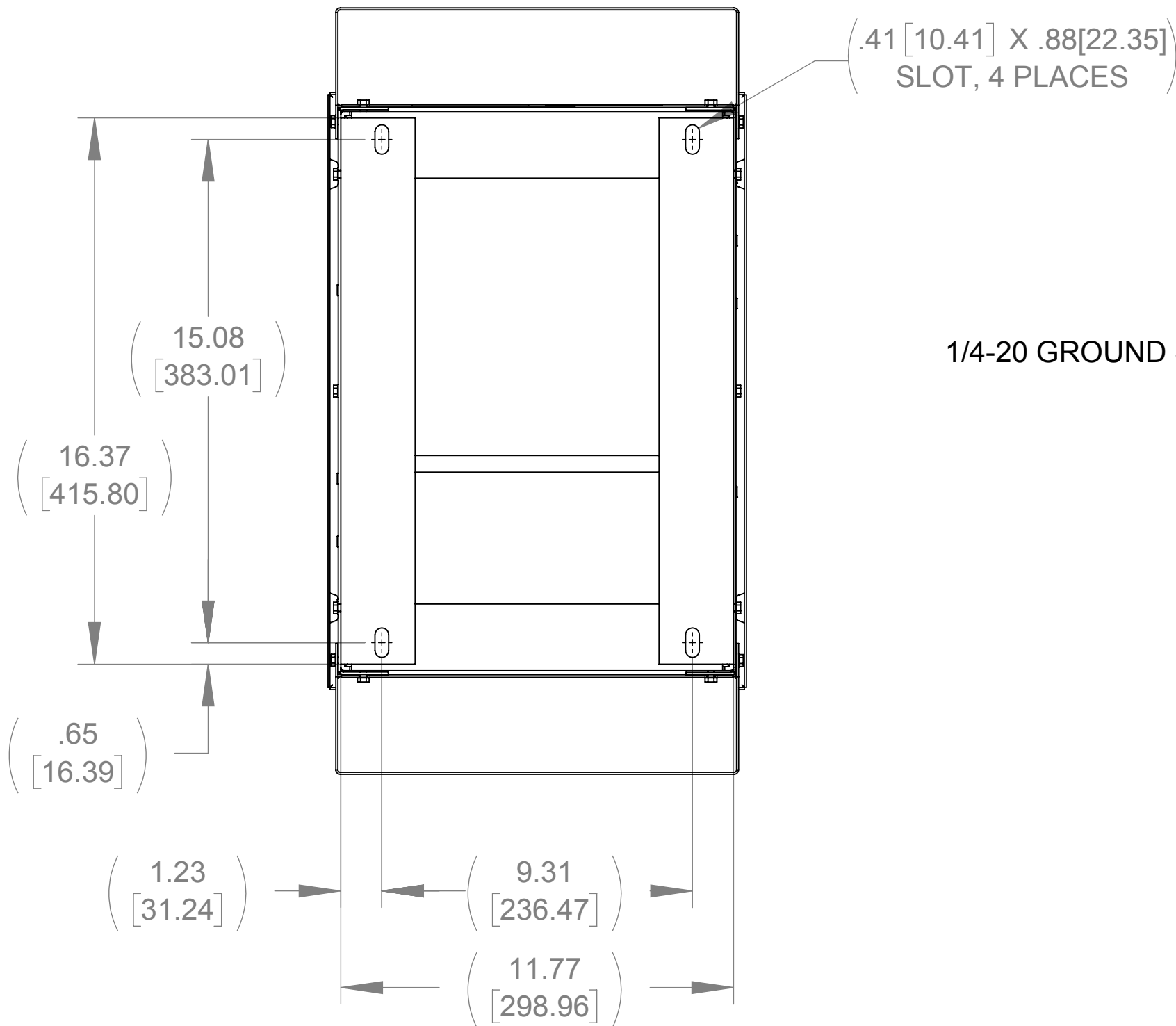
SIDE VIEW



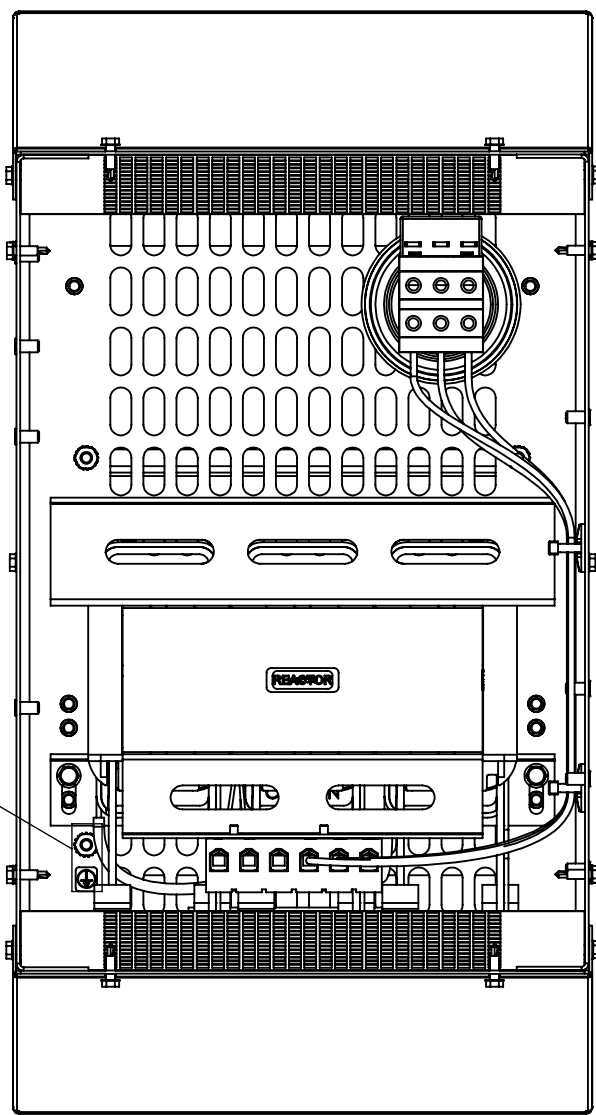
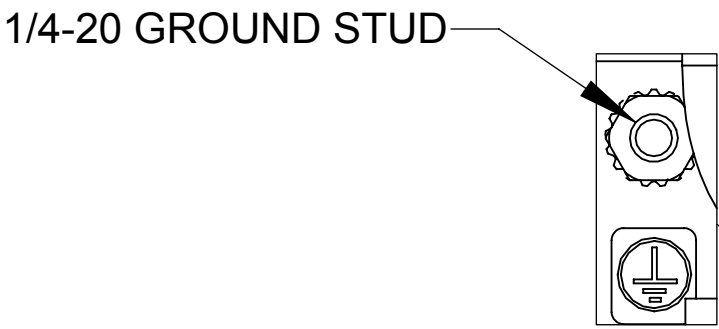
DETAIL A
CUSTOMER CONNECTION
DETAIL VIEW (THERMAL)



DETAIL B
CUSTOMER CONNECTION
DETAIL VIEW
(6 PLACES)




BOTTOM VIEW



TOP VIEW
(PANELS REMOVED)

NOTES:

1. TIGHTEN TERMINAL BLOCK SCREWS TO 16 IN/LBS. TORQUE.
2. TERMINAL WIRE SIZE: 4-14 AWG.

THE COMPONENT, PART OR ASSEMBLY DESCRIBED IN THIS DOCUMENT MUST COMPLY WITH THE EU(EUROPEAN UNION) DIRECTIVE RoHS2		MATERIAL		CONFIDENTIAL AND PROPRIETARY INFORMATION THIS DOCUMENT CONTAINS CONFIDENTIAL AND PROPRIETARY INFORMATION OF MTE CORPORATION AND MAY NOT BE USED, COPIED OR DISCLOSED TO OTHERS EXCEPT WITH THE AUTHORIZED WRITTEN PERMISSION OF MTE CORPORATION		
CONTAINS <0.1% OF ANY SVHC BY WEIGHT PER REACH REGULATION				DESCRIPTION		
UNLESS OTHERWISE SPECIFIED DIMENSIONS ARE IN INCHES [MM] TOLERANCES ARE: ANGLES: ± 1 ° 1 PLACE .X: ± .1 [2.5] 2 PLACE .XX: ± .03 [0.76] 3 PLACE .XXX: ± .010 [0.254]	 N83 W13330 Leon Road Menomonee Falls, WI 53051 USA 800.455.4683 262.253.8200	DRAWN	DATE	SWG 45A 600V 2-8kHz FILTER, NEMA 3R ENCL.		
		MN	08/07/18			
		CHECKED	DATE			
		MN	08/07/18			
		APPROVED	DATE	SIZE	DWG No.	REV
		TL	10/09/18	D	CD SWGW0045E	00
				SCALE	1:4	SHEET 1 OF 1