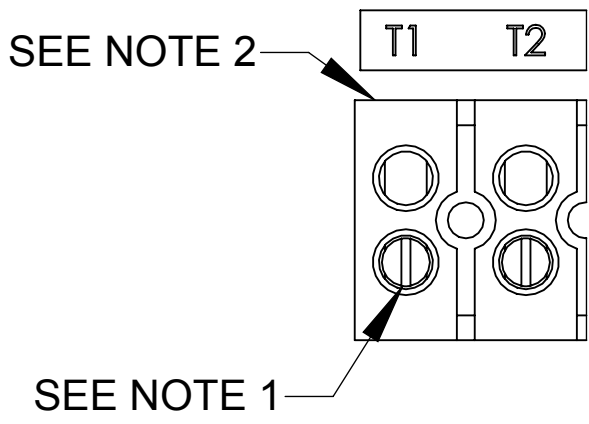
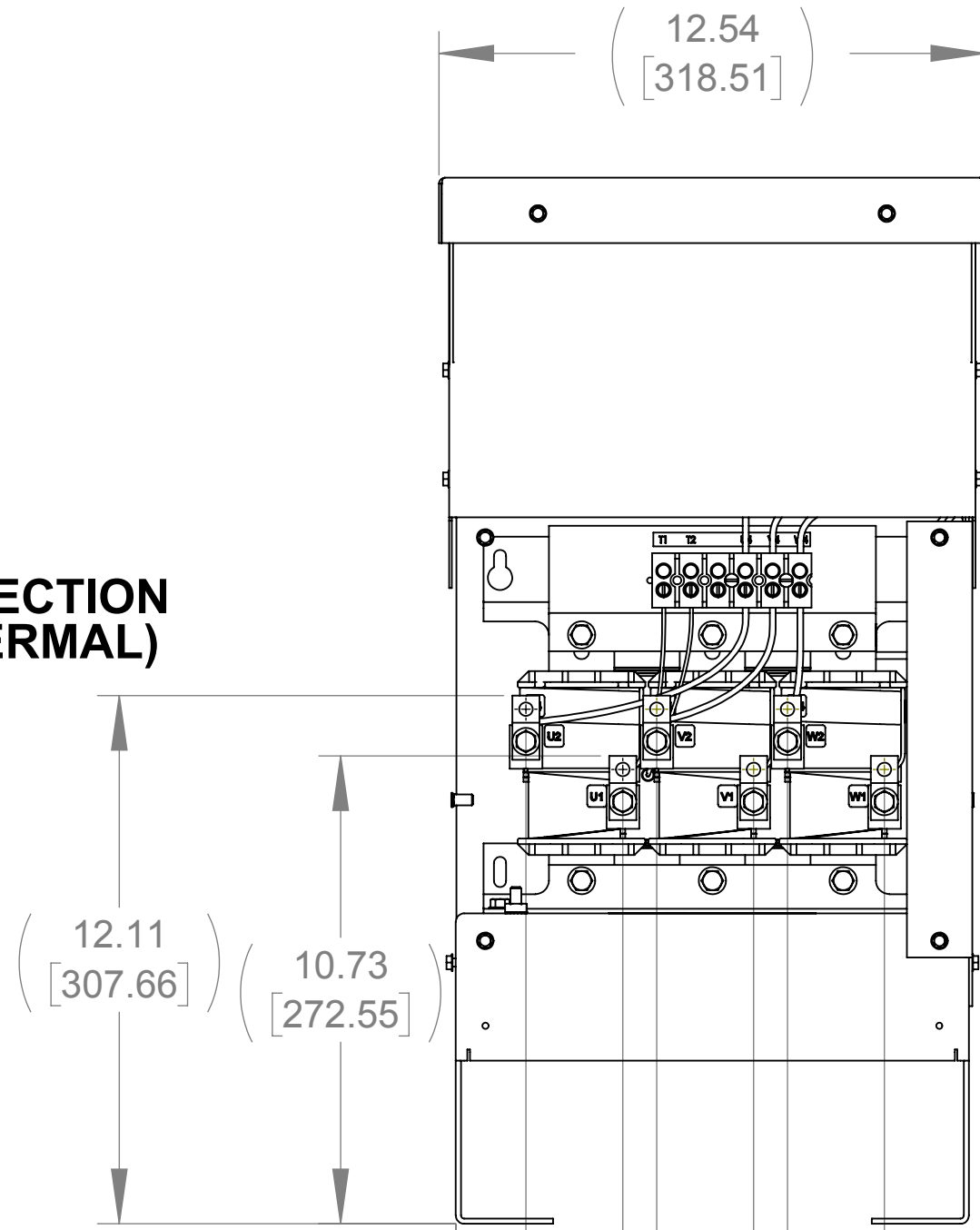


WEIGHT (LBS)
94

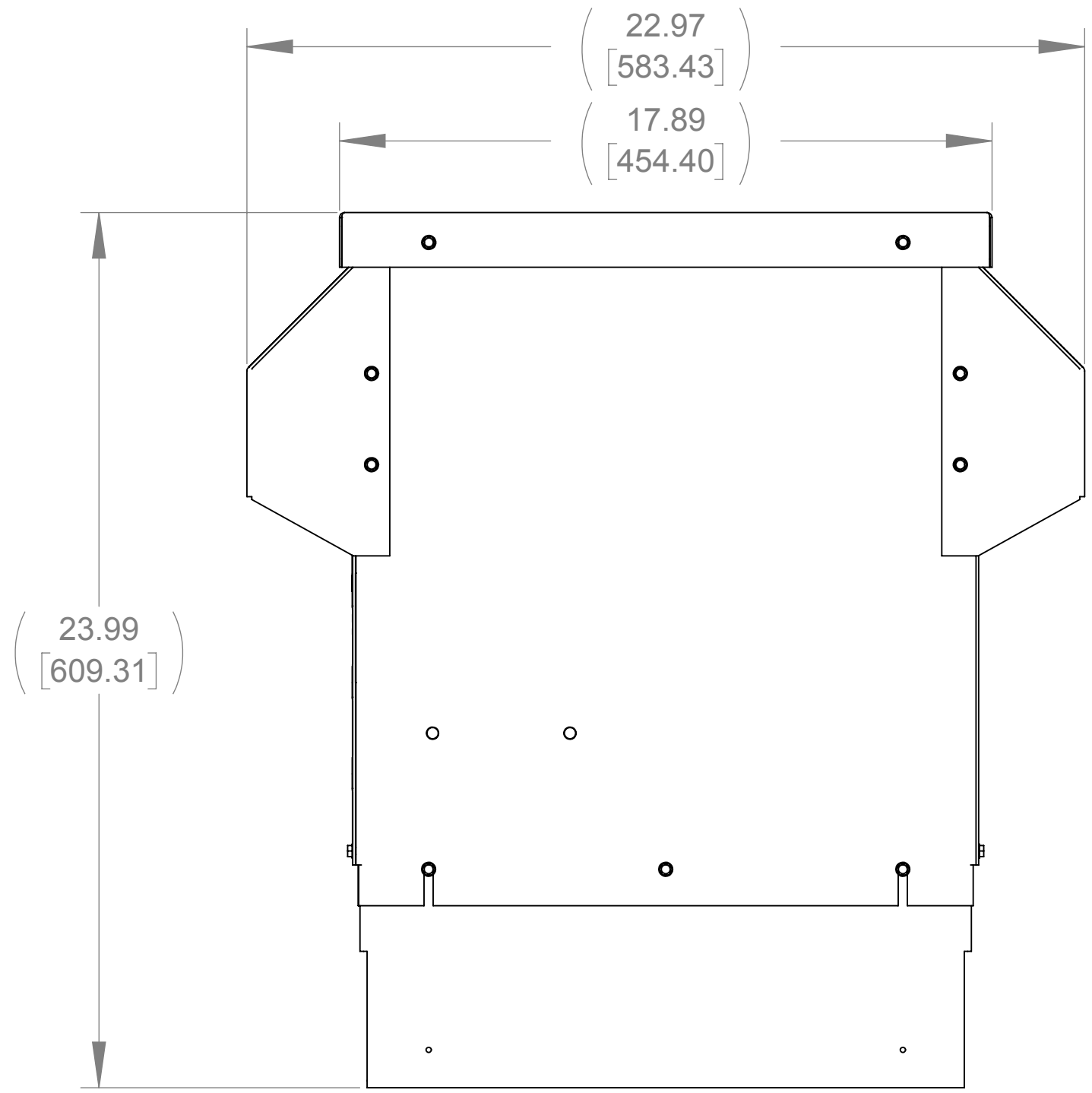
ECO No	DESCRIPTION	REV BY	DATE
M8994	CHANGED ALL WARNING CAUTION, DANGER LABELS TO SIMPLIFIED AND ADDED GROUNDING NOTE	KV	02/13/14



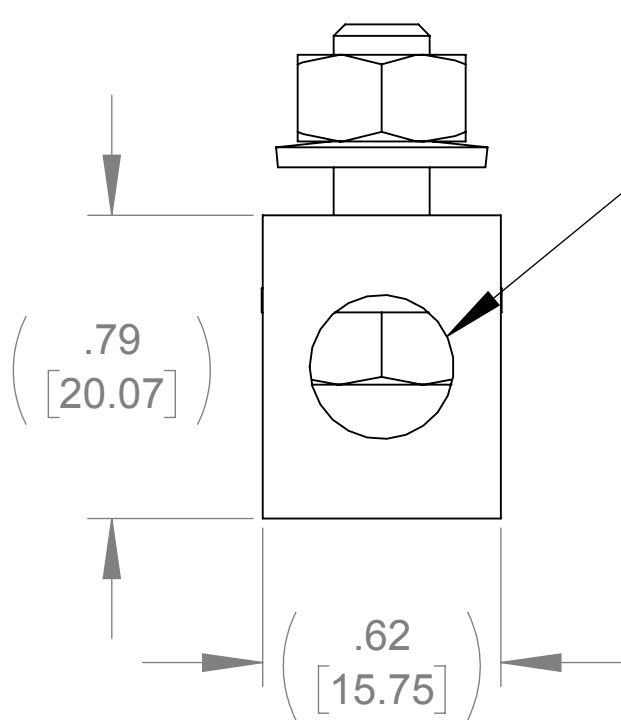
CUSTOMER CONNECTION
DETAIL VIEW (THERMAL)



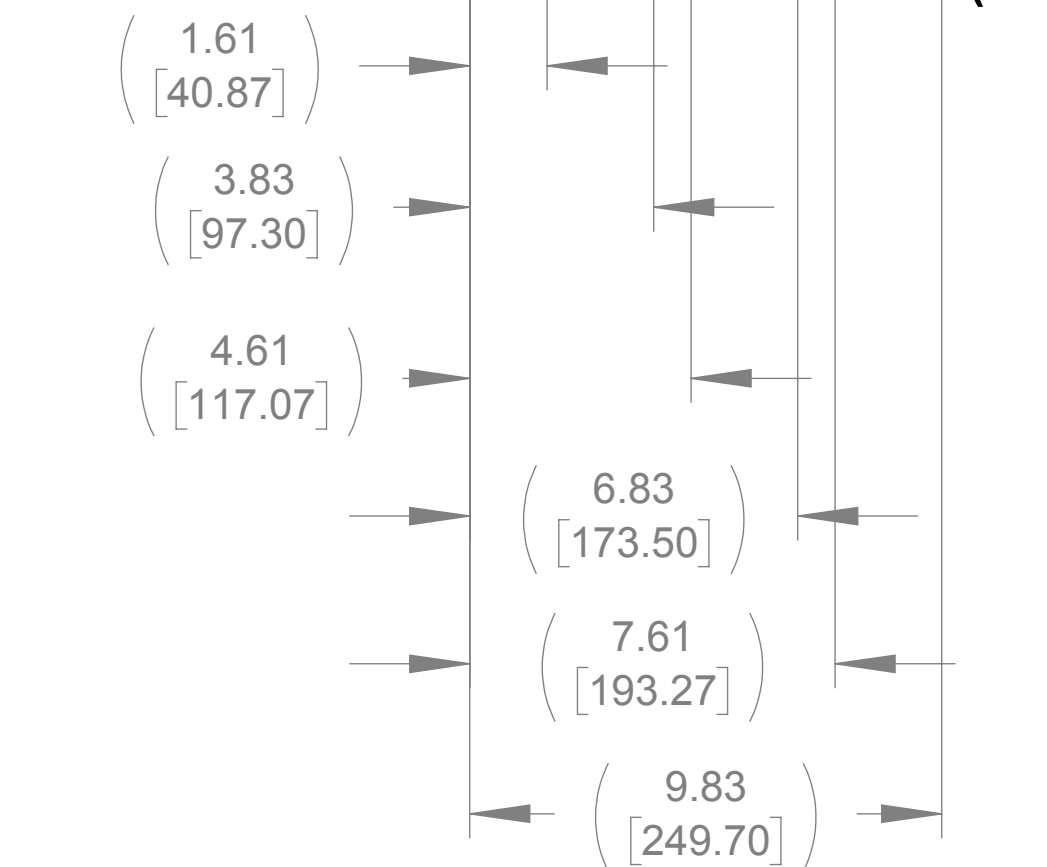
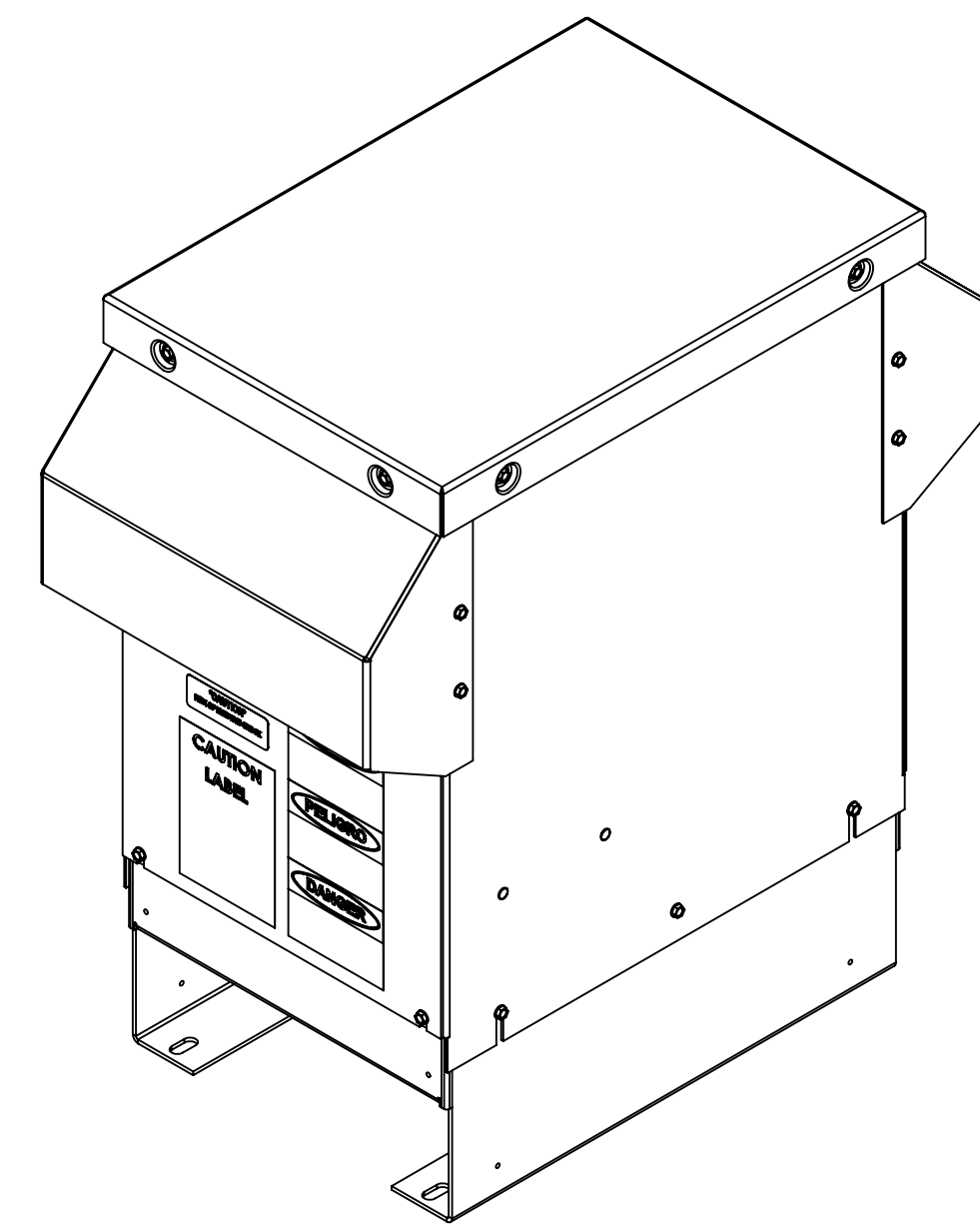
FRONT VIEW
(FRONT PANEL REMOVED)



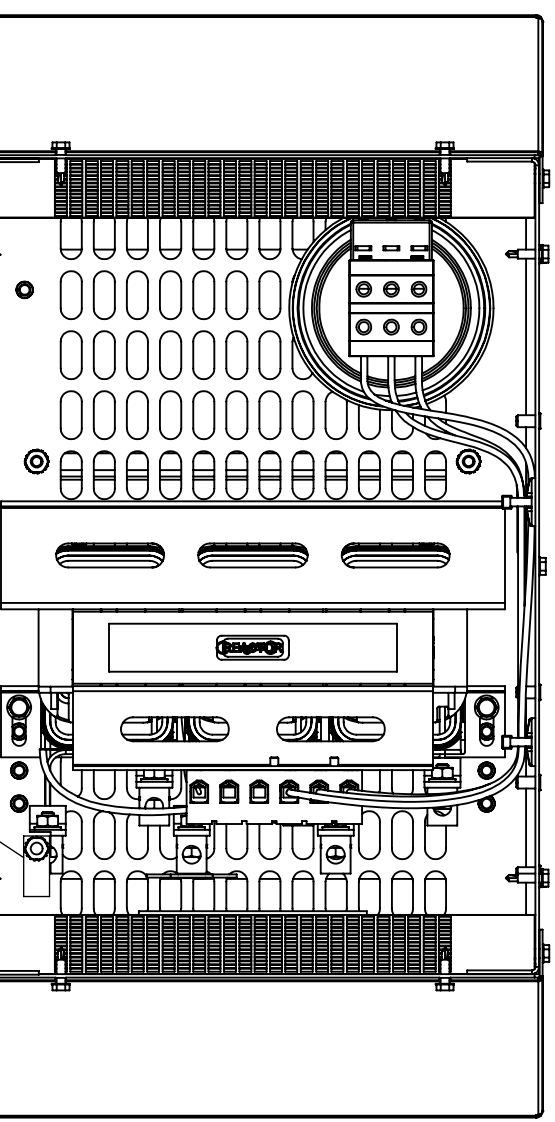
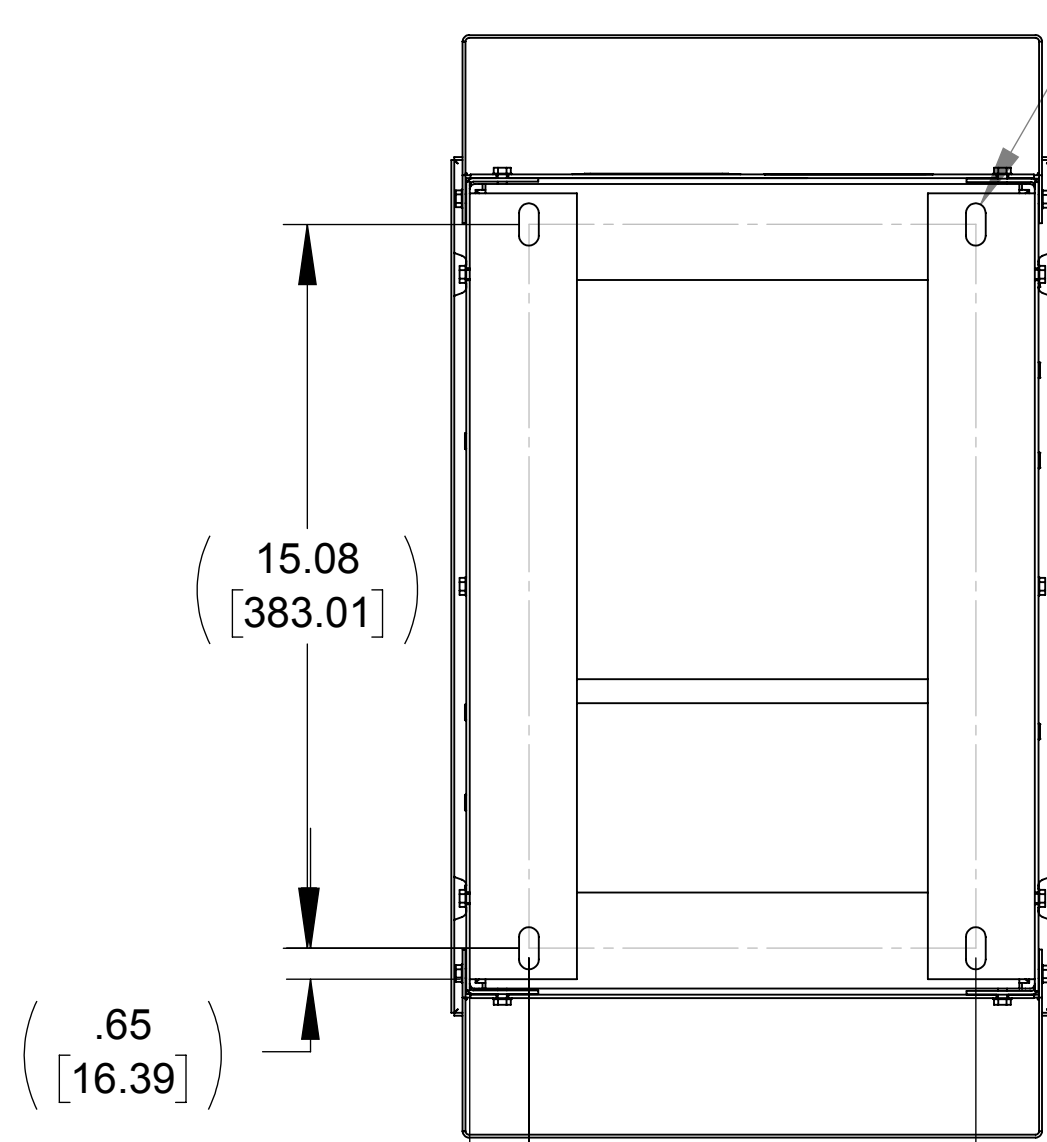
RIGHT SIDE VIEW



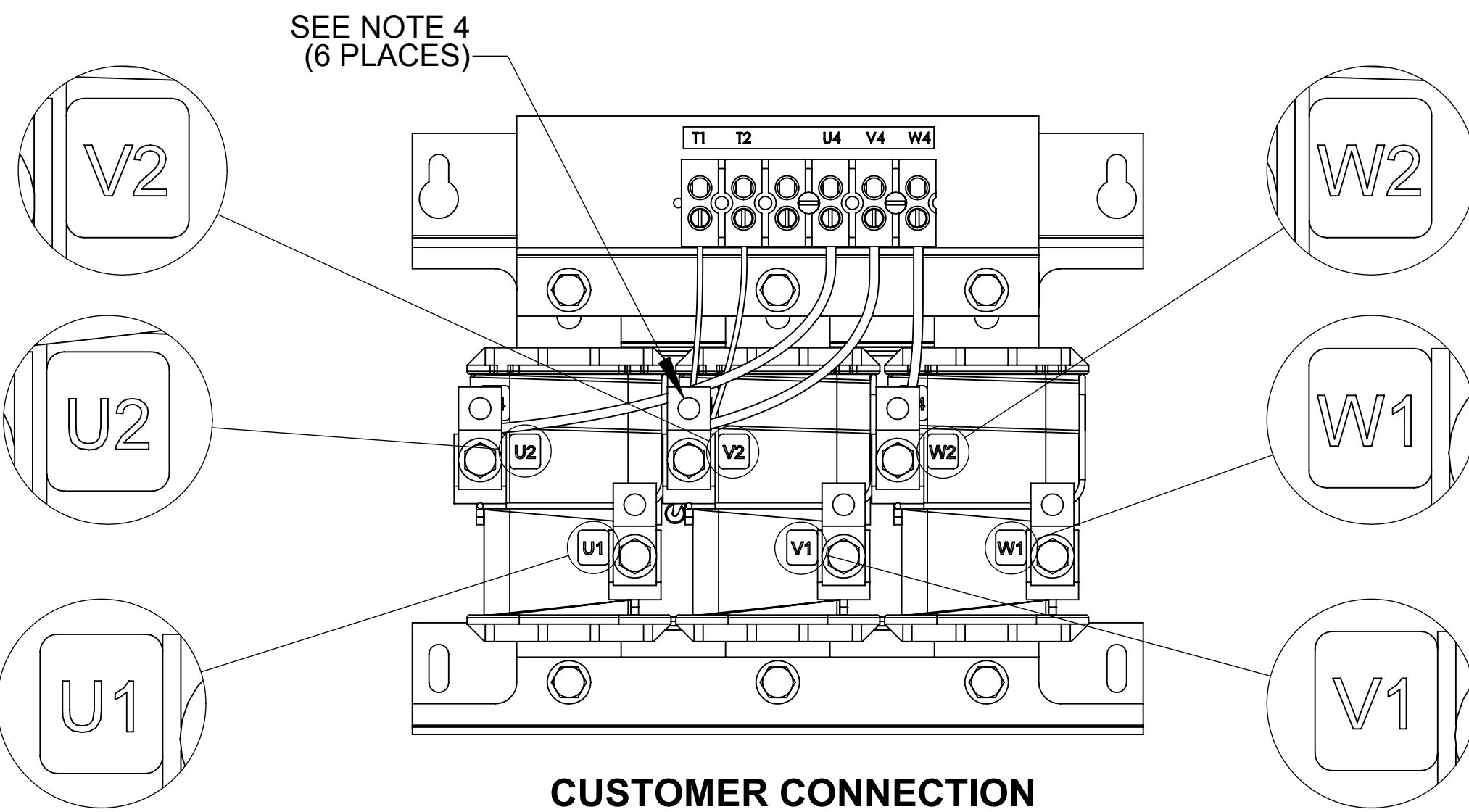
LUG VIEW
(TYP 6 PLACES
U1, V1, W1,
U2, V2 & W2 TERMINALS)



BOTTOM VIEW



TOP VIEW
(TOP HAT REMOVED)



CUSTOMER CONNECTION
DETAIL VIEW

- NOTES:
1. TIGHTEN TERMINAL BLOCK SCREWS TO 16 IN/LBS. TORQUE, MAX.
 2. TERMINAL WIRE SIZE: 4-14 AWG.
 3. TERMINAL WIRE SIZE: 14 AWG - 1/0 AWG..
 4. TIGHTEN TERMINAL BLOCK SCREWS TO 45 IN/LBS. TORQUE, MAX.

THE COMPONENT, PART OR ASSEMBLY DESCRIBED IN THIS DOCUMENT MUST COMPLY WITH THE EU(EUROPEAN UNION) DIRECTIVE RoHS2		MATERIAL		CONFIDENTIAL AND PROPRIETARY INFORMATION THIS DOCUMENT CONTAINS CONFIDENTIAL AND PROPRIETARY INFORMATION OF MTE CORPORATION AND MAY NOT BE USED, COPIED OR DISCLOSED TO OTHERS EXCEPT WITH THE AUTHORIZED WRITTEN PERMISSION OF MTE CORPORATION	
CONTAINS <0.1% OF ANY SVHC BY WEIGHT PER REACH REGULATION				DESCRIPTION	
UNLESS OTHERWISE SPECIFIED DIMENSIONS ARE IN INCHES [MM] TOLERANCES ARE: ANGLES: ± 1 ° 1 PLACE .X: ± .1 [2.5] 2 PLACE .XX: ± .03 [0.76] 3 PLACE .XXX: ± .010 [0.254]		MTE AN BL POWER ELECTRONICS COMPANY N83 W13330 Leon Road Menomonee Falls, WI 53051 USA 800.455-4683 262.253-8200		SWG 35A 380-480V 2-8kHz FILTER NEMA 3R	
		DRAWN MN	DATE 09/16/13	SIZE D	DWG No. CD SWGW0035D
		CHECKED JM	DATE 02/13/14	REV 02	
		APPROVED JM	DATE 02/13/14	SCALE 1:3	SHEET 1 OF 1