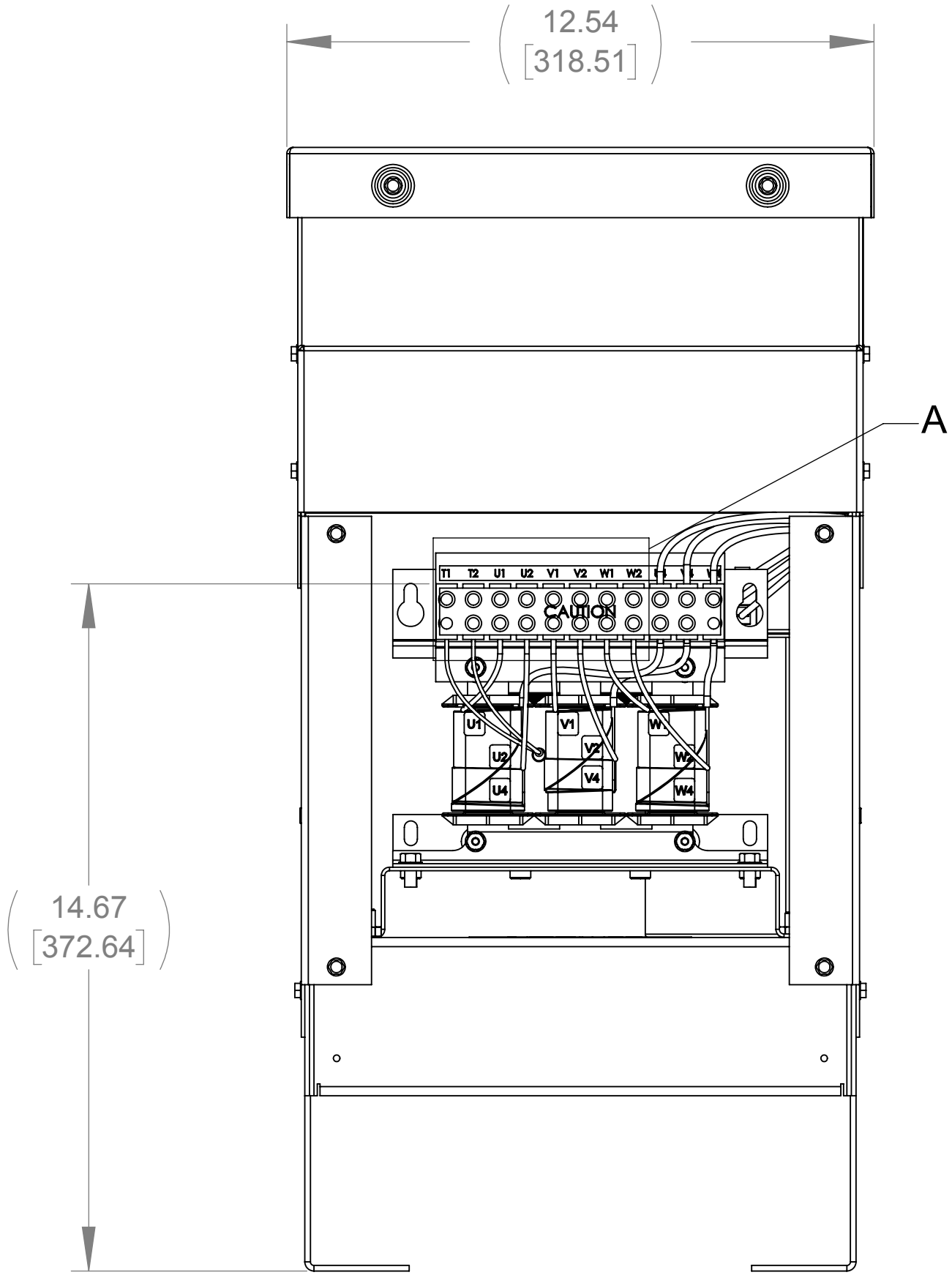
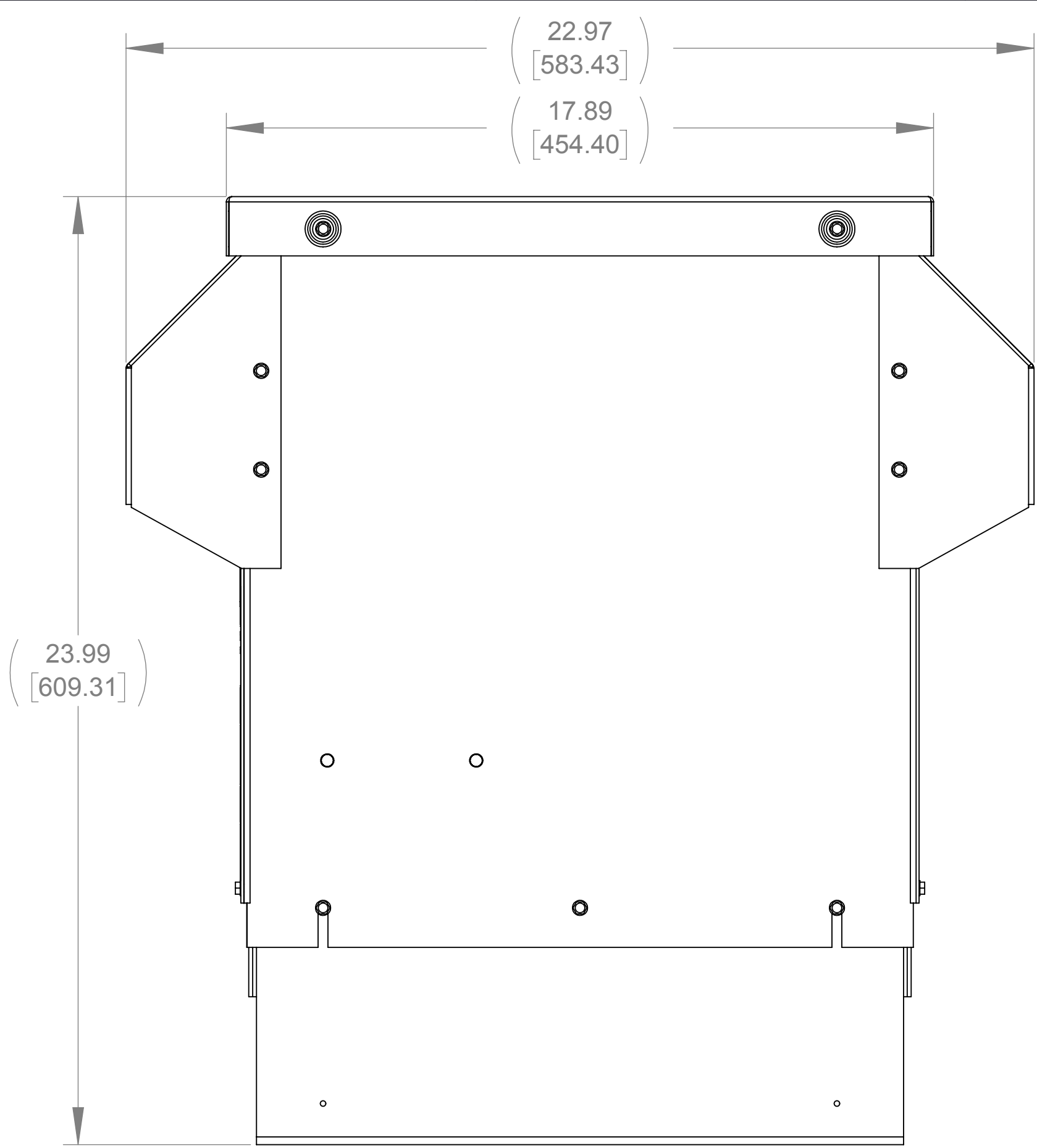


APPROX. WEIGHT  
(LBS)  
68

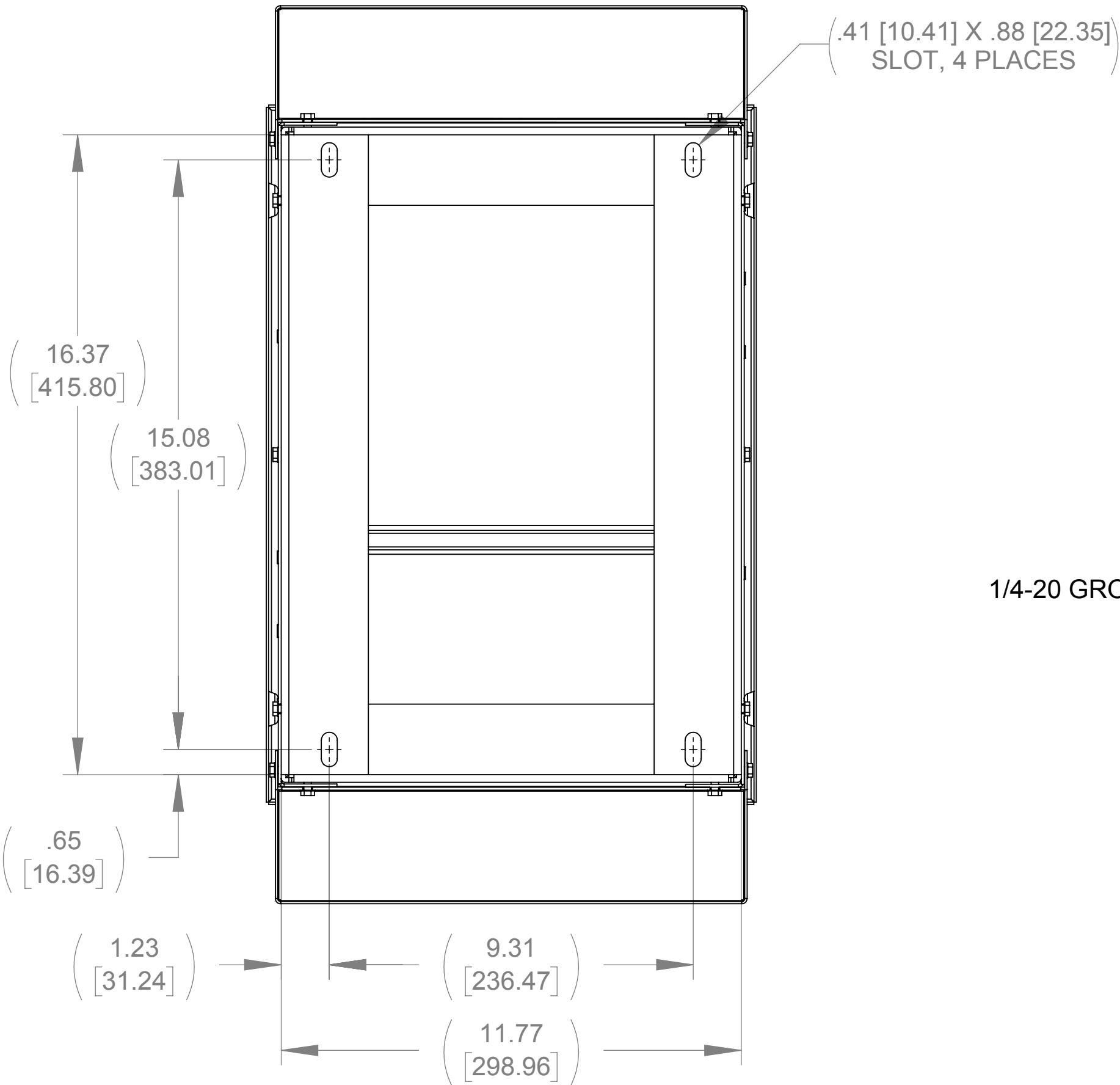
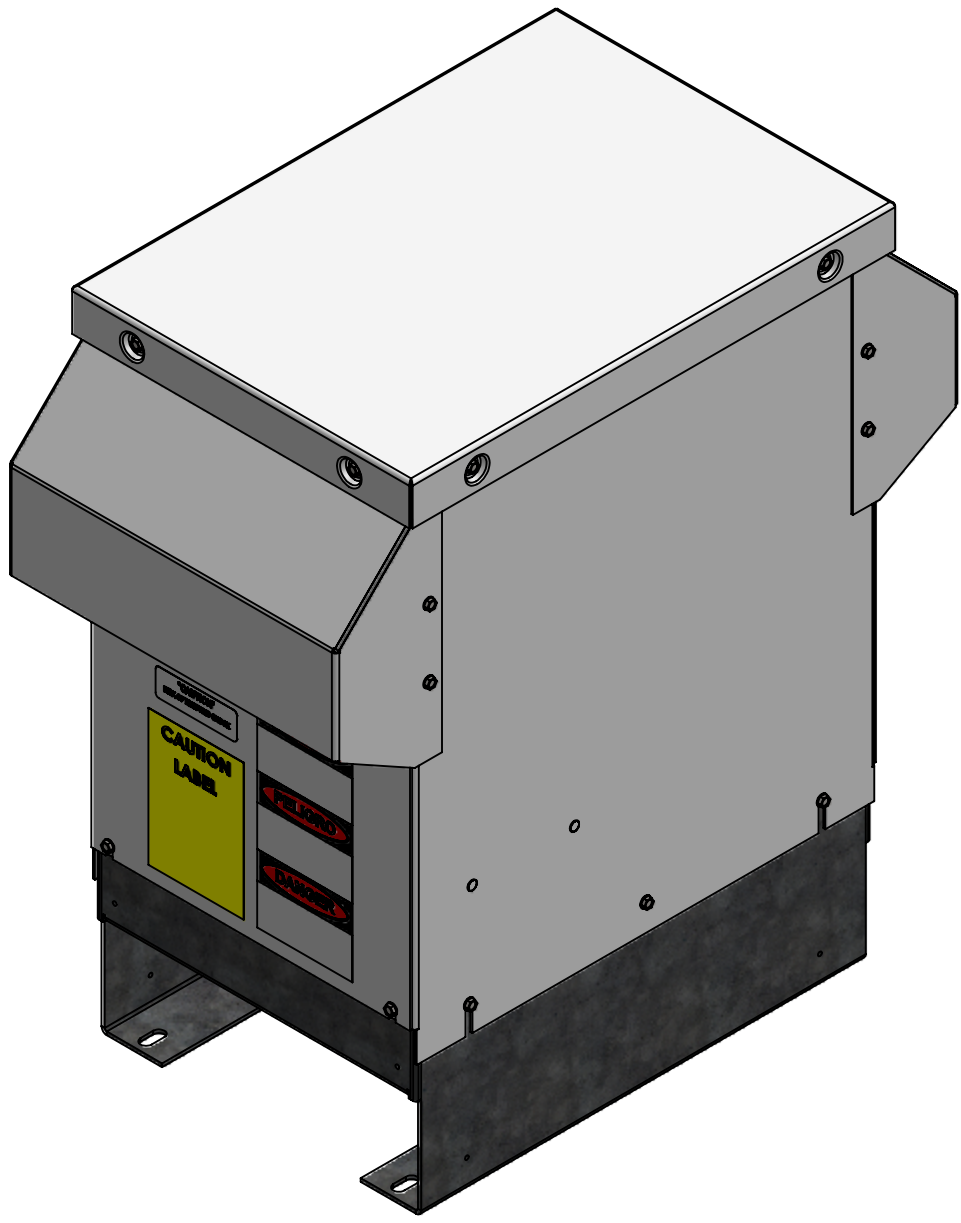
ECO No	DESCRIPTION	REV BY	DATE
M11740	GRAPHICS ONLY TO SHOW FINAL COILS	MN	04/18/19



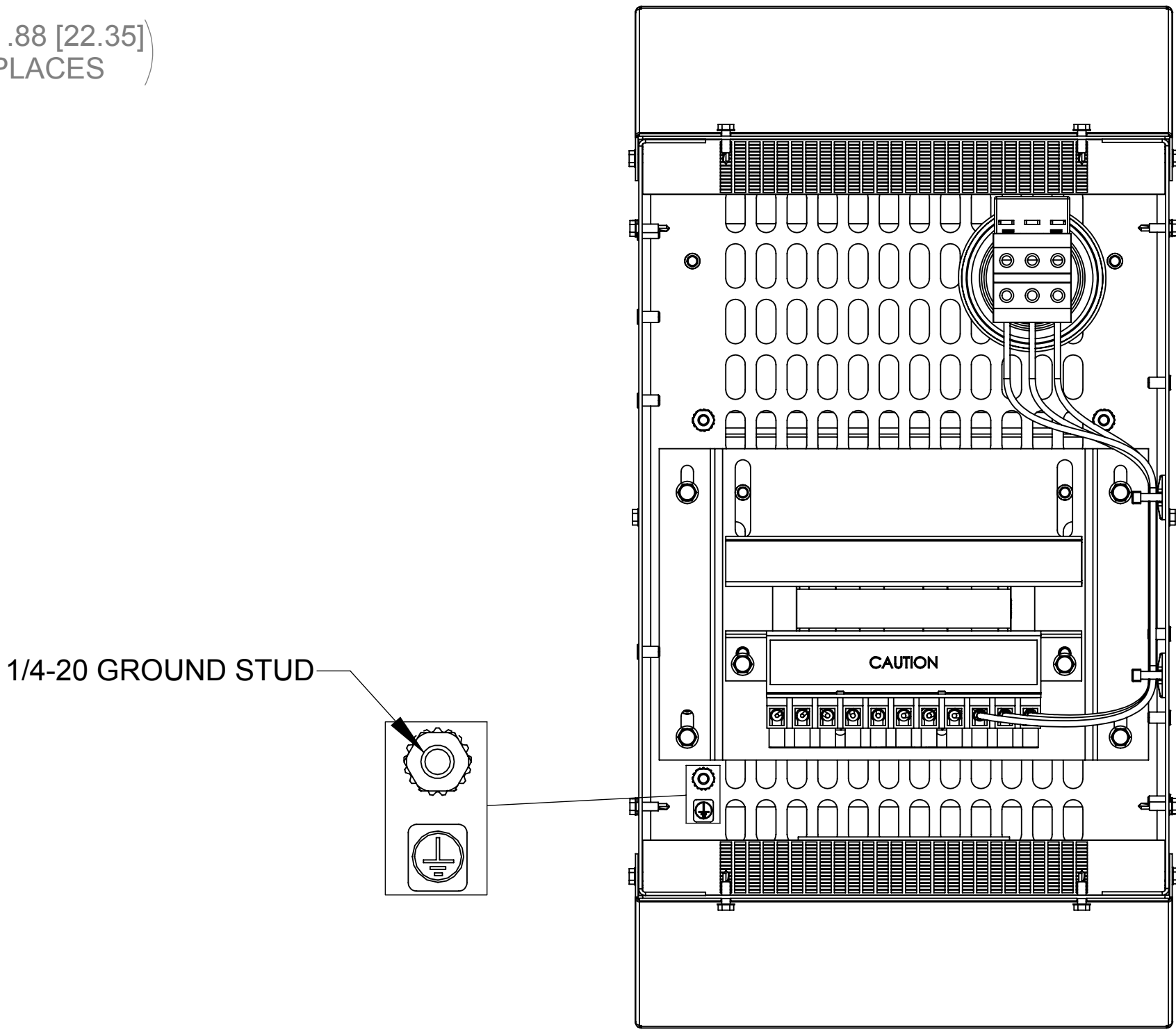
FRONT VIEW  
(PANELS REMOVED)



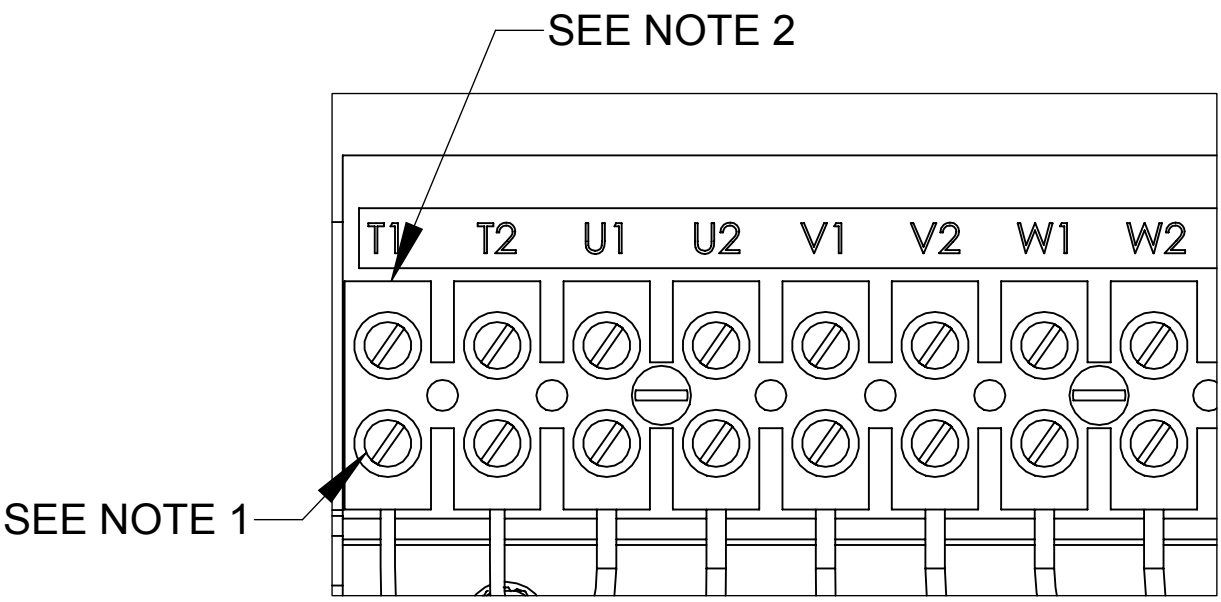
SIDE VIEW



BOTTOM VIEW



TOP VIEW  
(PANELS REMOVED)



DETAIL A  
CUSTOMER CONNECTION  
DETAIL VIEW

NOTES:

1. TIGHTEN TERMINAL SCREW WIRES TO 16 IN/LBS. TORQUE.
2. TERMINAL WIRE SIZE: 4-14 AWG.

THE COMPONENT, PART OR ASSEMBLY DESCRIBED IN THIS DOCUMENT MUST COMPLY WITH THE EU(EUROPEAN UNION) DIRECTIVE RoHS2		MATERIAL		CONFIDENTIAL AND PROPRIETARY INFORMATION THIS DOCUMENT CONTAINS CONFIDENTIAL AND PROPRIETARY INFORMATION OF MTE CORPORATION AND MAY NOT BE USED, COPIED OR DISCLOSED TO OTHERS EXCEPT WITH THE AUTHORIZED WRITTEN PERMISSION OF MTE CORPORATION	
CONTAINS <0.1% OF ANY SVHC BY WEIGHT PER REACH REGULATION				DESCRIPTION	
UNLESS OTHERWISE SPECIFIED DIMENSIONS ARE IN INCHES [MM] TOLERANCES ARE: ANGLES: ± 1 ° 1 PLACE .X: ± .1 [2.5] 2 PLACE .XX: ± .03 [0.76] 3 PLACE .XXX: ± .010 [0.254]		DRAWN MN		DATE 07/19/18	
		CHECKED MN		DATE 04/18/19	
		APPROVED		DATE	
		SIZE D		DWG No. CD SWGW0003E	
		SCALE 1:3		REV 01	
				SHEET 1 OF 1	



N83 W13330 Leon Road  
Menomonee Falls, WI 53051 USA  
800.455.4683  
262.253.8200