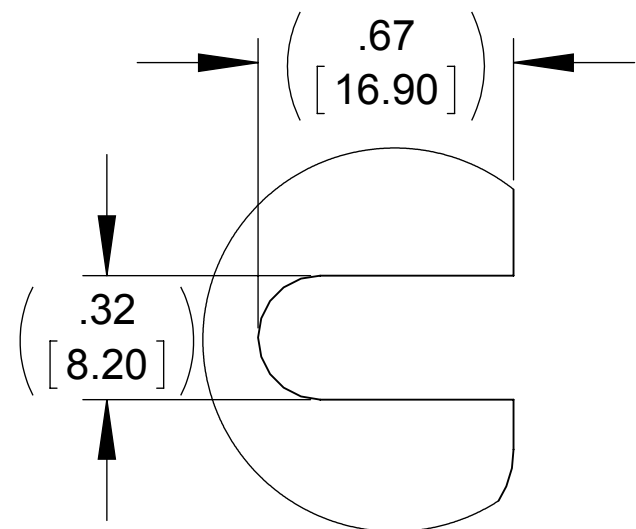
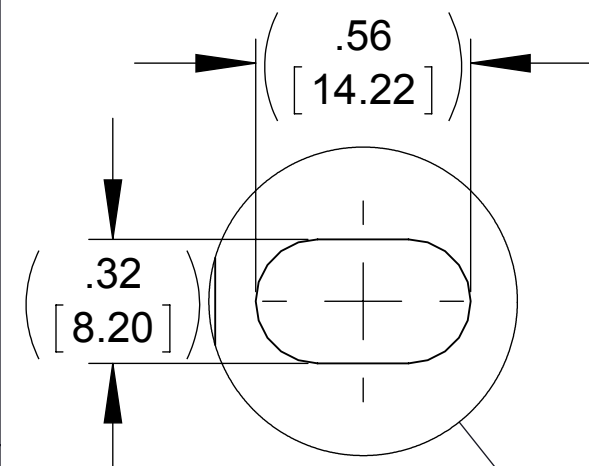
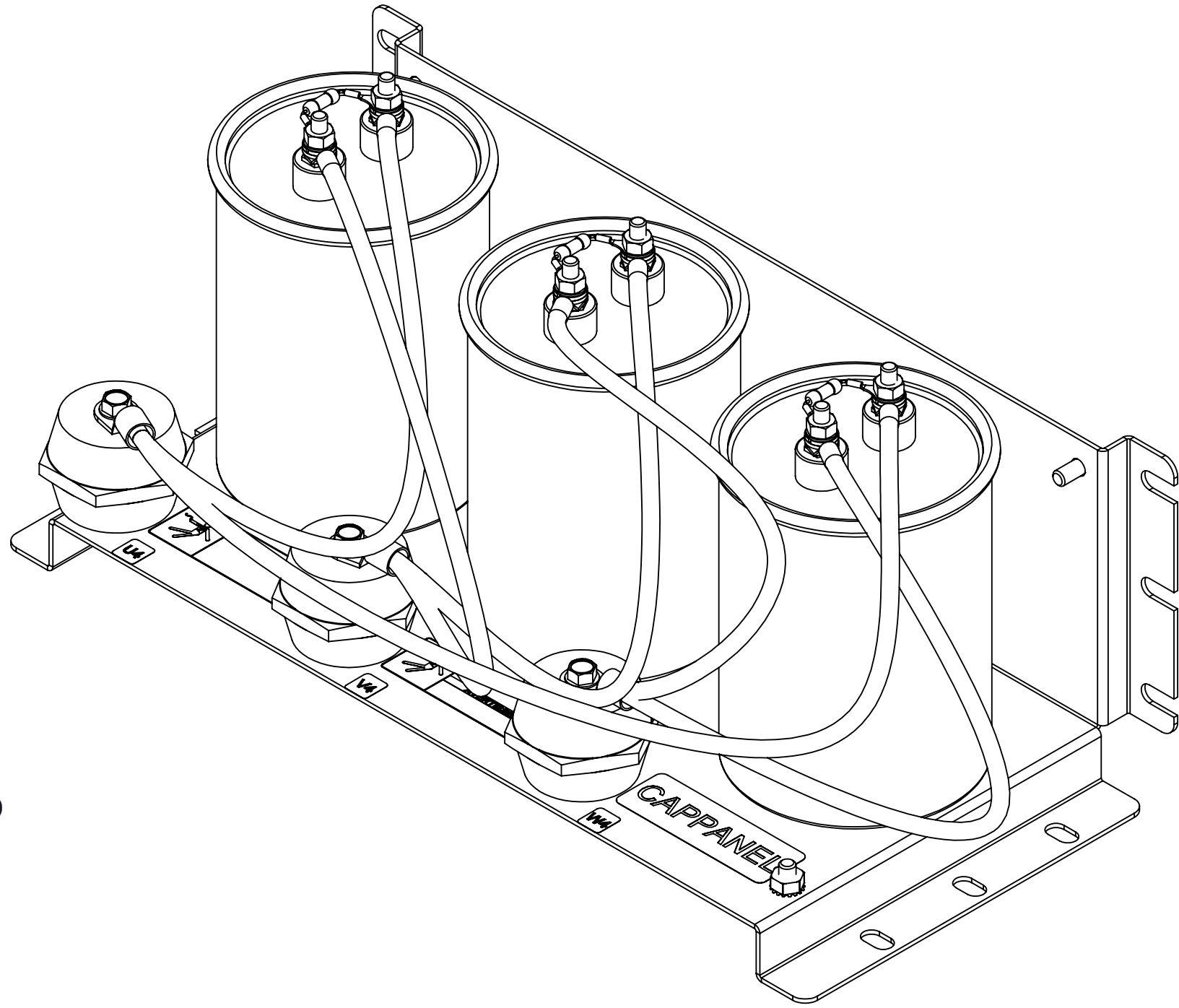


APPROX WEIGHT
(LBS.)
15

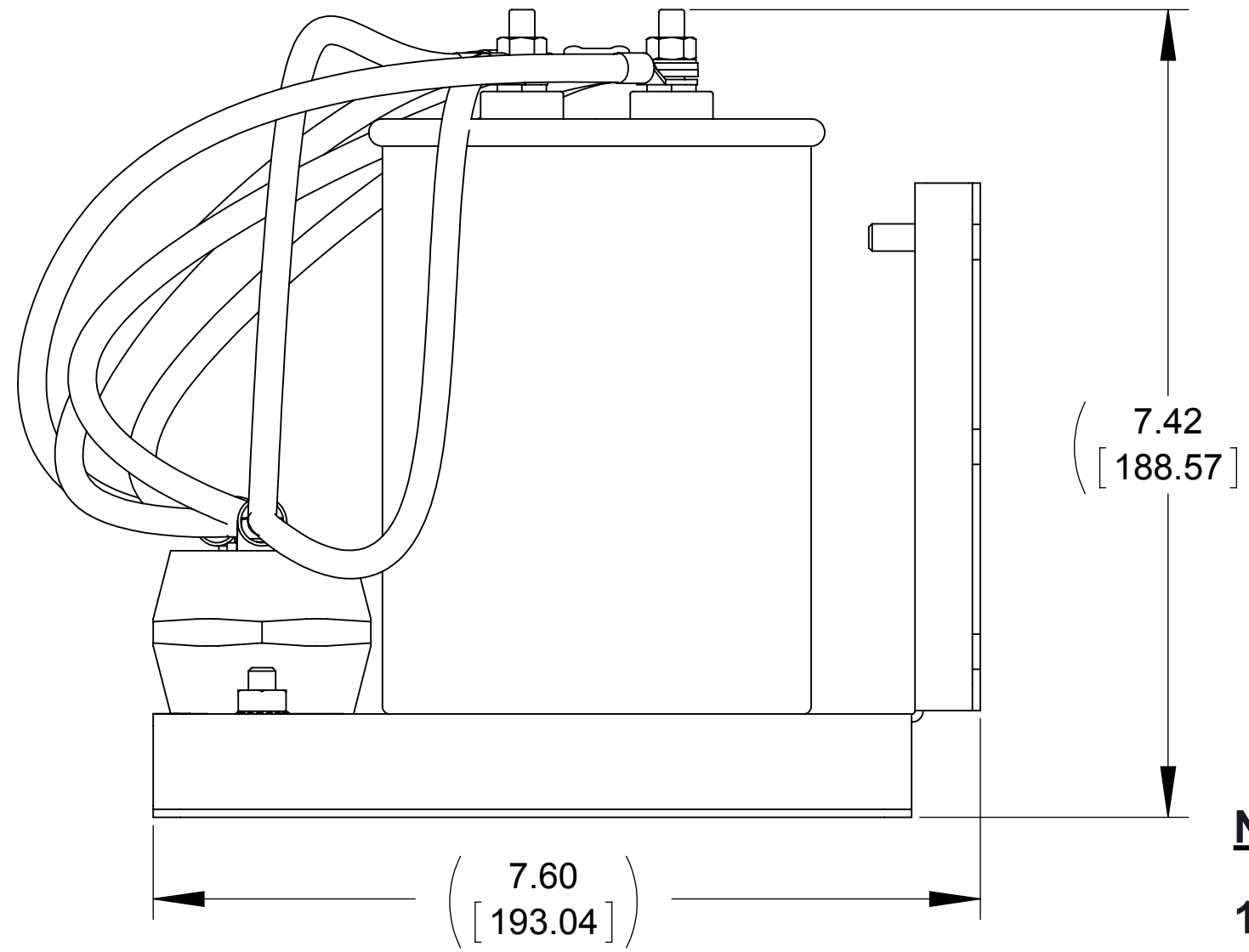
ECO No	DESCRIPTION	REV BY	DATE



DETAIL A
(6 PLACES)



(6 PLACES)



NOTE:

1. TIGHTEN STANDOFF SCREWS TO 58 IN/LBS. TORQUE, MAX.

THE COMPONENT, PART OR ASSEMBLY DESCRIBED IN THIS DOCUMENT MUST COMPLY WITH THE EU(EUROPEAN UNION) DIRECTIVE RoHS2		MATERIAL		CONFIDENTIAL AND PROPRIETARY INFORMATION THIS DOCUMENT CONTAINS CONFIDENTIAL AND PROPRIETARY INFORMATION OF MTE CORPORATION AND MAY NOT BE USED, COPIED OR DISCLOSED TO OTHERS EXCEPT WITH THE AUTHORIZED WRITTEN PERMISSION OF MTE CORPORATION		
CONTAINS <0.1% OF ANY SVHC BY WEIGHT PER REACH REGULATION				DESCRIPTION		
UNLESS OTHERWISE SPECIFIED DIMENSIONS ARE IN INCHES [MM] TOLERANCES ARE: ANGLES: ± 1 ° 1 PLACE .X: ± .1 [2.5] 2 PLACE .XX: ± .01 [0.25] 3 PLACE .XXX: ± .005 [0.127]		MTE AN SL INDUSTRIES COMPANY N83 W13330 Leon Road Menomonee Falls, WI 53051 USA 800.455.4683 262.253.8200		DRAWN KV 11/04/15	DATE 11/04/15	3 CAP ASSEMBLY 229.8uF DELTA CONFIGURATION
				CHECKED JM 11/06/15	DATE 11/06/15	
				APPROVED JM 11/06/15	DATE 11/06/15	
				SIZE D	DWG No. CD CAPPANEL-623C	REV 00
				SCALE 2:3	SHEET 1 OF 1	