

APPROX. WEIGHT
(LBS)
835

ECO No	DESCRIPTION	REV BY	DATE
M9806	CHANGED CAPPANEL-619(2) TO 619C & CAPPANEL-572 TO 572C	MN	06/01/16

D

C

B

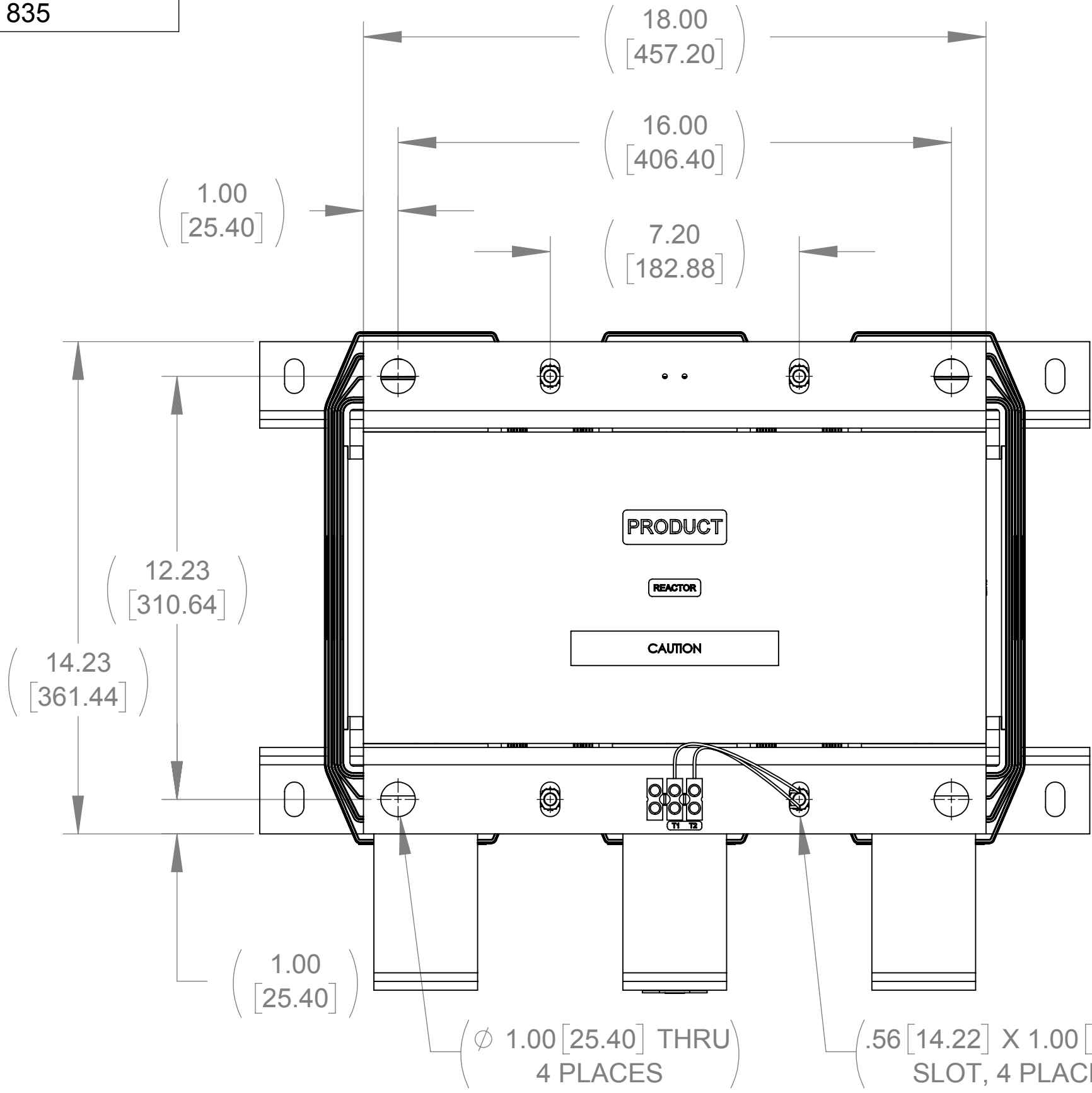
A

D

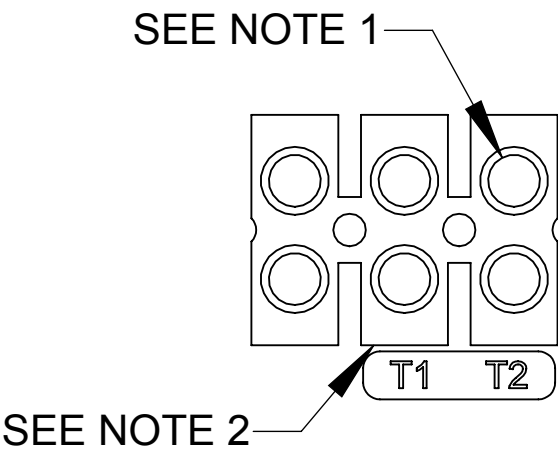
C

B

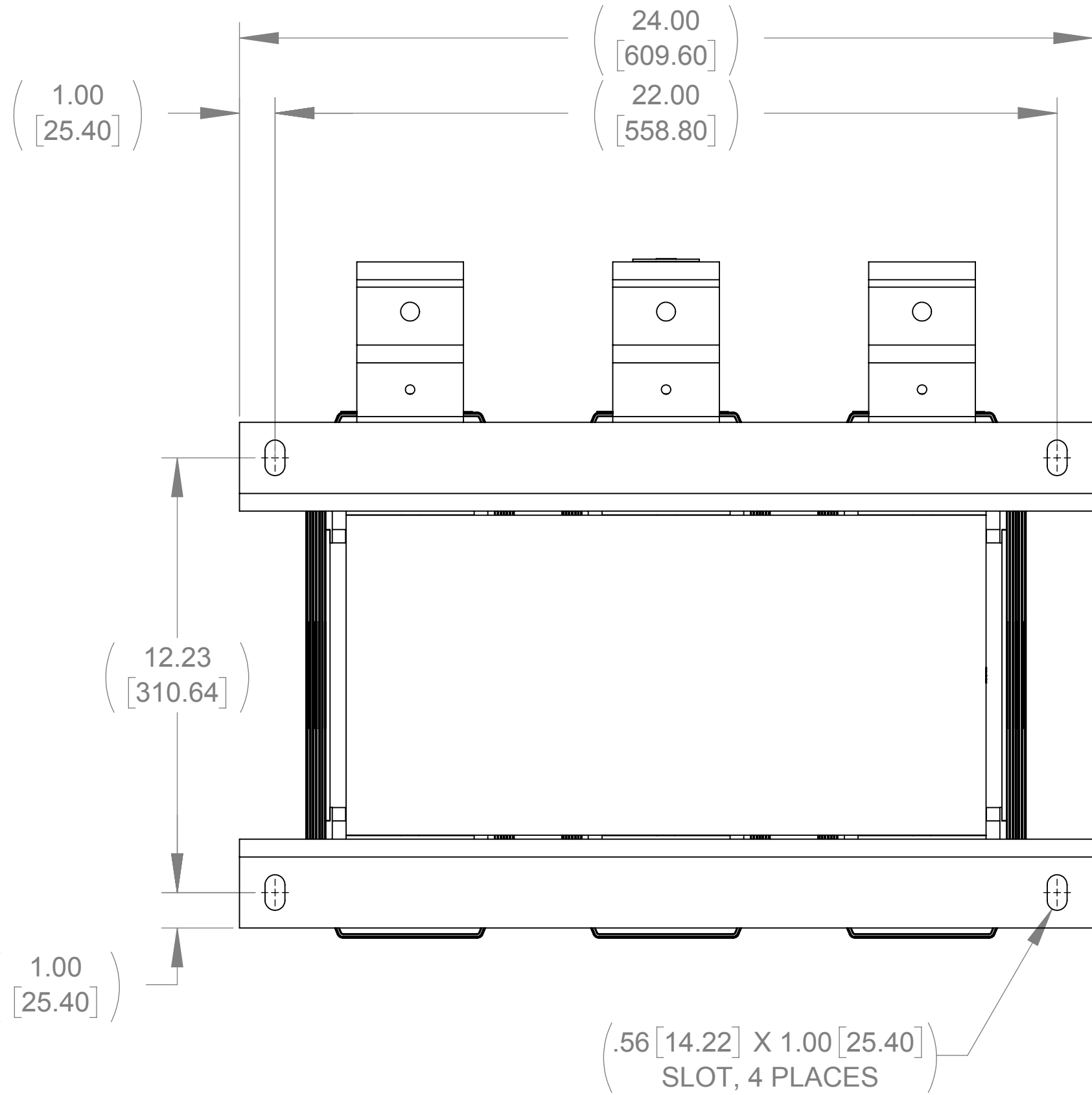
A



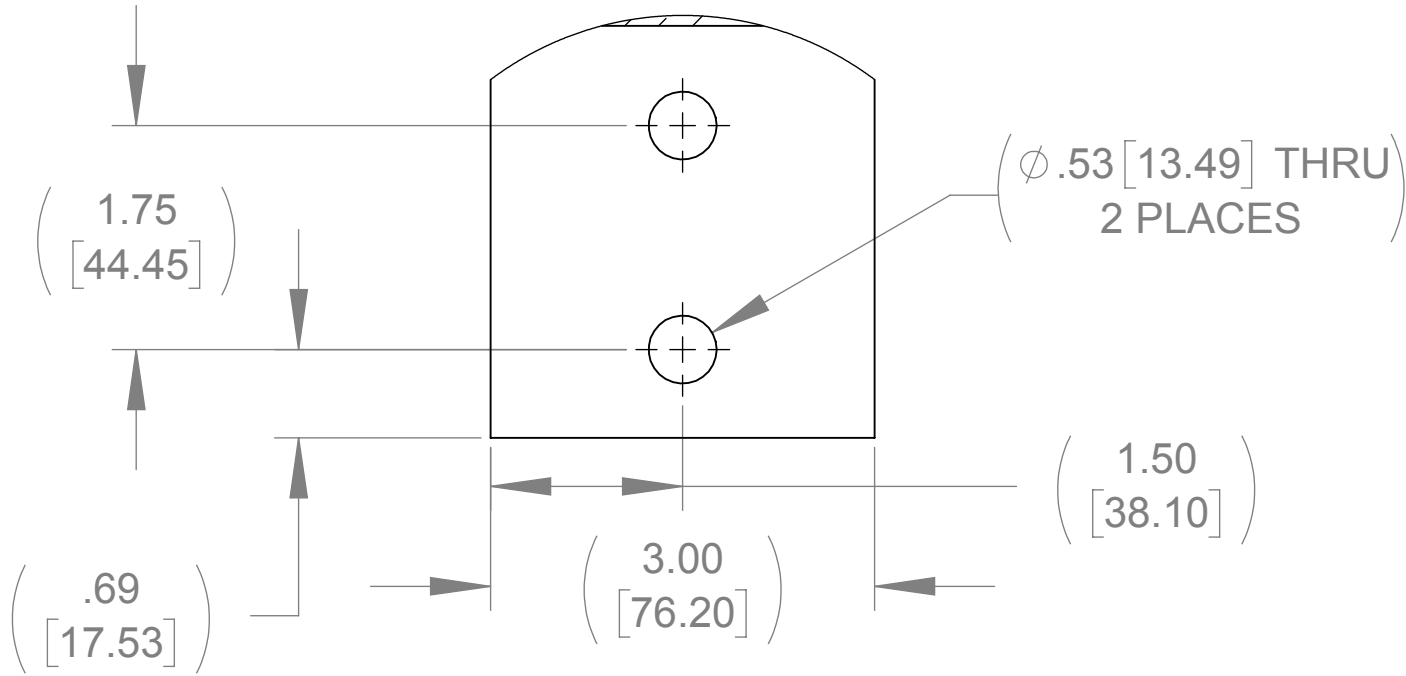
TOP VIEW



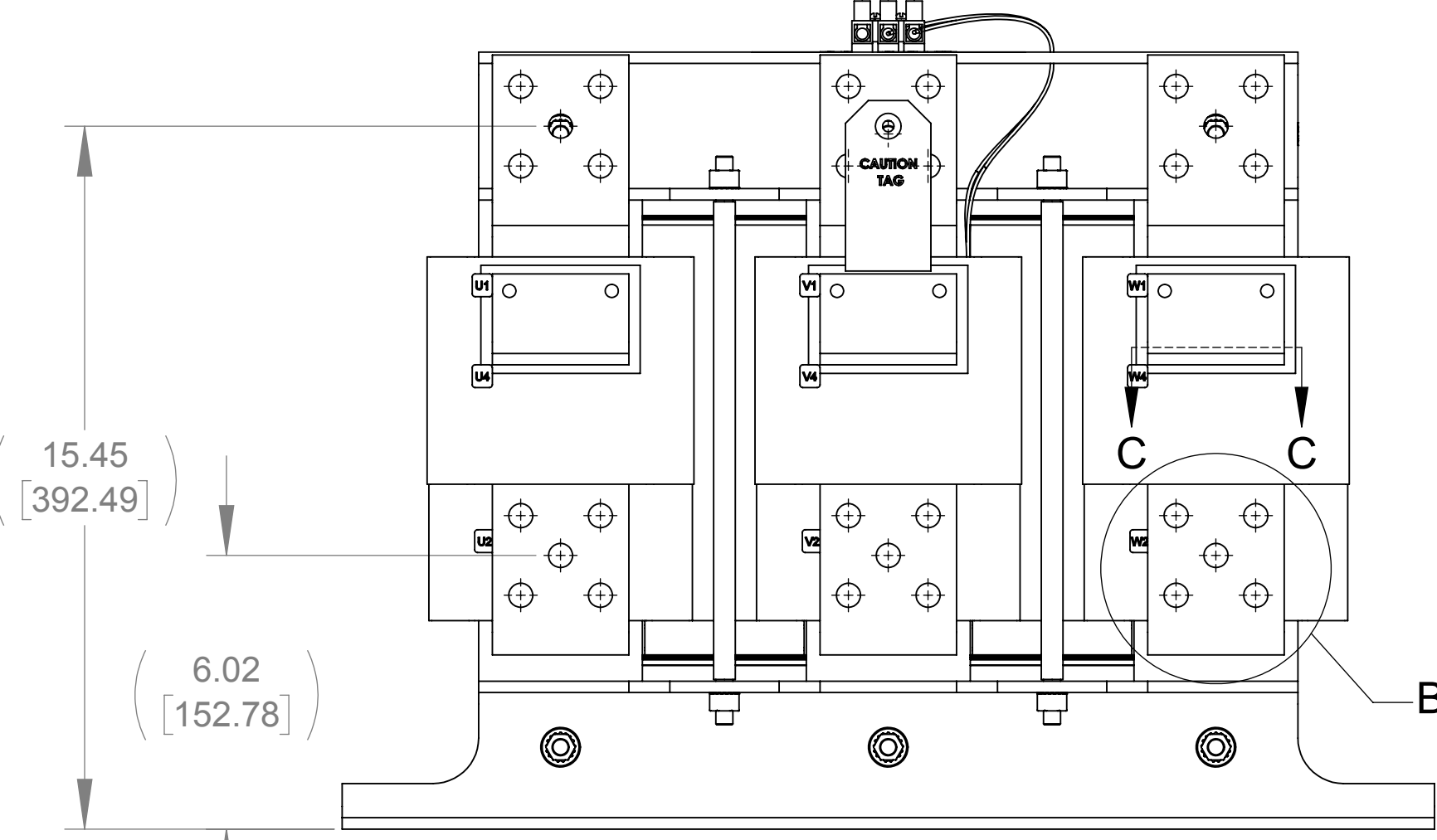
CUSTOMER CONNECTION
DETAIL VIEW(THERMAL)



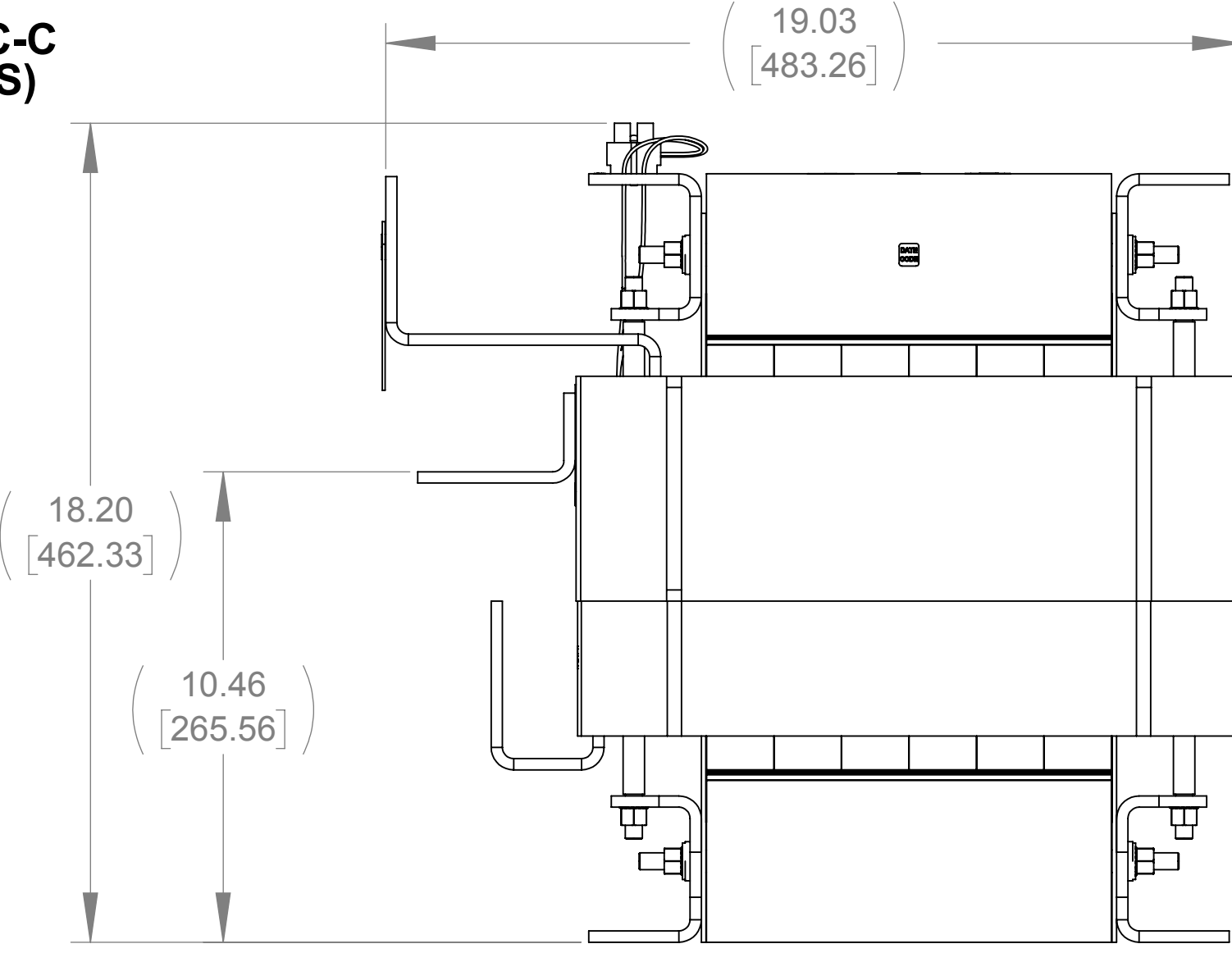
BOTTOM VIEW



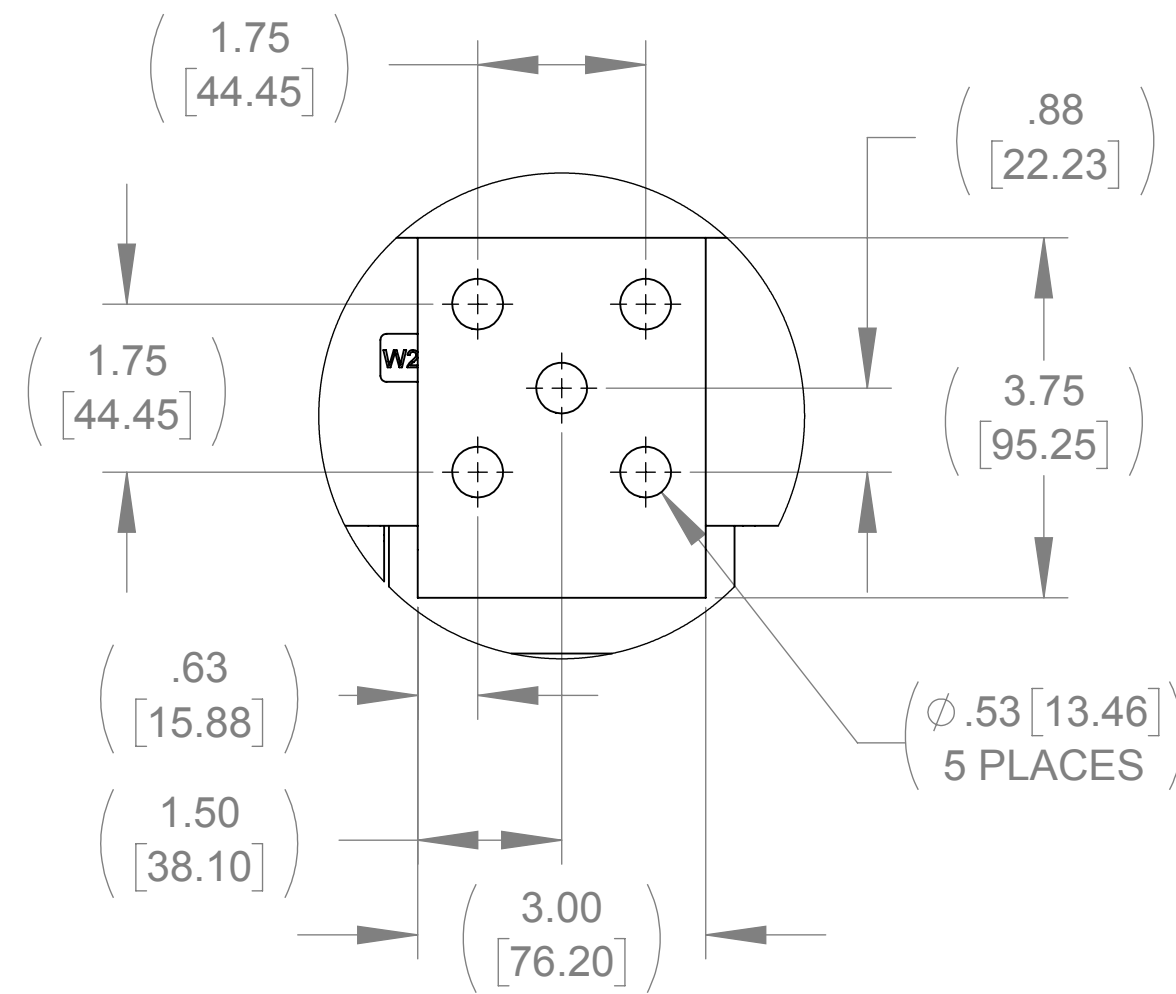
SECTION C-C
(3 PLACES)



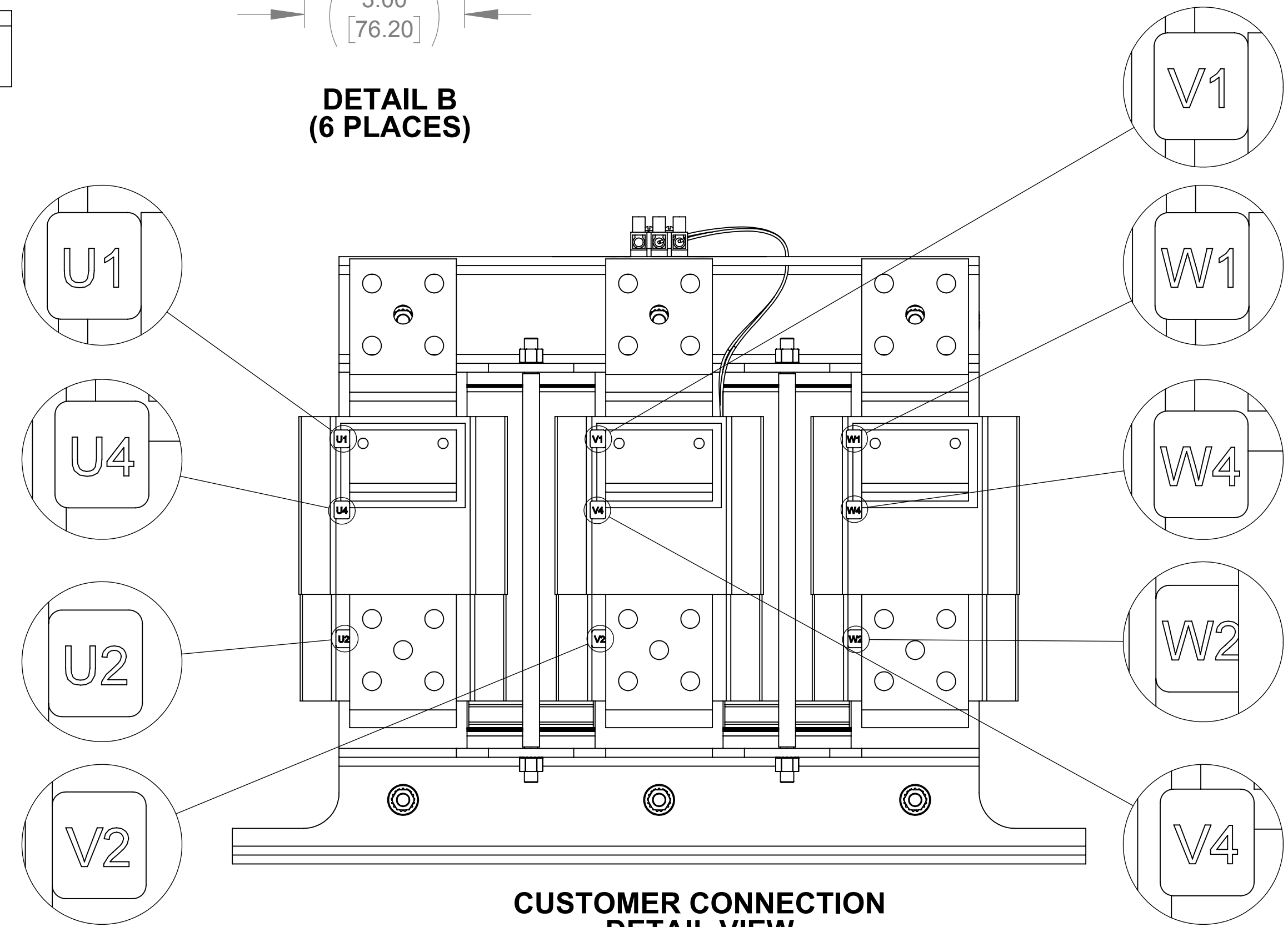
FRONT VIEW



RIGHT SIDE VIEW



DETAIL B
(6 PLACES)



CUSTOMER CONNECTION
DETAIL VIEW

- NOTES:
1. TIGHTEN TERMINAL BLOCK SCREWS TO 16 IN/LBS. TORQUE.
2. TERMINAL WIRE SIZE: 4-14 AWG.
3. FILTER INCLUDES:
CAPPANEL-572C (QTY. 1)
CAPPANEL-619C (QTY. 2)

THE COMPONENT, PART OR ASSEMBLY DESCRIBED IN THIS DOCUMENT MUST COMPLY WITH THE EU(EUROPEAN UNION) DIRECTIVE RoHS2		MATERIAL		CONFIDENTIAL AND PROPRIETARY INFORMATION THIS DOCUMENT CONTAINS CONFIDENTIAL AND PROPRIETARY INFORMATION OF MTE CORPORATION AND MAY NOT BE USED, COPIED OR DISCLOSED TO OTHERS EXCEPT WITH THE AUTHORIZED WRITTEN PERMISSION OF MTE CORPORATION	
CONTAINS <0.1% OF ANY SVHC BY WEIGHT PER REACH REGULATION				DESCRIPTION	
UNLESS OTHERWISE SPECIFIED DIMENSIONS ARE IN INCHES [MM] TOLERANCES ARE: ANGLES: $\pm 1^\circ$ 1 PLACE .X: $\pm .1$ [2.5] 2 PLACE .XX: $\pm .03$ [0.76] 3 PLACE .XXX: $\pm .010$ [0.254]		DRAWN KV 10/22/14 CHECKED JM 06/01/16 APPROVED JM 06/01/16		SWG 850A 380-480V 2-8KHZ OPEN PANEL	
N83 W13330 Leon Road Menomonee Falls, WI 53051 USA 800.455.4683 262.253.8200		SIZE D CD SWGM0850D		REV 03	
		SCALE 1:3		SHEET 1 OF 1	