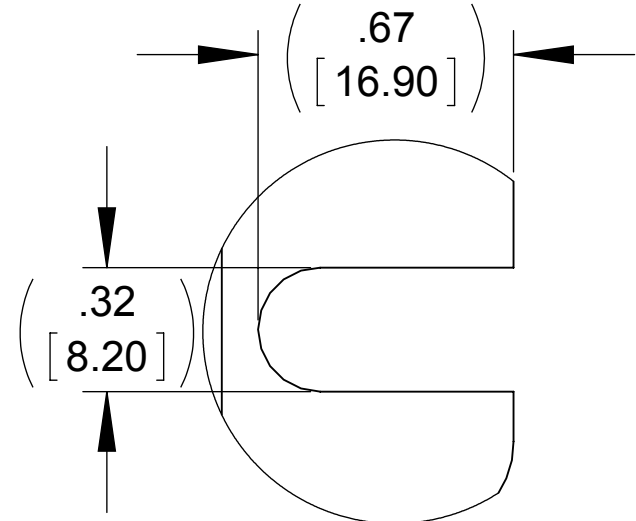
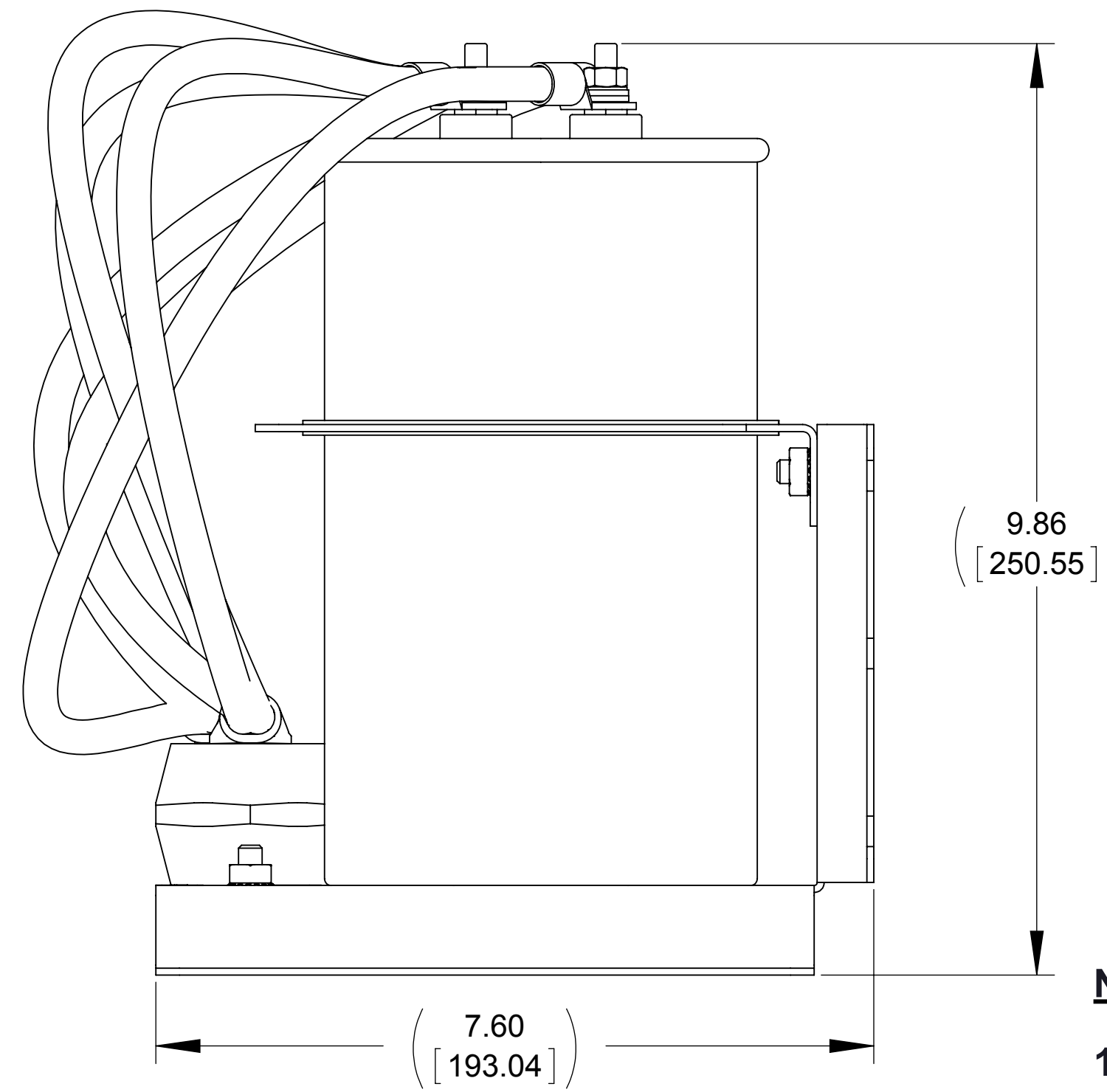
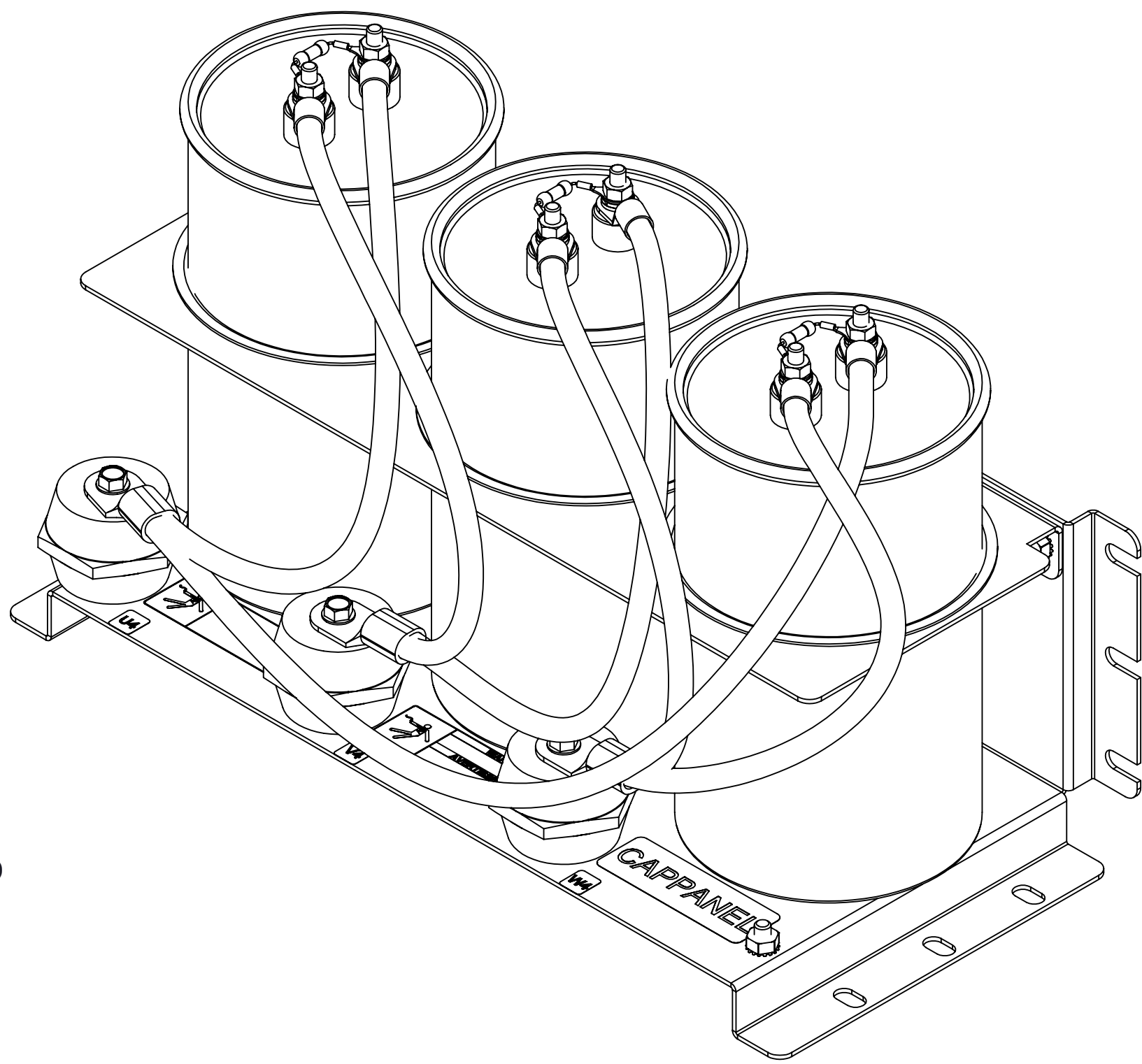
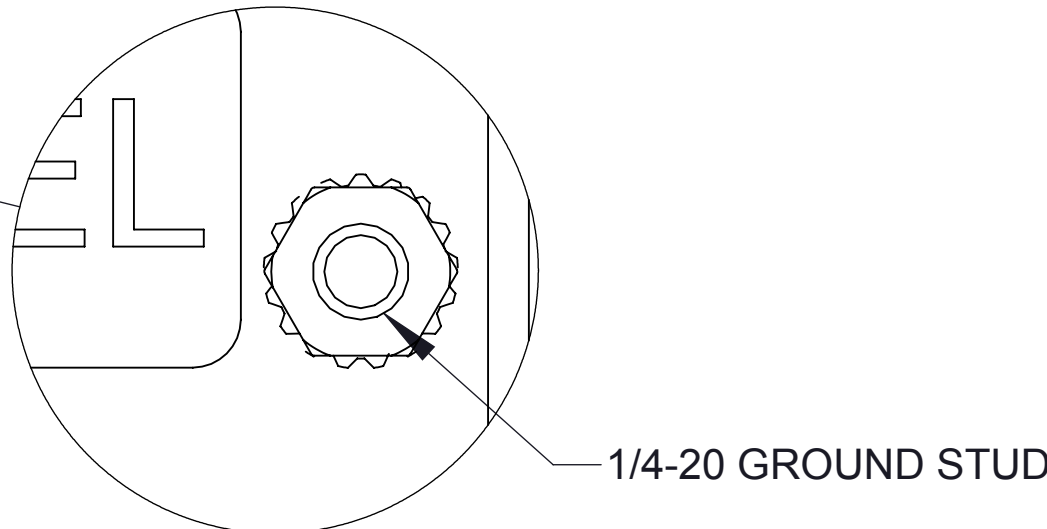


APPROX WEIGHT
(LBS.)
25


| ECO No | DESCRIPTION | REV BY | DATE |
|--------|-------------|--------|------|
| | | | |



DETAIL A
(6 PLACES)



NOTE:
1. TIGHTEN STANDOFF SCREWS TO 58 IN/LBS. TORQUE, MAX.

| | | | | | | |
|--|--|--|--|--|-----|------|
| THE COMPONENT, PART OR ASSEMBLY DESCRIBED IN THIS DOCUMENT MUST COMPLY WITH THE EU(EUROPEAN UNION) DIRECTIVE RoHS2 | | MATERIAL | | CONFIDENTIAL AND PROPRIETARY INFORMATION THIS DOCUMENT CONTAINS CONFIDENTIAL AND PROPRIETARY INFORMATION OF MTE CORPORATION AND MAY NOT BE USED, COPIED OR DISCLOSED TO OTHERS EXCEPT WITH THE AUTHORIZED WRITTEN PERMISSION OF MTE CORPORATION | | |
| | | | | | | |
| CONTAINS <0.1% OF ANY SVHC BY WEIGHT PER REACH REGULATION | | | | DESCRIPTION | | |
| UNLESS OTHERWISE SPECIFIED DIMENSIONS ARE IN INCHES [MM] TOLERANCES ARE: ANGLES: ± 1 ° 1 PLACE .X: ± .1 [2.5] 2 PLACE .XX: ± .01 [0.25] 3 PLACE .XXX: ± .005 [0.127] | |  N83 W13330 Leon Road Menomonee Falls, WI 53051 USA 800.455.4683 262.253.8200 | | 3 CAP ASSEMBLY 354.9uF DELTA CONFIGURATION | | |
| | | | | DRAWN | KV | DATE |
| | | | | CHECKED | JM | DATE |
| | | | | APPROVED | JM | DATE |
| | | | | SIZE | D | REV |
| | | | | SCALE | 2:3 | 00 |
| | | | | SHEET 1 OF 1 | | |