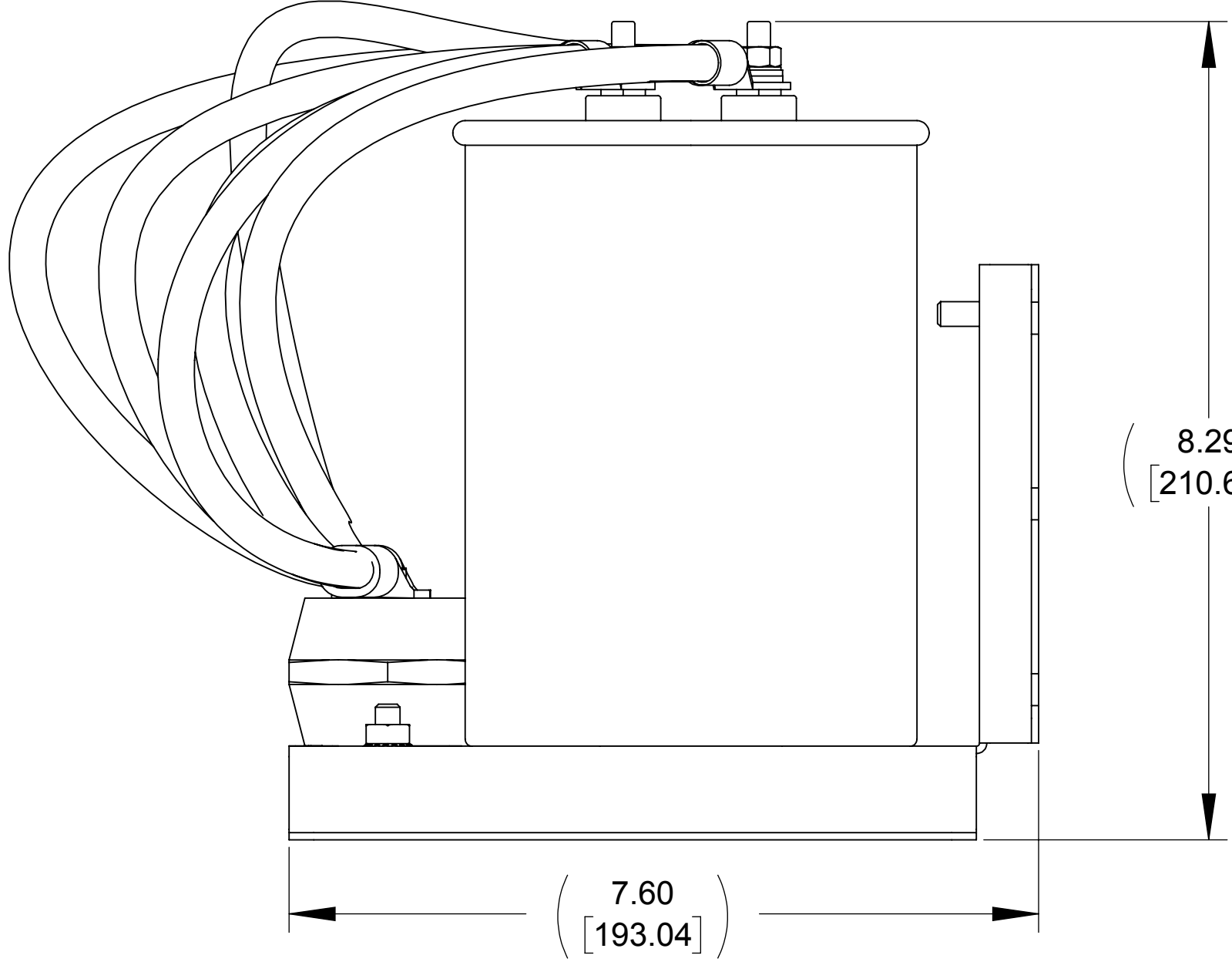
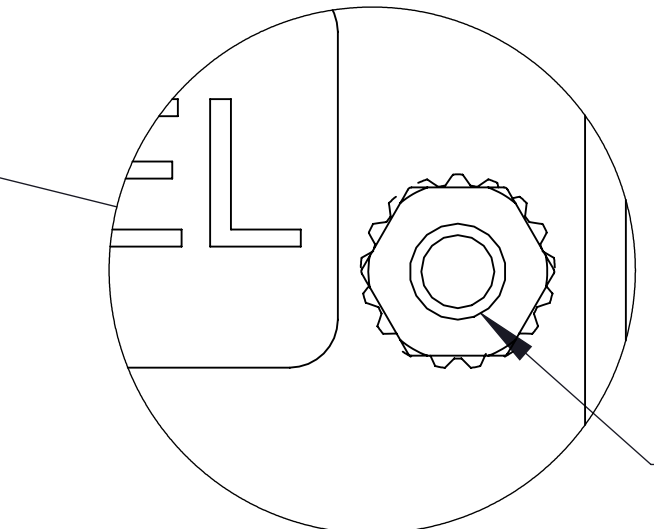
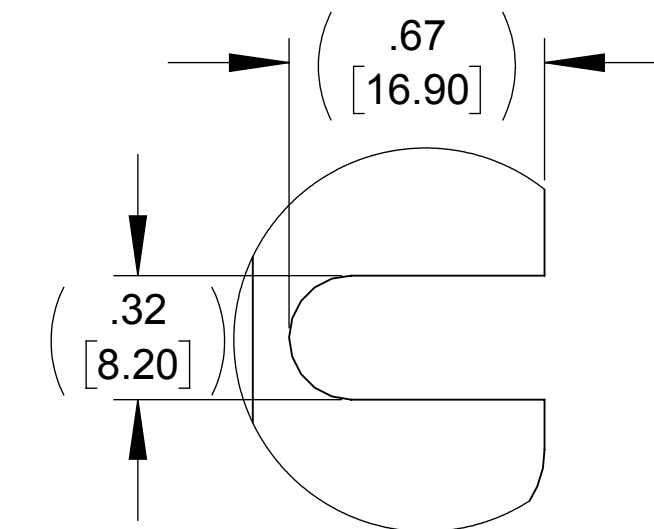
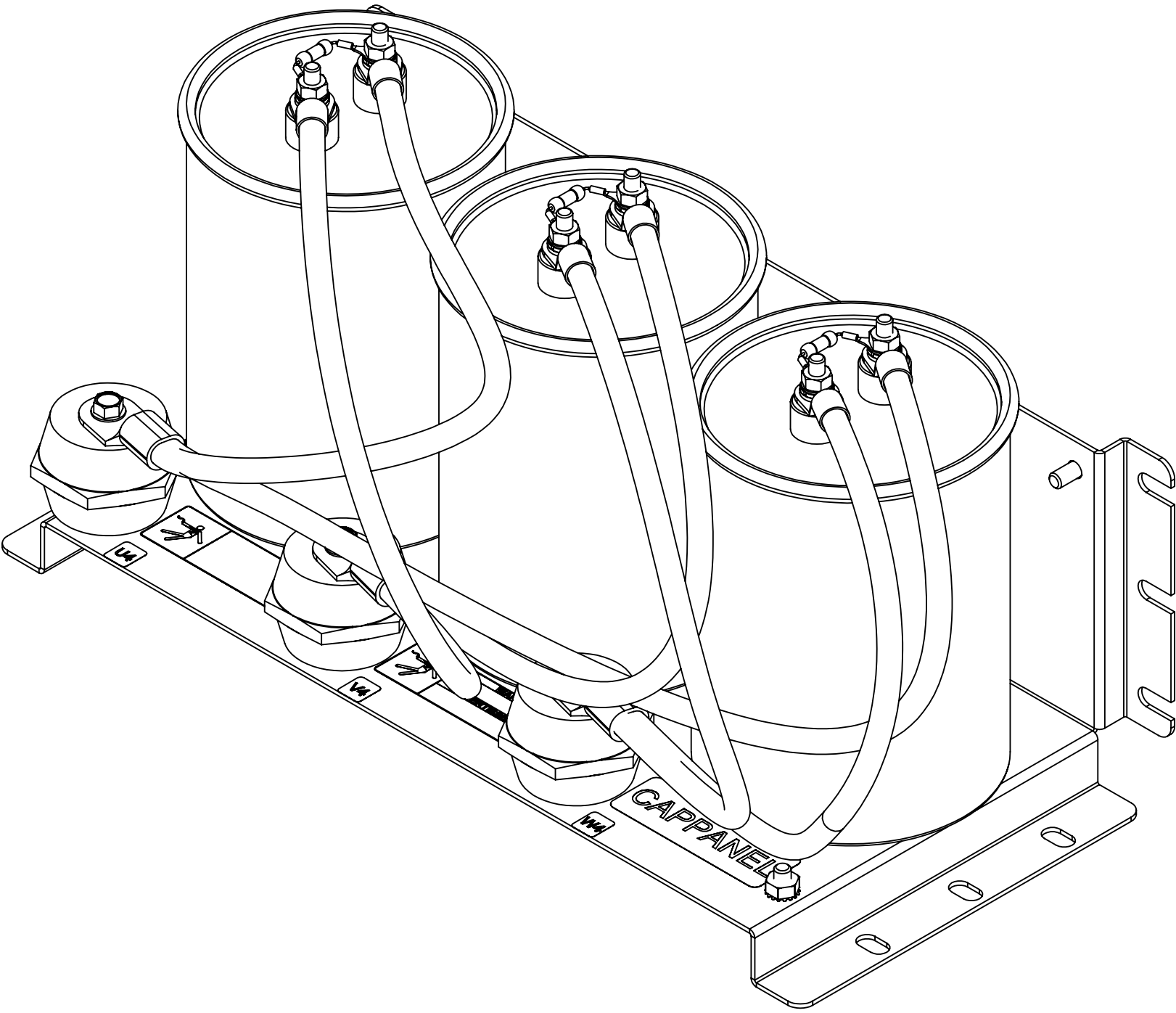



ECO No	DESCRIPTION	REV BY	DATE



NOTE:
1. TIGHTEN STANDOFF SCREWS TO 58 IN/LBS. TORQUE, MAX.

THE COMPONENT, PART OR ASSEMBLY DESCRIBED IN THIS DOCUMENT MUST COMPLY WITH THE EU(EUROPEAN UNION) DIRECTIVE RoHS2		MATERIAL		CONFIDENTIAL AND PROPRIETARY INFORMATION THIS DOCUMENT CONTAINS CONFIDENTIAL AND PROPRIETARY INFORMATION OF MTE CORPORATION AND MAY NOT BE USED, COPIED OR DISCLOSED TO OTHERS EXCEPT WITH THE AUTHORIZED WRITTEN PERMISSION OF MTE CORPORATION			
CONTAINS <0.1% OF ANY SVHC BY WEIGHT PER REACH REGULATION				DESCRIPTION			
UNLESS OTHERWISE SPECIFIED DIMENSIONS ARE IN INCHES [MM] TOLERANCES ARE: ANGLES: ± 1 ° 1 PLACE .X: ± .1 [2.5] 2 PLACE .XX: ± .01 [0.25] 3 PLACE .XXX: ± .005 [0.127]		 <small>N 83 W13330 Leon Road Menomonee Falls, WI 53051 USA 800.455-4683 262.253.8200</small>		DRAWN KV		DATE 10/21/15	
				CHECKED JM		DATE 11/06/15	
				APPROVED JM		DATE 11/06/15	
				SIZE D		DWG No. CD CAPPANEL-608C	
				SCALE 2:3		REV 00	
				SHEET 1 OF 1			