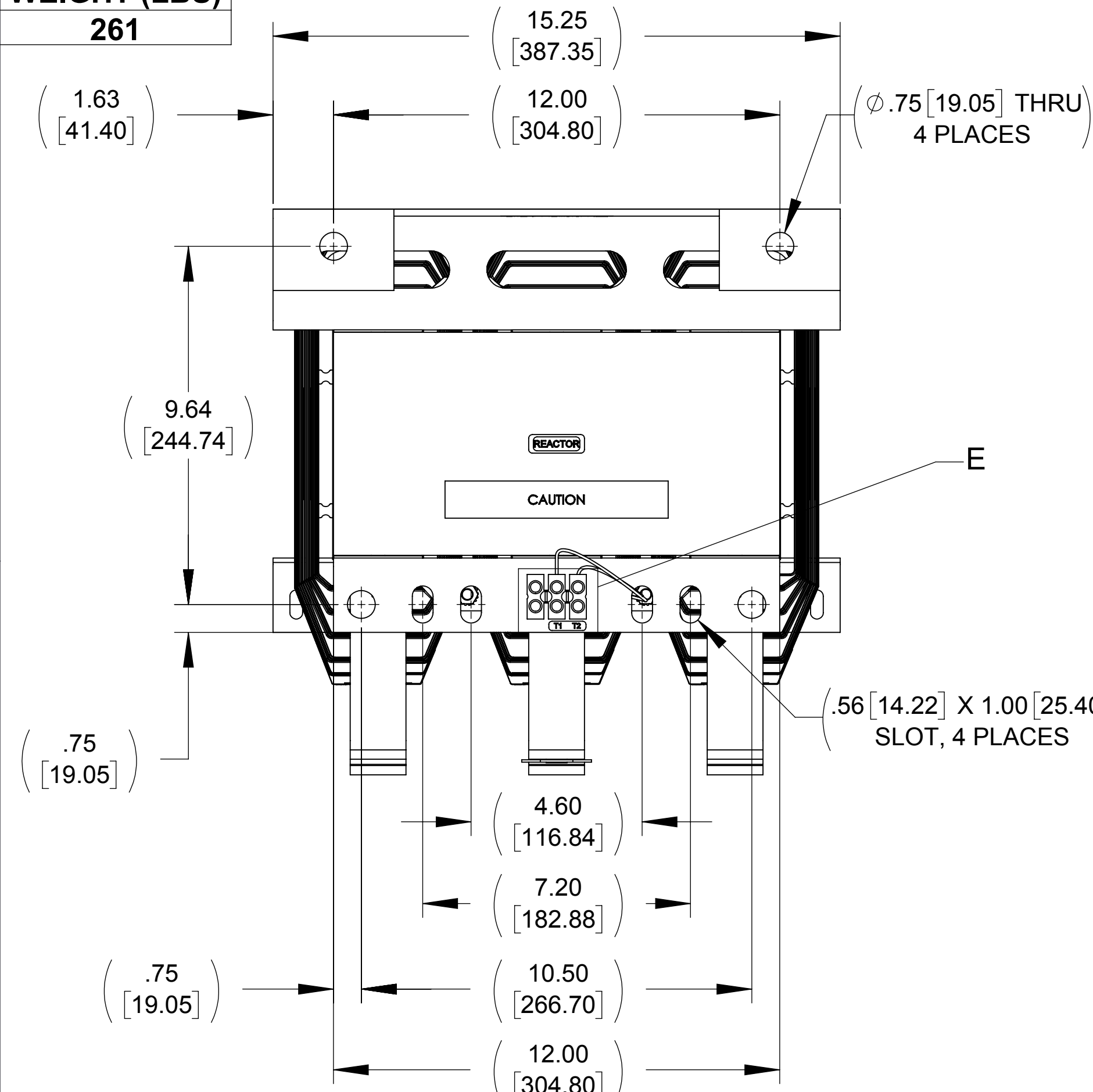
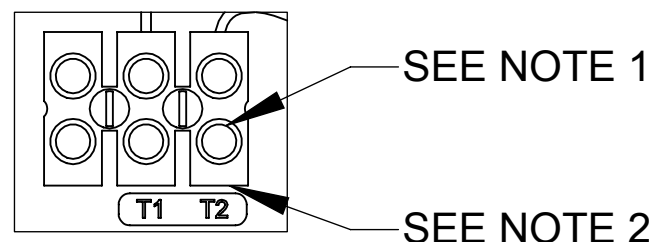


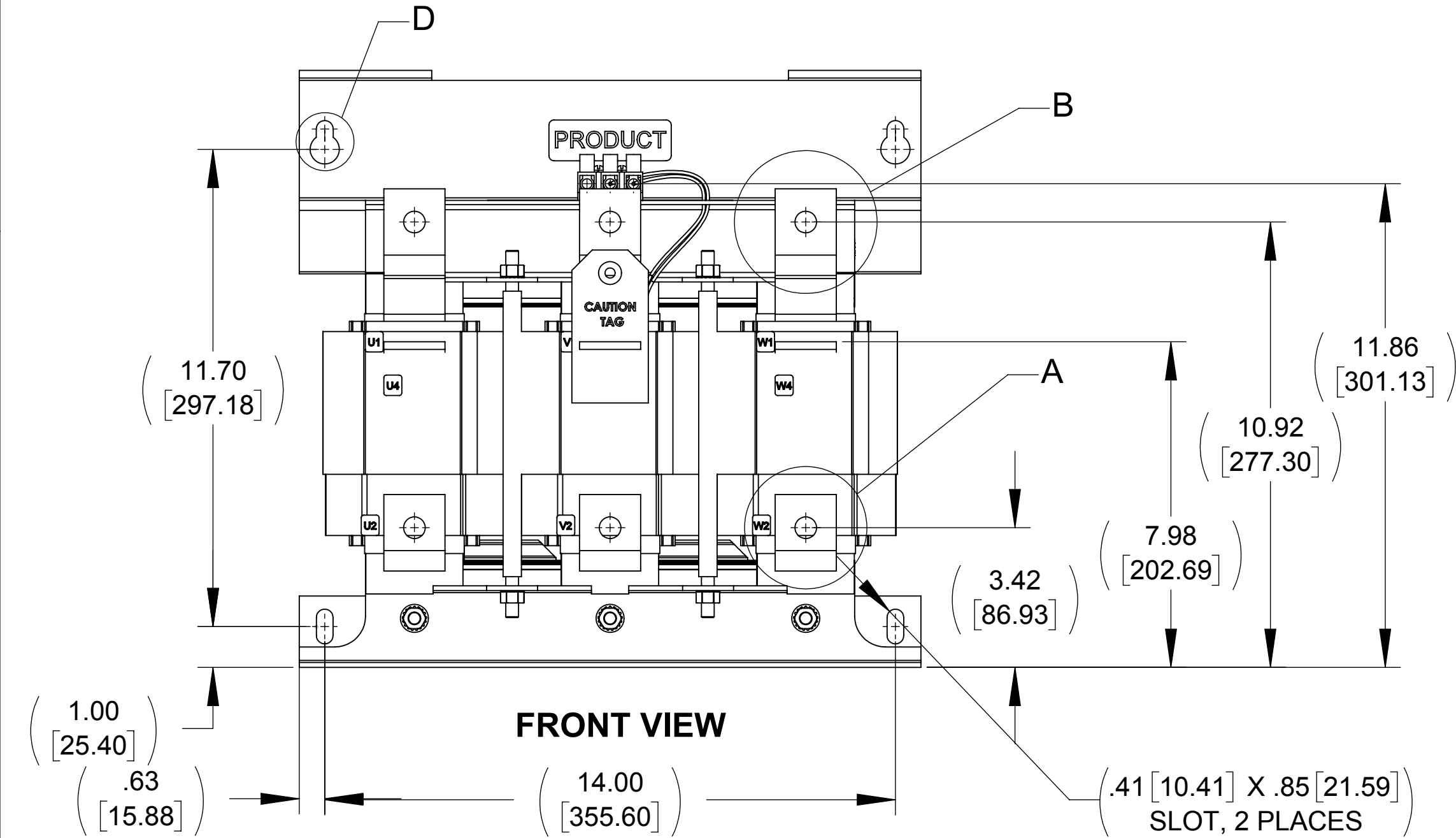
WEIGHT (LBS)
261



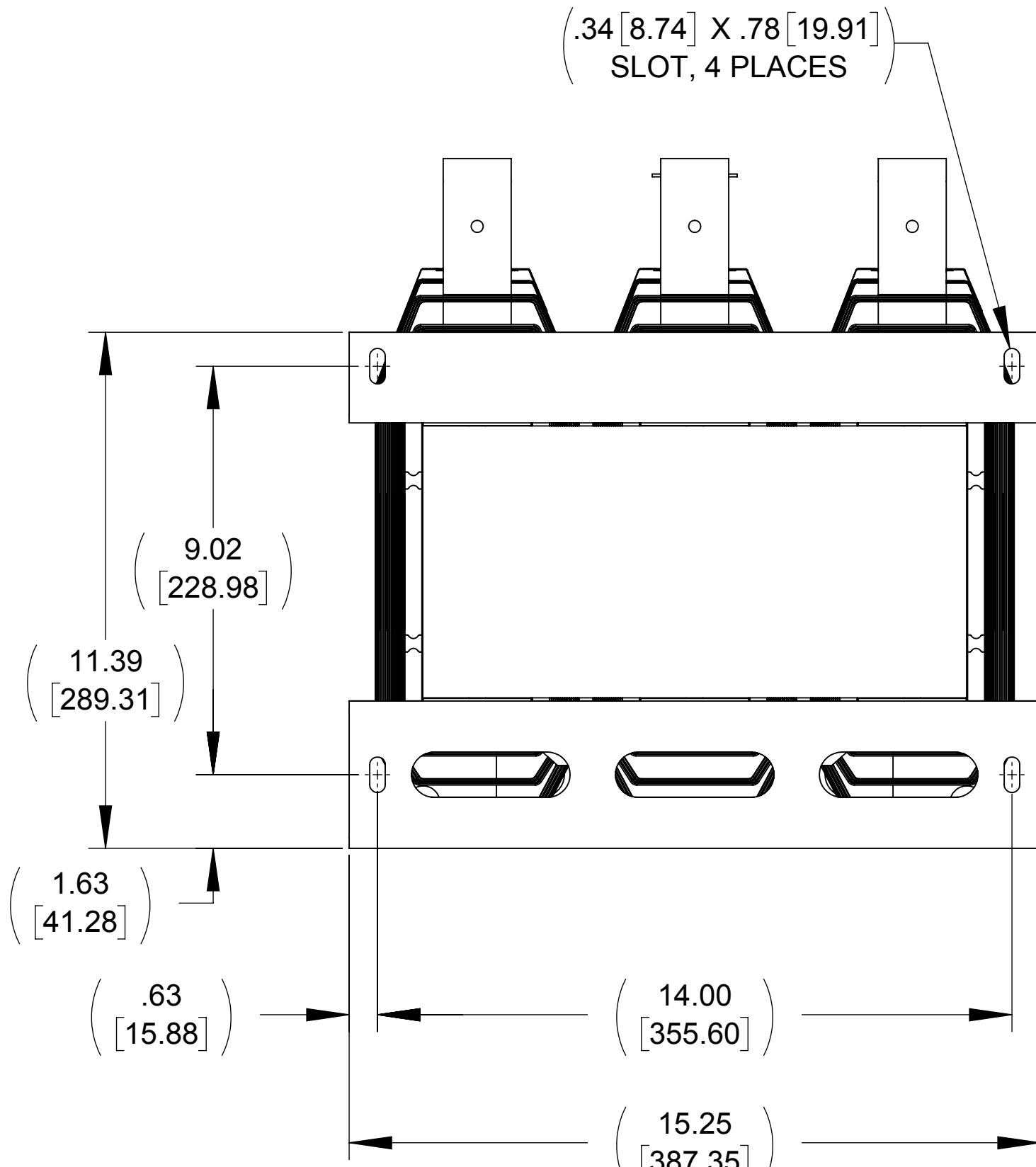
TOP VIEW



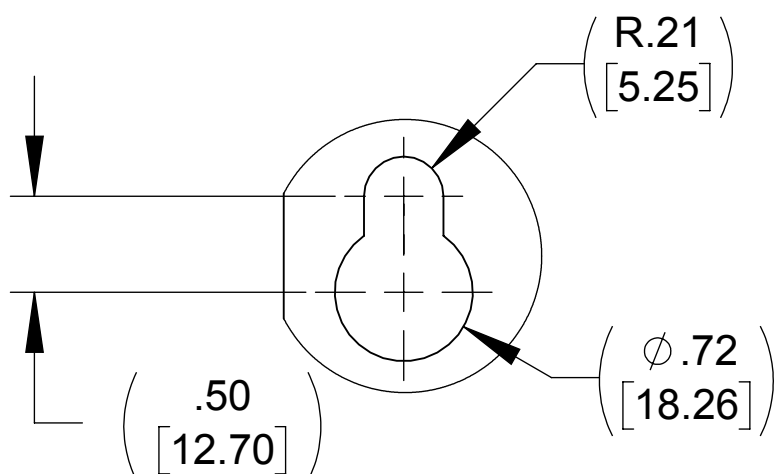
DETAIL E
CUSTOMER CONNECTION
DETAIL VIEW (THERMAL)



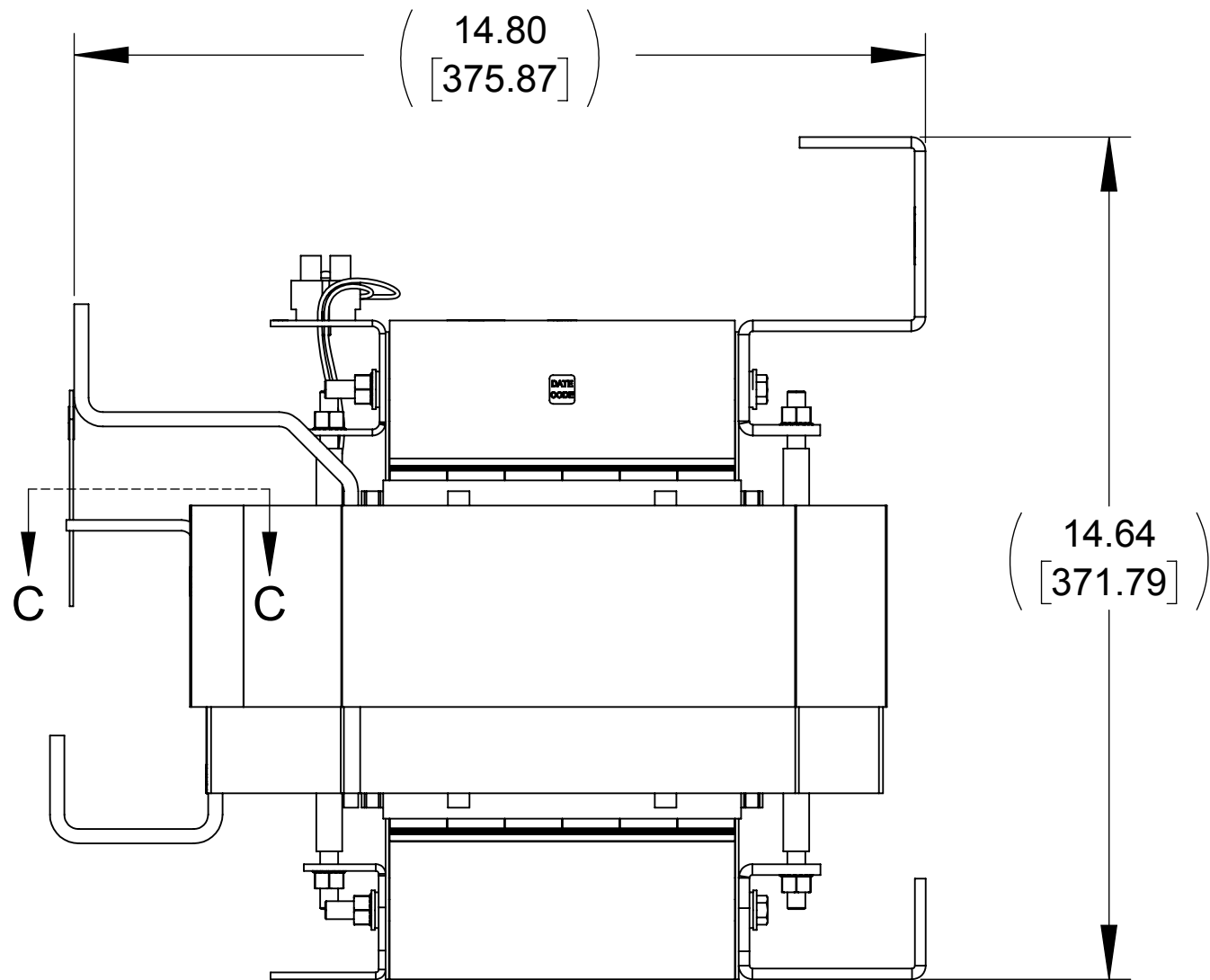
FRONT VIEW



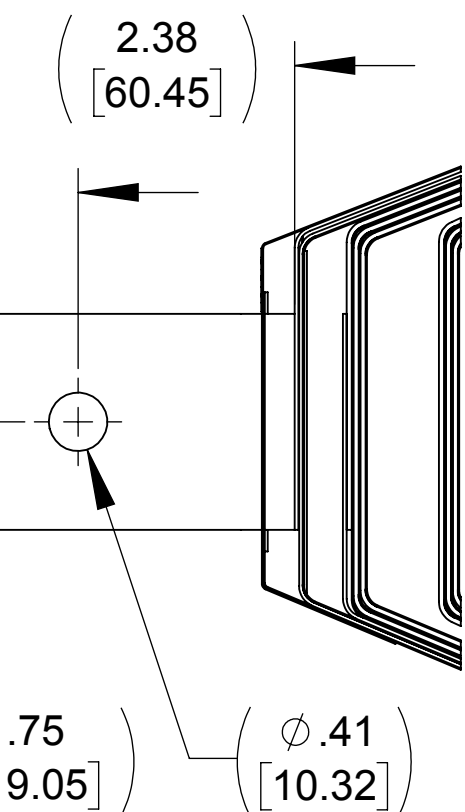
BOTTOM VIEW



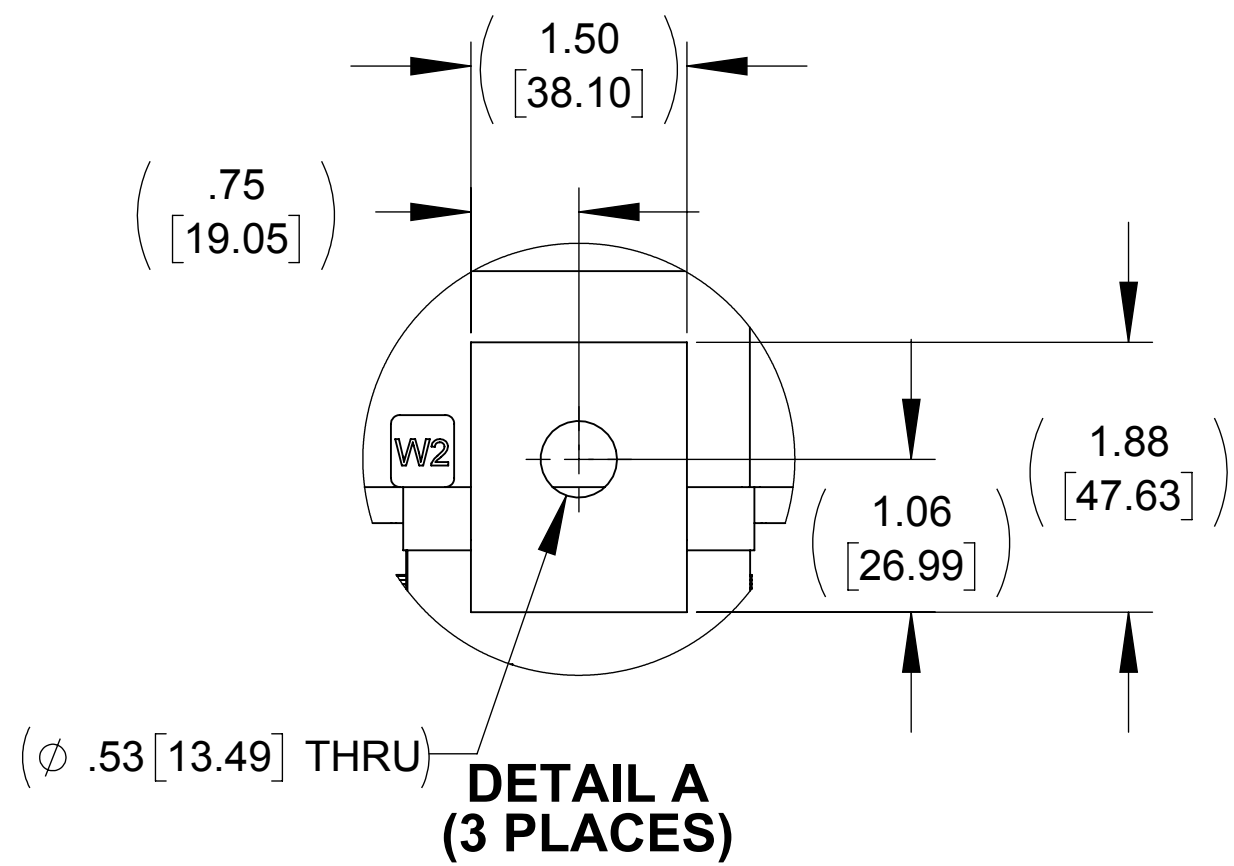
DETAIL D
(2 PLACES)



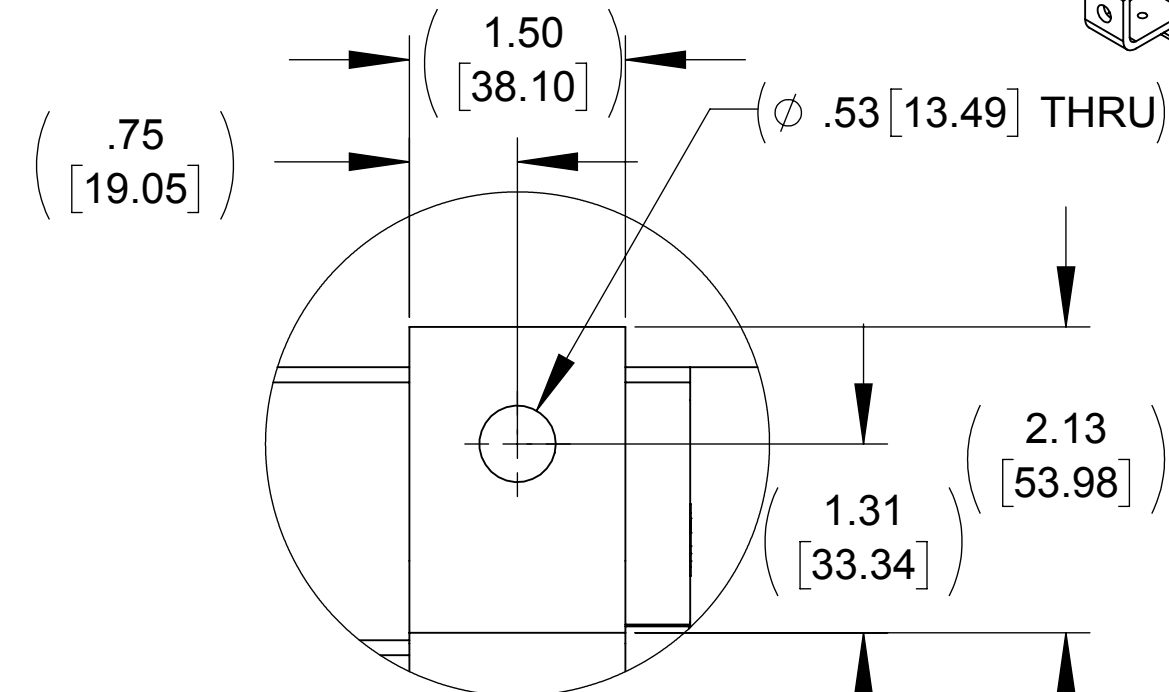
RIGHT SIDE VIEW



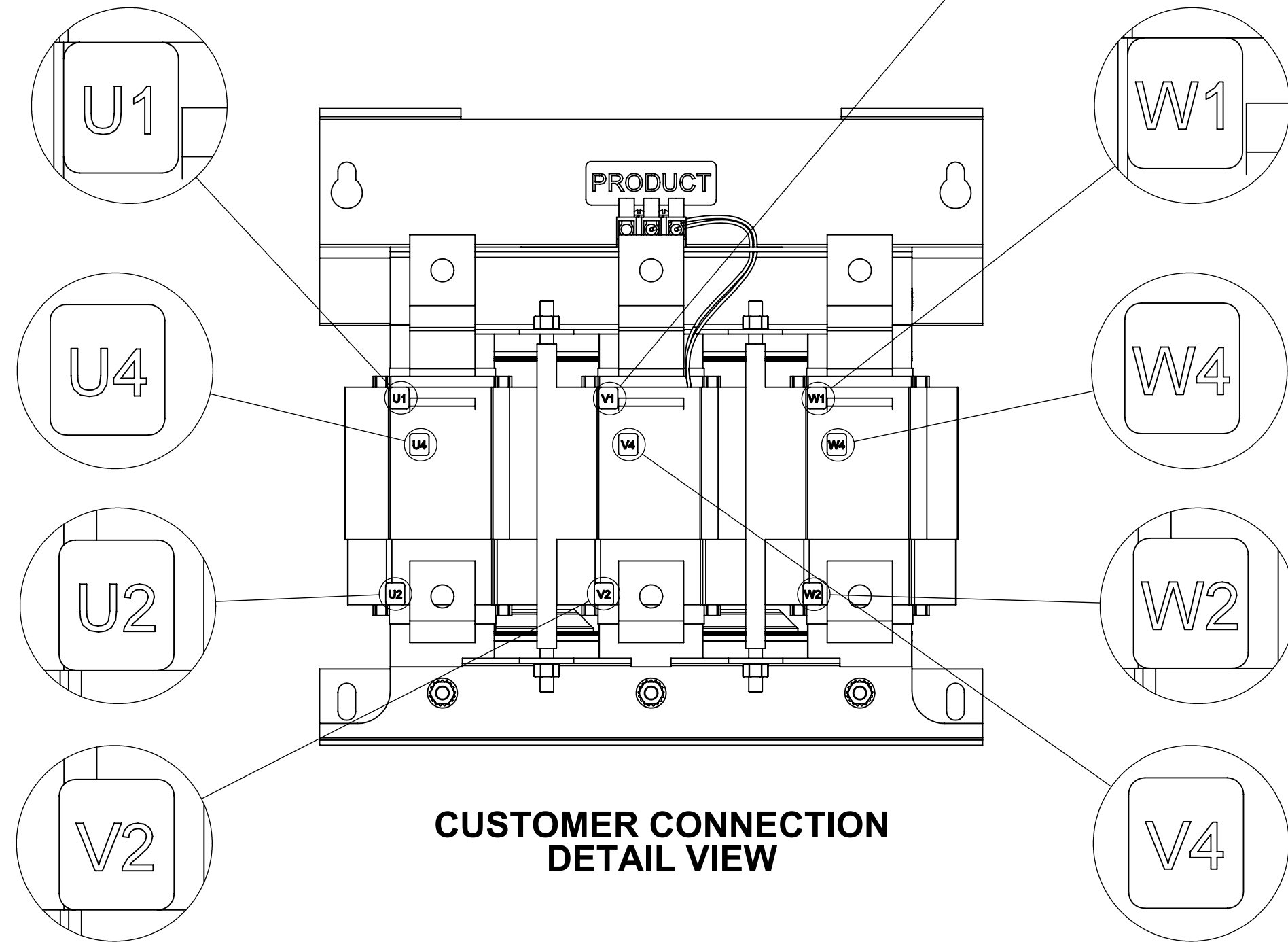
SECTION C-C
(3 PLACES)



DETAIL A
(3 PLACES)



DETAIL B
(3 PLACES)



CUSTOMER CONNECTION
DETAIL VIEW

- NOTES:
1. TIGHTEN TERMINAL BLOCK SCREWS TO 16 IN/LBS. TORQUE.
2. TERMINAL WIRE SIZE: 4-14 AWG.
3. FILTER INCLUDES: CAPPANEL-623C (QTY. 1).

THE COMPONENT, PART OR ASSEMBLY DESCRIBED IN THIS DOCUMENT MUST COMPLY WITH THE EU (EUROPEAN UNION) DIRECTIVE RoHS2		MATERIAL		CONFIDENTIAL AND PROPRIETARY INFORMATION THIS DOCUMENT CONTAINS CONFIDENTIAL AND PROPRIETARY INFORMATION OF MTE CORPORATION AND MAY NOT BE USED, COPIED OR DISCLOSED TO OTHERS EXCEPT WITH THE AUTHORIZED WRITTEN PERMISSION OF MTE CORPORATION	
CONTAINS <0.1% OF ANY SVHC BY WEIGHT PER REACH REGULATION				DESCRIPTION	
UNLESS OTHERWISE SPECIFIED DIMENSIONS ARE IN INCHES [MM] TOLERANCES ARE: ANGLES: $\pm 1^\circ$ 1 PLACE .X: $\pm .1$ [2.5] 2 PLACE .XX: $\pm .03$ [0.76] 3 PLACE .XXX: $\pm .010$ [0.254]		DRAWN MN DATE 08/29/13		SIZE D DWG No. CD SWGM0305D	
		CHECKED JM DATE 02/15/17		REV 06	
		APPROVED JM DATE 02/15/17		SCALE 1:3	
				SHEET 1 OF 1	

ECO No	DESCRIPTION	REV BY	DATE
M9770	CHANGED CAPPANEL-607 TO 623C	RR	02/14/17