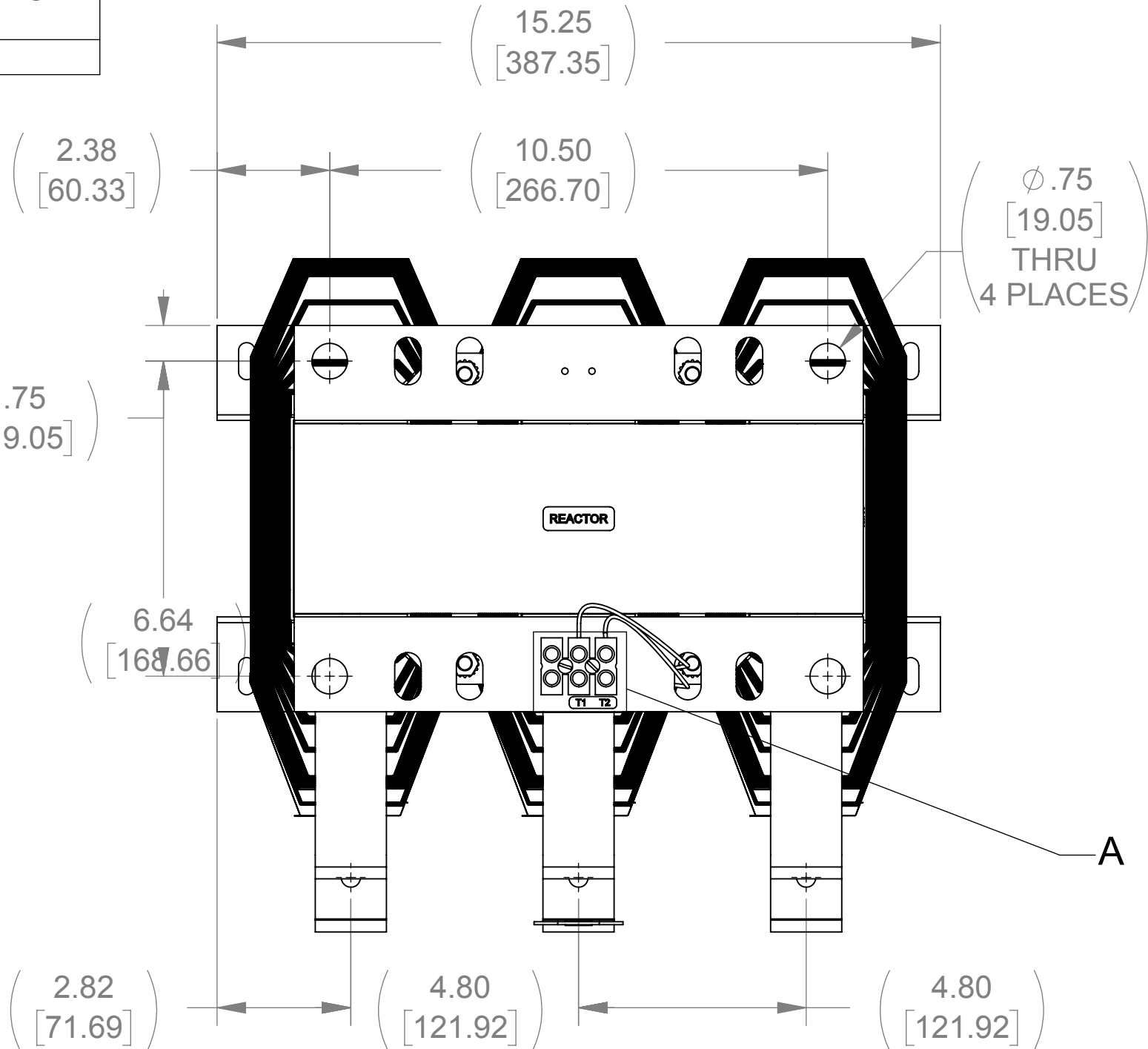
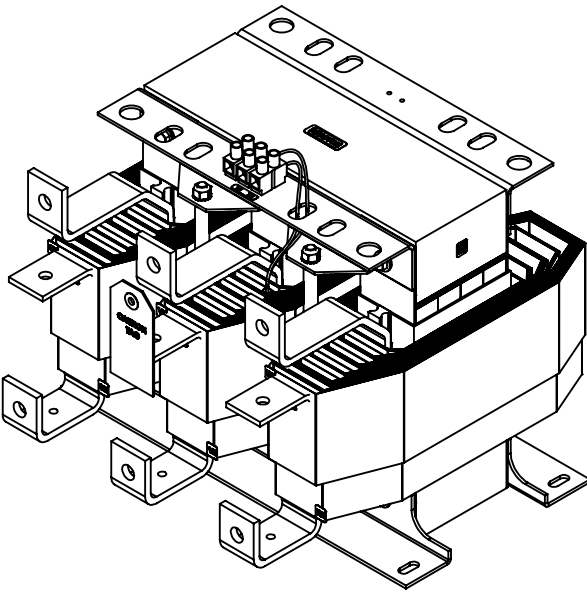
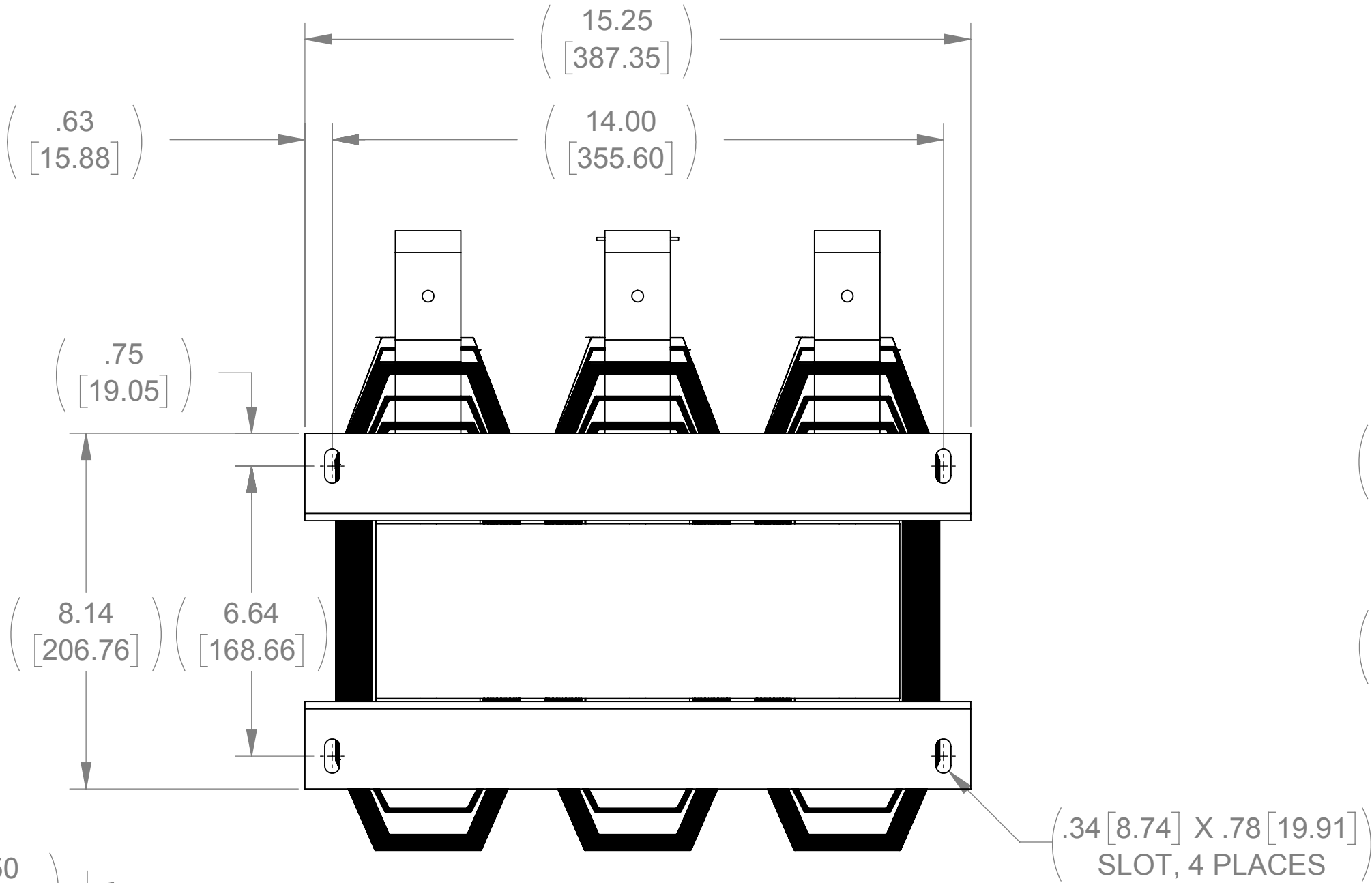


APPROX. WEIGHT
(LBS)
195

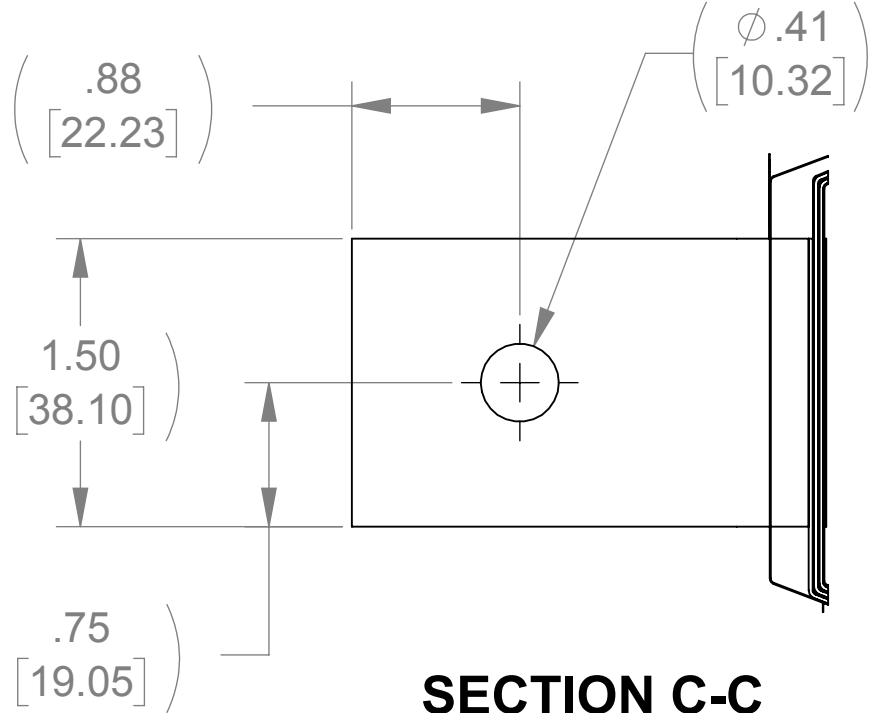
ECO No	DESCRIPTION	REV BY	DATE
M11216	REPLACE CAPPANEL-614C W/ CAP-533SW	MN	09/13/18



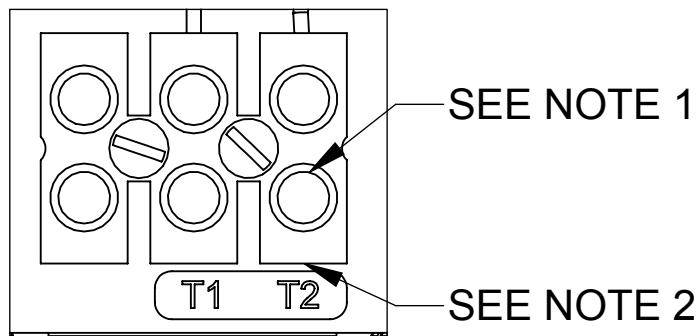
TOP VIEW



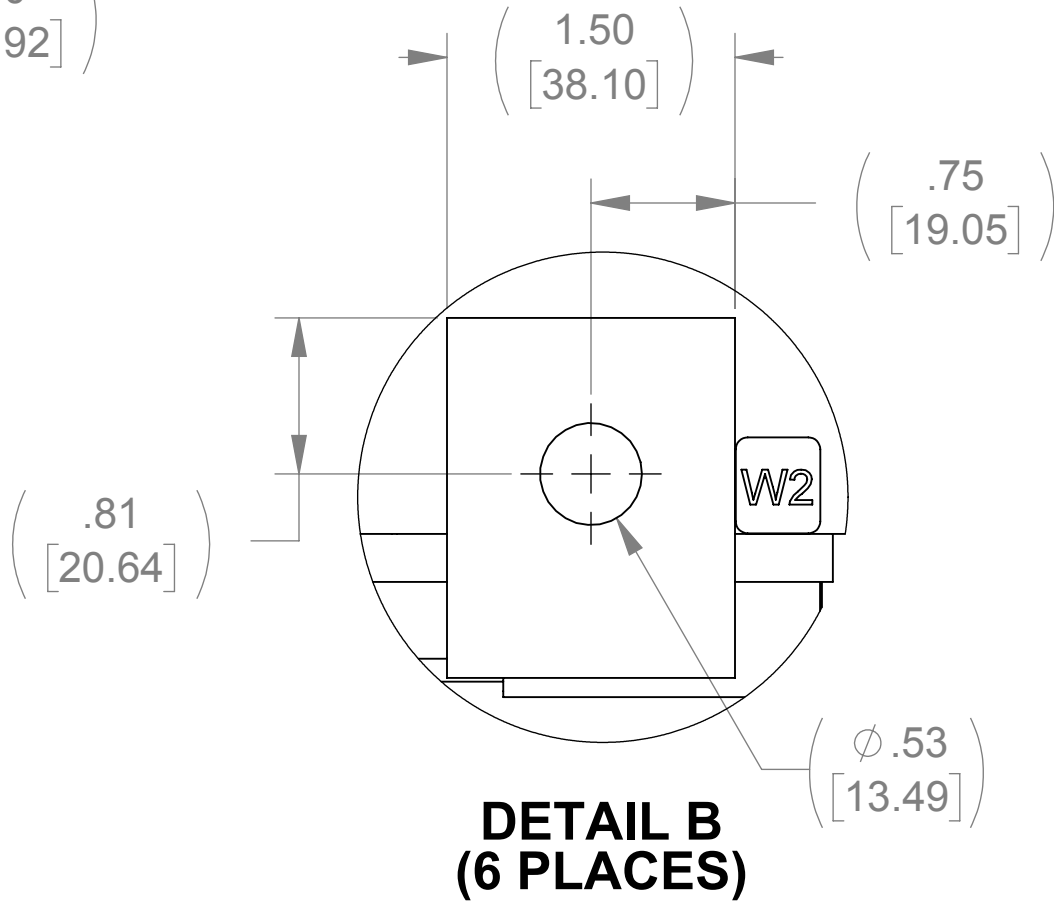
BOTTOM VIEW



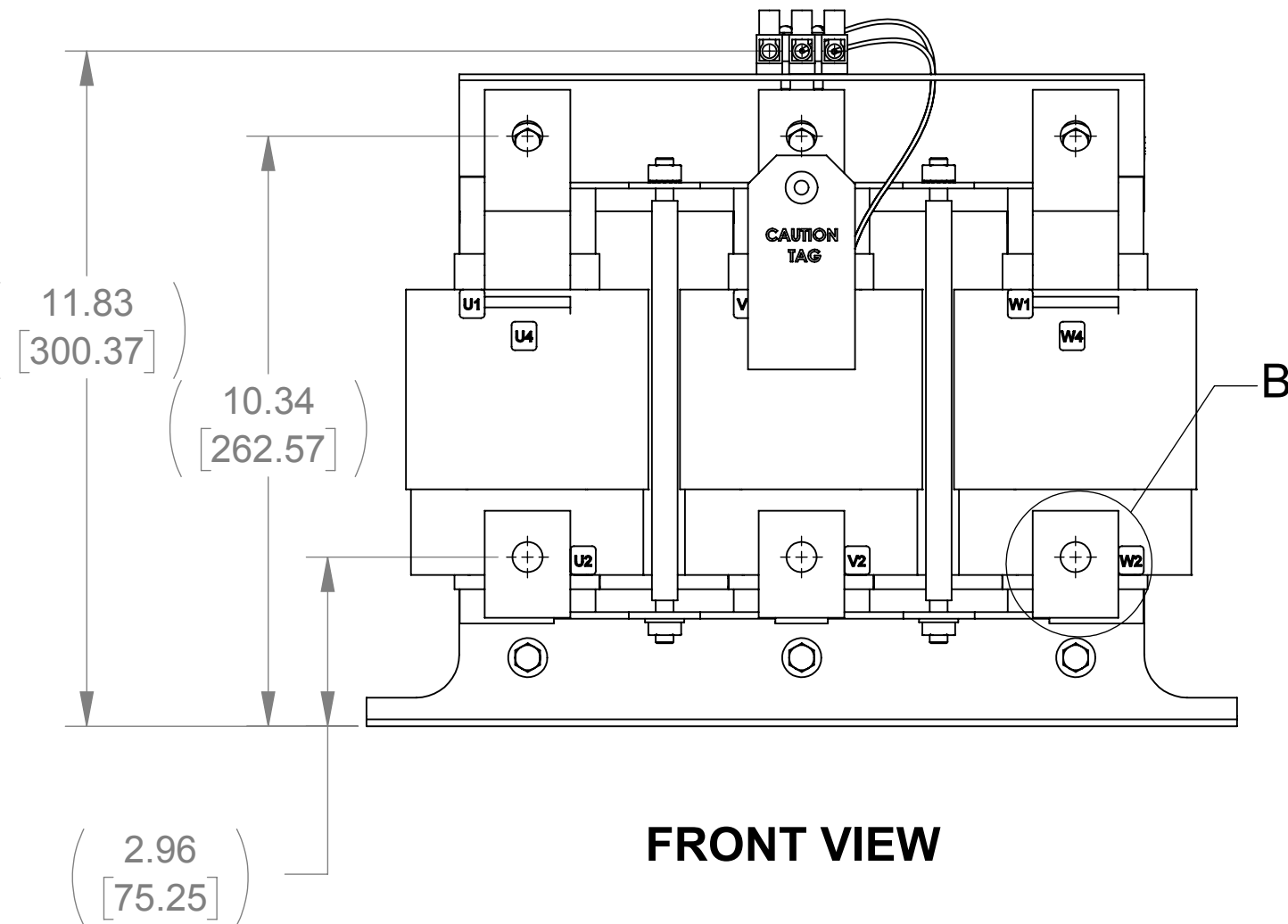
SECTION C-C
(3 PLACES)



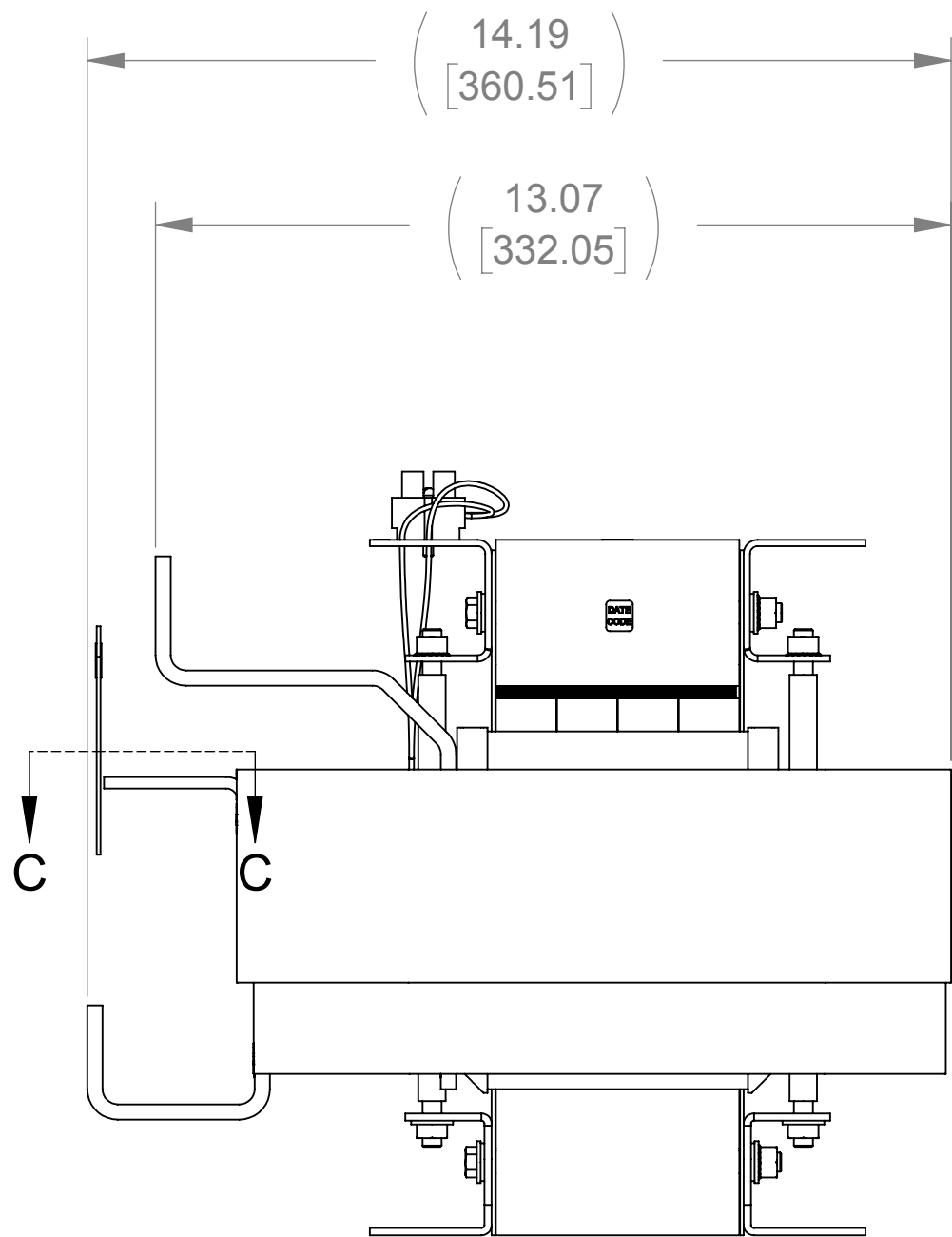
DETAIL A
CUSTOMER CONNECTION
DETAIL VIEW (THERMAL)



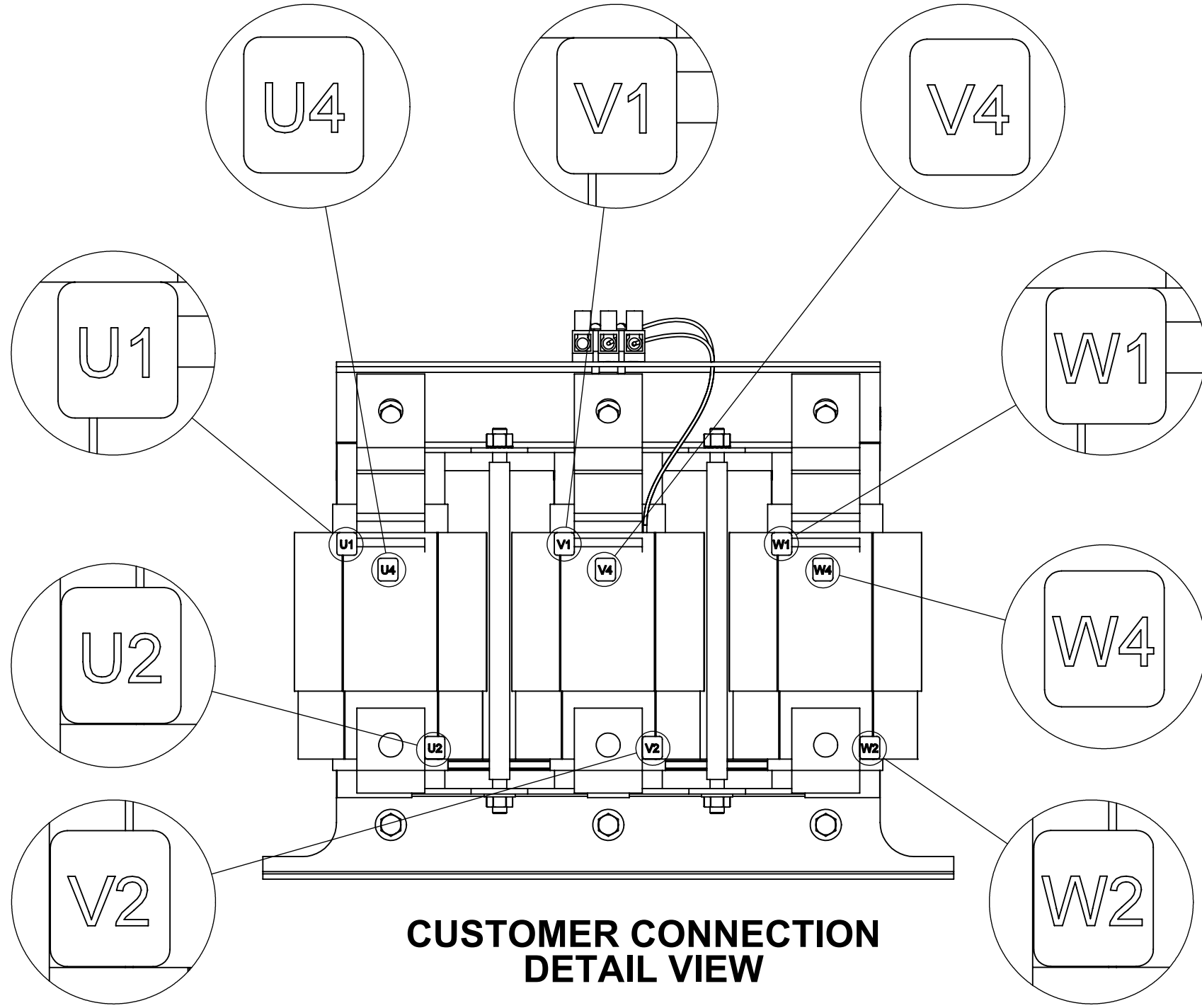
DETAIL B
(6 PLACES)



FRONT VIEW




SIDE VIEW



CUSTOMER CONNECTION
DETAIL VIEW

NOTES:

1. TIGHTEN TERMINAL BLOCK SCREWS TO 16 IN/LBS. TORQUE.
2. TERMINAL WIRE SIZE: 4-14 AWG.
3. FILTER INCLUDES: CAP-533SW (QTY. 1).

THE COMPONENT, PART OR ASSEMBLY DESCRIBED IN THIS DOCUMENT MUST COMPLY WITH THE EU(EUROPEAN UNION) DIRECTIVE RoHS2		MATERIAL		CONFIDENTIAL AND PROPRIETARY INFORMATION THIS DOCUMENT CONTAINS CONFIDENTIAL AND PROPRIETARY INFORMATION OF MTE CORPORATION AND MAY NOT BE USED, COPIED OR DISCLOSED TO OTHERS EXCEPT WITH THE AUTHORIZED WRITTEN PERMISSION OF MTE CORPORATION			
CONTAINS <0.1% OF ANY SVHC BY WEIGHT PER REACH REGULATION				DESCRIPTION			
UNLESS OTHERWISE SPECIFIED DIMENSIONS ARE IN INCHES [MM] TOLERANCES ARE: ANGLES: ± 1 ° 1 PLACE .X: ± .1 [2.5] 2 PLACE .XX: ± .01 [0.25] 3 PLACE .XXX: ± .005 [0.127]				DRAWN		DATE	
				JT		06/22/16	
				CHECKED		DATE	
				MN		09/13/18	
				APPROVED		DATE	
				TL		10/09/18	
		N83 W13330 Leon Road Menomonee Falls, WI 53051 USA 800.455-4883 262.253.8200		SIZE		DWG No.	
				D		CD SWGM0160E	
				SCALE		REV	
				1:3		00	
				SHEET 1 OF 1			