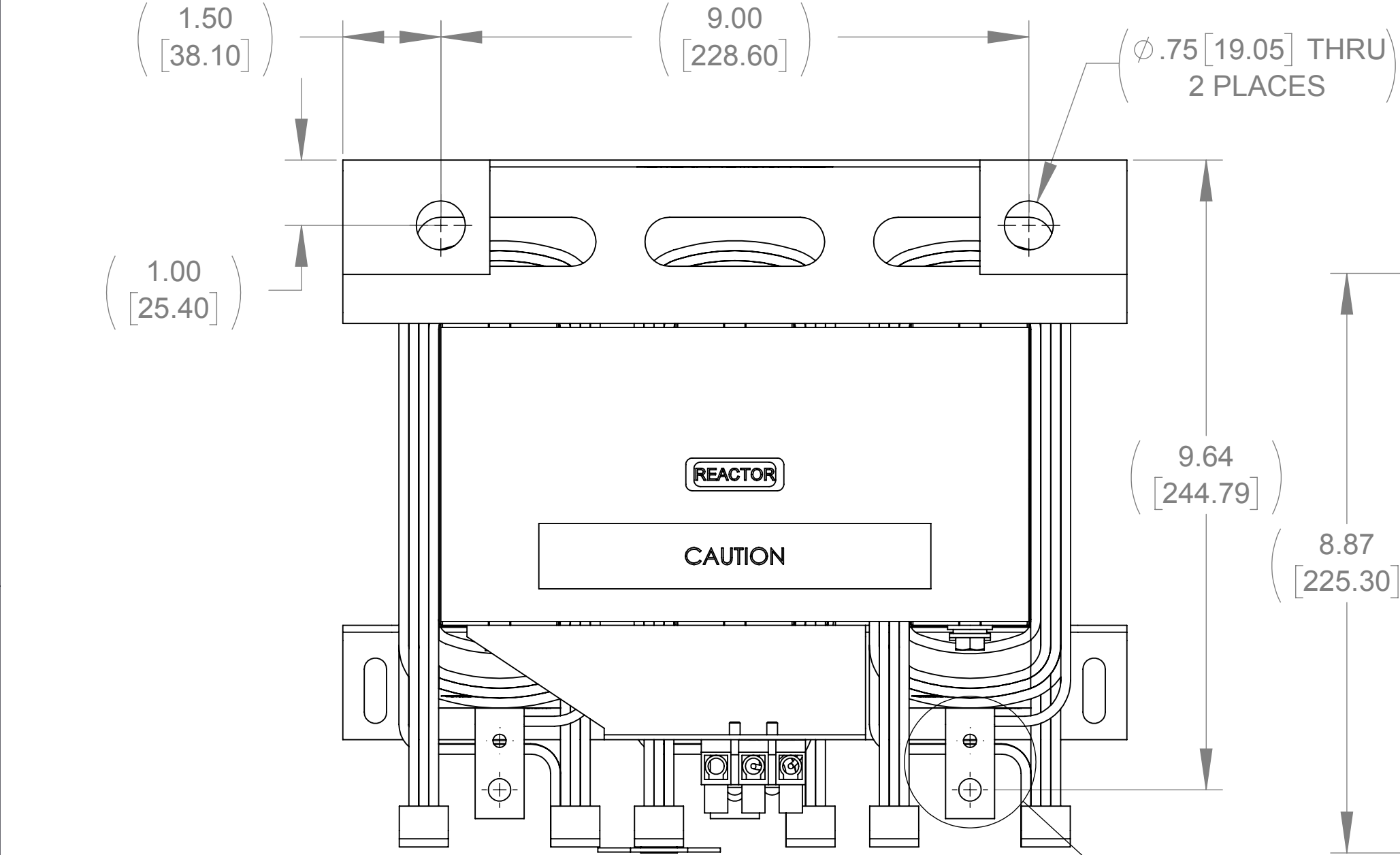
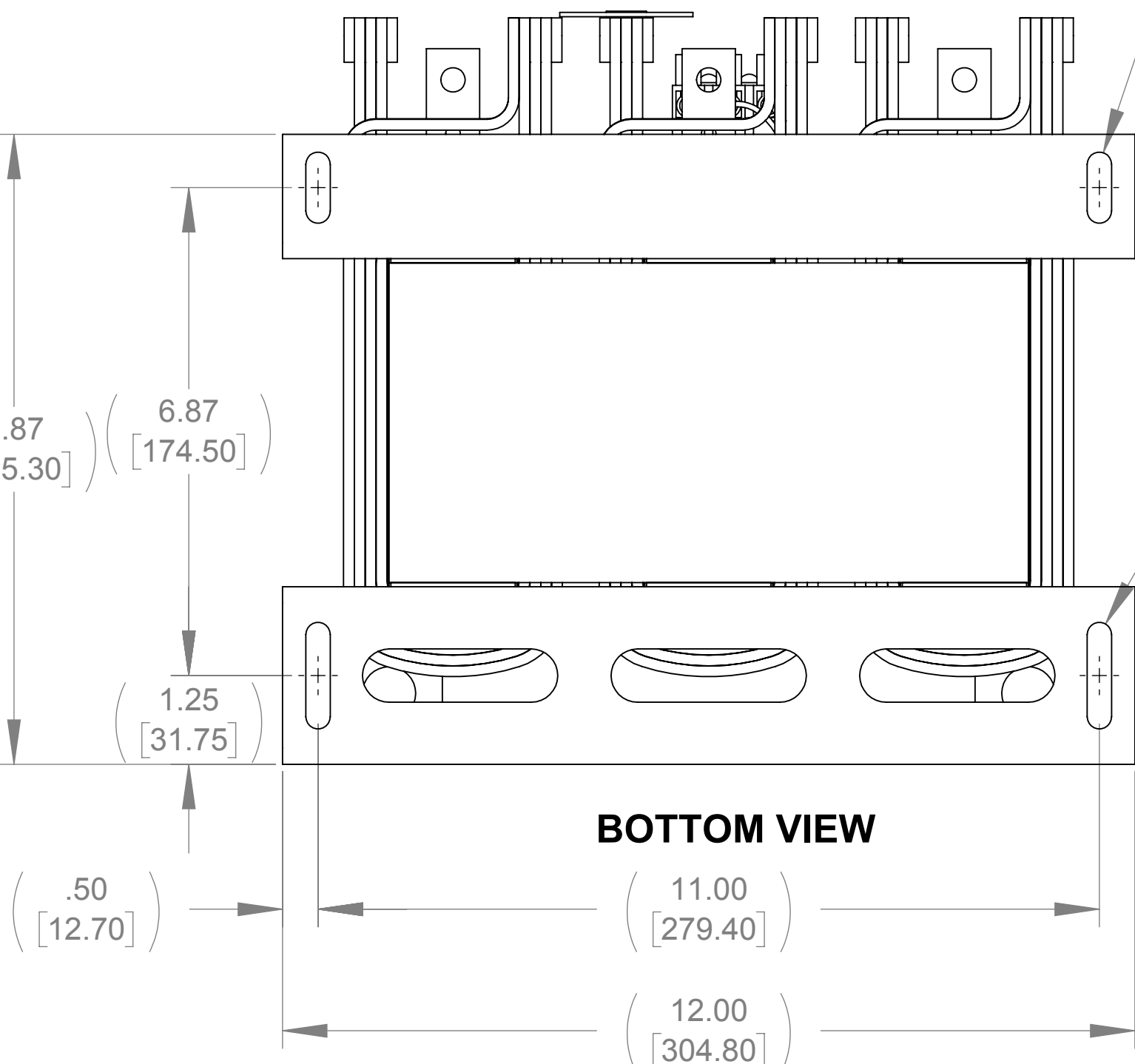


APPROX. WEIGHT
(LBS)
106

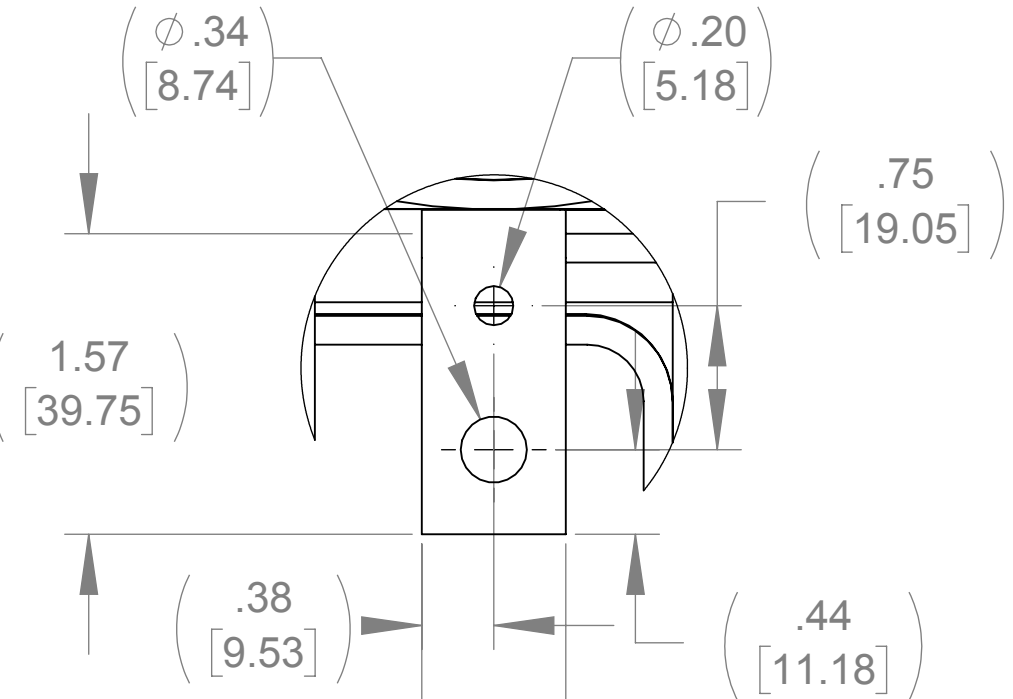


TOP VIEW

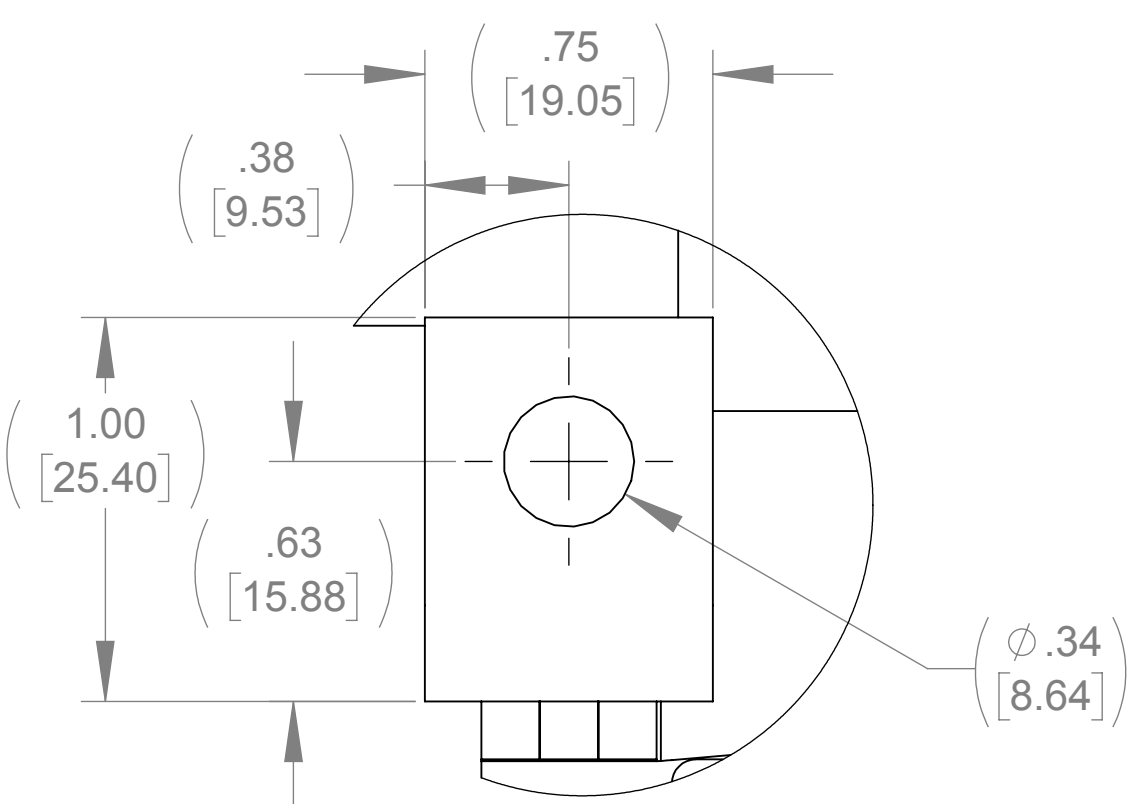


BOTTOM VIEW

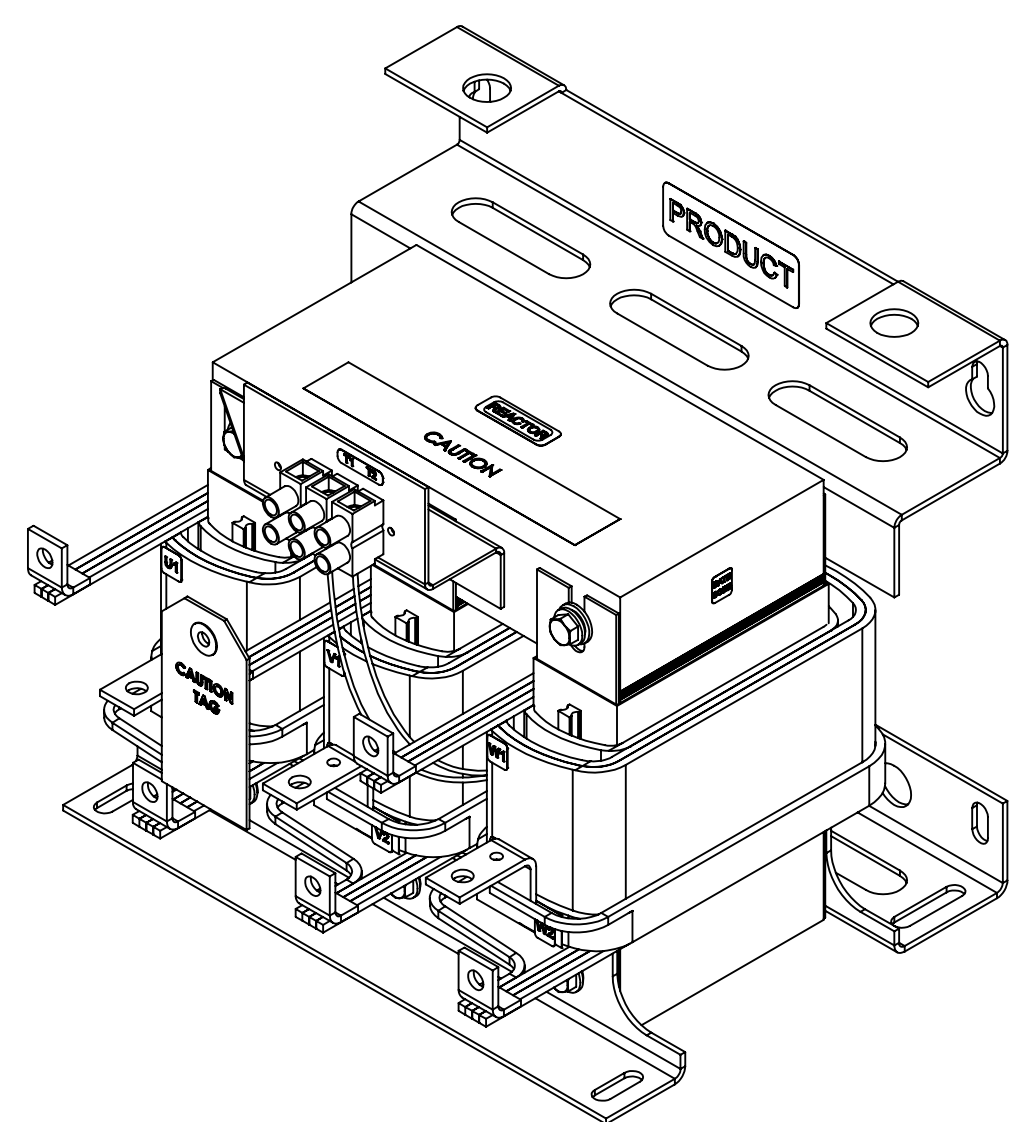
.34 [8.74] X 1.00 [25.40]
SLOT, 2 PLACES



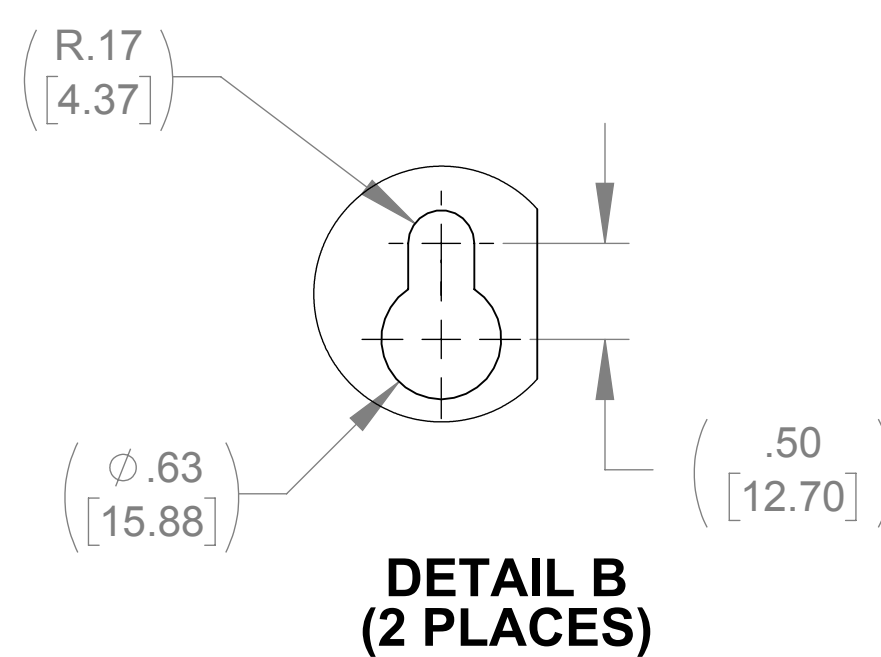
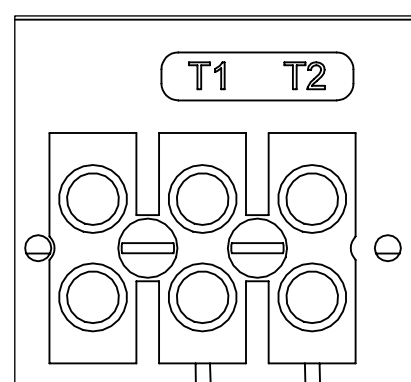
DETAIL C
(3 PLACES)



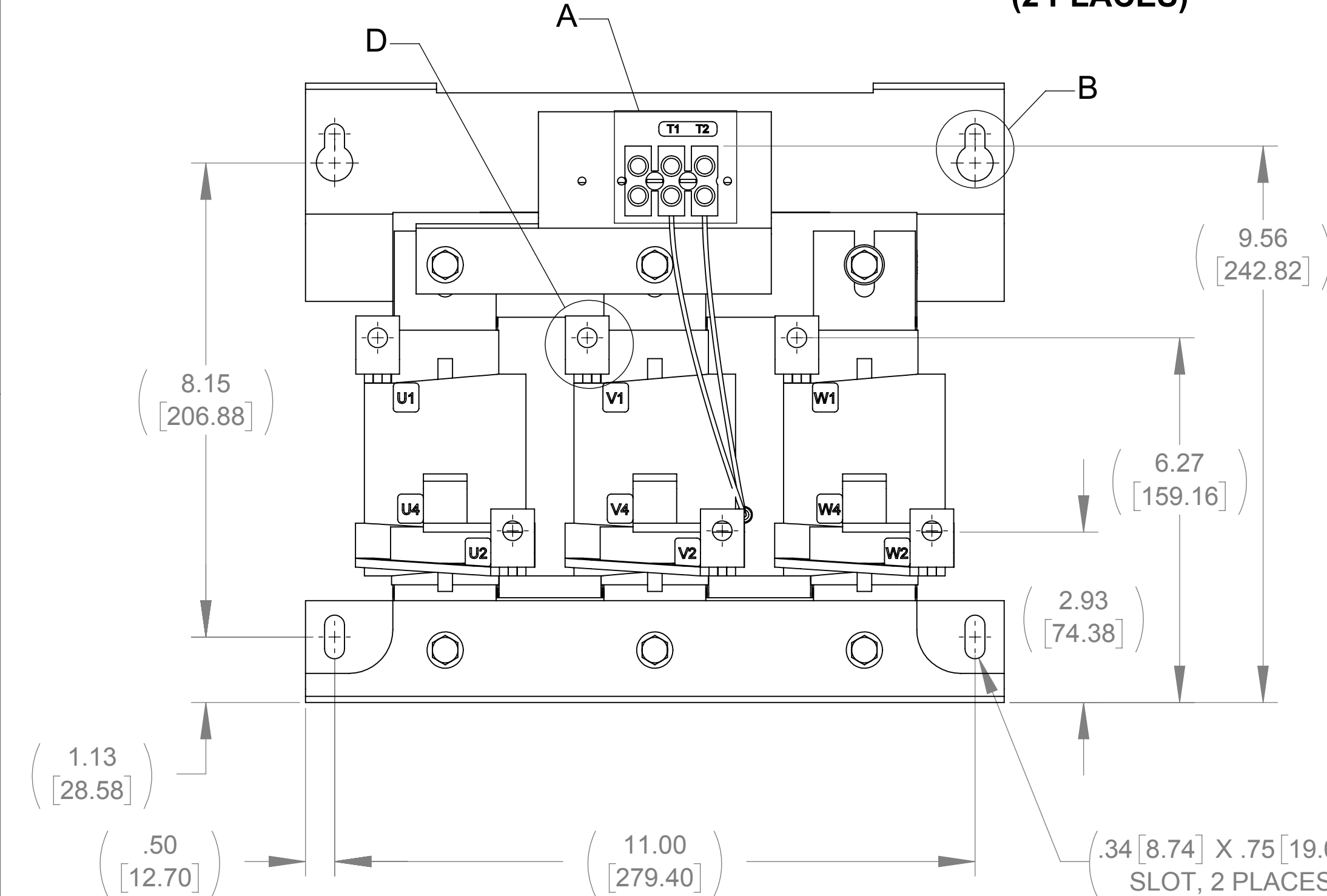
DETAIL D
(6 PLACES)



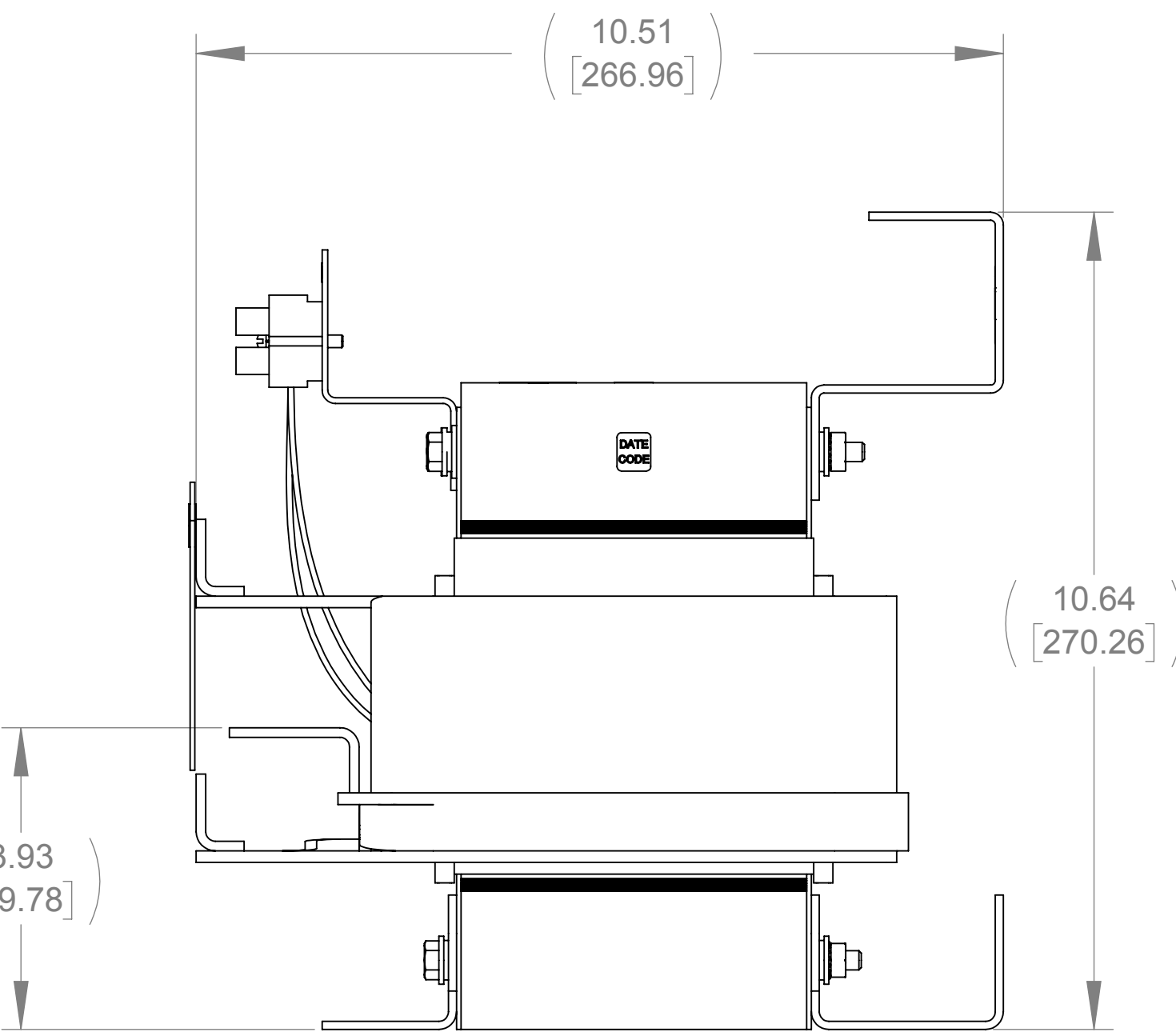
DETAIL A
CUSTOMER CONNECTION
DETAIL VIEW (THERMAL)



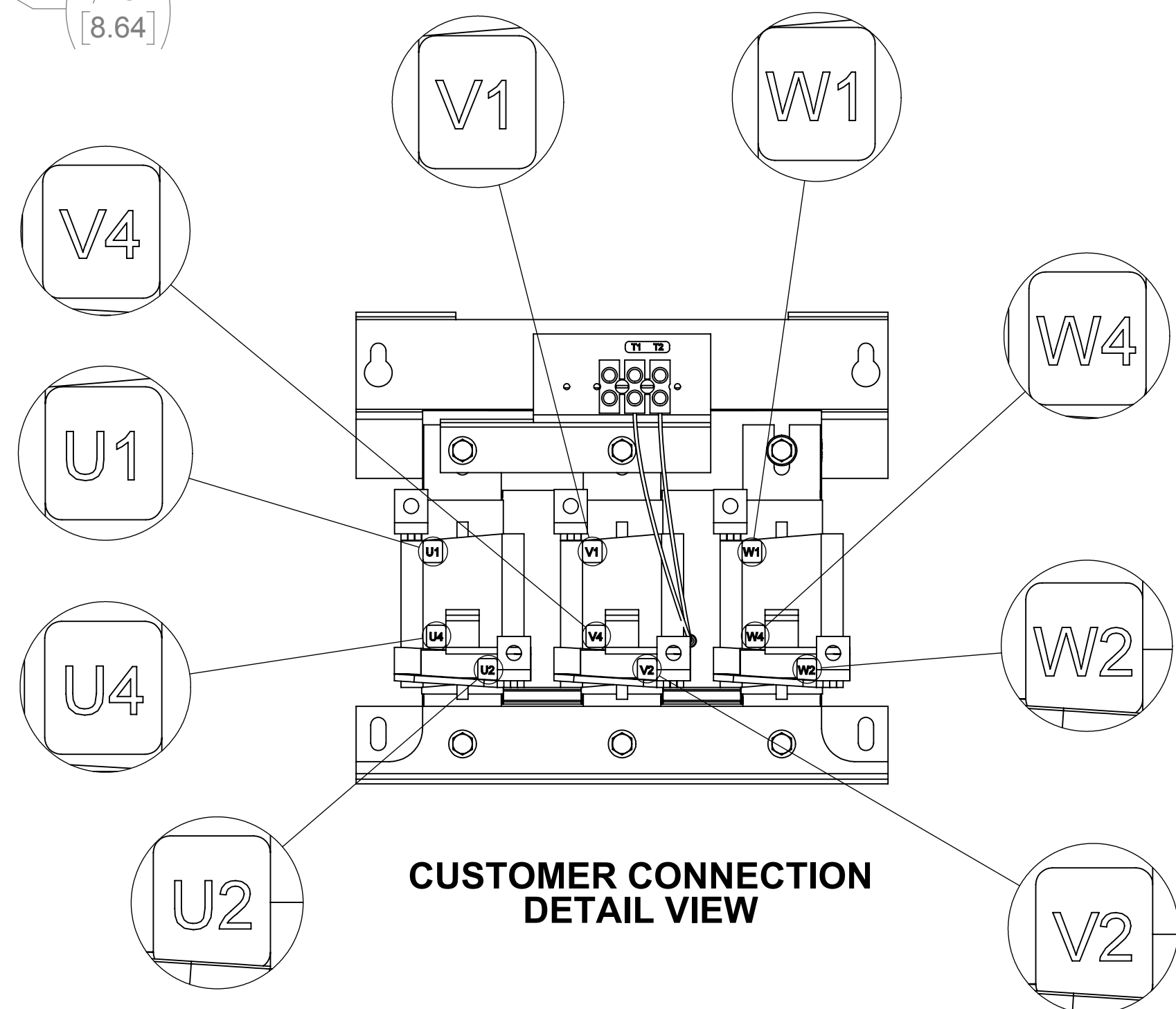
DETAIL B
(2 PLACES)



FRONT VIEW



RIGHT SIDE VIEW



CUSTOMER CONNECTION
DETAIL VIEW

NOTES:

1. TIGHTEN TERMINAL BLOCK SCREWS TO 16 IN/LBS. TORQUE.
2. TERMINAL WIRE SIZE: 4-14 AWG.
3. FILTER INCLUDES: CAP-531SW (QTY. 1).

THE COMPONENT, PART OR ASSEMBLY DESCRIBED IN THIS DOCUMENT MUST COMPLY WITH THE EU(EUROPEAN UNION) DIRECTIVE RoHS2			MATERIAL		CONFIDENTIAL AND PROPRIETARY INFORMATION THIS DOCUMENT CONTAINS CONFIDENTIAL AND PROPRIETARY INFORMATION OF MTE CORPORATION AND MAY NOT BE USED, COPIED OR DISCLOSED TO OTHERS EXCEPT WITH THE AUTHORIZED WRITTEN PERMISSION OF MTE CORPORATION		
CONTAINS <0.1% OF ANY SVHC BY WEIGHT PER REACH REGULATION					DESCRIPTION		
UNLESS OTHERWISE SPECIFIED DIMENSIONS ARE IN INCHES [MM] TOLERANCES ARE: ANGLES: ± 1 ° 1 PLACE .X: ± .1 [2.5] 2 PLACE .XX: ± .03 [0.76] 3 PLACE .XXX: ± .010 [0.254]			DRAWN MN	DATE 08/08/18	SWG 110A 600V 2-8kHz FILTER, OPEN PANEL		
			CHECKED MN	DATE 08/10/18			
			APPROVED TL	DATE 10/09/18			
					SIZE D	DWG No. CD SWGM0110E	REV 00
					SCALE 1:2	SHEET 1 OF 1	



N83 W13330 Leon Road
Menomonee Falls, WI 53051 USA
800.455-4683
262.253.8200