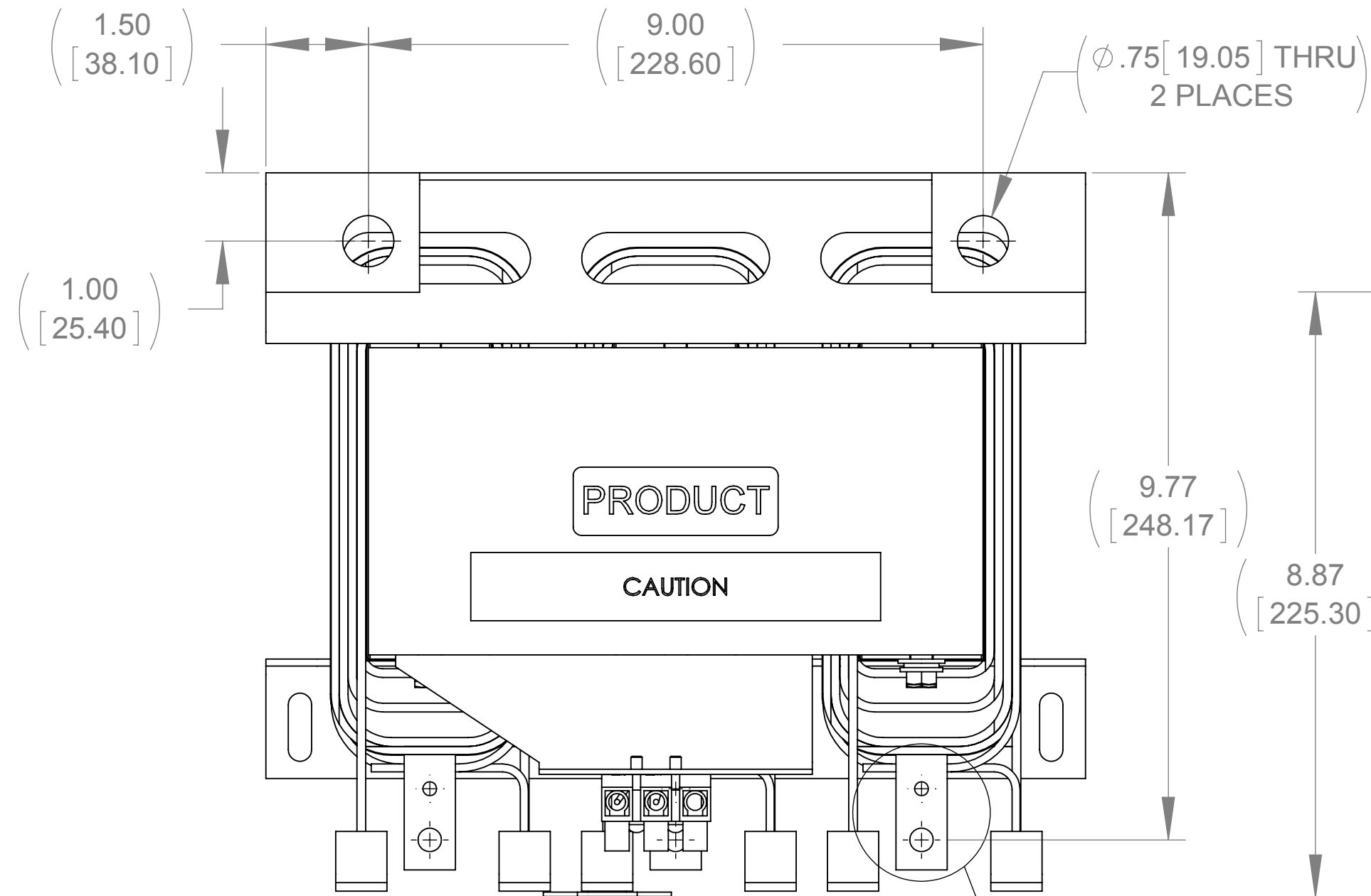
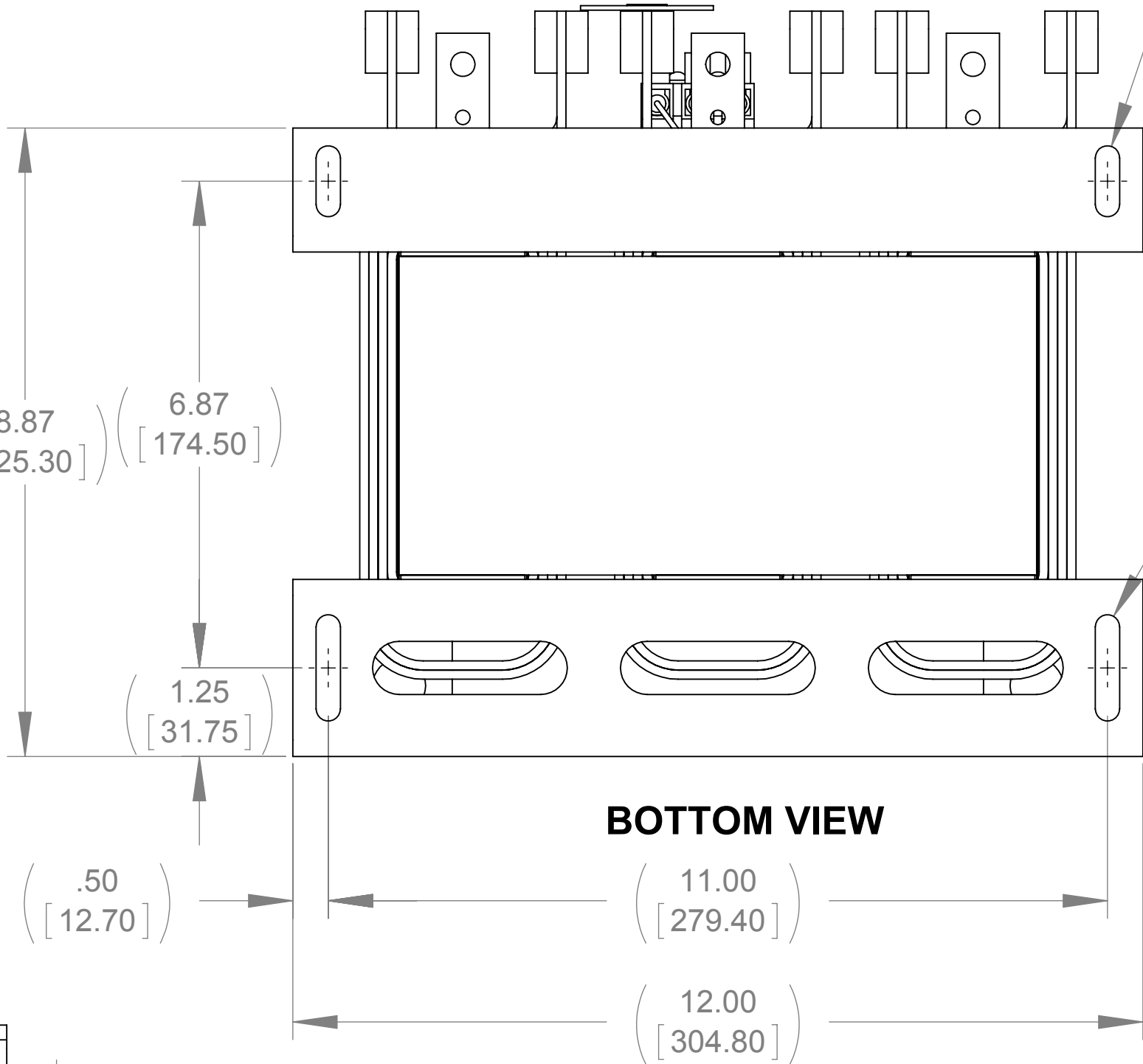


WEIGHT (LBS)
105

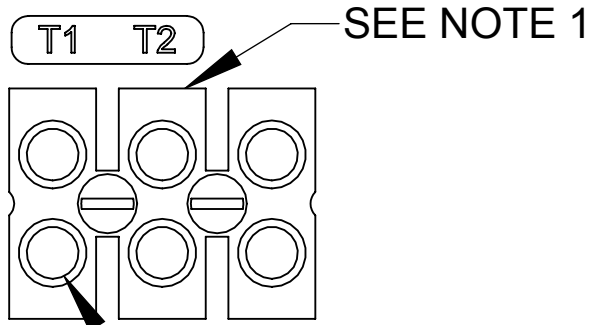
ECO No	DESCRIPTION	REV BY	DATE
M8850	ADDED WIRE RANGE TO NOTE 2	KV	11/14/13



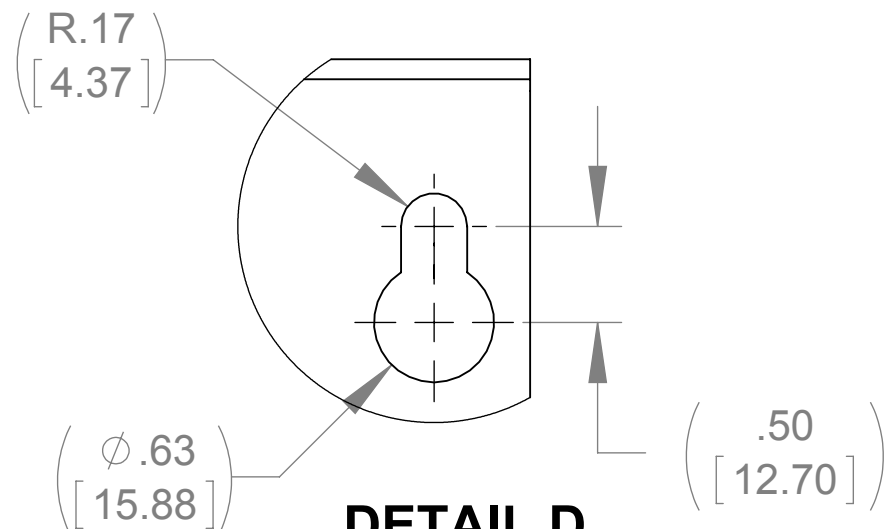
TOP VIEW



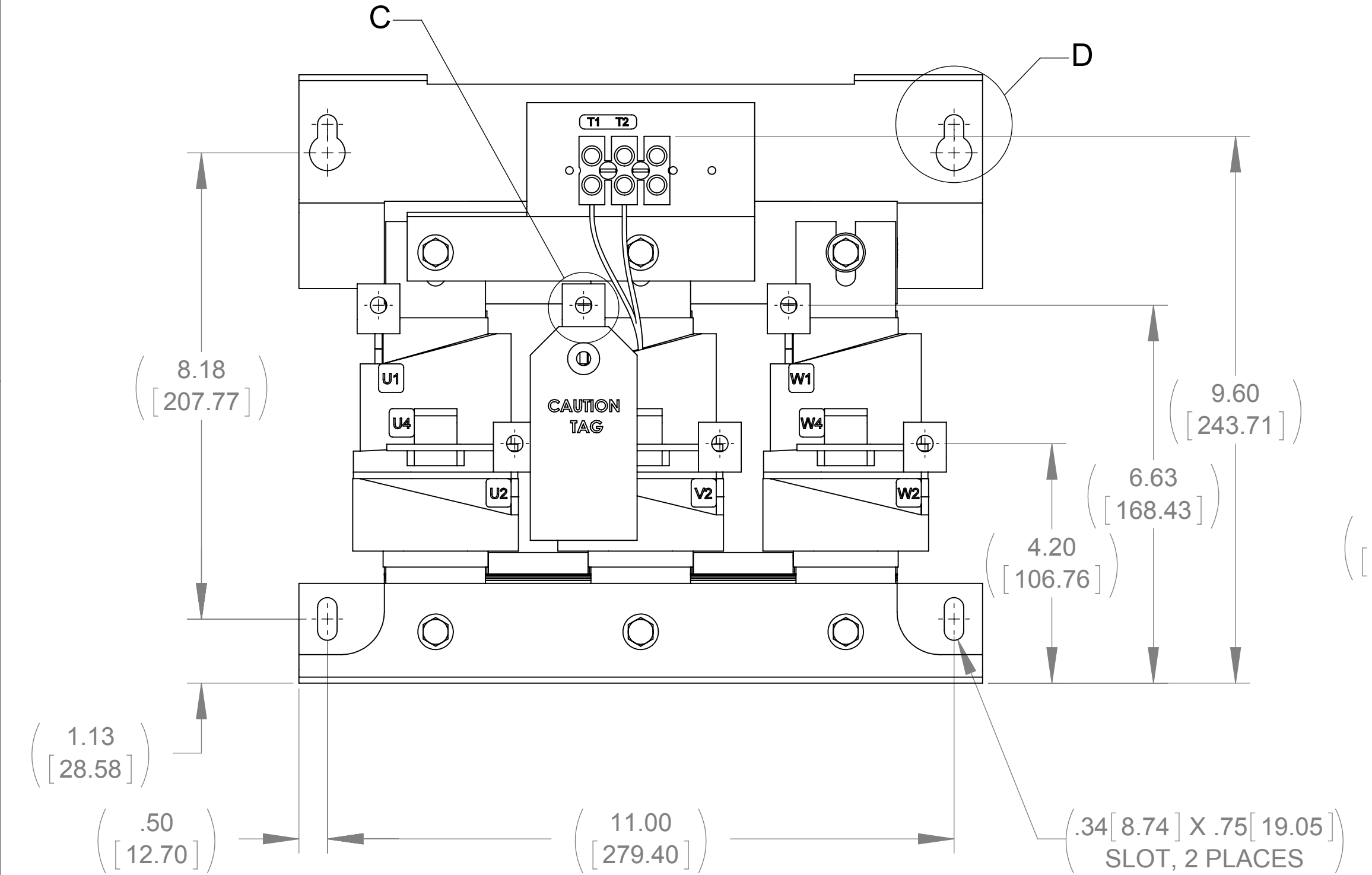
BOTTOM VIEW



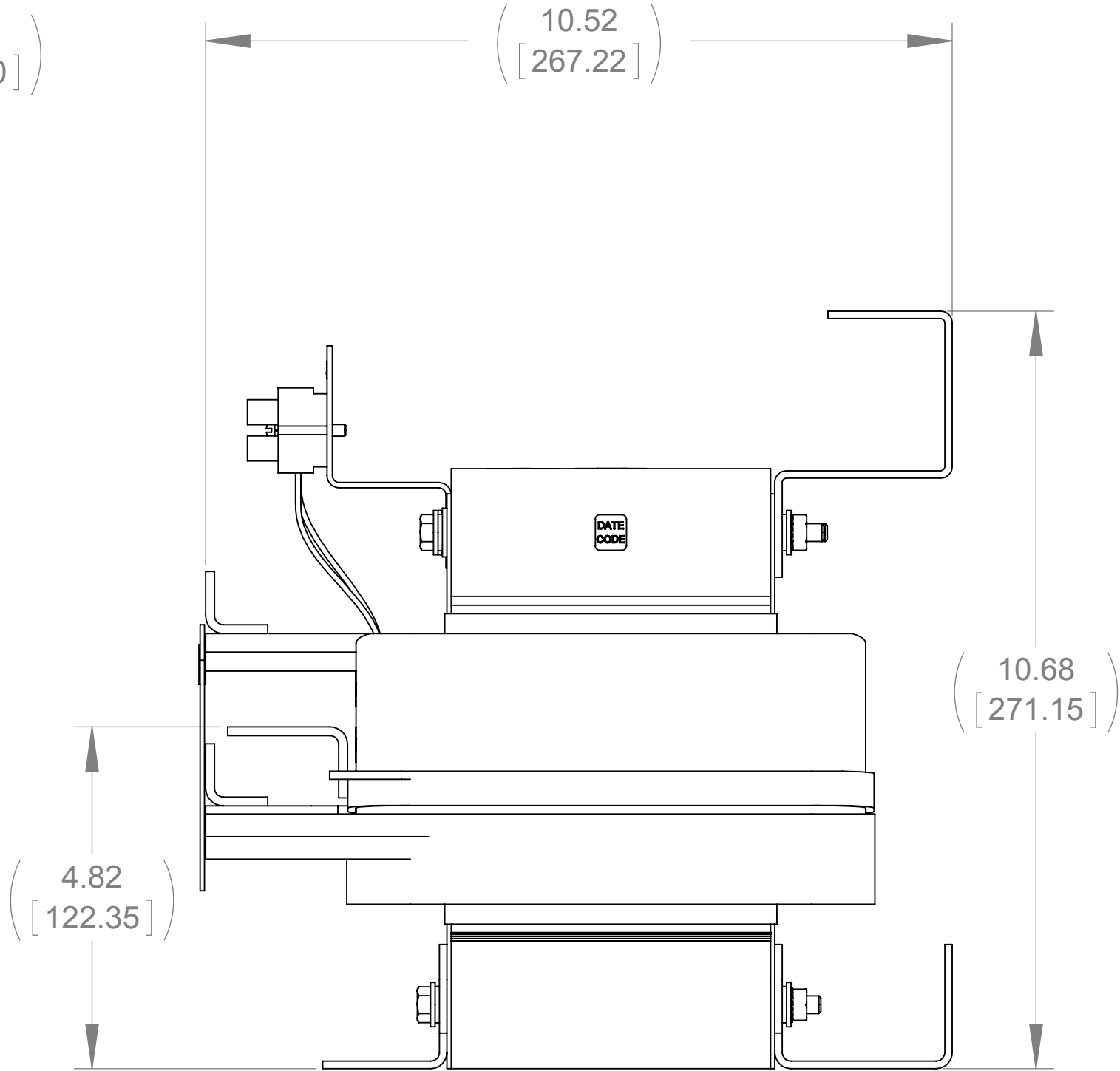
CUSTOMER CONNECTION
DETAIL VIEW (THERMAL)



DETAIL D
(2 PLACES)



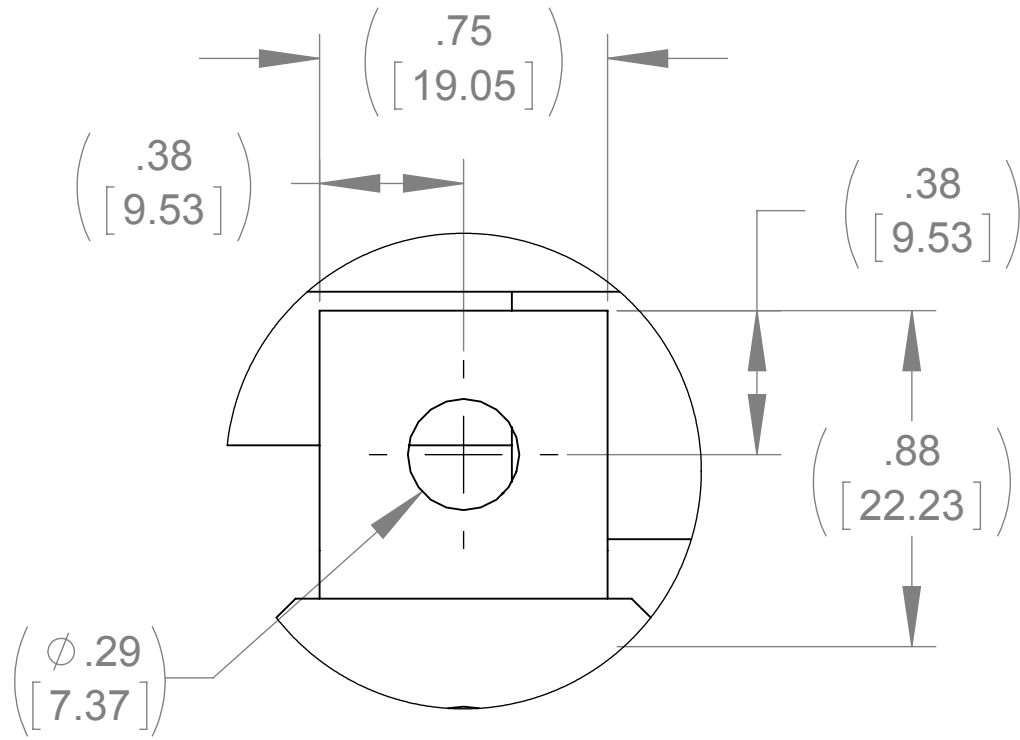
FRONT VIEW



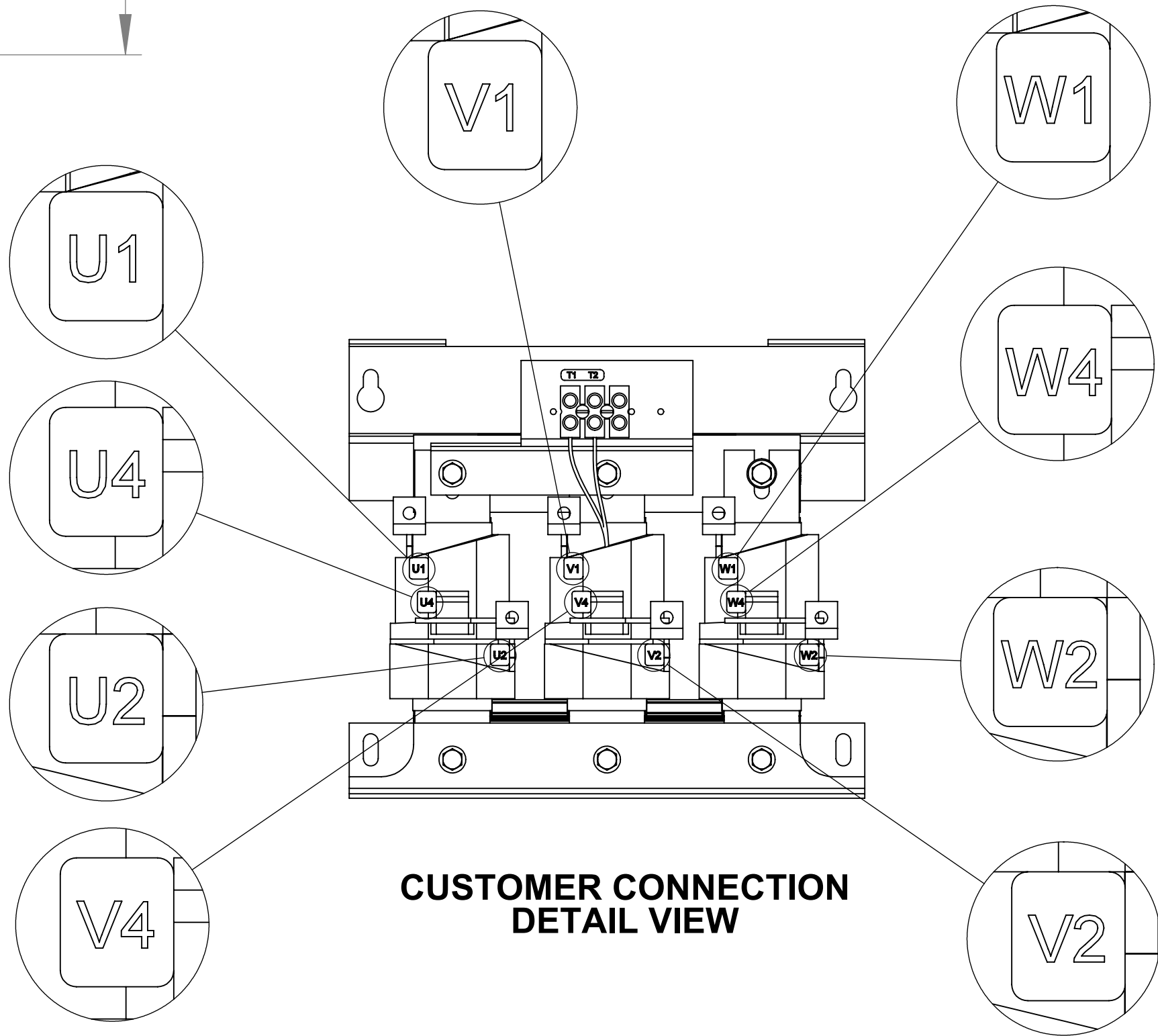
RIGHT SIDE VIEW



DETAIL B
(3 PLACES)



DETAIL C
(6 PLACES)



CUSTOMER CONNECTION
DETAIL VIEW

- NOTES:
1. TIGHTEN TERMINAL BLOCK SCREWS TO 16 IN/LBS. TORQUE, MAX.
2. TERMINAL WIRE SIZE: 4-14 AWG.
3. FILTER REQUIRES: CAP-515SW (QTY. 1).

THE COMPONENT, PART OR ASSEMBLY DESCRIBED IN THIS DOCUMENT MUST COMPLY WITH THE EU(EUROPEAN UNION) DIRECTIVE RoHS2		MATERIAL		CONFIDENTIAL AND PROPRIETARY INFORMATION THIS DOCUMENT CONTAINS CONFIDENTIAL AND PROPRIETARY INFORMATION OF MTE CORPORATION AND MAY NOT BE USED, COPIED OR DISCLOSED TO OTHERS EXCEPT WITH THE AUTHORIZED WRITTEN PERMISSION OF MTE CORPORATION	
CONTAINS <0.1% OF ANY SVHC BY WEIGHT PER REACH REGULATION				DESCRIPTION	
UNLESS OTHERWISE SPECIFIED DIMENSIONS ARE IN INCHES [MM] TOLERANCES ARE: ANGLES: ± 1 ° 1 PLACE .X: ± .1 [2.5] 2 PLACE .XX: ± .03 [0.76] 3 PLACE .XXX: ± .010 [0.254]		DRAWN MN 09/24/13		DATE 09/24/13	
		CHECKED JM 11/14/13		DATE 11/14/13	
		APPROVED JM 11/14/13		DATE 11/14/13	
		SIZE D		DWG No CD SWGM0110D	
		SCALE 1:2		REV 01	
				SHEET 1 OF 1	

MTE
AN SL POWER ELECTRONICS COMPANY

N83 W13330 Leon Road
Menomonee Falls, WI 53051 USA
800.455.4683
262.253.8200