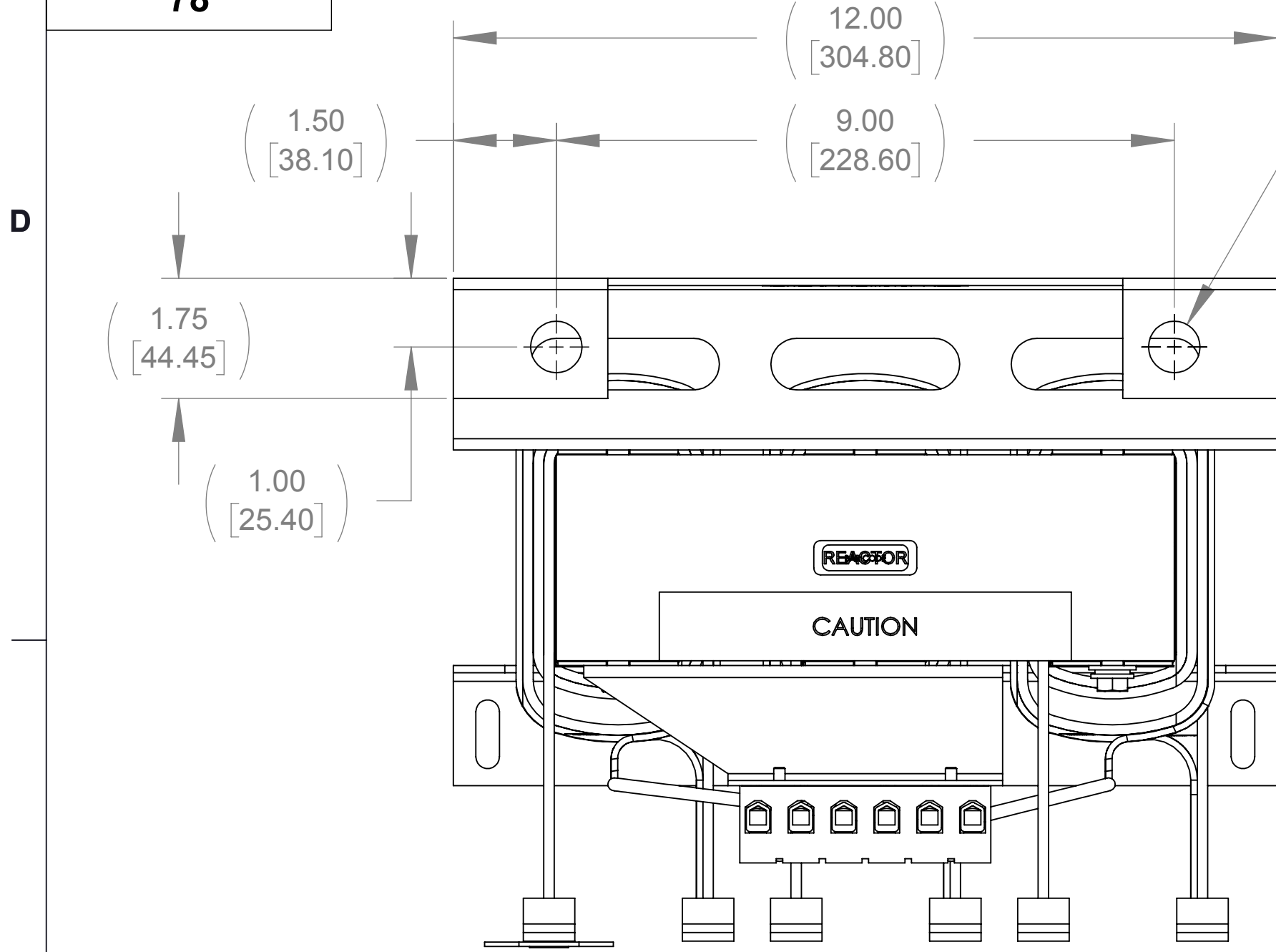
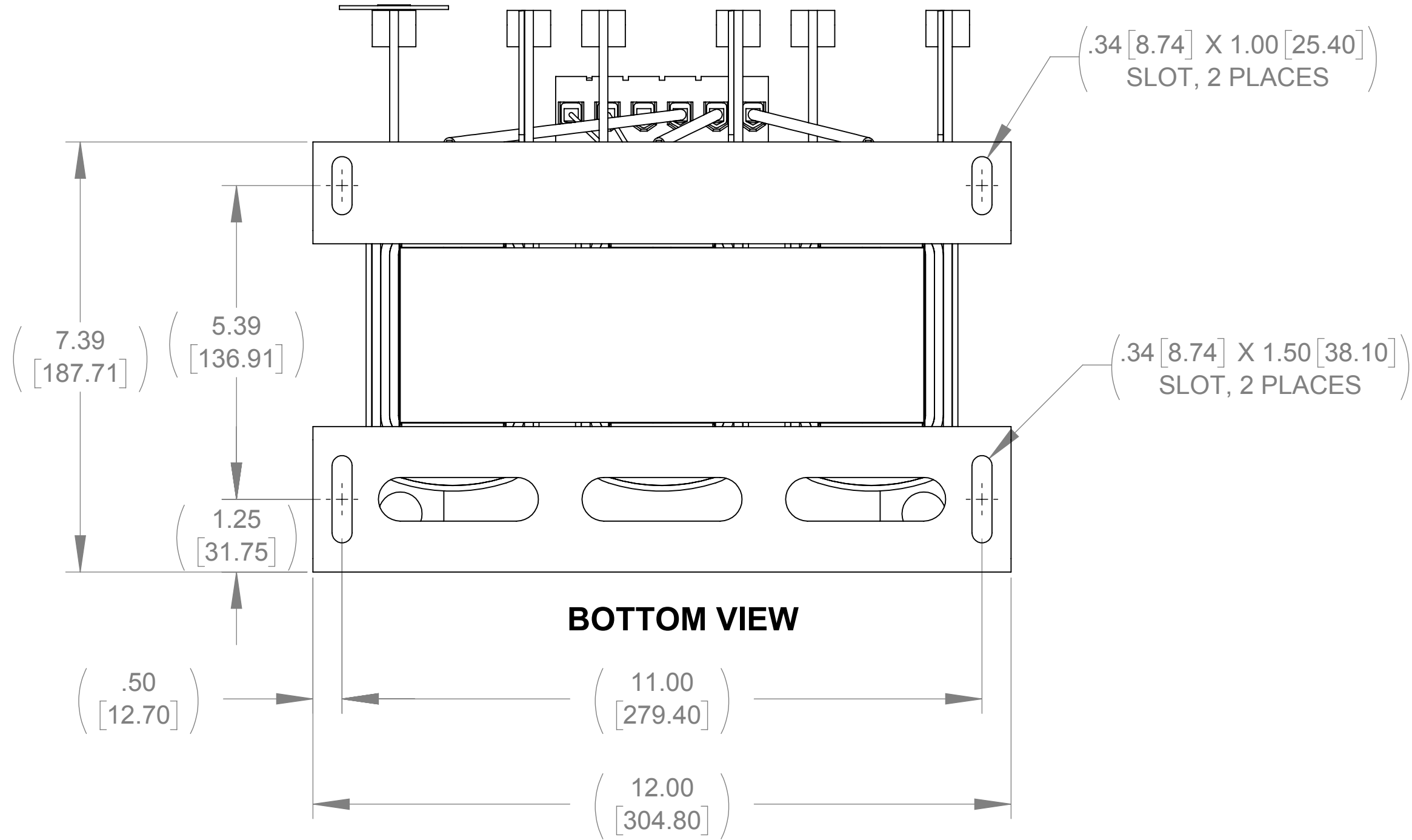


WEIGHT (LBS)
78

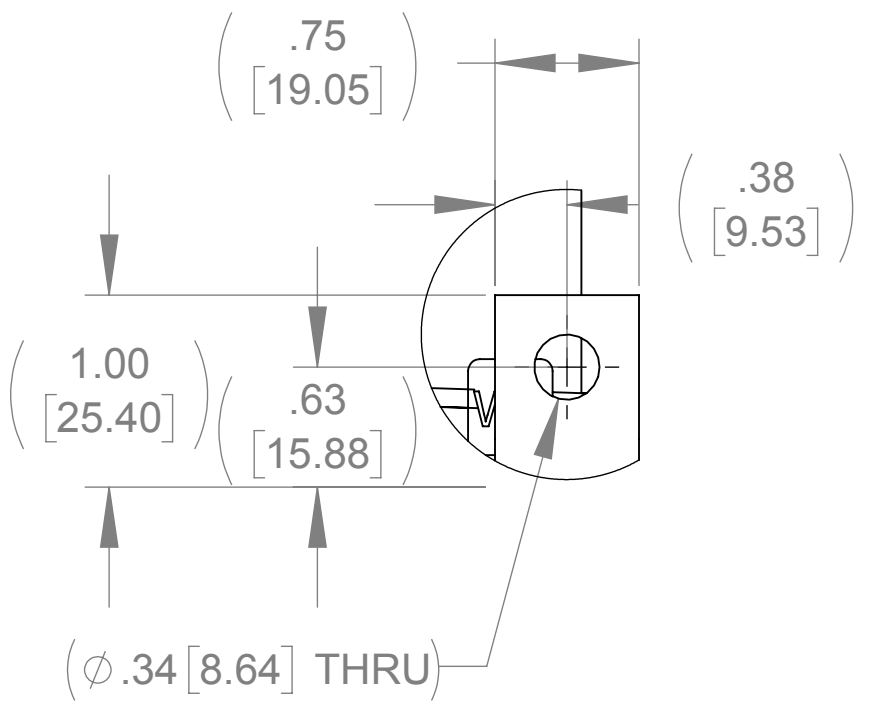
ECO No	DESCRIPTION	REV BY	DATE
M11205	UPDATED PER NEW COIL AND CAP DESIGN	WF	08/15/18



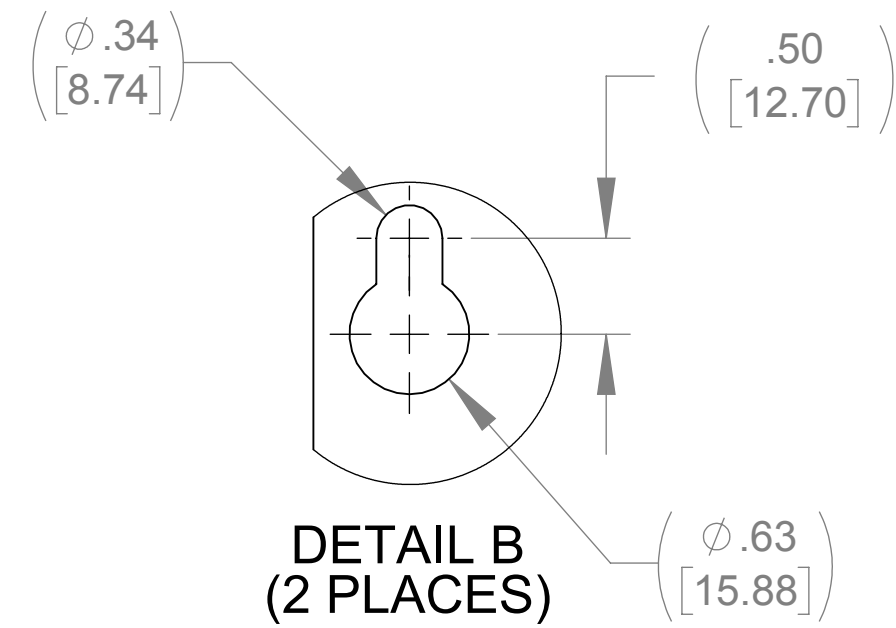
TOP VIEW



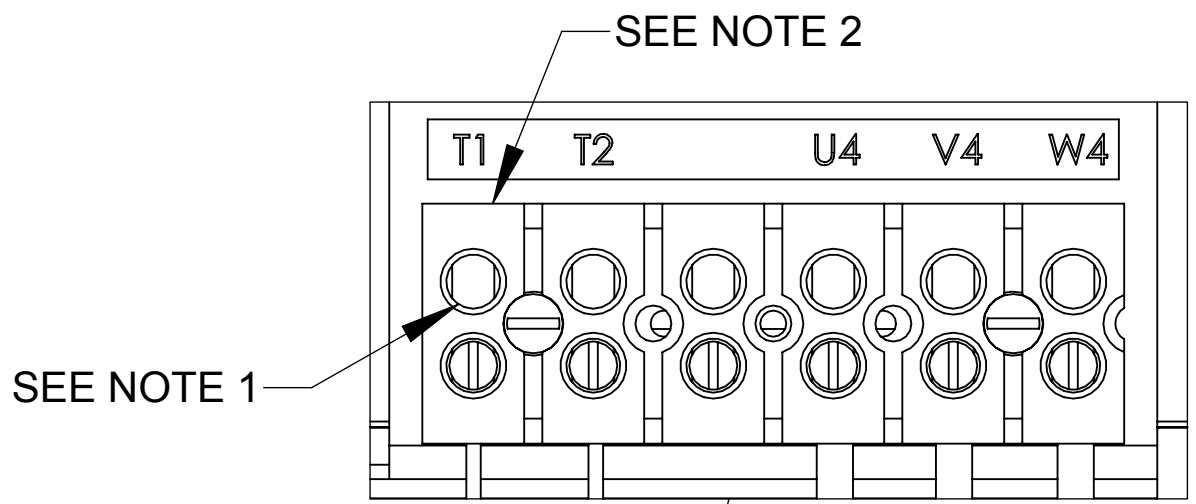
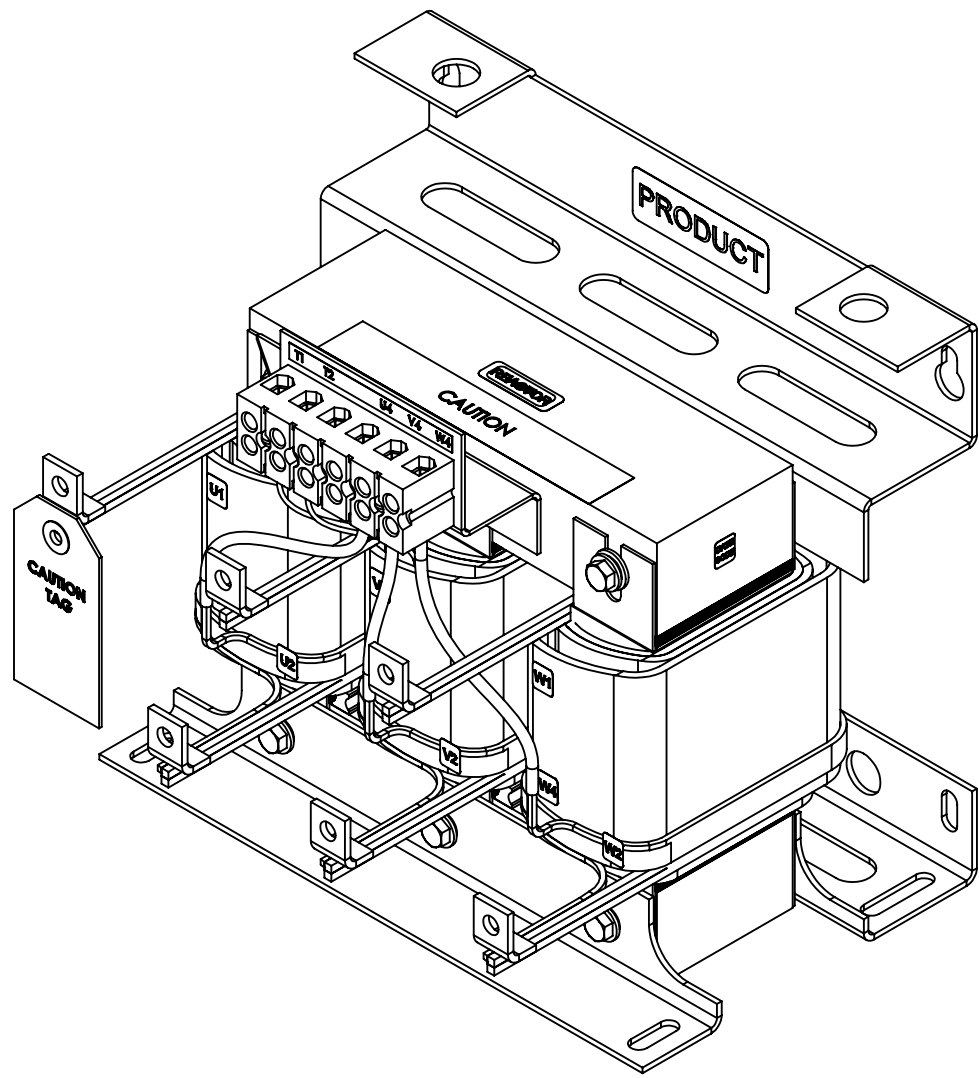
BOTTOM VIEW



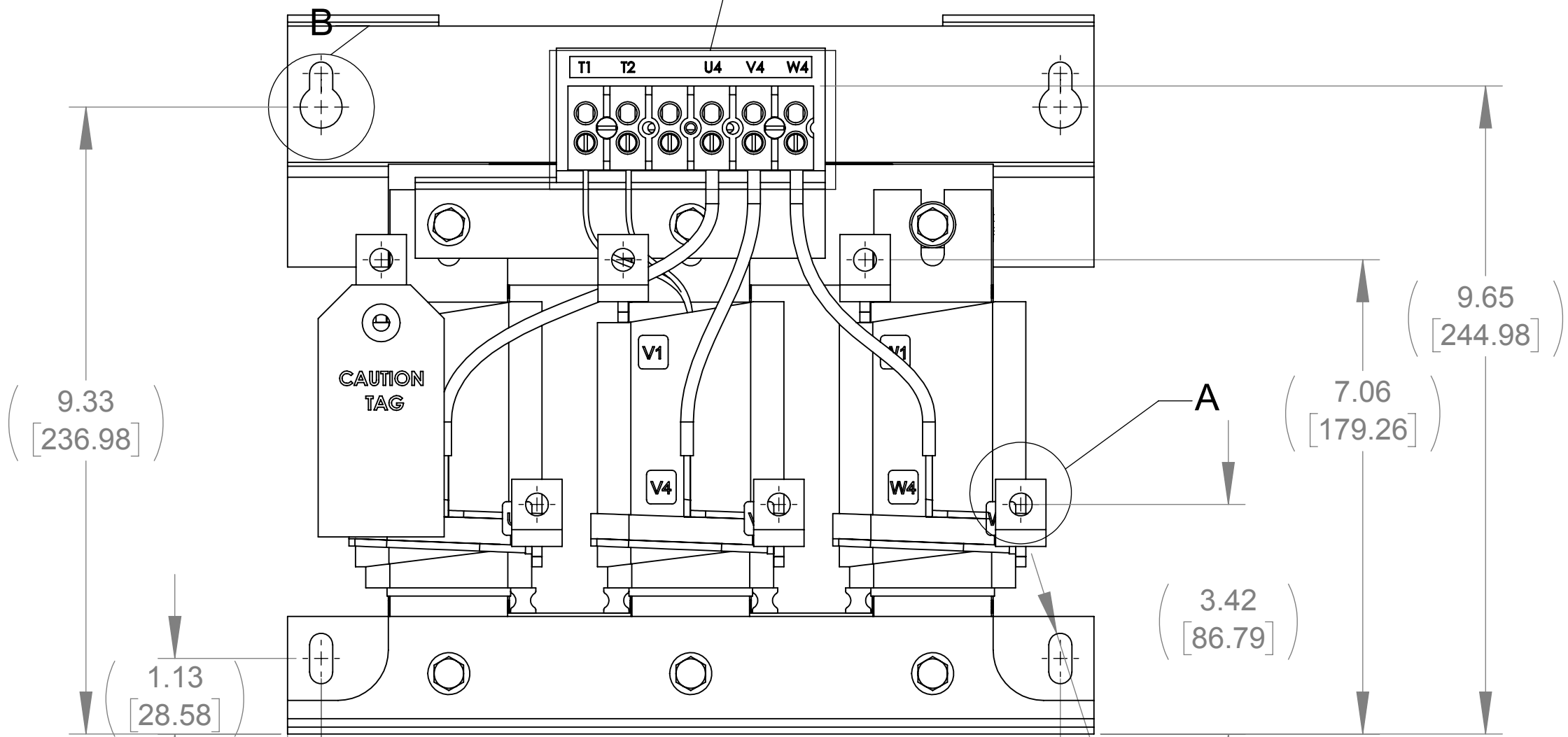
DETAIL A
(6 PLACES)



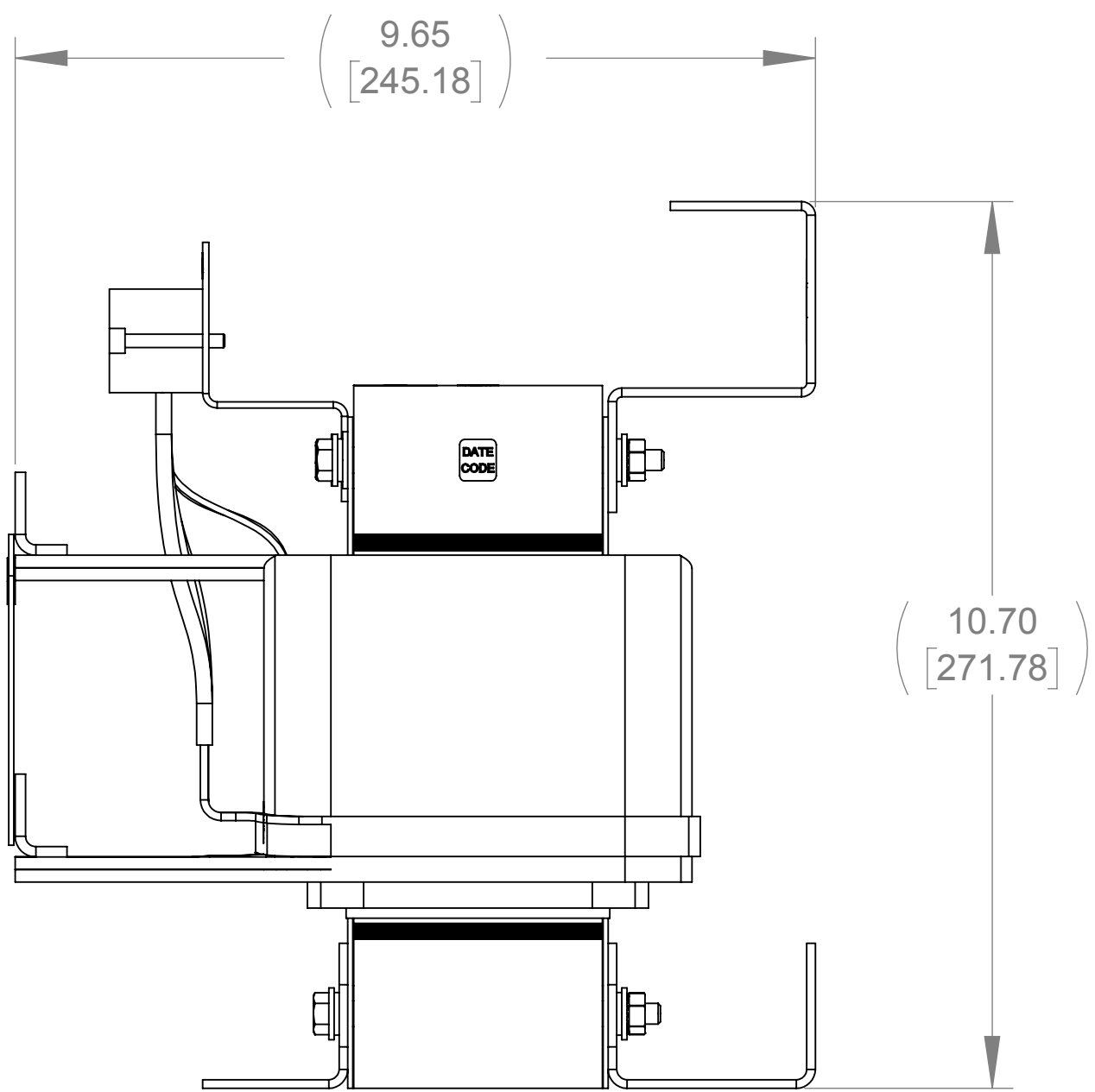
DETAIL B
(2 PLACES)



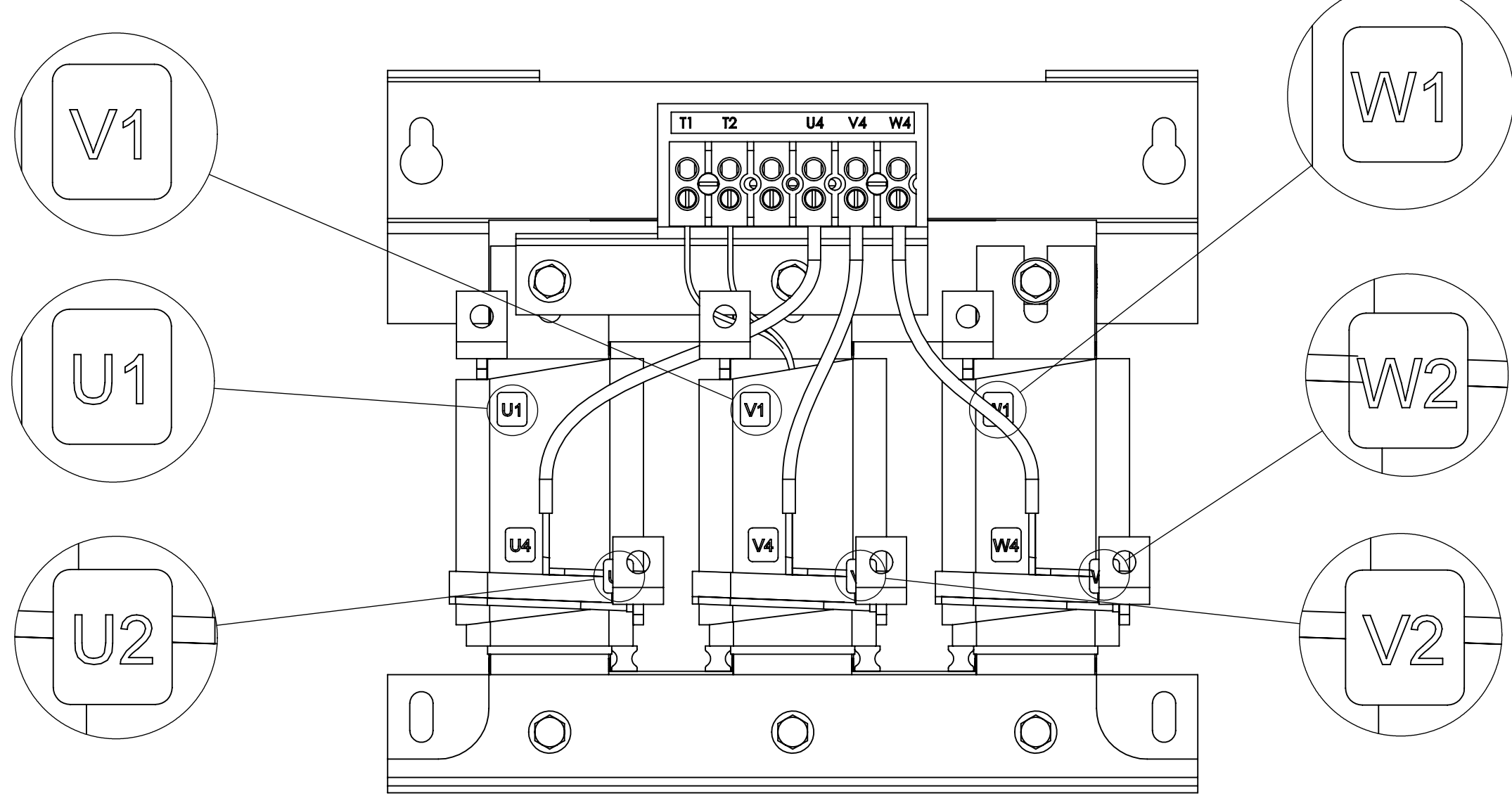
DETAIL C
CUSTOMER CONNECTION
DETAIL VIEW



FRONT VIEW



SIDE VIEW



CUSTOMER CONNECTION
DETAIL VIEW

NOTES:

1. TIGHTEN TERMINAL BLOCK SCREWS TO 16 IN/LBS. TORQUE.
2. TERMINAL WIRE SIZE: 4-14 AWG.
3. FILTER INCLUDES: CAP-529SW (QTY. 1).

THE COMPONENT, PART OR ASSEMBLY DESCRIBED IN THIS DOCUMENT MUST COMPLY WITH THE EU(EUROPEAN UNION) DIRECTIVE RoHS2		MATERIAL		CONFIDENTIAL AND PROPRIETARY INFORMATION THIS DOCUMENT CONTAINS CONFIDENTIAL AND PROPRIETARY INFORMATION OF MTE CORPORATION AND MAY NOT BE USED, COPIED OR DISCLOSED TO OTHERS EXCEPT WITH THE AUTHORIZED WRITTEN PERMISSION OF MTE CORPORATION	
CONTAINS <0.1% OF ANY SVHC BY WEIGHT PER REACH REGULATION				DESCRIPTION	
UNLESS OTHERWISE SPECIFIED DIMENSIONS ARE IN INCHES [MM] TOLERANCES ARE: ANGLES: $\pm 1^\circ$ 1 PLACE .X: $\pm .1$ [2.5] 2 PLACE .XX: $\pm .03$ [0.76] 3 PLACE .XXX: $\pm .010$ [0.254]		DRAWN MN 02/07/18 CHECKED WF 08/15/18 APPROVED MW 10/11/18		SWG 65A 600V 2-8kHz OPEN PANEL	
N83 W13330 Leon Road Menomonee Falls, WI 53051 USA 800.455.4683 262.253.8200		SIZE D 1:2		DWG No. CD SWGM0065E REV 02	
				SHEET 1 OF 1	