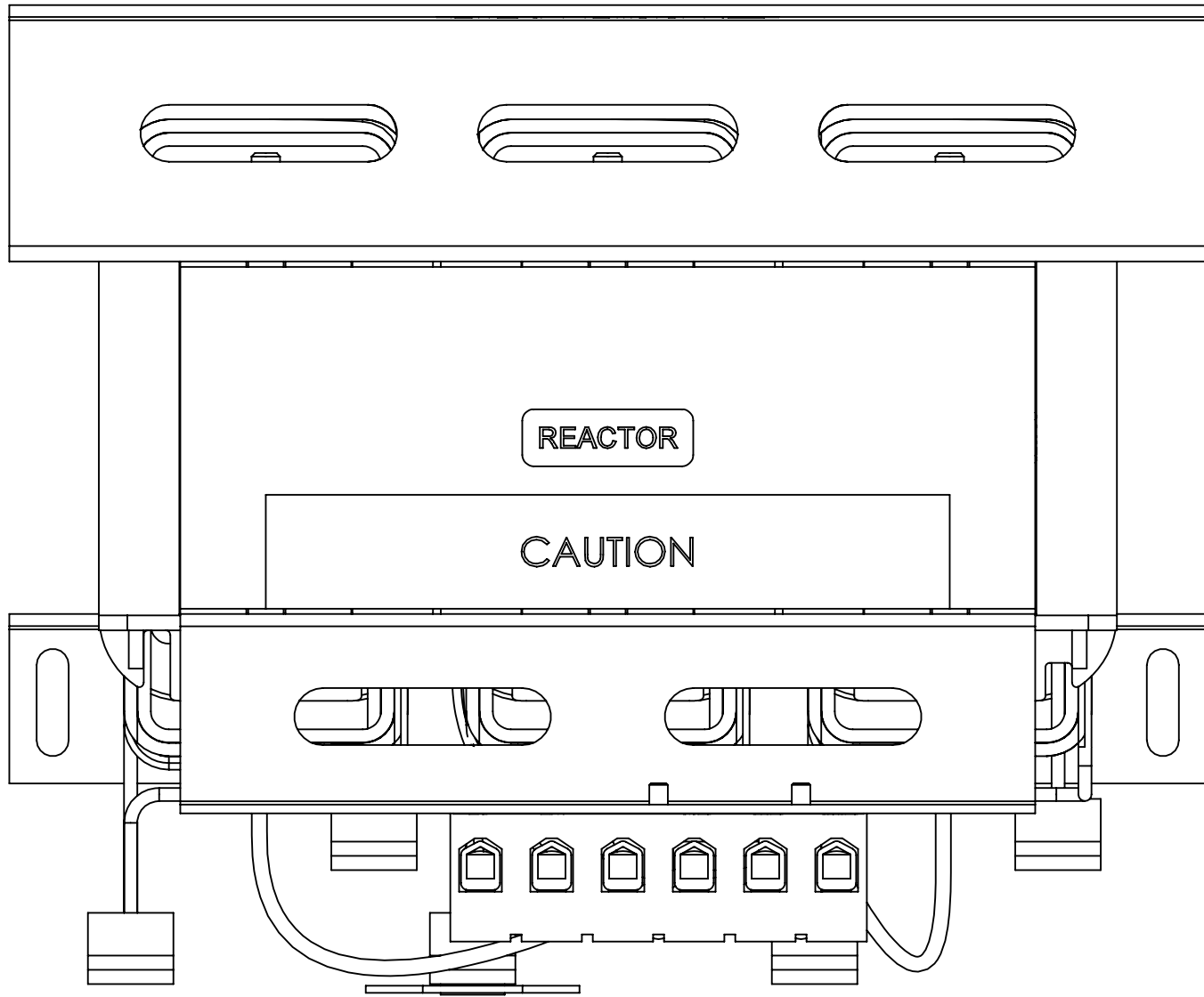
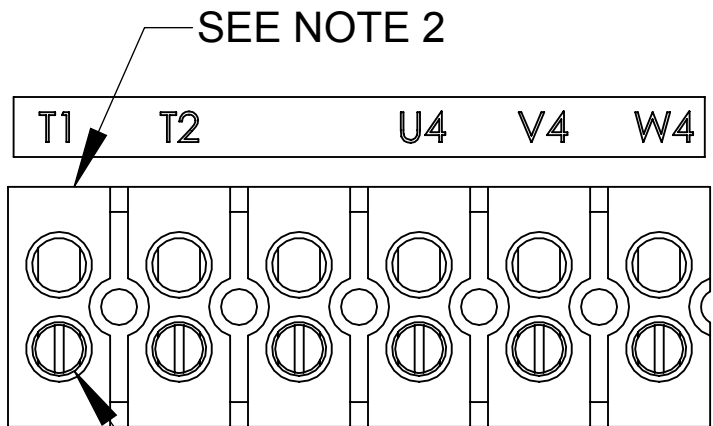


WEIGHT (LBS)
54

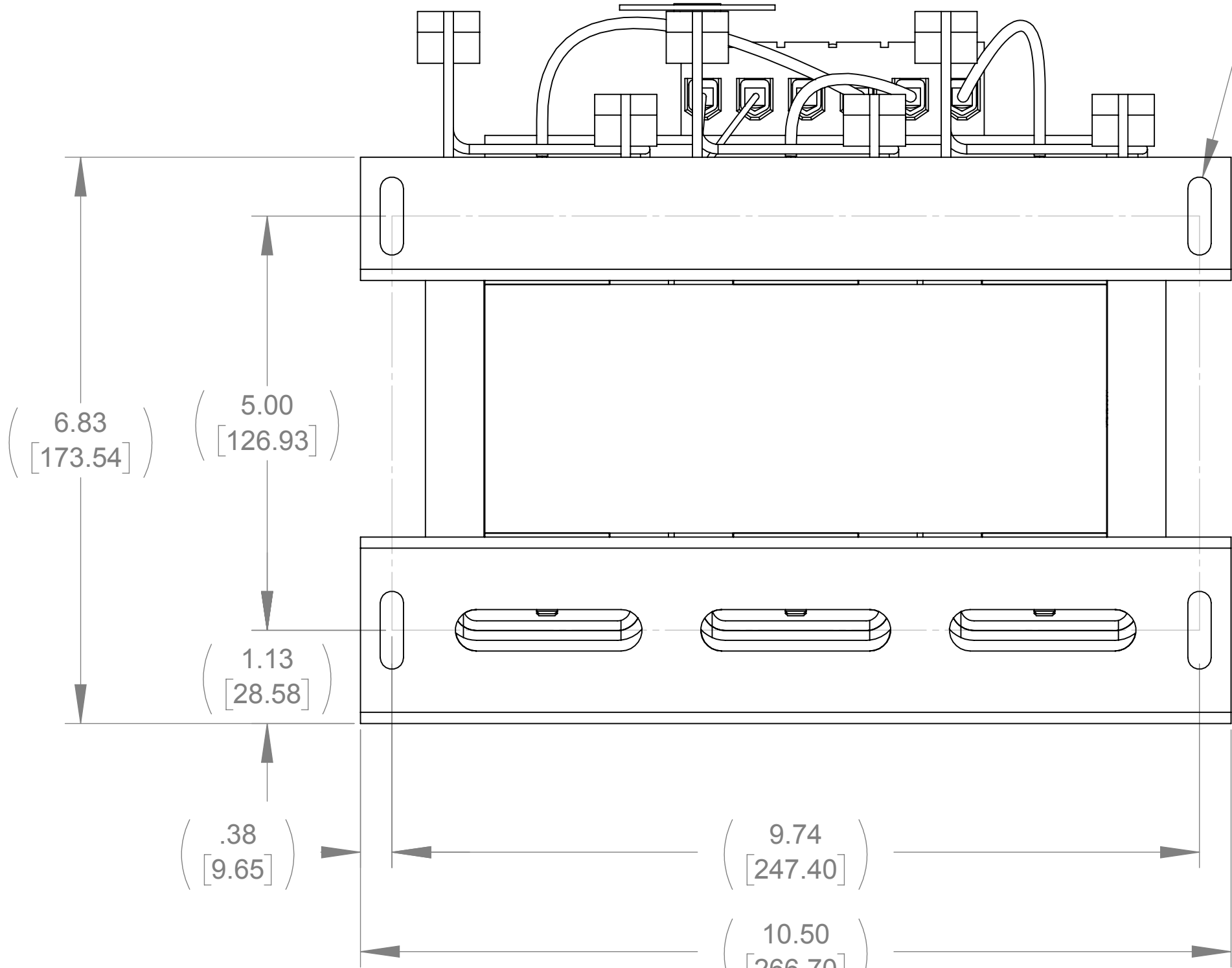
ECO No	DESCRIPTION	REV BY	DATE
M10029	ADDED DIMENSION PER MARKUP.	RR	12/21/16



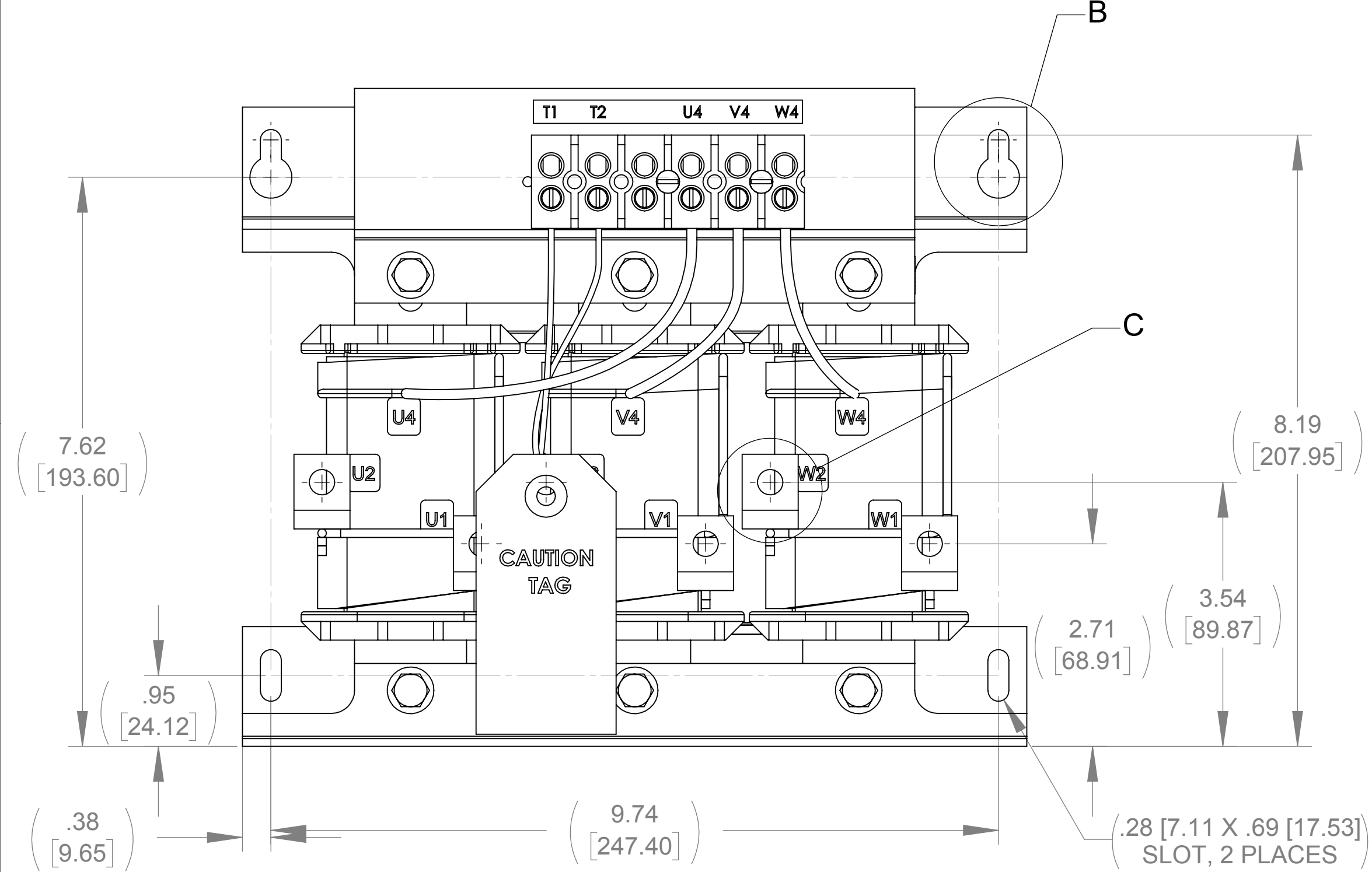
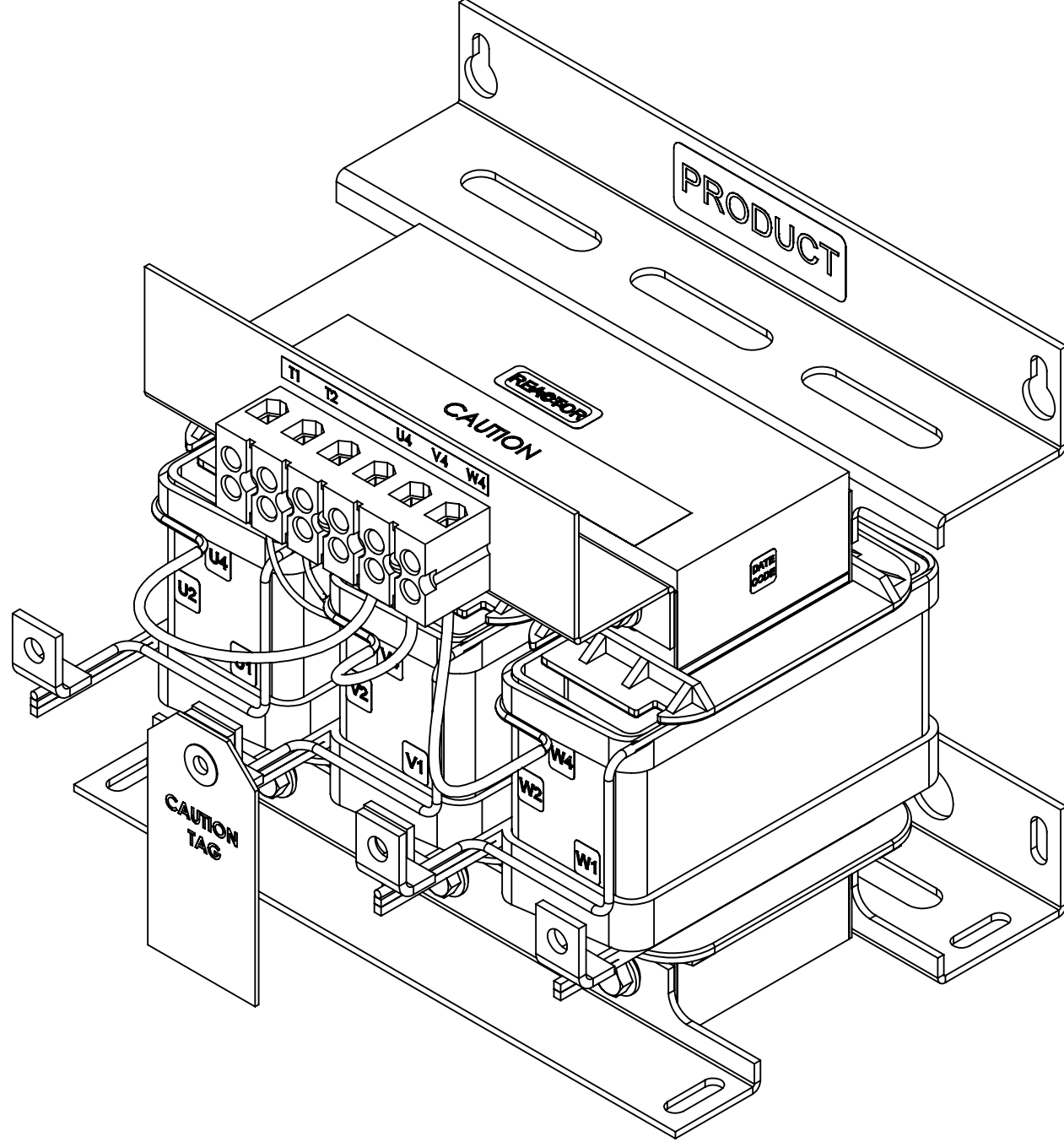
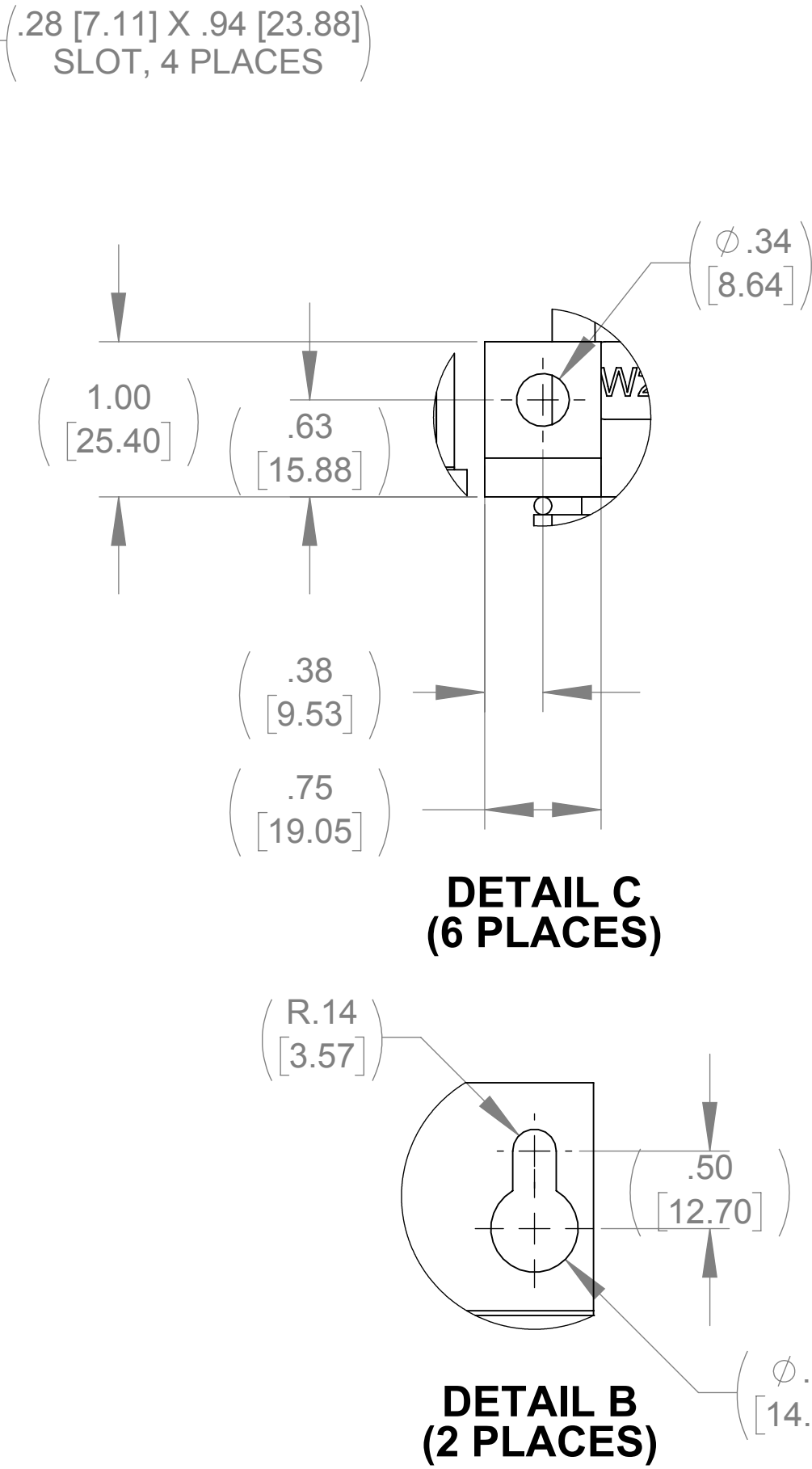
TOP VIEW



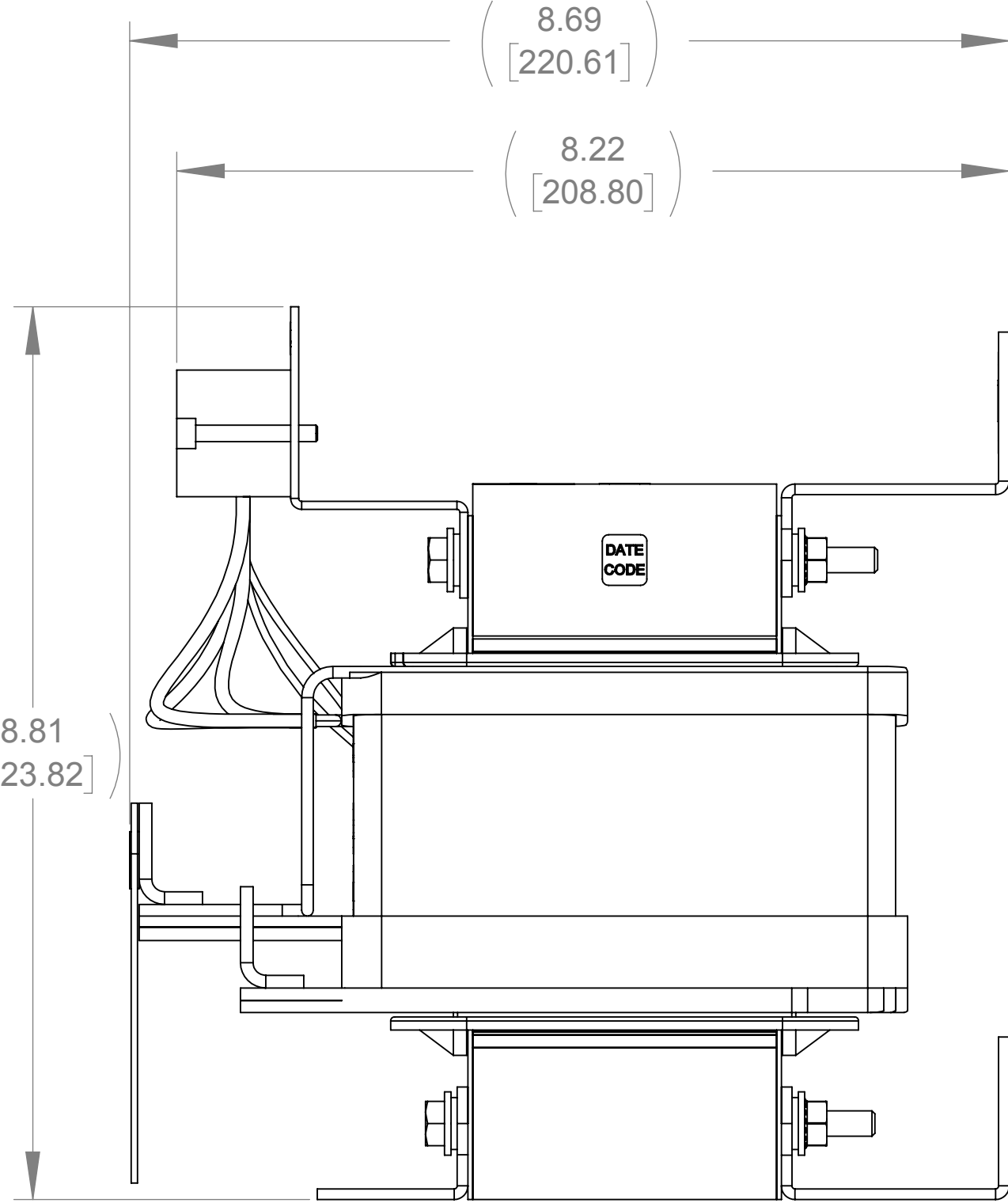
CUSTOMER CONNECTION
DETAIL VIEW (THERMAL)



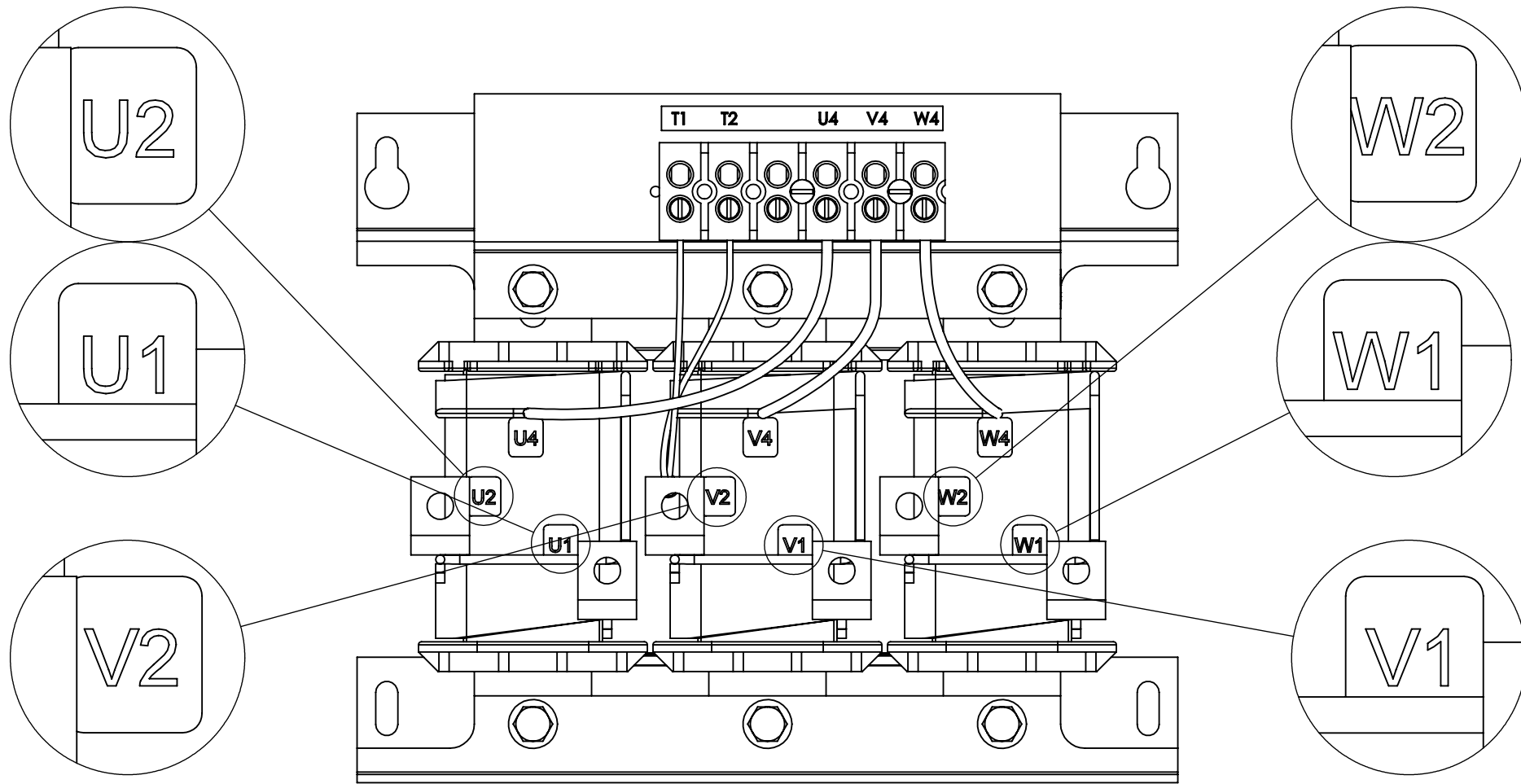
BOTTOM VIEW



FRONT VIEW



RIGHT SIDE VIEW



CUSTOMER CONNECTION
DETAIL VIEW

- NOTES:
1. TIGHTEN TERMINAL BLOCK SCREWS TO 16 IN/LBS. TORQUE, MAX.
2. TERMINAL WIRE SIZE: 4-14 AWG.
3. FILTER REQUIRES: CP-512SW (QTY. 1).

THE COMPONENT, PART OR ASSEMBLY DESCRIBED IN THIS DOCUMENT MUST COMPLY WITH THE EU(EUROPEAN UNION) DIRECTIVE RoHS2		MATERIAL		CONFIDENTIAL AND PROPRIETARY INFORMATION THIS DOCUMENT CONTAINS CONFIDENTIAL AND PROPRIETARY INFORMATION OF MTE CORPORATION AND MAY NOT BE USED, COPIED OR DISCLOSED TO OTHERS EXCEPT WITH THE AUTHORIZED WRITTEN PERMISSION OF MTE CORPORATION	
CONTAINS <0.1% OF ANY SVHC BY WEIGHT PER REACH REGULATION				DESCRIPTION	
UNLESS OTHERWISE SPECIFIED DIMENSIONS ARE IN INCHES [MM] TOLERANCES ARE: ANGLES: ± 1 ° 1 PLACE .X: ± .1 [2.5] 2 PLACE .XX: ± .03 [0.76] 3 PLACE .XXX: ± .010 [0.254]		DRAWN MN 09/11/13		SIZE D	
		CHECKED RH 12/22/16		DWG No. CD SWGM0055D	
		APPROVED RH 12/22/16		REV 03	
				SCALE 2:3	
				SHEET 1 OF 1	



N83 W13330 Leon Road
Menomonee Falls, WI 53051 USA
800.455-4683
262.253-8200