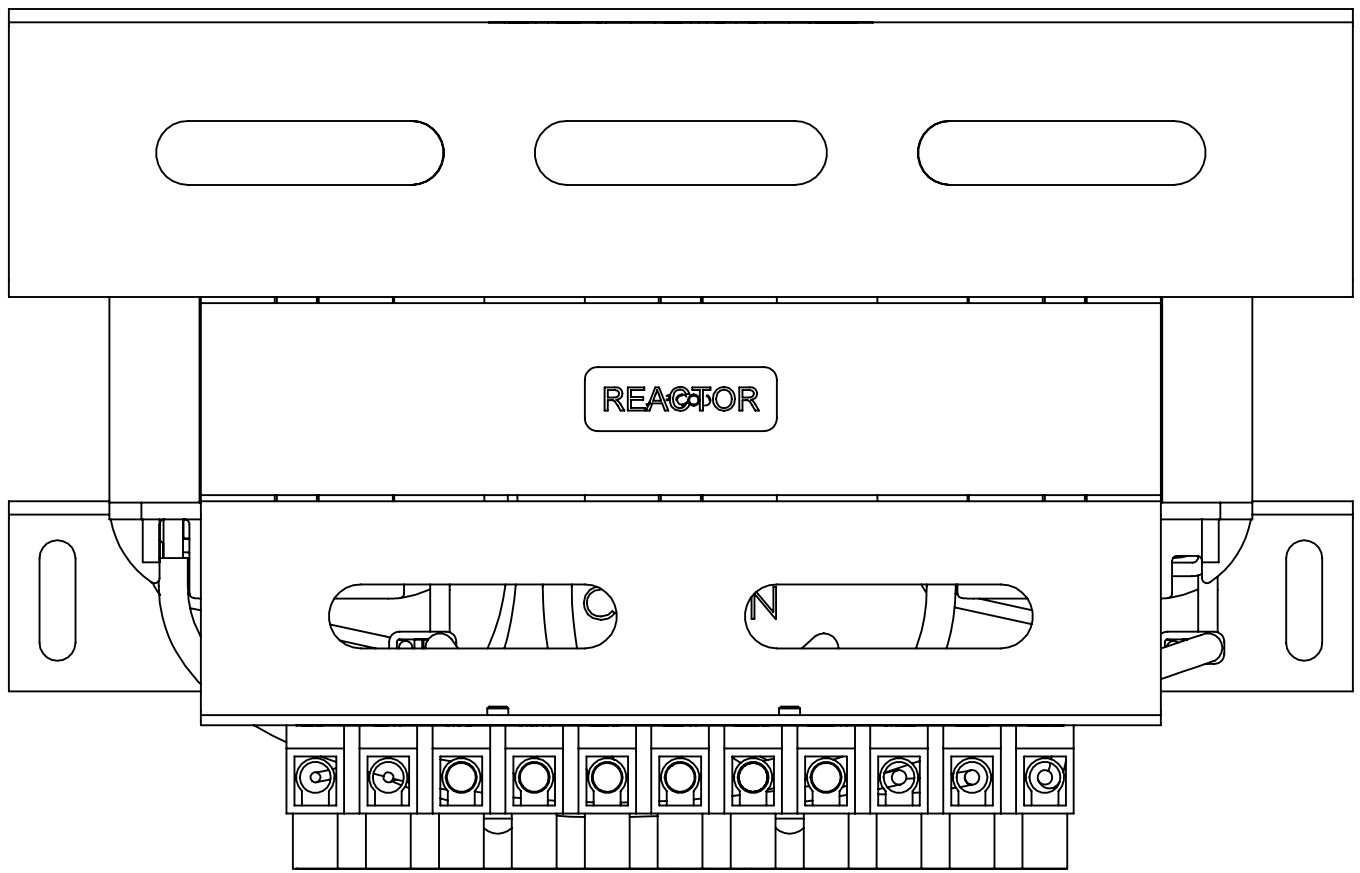
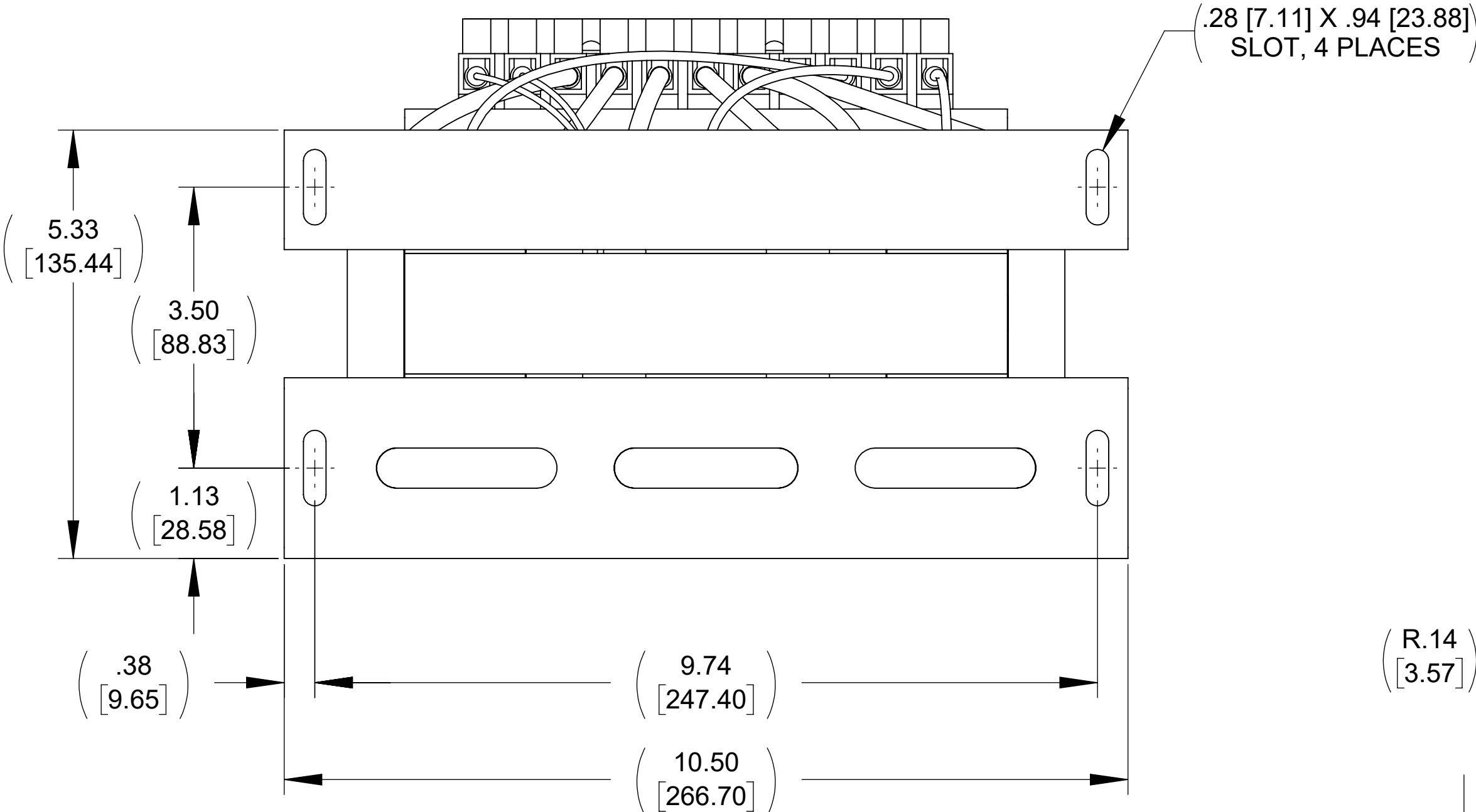


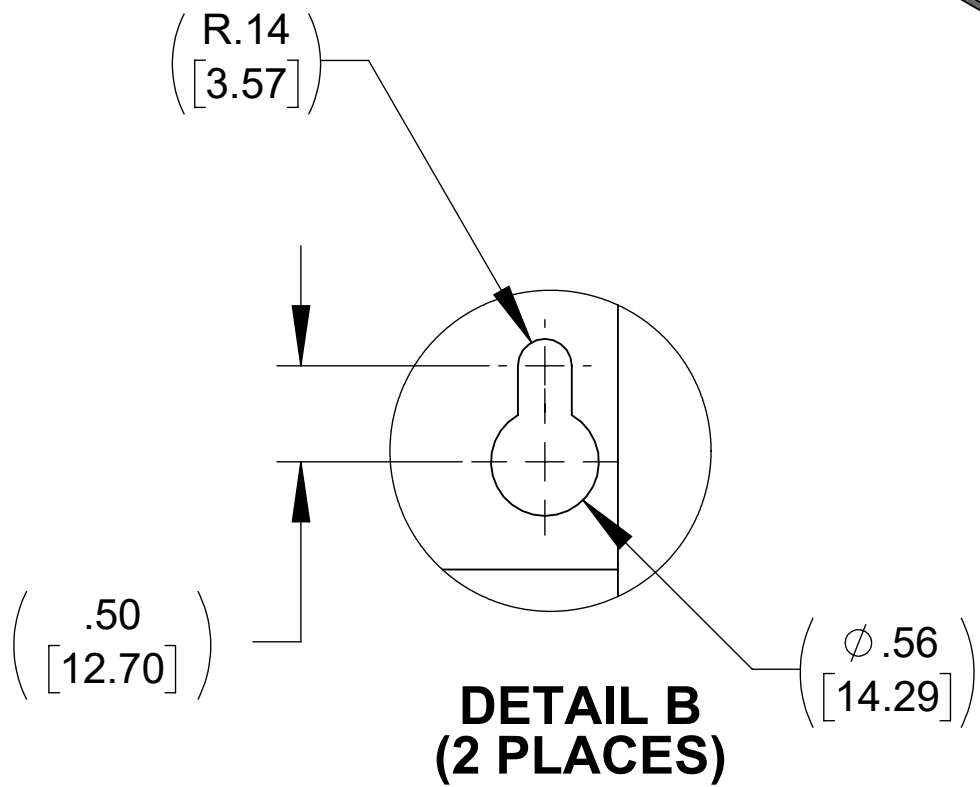
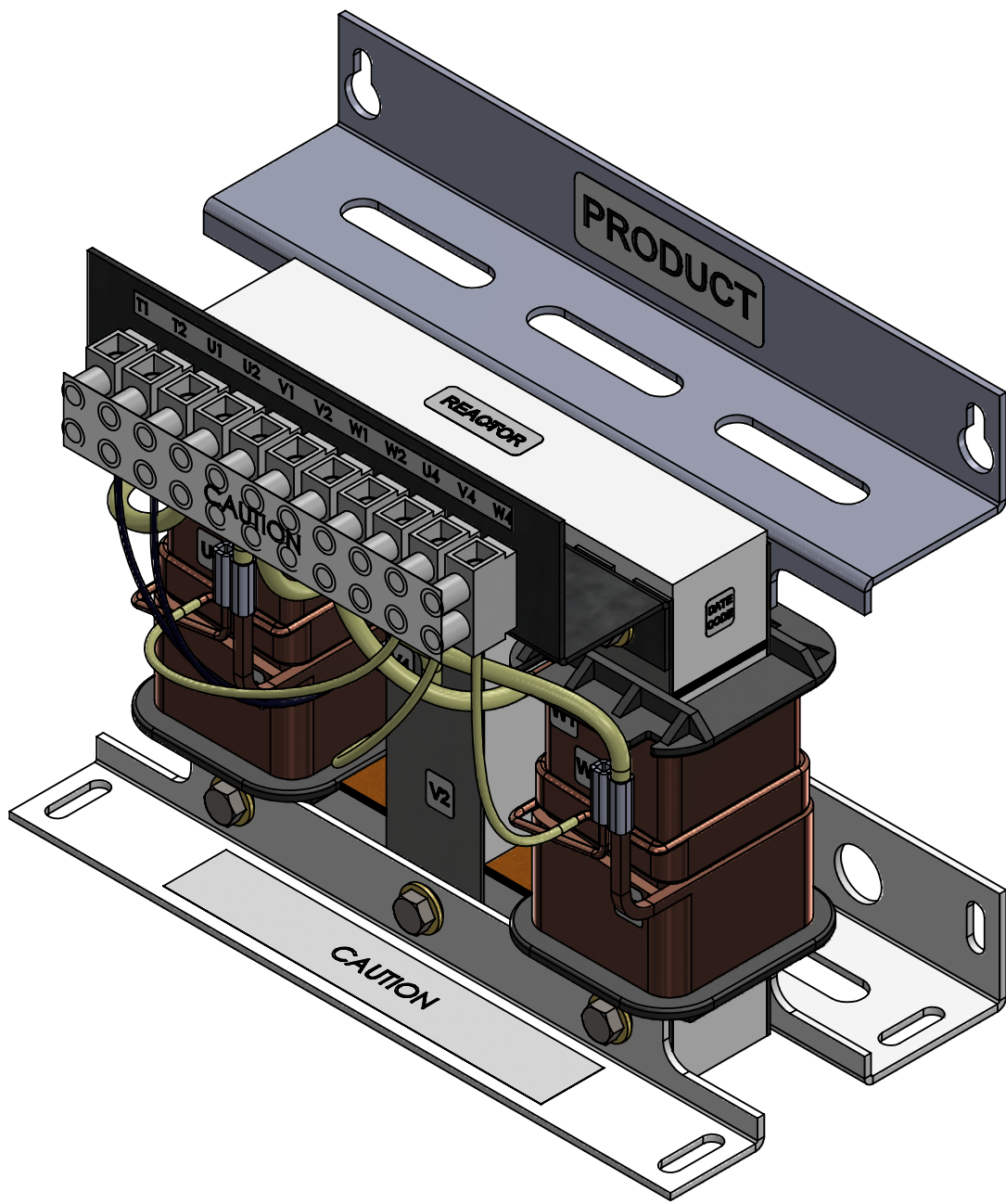
APPROX. WEIGHT  
(LBS)  
28



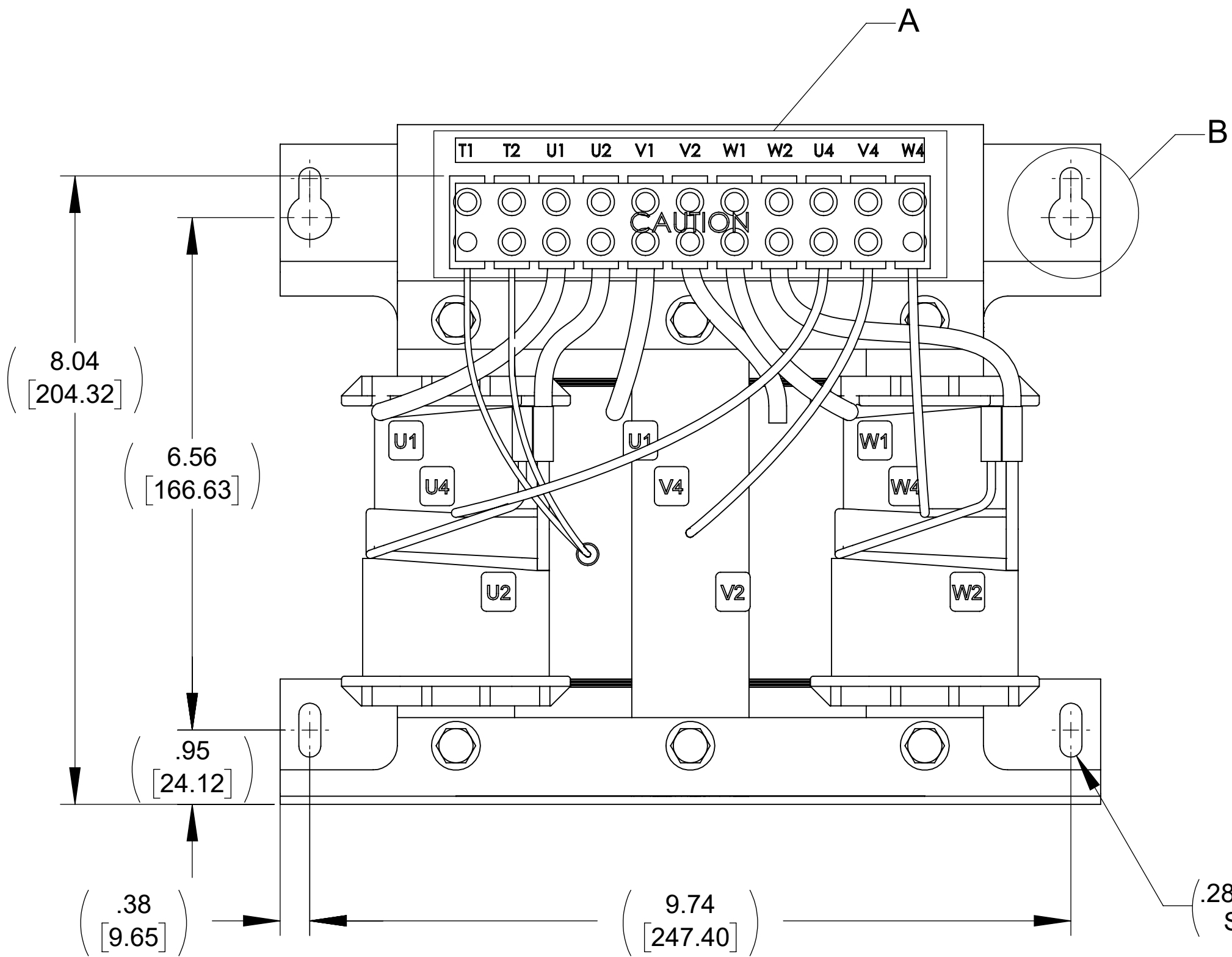
TOP VIEW



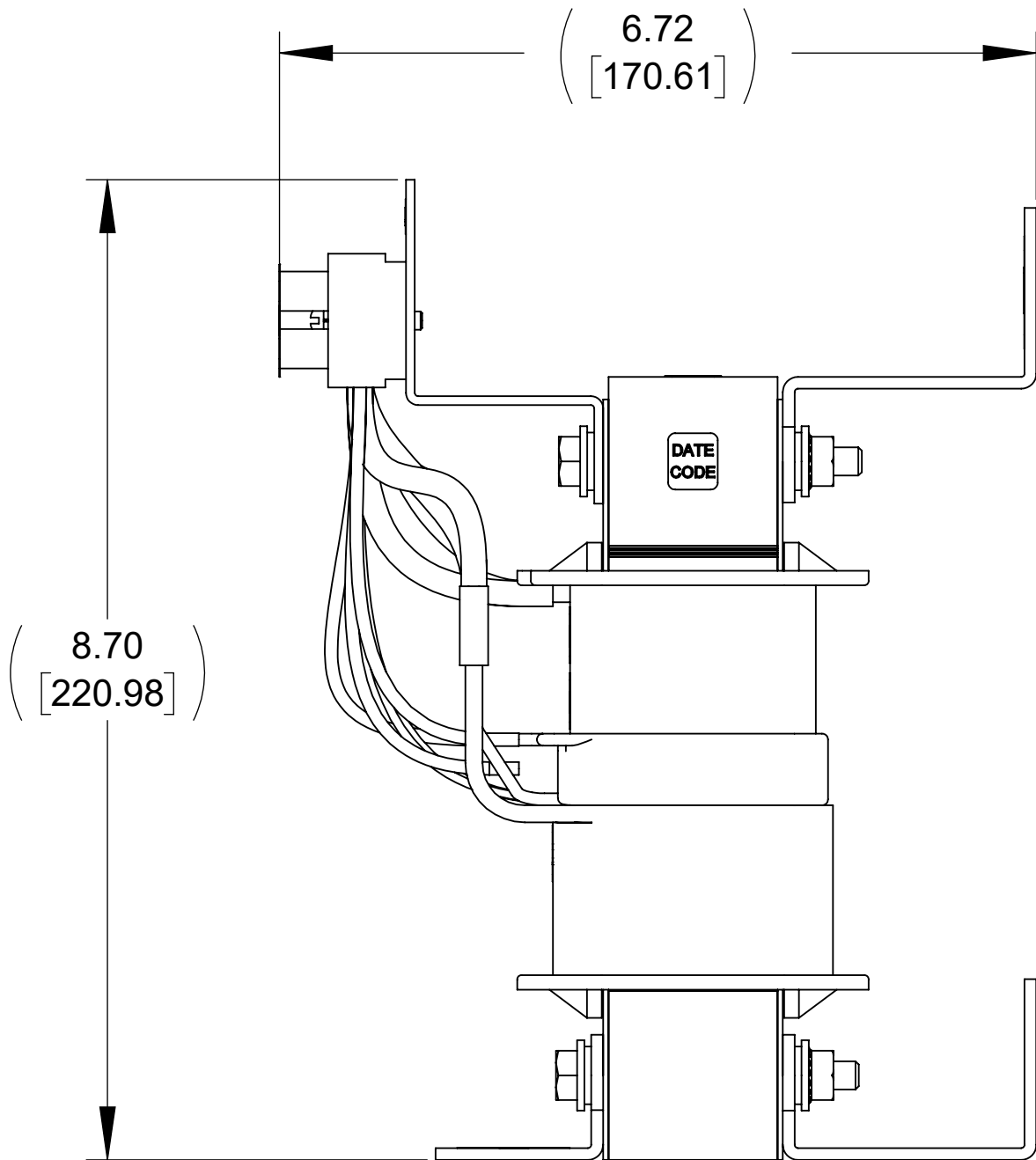
BOTTOM VIEW



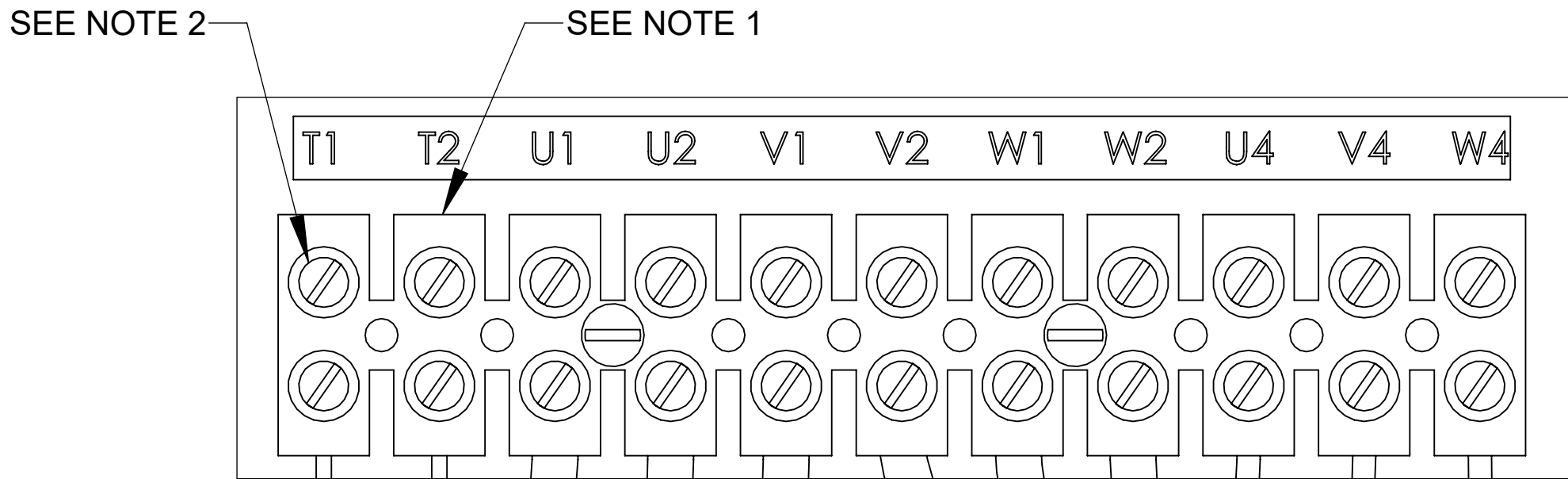
DETAIL B  
(2 PLACES)



FRONT VIEW




SIDE VIEW



DETAIL A  
CUSTOMER CONNECTION  
DETAIL VIEW

NOTES:

1. TERMINAL WIRE SIZE: 4-14 AWG.
2. TIGHTEN TERMINAL BLOCK SCREWS TO 16 IN/LBS. TORQUE.
3. REFER TO USER MANUAL FOR COMPLETE INSTALLATION INSTRUCTIONS.
4. FILTER INCLUDES: CAP-531SW (QTY. 1).

THE COMPONENT, PART OR ASSEMBLY DESCRIBED IN THIS DOCUMENT MUST COMPLY WITH THE EU(EUROPEAN UNION) DIRECTIVE RoHS2		MATERIAL		CONFIDENTIAL AND PROPRIETARY INFORMATION THIS DOCUMENT CONTAINS CONFIDENTIAL AND PROPRIETARY INFORMATION OF MTE CORPORATION AND MAY NOT BE USED, COPIED OR DISCLOSED TO OTHERS EXCEPT WITH THE AUTHORIZED WRITTEN PERMISSION OF MTE CORPORATION			
CONTAINS <0.1% OF ANY SVHC BY WEIGHT PER REACH REGULATION				DESCRIPTION			
<div>UNLESS OTHERWISE SPECIFIED DIMENSIONS ARE IN INCHES [MM] TOLERANCES ARE:</div> <div>ANGLES: ± 1 °</div> <div>1 PLACE .X: ± .1 [2.5]</div> <div>2 PLACE .XX: ± .03 [0.76]</div> <div>3 PLACE .XXX: ± .010 [0.254]</div> <div><div>N83 W13330 Leon Road Menomonee Falls, WI 53051 USA 800.455-4683 262.253.8200</div></div>		DRAWN	DATE	SWG 45A 208-240V 2-8kHz FILTER, OPEN PANEL			
		KV	5/14/19				
		CHECKED	DATE				
		KV	5/15/19				
		APPROVED	DATE	SIZE	DWG No.	REV	
		AK	09/23/19	D	CD SWGM0045A	00	
				SCALE	2:3	SHEET 1 OF 1	