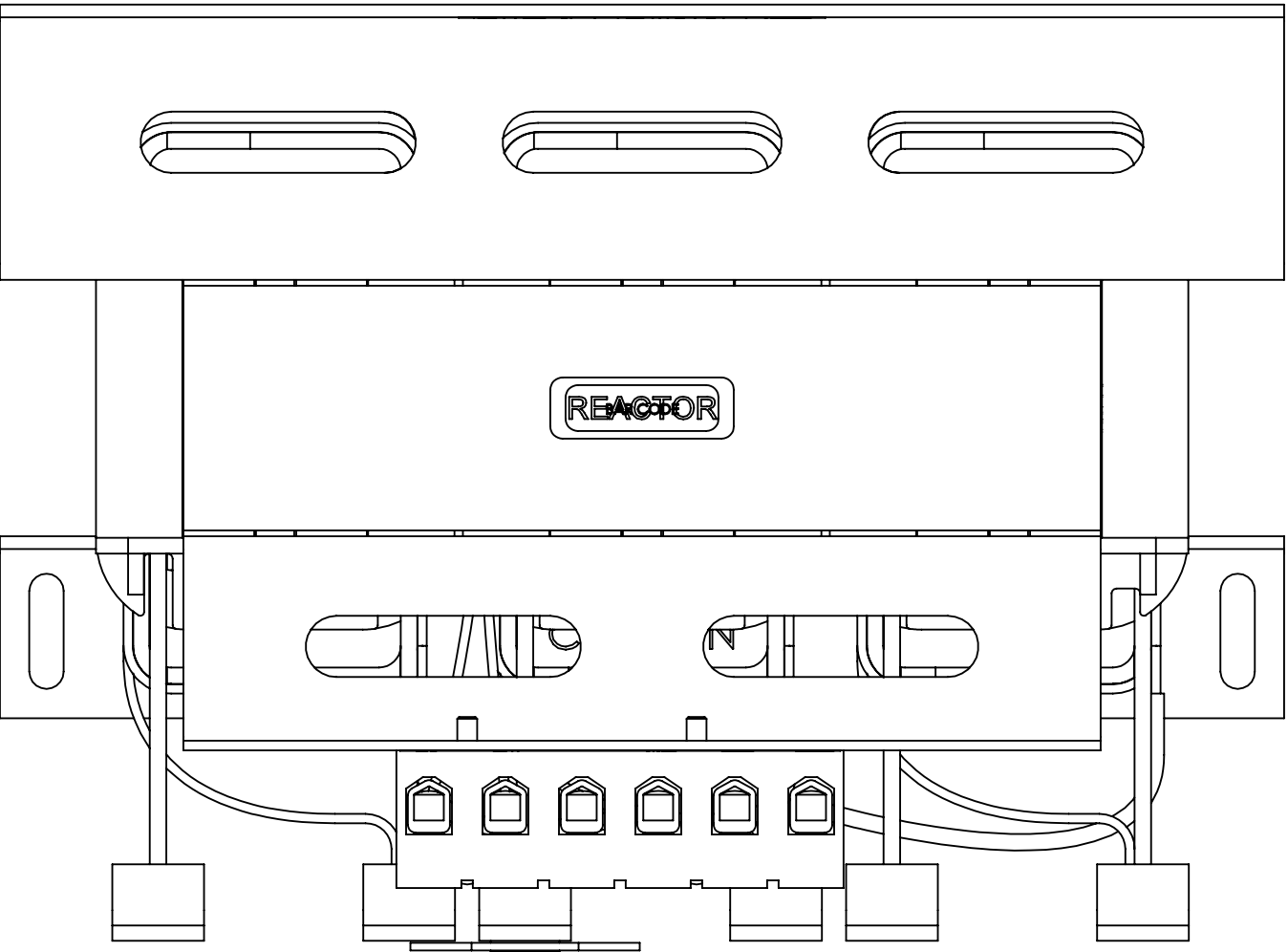
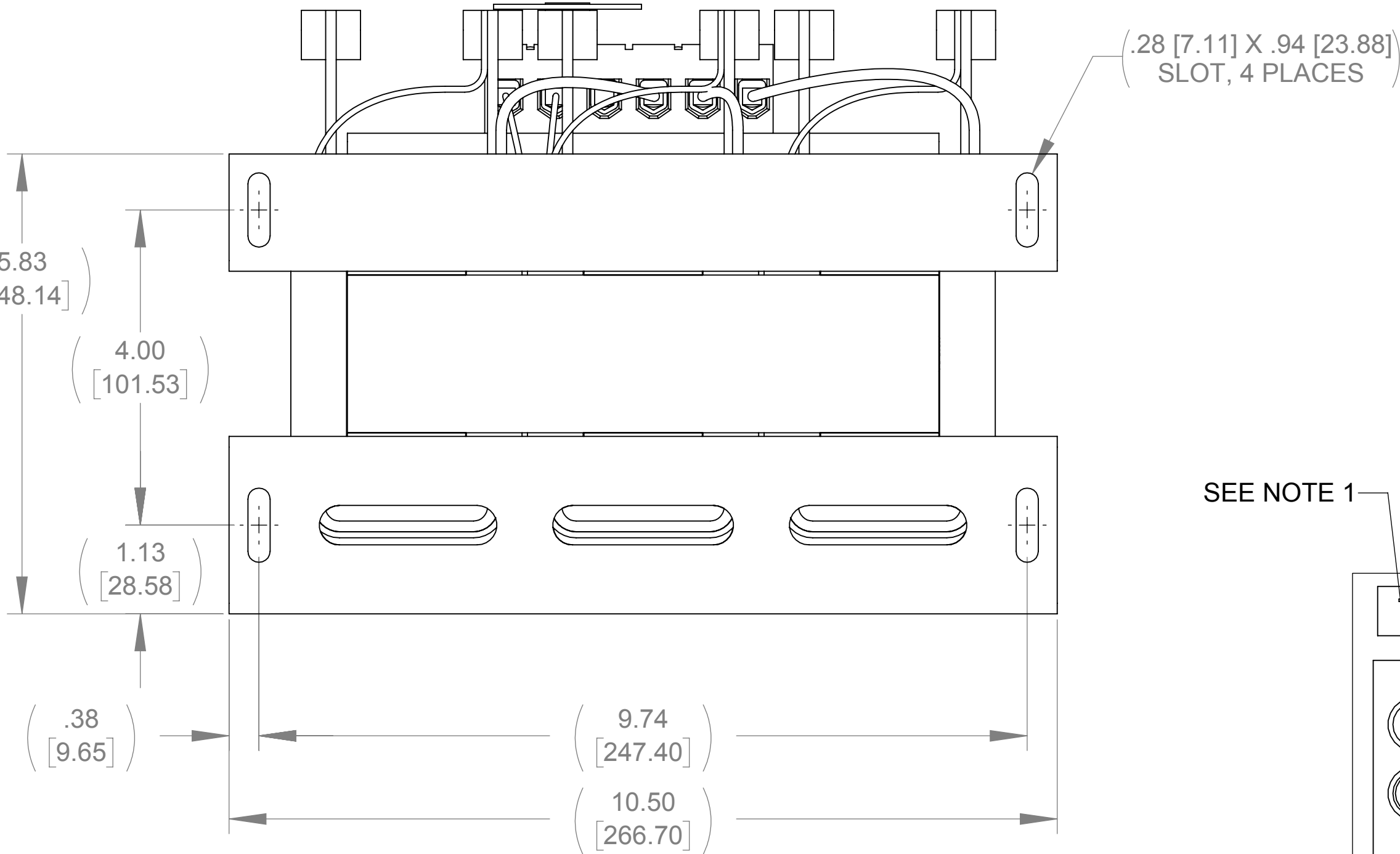


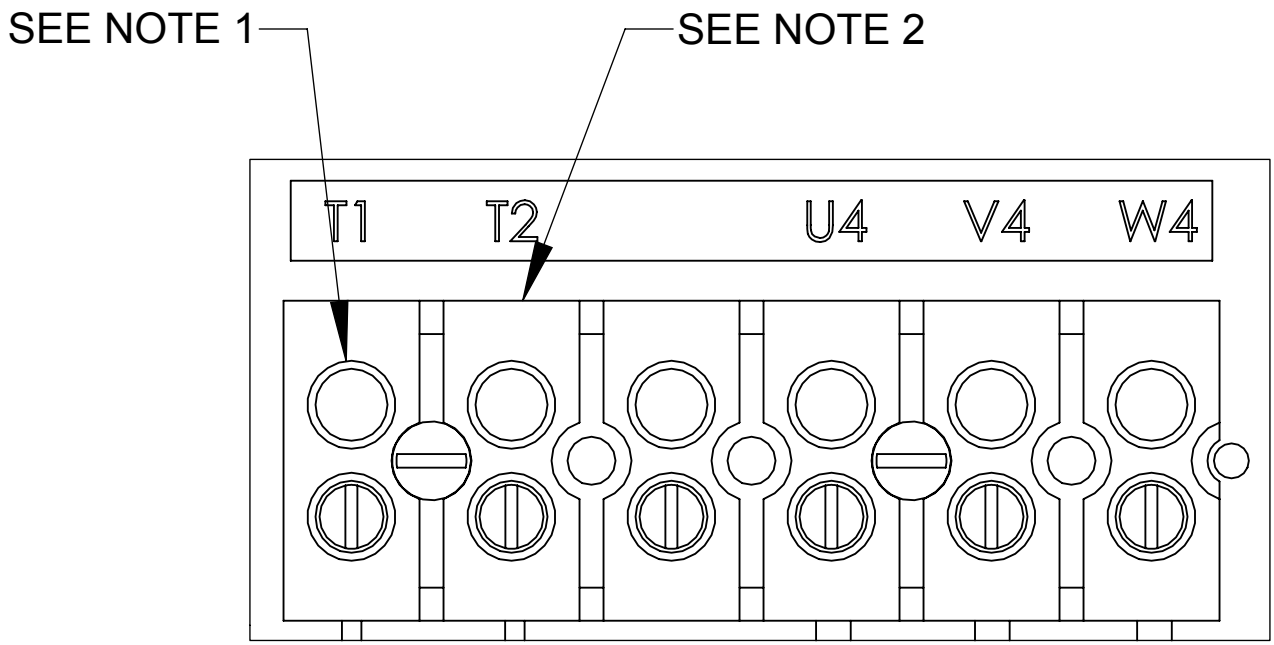
APPROX. WEIGHT  
(LBS)  
40



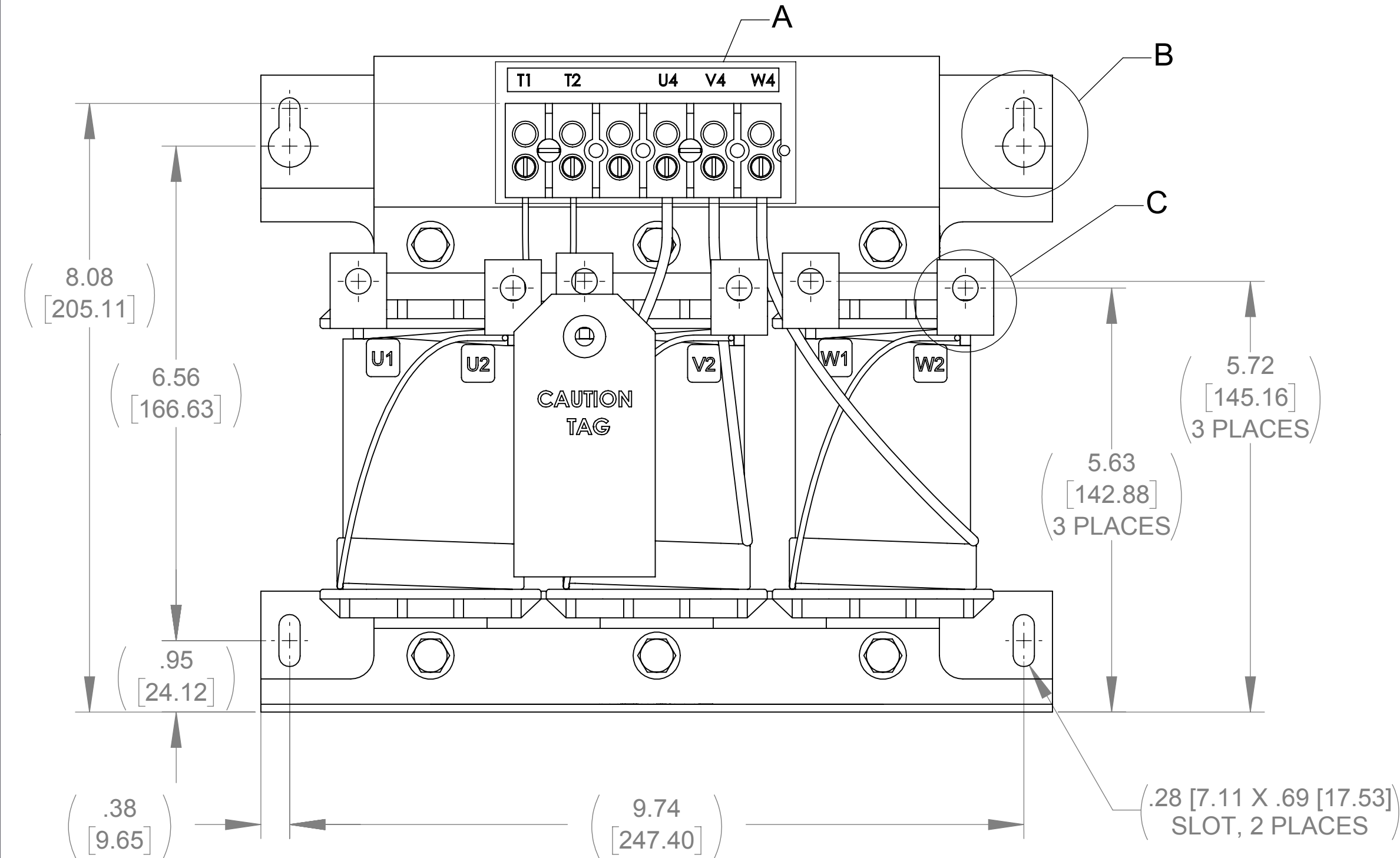
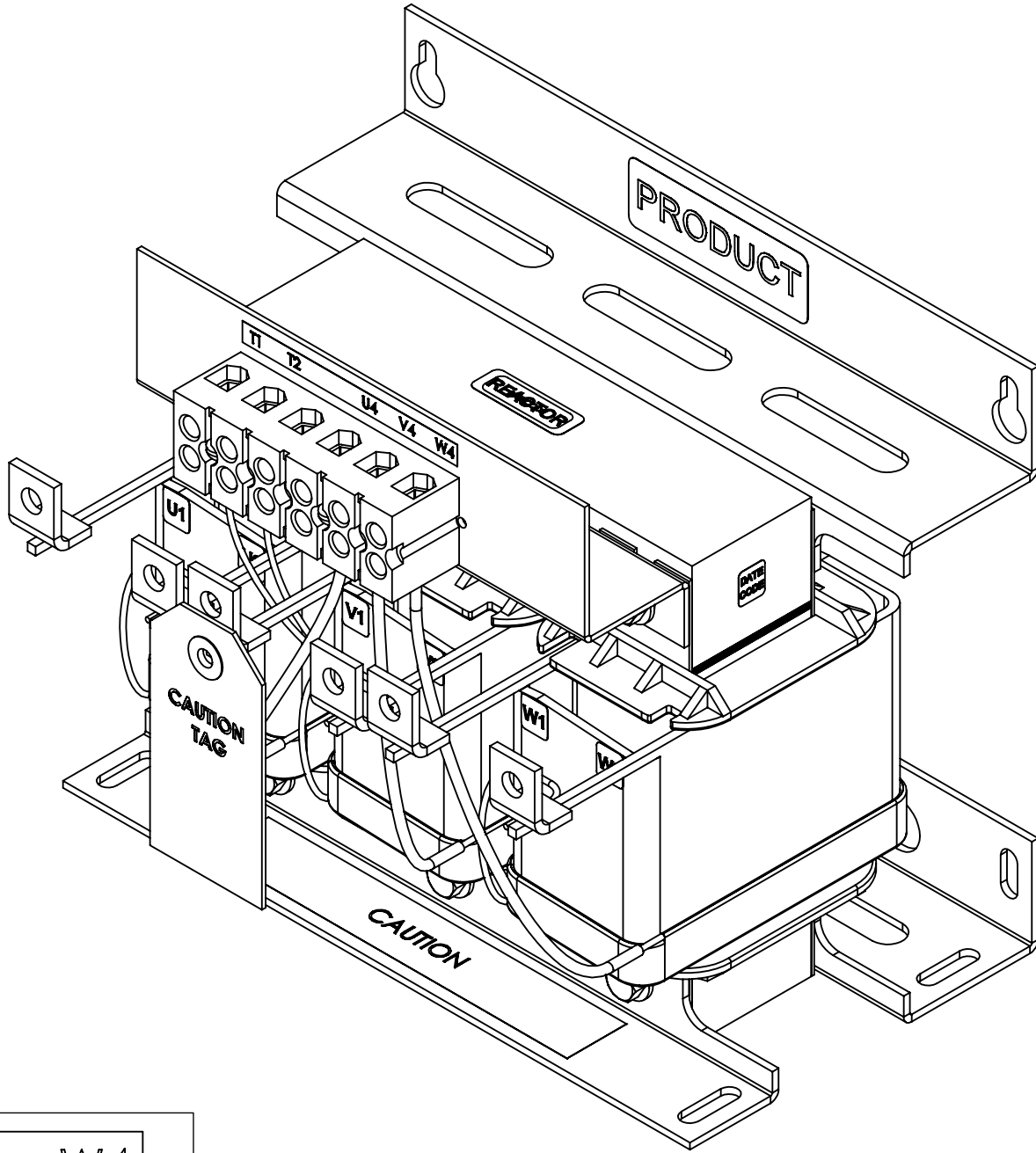
TOP VIEW



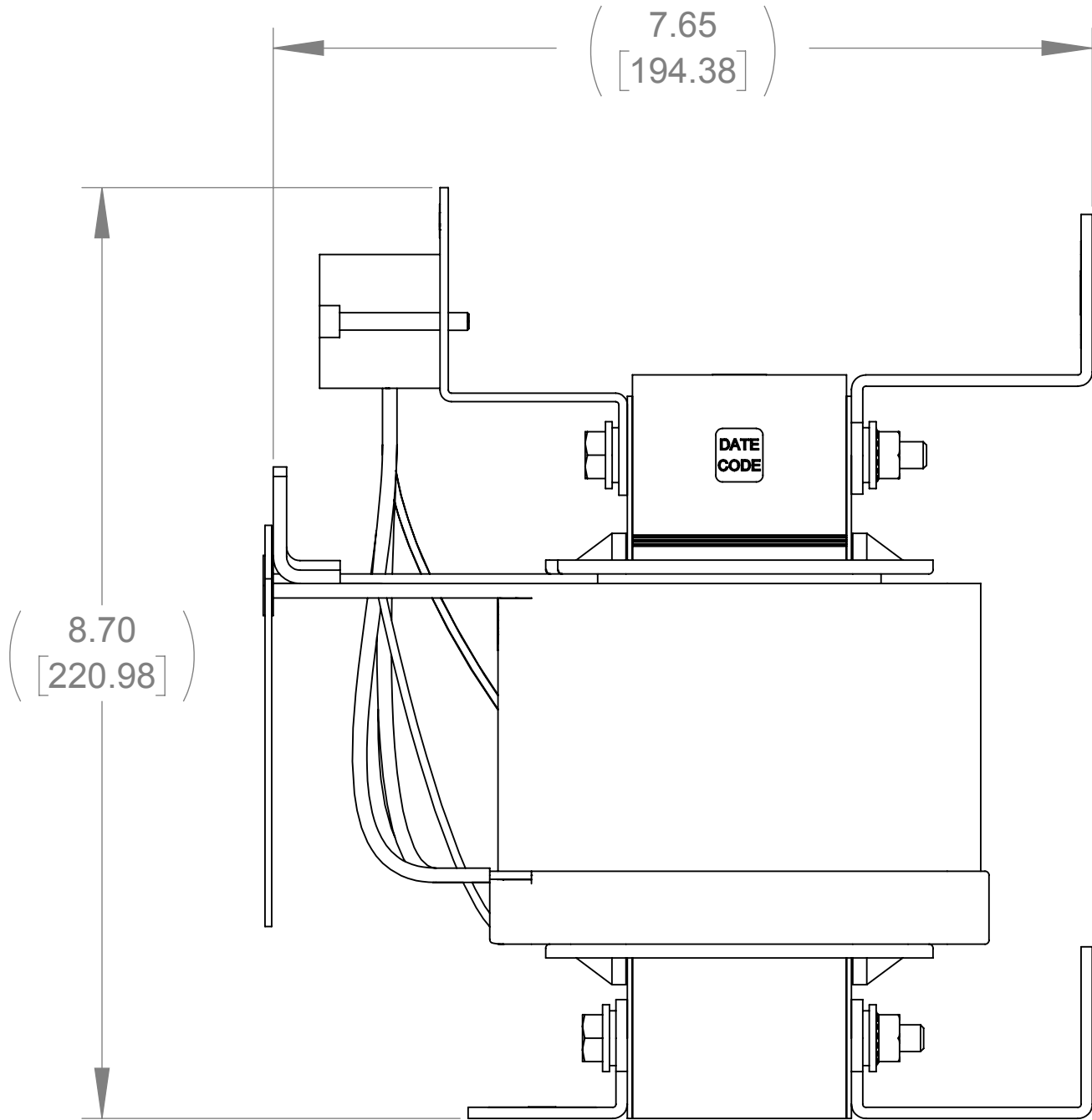
BOTTOM VIEW



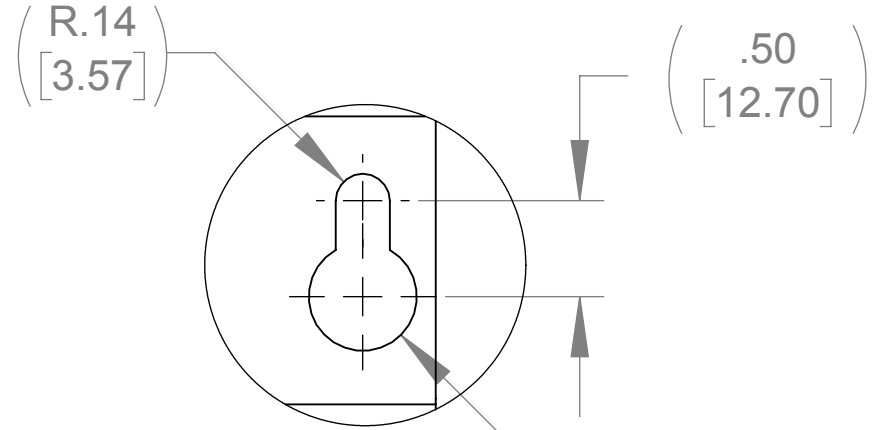
DETAIL A  
CUSTOMER CONNECTION  
DETAIL VIEW



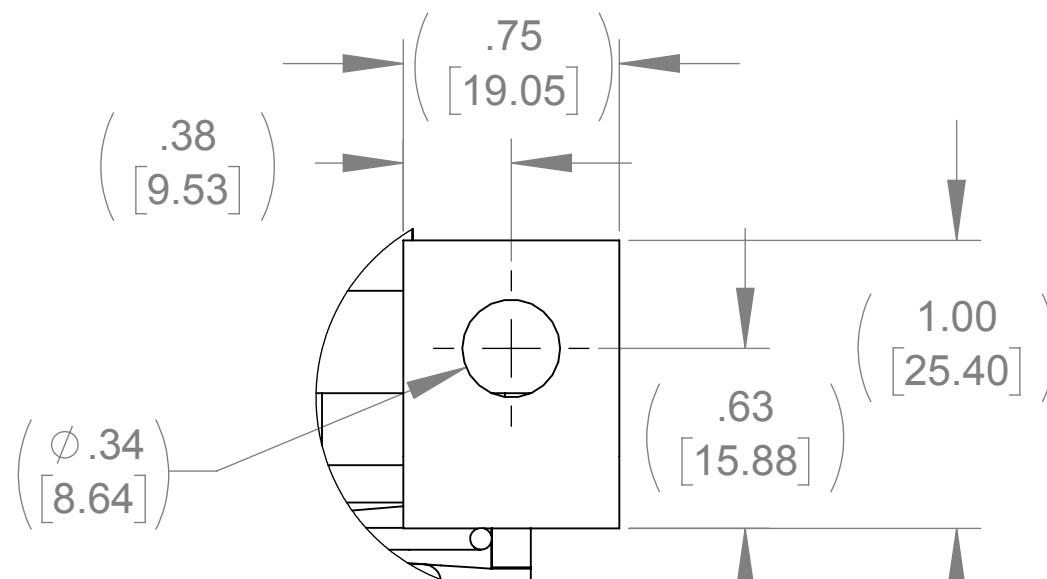
FRONT VIEW



SIDE VIEW



DETAIL B  
(2 PLACES)



DETAIL C  
CUSTOMER CONNECTION  
DETAIL VIEW  
(6 PLACES)

NOTES:

1. TIGHTEN TERMINAL BLOCK SCREWS TO 16 IN/LBS. TORQUE.
2. TERMINAL WIRE SIZE: 4-14 AWG.
3. FILTER INCLUDES: CAP-526SW (QTY. 1).

THE COMPONENT, PART OR ASSEMBLY DESCRIBED IN THIS DOCUMENT MUST COMPLY WITH THE EU(EUROPEAN UNION) DIRECTIVE RoHS2		MATERIAL		CONFIDENTIAL AND PROPRIETARY INFORMATION THIS DOCUMENT CONTAINS CONFIDENTIAL AND PROPRIETARY INFORMATION OF MTE CORPORATION AND MAY NOT BE USED, COPIED OR DISCLOSED TO OTHERS EXCEPT WITH THE AUTHORIZED WRITTEN PERMISSION OF MTE CORPORATION		
CONTAINS <0.1% OF ANY SVHC BY WEIGHT PER REACH REGULATION				DESCRIPTION		
UNLESS OTHERWISE SPECIFIED DIMENSIONS ARE IN INCHES [MM] TOLERANCES ARE:  ANGLES: ± 1 °  1 PLACE .X: ± .1 [2.5]  2 PLACE .XX: ± .03 [0.76]  3 PLACE .XXX: ± .010 [0.254]		<b>MTE</b> POWER QUALITY. SOLVED.  N83 W13330 Leon Road Menomonee Falls, WI 53051 USA 800.455-4683 262.253-8200		DRAWN MN	DATE 07/26/18	SIZE <b>D</b>
				CHECKED MN	DATE 07/26/18	
				APPROVED TL	DATE 10/09/18	
				DWG No. <b>CD SWGM0035E</b>		REV <b>00</b>
				SCALE 2:3		SHEET 1 OF 1