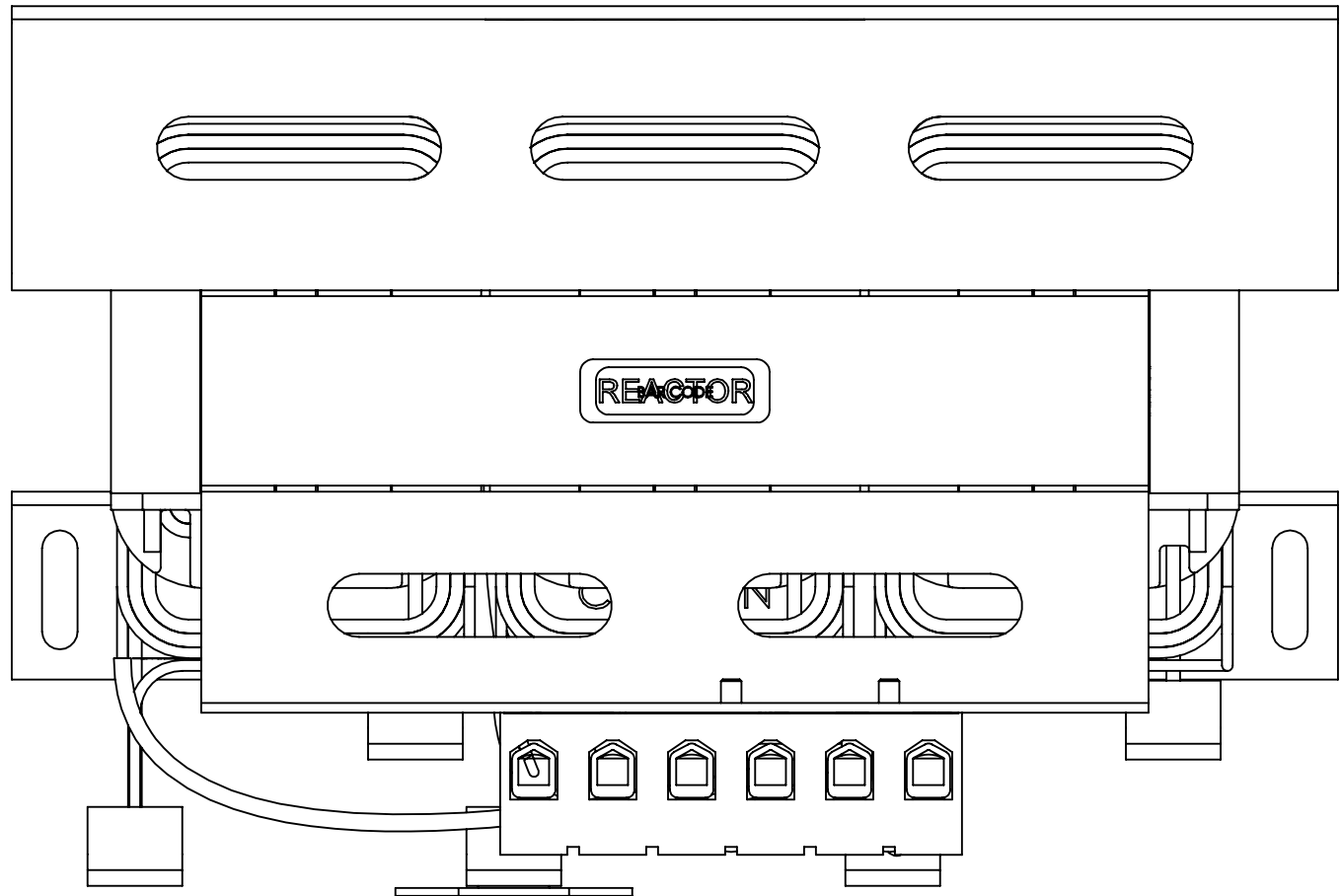
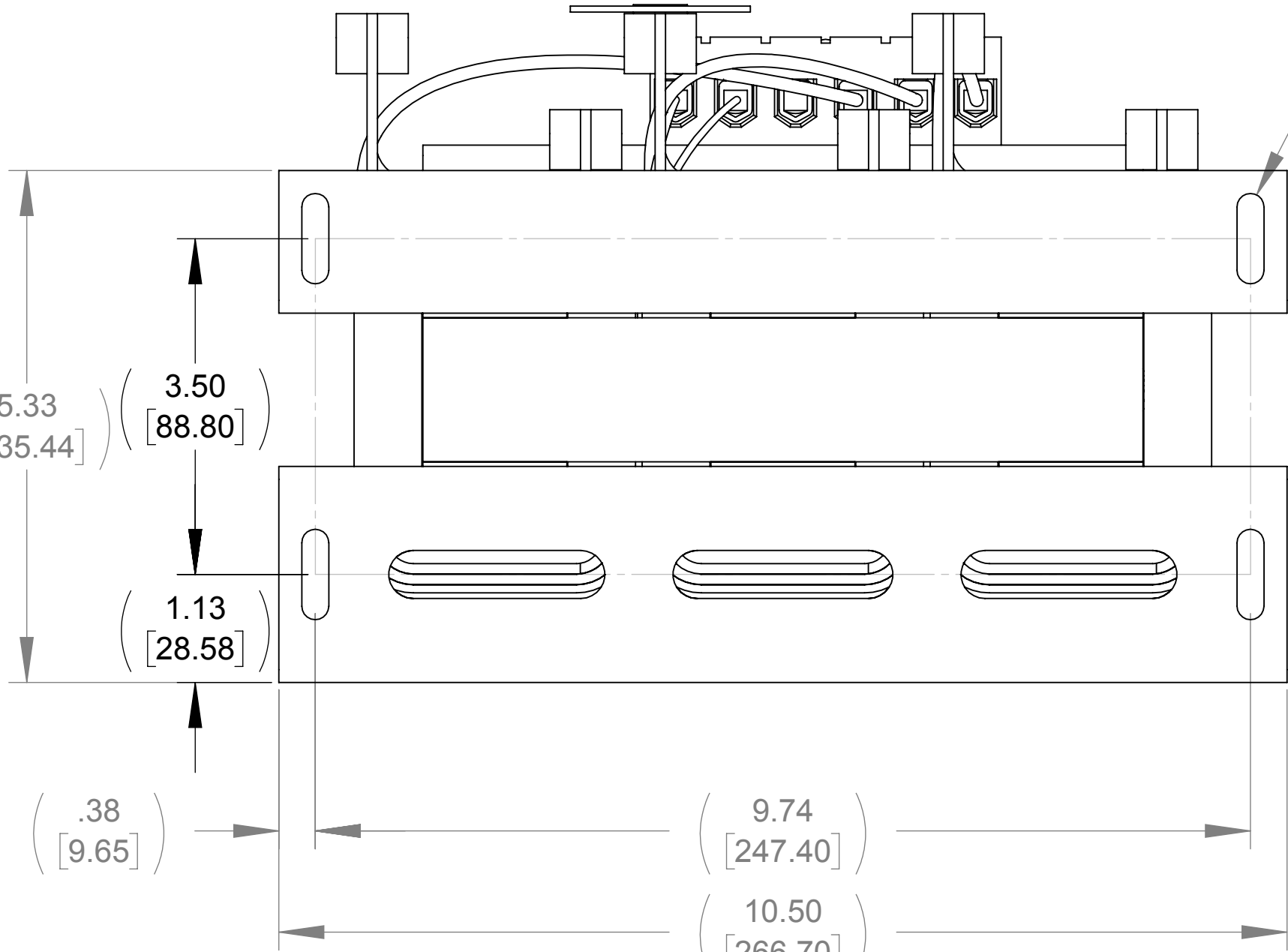


WEIGHT (LBS)
39

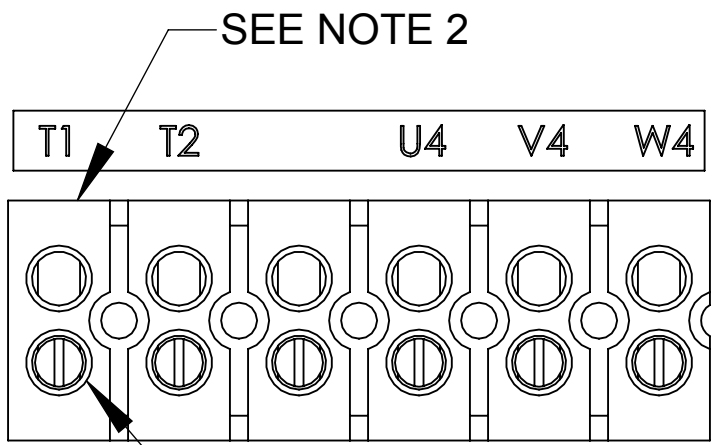
ECO No	DESCRIPTION	REV BY	DATE
M9353	UPDATED LABEL GRAPHICS	JT	11/03/14



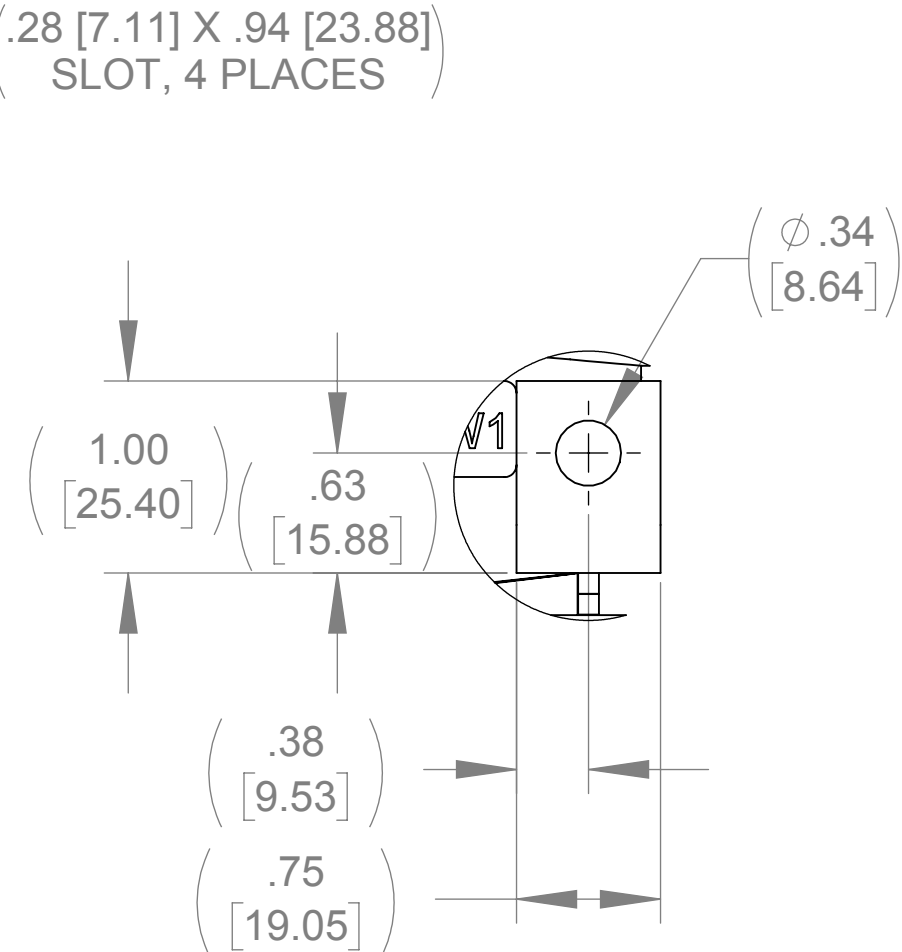
TOP VIEW



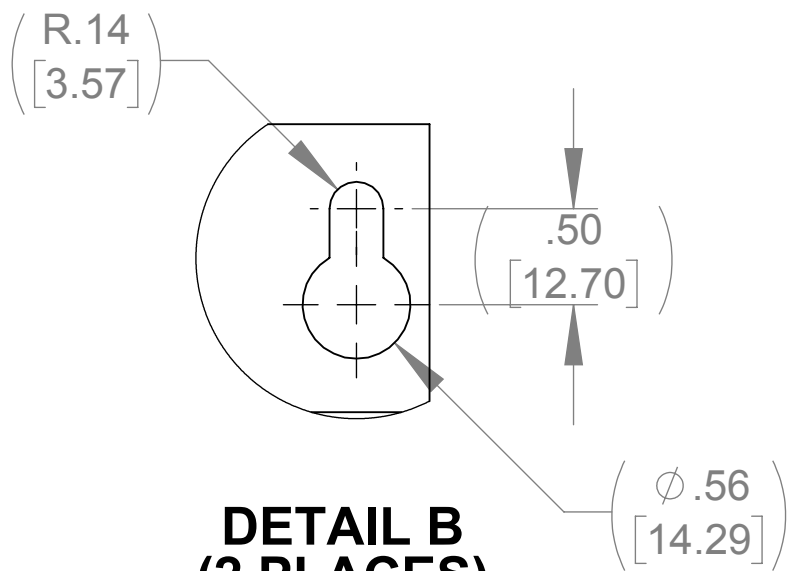
BOTTOM VIEW



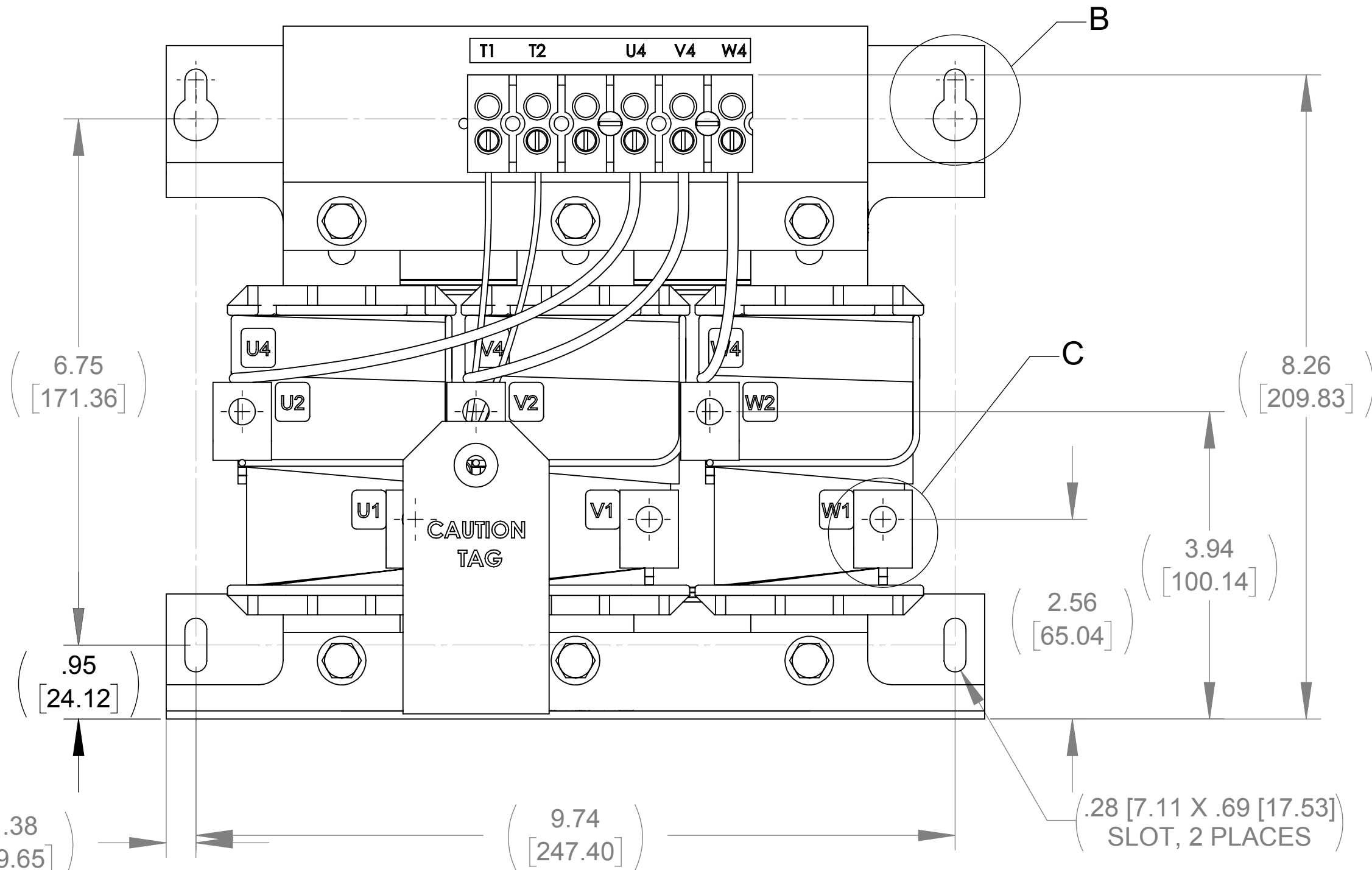
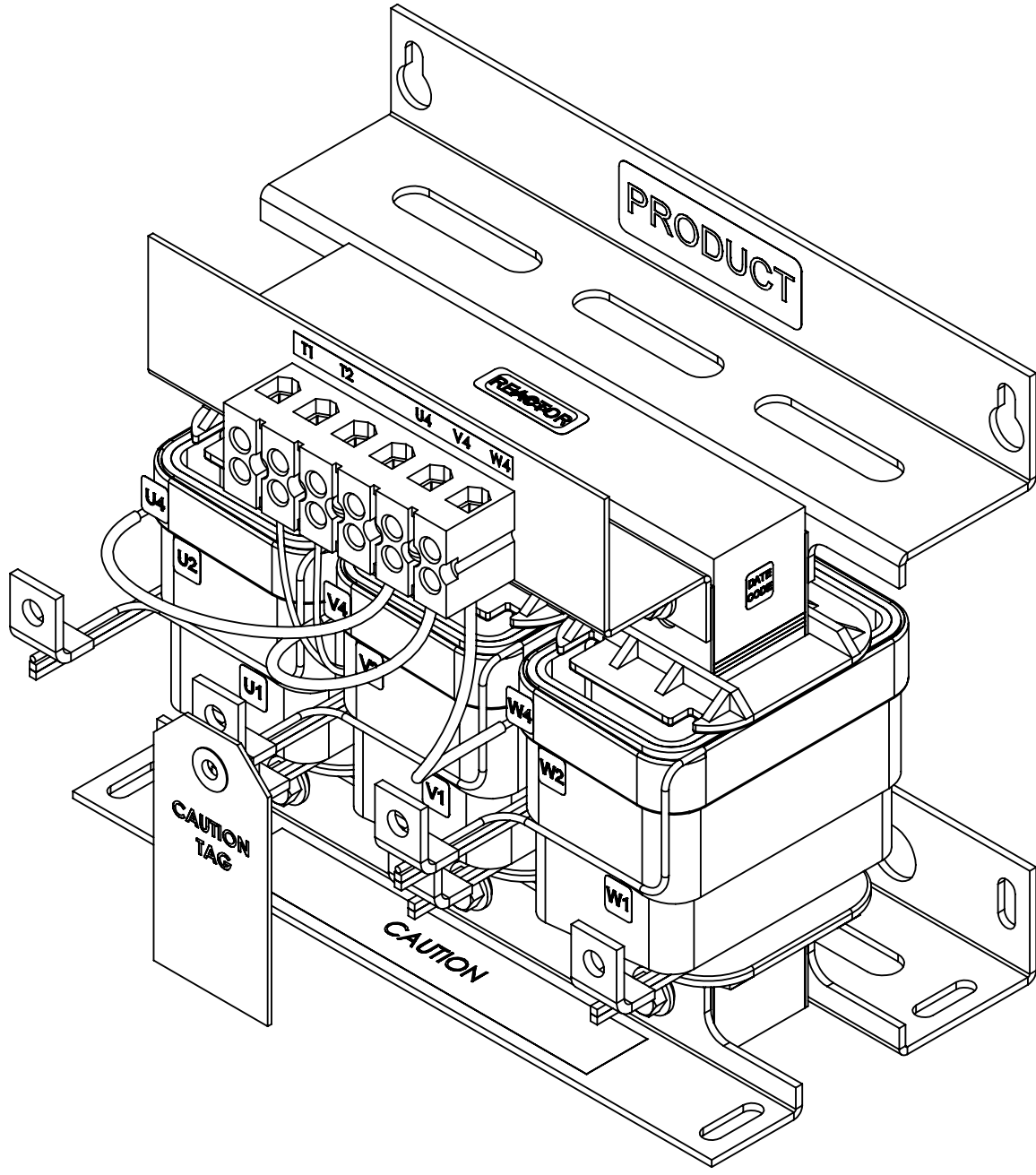
CUSTOMER CONNECTION
DETAIL VIEW (THERMAL)



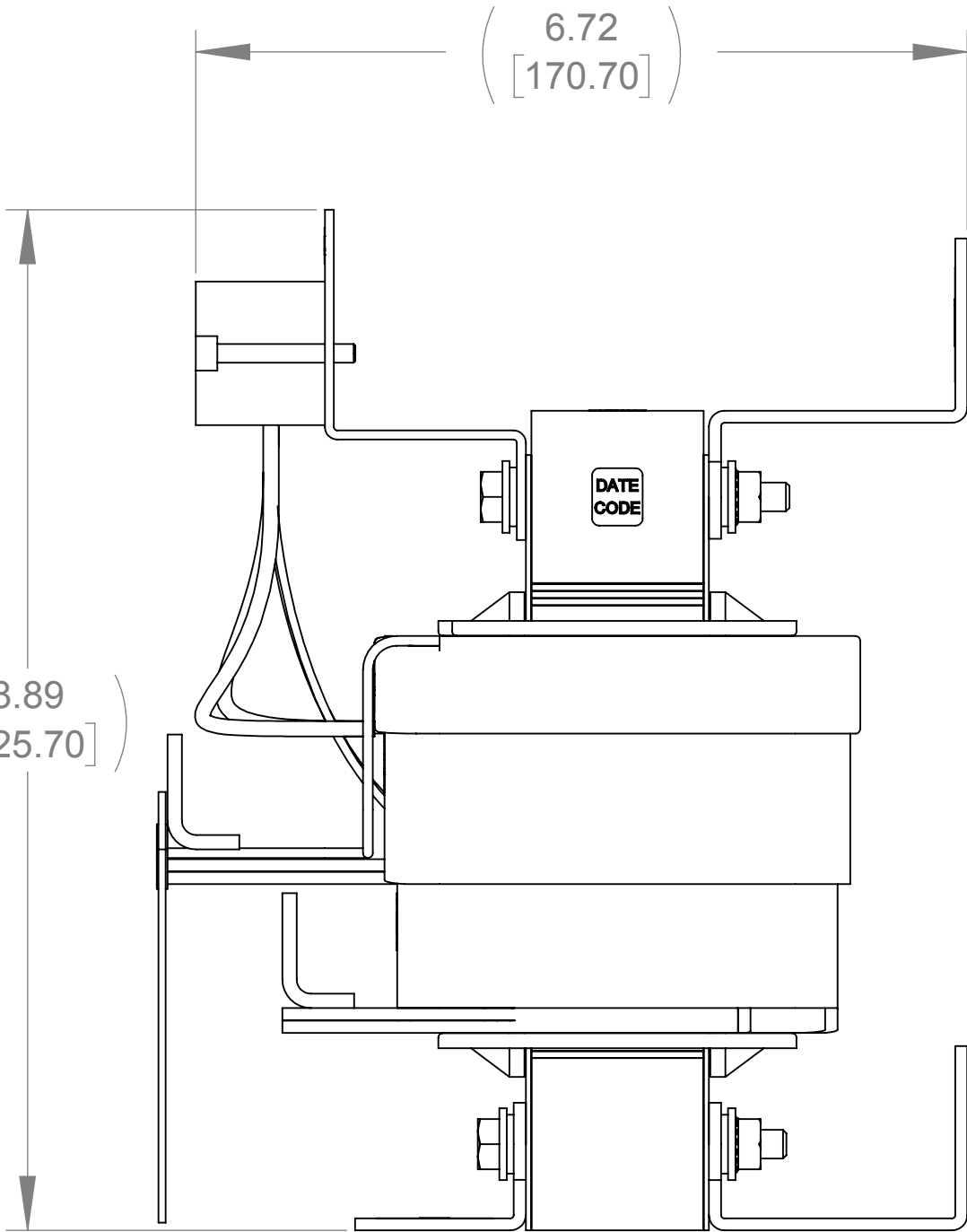
DETAIL C
(6 PLACES)



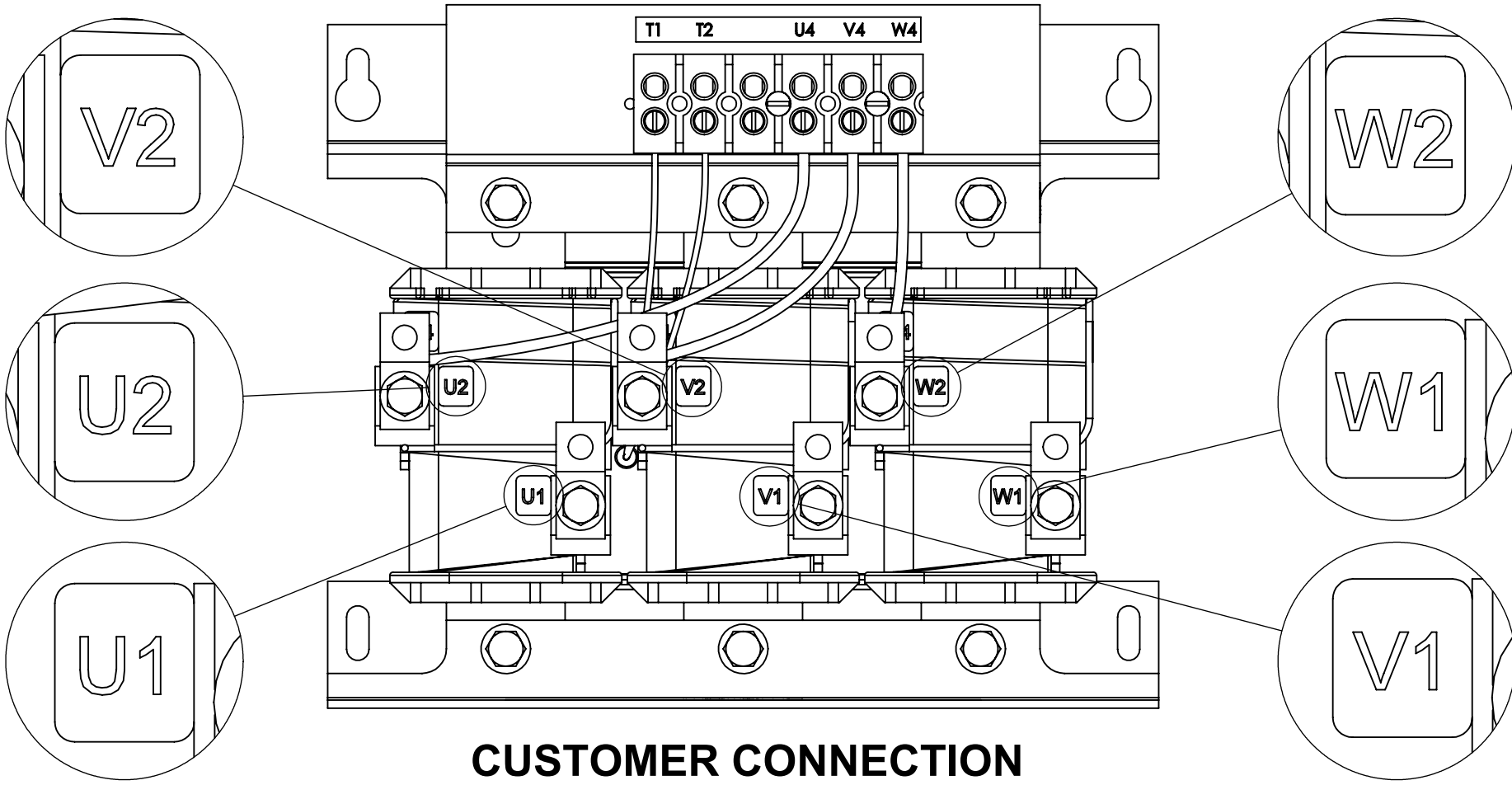
DETAIL B
(2 PLACES)



FRONT VIEW




RIGHT SIDE VIEW



CUSTOMER CONNECTION
DETAIL VIEW

- NOTES:
1. TIGHTEN TERMINAL BLOCK SCREWS TO 16 IN/LBS. TORQUE, MAX.
 2. TERMINAL WIRE SIZE: 4-14 AWG.
 3. FILTER REQUIRES: CAP-510SW (QTY. 1).

THE COMPONENT, PART OR ASSEMBLY DESCRIBED IN THIS DOCUMENT MUST COMPLY WITH THE EU(EUROPEAN UNION) DIRECTIVE RoHS2		MATERIAL		CONFIDENTIAL AND PROPRIETARY INFORMATION THIS DOCUMENT CONTAINS CONFIDENTIAL AND PROPRIETARY INFORMATION OF MTE CORPORATION AND MAY NOT BE USED, COPIED OR DISCLOSED TO OTHERS EXCEPT WITH THE AUTHORIZED WRITTEN PERMISSION OF MTE CORPORATION			
CONTAINS <0.1% OF ANY SVHC BY WEIGHT PER REACH REGULATION				DESCRIPTION			
UNLESS OTHERWISE SPECIFIED DIMENSIONS ARE IN INCHES [MM] TOLERANCES ARE: ANGLES: ± 1 ° 1 PLACE .X: ± .1 [2.5] 2 PLACE .XX: ± .03 [0.76] 3 PLACE .XXX: ± .010 [0.254]		 N83 W13330 Leon Road Menomonee Falls, WI 53051 USA 800.455.4683 262.253.8200		SWG 35A 380-480V 2-8kHz			
		DRAWN	DATE	SIZE	DWG No.	REV	
		MN	09/16/13				
		CHECKED	DATE				
		JM	11/04/14	D	CD SWGM0035D	02	
		APPROVED	DATE				
		JM	11/04/14	SCALE	2:3	SHEET 1 OF 1	