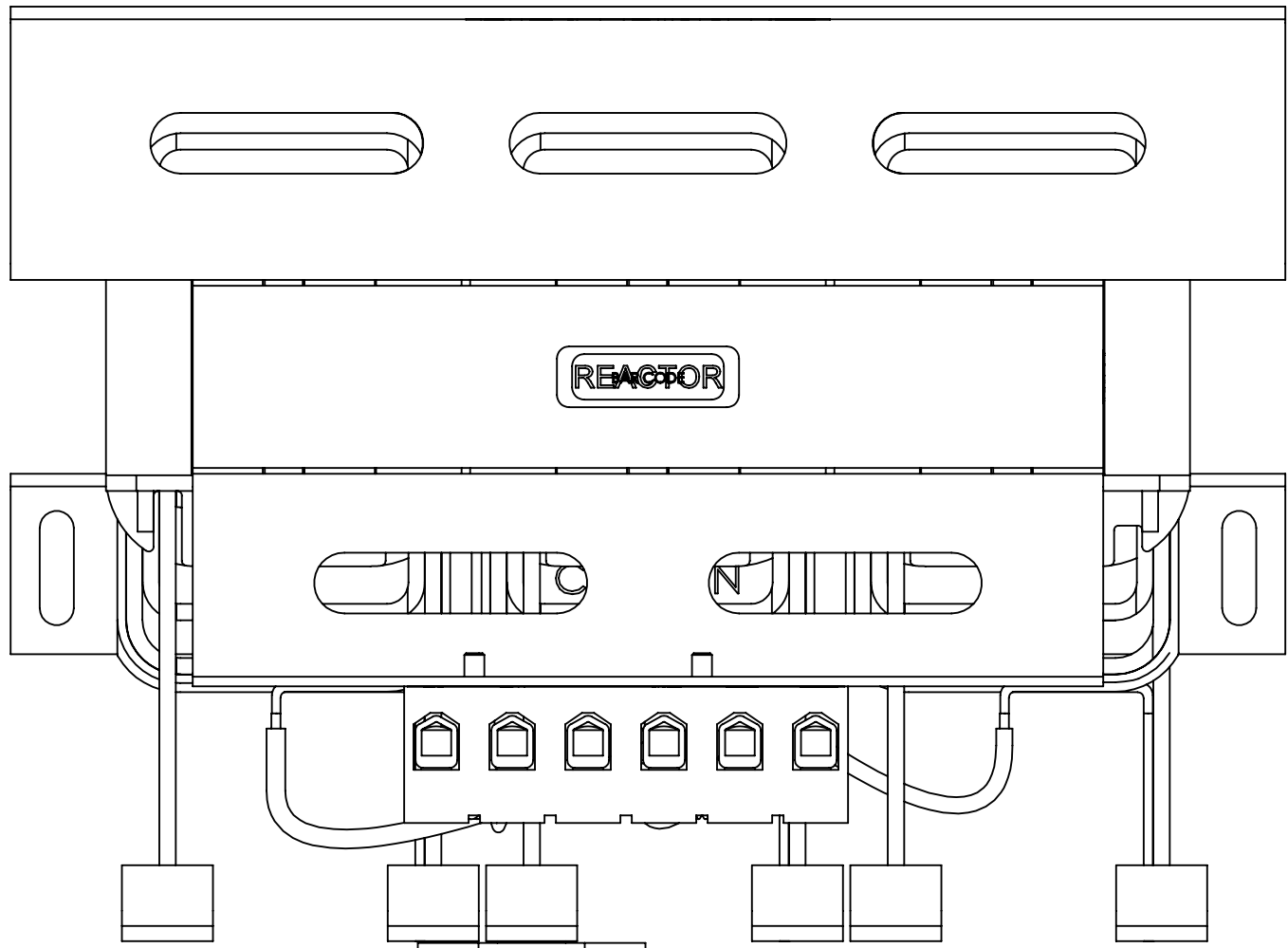
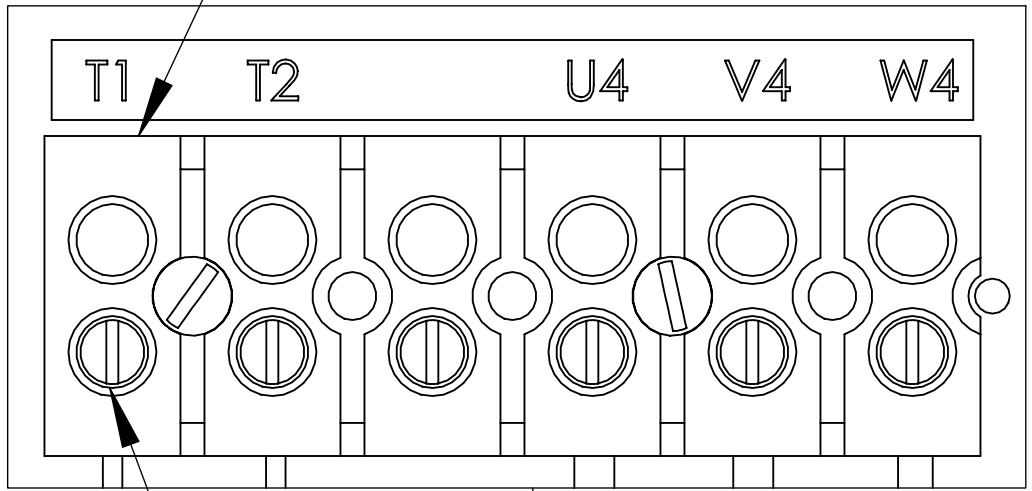


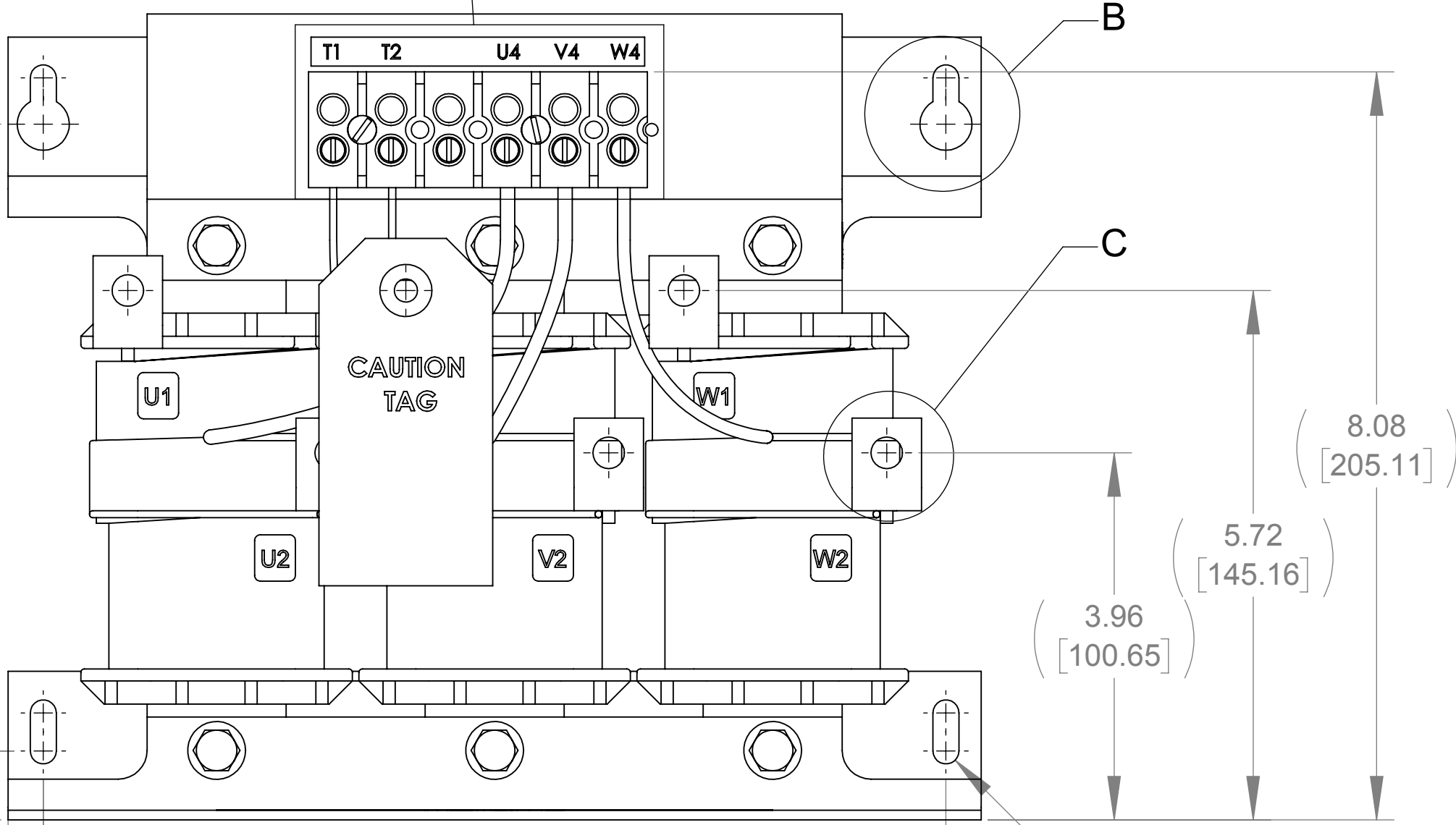
APPROX. WEIGHT
(LBS)
37.05



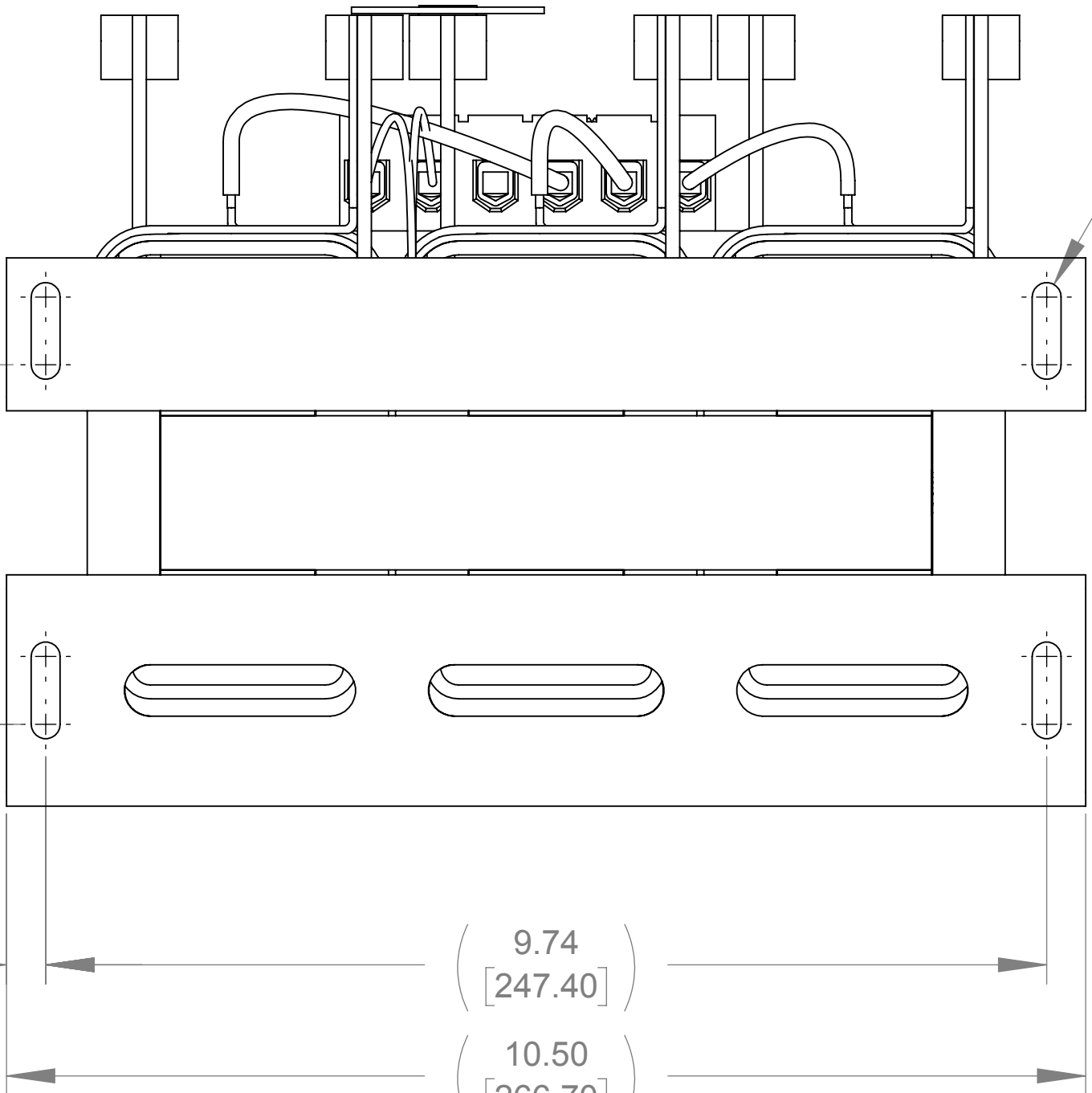
TOP VIEW



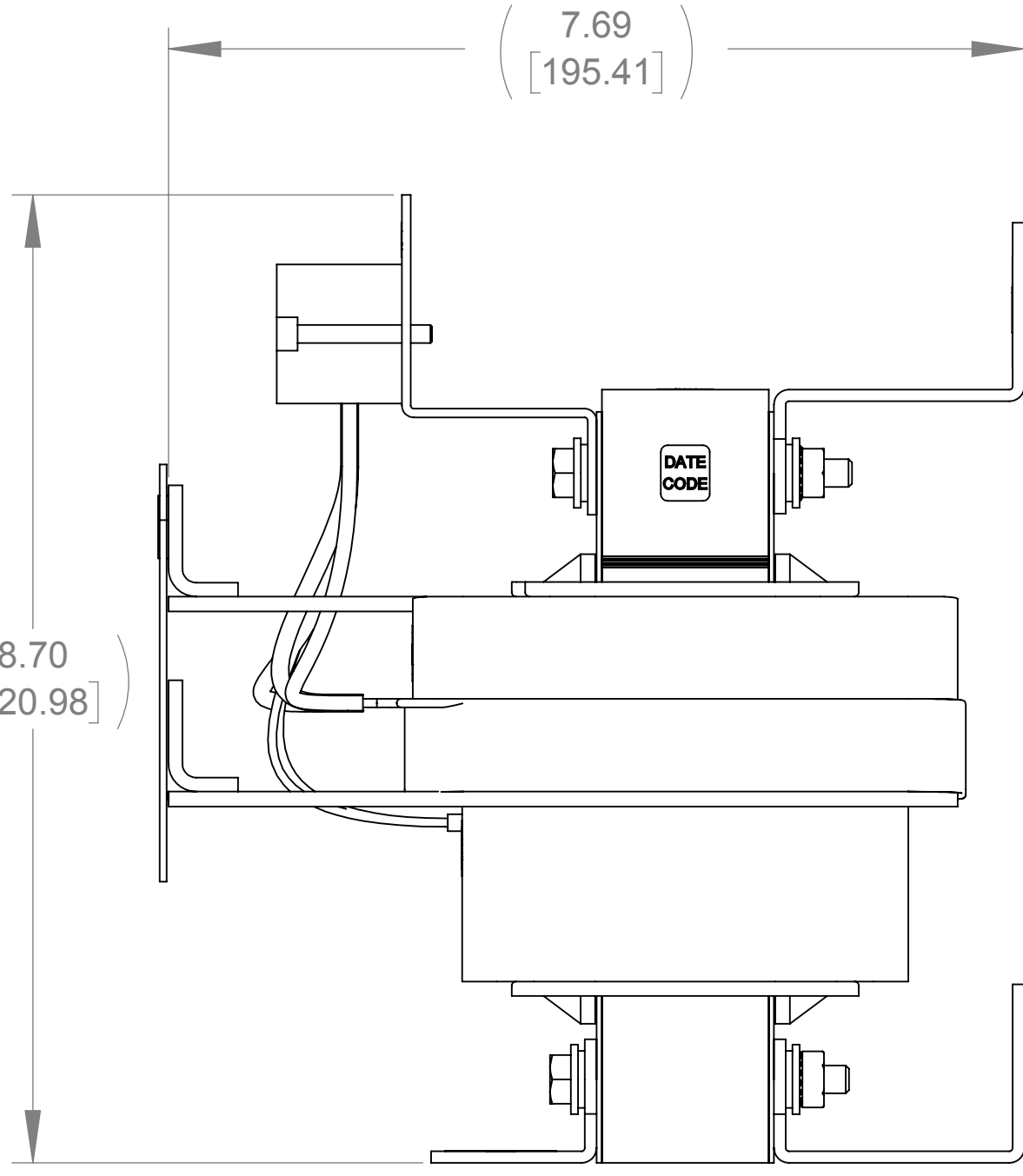
CUSTOMER CONNECTION
DETAIL VIEW (THERMAL)



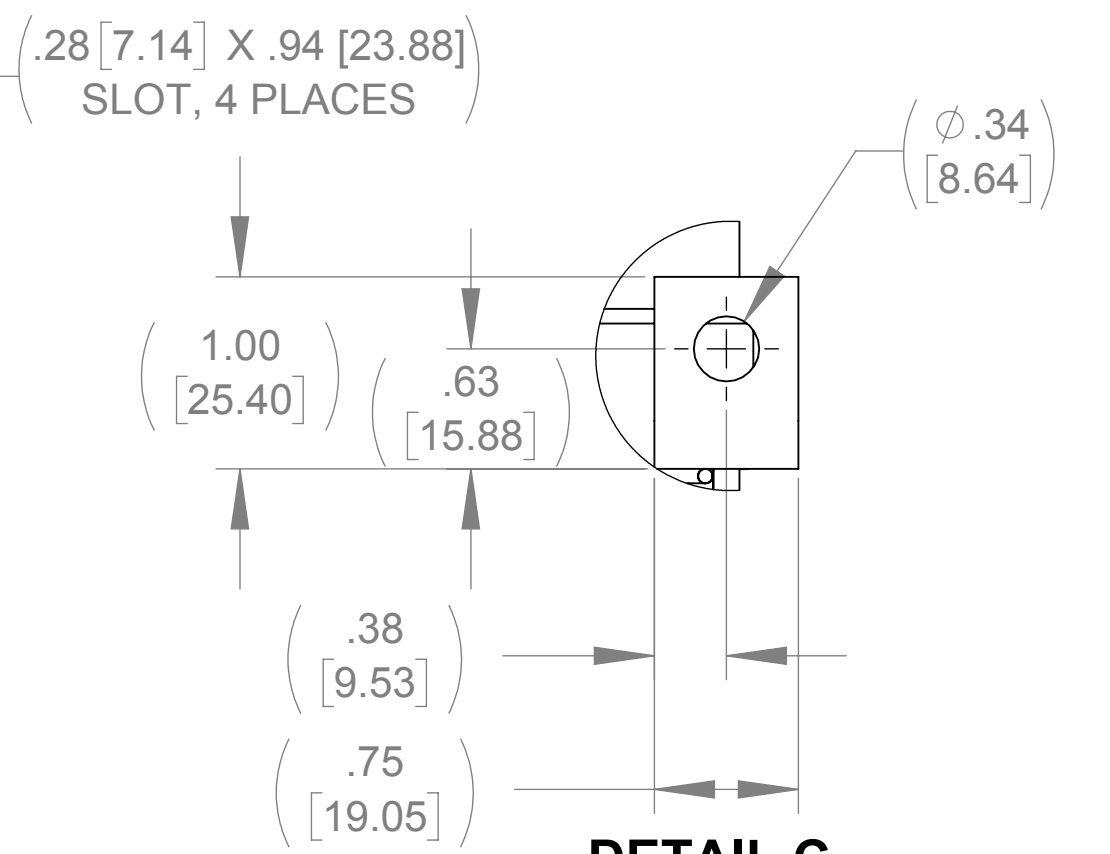
FRONT VIEW



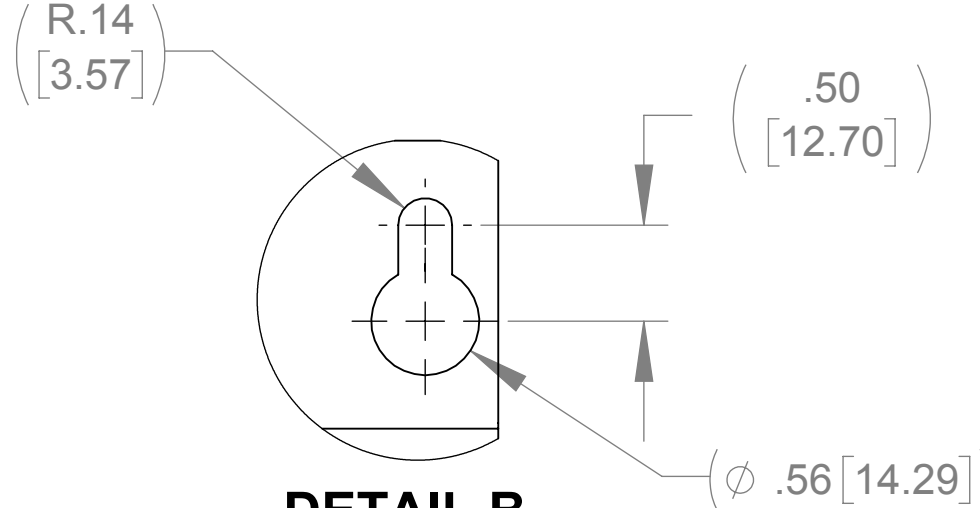
BOTTOM VIEW



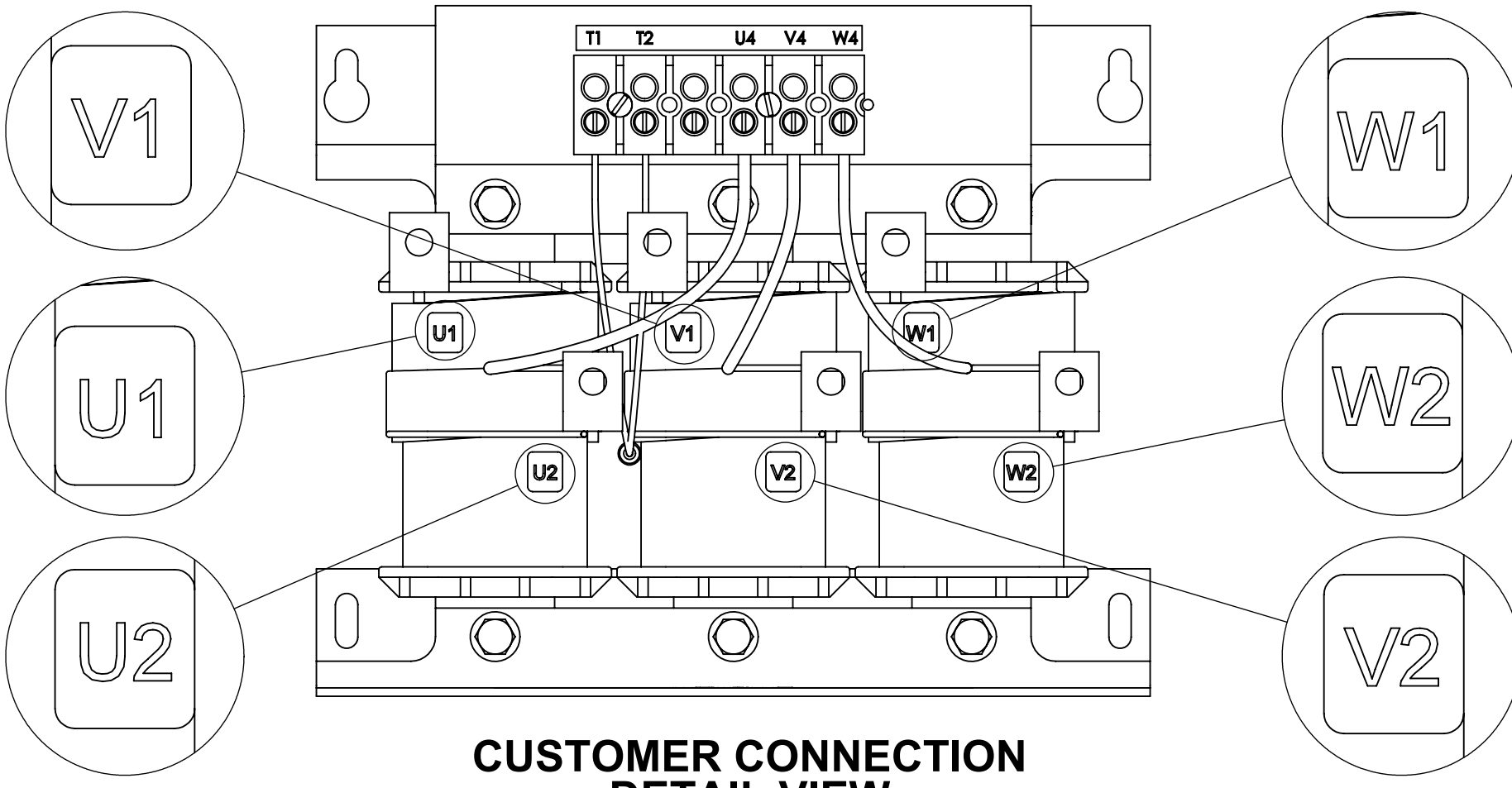
RIGHT SIDE VIEW



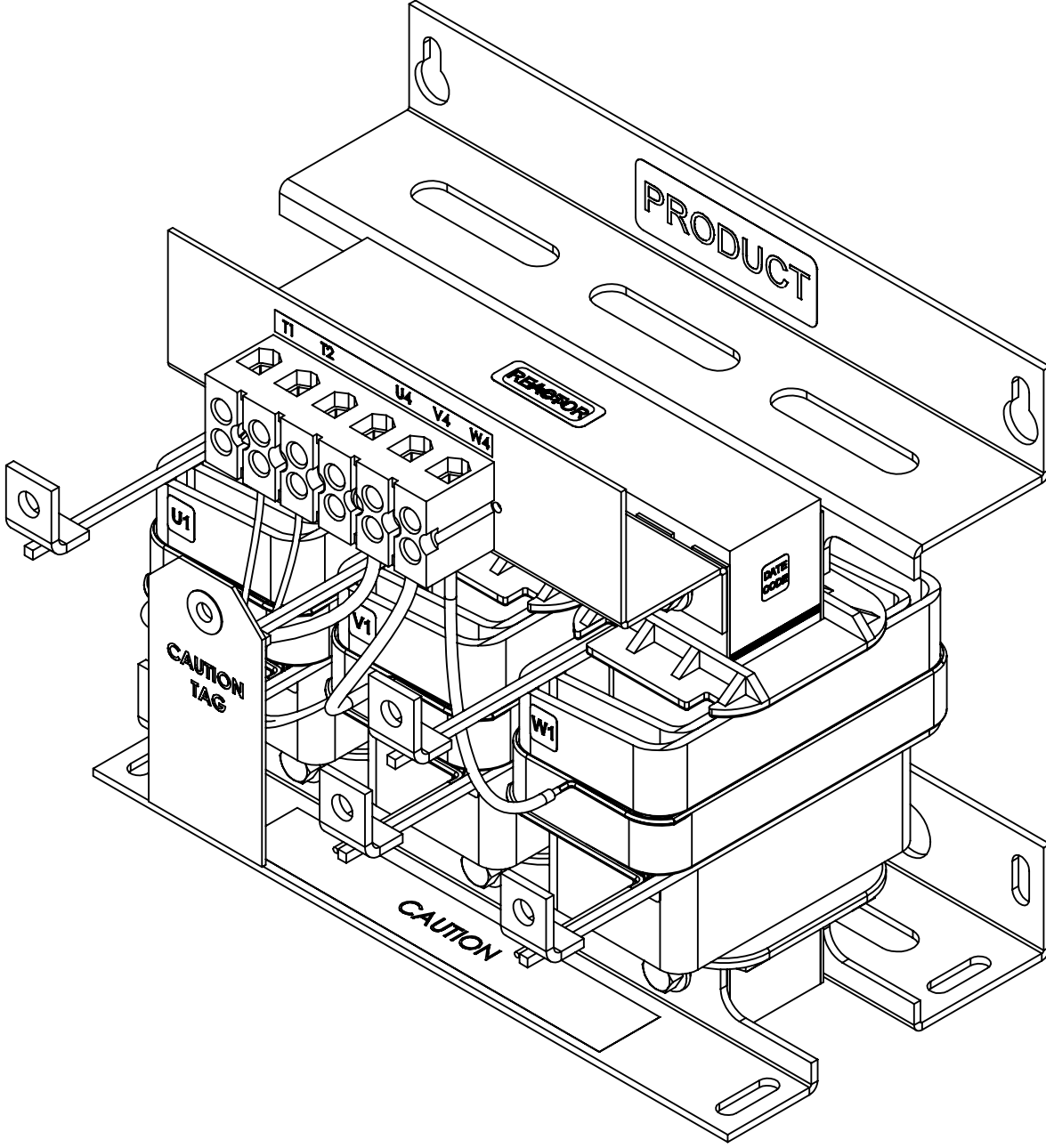
DETAIL C
(6 PLACES)



DETAIL B
(2 PLACES)




CUSTOMER CONNECTION
DETAIL VIEW



NOTES:

1. TIGHTEN TERMINAL BLOCK SCREWS TO 16 IN/LBS. TORQUE.
2. TERMINAL WIRE SIZE: 4-14 AWG.
3. FILTER INCLUDES: CAP-525SW (QTY. 1).

THE COMPONENT, PART OR ASSEMBLY DESCRIBED IN THIS DOCUMENT MUST COMPLY WITH THE EU(EUROPEAN UNION) DIRECTIVE RoHS2		MATERIAL		CONFIDENTIAL AND PROPRIETARY INFORMATION THIS DOCUMENT CONTAINS CONFIDENTIAL AND PROPRIETARY INFORMATION OF MTE CORPORATION AND MAY NOT BE USED, COPIED OR DISCLOSED TO OTHERS EXCEPT WITH THE AUTHORIZED WRITTEN PERMISSION OF MTE CORPORATION							
CONTAINS <0.1% OF ANY SVHC BY WEIGHT PER REACH REGULATION				DESCRIPTION							
<div>UNLESS OTHERWISE SPECIFIED DIMENSIONS ARE IN INCHES [MM] TOLERANCES ARE:</div> <div>ANGLES: ± 1 °</div> <div>1 PLACE .X: ± .1 [2.5]</div> <div>2 PLACE .XX: ± .03 [0.76]</div> <div>3 PLACE .XXX: ± .010 [0.254]</div> <div></div> <div>N83 W13330 Leon Road Menomonee Falls, WI 53051 USA 800.455-4683 262.253-8200</div>		DRAWN		DATE		SWG 27A 600V 2-8kHz OPEN PANEL					
		CR		06/12/18							
		CHECKED		DATE		SIZE		DWG No.		REV	
		DF		06/28/18							
		APPROVED		DATE		D		CD SWGM0027E		00	
		TL		07/09/18		SCALE		2:3		SHEET 1 OF 1	