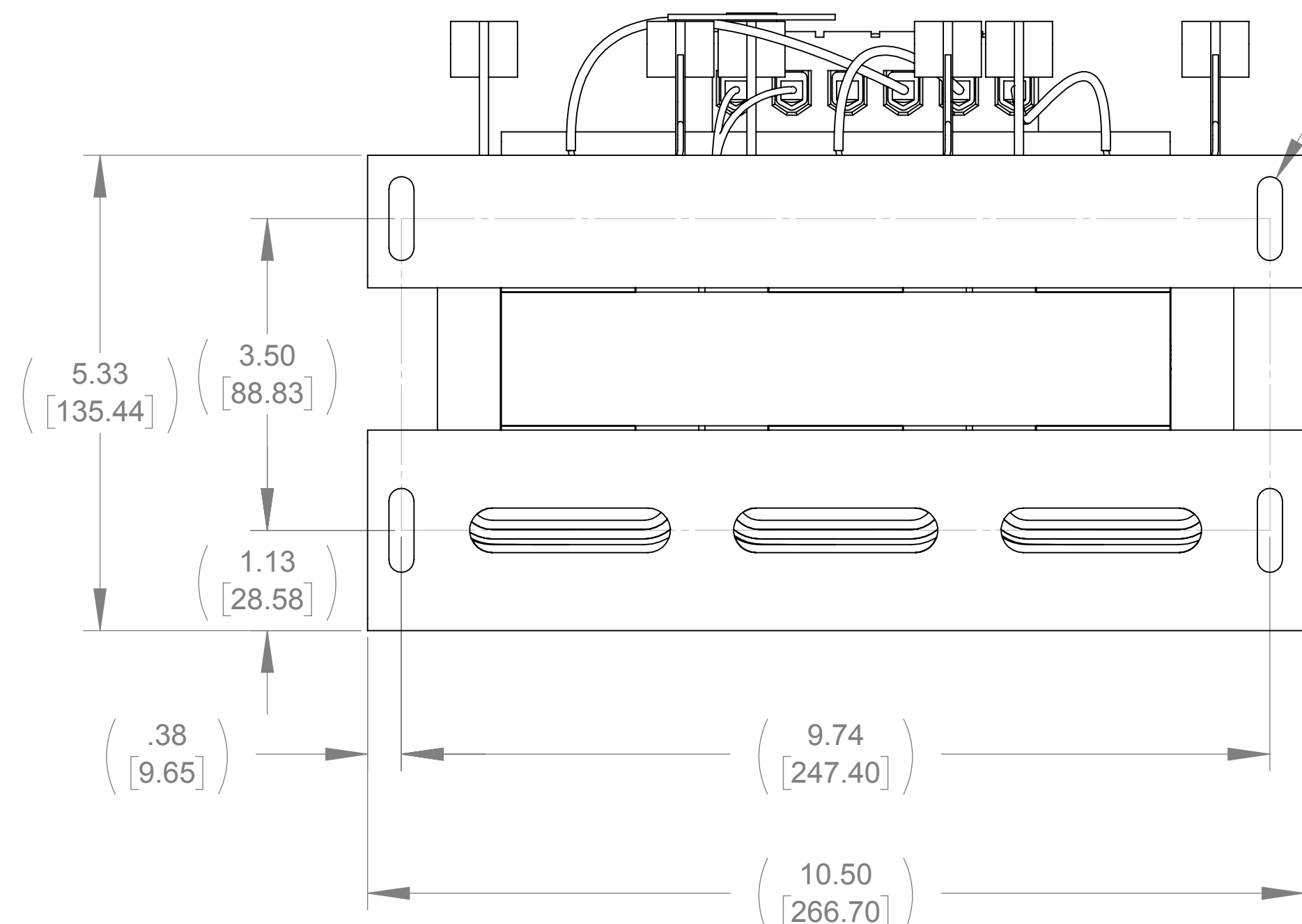
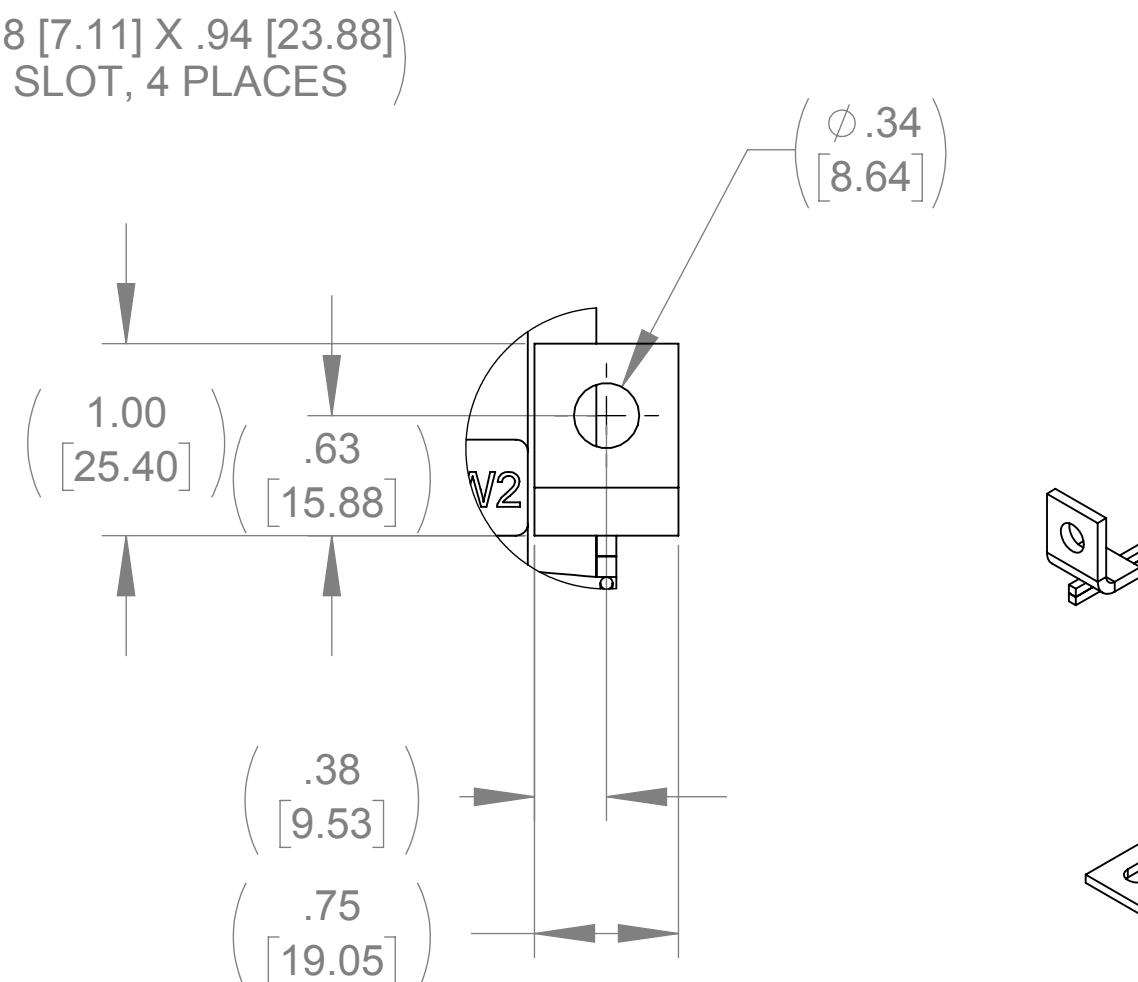


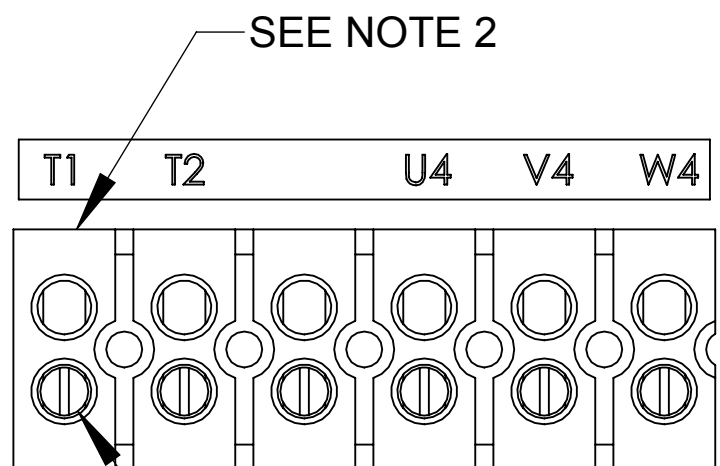
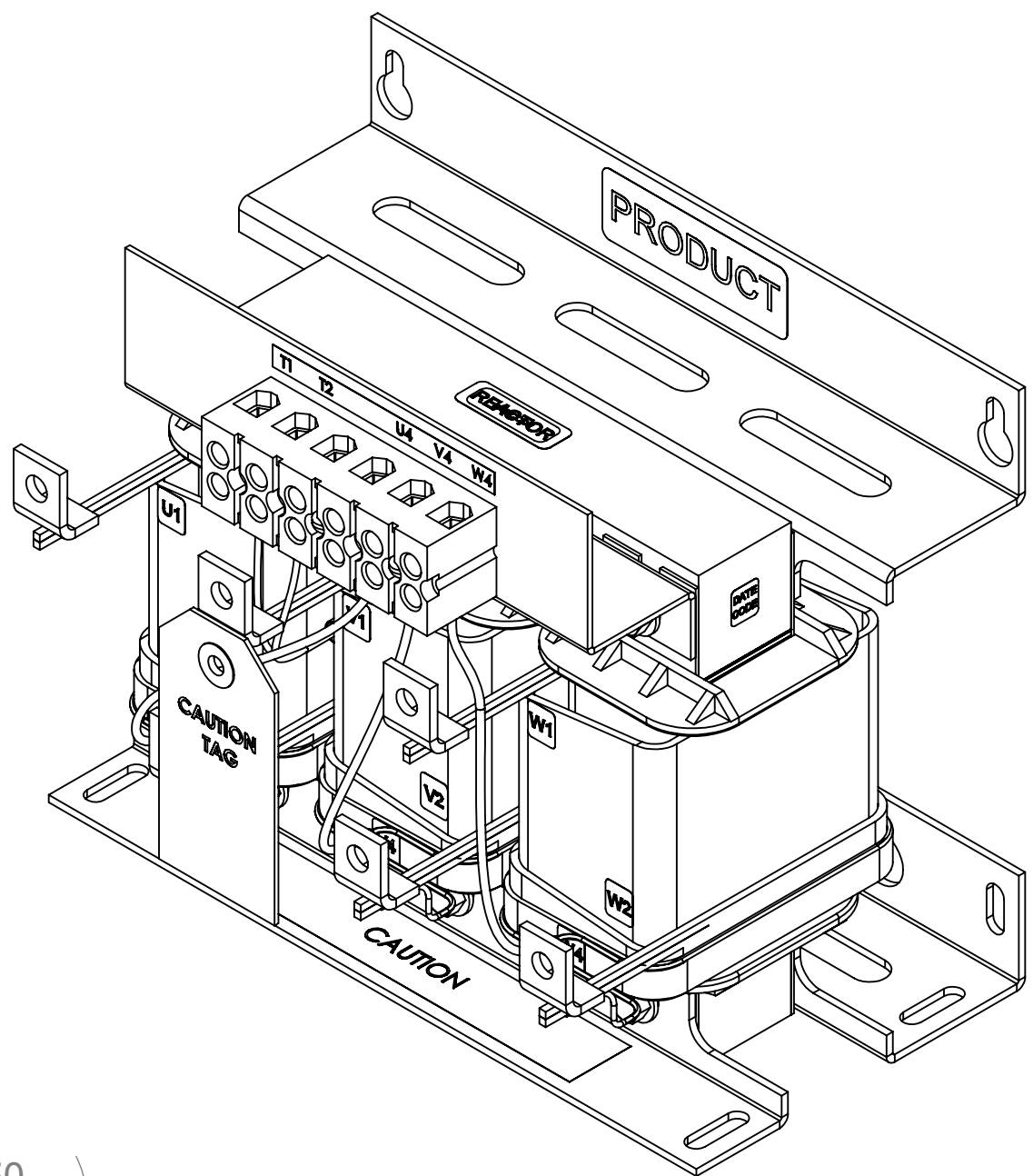
TOP VIEW



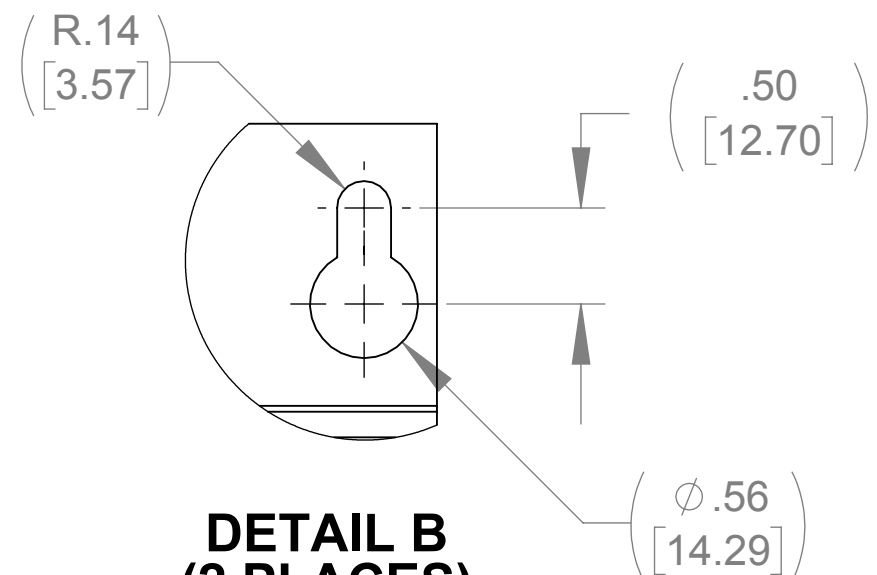
BOTTOM VIEW



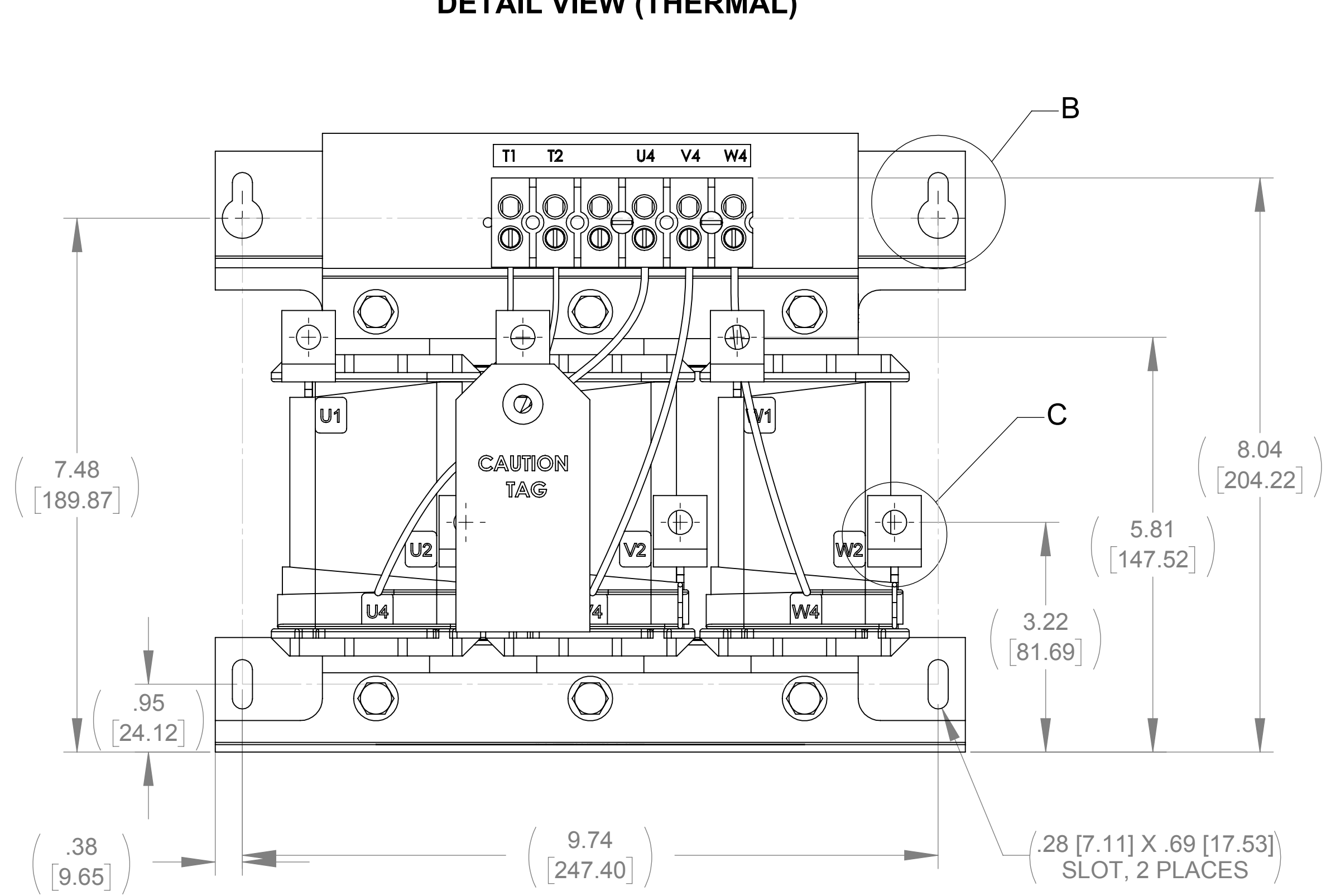
**DETAIL C
(6 PLACES)**



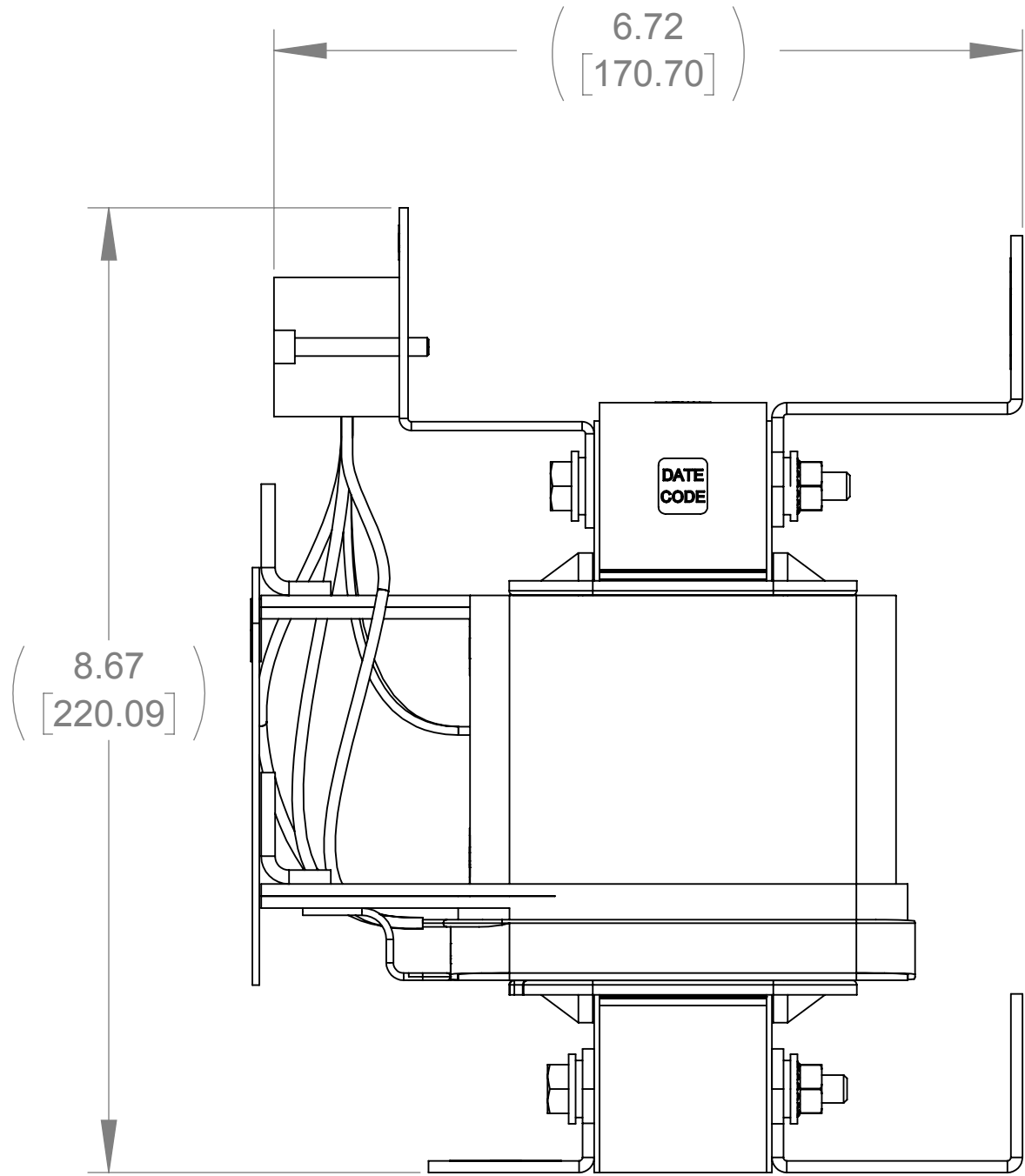
CUSTOMER CONNECTION DETAIL VIEW (THERMAL)



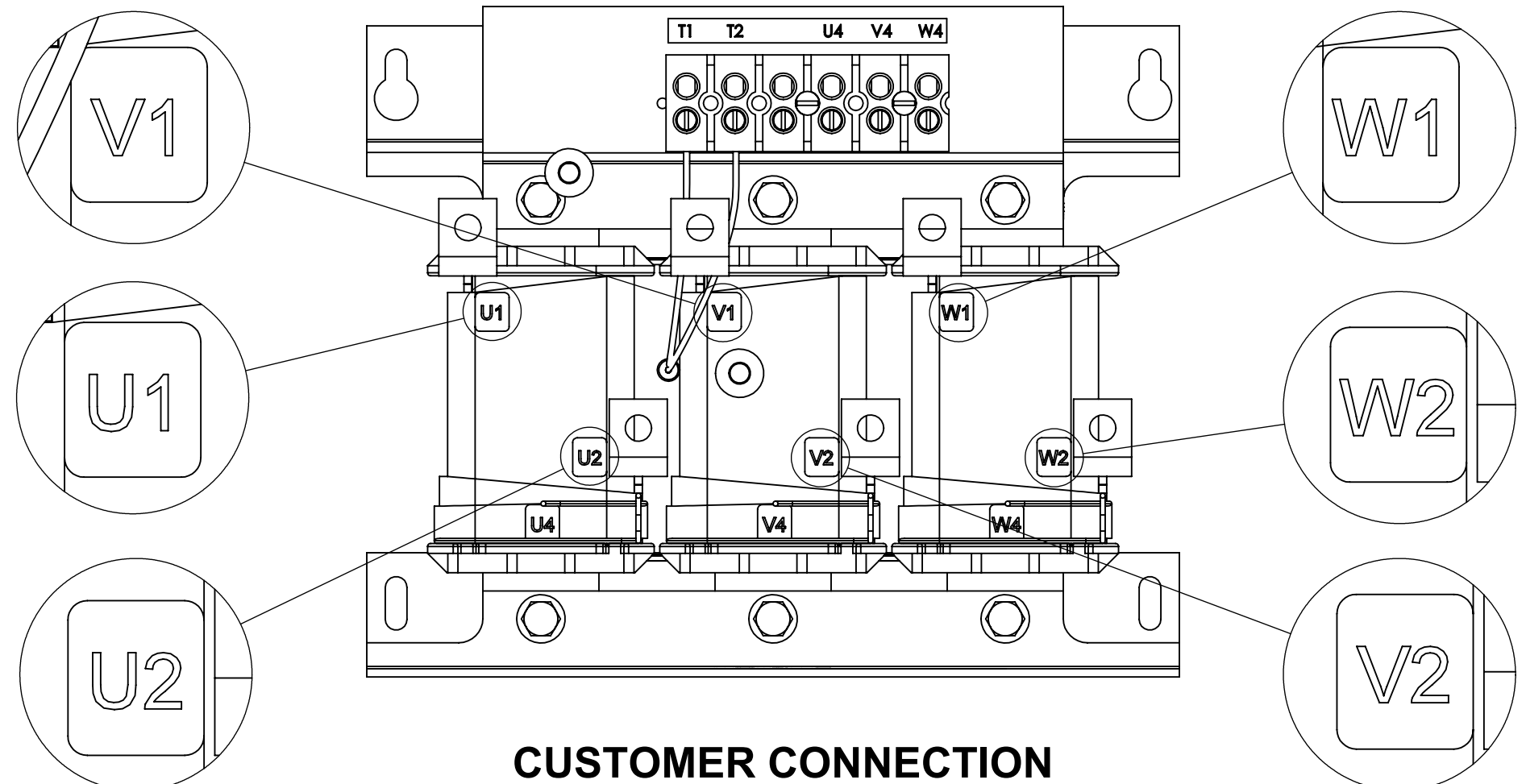
**DETAIL B
(2 PLACES)**



FRONT VIEW




RIGHT SIDE VIEW



CUSTOMER CONNECTION DETAIL VIEW

NOTES:

- 1. TIGHTEN TERMINAL BLOCK SCREWS TO 16 IN/LBS. TORQUE, MAX.**
- 2. TERMINAL WIRE SIZE: 4-14 AWG.**
- 3. FILTER REQUIRES: CAP-509SW (QTY. 1).**

THE COMPONENT, PART OR ASSEMBLY DESCRIBED IN THIS DOCUMENT MUST COMPLY WITH THE EU(EUROPEAN UNION) DIRECTIVE RoHS2		MATERIAL		CONFIDENTIAL AND PROPRIETARY INFORMATION THIS DOCUMENT CONTAINS CONFIDENTIAL AND PROPRIETARY INFORMATION OF MTE CORPORATION AND MAY NOT BE USED, COPIED OR DISCLOSED TO OTHERS EXCEPT WITH THE AUTHORIZED WRITTEN PERMISSION OF MTE CORPORATION			
CONTAINS <0.1% OF ANY SVHC BY WEIGHT PER REACH REGULATION				DESCRIPTION			
<div>UNLESS OTHERWISE SPECIFIED DIMENSIONS ARE IN INCHES [MM] TOLERANCES ARE:</div> <div>ANGLES: ± 1 °</div> <div>1 PLACE .X: ± .1 [2.5]</div> <div>2 PLACE .XX: ± .03 [0.76]</div> <div>3 PLACE .XXX: ± .010 [0.254]</div> <div><div>N83 W13330 Leon Road Menomonee Falls, WI 53051 USA 800.455-4683 262.253.8200</div></div>		DRAWN		DATE		SIZE D DWG No. CD SWGM0027D REV 02	
		MN		09/11/13			
		CHECKED		DATE			
		JM		11/04/14			
		APPROVED		DATE		SCALE 2:3	
		JM		11/04/14		SHEET 1 OF 1	