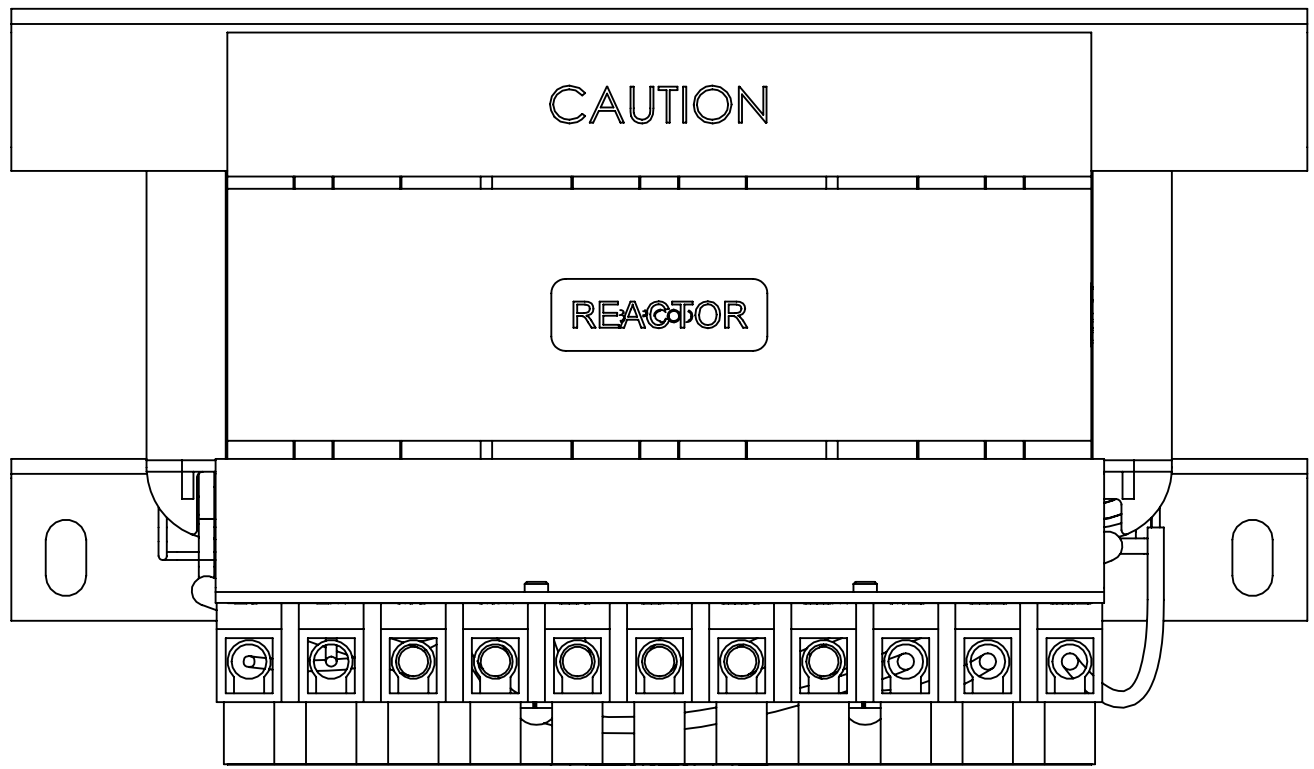
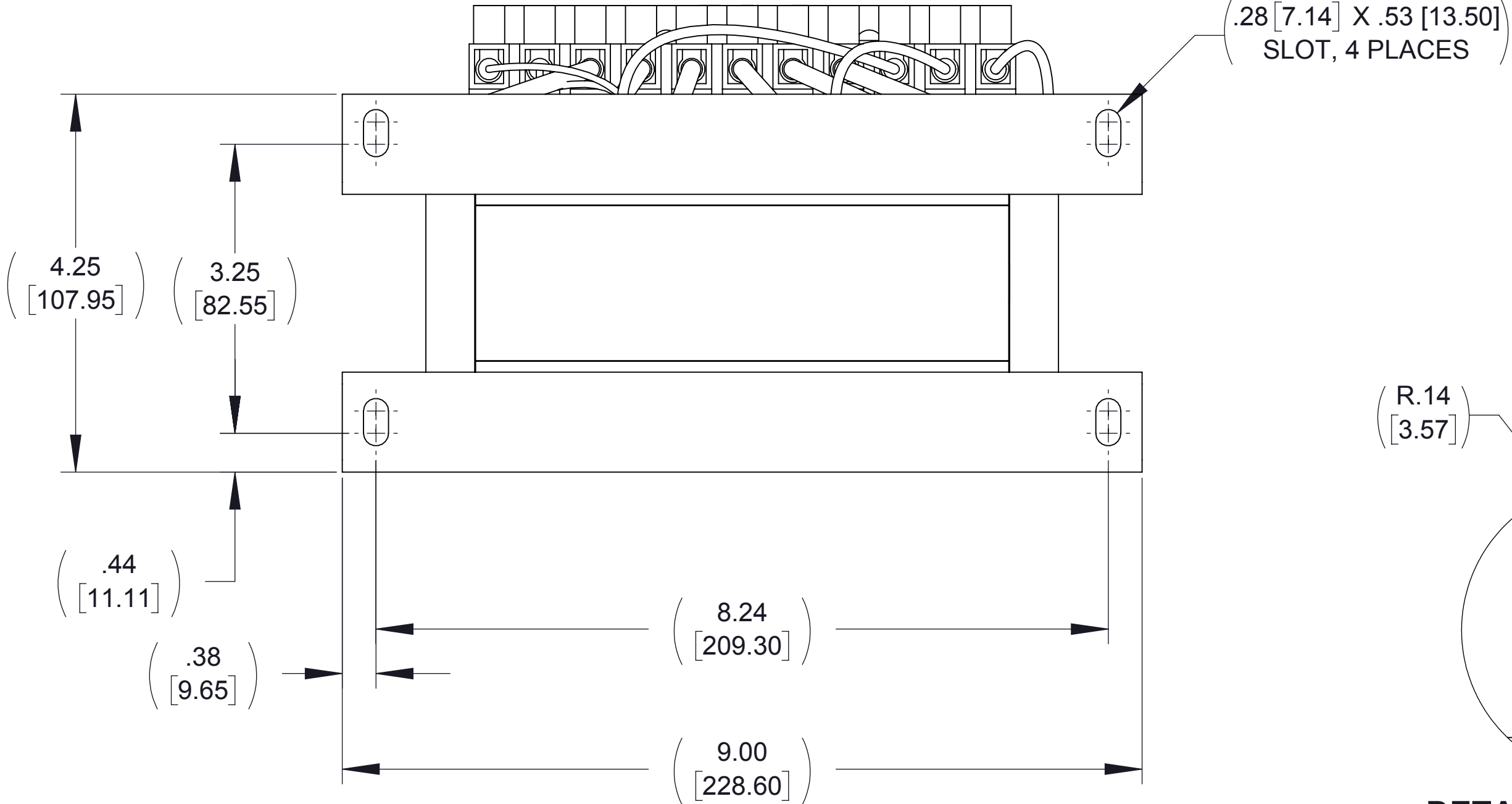


APPROX. WEIGHT (LBS)
26

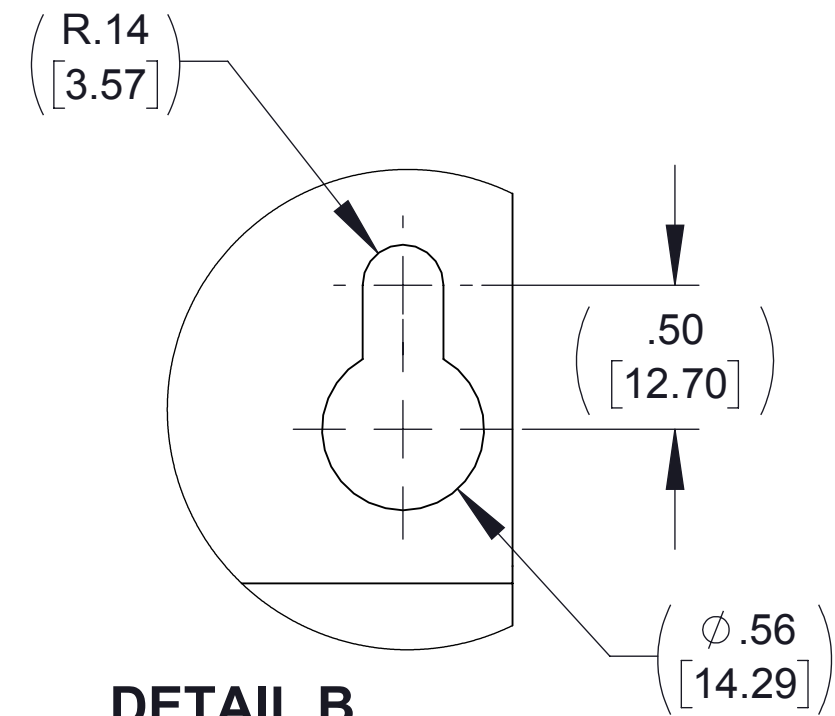
F	DESCRIPTION	REV BY	DATE



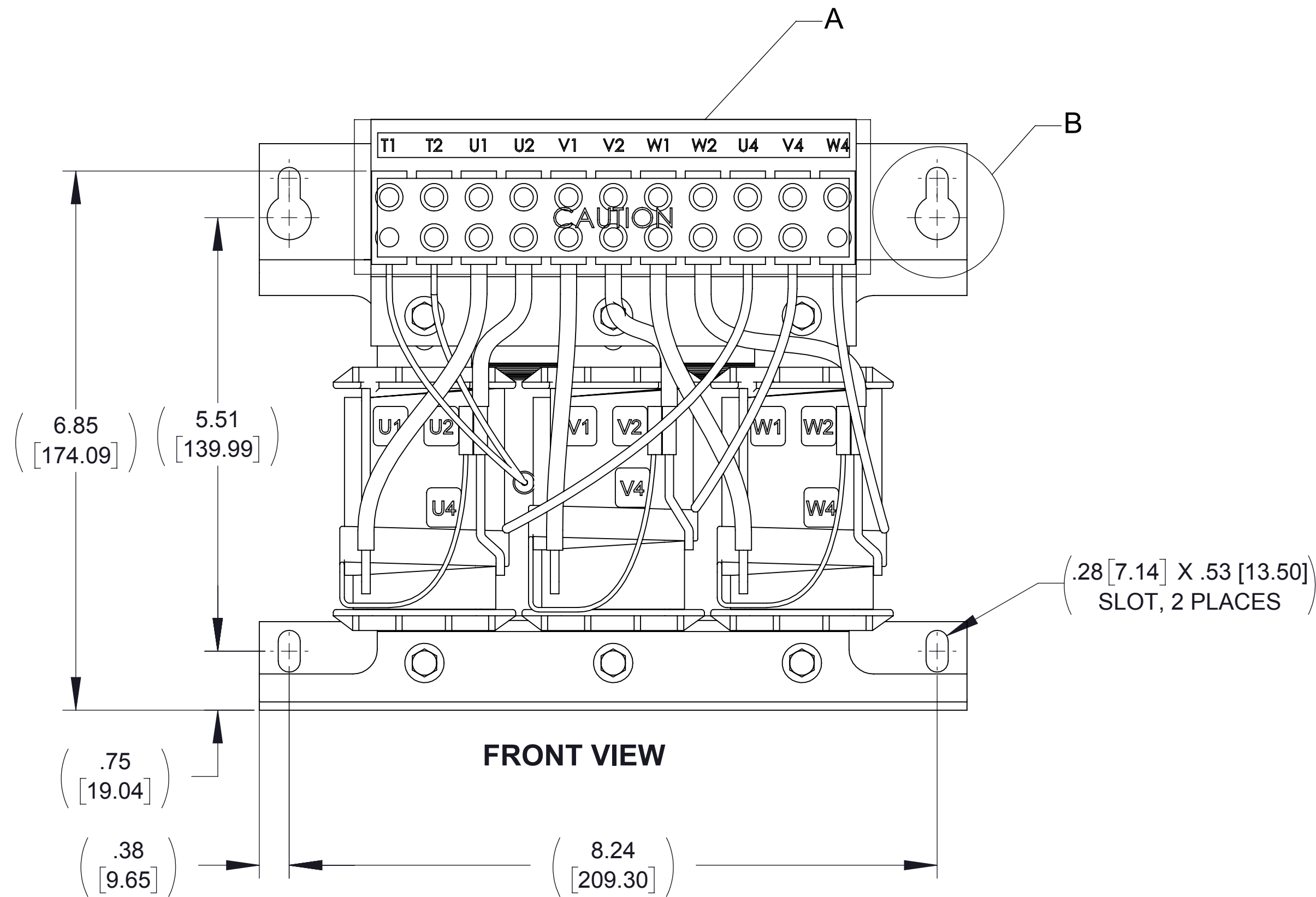
TOP VIEW



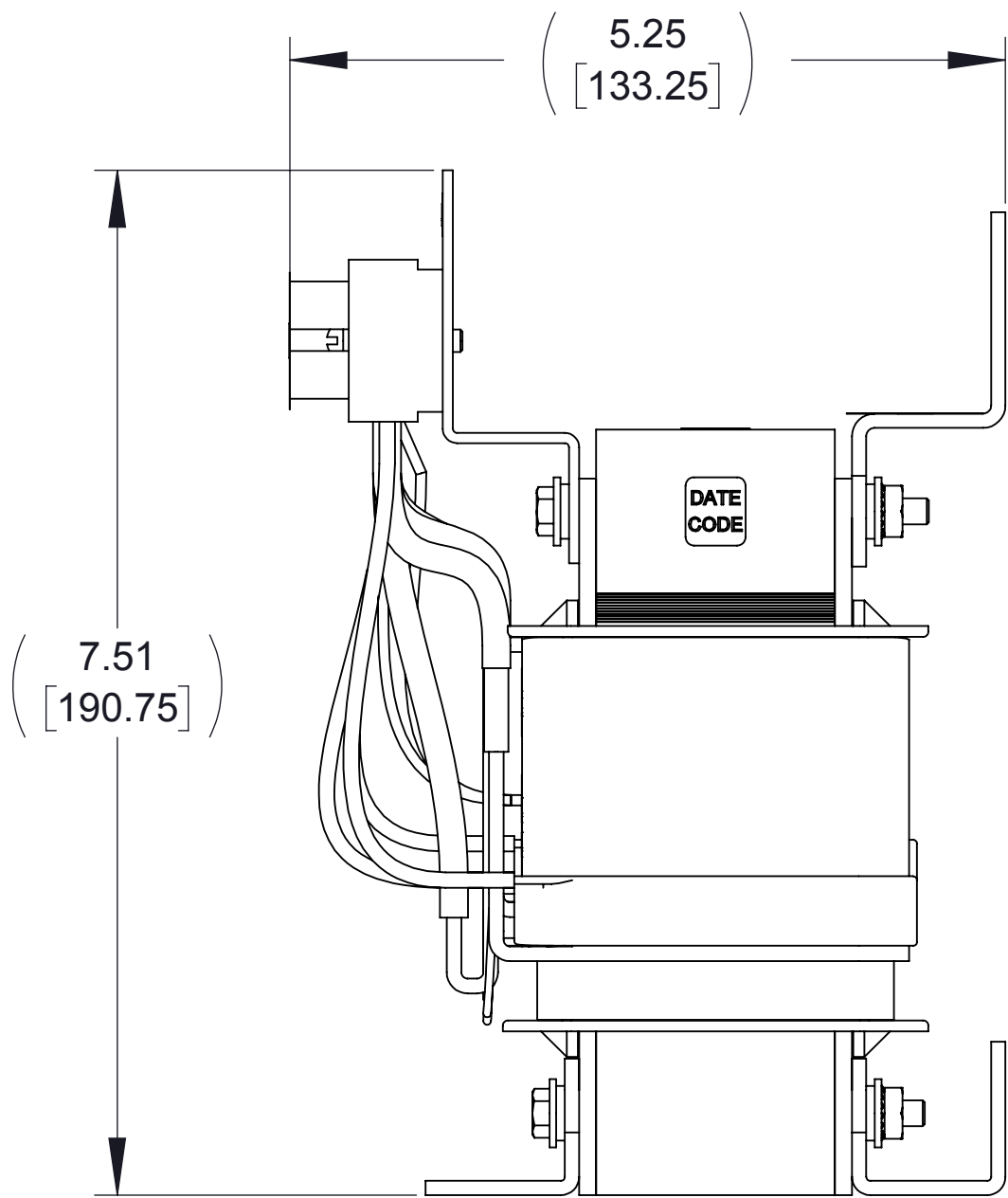
BOTTOM VIEW



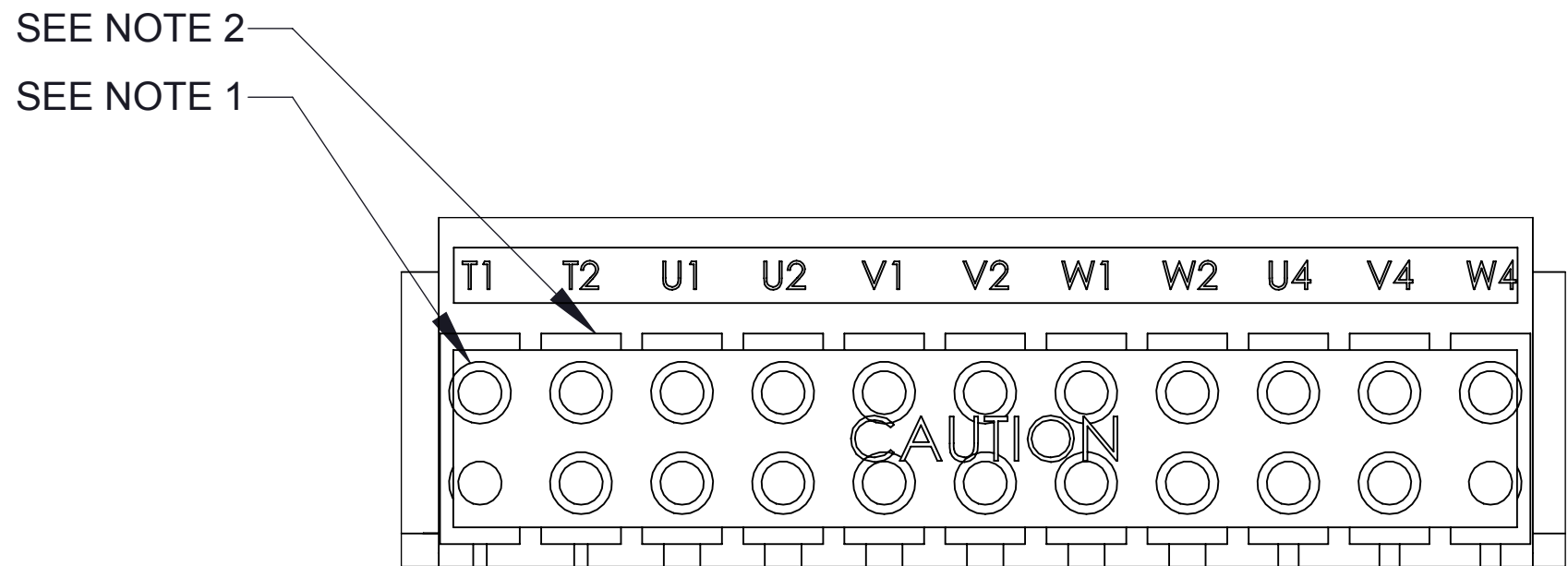
**DETAIL B
(2 PLACES)**



FRONT VIEW




RIGHT SIDE VIEW



DETAIL A CUSTOMER CONNECTION DETAIL VIEW

- NOTES:**
- 1. TIGHTEN TERMINAL BLOCK SCREWS TO 16IN/LBS. TORQUE**
 - 2. TERMINAL WIRE SIZE: 2-14 AWG.**
 - 3. FILTER INCLUDES: CAP-523SW (QTY. 1).**

THE COMPONENT, PART OR ASSEMBLY DESCRIBED IN THIS DOCUMENT MUST COMPLY WITH THE EU(EUROPEAN UNION) DIRECTIVE RoHS2		MATERIAL		CONFIDENTIAL AND PROPRIETARY INFORMATION THIS DOCUMENT CONTAINS CONFIDENTIAL AND PROPRIETARY INFORMATION OF MTE CORPORATION AND MAY NOT BE USED, COPIED OR DISCLOSED TO OTHERS EXCEPT WITH THE AUTHORIZED WRITTEN PERMISSION OF MTE CORPORATION			
CONTAINS <0.1% OF ANY SVHC BY WEIGHT PER REACH REGULATION				DESCRIPTION			
UNLESS OTHERWISE SPECIFIED DIMENSIONS ARE IN INCHES [MM] TOLERANCES ARE: ANGLES: $\pm 1^\circ$ 1 PLACE .X: $\pm .1$ [2.5] 2 PLACE .XX: $\pm .03$ [0.76] 3 PLACE .XXX: $\pm .010$ [0.254]				SWG 17A 600V 2-8kHz OPEN PANEL			
N83 W13330 Leon Road Menomonee Falls, WI 53051 USA 800.455-4683 262.253.8200		DRAWN WF	DATE 07/27/18				
		CHECKED WF	DATE 08/21/18				
		APPROVED TL	DATE 10/09/18	SIZE D	DWG No. CD SWGM0017E	REV 00	
				SCALE 3:4			SHEET 1 OF 1