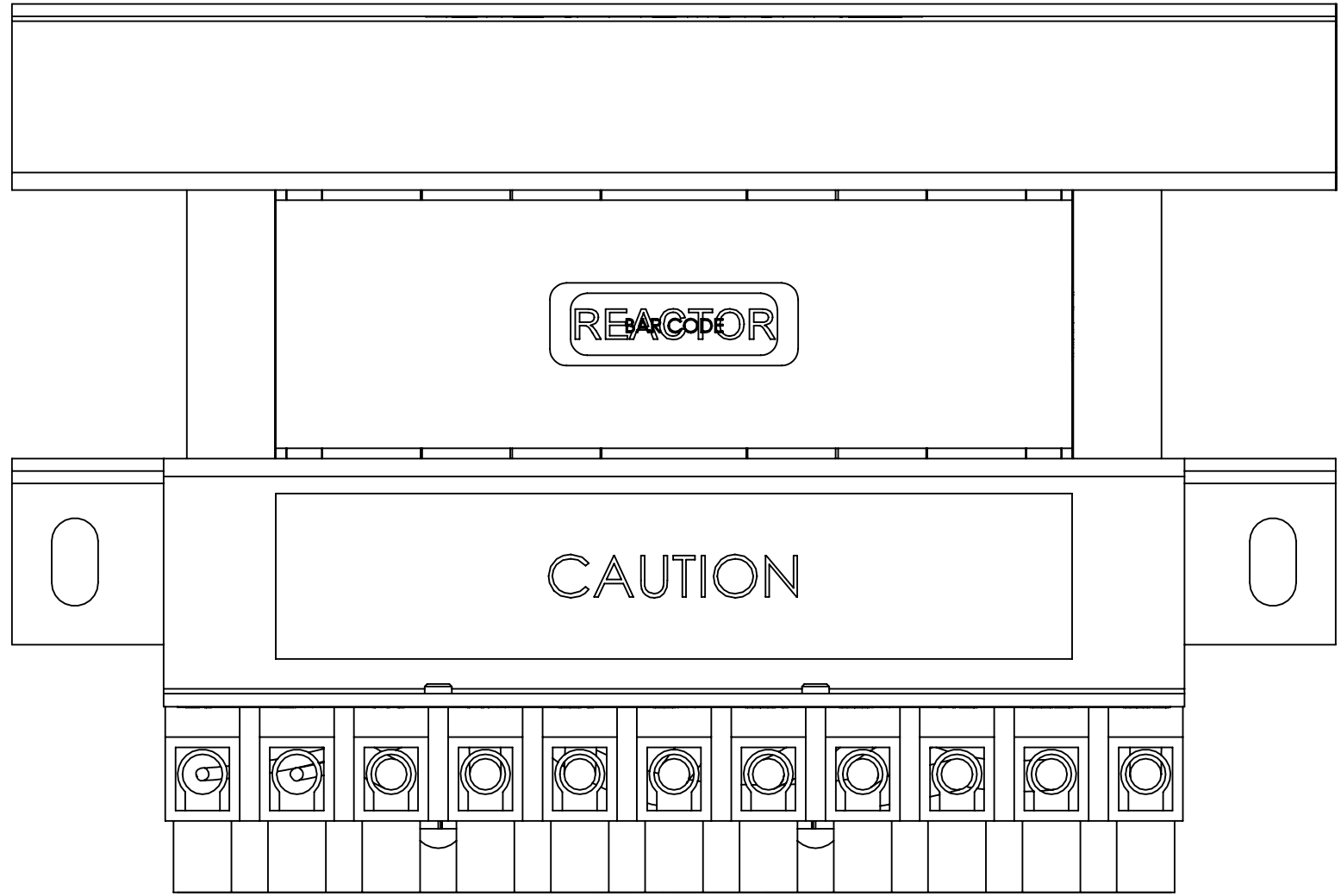
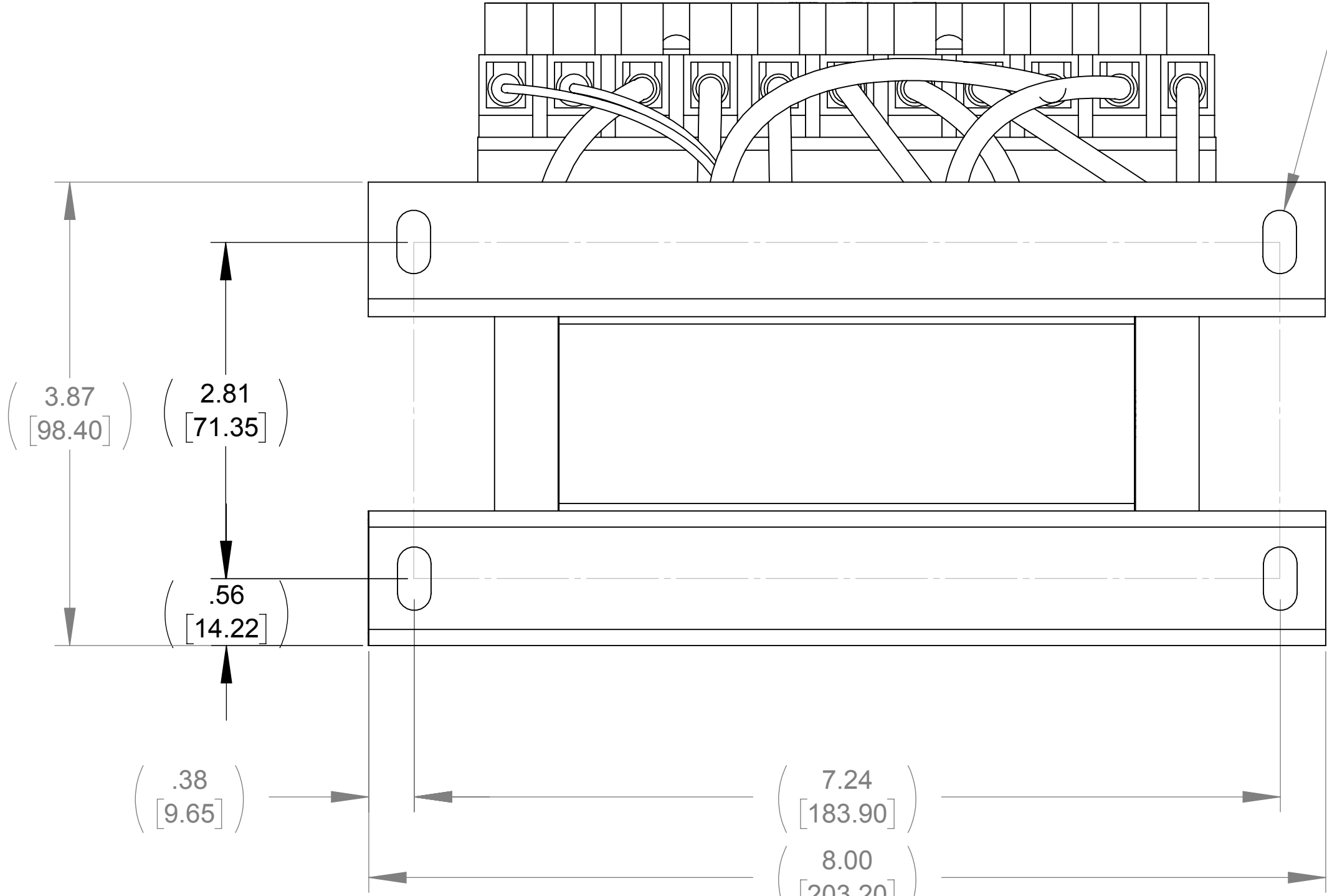


WEIGHT (LBS)  
17

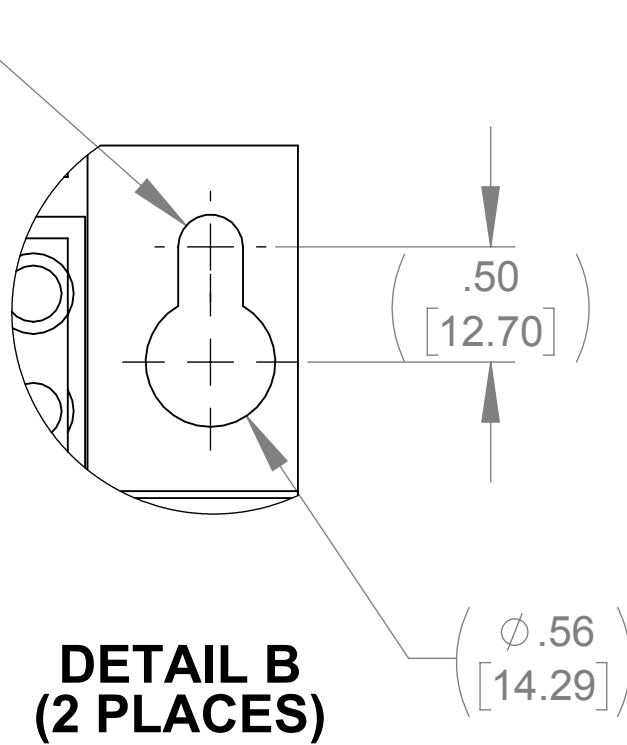
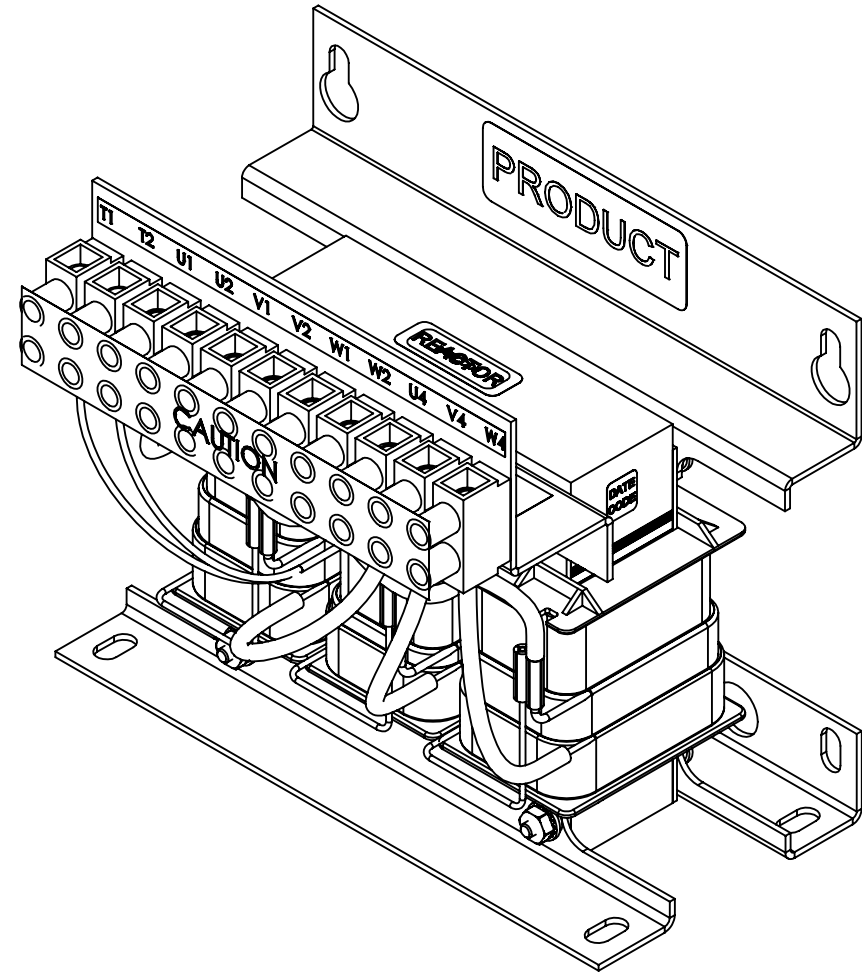
ECO No	DESCRIPTION	REV BY	DATE
M9353	UPDATED LABEL GRAPHICS	JT	11/03/14



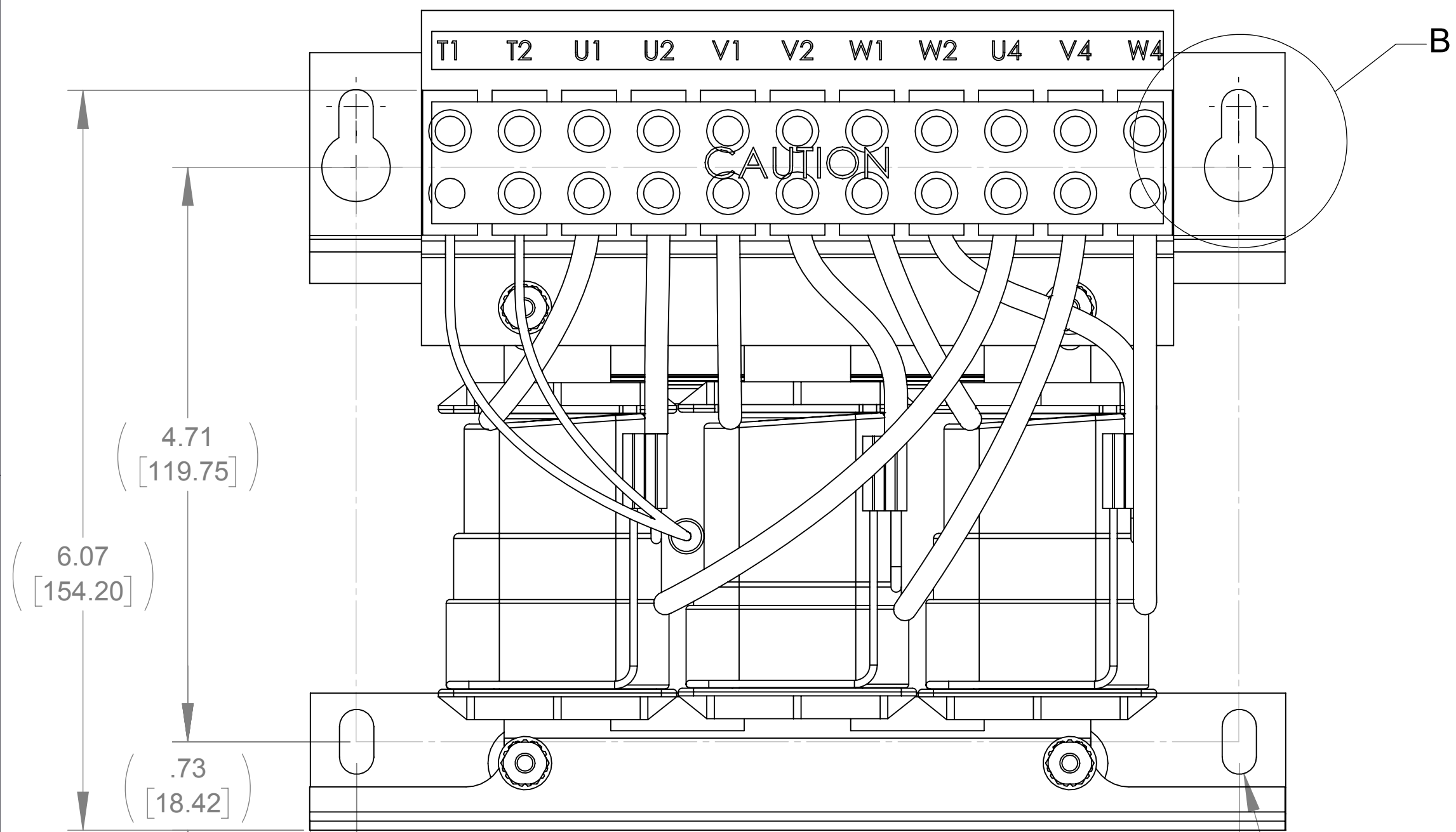
TOP VIEW



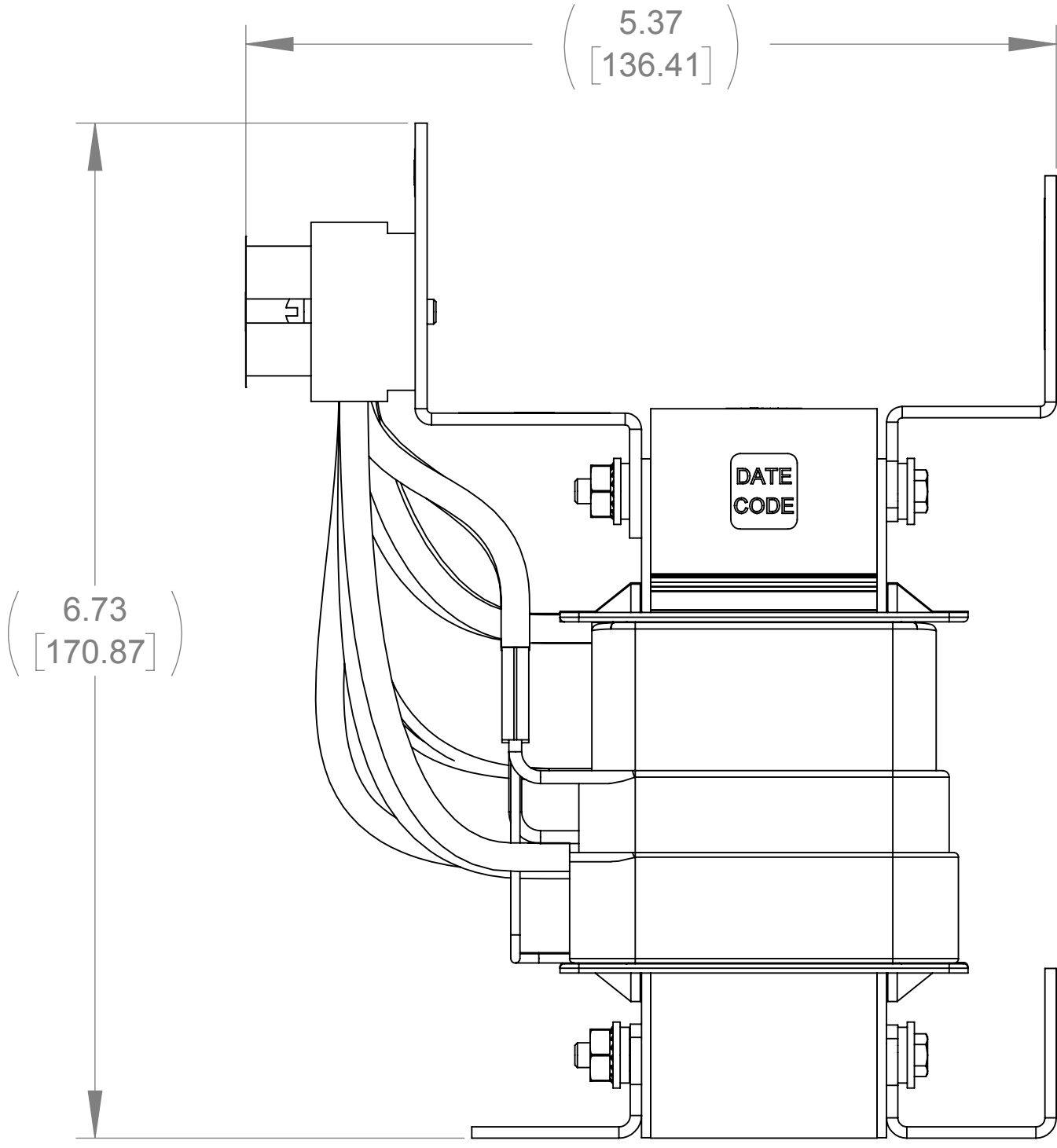
BOTTOM VIEW



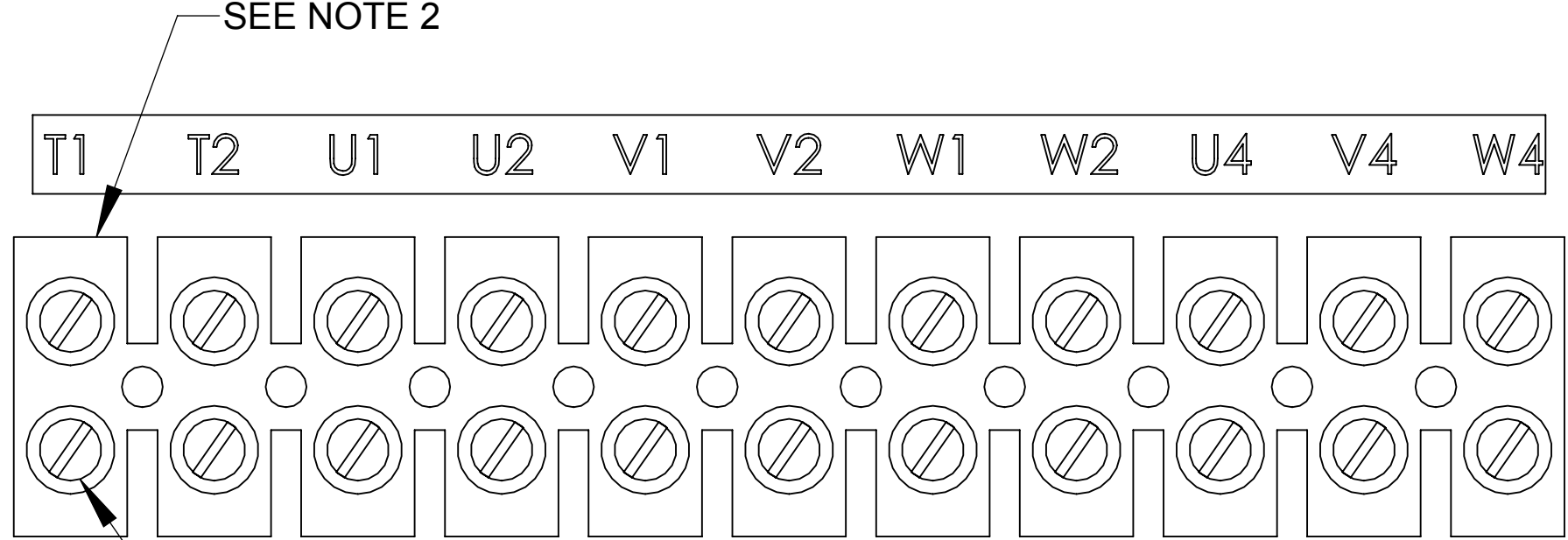
DETAIL B  
(2 PLACES)



FRONT VIEW



RIGHT SIDE VIEW



CUSTOMER CONNECTION  
DETAIL VIEW

- NOTES:
- TIGHTEN TERMINAL BLOCK SCREWS TO 16 IN/LBS. TORQUE, MAX.
  - TERMINAL WIRE SIZE: 4-14 AWG.
  - FILTER REQUIRES: CAP-506SW (QTY. 1).

THE COMPONENT, PART OR ASSEMBLY DESCRIBED IN THIS DOCUMENT MUST COMPLY WITH THE EU(EUROPEAN UNION) DIRECTIVE RoHS2		MATERIAL		CONFIDENTIAL AND PROPRIETARY INFORMATION THIS DOCUMENT CONTAINS CONFIDENTIAL AND PROPRIETARY INFORMATION OF MTE CORPORATION AND MAY NOT BE USED, COPIED OR DISCLOSED TO OTHERS EXCEPT WITH THE AUTHORIZED WRITTEN PERMISSION OF MTE CORPORATION					
CONTAINS <0.1% OF ANY SVHC BY WEIGHT PER REACH REGULATION				DESCRIPTION					
UNLESS OTHERWISE SPECIFIED DIMENSIONS ARE IN INCHES [MM] TOLERANCES ARE:  ANGLES: ± 1 °  1 PLACE .X: ± .1 [2.5]  2 PLACE .XX: ± .03 [0.76]  3 PLACE .XXX: ± .010 [0.254]		<div>MTE</div> <div>AN BL POWER ELECTRONICS COMPANY</div> <div>N83 W13330 Leon Road Menomonee Falls, WI 53051 USA 800.455-4683 262.253.8200</div>		SWG 12A 380-480V 2-8kHz					
		DRAWN MN	DATE 09/18/13	SIZE D		DWG No. CD SWGM0012D		REV 02	
		CHECKED JM	DATE 11/04/14						
		APPROVED JM	DATE 11/04/14	SCALE 1:1		SHEET 1 OF 1			