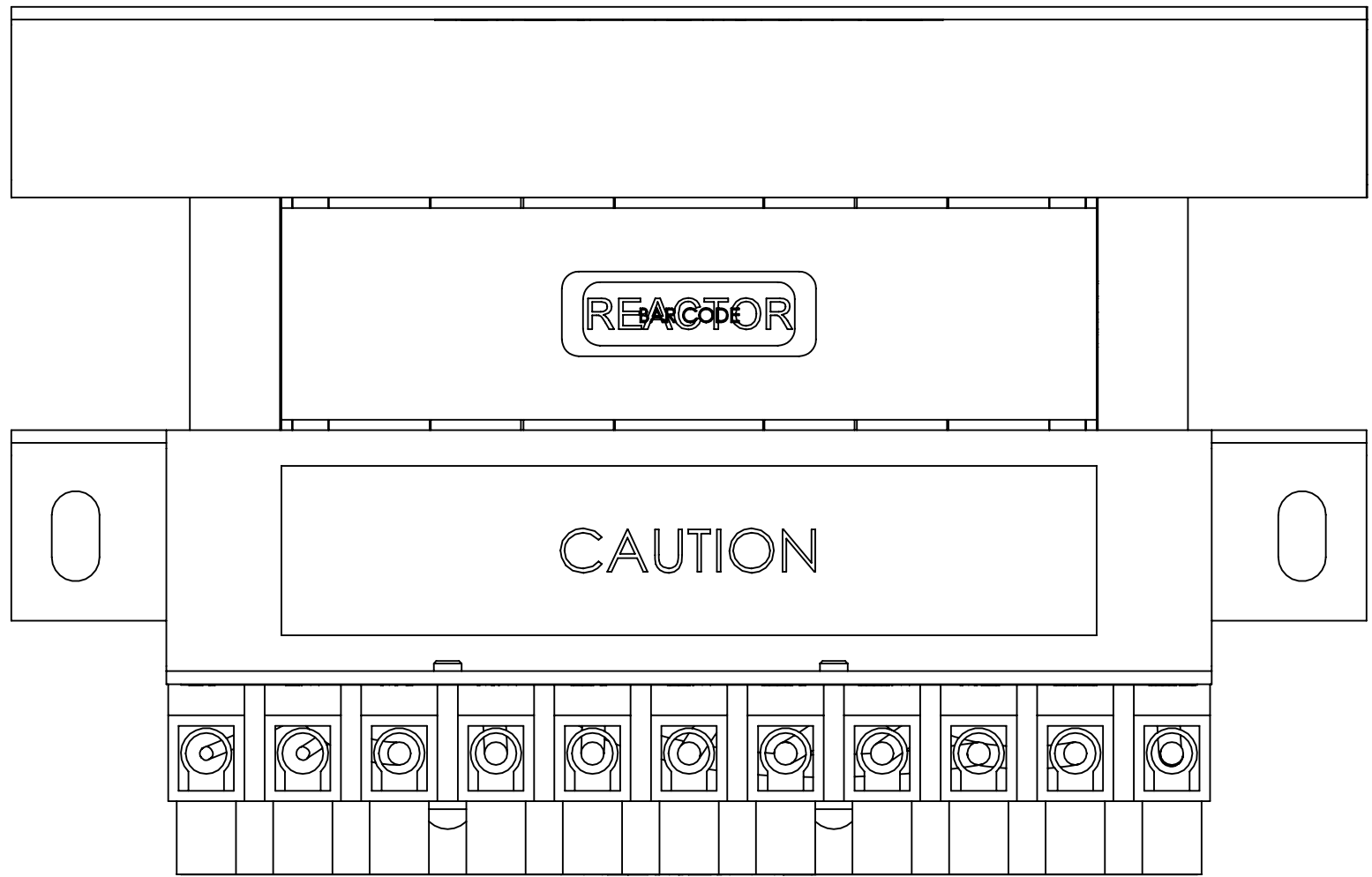
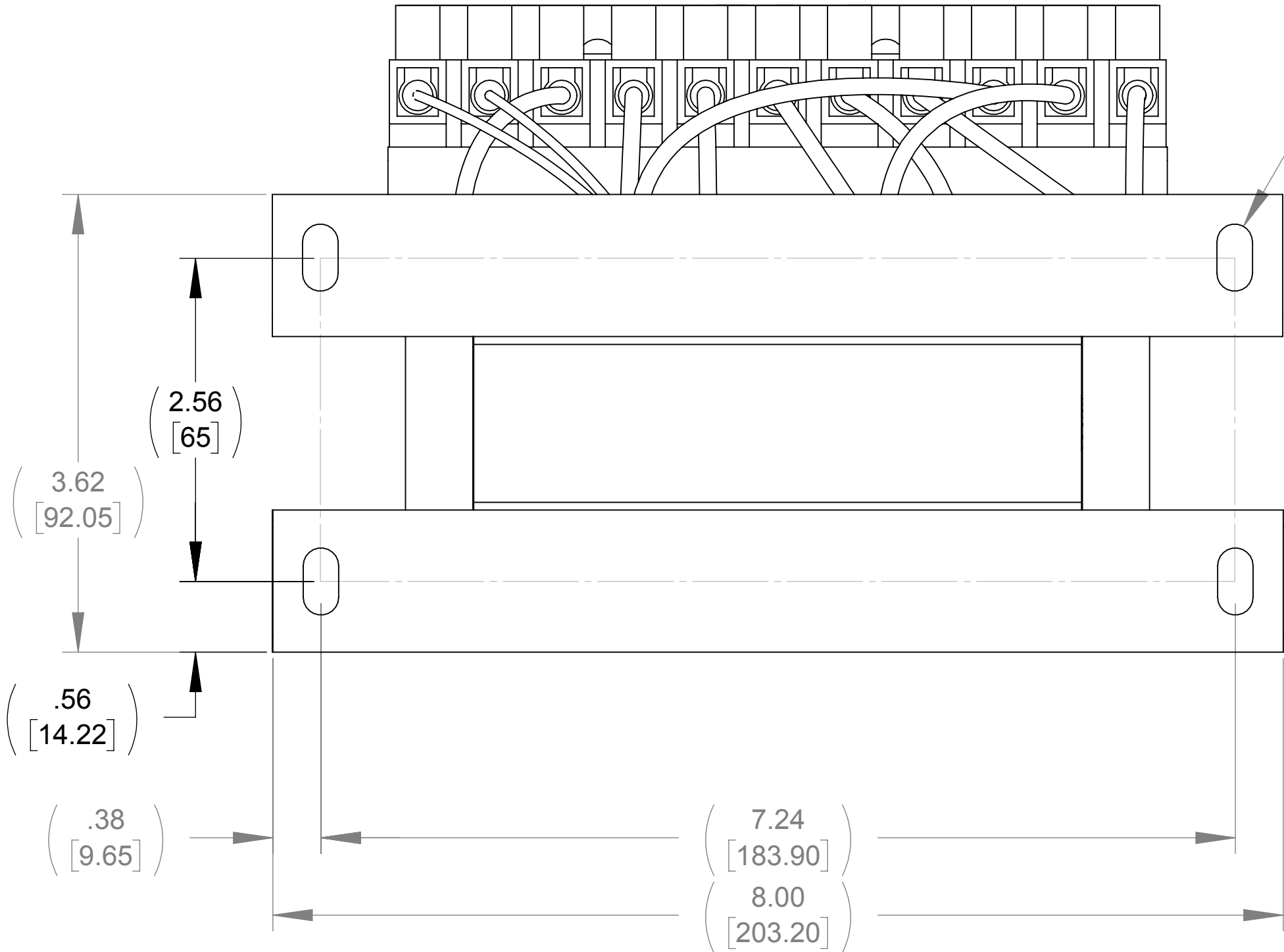


WEIGHT (LBS)
15

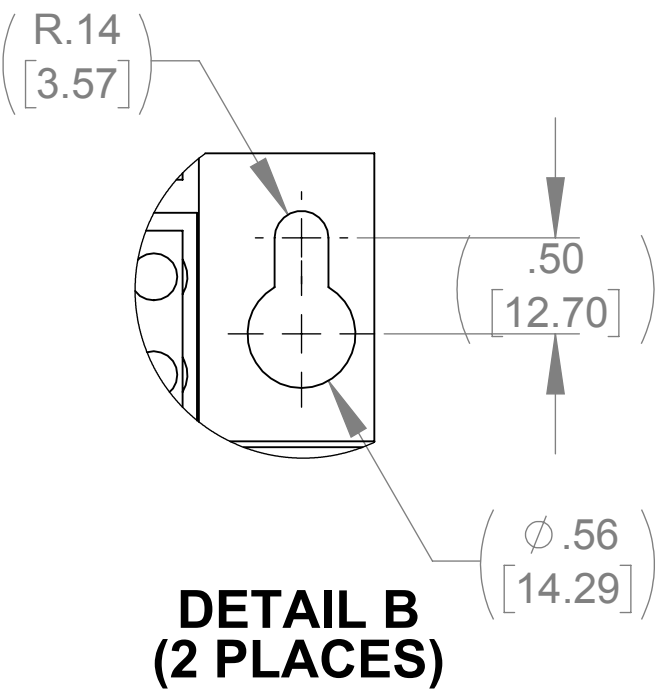
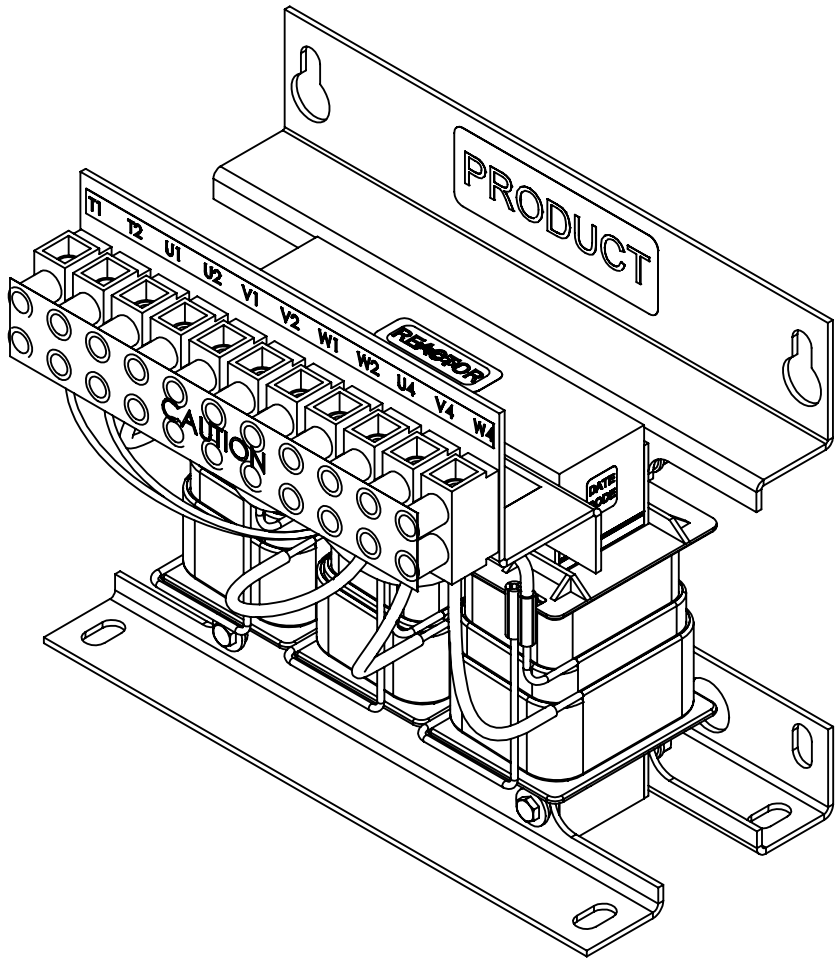
ECO No	DESCRIPTION	REV BY	DATE
M9353	UPDATED LABEL GRAPHICS	JT	11/03/14



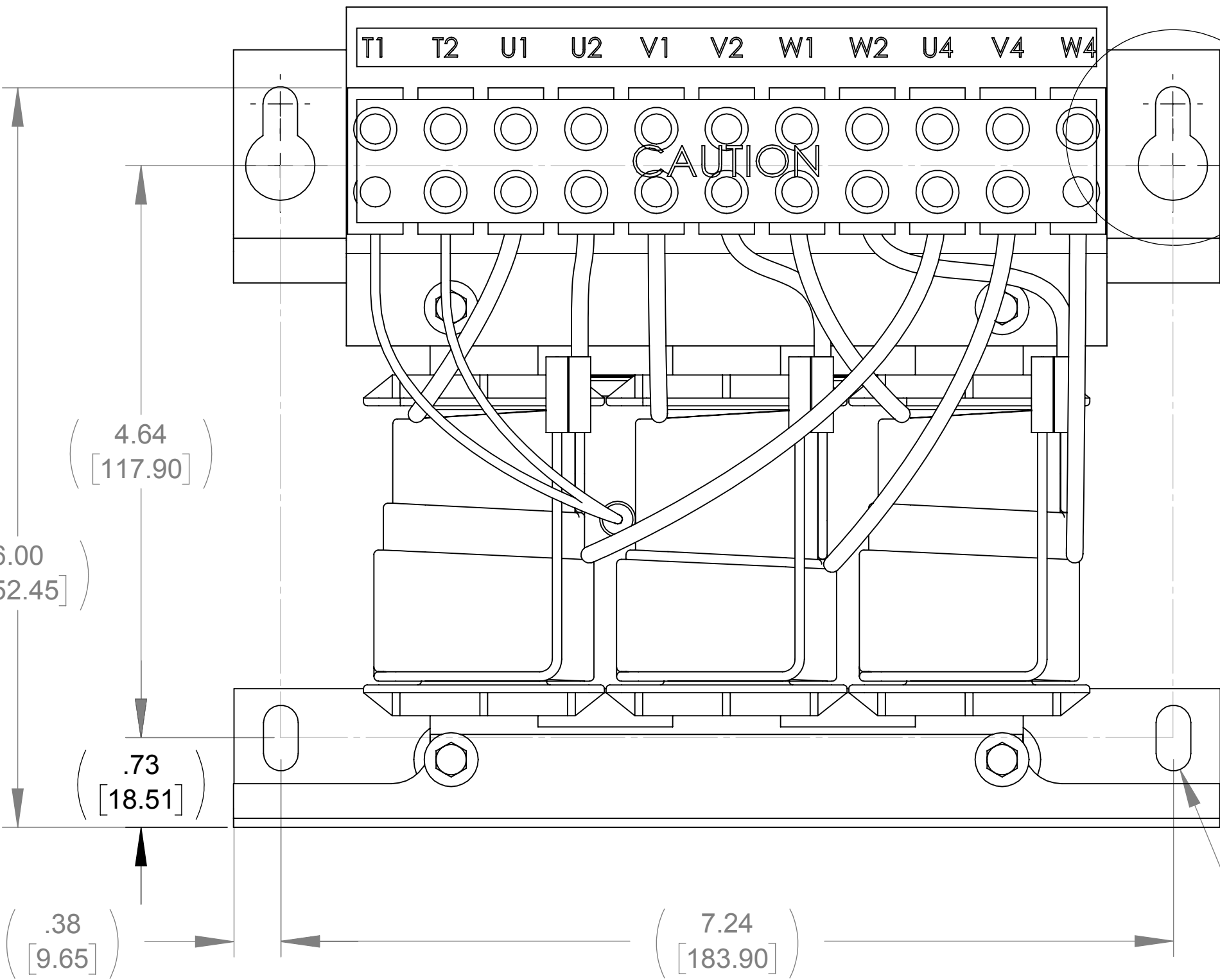
TOP VIEW



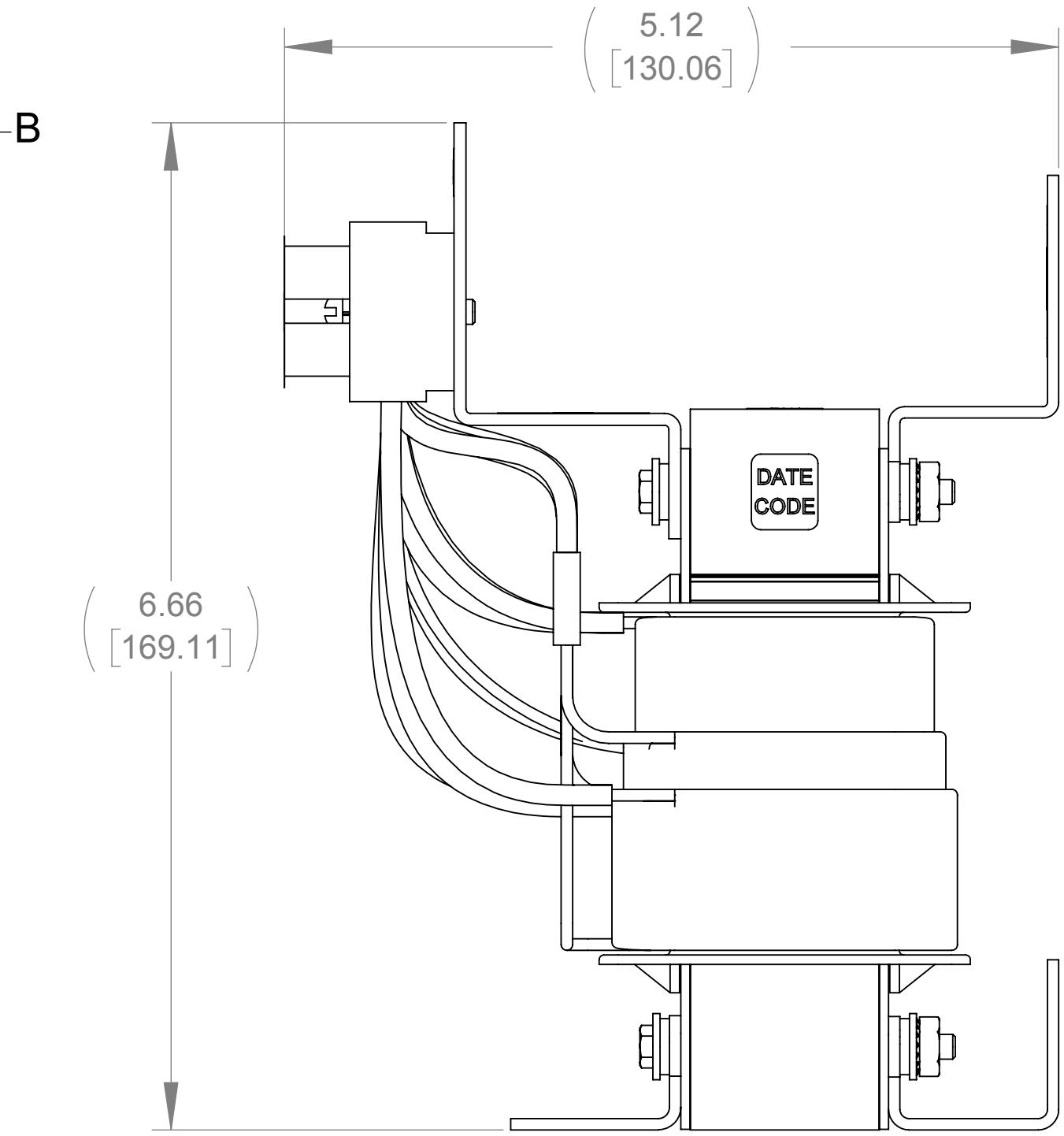
BOTTOM VIEW



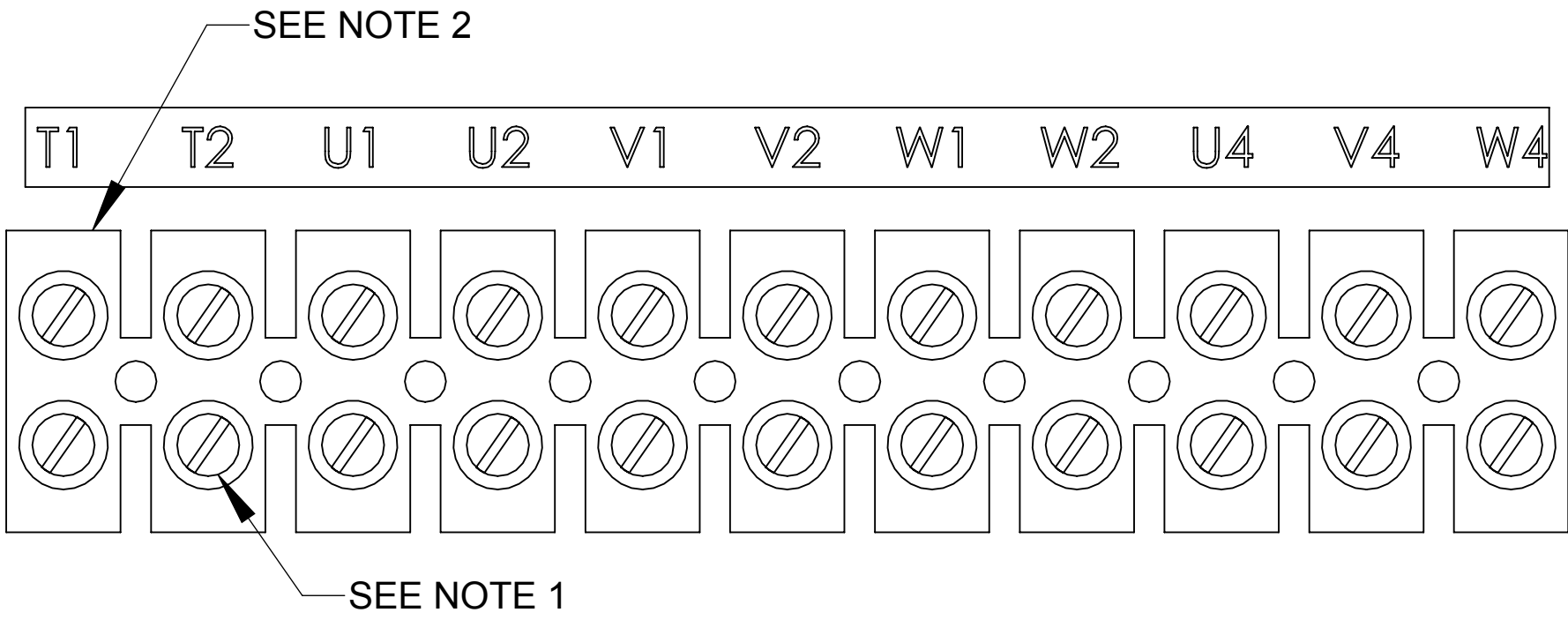
DETAIL B
(2 PLACES)



FRONT VIEW



RIGHT SIDE VIEW



CUSTOMER CONNECTION
DETAIL VIEW

- NOTES:
1. TERMINAL SCREW TIGHTENING TORQUE: 16 IN/LBS. MAXIMUM.
2. TERMINAL WIRE SIZE: 4-14 AWG.
3. FILTER REQUIRES: CAP-505SW (QTY. 1).

THE COMPONENT, PART OR ASSEMBLY DESCRIBED IN THIS DOCUMENT MUST COMPLY WITH THE EU(EUROPEAN UNION) DIRECTIVE RoHS2		MATERIAL		CONFIDENTIAL AND PROPRIETARY INFORMATION THIS DOCUMENT CONTAINS CONFIDENTIAL AND PROPRIETARY INFORMATION OF MTE CORPORATION AND MAY NOT BE USED, COPIED OR DISCLOSED TO OTHERS EXCEPT WITH THE AUTHORIZED WRITTEN PERMISSION OF MTE CORPORATION	
CONTAINS <0.1% OF ANY SVHC BY WEIGHT PER REACH REGULATION				DESCRIPTION	
UNLESS OTHERWISE SPECIFIED DIMENSIONS ARE IN INCHES [MM] TOLERANCES ARE: ANGLES: ± 1 ° 1 PLACE .X: ± .1 [2.5] 2 PLACE .XX: ± .03 [0.76] 3 PLACE .XXX: ± .010 [0.254]		MTE AN BL POWER ELECTRONICS COMPANY N83 W13330 Leon Road Menomonee Falls, WI 53051 USA 800.455.4683 262.253.8200		SWG 9A 380-480V 2-8kHz	
		DRAWN MN	DATE 09/18/13	SIZE D	DWG No. CD SWGM0009D
		CHECKED JM	DATE 11/04/14	REV 02	
		APPROVED JM	DATE 11/04/14	SCALE 1:1	SHEET 1 OF 1