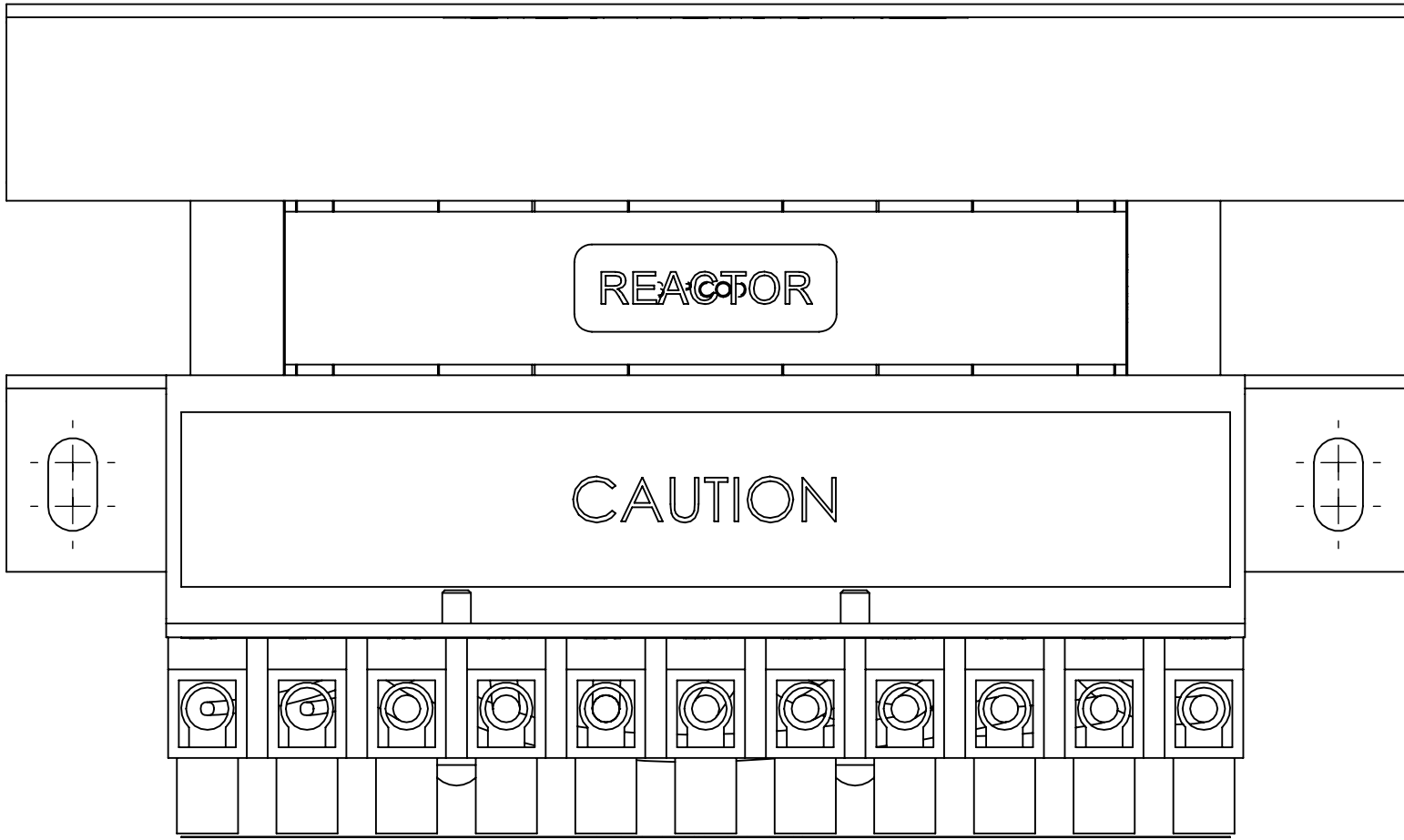
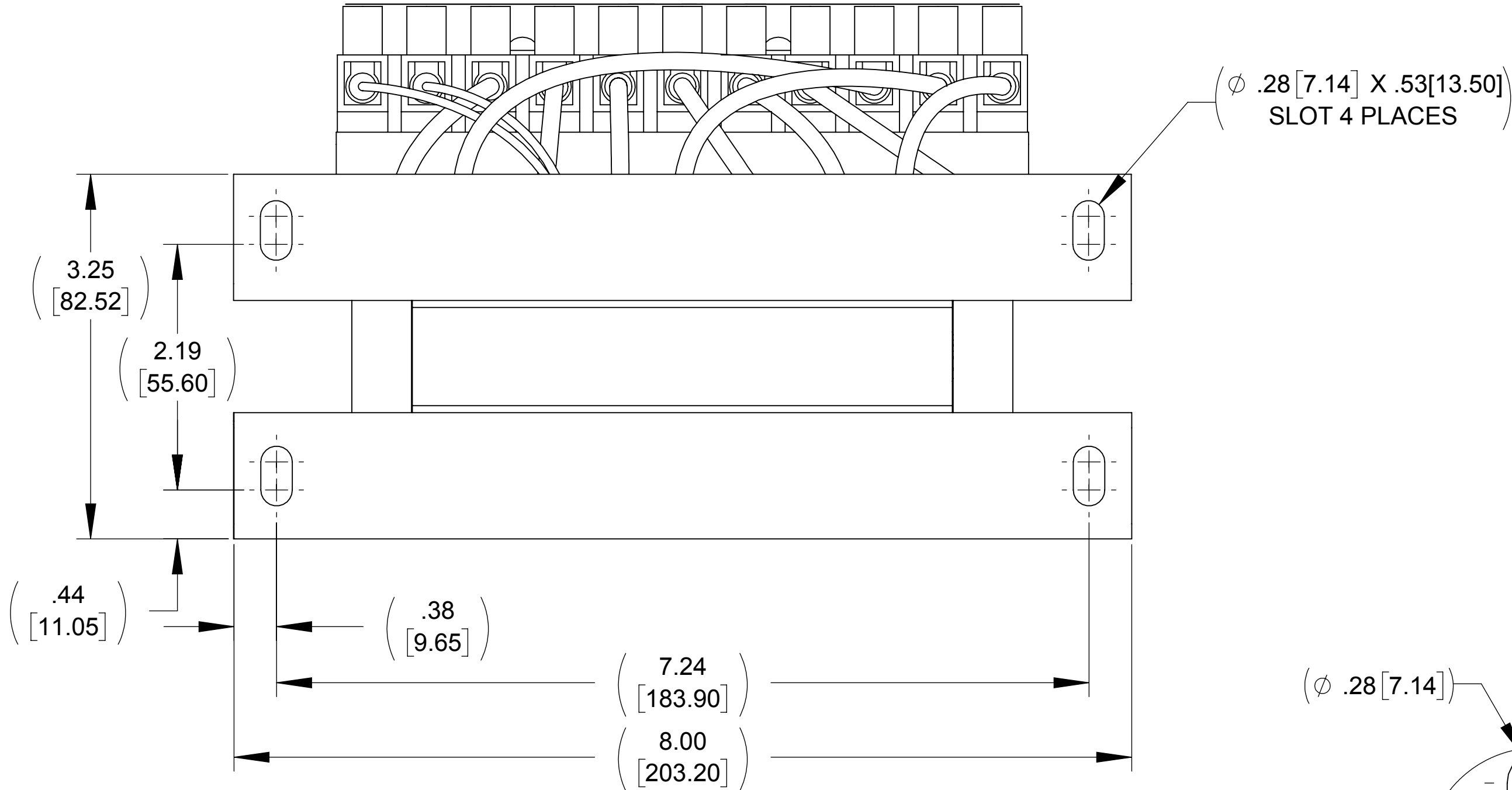


APPROX. WEIGHT  
(LBS)  
11

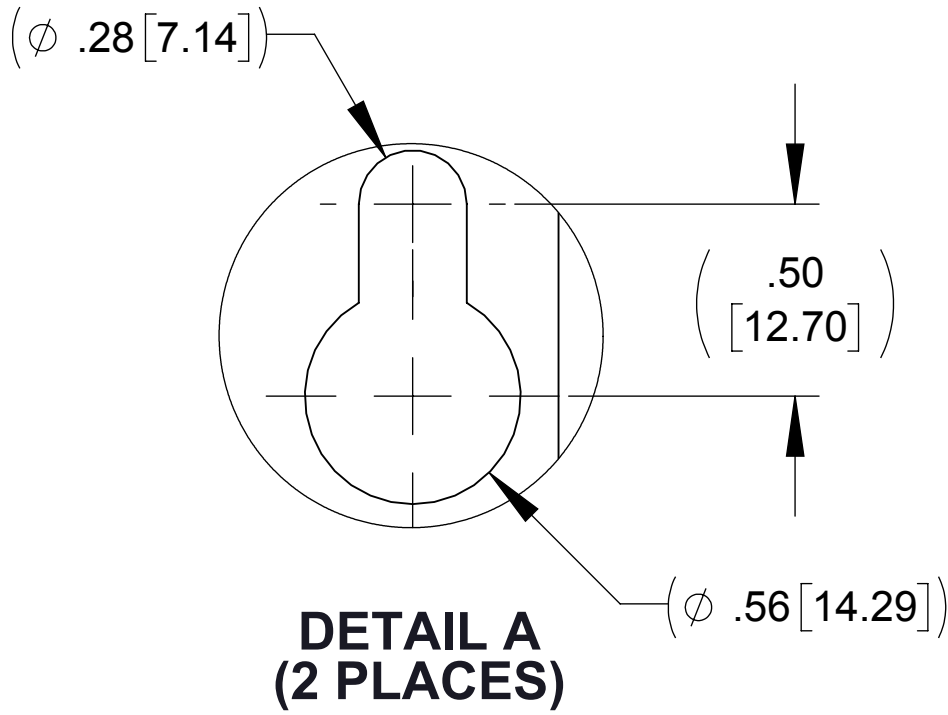
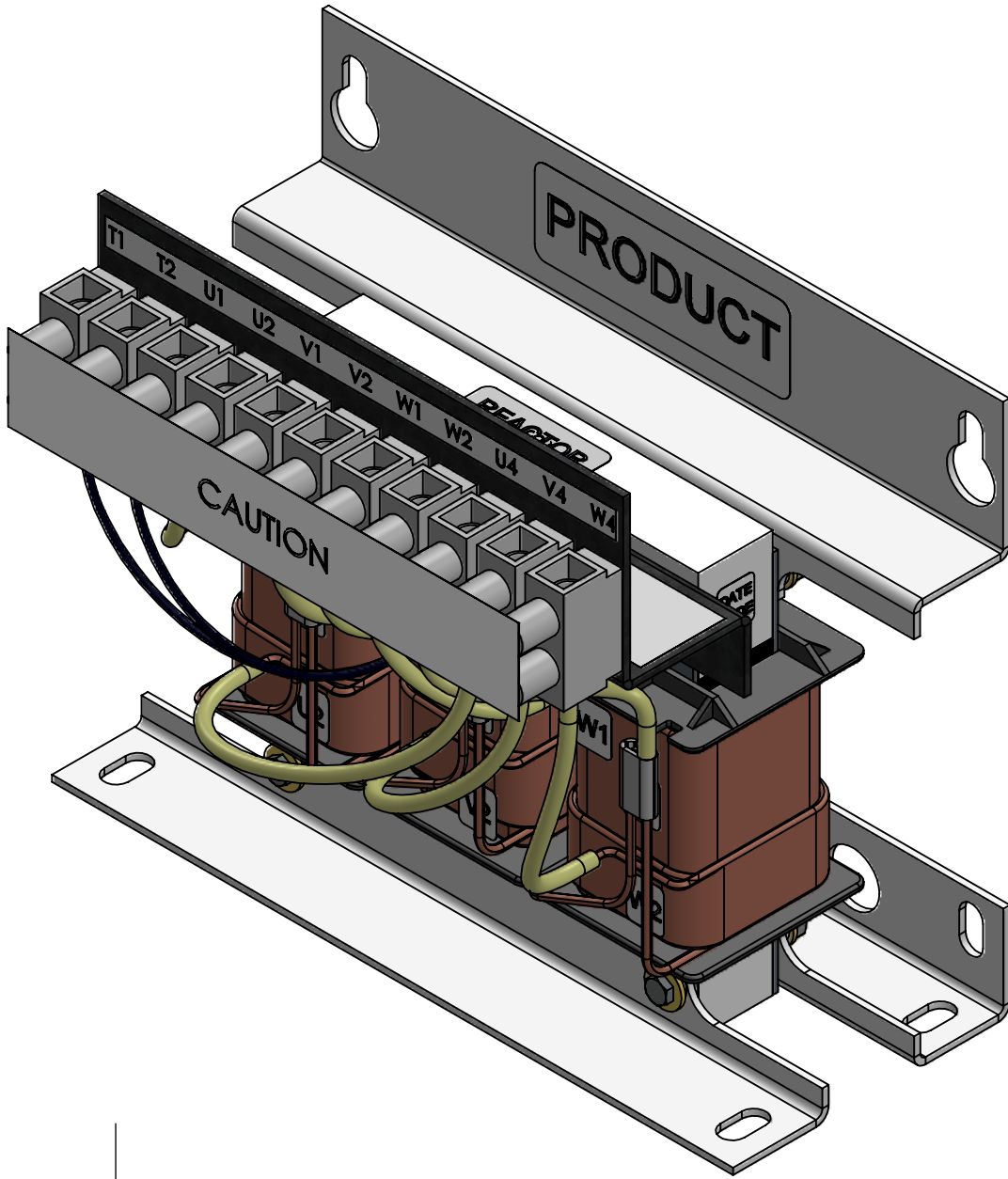
ECO No	DESCRIPTION	REV BY	DATE



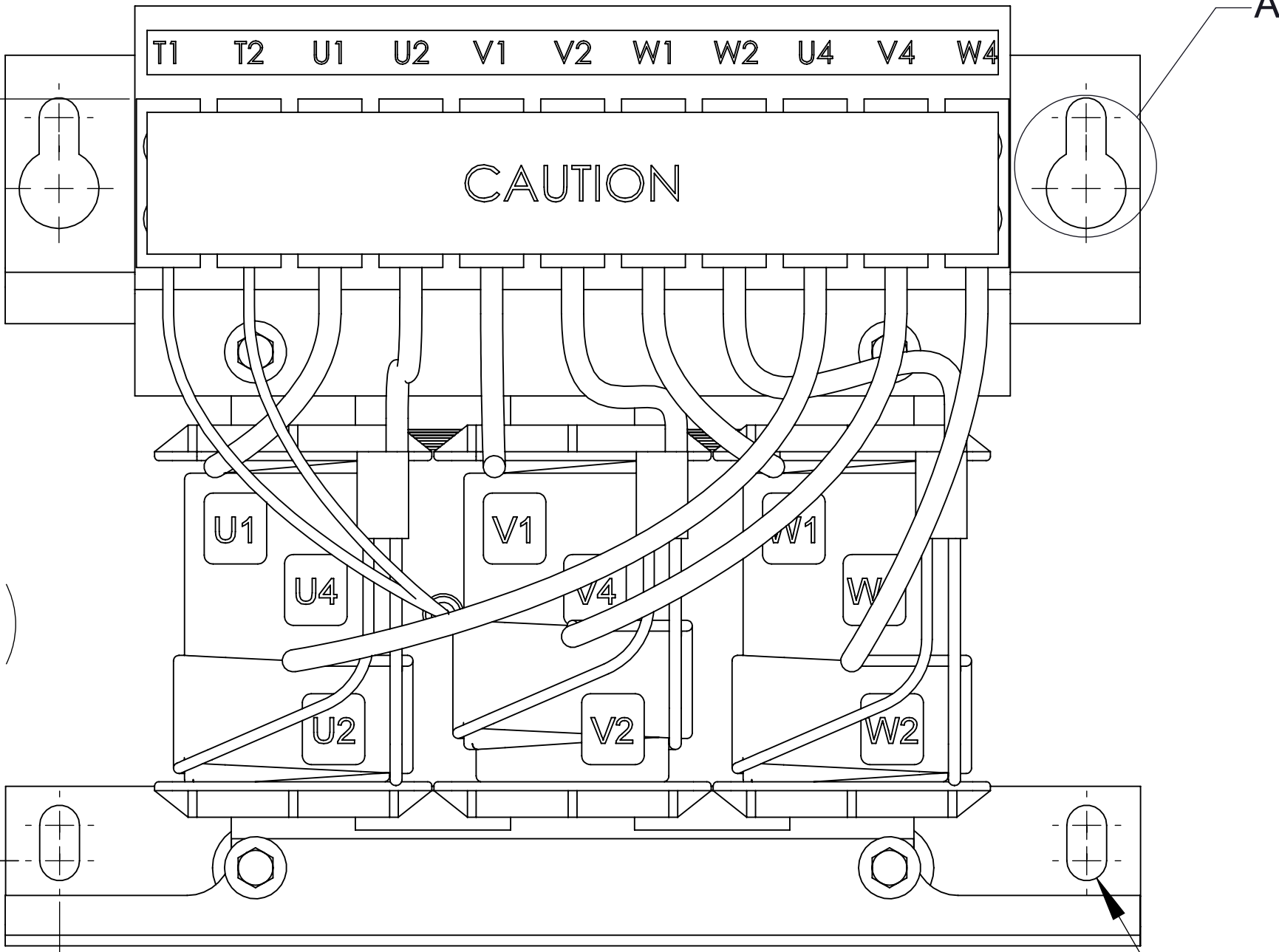
TOP VIEW



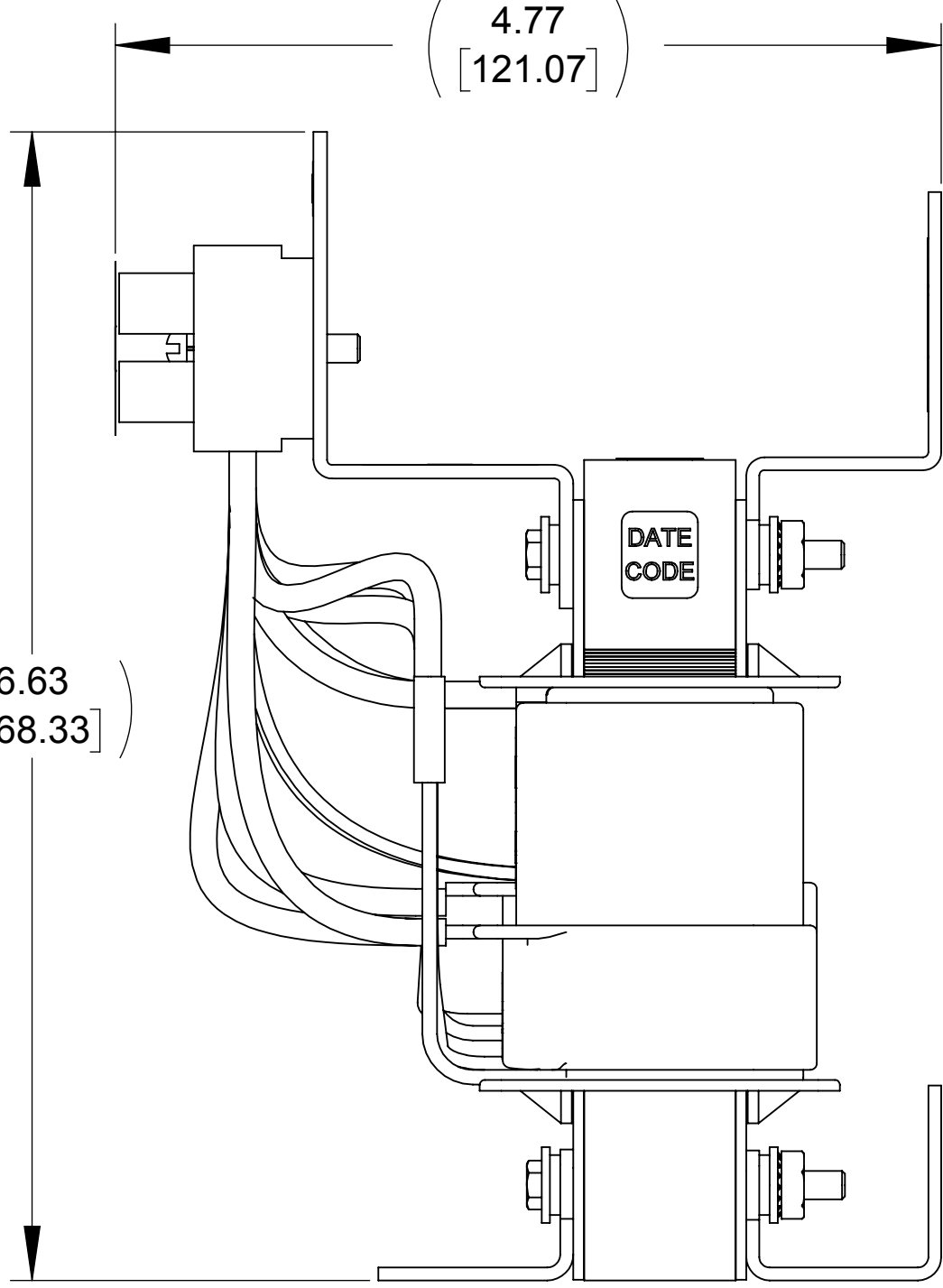
BOTTOM VIEW



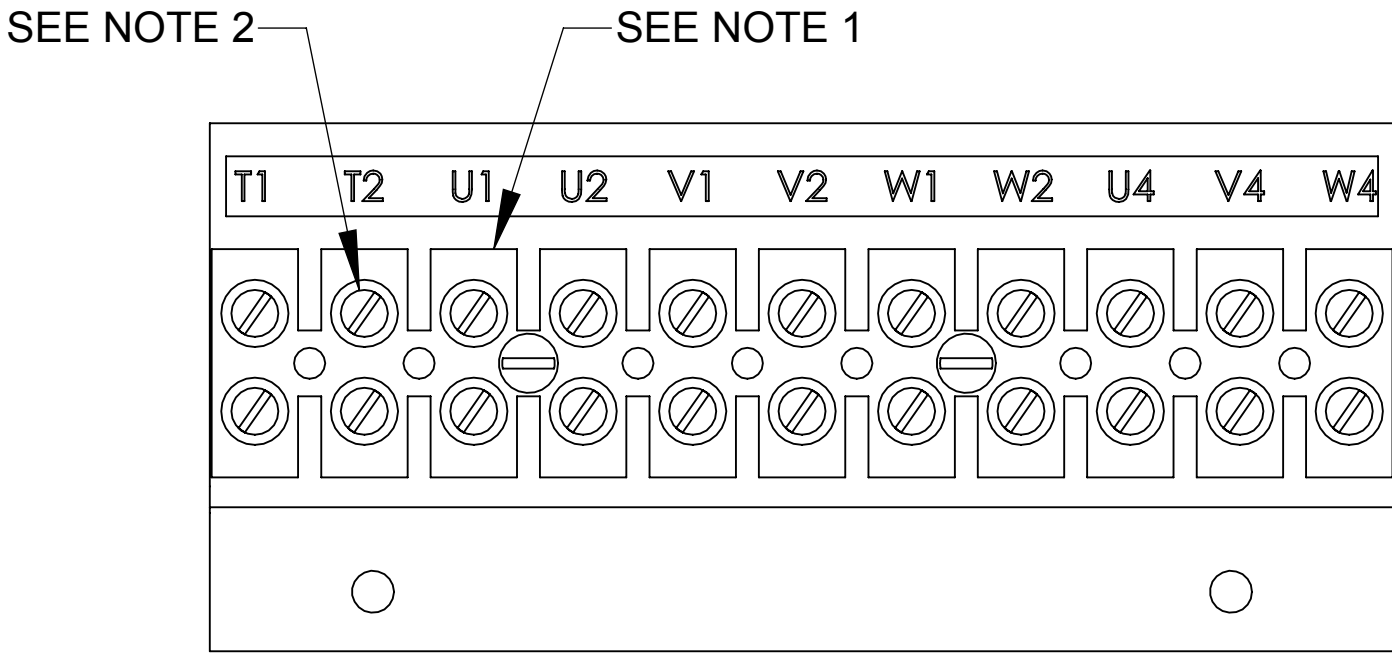
DETAIL A  
(2 PLACES)



FRONT VIEW



SIDE VIEW



CUSTOMER CONNECTION  
DETAIL VIEW  
LABEL REMOVED

NOTES:

1. TERMINAL WIRE RANGE: 4-14 AWG.
2. TERMINAL SCREW TIGHTENING TORQUE: 16 IN/LBS.
3. REFER TO USER MANUAL FOR COMPLETE INSTALLATION INSTRUCTIONS.
4. FILTER INCLUDES: CAP-507SW (QTY. 1)

THE COMPONENT, PART OR ASSEMBLY DESCRIBED IN THIS DOCUMENT MUST COMPLY WITH THE EU(EUROPEAN UNION) DIRECTIVE RoHS2		MATERIAL		CONFIDENTIAL AND PROPRIETARY INFORMATION THIS DOCUMENT CONTAINS CONFIDENTIAL AND PROPRIETARY INFORMATION OF MTE CORPORATION AND MAY NOT BE USED, COPIED OR DISCLOSED TO OTHERS EXCEPT WITH THE AUTHORIZED WRITTEN PERMISSION OF MTE CORPORATION	
CONTAINS <0.1% OF ANY SVHC BY WEIGHT PER REACH REGULATION				DESCRIPTION	
UNLESS OTHERWISE SPECIFIED DIMENSIONS ARE IN INCHES [MM] TOLERANCES ARE: ANGLES: ± 1 ° 1 PLACE .X: ± .1 [2.5] 2 PLACE .XX: ± .03 [0.76] 3 PLACE .XXX: ± .010 [0.254]		<b>MTE</b> POWER QUALITY. SOLVED. N83 W13330 Leon Road Menomonee Falls, WI 53051 USA 800.455-4683 262.253-8200		SWG 9A 208-240V 2-8kHz FILTER, OPEN PANEL	
		DRAWN JD	DATE 07/03/19	SIZE D	DWG No. CD SWGM0009A
		CHECKED JD	DATE 08/07/19	REV 00	
		APPROVED PY	DATE 11/19/19	SCALE 1:1	SHEET 1 OF 1