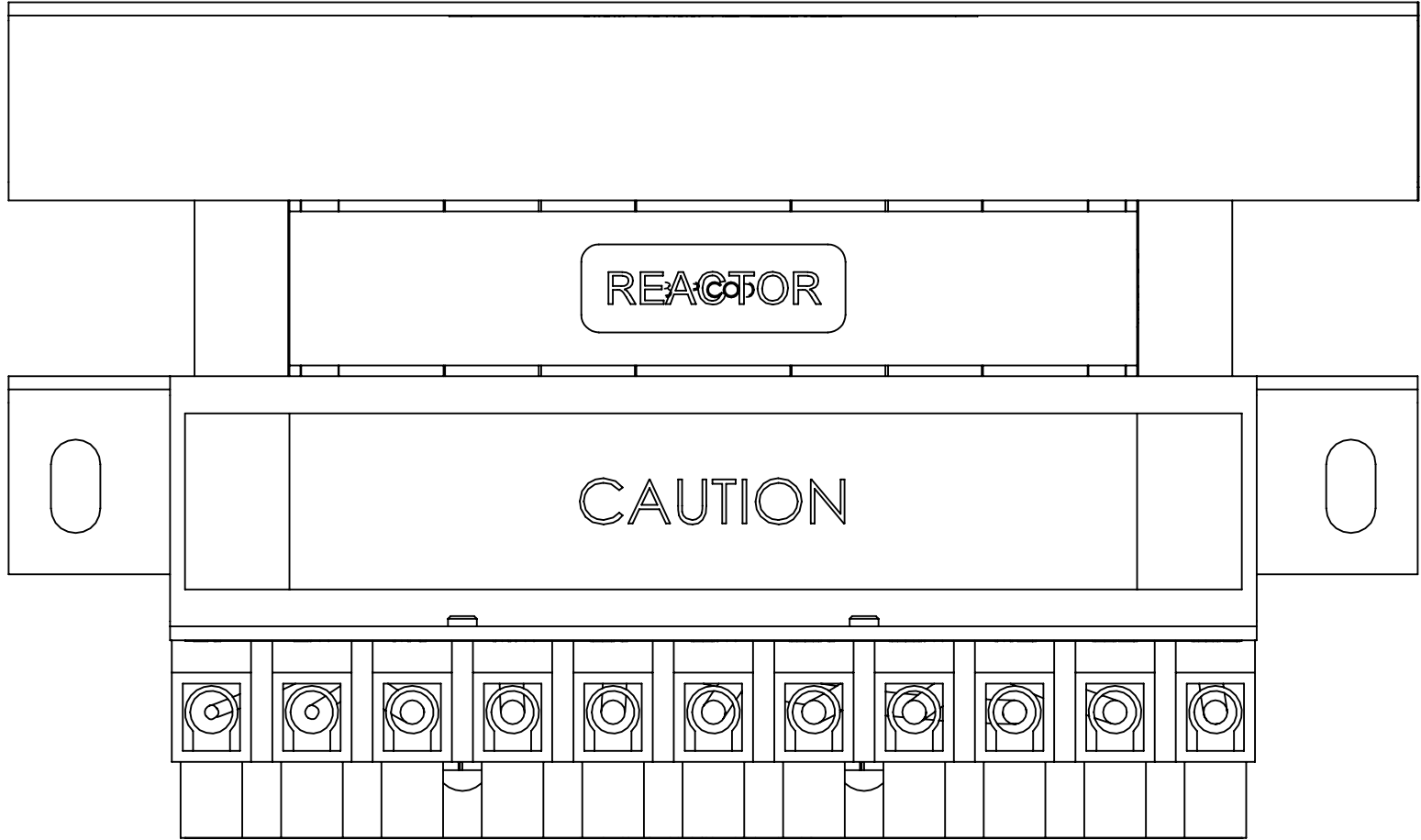
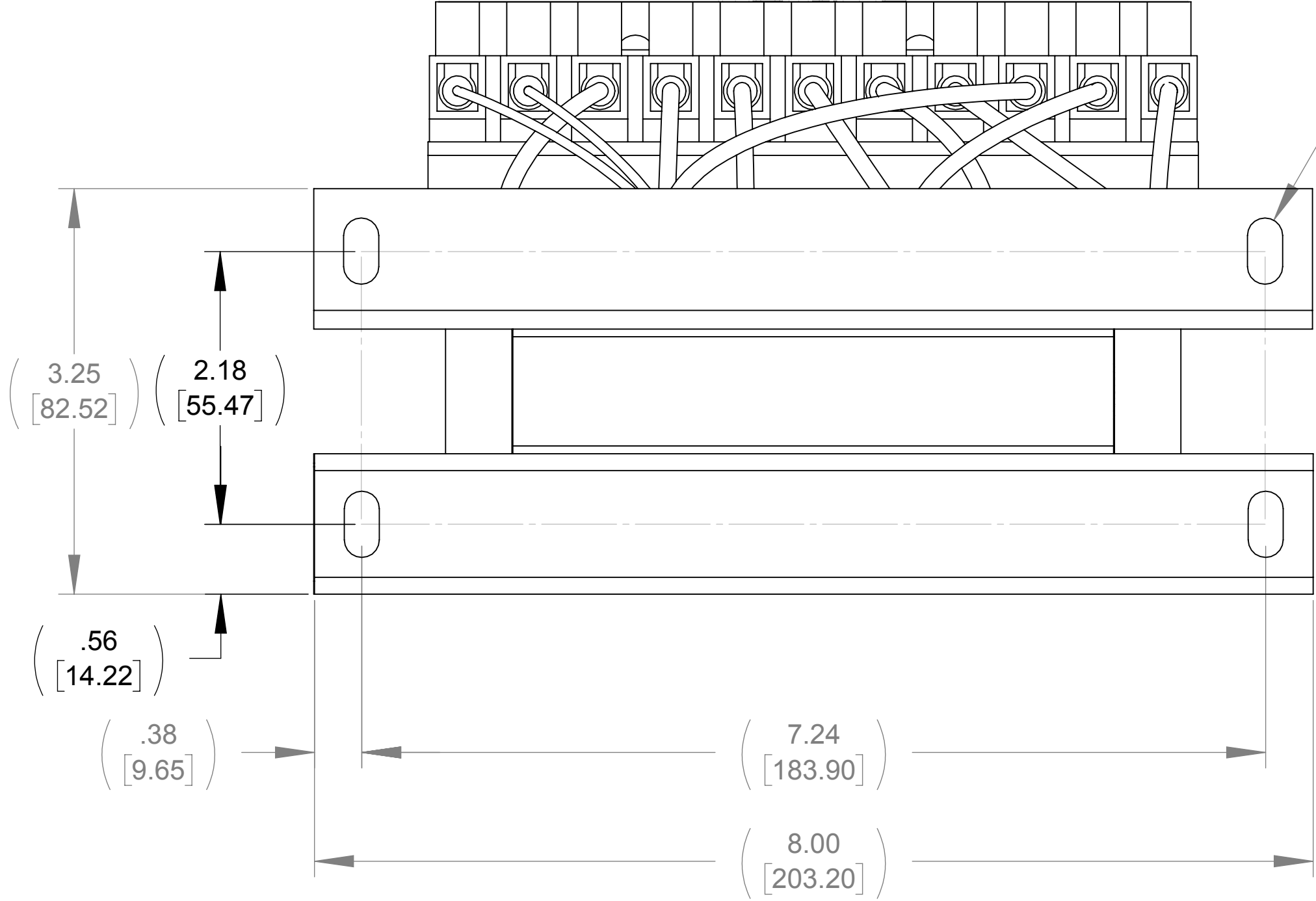


WEIGHT (LBS)
12

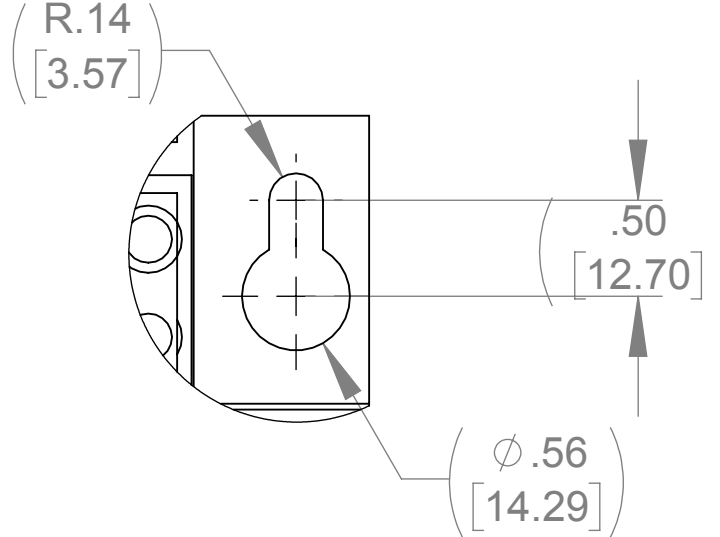
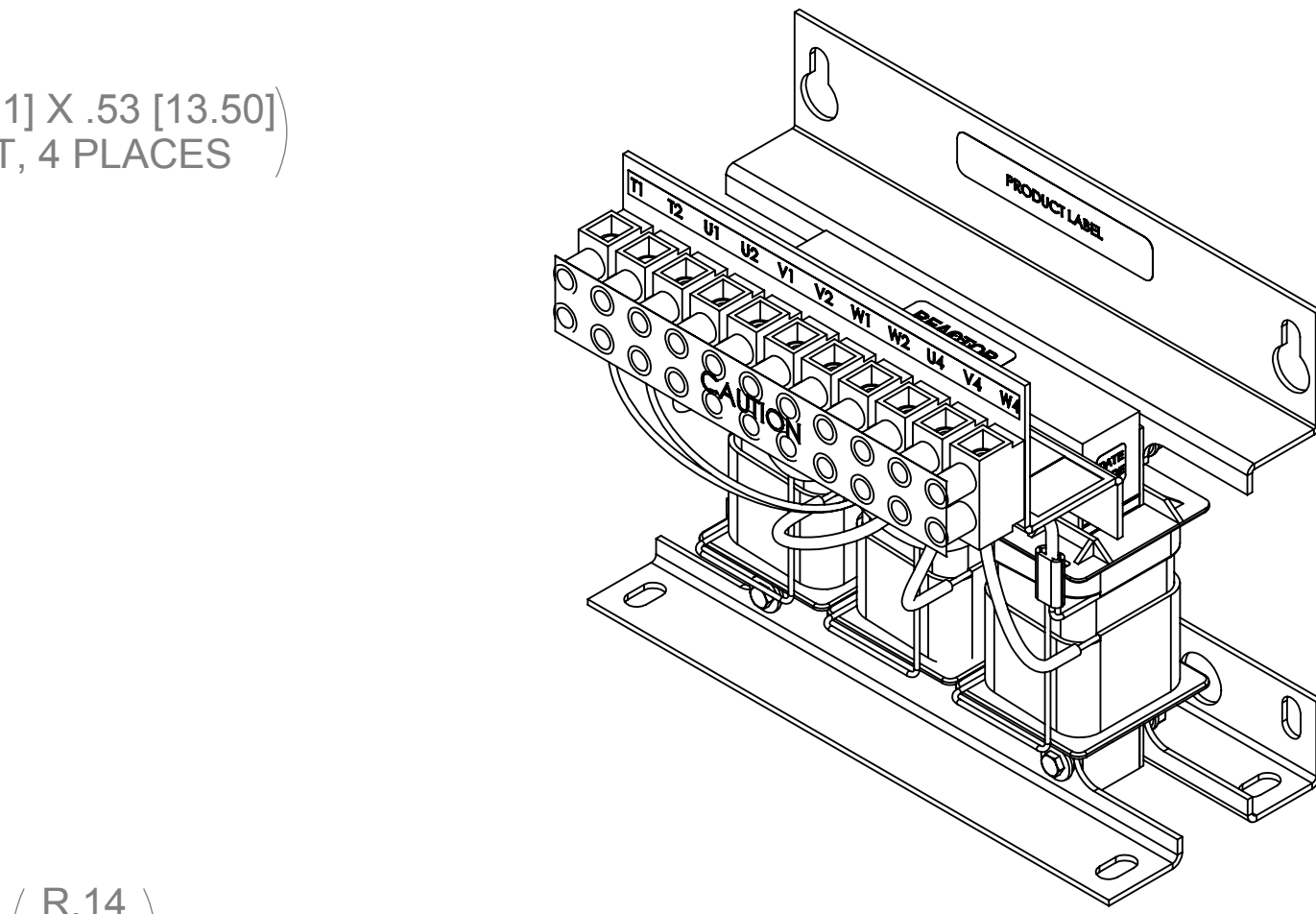
| ECO No | DESCRIPTION | REV BY | DATE |
|--------|------------------------|--------|----------|
| M9353 | UPDATED LABEL GRAPHICS | JT | 11/03/14 |



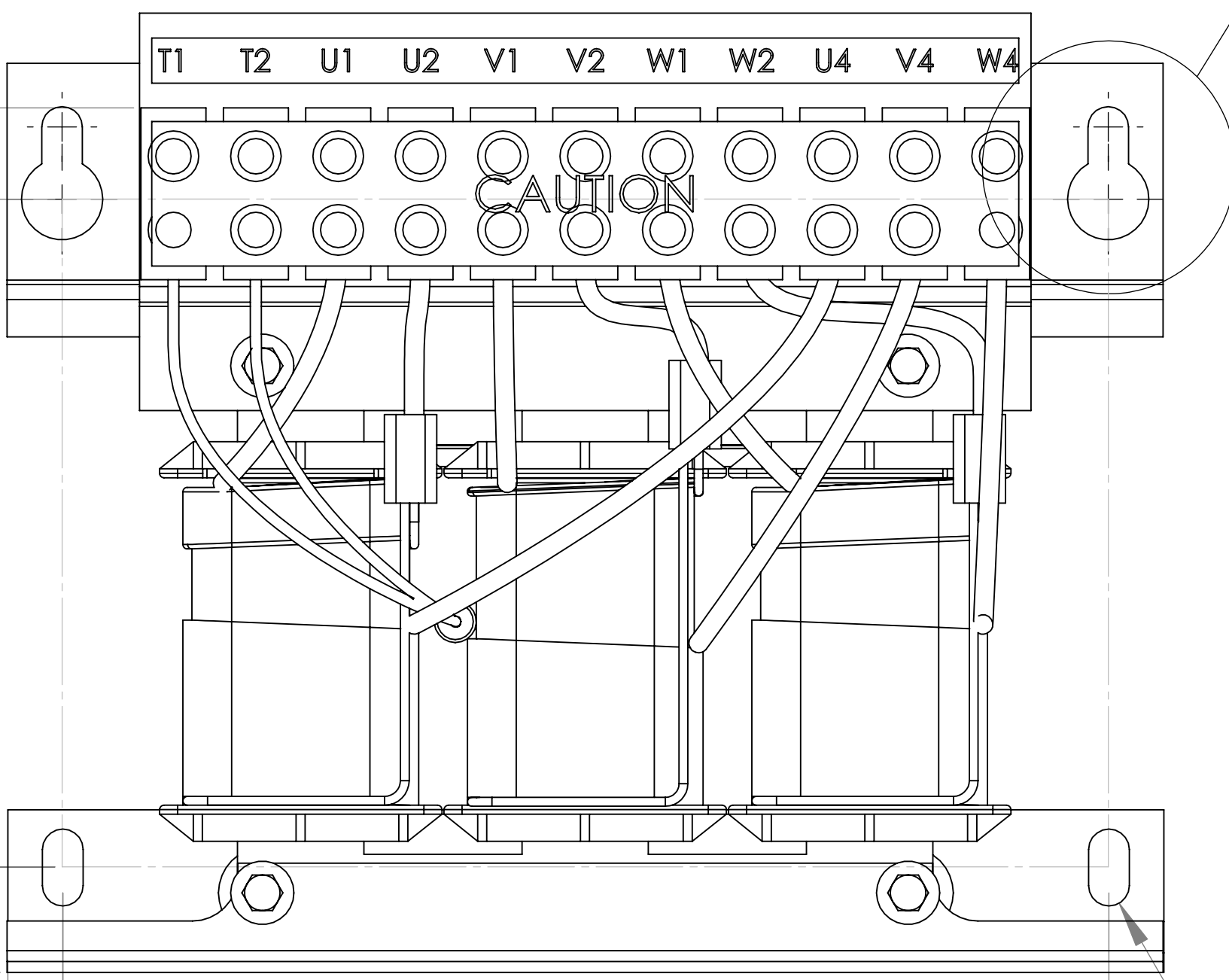
TOP VIEW



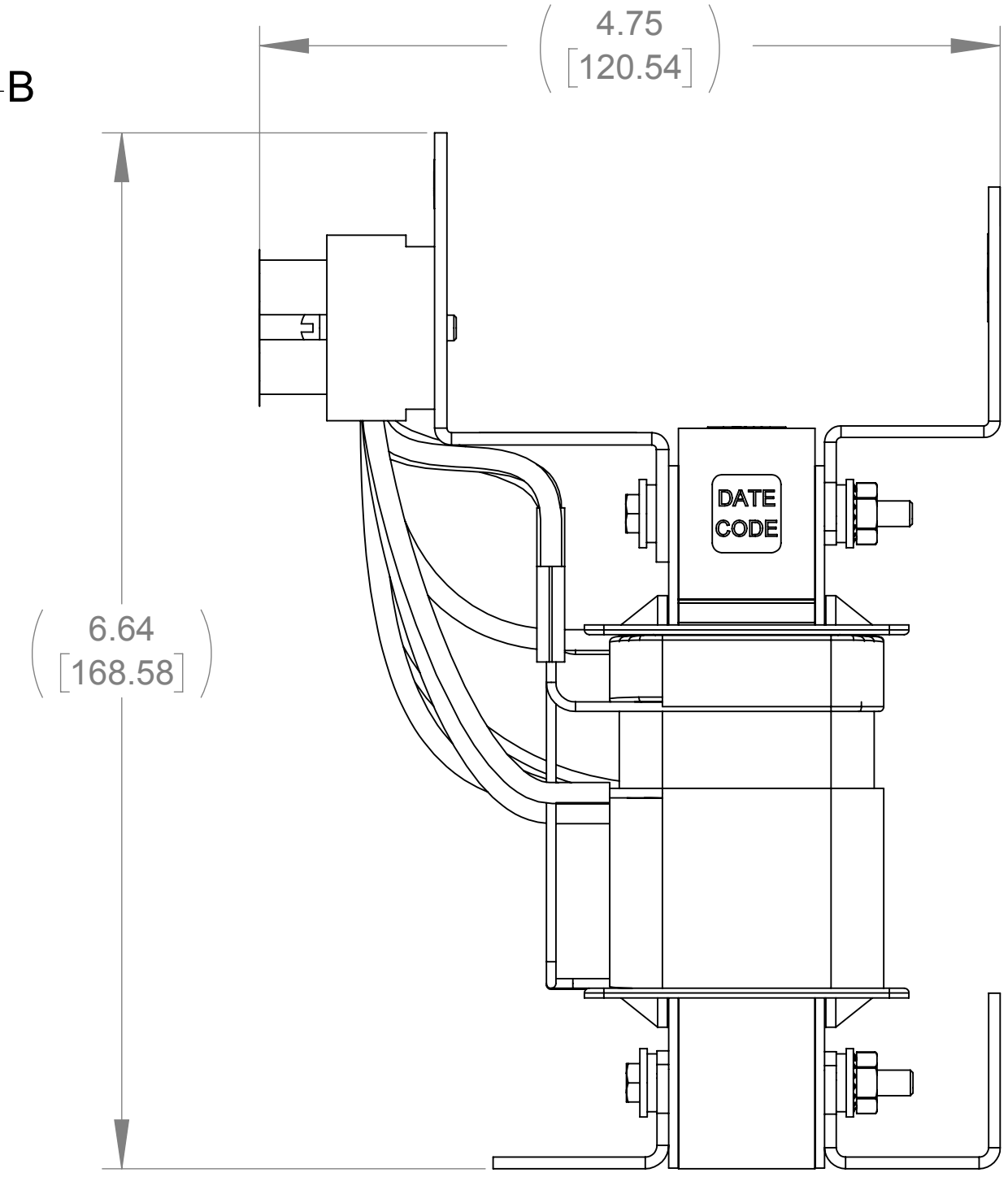
BOTTOM VIEW



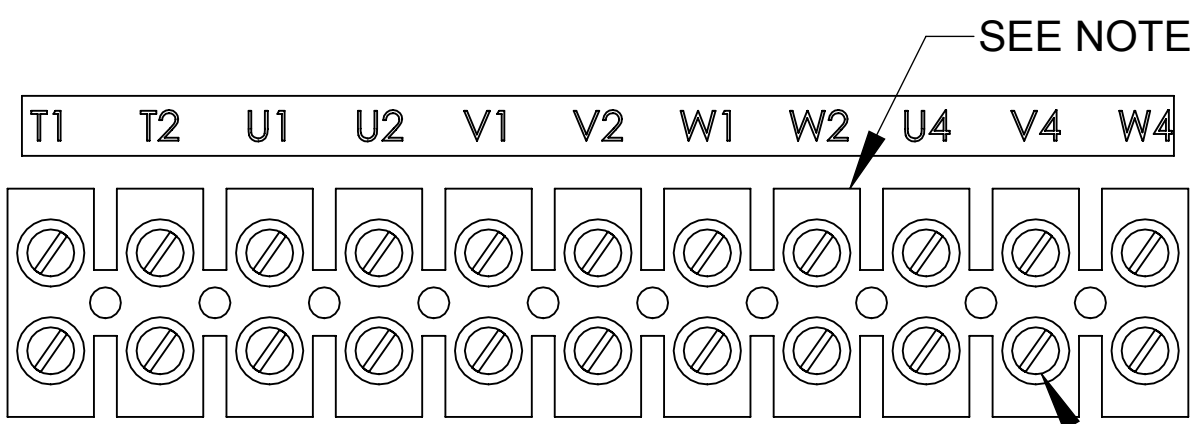
DETAIL B
(2 PLACES)



FRONT VIEW



RIGHT SIDE VIEW



CUSTOMER CONNECTION
DETAIL VIEW

- NOTES:
1. TIGHTEN TERMINAL BLOCK SCREWS TO 16 IN/LBS. TORQUE, MAX.
2. TERMINAL WIRE SIZE: 4-14 AWG.
3. FILTER REQUIRES CAP-503SW (QTY. 1)

| | | | | | |
|--|--|----------------------------|--|--|--|
| THE COMPONENT, PART OR ASSEMBLY DESCRIBED IN THIS DOCUMENT MUST COMPLY WITH THE EU(EUROPEAN UNION) DIRECTIVE RoHS2 | | MATERIAL | | CONFIDENTIAL AND PROPRIETARY INFORMATION THIS DOCUMENT CONTAINS CONFIDENTIAL AND PROPRIETARY INFORMATION OF MTE CORPORATION AND MAY NOT BE USED, COPIED OR DISCLOSED TO OTHERS EXCEPT WITH THE AUTHORIZED WRITTEN PERMISSION OF MTE CORPORATION | |
| CONTAINS <0.1% OF ANY SVHC BY WEIGHT PER REACH REGULATION | | | | DESCRIPTION | |
| UNLESS OTHERWISE SPECIFIED DIMENSIONS ARE IN INCHES [MM] TOLERANCES ARE: ANGLES: ± 1 ° 1 PLACE .X: ± .1 [2.5] 2 PLACE .XX: ± .03 [0.76] 3 PLACE .XXX: ± .010 [0.254] | | DRAWN MN 09/19/13 | | DATE 11/04/14 | |
| MTE AN BL POWER ELECTRONICS COMPANY N83 W13330 Leon Road Menomonee Falls, WI 53051 USA 800.455-4683 262.253.8200 | | CHECKED JM 11/04/14 | | DATE 11/04/14 | |
| | | APPROVED JM 11/04/14 | | SIZE D CD SWGM0005D | |
| | | | | REV 02 | |
| | | | | SCALE 1:1 | |
| | | | | SHEET 1 OF 1 | |