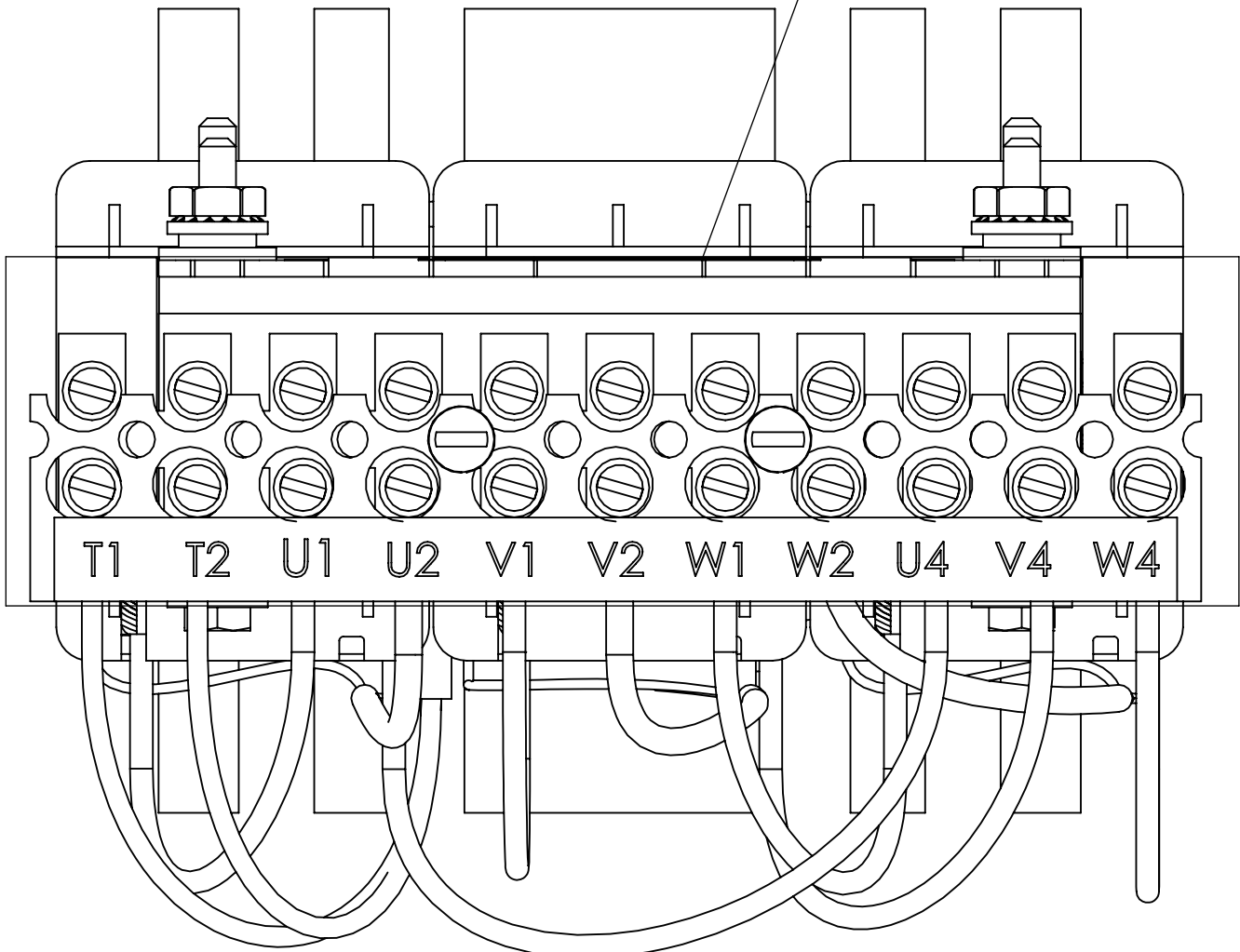
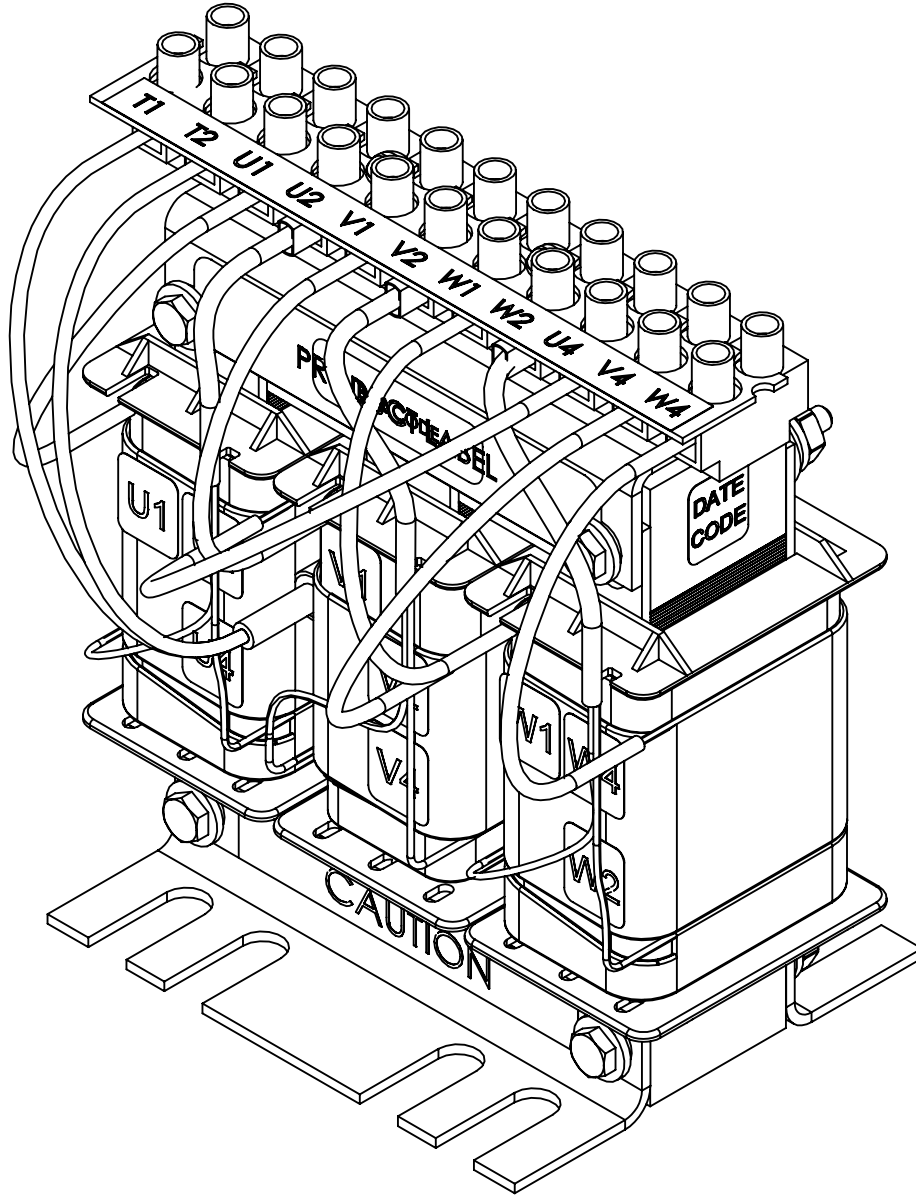
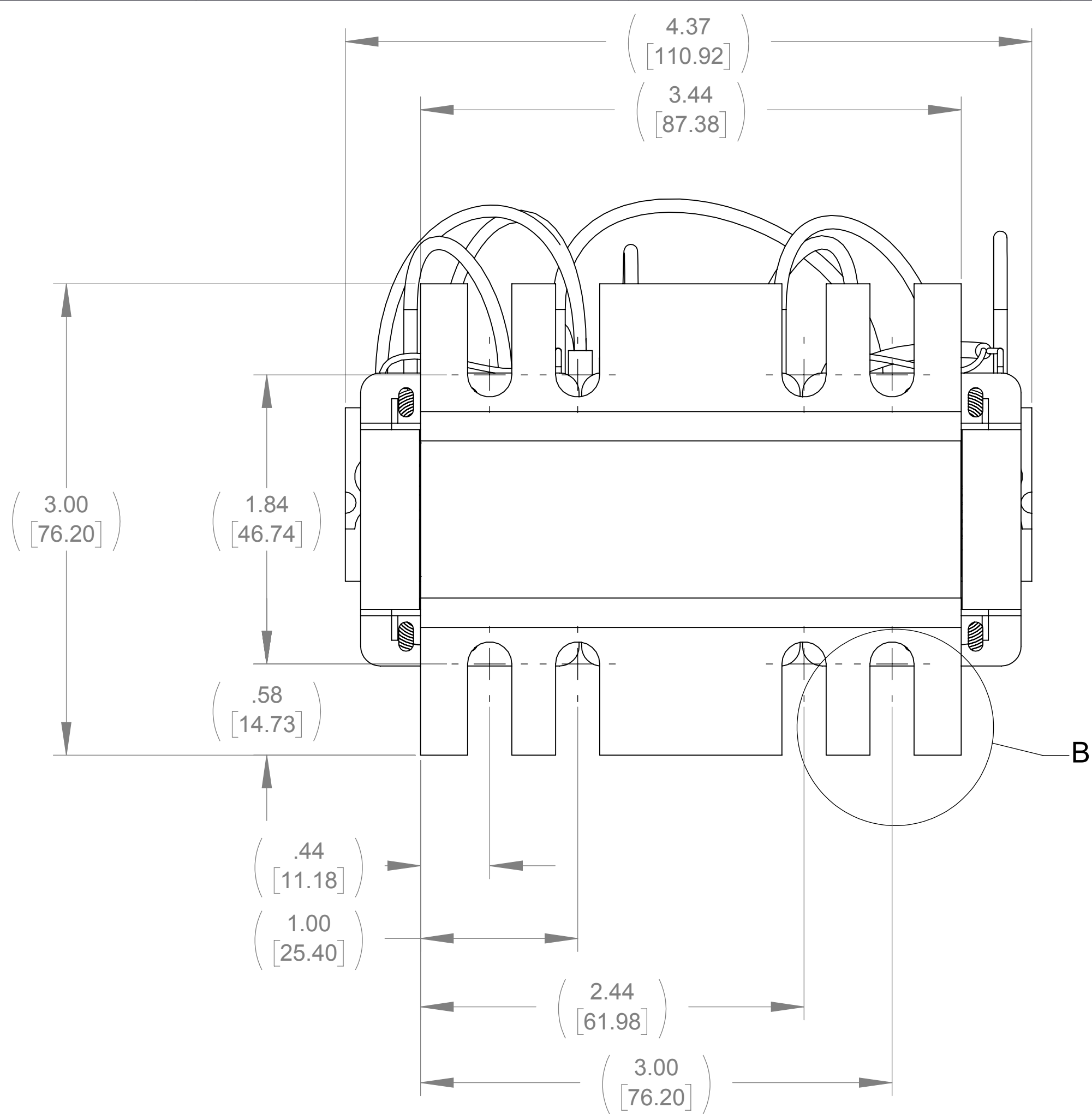


APPROX. WEIGHT
(LBS)
8

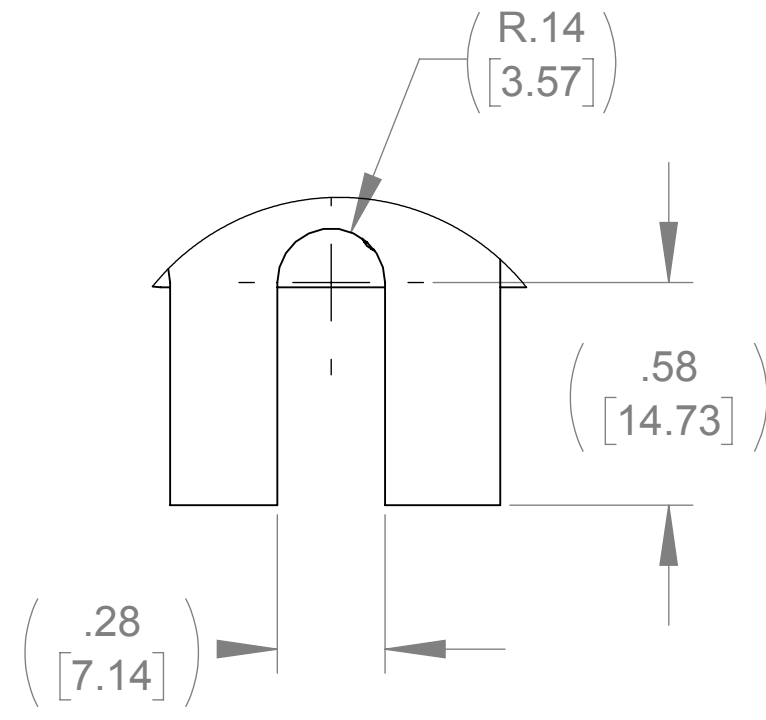
ECO No	DESCRIPTION	REV BY	DATE



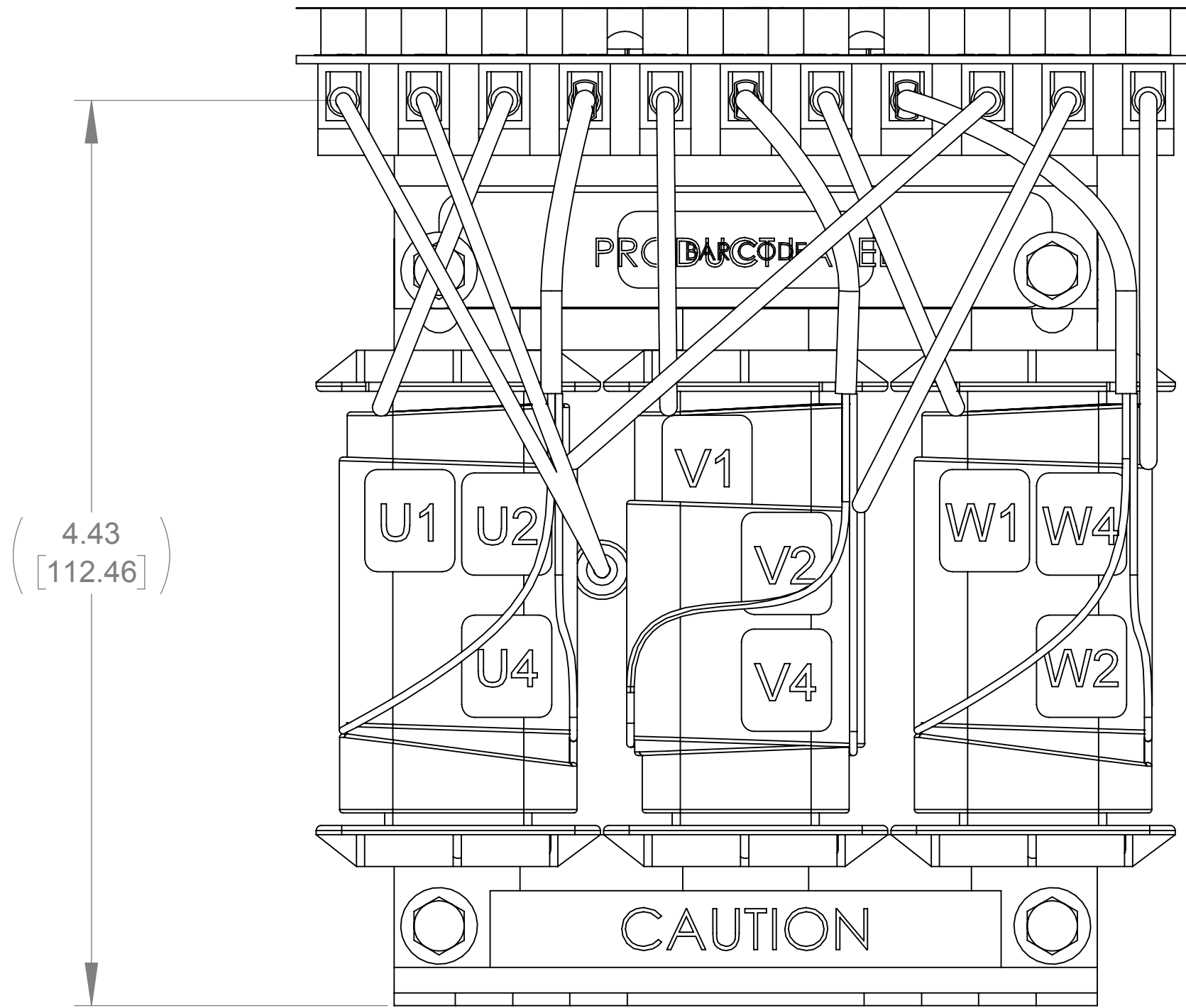
TOP VIEW



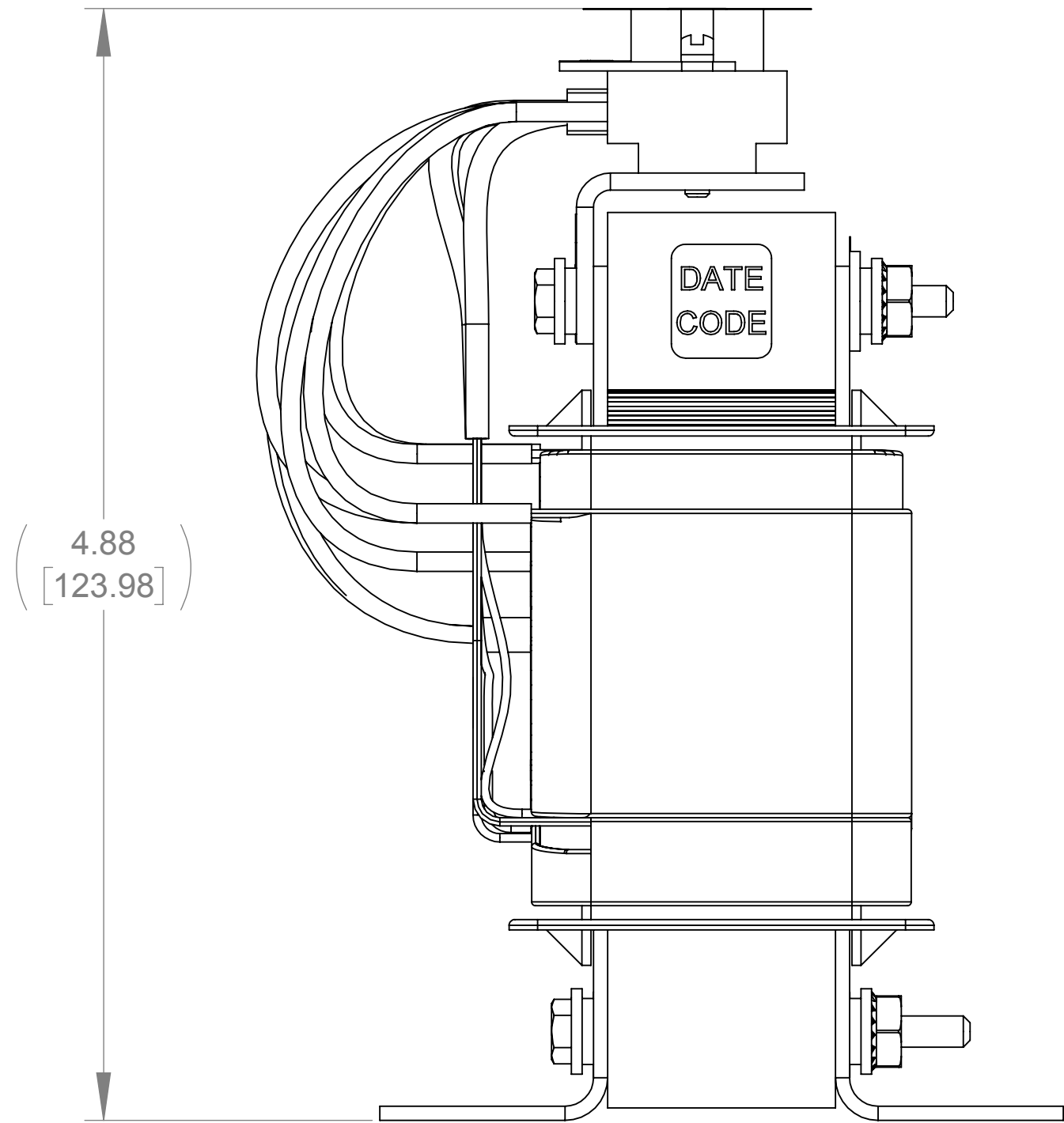
BOTTOM VIEW



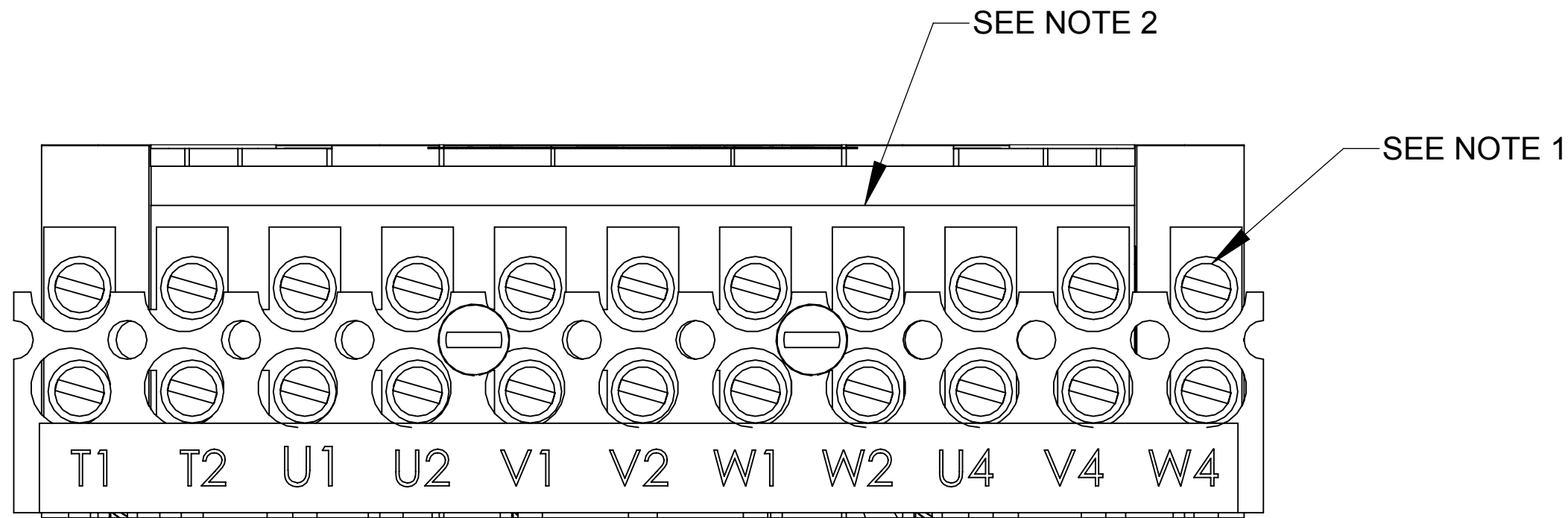
DETAIL B
(8 PLACES)



FRONT VIEW




RIGHT SIDE VIEW



DETAIL A
CUSTOMER CONNECTION
DETAIL VIEW

- NOTES:
1. TIGHTEN TERMINAL BLOCK SCREWS TO 16 IN/LBS. TORQUE.
2. TERMINAL WIRE SIZE: 4-14 AWG.
3. FILTER REQUIRES: CAP-534SW (QTY. 1).

THE COMPONENT, PART OR ASSEMBLY DESCRIBED IN THIS DOCUMENT MUST COMPLY WITH THE EU(EUROPEAN UNION) DIRECTIVE RoHS2		MATERIAL		CONFIDENTIAL AND PROPRIETARY INFORMATION THIS DOCUMENT CONTAINS CONFIDENTIAL AND PROPRIETARY INFORMATION OF MTE CORPORATION AND MAY NOT BE USED, COPIED OR DISCLOSED TO OTHERS EXCEPT WITH THE AUTHORIZED WRITTEN PERMISSION OF MTE CORPORATION					
CONTAINS <0.1% OF ANY SVHC BY WEIGHT PER REACH REGULATION				DESCRIPTION					
<div>UNLESS OTHERWISE SPECIFIED DIMENSIONS ARE IN INCHES [MM] TOLERANCES ARE:</div> <div>ANGLES: ± 1 °</div> <div>1 PLACE .X: ± .1 [2.5]</div> <div>2 PLACE .XX: ± .03 [0.76]</div> <div>3 PLACE .XXX: ± .010 [0.254]</div>		<div><div>N83 W13330 Leon Road Menomonee Falls, WI 53051 USA 800.455-4683 262.253.8200</div></div>		<div>DRAWN</div> <div>WF</div> <div>CHECKED</div> <div>WF</div> <div>APPROVED</div> <div>TL</div>		<div>DATE</div> <div>07/23/18</div> <div>DATE</div> <div>08/03/18</div> <div>DATE</div> <div>10/10/18</div>		<div>SIZE</div> <div>D</div> <div>DWG No.</div> <div>CD SWGM0002E</div> <div>SCALE</div> <div>1.5:1</div> <div>REV</div> <div>00</div> <div>SHEET 1 OF 1</div>	