

APPROX. WEIGHT (LBS)
1921

ECO No	DESCRIPTION	REV BY	DATE
M9736	UPDATED CAPPANEL WITH CDE CAPS	MN	01/08/16

D

C

B

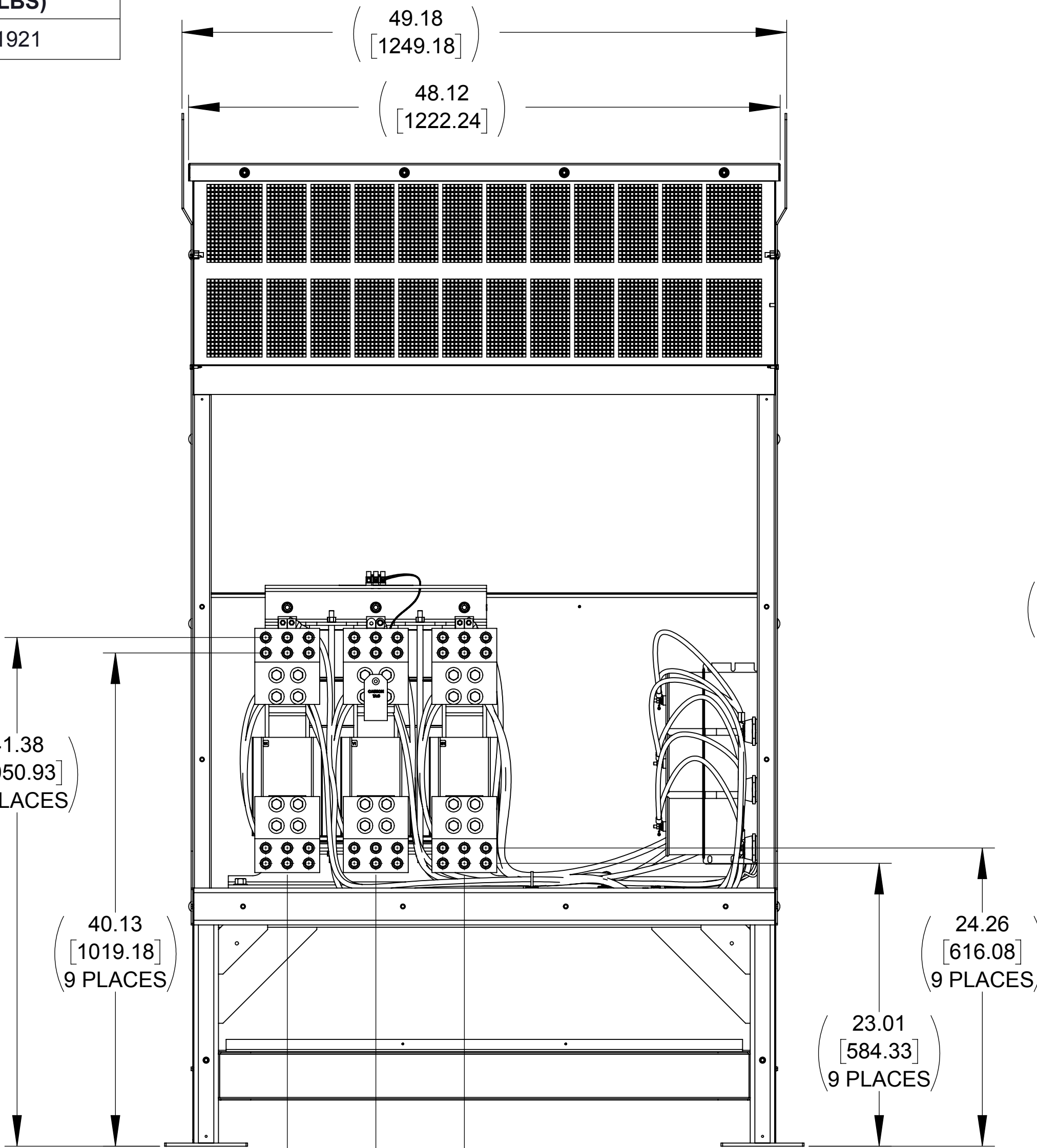
A

D

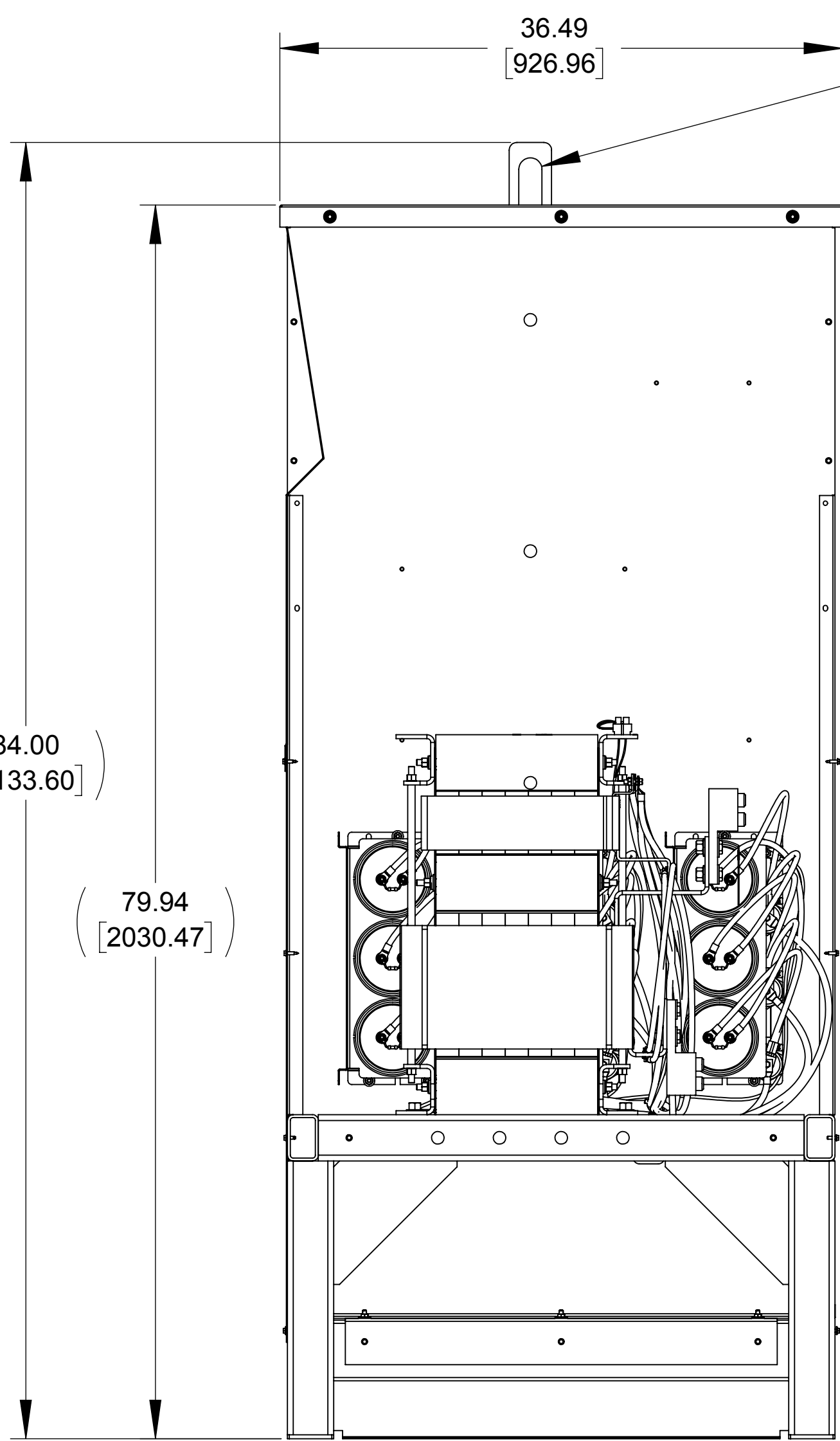
C

B

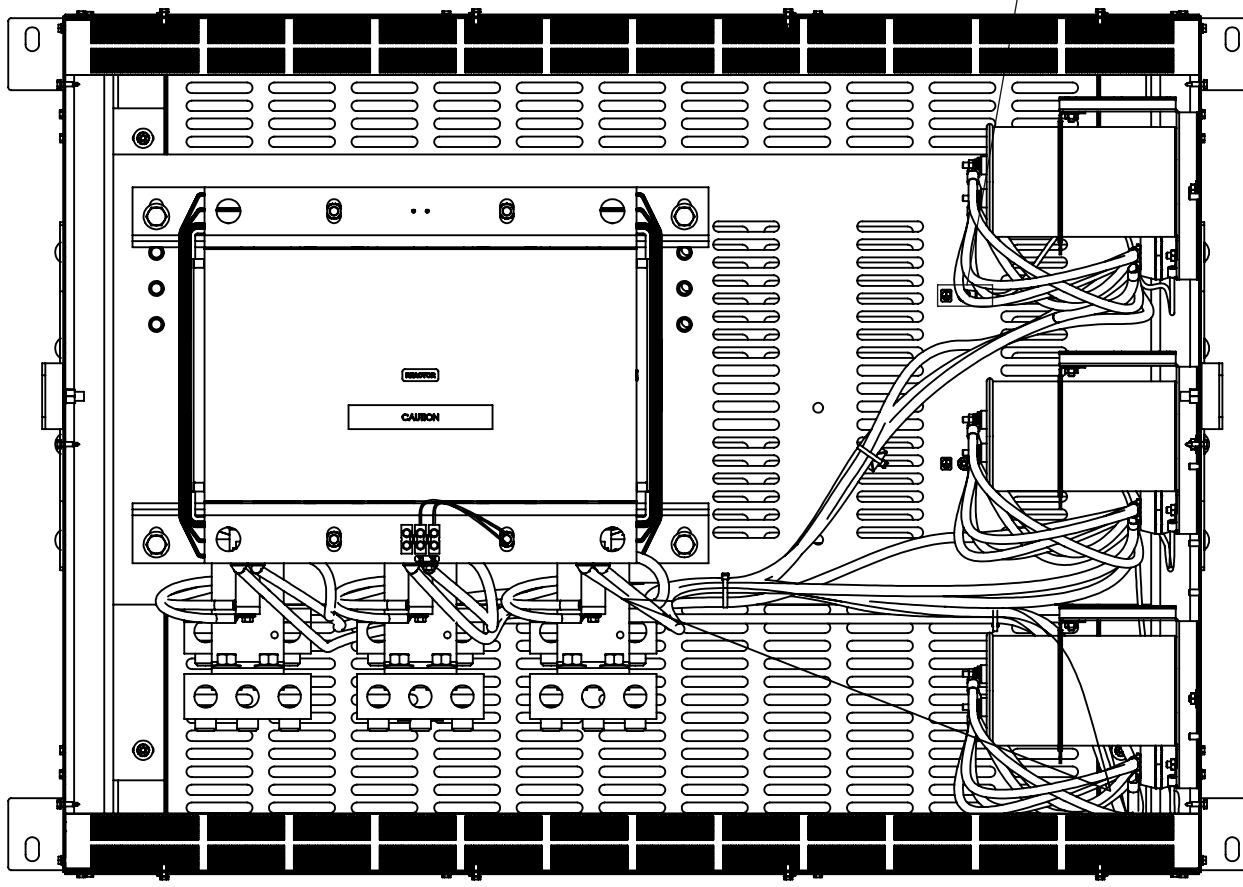
A



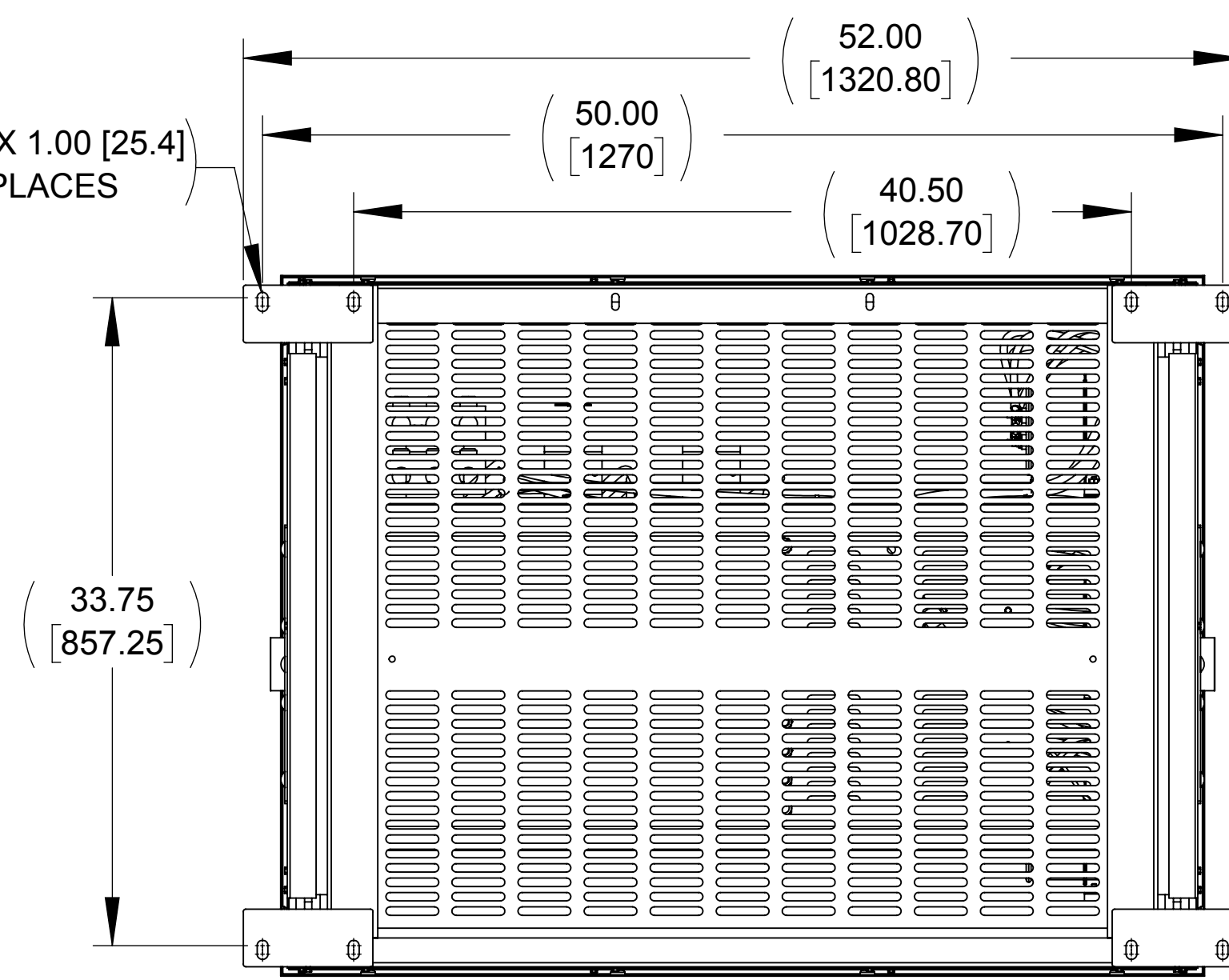
FRONT VIEW  
(PANELS REMOVED)



SIDE VIEW  
(PANELS REMOVED)

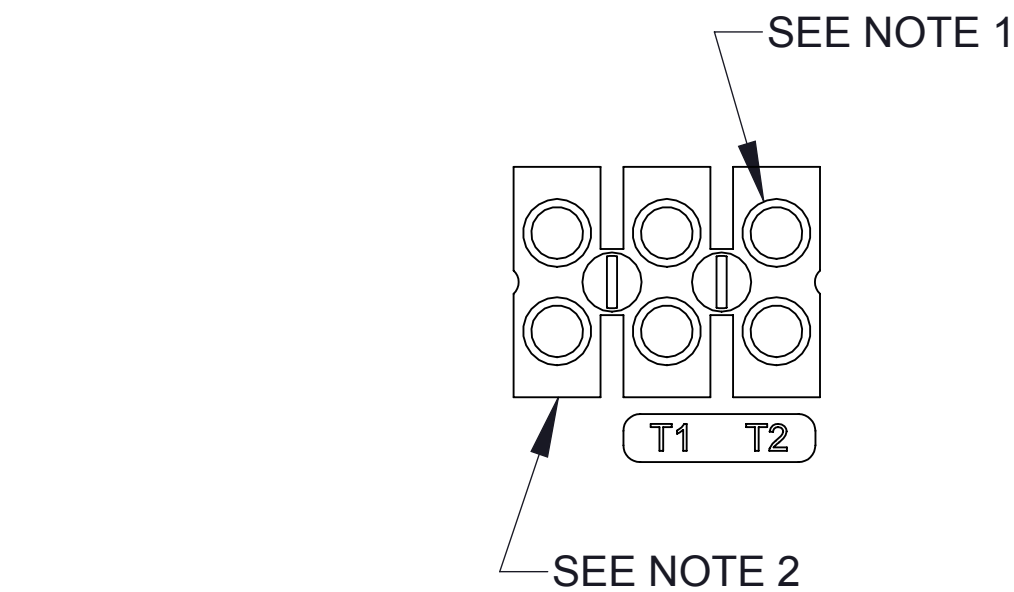
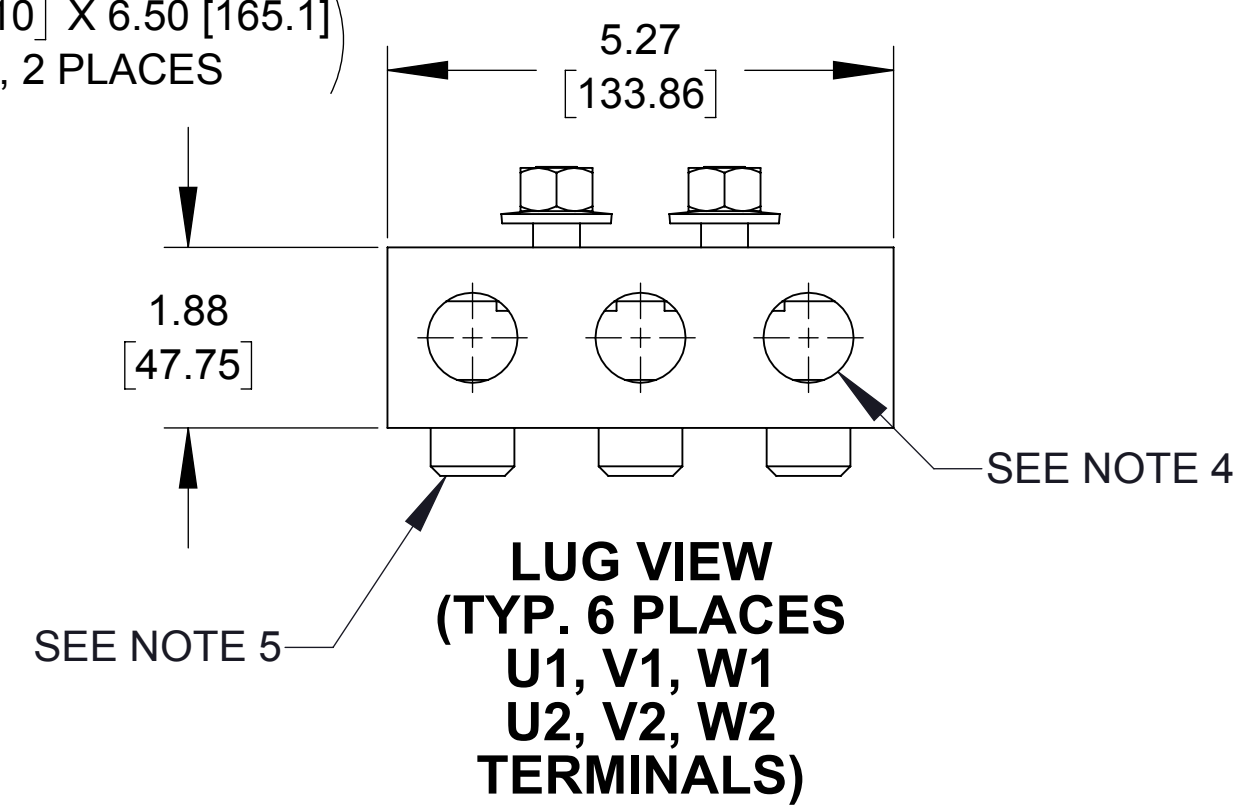


TOP VIEW  
(PANELS REMOVED)

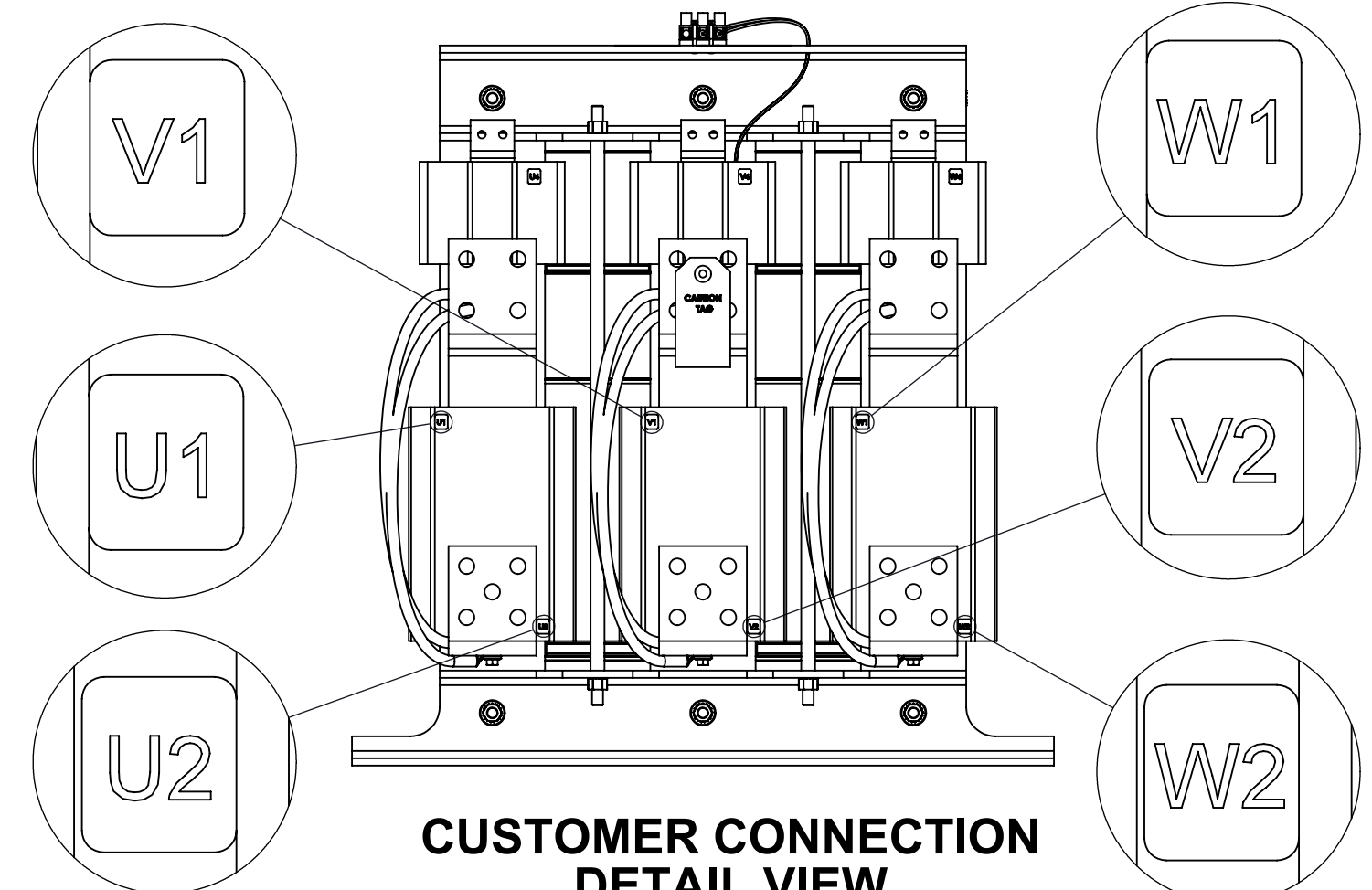
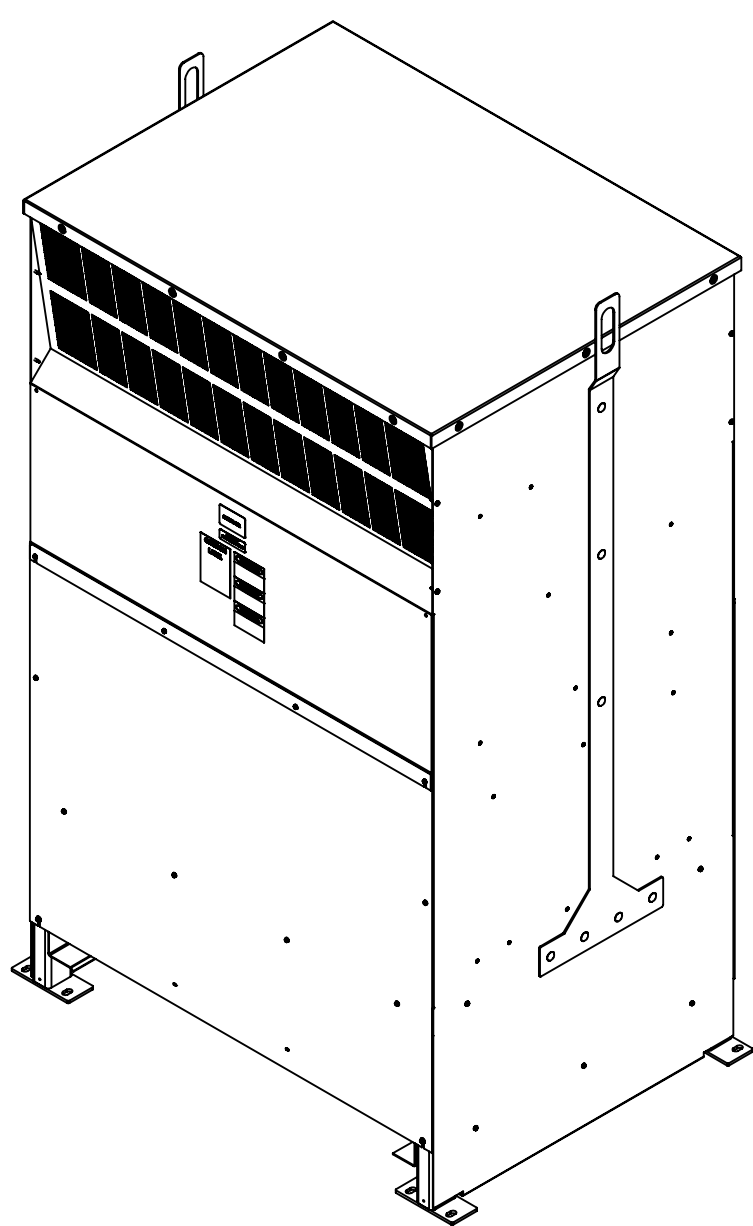


BOTTOM VIEW

Ø 1.50 [38.10] X 6.50 [165.1]  
SLOT, 2 PLACES




CUSTOMER CONNECTION  
DETAIL VIEW (THERMAL)



CUSTOMER CONNECTION  
DETAIL VIEW  
(WITH LUGS REMOVED)

NOTES:

1. TIGHTEN TERMINAL BLOCK SCREWS TO 16 IN/LBS. TORQUE.
2. TERMINAL WIRE RANGE: 4 - 14 AWG
3. TERMINAL WIRE RANGE: 6 AWG - 250 MCM
4. TERMINAL WIRE RANGE: 500 MCM - 1000 MCM
5. TIGHTEN TERMINAL BLOCK SCREWS TO 600 IN/LBS. TORQUE.

THE COMPONENT, PART OR ASSEMBLY DESCRIBED IN THIS DOCUMENT MUST COMPLY WITH THE EU(EUROPEAN UNION) DIRECTIVE RoHS2		MATERIAL		CONFIDENTIAL AND PROPRIETARY INFORMATION THIS DOCUMENT CONTAINS CONFIDENTIAL AND PROPRIETARY INFORMATION OF MTE CORPORATION AND MAY NOT BE USED, COPIED OR DISCLOSED TO OTHERS EXCEPT WITH THE AUTHORIZED WRITTEN PERMISSION OF MTE CORPORATION			
CONTAINS <0.1% OF ANY SVHC BY WEIGHT PER REACH REGULATION				DESCRIPTION			
UNLESS OTHERWISE SPECIFIED DIMENSIONS ARE IN INCHES [MM] TOLERANCES ARE:  ANGLES: ± 1 °  1 PLACE .X: ± .1 [2.5]  2 PLACE .XX: ± .01 [0.25]  3 PLACE .XXX: ± .005 [0.127]	 <b>MTE</b> <small>AN SL INDUSTRIES COMPANY</small>  N83 W13330 Leon Road Menomonee Falls, WI 53051 USA 800.455-4683 262.253-8200	DRAWN	DATE	SWG 1200A, 380-480V,2-8kHz NEMA 1/2			
		KV	09/22/14				
		CHECKED	DATE				
		JM	01/11/16				
		APPROVED	DATE	SIZE	DWG No.	REV	
		JM	01/11/16	D	CD SWGG1200D	01	
				SCALE	1:8	SHEET 1 OF 1	