

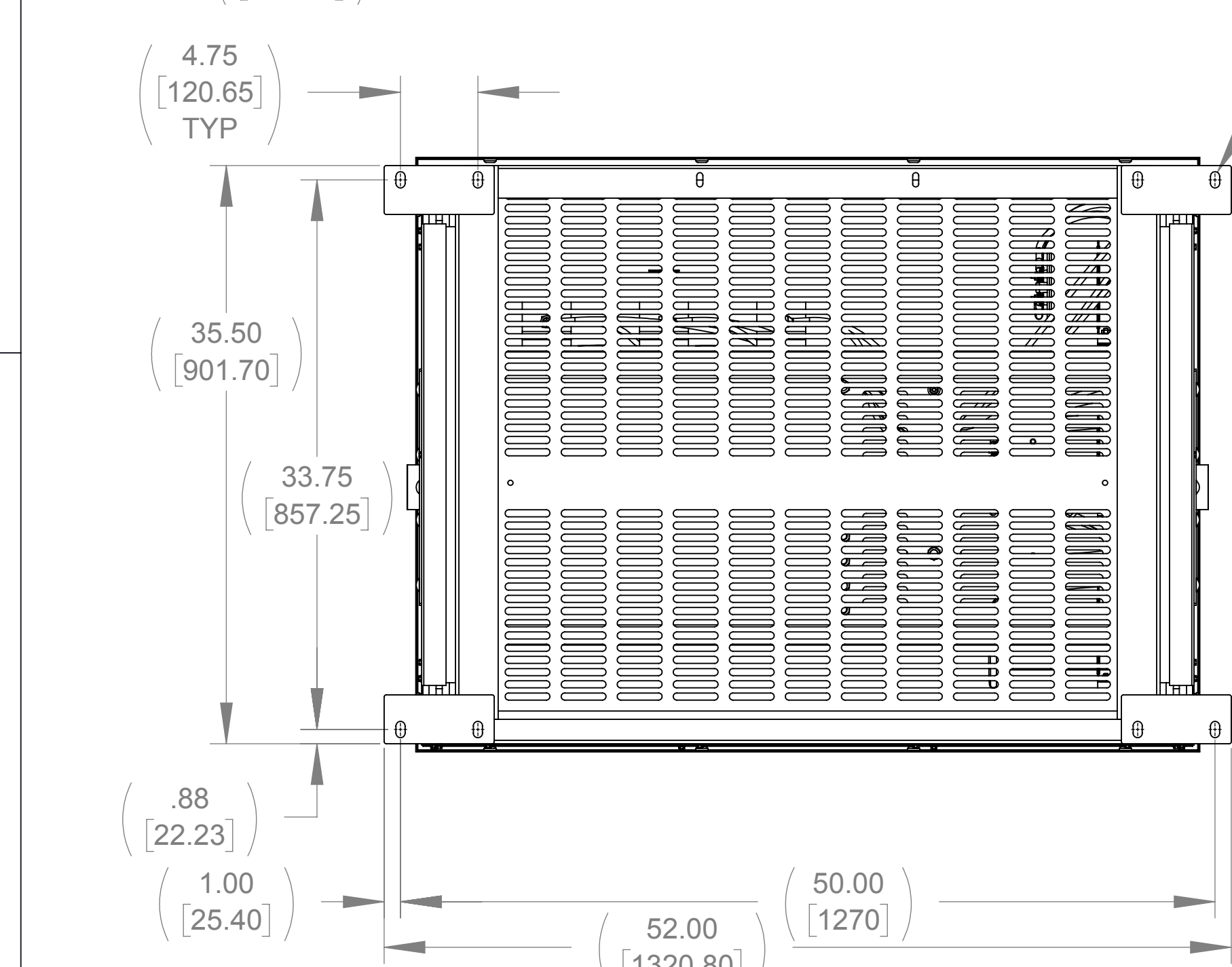
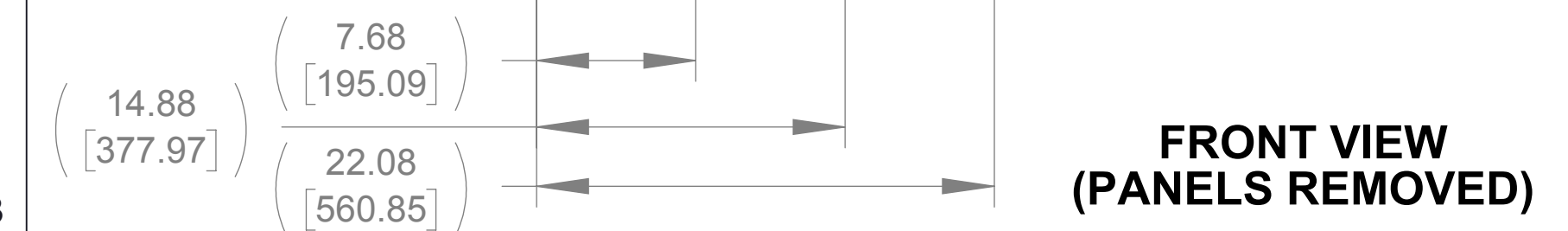
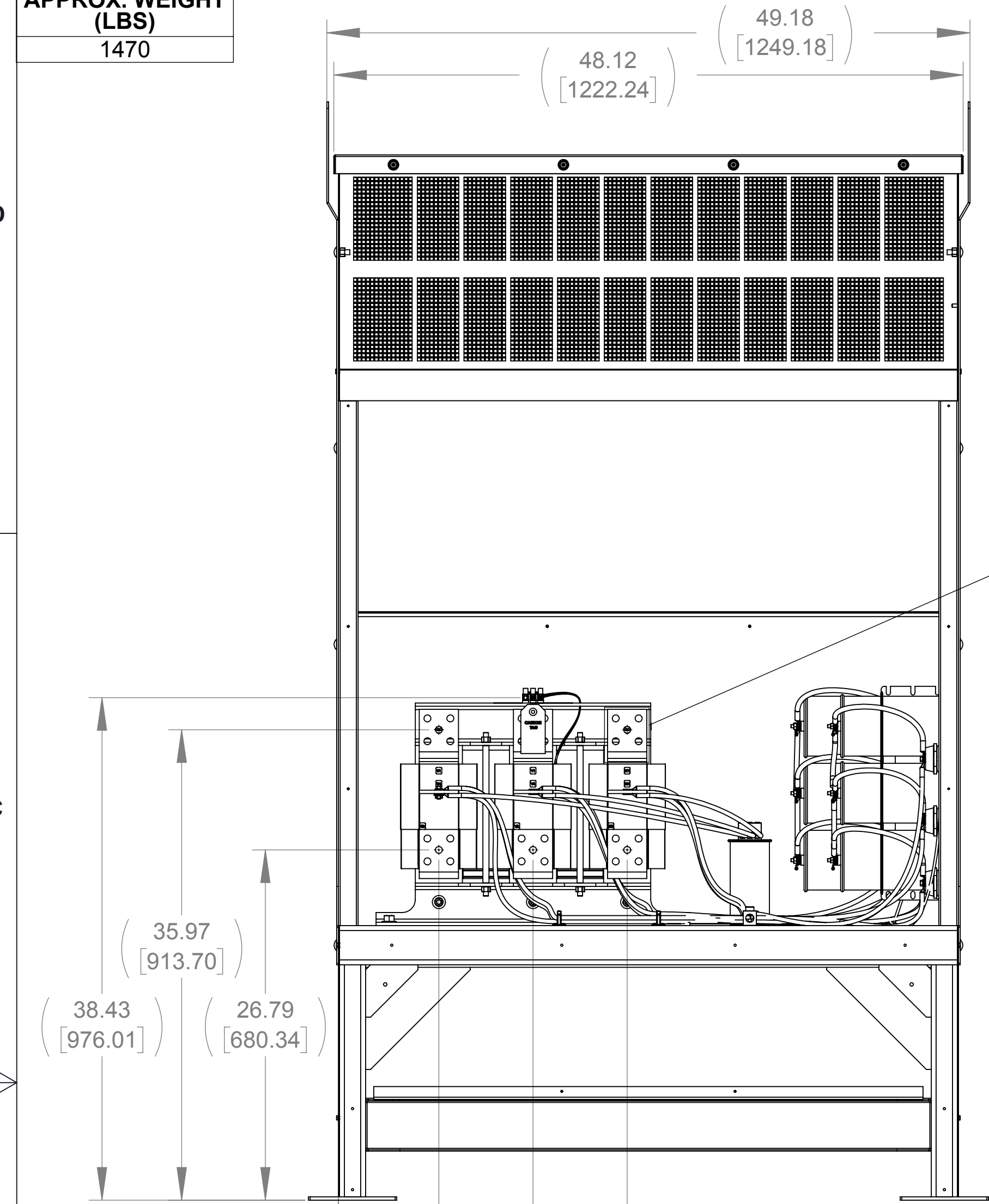
APPROX. WEIGHT  
(LBS)  
1470

D

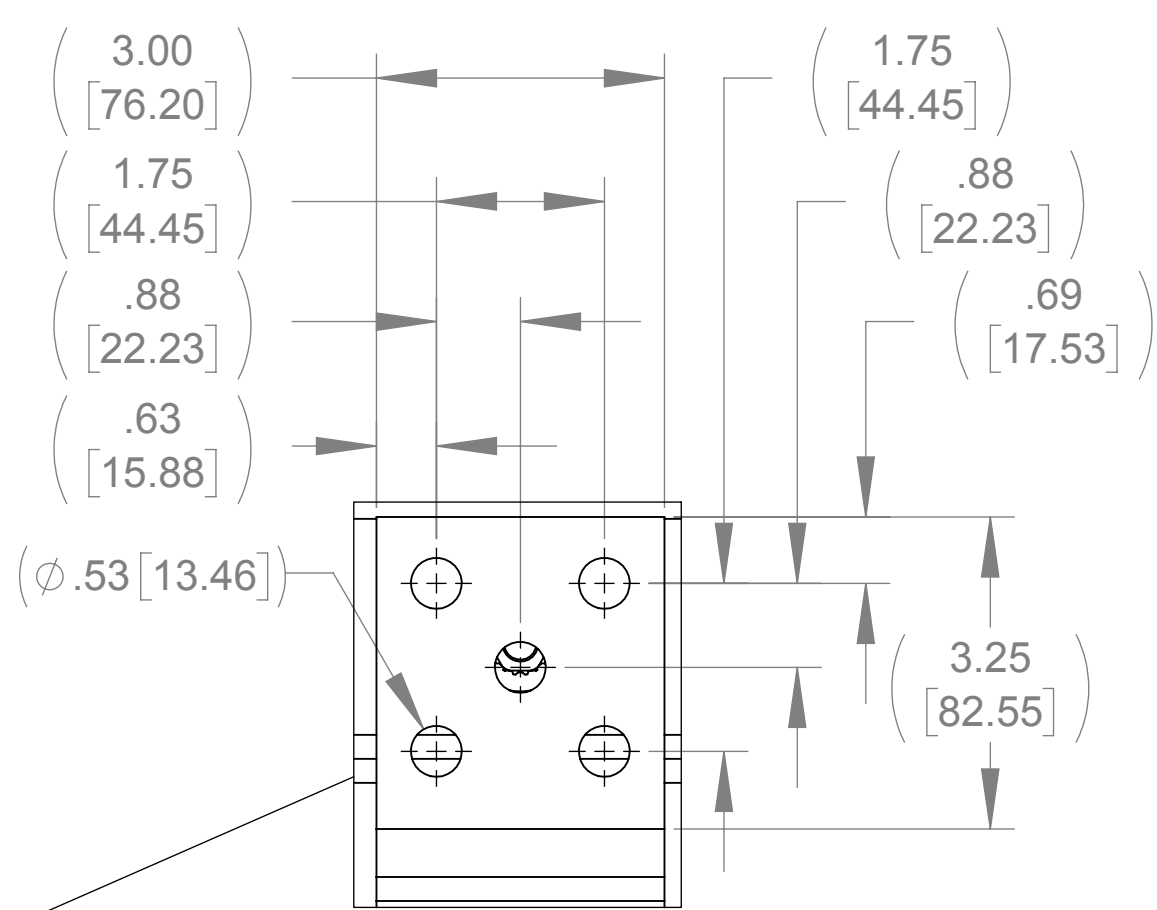
C

B

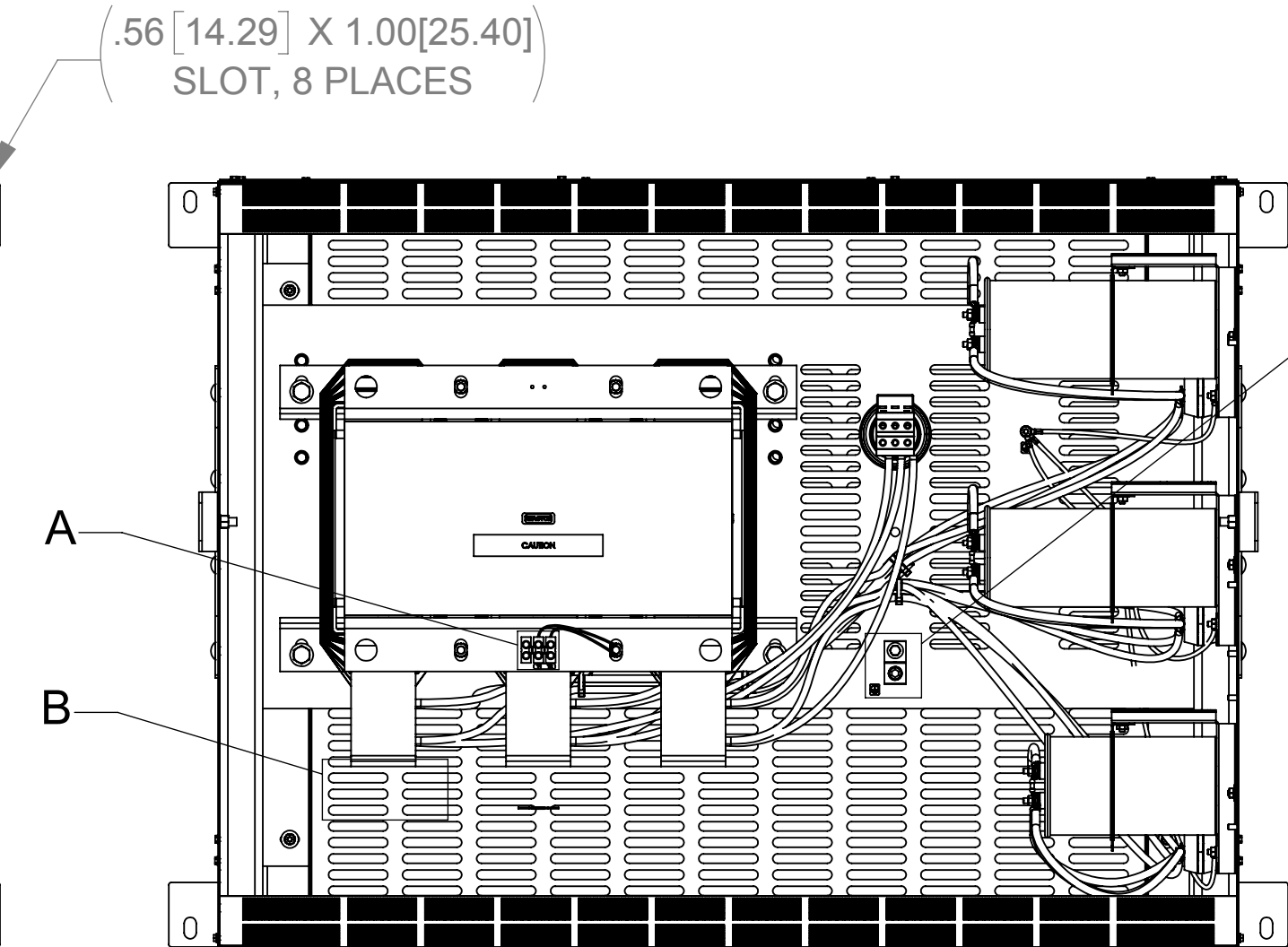
A



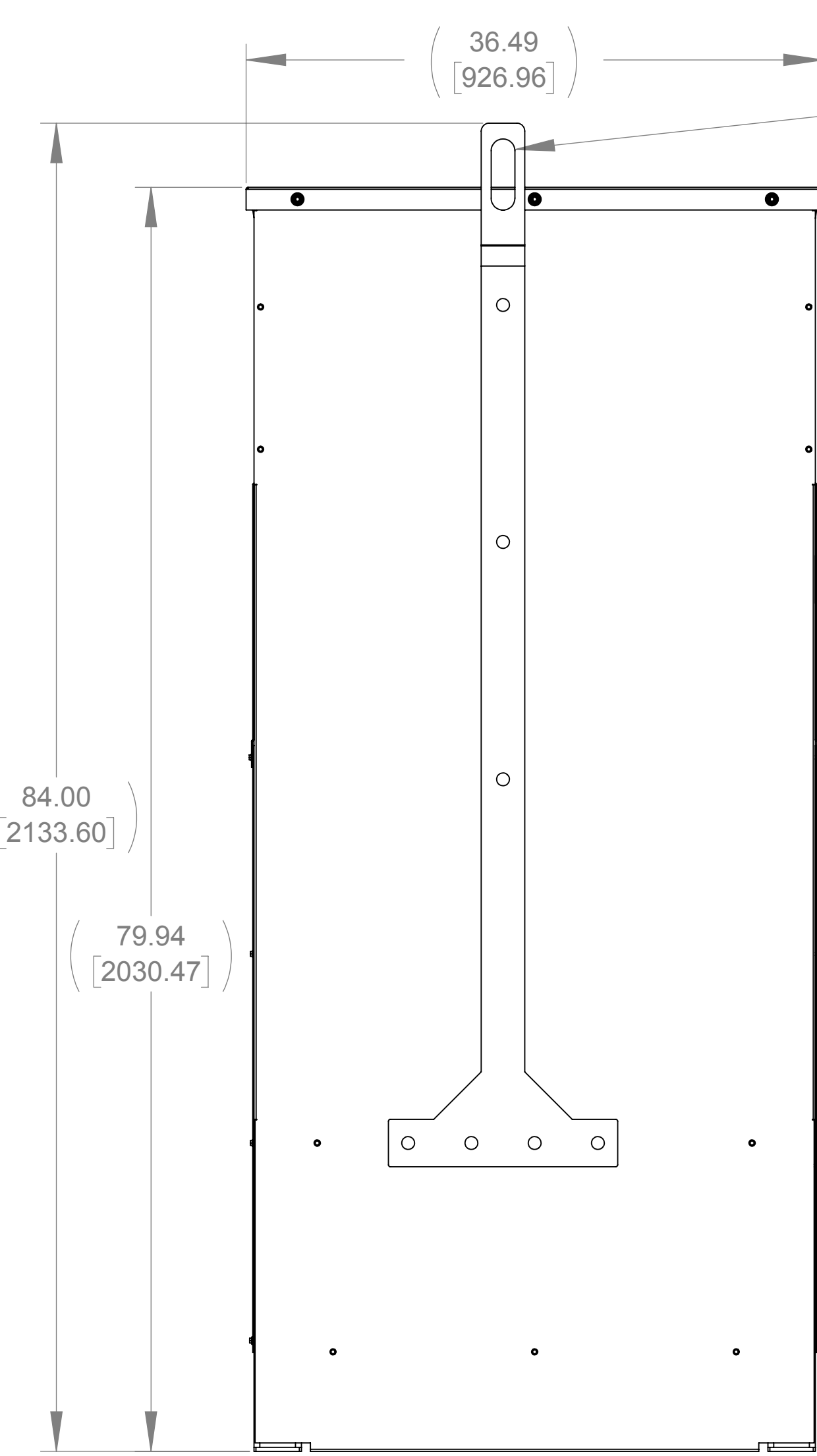
**BOTTOM VIEW  
(PANELS REMOVED)**



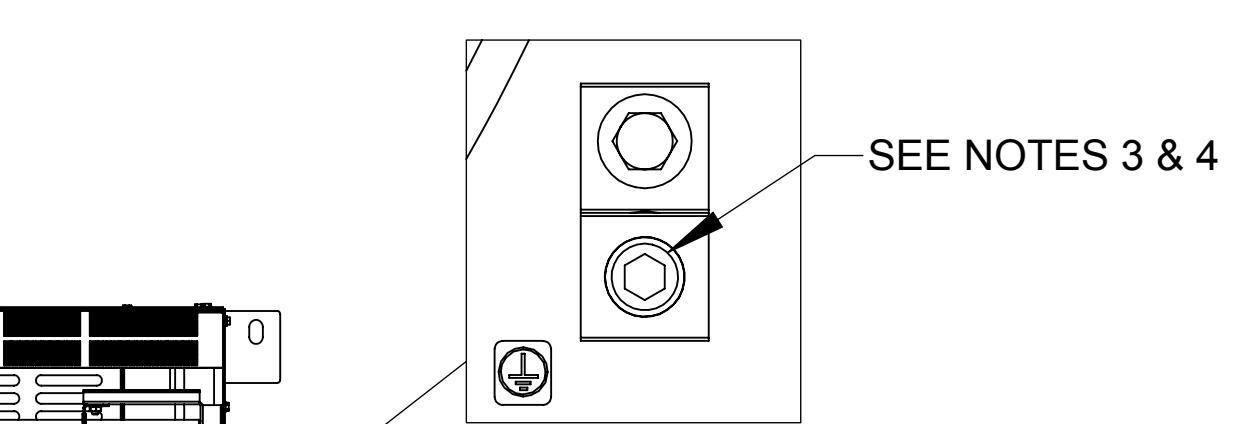
**LUG VIEW  
(6 PLACES)**



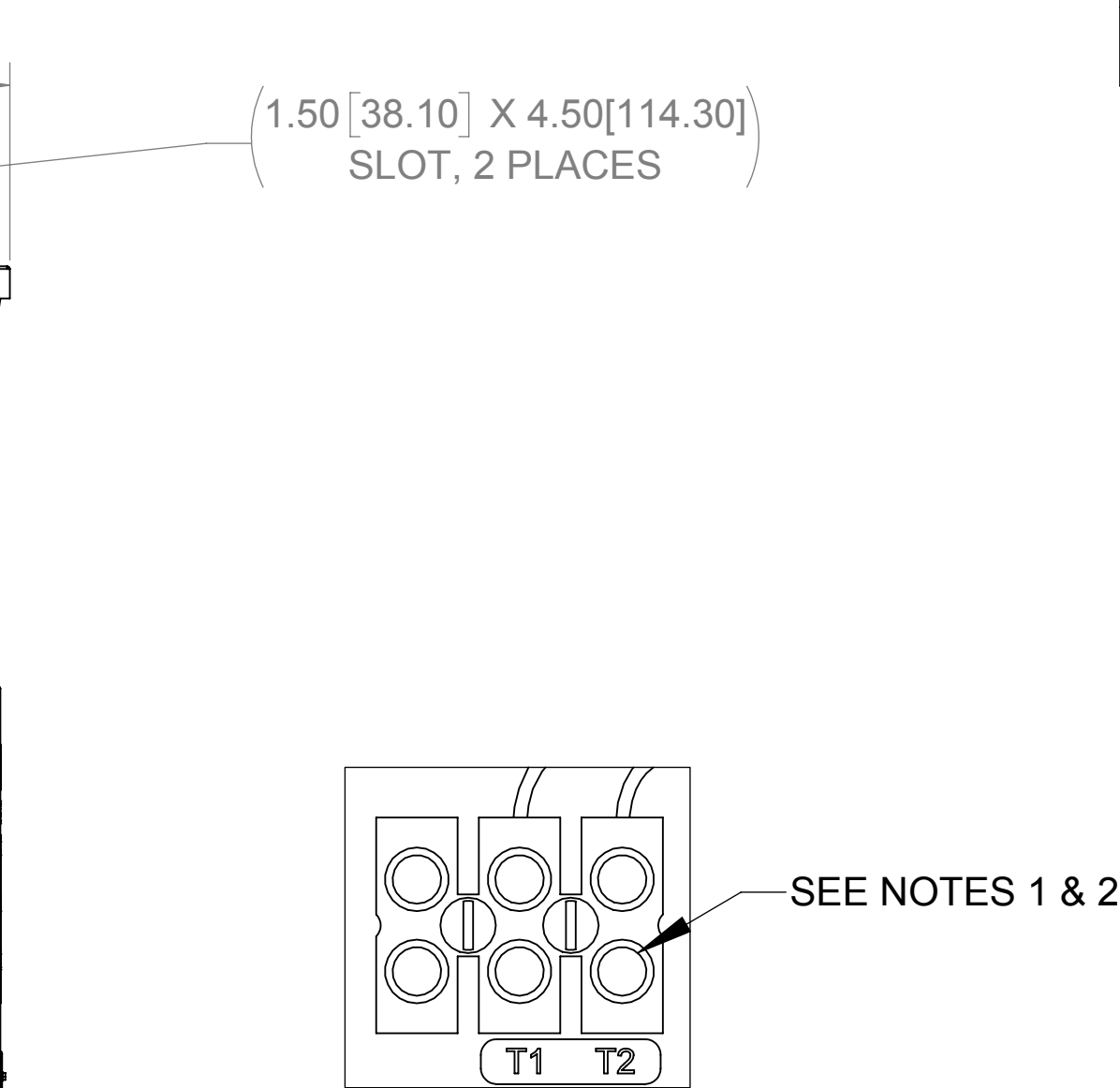
**TOP VIEW  
(PANELS REMOVED)**



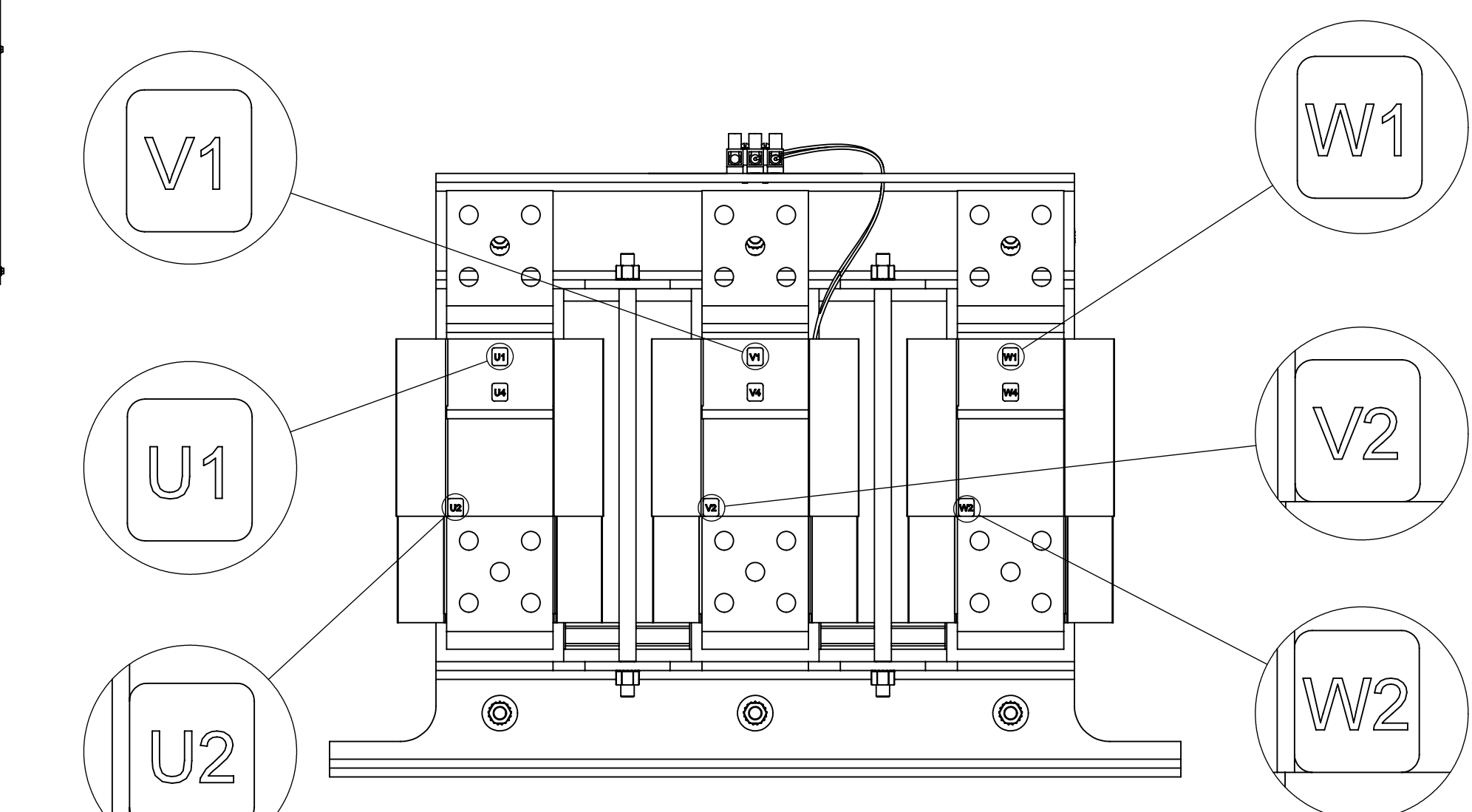
**SIDE VIEW**



**CUSTOMER CONNECTION  
DETAIL VIEW (GROUND)**

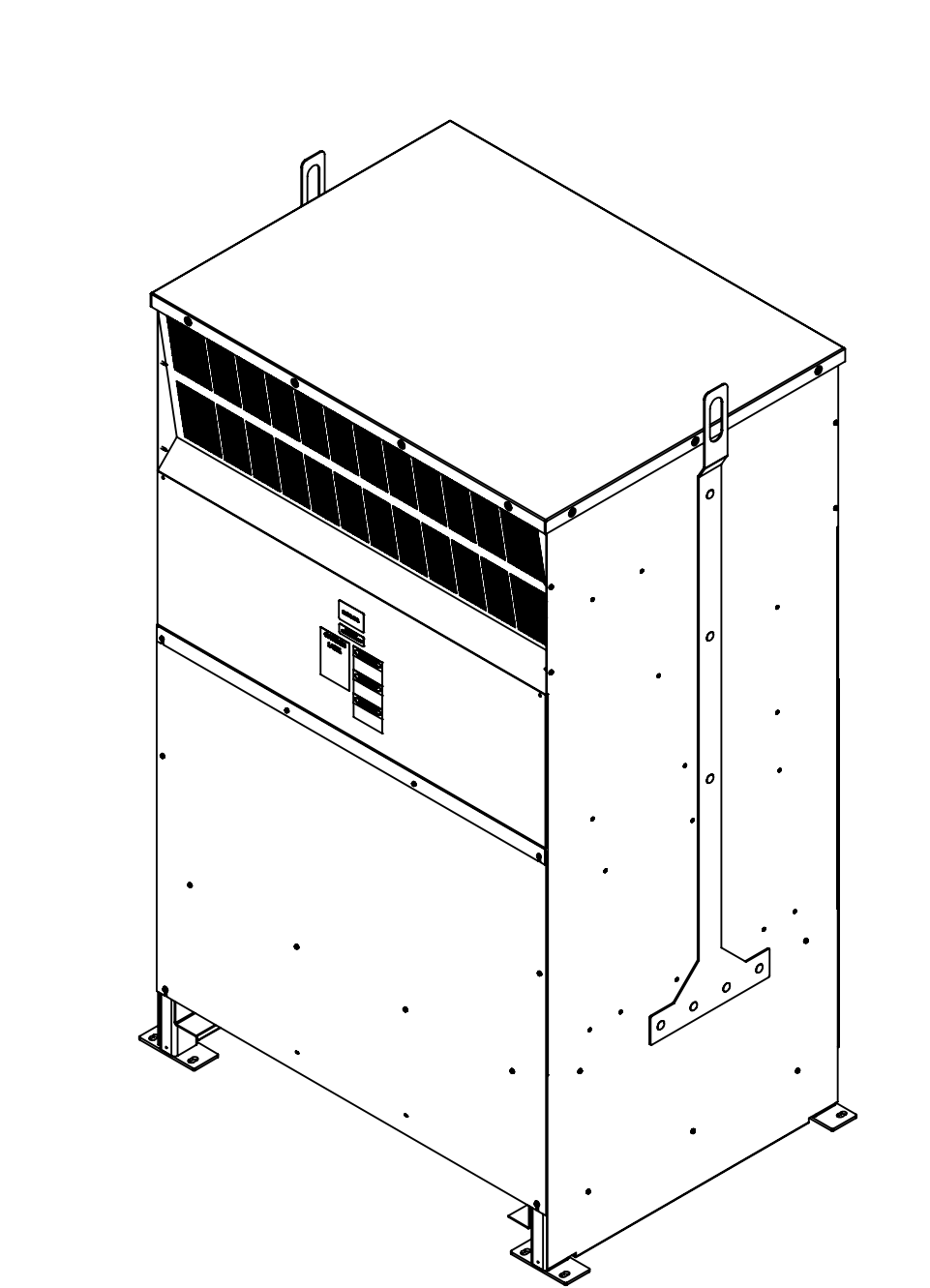


**DETAIL A  
CUSTOMER CONNECTION  
DETAIL VIEW (THERMAL)**



**CUSTOMER CONNECTION  
DETAIL VIEW**

| ECO No | DESCRIPTION | REV BY | DATE |
|--------|-------------|--------|------|
|        |             |        |      |



**NOTES:**

1. TIGHTEN TERMINAL BLOCK SCREWS TO 16 IN/LBS. TORQUE.
2. TERMINAL WIRE RANGE: 4 - 14 AWG
3. TERMINAL WIRE RANGE: 6 AWG - 250 MCM
4. TIGHTEN TERMINAL BLOCK SCREWS TO 275 IN/LBS. TORQUE.

|   |  |          |  |  |  |
|---|--|----------|--|--|--|
| THE COMPONENT, PART OR ASSEMBLY DESCRIBED IN THIS DOCUMENT MUST COMPLY WITH THE EU (EUROPEAN UNION) DIRECTIVE RoHS2 |  | MATERIAL |  | CONFIDENTIAL AND PROPRIETARY INFORMATION<br>THIS DOCUMENT CONTAINS CONFIDENTIAL AND PROPRIETARY INFORMATION OF MTE CORPORATION AND MAY NOT BE USED, COPIED OR DISCLOSED TO OTHERS EXCEPT WITH THE AUTHORIZED WRITTEN PERMISSION OF MTE CORPORATION |  |
| CONTAINS <0.1% OF ANY SVHC BY WEIGHT PER REACH REGULATION   |  |          |  | DESCRIPTION  |  |
| UNLESS OTHERWISE SPECIFIED DIMENSIONS ARE IN INCHES [MM] TOLERANCES ARE:  |  |          |  | SWG 720A 600V 2-8kHz<br>FILTER NEMA 1/2  |  |
| ANGLES: ± 1 °   |  |          |  | SIZE   |  |
| 1 PLACE .X: ± .1 [2.5]  |  |          |  | D  |  |
| 2 PLACE .XX: ± .03 [0.76]   |  |          |  | DWG No.  |  |
| 3 PLACE .XXX: ± .010 [0.254]  |  |          |  | CD SWGG0720E   |  |
|   |  |          |  | REV  |  |
|   |  |          |  | 00   |  |
|   |  |          |  | SCALE  |  |
|   |  |          |  | 1:8  |  |
|   |  |          |  | SHEET 1 OF 1   |  |



N83 W13330 Leon Road  
Menomonee Falls, WI 53051 USA  
800.455.4683  
262.253.8200

|          |          |
|----------|----------|
| DRAWN    | DATE     |
| MN       | 04/11/16 |
| CHECKED  | DATE     |
| RH       | 04/11/16 |
| APPROVED | DATE     |
| TL       | 10/09/18 |