

WEIGHT (LBS)
395

ECO No	DESCRIPTION	REV BY	DATE
M8994	CHANGED ALL WARNING, CAUTION, DANGER LABELS TO SAMPLIFIED	KV	02/13/14

D

C

B

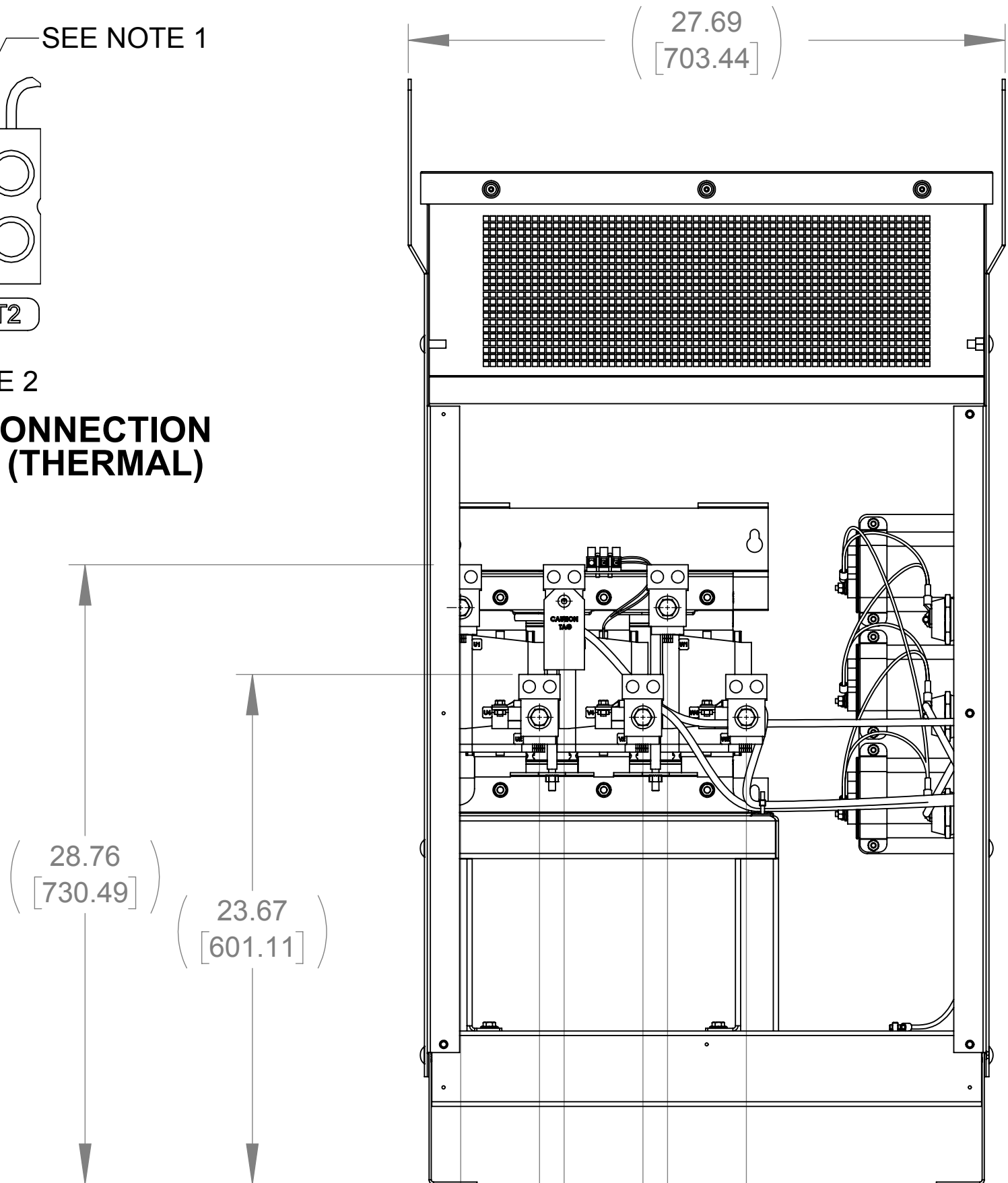
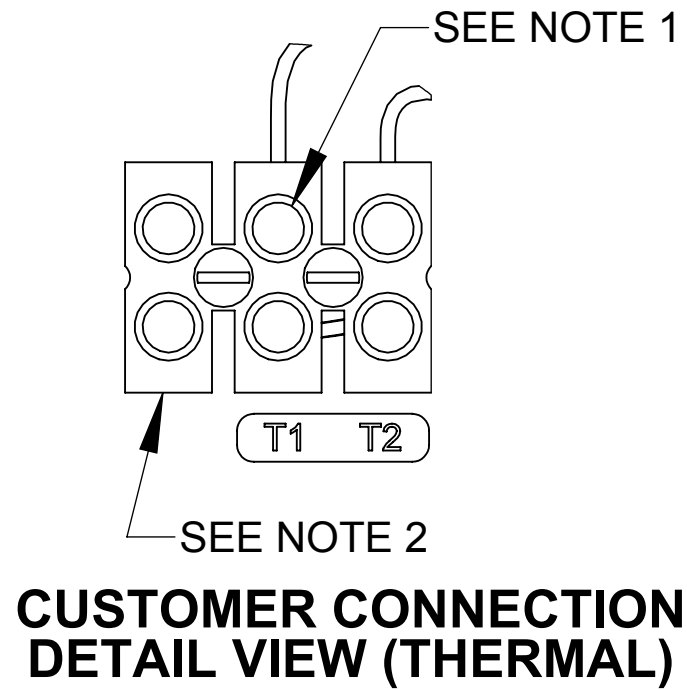
A

D

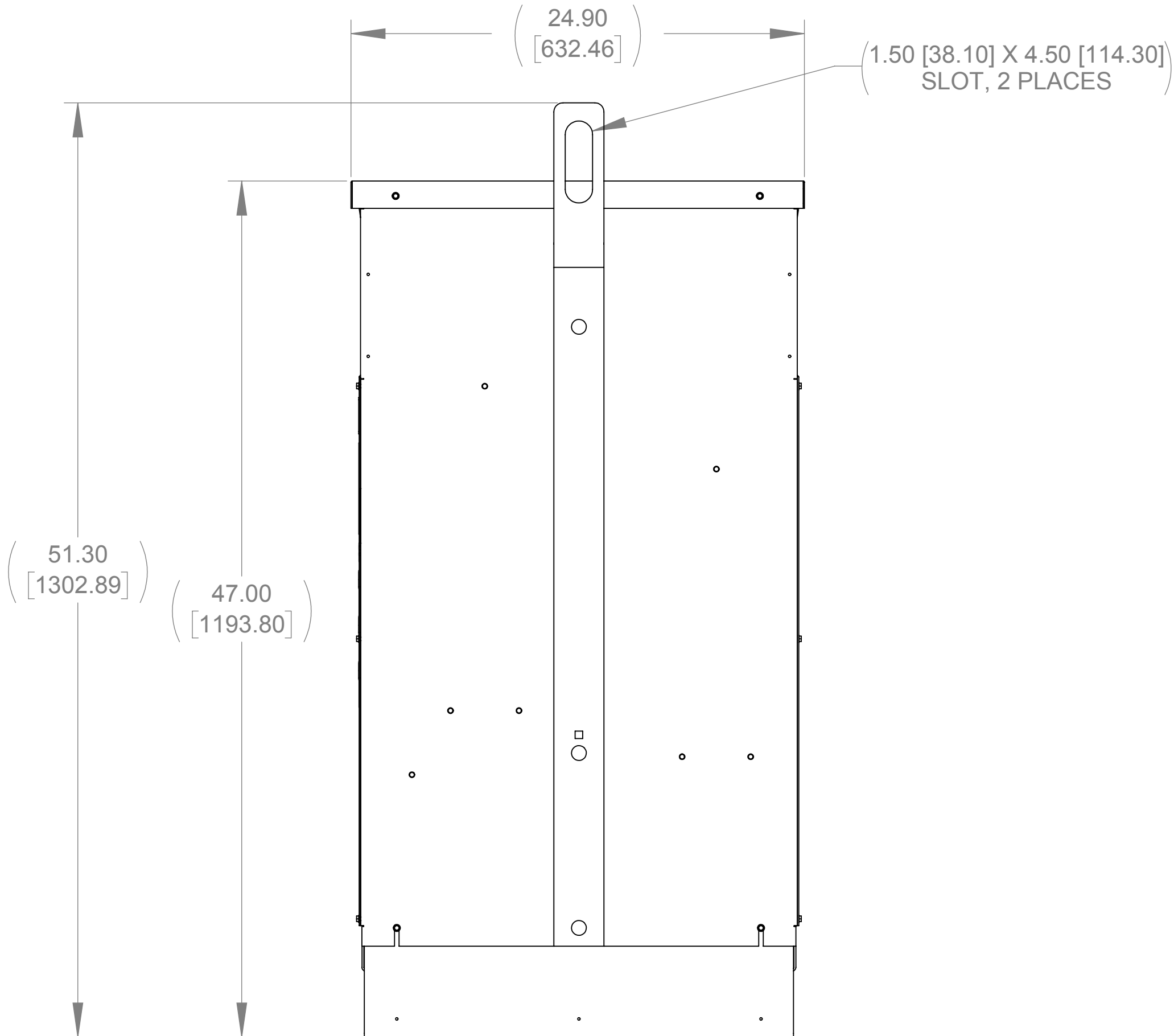
C

B

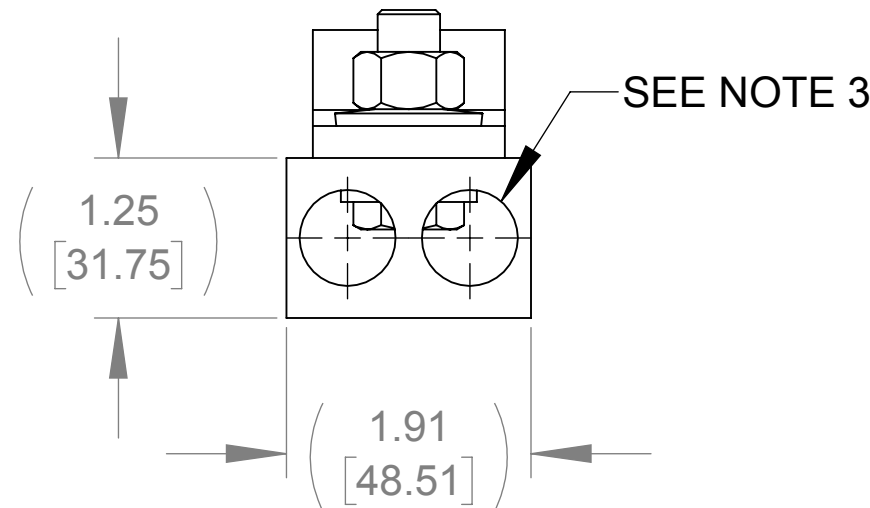
A



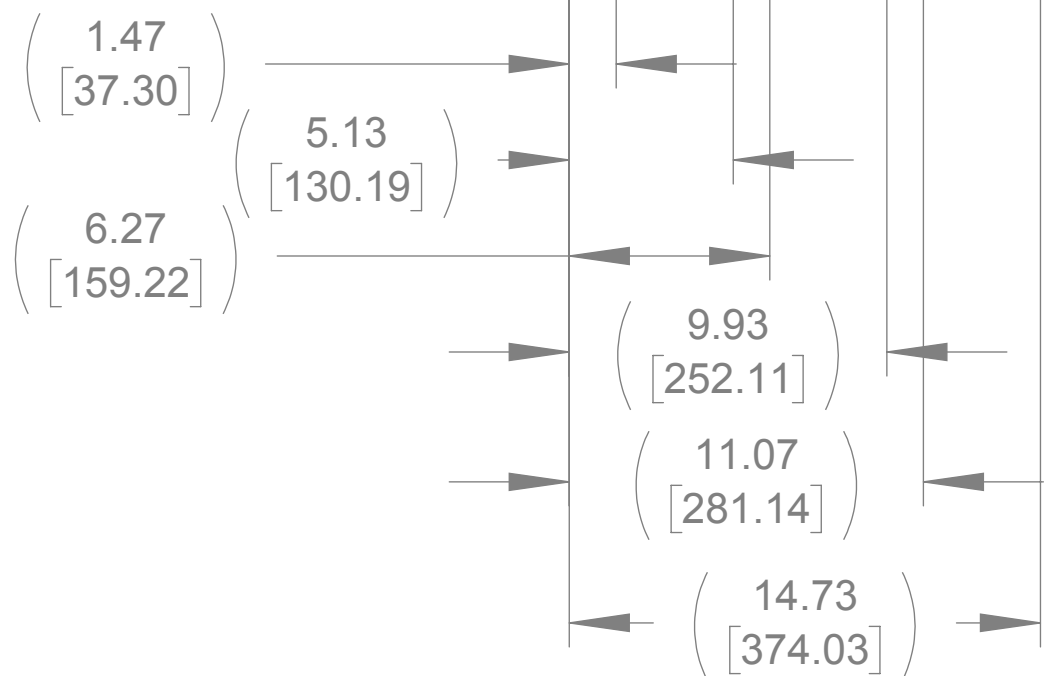
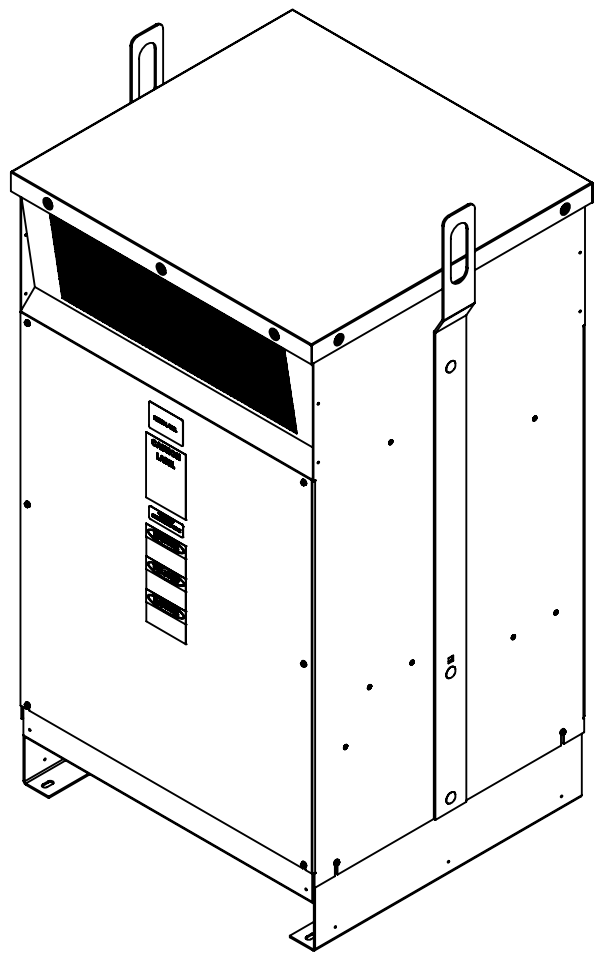
**FRONT VIEW
(FRONT PANEL REMOVED)**



RIGHT SIDE VIEW

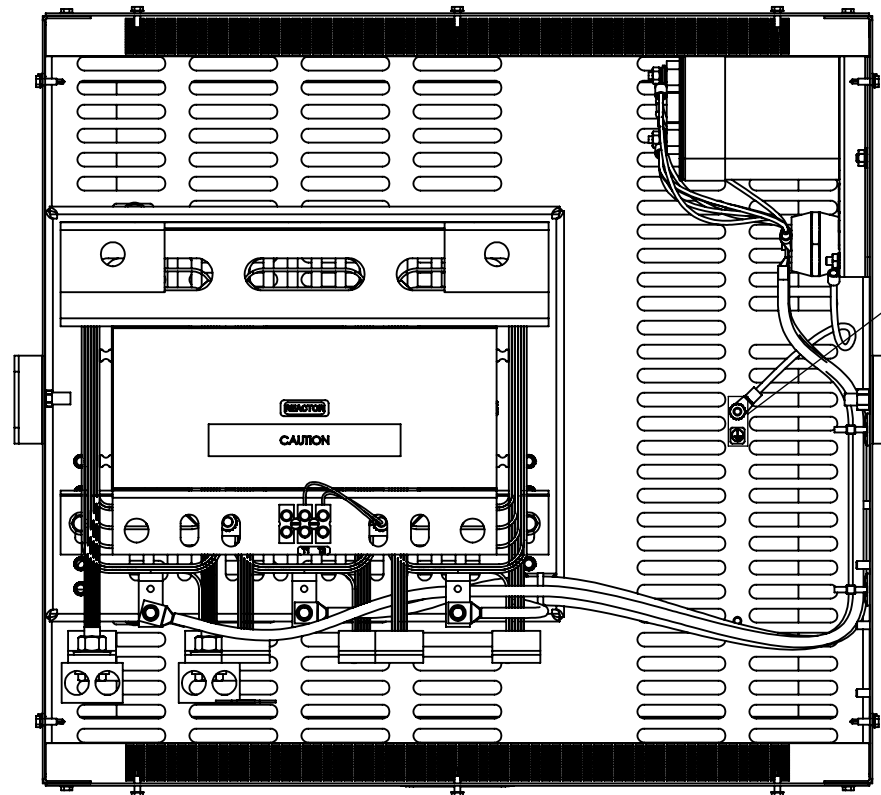


**LUG VIEW
(TYP 6 PLACES
U1, V1, W1
U2, V2, W2 TERMINALS)**



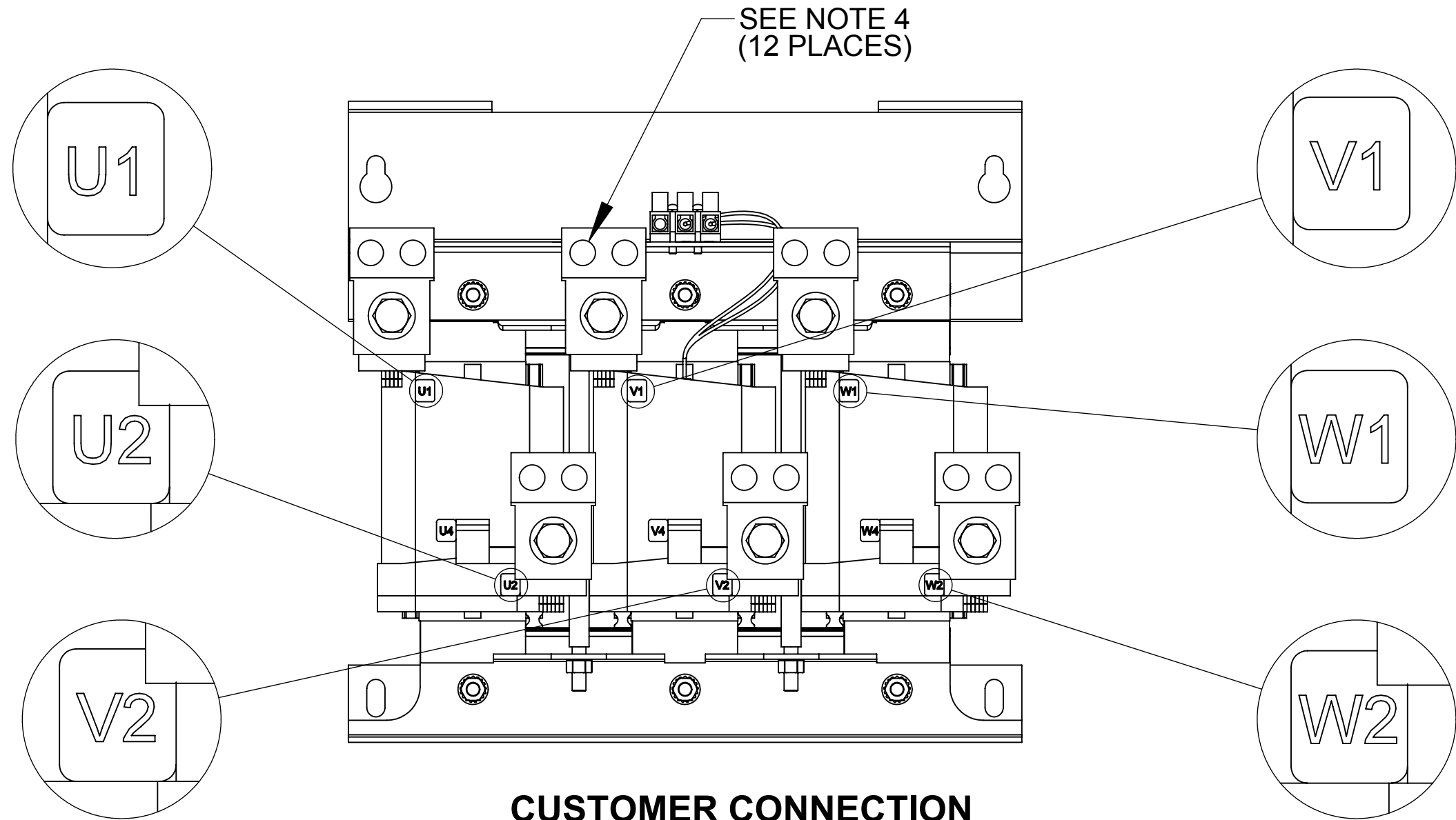
BOTTOM VIEW

.41 [10.41] X .88 [22.35]
SLOT, 4 PLACES



**TOP VIEW
(TOP HAT REMOVED)**

1/4-20 GROUND STUD



**CUSTOMER CONNECTION
DETAIL VIEW**

- NOTES:**
1. TIGHTEN TERMINAL BLOCK SCREWS TO 16 IN/LBS. TORQUE, MAX.
 2. TERMINAL WIRE SIZE: 4-14 AWG.
 3. TERMINAL WIRE SIZE: 6 AWG - 350 MCM..
 4. TIGHTEN TERMINAL BLOCK SCREWS TO 200 IN/LBS. TORQUE, MAX.

THE COMPONENT, PART OR ASSEMBLY DESCRIBED IN THIS DOCUMENT MUST COMPLY WITH THE EU(EUROPEAN UNION) DIRECTIVE RoHS2		MATERIAL		CONFIDENTIAL AND PROPRIETARY INFORMATION THIS DOCUMENT CONTAINS CONFIDENTIAL AND PROPRIETARY INFORMATION OF MTE CORPORATION AND MAY NOT BE USED, COPIED OR DISCLOSED TO OTHERS EXCEPT WITH THE AUTHORIZED WRITTEN PERMISSION OF MTE CORPORATION			
CONTAINS <0.1% OF ANY SVHC BY WEIGHT PER REACH REGULATION				DESCRIPTION			
<div>UNLESS OTHERWISE SPECIFIED DIMENSIONS ARE IN INCHES [MM] TOLERANCES ARE: ANGLES: ± 1 ° 1 PLACE .X: ± .1 [2.5] 2 PLACE .XX: ± .03 [0.76] 3 PLACE .XXX: ± .010 [0.254]</div>		<div><div><div>DRAWN</div><div>MN</div></div><div><div>CHECKED</div><div>JM</div></div><div><div>APPROVED</div><div>JM</div></div></div> <div><div>DATE</div><div>08/28/13</div></div> <div><div>DATE</div><div>02/13/14</div></div> <div><div>DATE</div><div>02/13/14</div></div>		SWG 250A 380-480V 2-8kHz FILTER NEMA 1/2			
				SIZE	DWG No.	REV	
				D	CD SWGG0250D	02	
				SCALE	1:6	SHEET 1 OF 1	