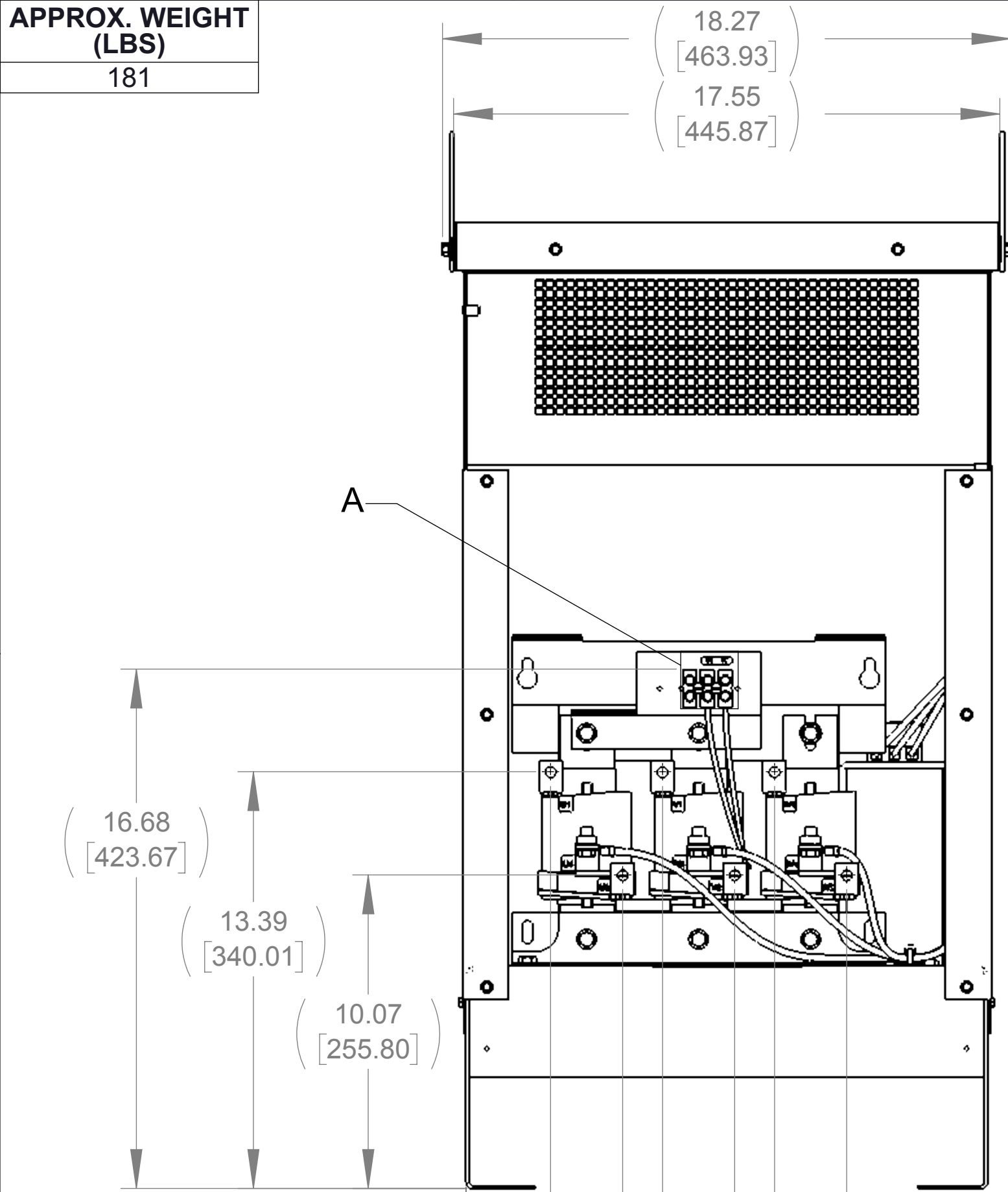
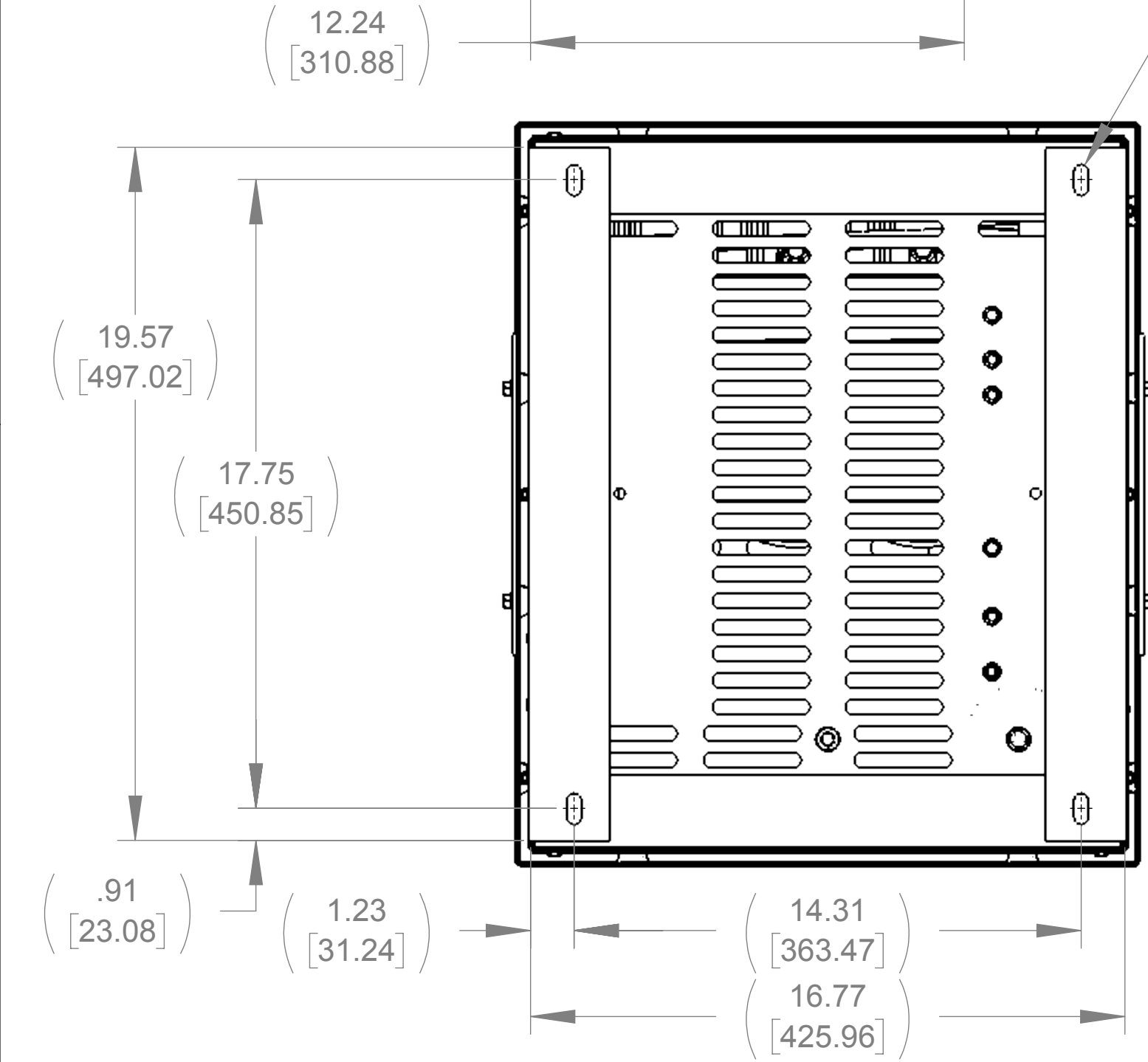


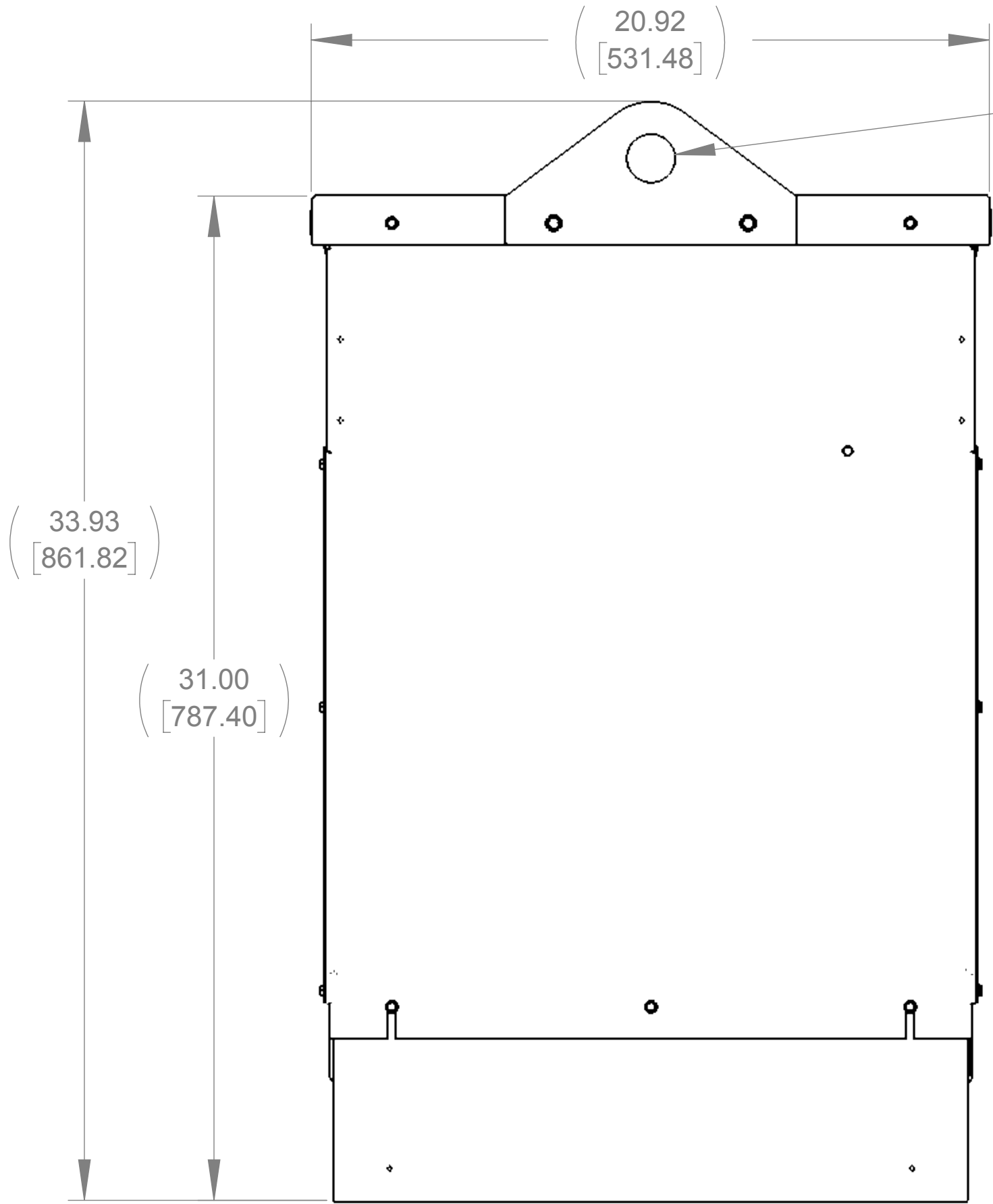
APPROX. WEIGHT
(LBS)
181



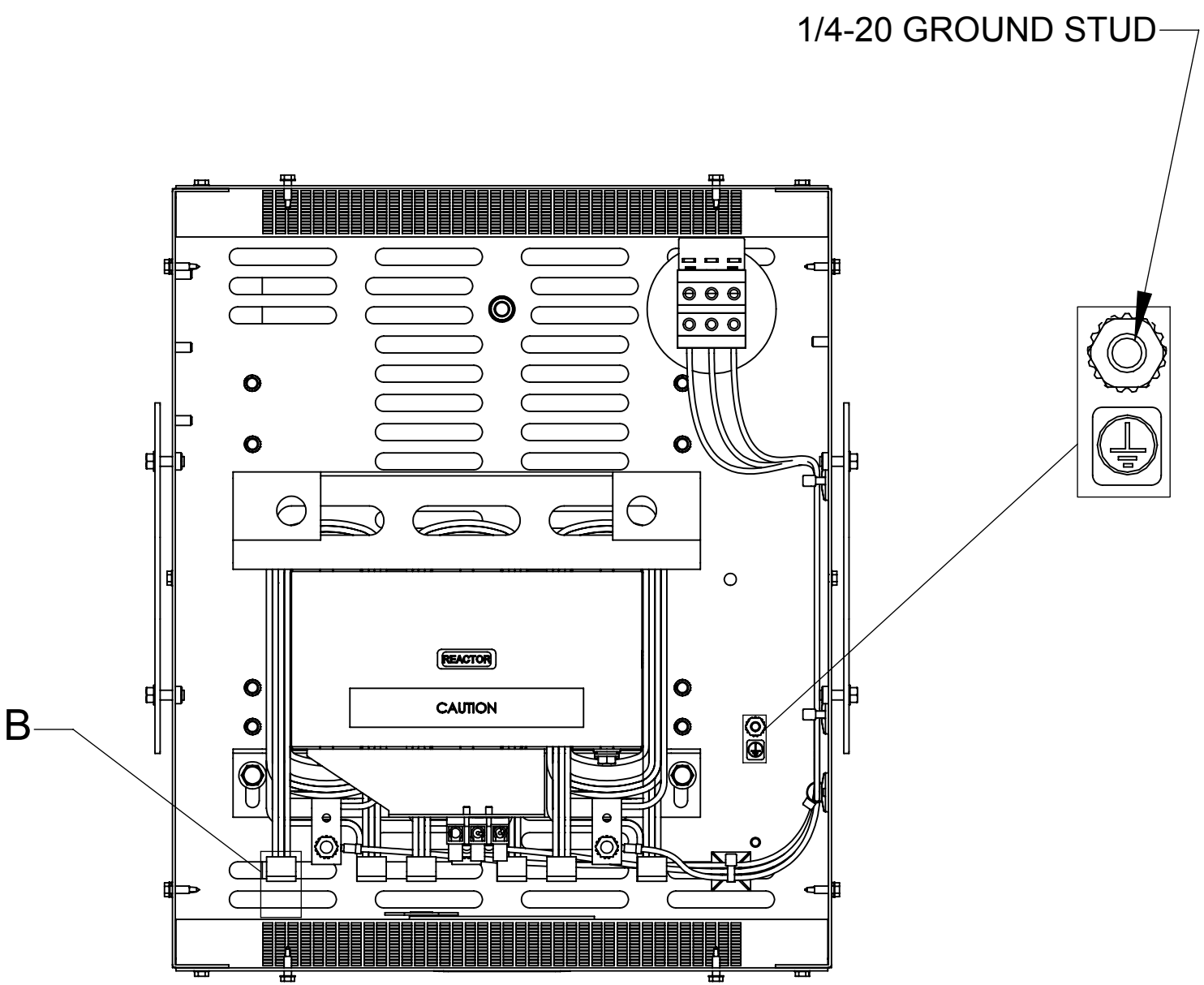
FRONT VIEW
(PANELS REMOVED)



BOTTOM VIEW



SIDE VIEW

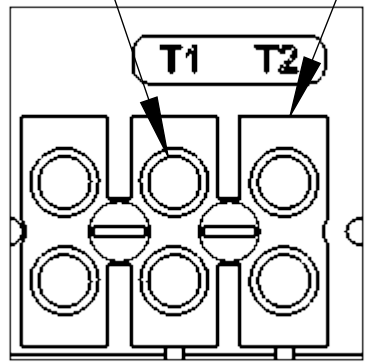


TOP VIEW
(PANELS REMOVED)

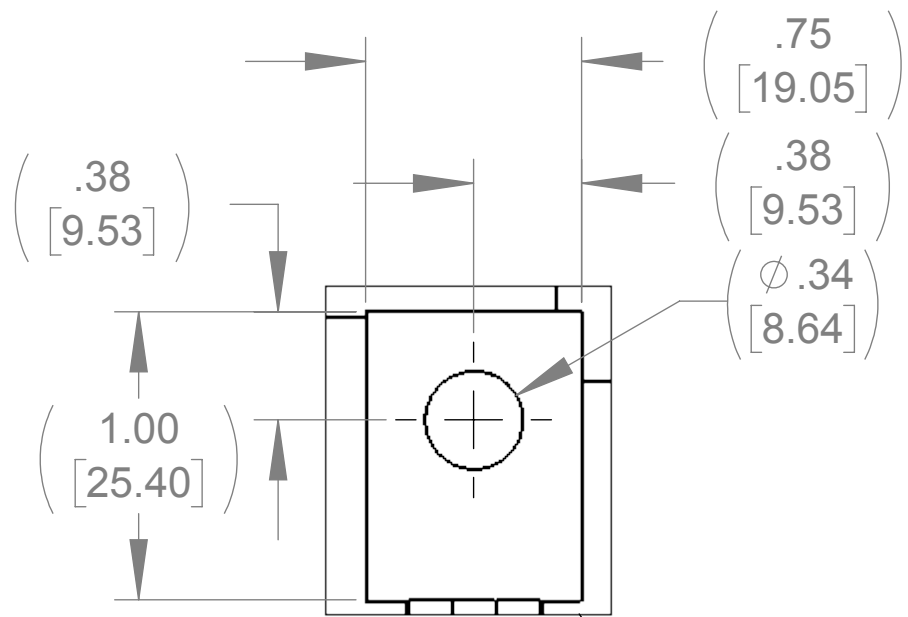
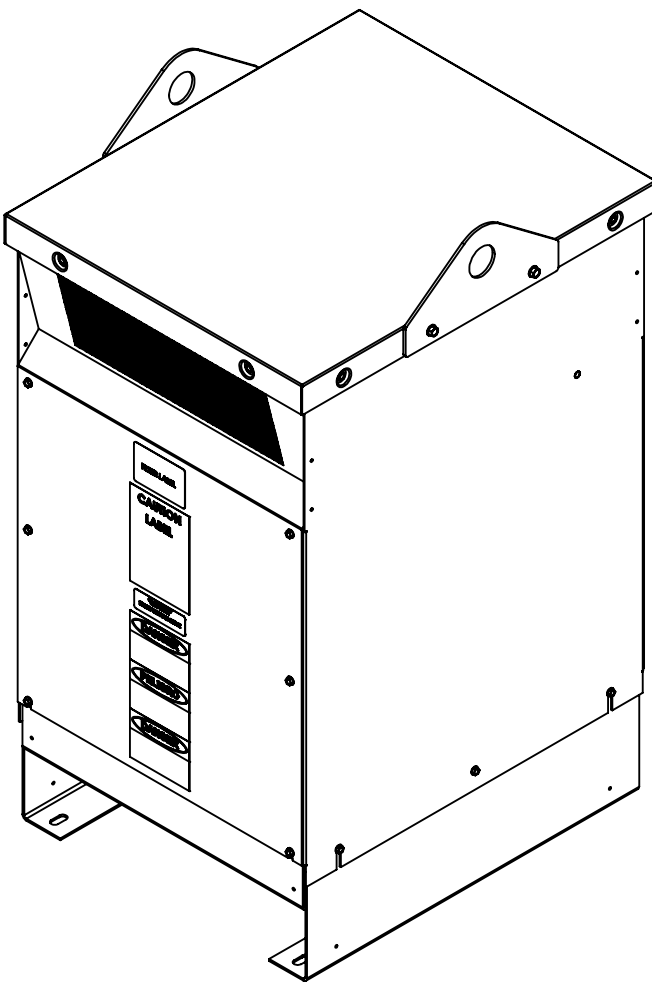
$\varnothing 1.50$ [38.10] THRU
2 PLACES

SEE NOTE 1

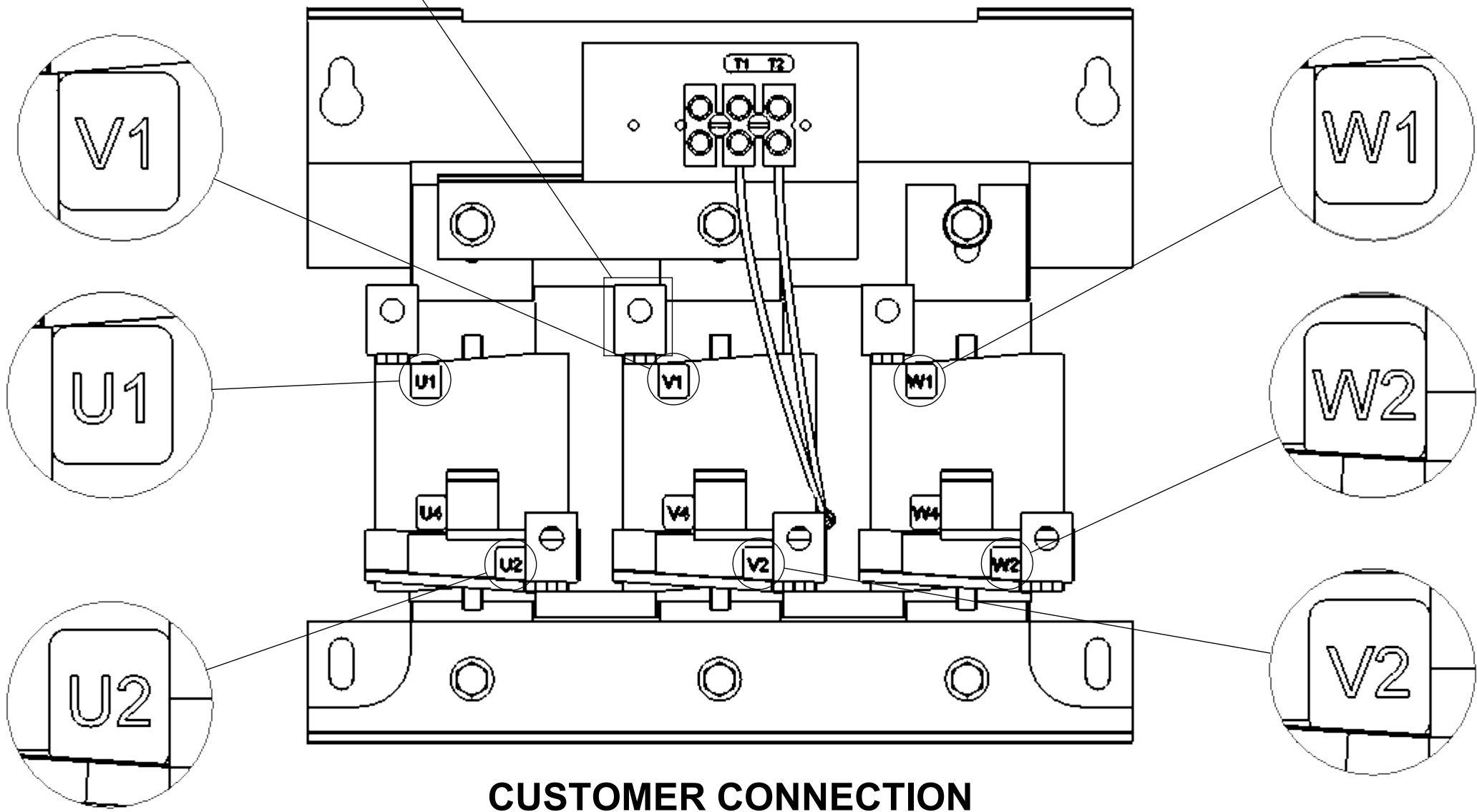
SEE NOTE 2



DETAIL A
CUSTOMER CONNECTION
DETAIL VIEW (THERMAL)




LUG VIEW
(6 PLACES)



CUSTOMER CONNECTION
DETAIL VIEW

NOTES:

1. TIGHTEN TERMINAL BLOCK SCREWS TO 16 IN/LBS. TORQUE.
2. TERMINAL WIRE SIZE: 4-14 AWG.

THE COMPONENT, PART OR ASSEMBLY DESCRIBED IN THIS DOCUMENT MUST COMPLY WITH THE EU(EUROPEAN UNION) DIRECTIVE RoHS2		MATERIAL		CONFIDENTIAL AND PROPRIETARY INFORMATION THIS DOCUMENT CONTAINS CONFIDENTIAL AND PROPRIETARY INFORMATION OF MTE CORPORATION AND MAY NOT BE USED, COPIED OR DISCLOSED TO OTHERS EXCEPT WITH THE AUTHORIZED WRITTEN PERMISSION OF MTE CORPORATION		
CONTAINS <0.1% OF ANY SVHC BY WEIGHT PER REACH REGULATION				DESCRIPTION		
UNLESS OTHERWISE SPECIFIED DIMENSIONS ARE IN INCHES [MM] TOLERANCES ARE: ANGLES: ± 1 ° 1 PLACE .X: ± .1 [2.5] 2 PLACE .XX: ± .03 [0.76] 3 PLACE .XXX: ± .010 [0.254]		 N83 W13330 Leon Road Menomonee Falls, WI 53051 USA 800.455.4683 262.253.8200		SWG 110A 600V 2-8kHz FILTER, NEMA 1/2 ENCL.		
		DRAWN MN	DATE 08/08/18	SIZE D	DWG No. CD SWGG0110E	REV 00
		CHECKED MN	DATE 08/23/18	SCALE 1:4	SHEET 1 OF 1	
		APPROVED TL	DATE 10/10/18			