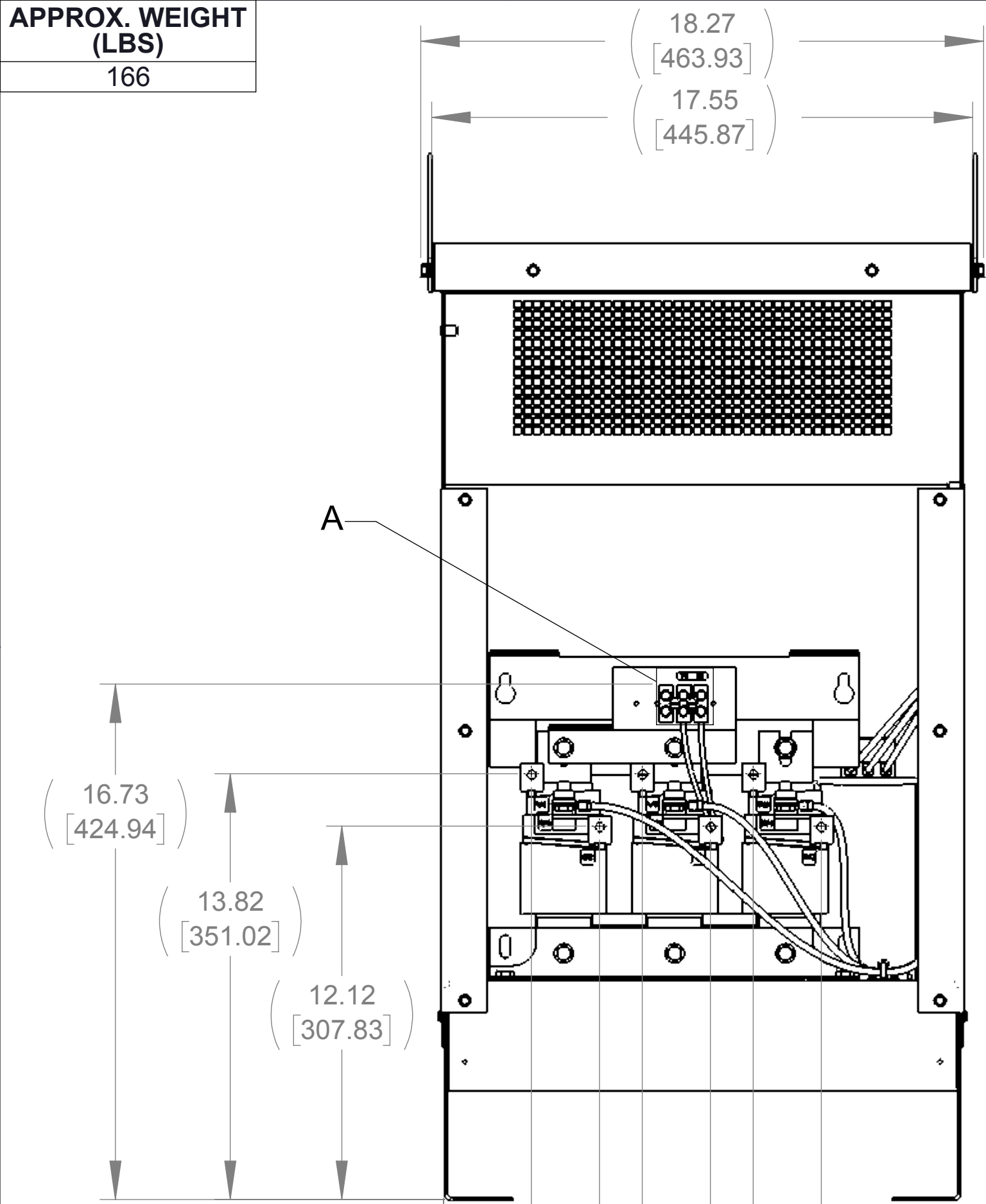
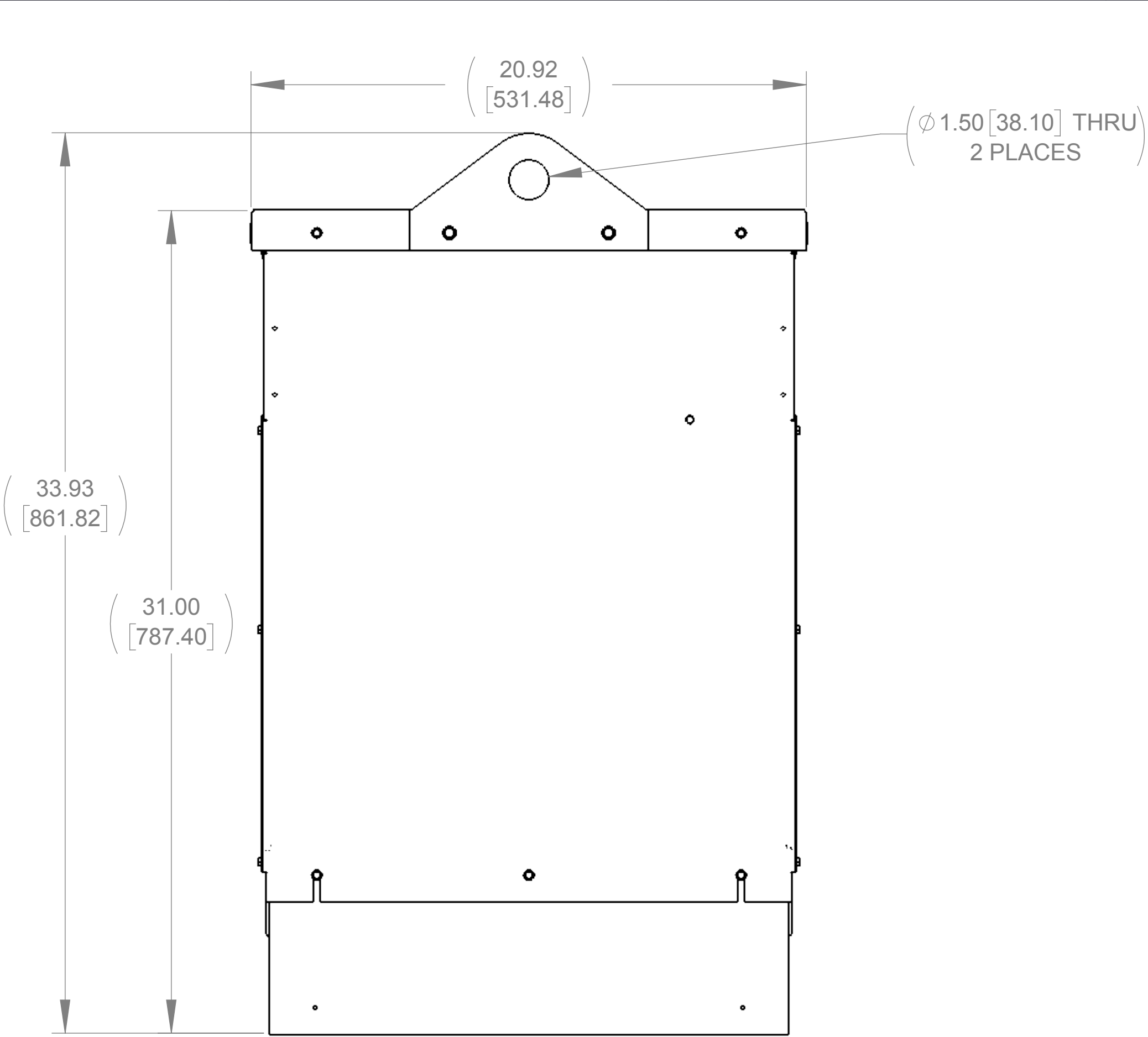


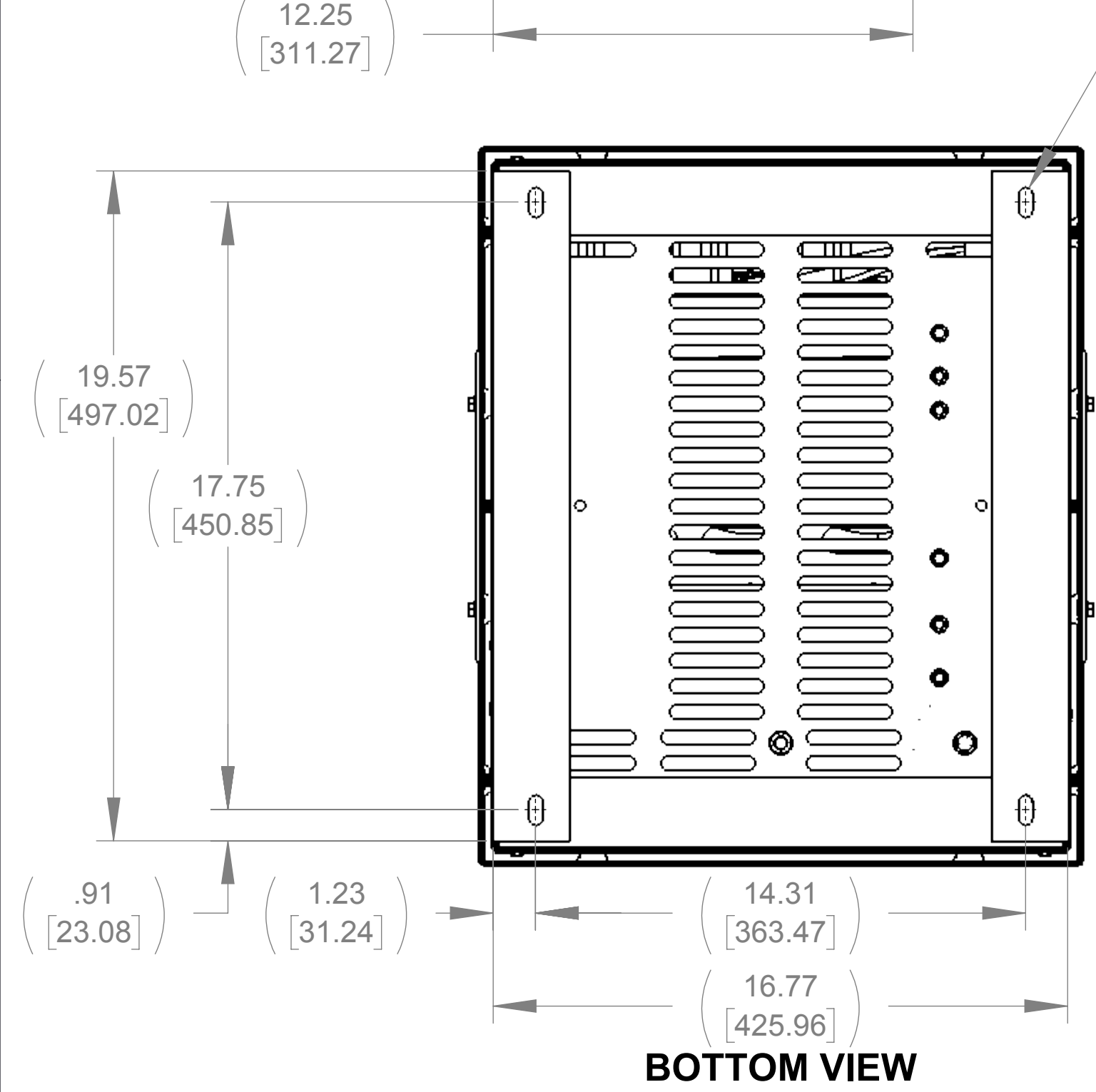
APPROX. WEIGHT
(LBS)
166



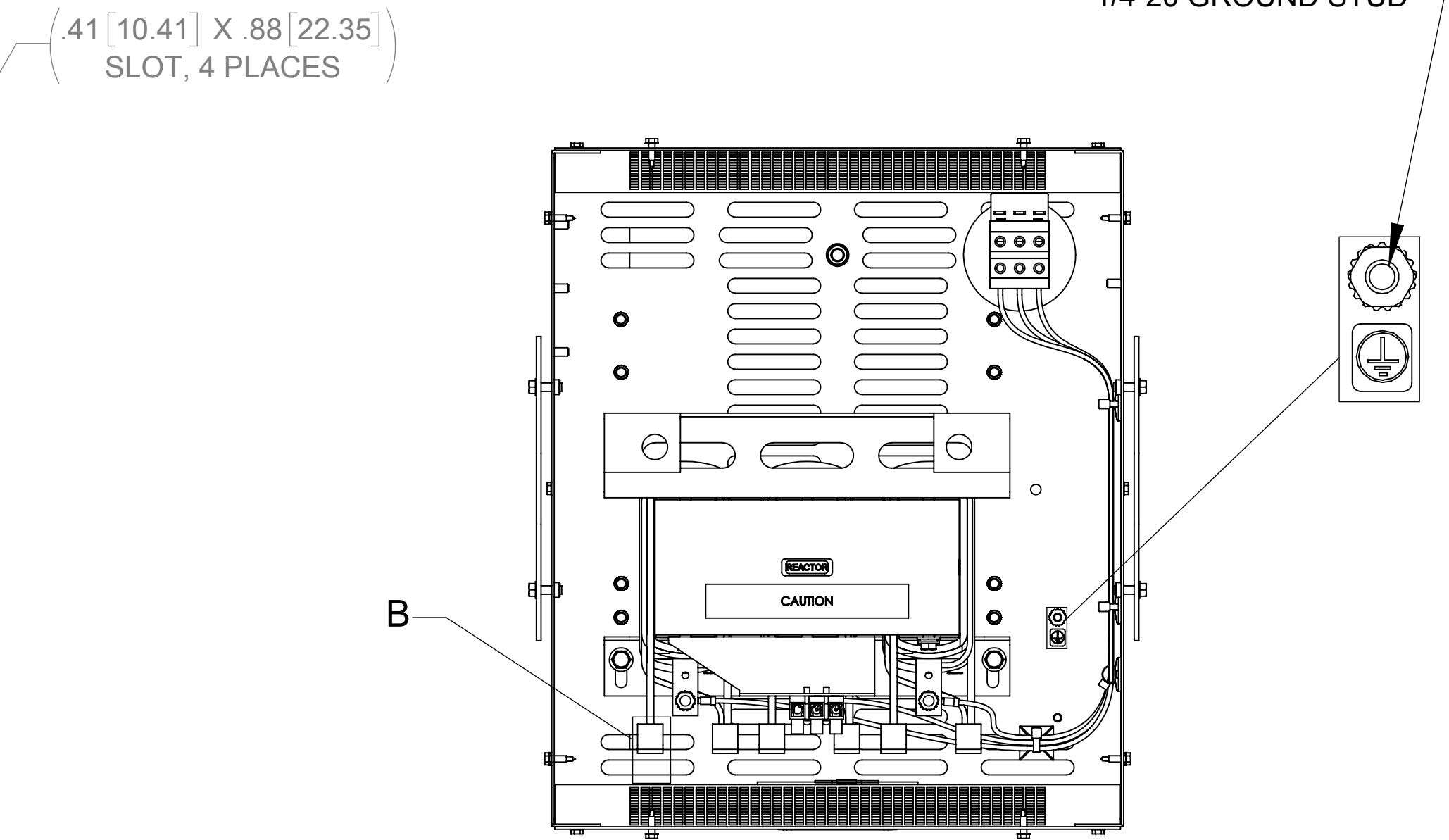
FRONT VIEW
(PANELS REMOVED)



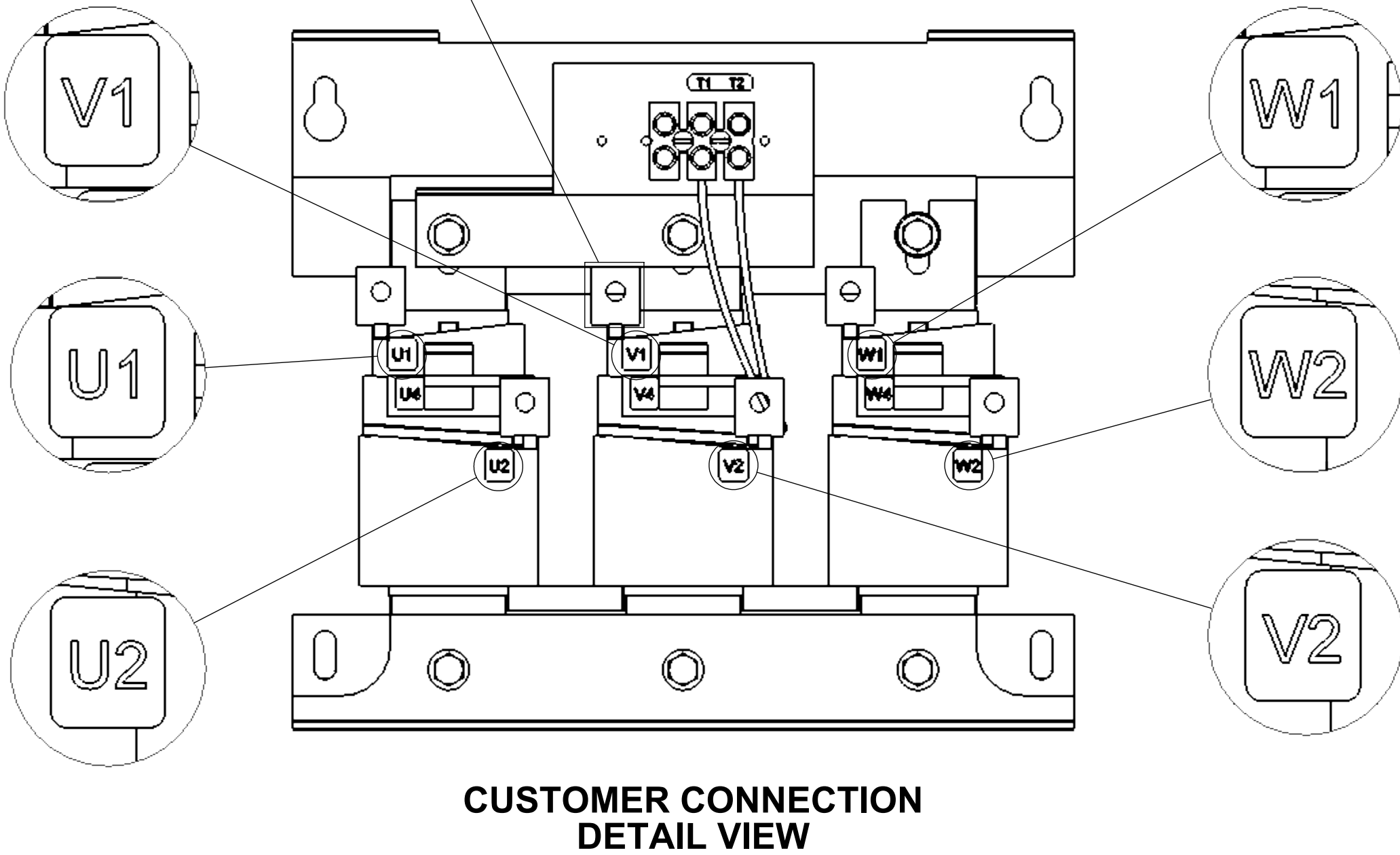
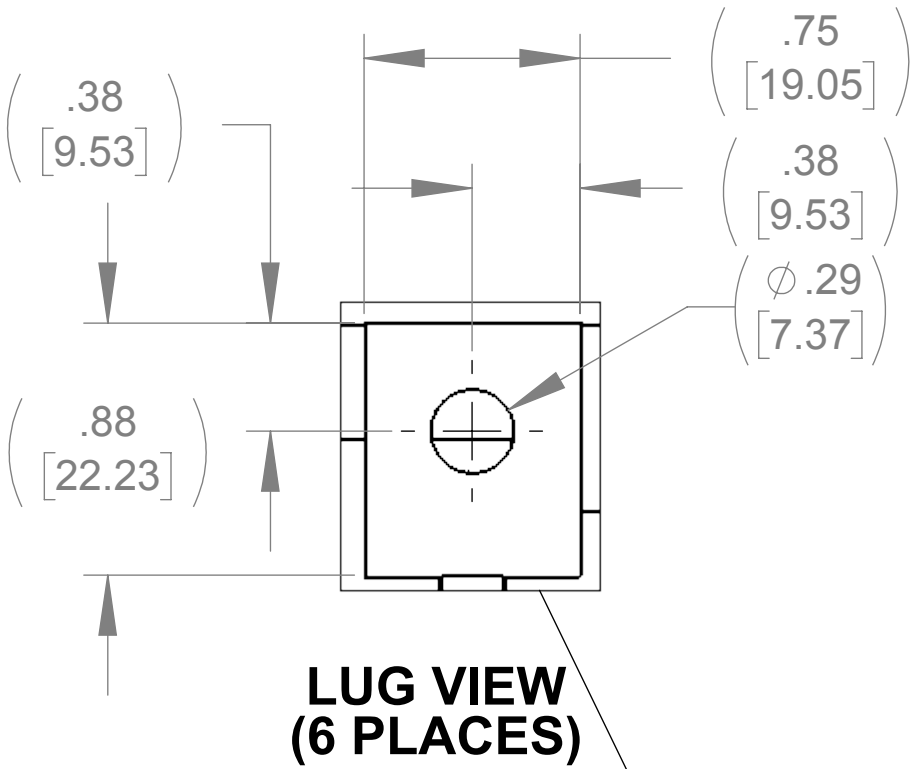
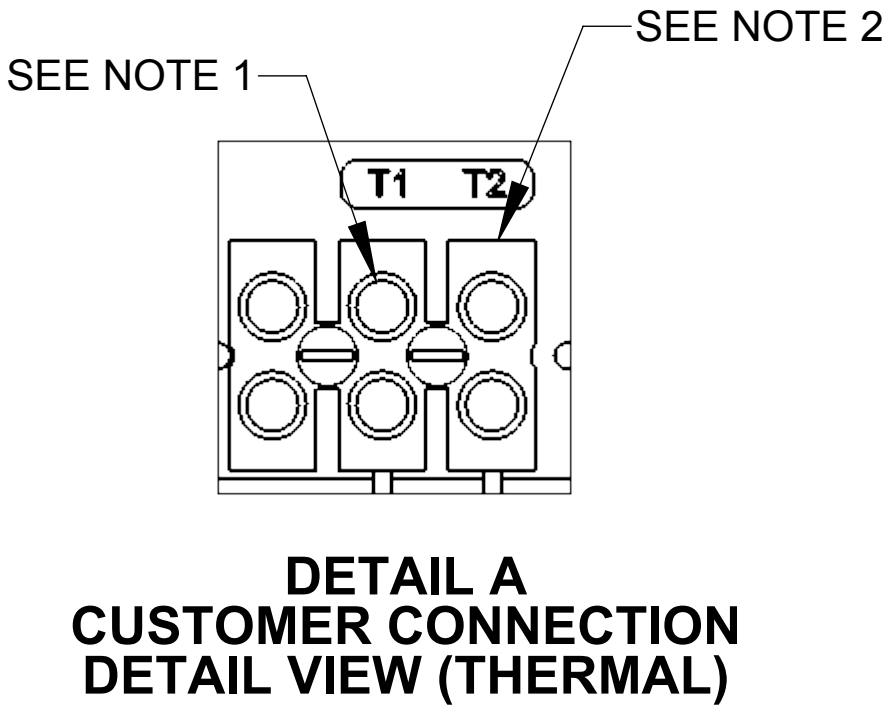
SIDE VIEW



BOTTOM VIEW




TOP VIEW
(PANELS REMOVED)



CUSTOMER CONNECTION
DETAIL VIEW

NOTES:

1. TIGHTEN TERMINAL BLOCK SCREWS TO 16 IN/LBS. TORQUE.
2. TERMINAL WIRE SIZE: 4-14 AWG.

THE COMPONENT, PART OR ASSEMBLY DESCRIBED IN THIS DOCUMENT MUST COMPLY WITH THE EU(EUROPEAN UNION) DIRECTIVE RoHS2		MATERIAL		CONFIDENTIAL AND PROPRIETARY INFORMATION THIS DOCUMENT CONTAINS CONFIDENTIAL AND PROPRIETARY INFORMATION OF MTE CORPORATION AND MAY NOT BE USED, COPIED OR DISCLOSED TO OTHERS EXCEPT WITH THE AUTHORIZED WRITTEN PERMISSION OF MTE CORPORATION			
CONTAINS <0.1% OF ANY SVHC BY WEIGHT PER REACH REGULATION				DESCRIPTION			
UNLESS OTHERWISE SPECIFIED DIMENSIONS ARE IN INCHES [MM] TOLERANCES ARE: ANGLES: ± 1 ° 1 PLACE .X: ± .1 [2.5] 2 PLACE .XX: ± .03 [0.76] 3 PLACE .XXX: ± .010 [0.254]	 N83 W13330 Leon Road Menomonee Falls, WI 53051 USA 800.455.4683 262.253.8200	DRAWN	DATE	SWG 80A 600V 2-8kHz FILTER, NEMA 1/2 ENCL.			
		MN	08/08/18				
		CHECKED	DATE				
		MN	08/09/18	SIZE			DWG No.
		APPROVED	DATE	D		CD SWGG0080E	00
		TL	10/09/18	SCALE	1:4	SHEET 1 OF 1	