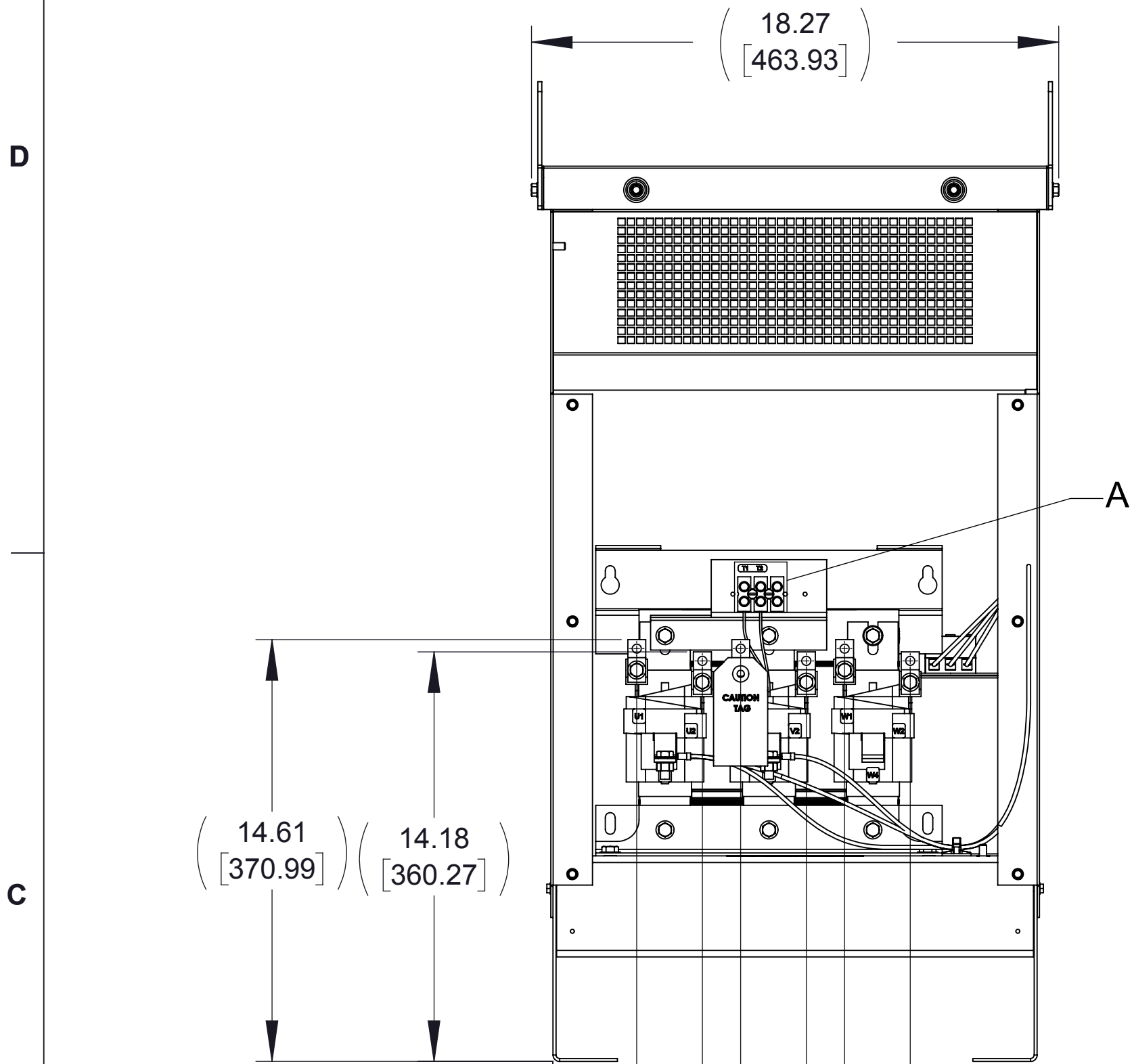
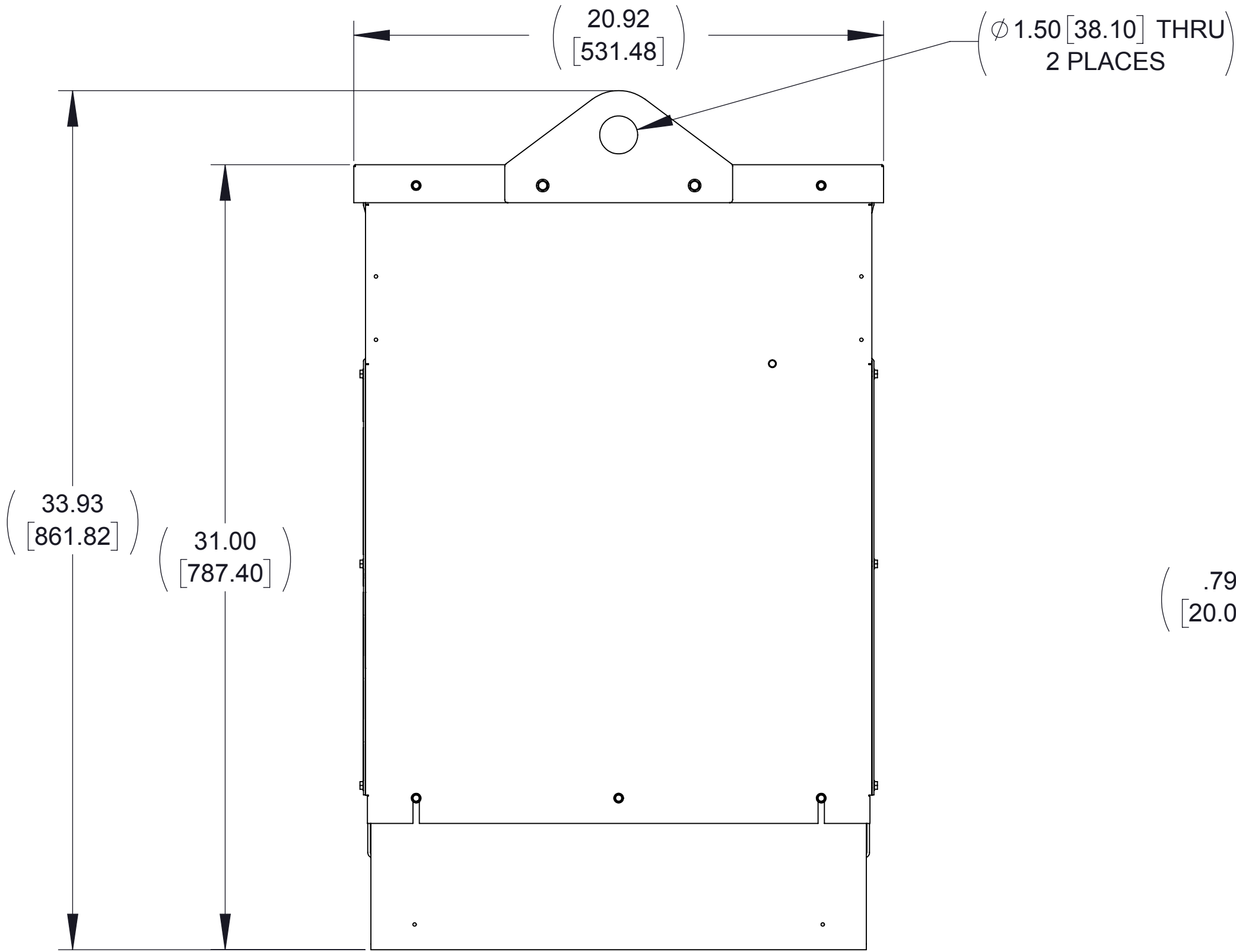


WEIGHT (LBS)
150

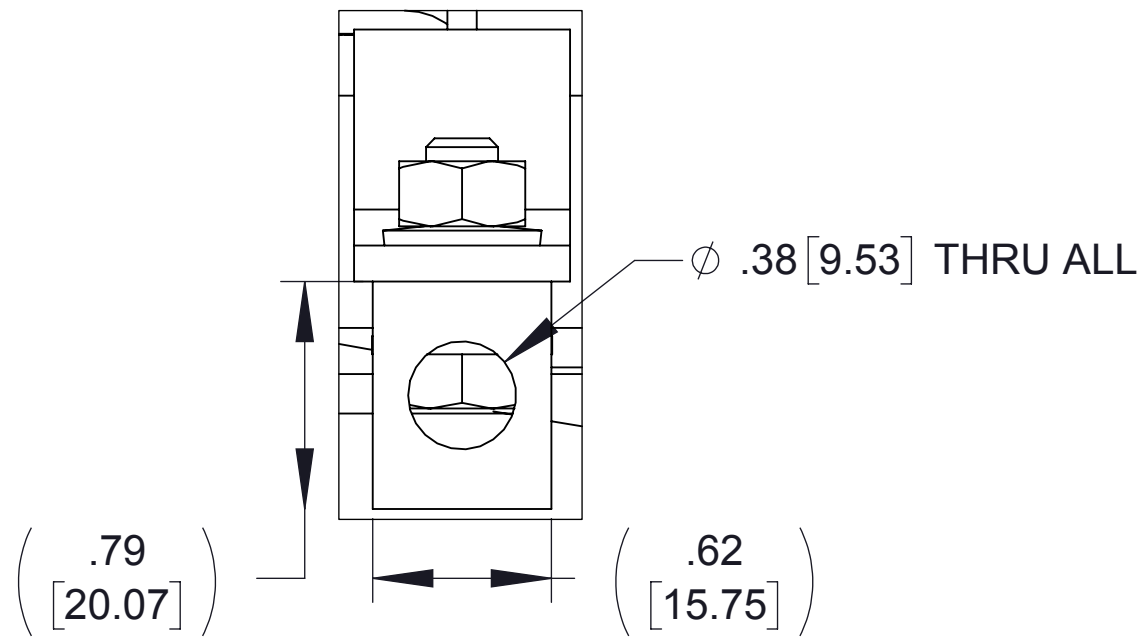
ECO No	DESCRIPTION	REV BY	DATE
M10024	UPDATED PER DRAWING SPEC.	SL	12/16/16



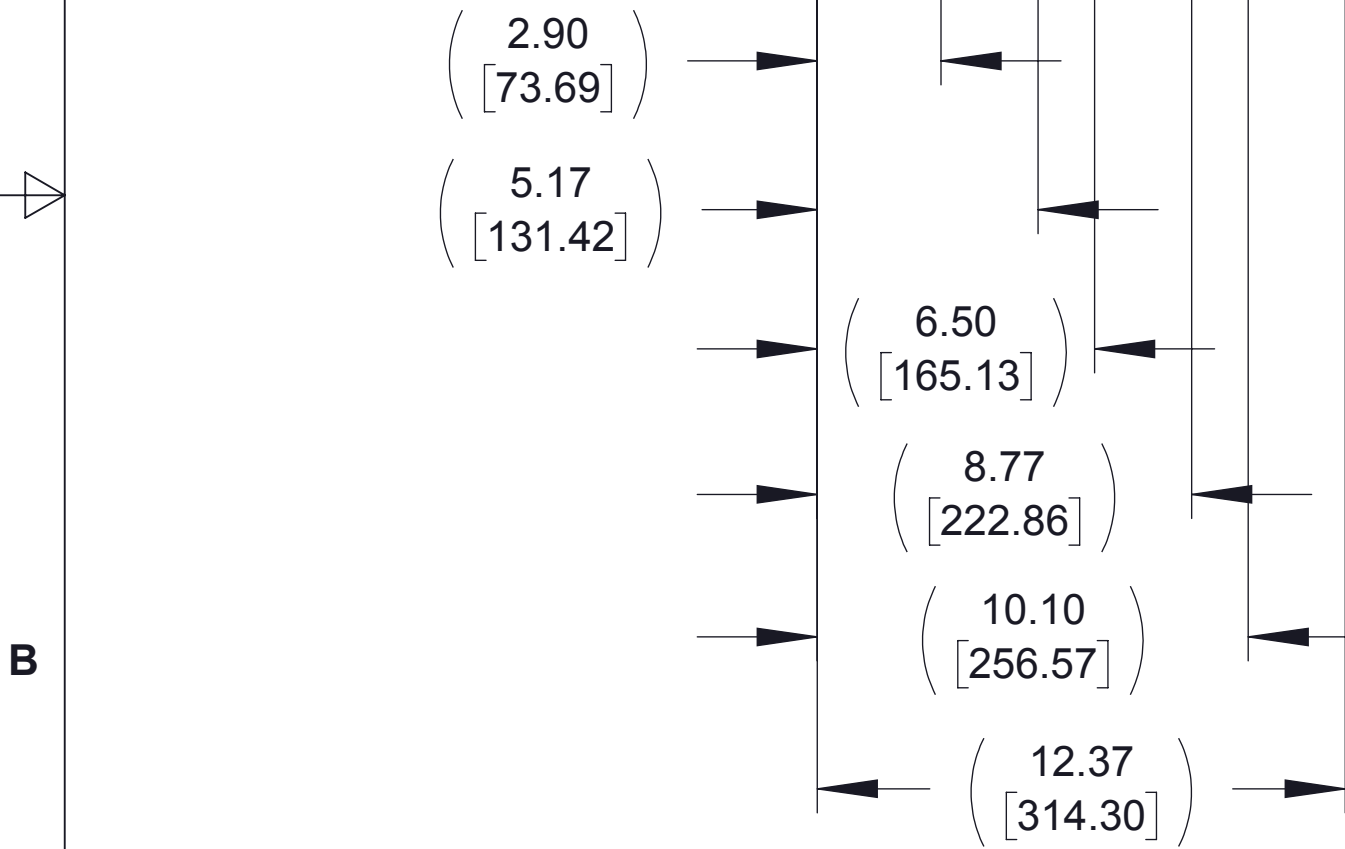
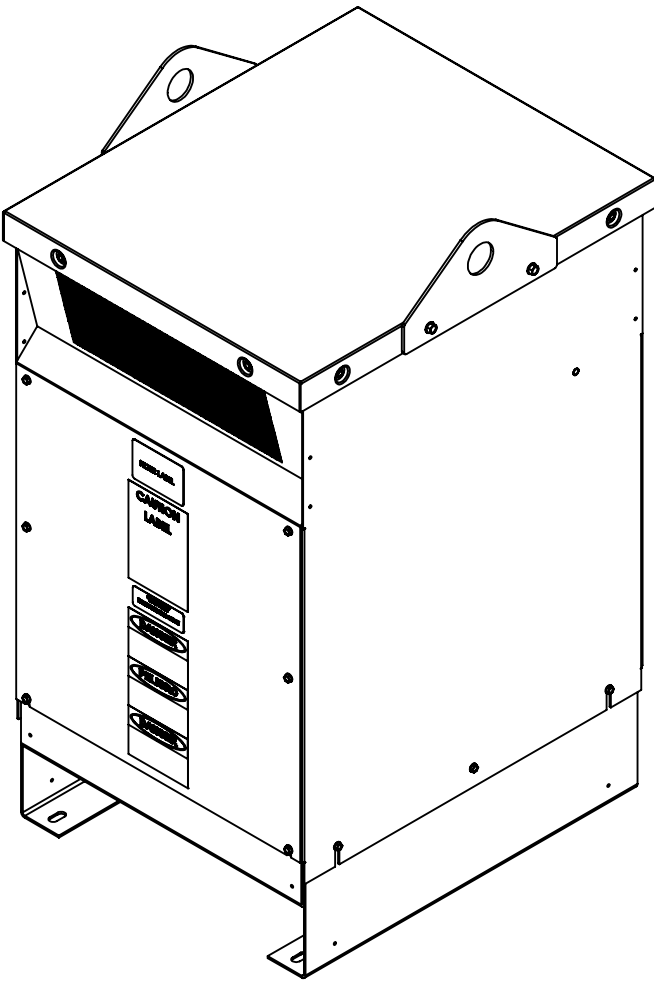
FRONT VIEW
(FRONT PANEL REMOVED)



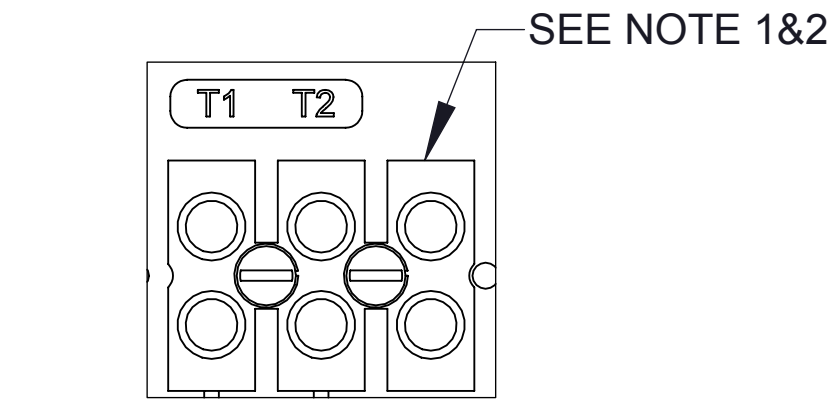
RIGHT SIDE VIEW



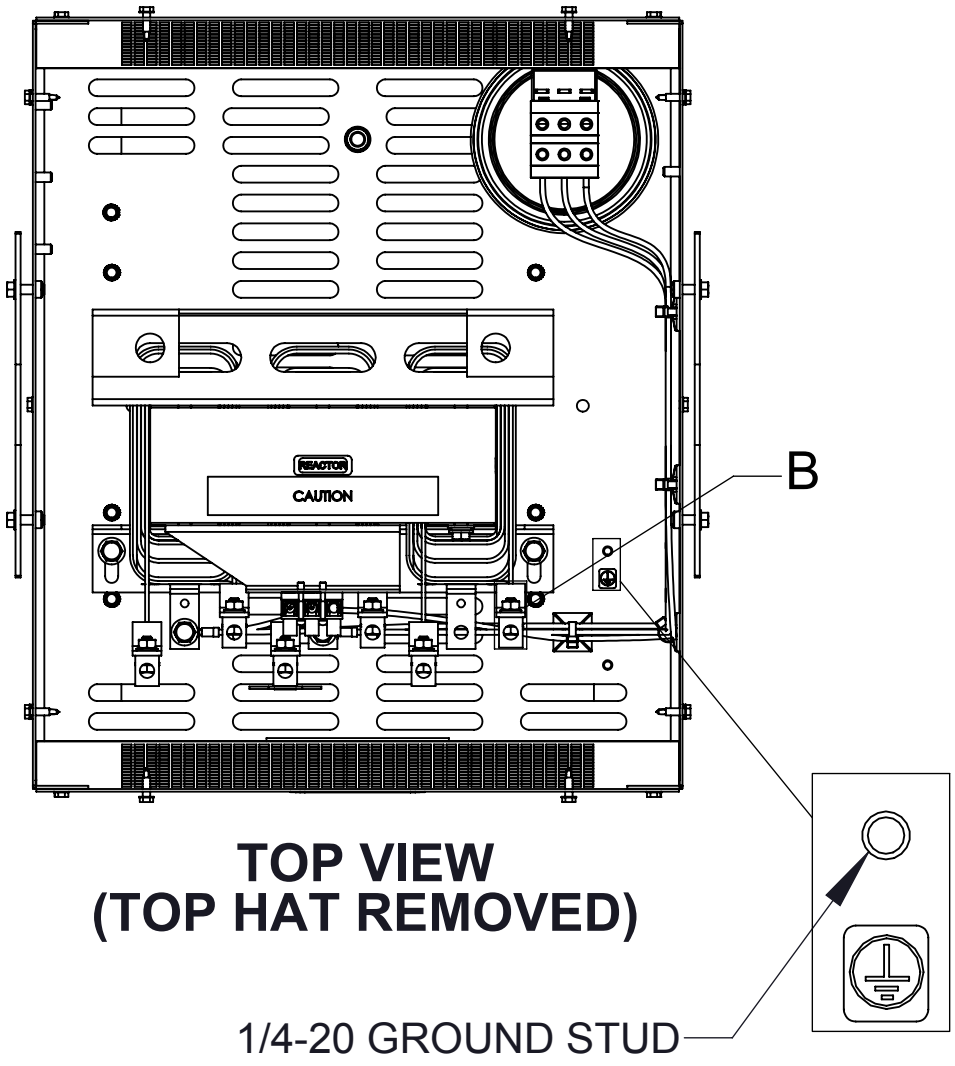
DETAIL B
LUG VIEW
(TYP 6 PLACES
U1, V1, W1
U2, V2, W2 TERMINALS)



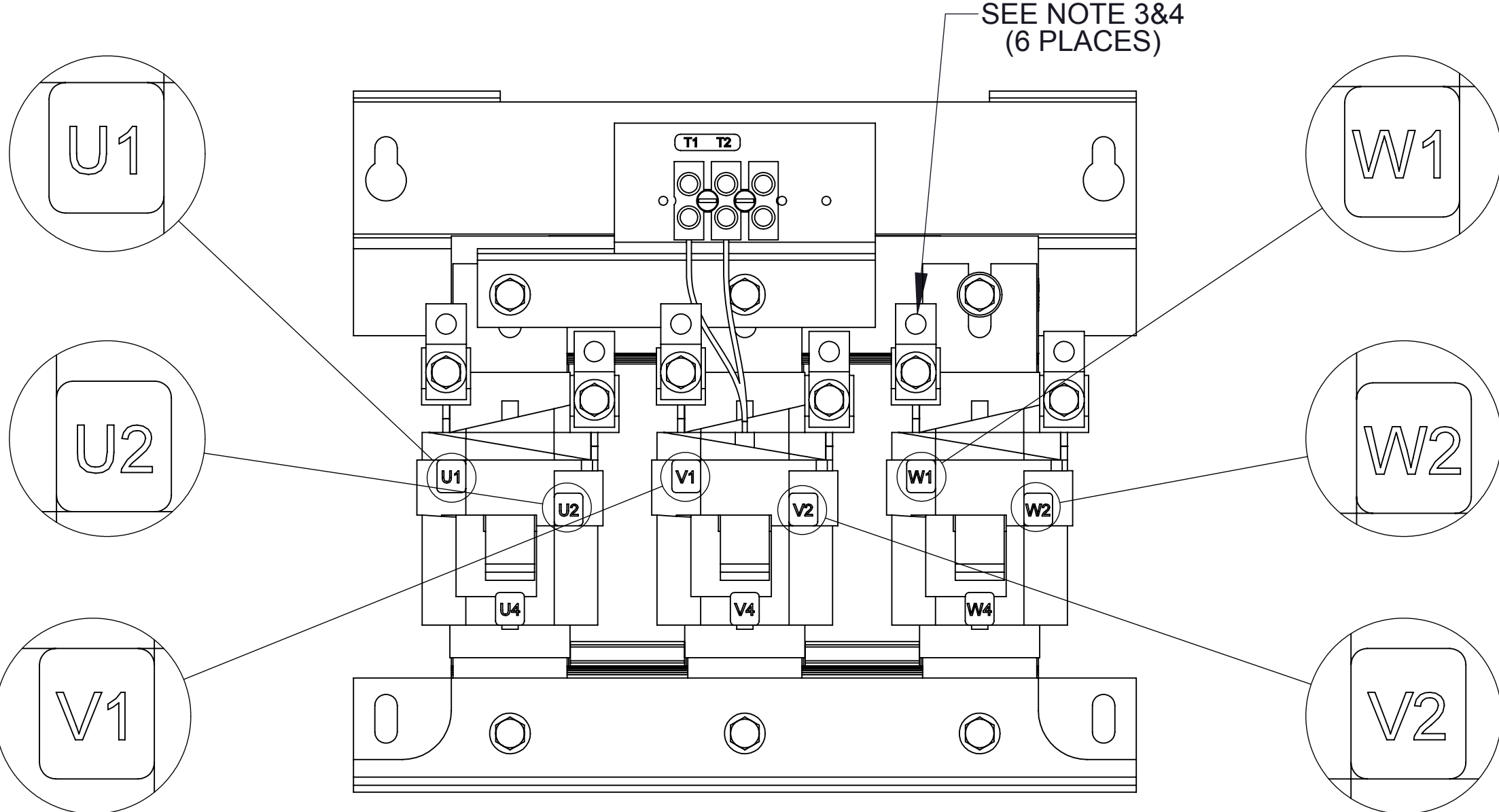
BOTTOM VIEW



DETAIL A
CUSTOMER CONNECTION
DETAIL VIEW (THERMAL)



TOP VIEW
(TOP HAT REMOVED)



CUSTOMER CONNECTION
DETAIL VIEW

- NOTES:
1. TIGHTEN TERMINAL BLOCK SCREWS TO 16 IN/LBS. TORQUE
 2. TERMINAL WIRE SIZE: 4-14 AWG.
 3. TERMINAL WIRE SIZE: 1/4 - 1/0 AWG.
 4. TIGHTEN TERMINAL BLOCK SCREWS TO 45 IN/LBS. TORQUE

THE COMPONENT, PART OR ASSEMBLY DESCRIBED IN THIS DOCUMENT MUST COMPLY WITH THE EU(EUROPEAN UNION) DIRECTIVE RoHS2		MATERIAL		CONFIDENTIAL AND PROPRIETARY INFORMATION THIS DOCUMENT CONTAINS CONFIDENTIAL AND PROPRIETARY INFORMATION OF MTE CORPORATION AND MAY NOT BE USED, COPIED OR DISCLOSED TO OTHERS EXCEPT WITH THE AUTHORIZED WRITTEN PERMISSION OF MTE CORPORATION	
CONTAINS <0.1% OF ANY SVHC BY WEIGHT PER REACH REGULATION				DESCRIPTION	
UNLESS OTHERWISE SPECIFIED DIMENSIONS ARE IN INCHES [MM] TOLERANCES ARE:				SWG 80A 380-480V 2-8kHz FILTER NEMA 1/2	
ANGLES: ± 1 °				SIZE	
1 PLACE .X: ± .1 [2.5]				D	
2 PLACE .XX: ± .03 [0.76]				DWG No.	
3 PLACE .XXX: ± .010 [0.254]				CD SWGG0080D	
				REV	
				03	
				SCALE	
				1:4	
				SHEET 1 OF 1	