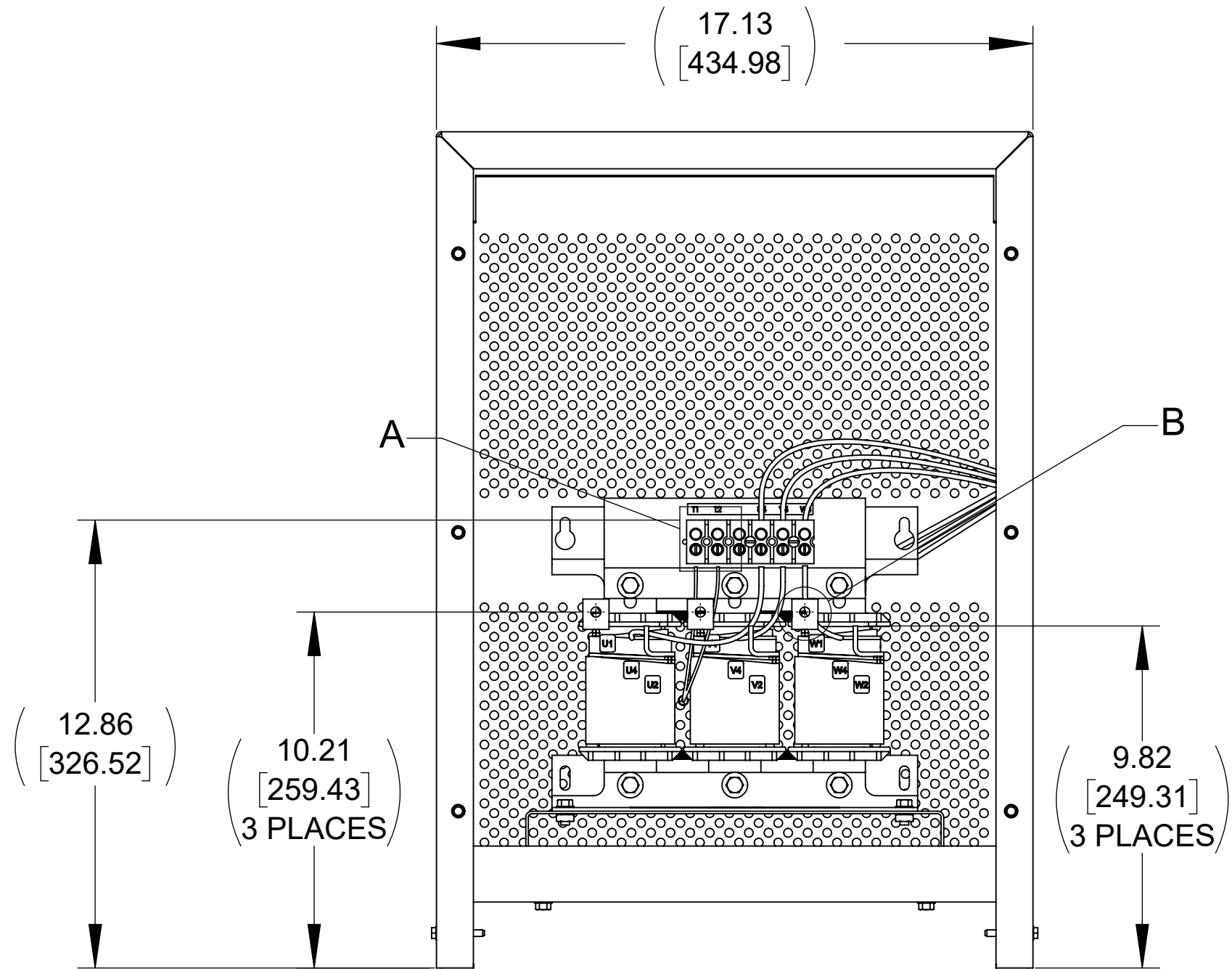
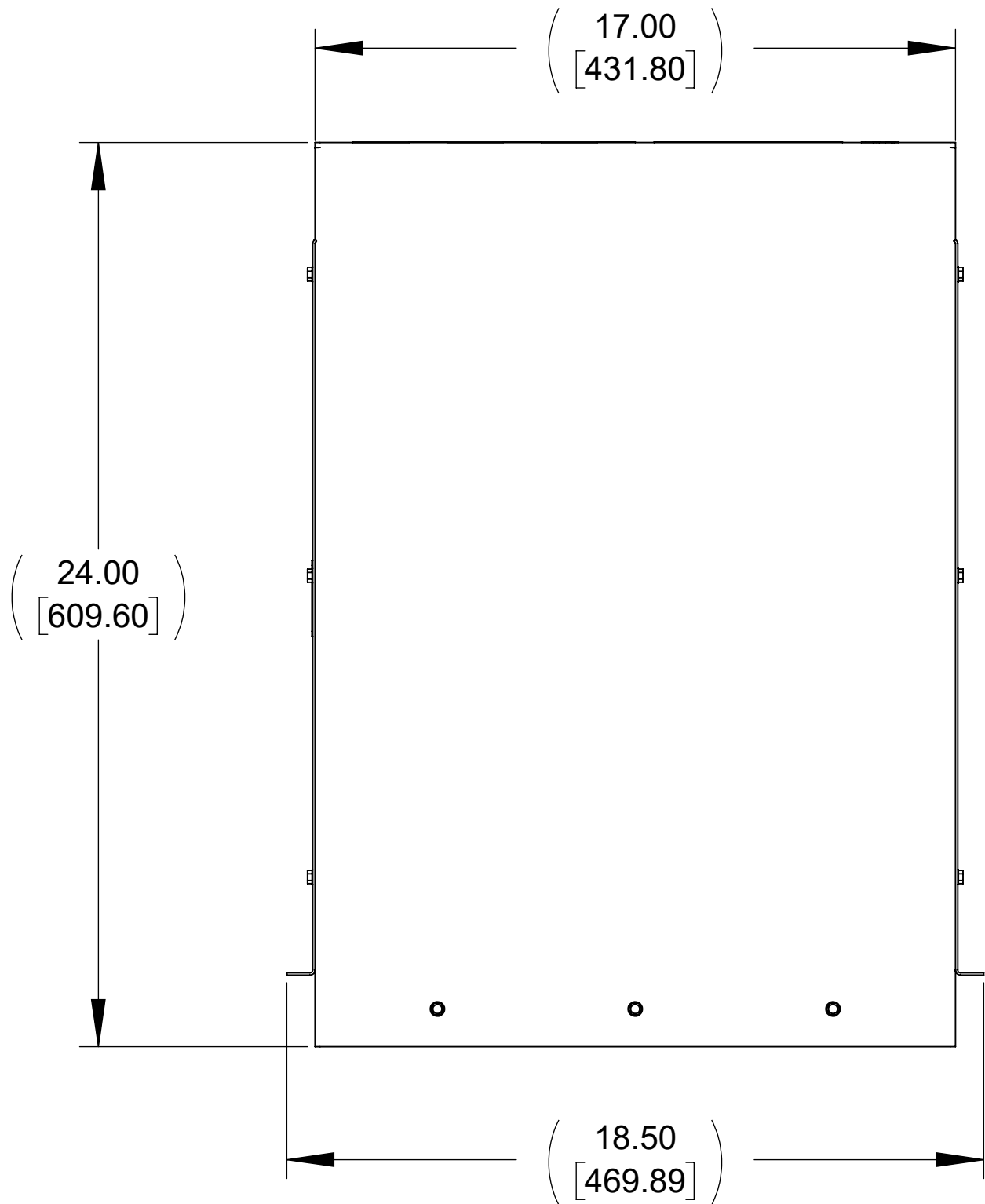


APPROX. WEIGHT
(LBS)
82

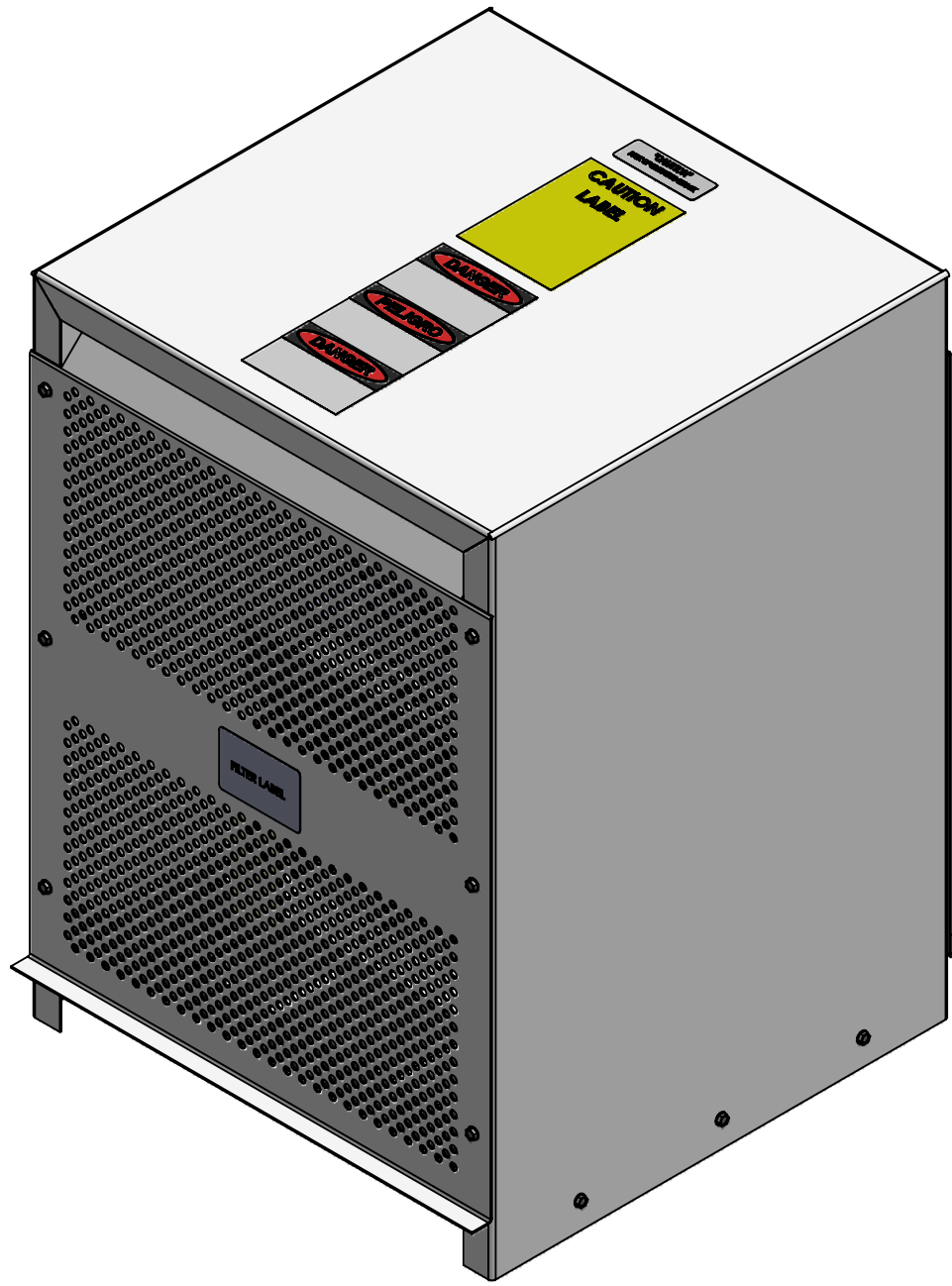
ECO No	DESCRIPTION	REV BY	DATE



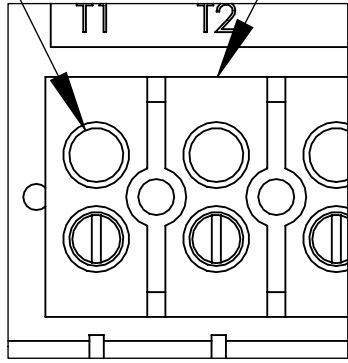
FRONT VIEW
(PANELS REMOVED)



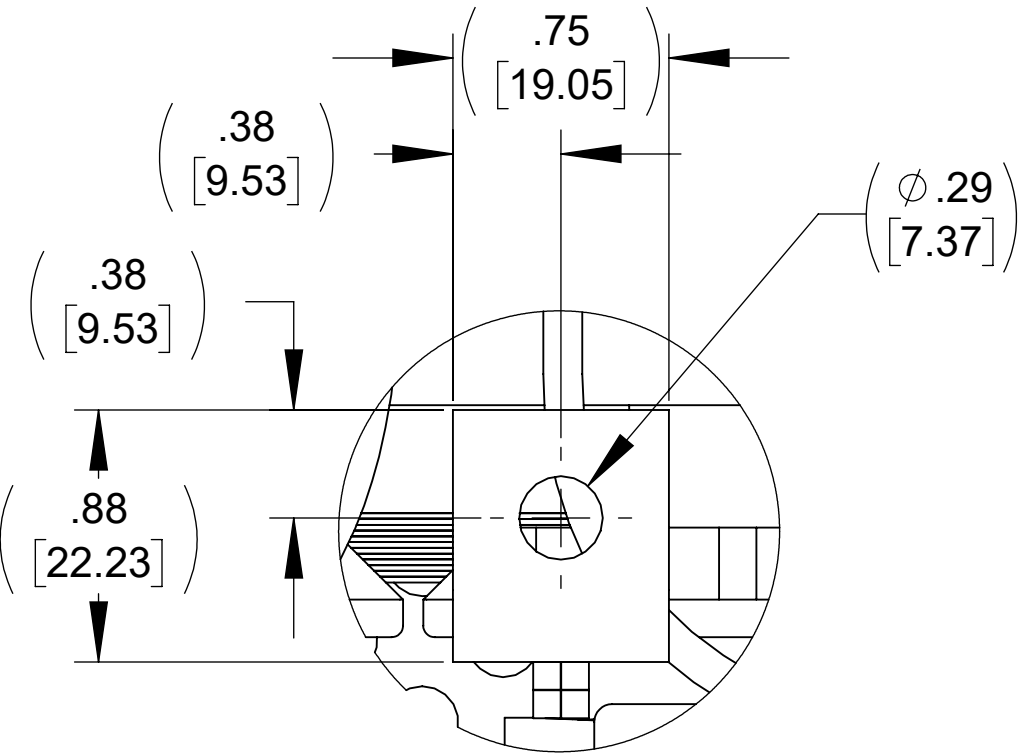
SIDE VIEW



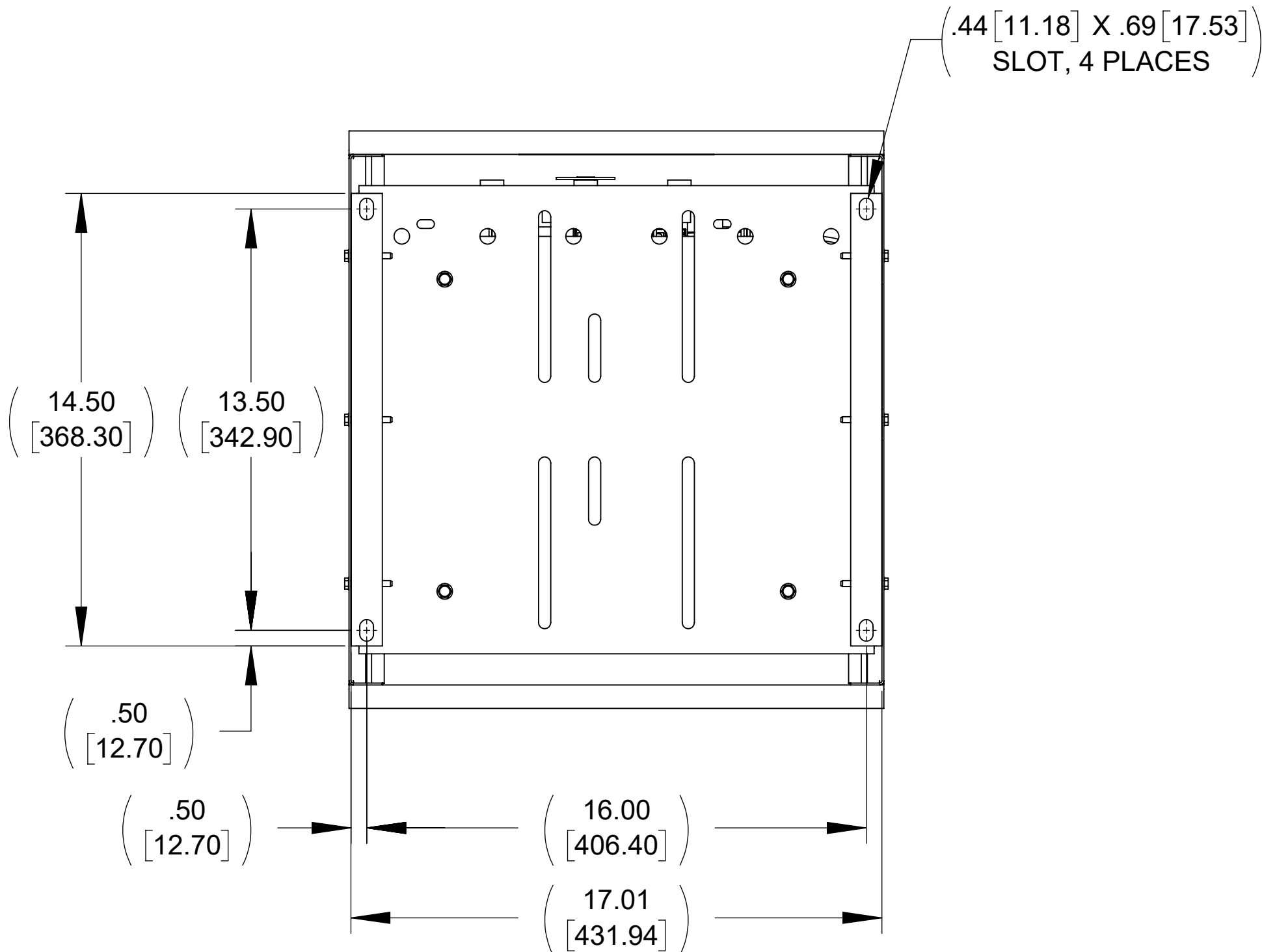
SEE NOTE 1 SEE NOTE 2



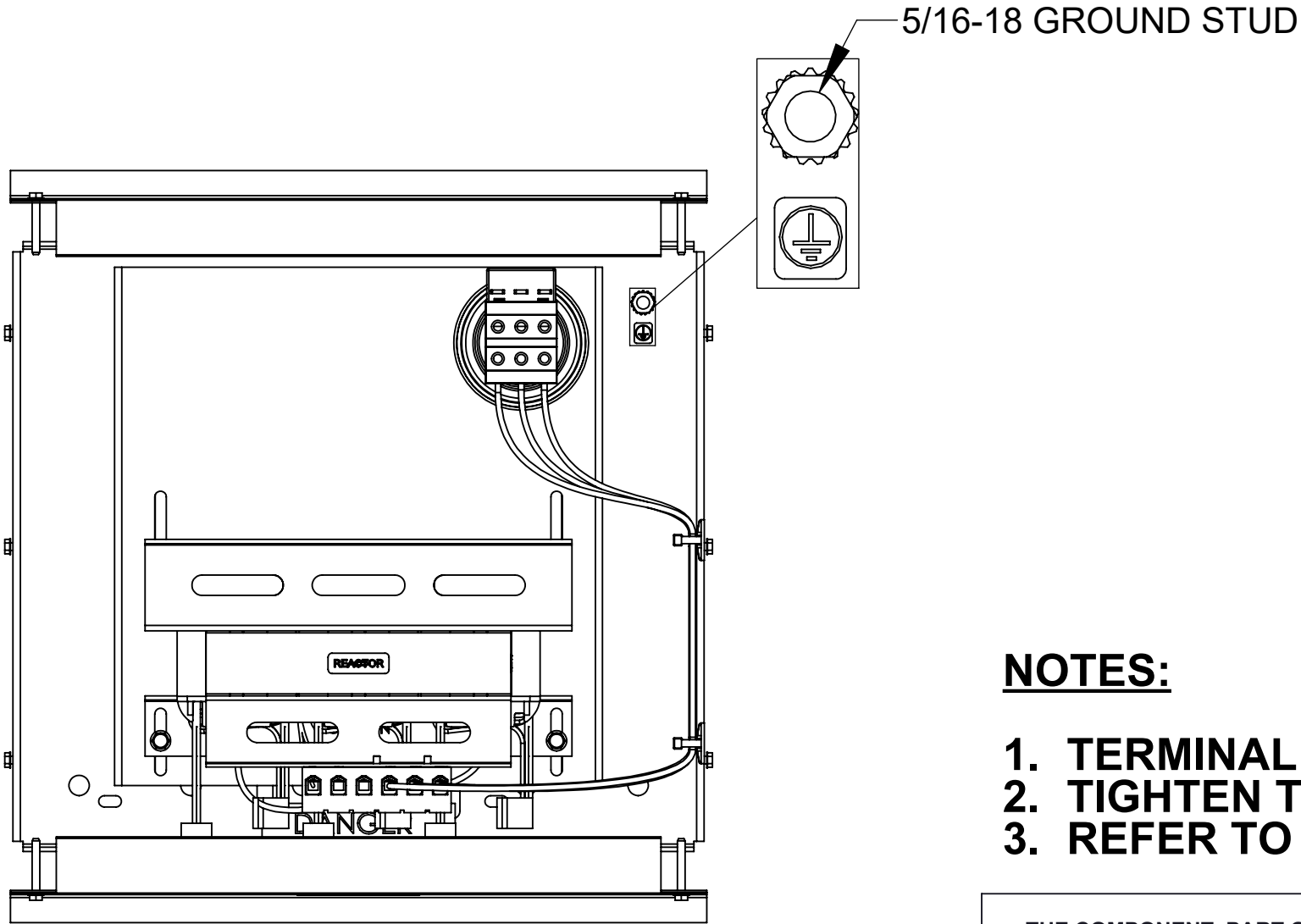
DETAIL A
CUSTOMER CONNECTION
DETAIL VIEW (THERMAL)



DETAIL B
CUSTOMER CONNECTION
DETAIL VIEW
(6 PLACES)



BOTTOM VIEW



TOP VIEW
(PANELS REMOVED)

NOTES:

1. TERMINAL WIRE SIZE: 4-14 AWG.
2. TIGHTEN TERMINAL BLOCK SCREWS TO 16 IN/LBS. TORQUE.
3. REFER TO USER MANUAL FOR COMPLETE INSTALLATION INSTRUCTIONS.

THE COMPONENT, PART OR ASSEMBLY DESCRIBED IN THIS DOCUMENT MUST COMPLY WITH THE EU(EUROPEAN UNION) DIRECTIVE RoHS2		MATERIAL		CONFIDENTIAL AND PROPRIETARY INFORMATION THIS DOCUMENT CONTAINS CONFIDENTIAL AND PROPRIETARY INFORMATION OF MTE CORPORATION AND MAY NOT BE USED, COPIED OR DISCLOSED TO OTHERS EXCEPT WITH THE AUTHORIZED WRITTEN PERMISSION OF MTE CORPORATION		
CONTAINS <0.1% OF ANY SVHC BY WEIGHT PER REACH REGULATION				DESCRIPTION		
UNLESS OTHERWISE SPECIFIED DIMENSIONS ARE IN INCHES [MM] TOLERANCES ARE: ANGLES: ± 1 ° 1 PLACE .X: ± .1 [2.5] 2 PLACE .XX: ± .03 [0.76] 3 PLACE .XXX: ± .010 [0.254]		MTE POWER QUALITY. SOLVED. N83 W13330 Leon Road Menomonee Falls, WI 53051 USA 800.455-4683 262.253-8200		DRAWN KV 07/10/19	DATE	SWG 70A 208-240V 2-8kHz FILTER, NEMA 1/2 ENCL.
				CHECKED CH 11/11/19	DATE	
				APPROVED PY 12/04/19	DATE	
				SIZE D	DWG No. CD SWGG0070A	REV 00
				SCALE 1:4	SHEET 1 OF 1	