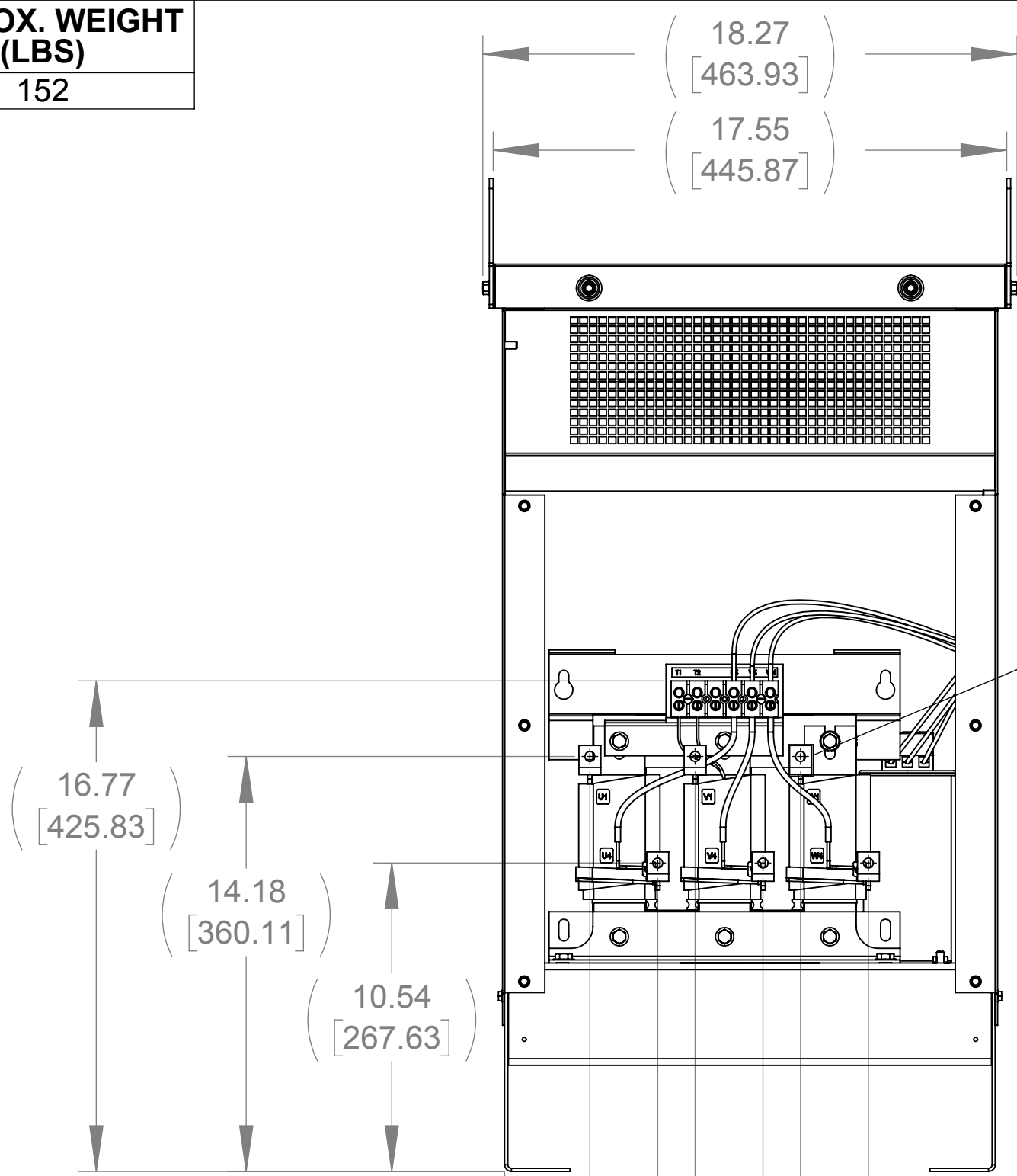


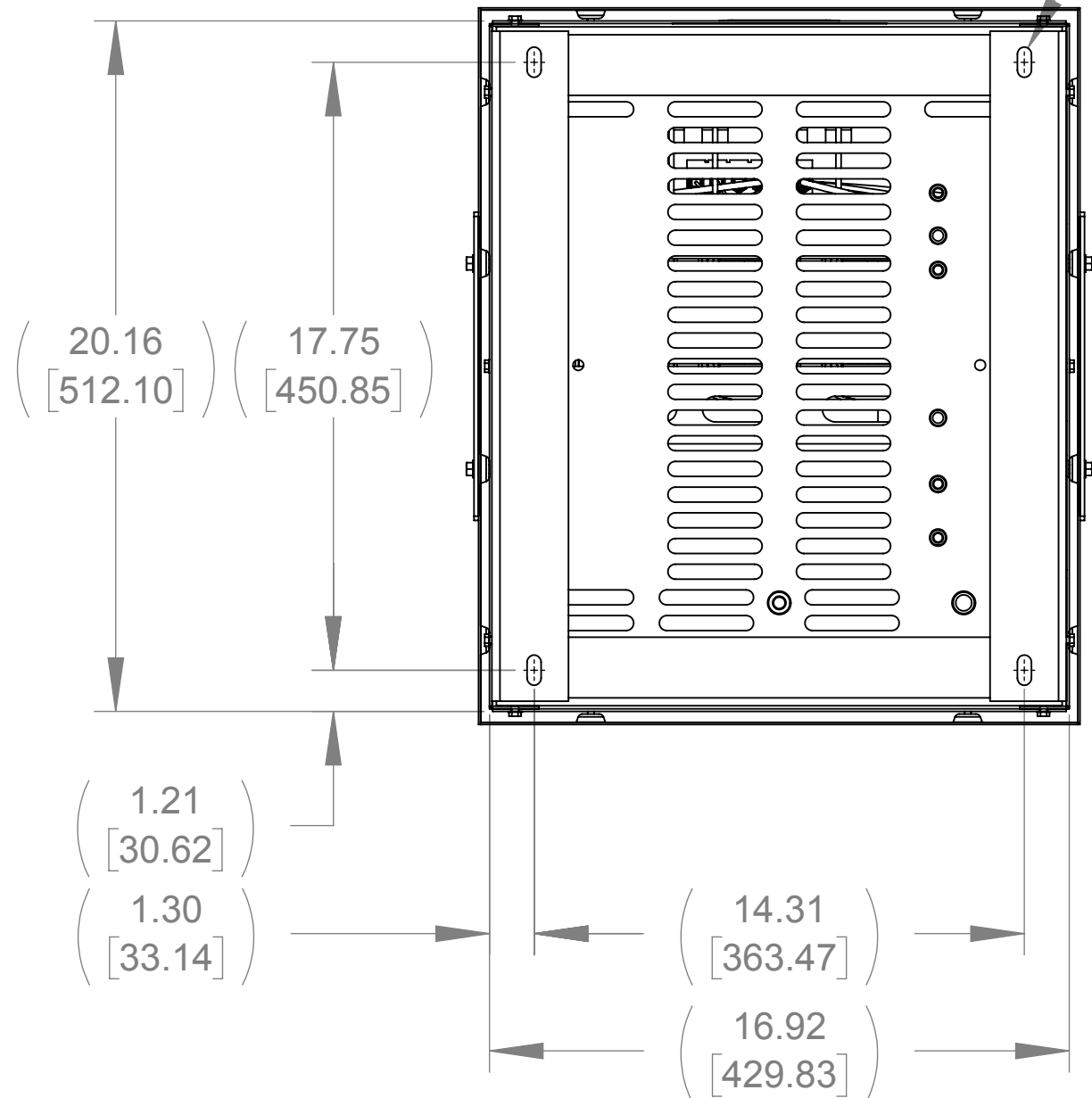
APPROX. WEIGHT  
(LBS)  
152

ECO No	DESCRIPTION	REV BY	DATE

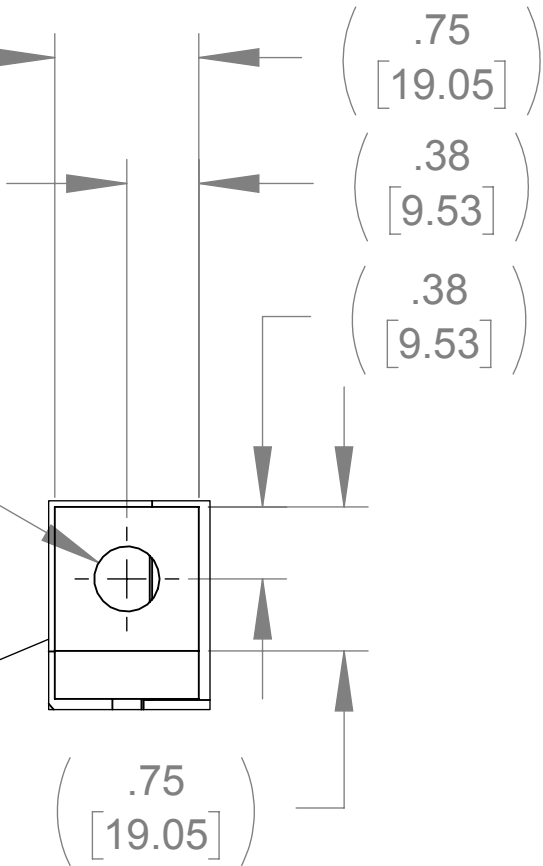


FRONT VIEW  
(FRONT PANEL REMOVED)

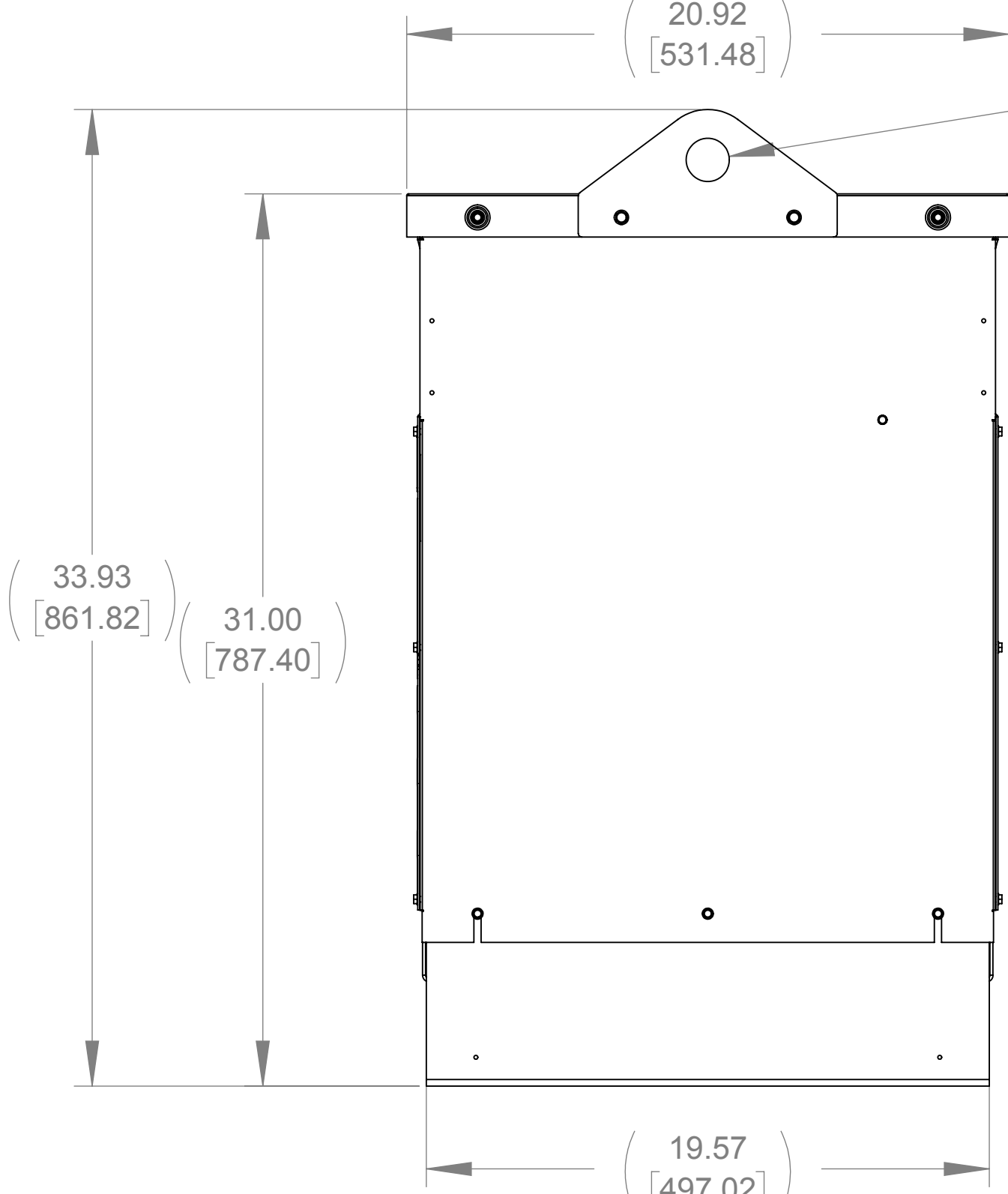
(.41 [10.41] X .88 [22.35])  
SLOT, 4 PLACES



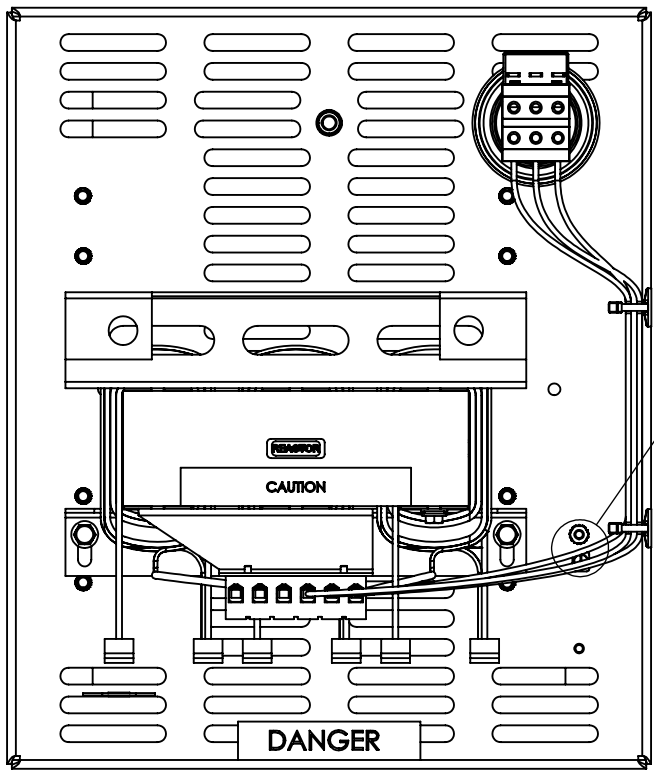
BOTTOM VIEW



LUG VIEW  
(6 PLACES)



RIGHT SIDE VIEW

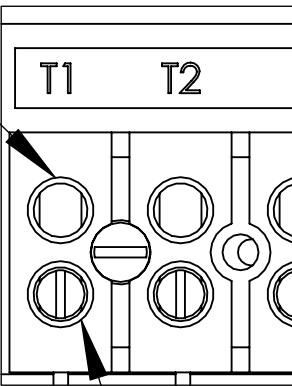


TOP VIEW  
(TOP HAT REMOVED)

1/4-20 GROUND STUD

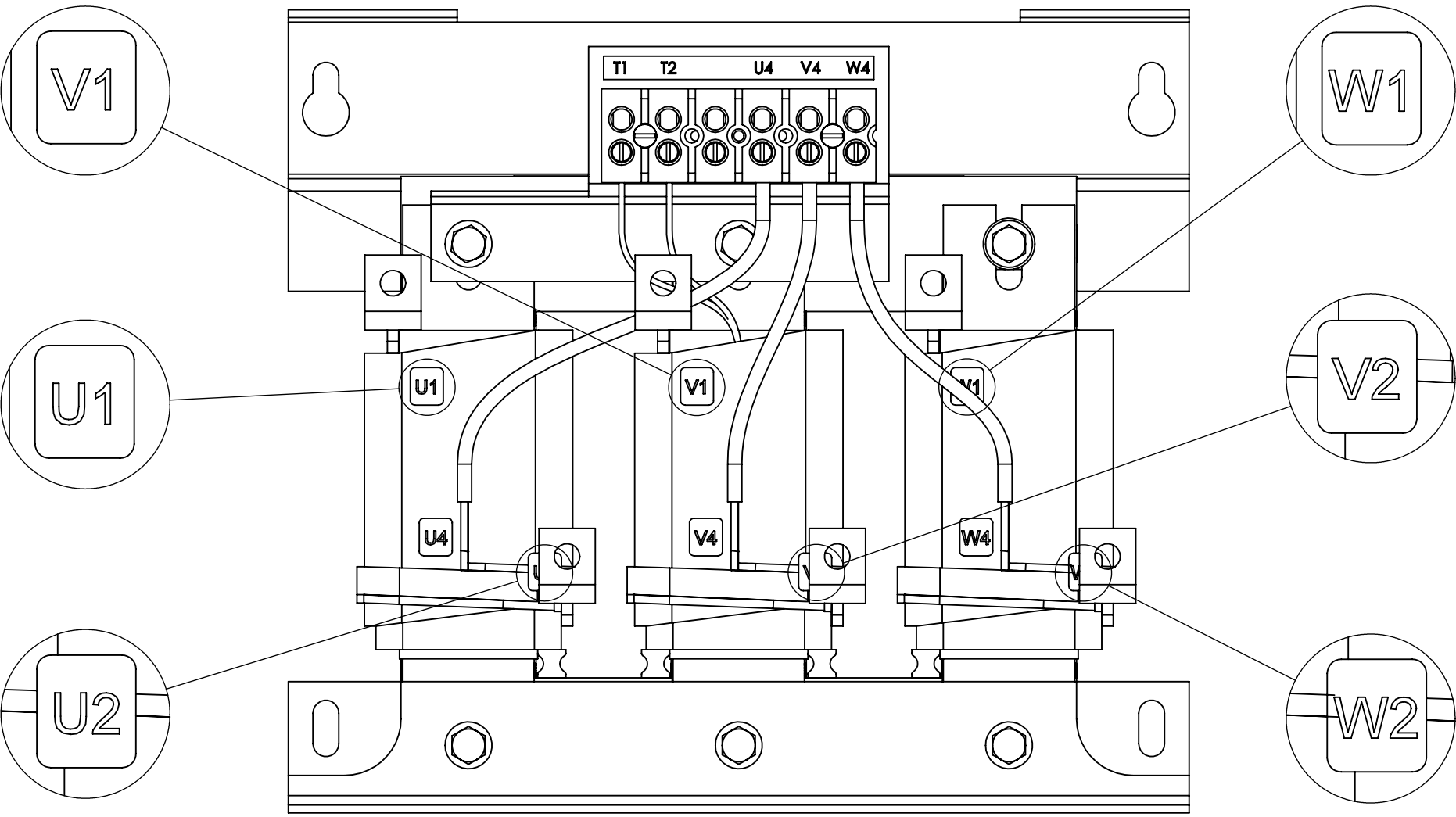
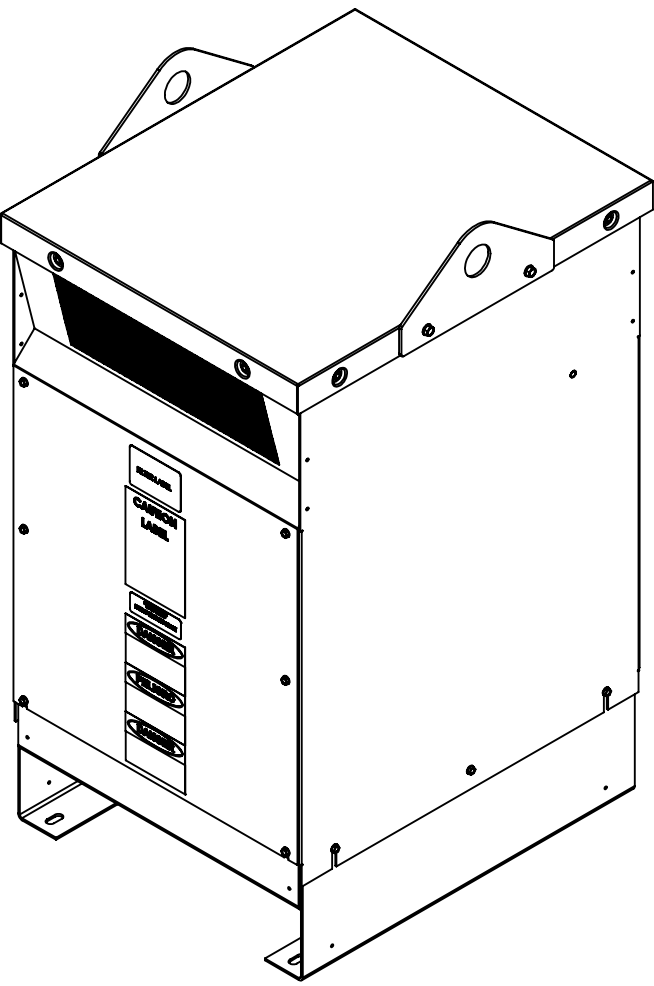
(Ø 1.50 [38.10] THRU  
2 PLACES)

SEE NOTE 2




SEE NOTE 1

CUSTOMER CONNECTION  
DETAIL VIEW (THERMAL)



CUSTOMER CONNECTION  
DETAIL VIEW

- NOTES:
1. TIGHTEN TERMINAL BLOCK SCREWS TO 16 IN/LBS. TORQUE, MAX.
  2. TERMINAL WIRE SIZE: 4-14 AWG.

THE COMPONENT, PART OR ASSEMBLY DESCRIBED IN THIS DOCUMENT MUST COMPLY WITH THE EU(EUROPEAN UNION) DIRECTIVE RoHS2		MATERIAL		CONFIDENTIAL AND PROPRIETARY INFORMATION THIS DOCUMENT CONTAINS CONFIDENTIAL AND PROPRIETARY INFORMATION OF MTE CORPORATION AND MAY NOT BE USED, COPIED OR DISCLOSED TO OTHERS EXCEPT WITH THE AUTHORIZED WRITTEN PERMISSION OF MTE CORPORATION		
CONTAINS <0.1% OF ANY SVHC BY WEIGHT PER REACH REGULATION				DESCRIPTION		
UNLESS OTHERWISE SPECIFIED DIMENSIONS ARE IN INCHES [MM] TOLERANCES ARE:  ANGLES: ± 1 °  1 PLACE .X: ± .1 [2.5]  2 PLACE .XX: ± .03 [0.76]  3 PLACE .XXX: ± .010 [0.254]	 <div>N83 W13330 Leon Road Menomonee Falls, WI 53051 USA 800.455-4683 262.253-8200</div>	DRAWN	DATE	SWG 65A 600V 2-8kHz FILTER, NEMA 1/2 ENCL		
		WF	08/15/18			
		CHECKED	DATE			
		WF	08/23/18			
		APPROVED	DATE	SIZE	DWG No.	REV
		TL	10/09/18	D	CD SWGG0065E	00
				SCALE	1:4	SHEET 1 OF 1