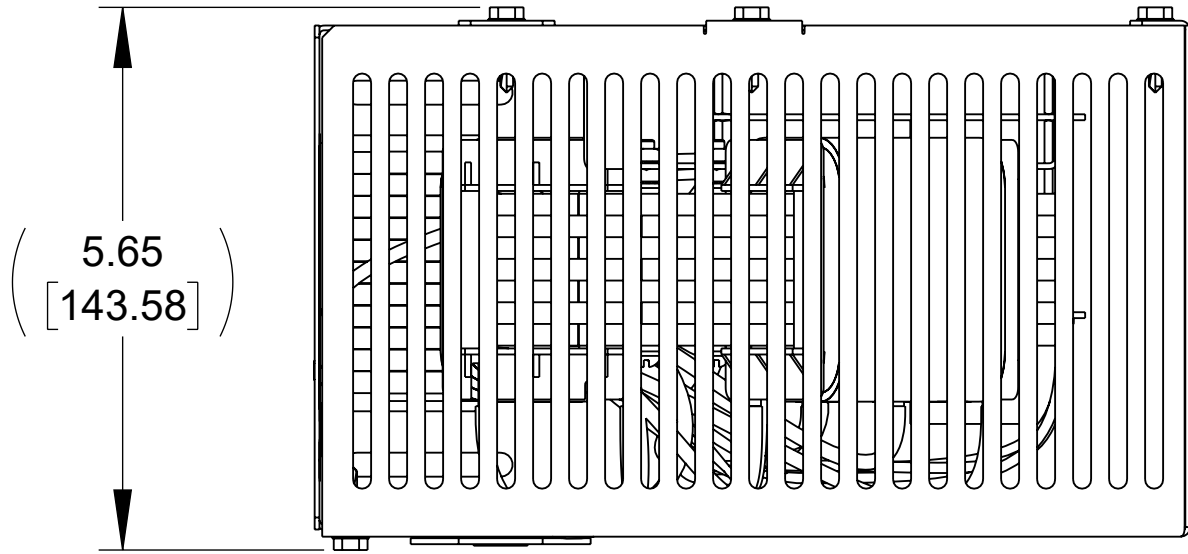
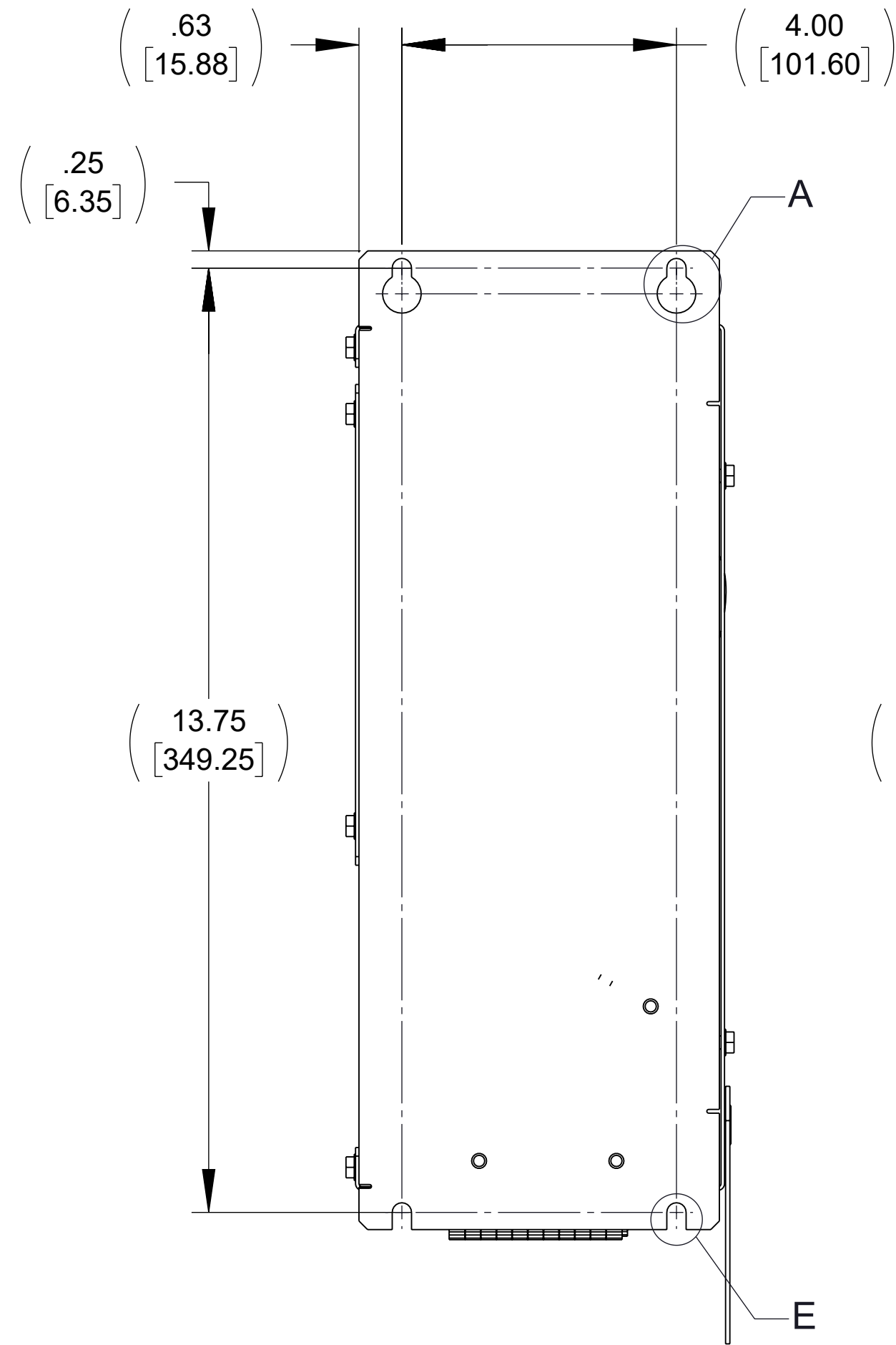


APPROX. WEIGHT
(LBS)
23

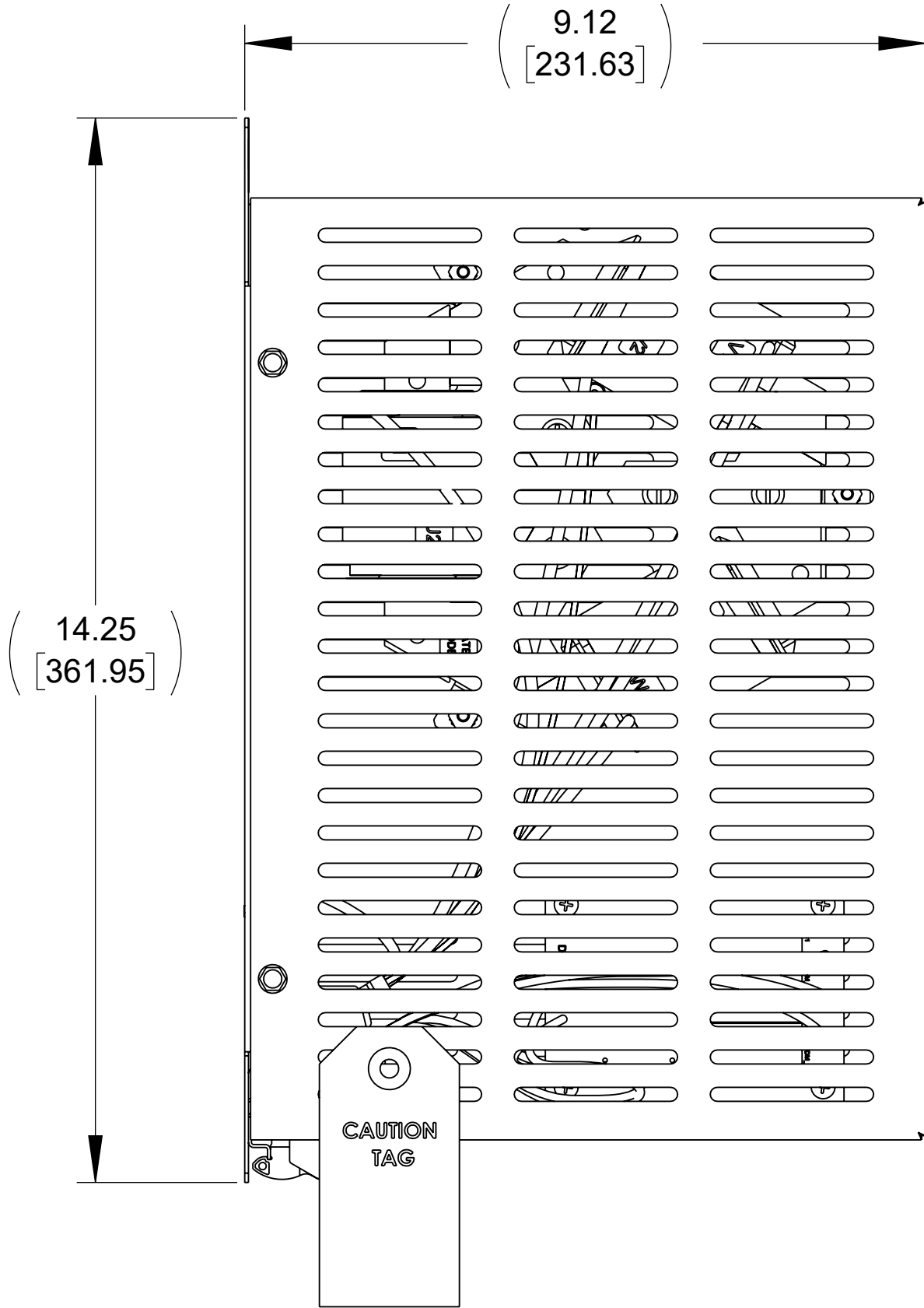
ECO No	DESCRIPTION	REV BY	DATE
M14893	RELEASED TO PRODUCTION APPROVED	MK	05/01/23



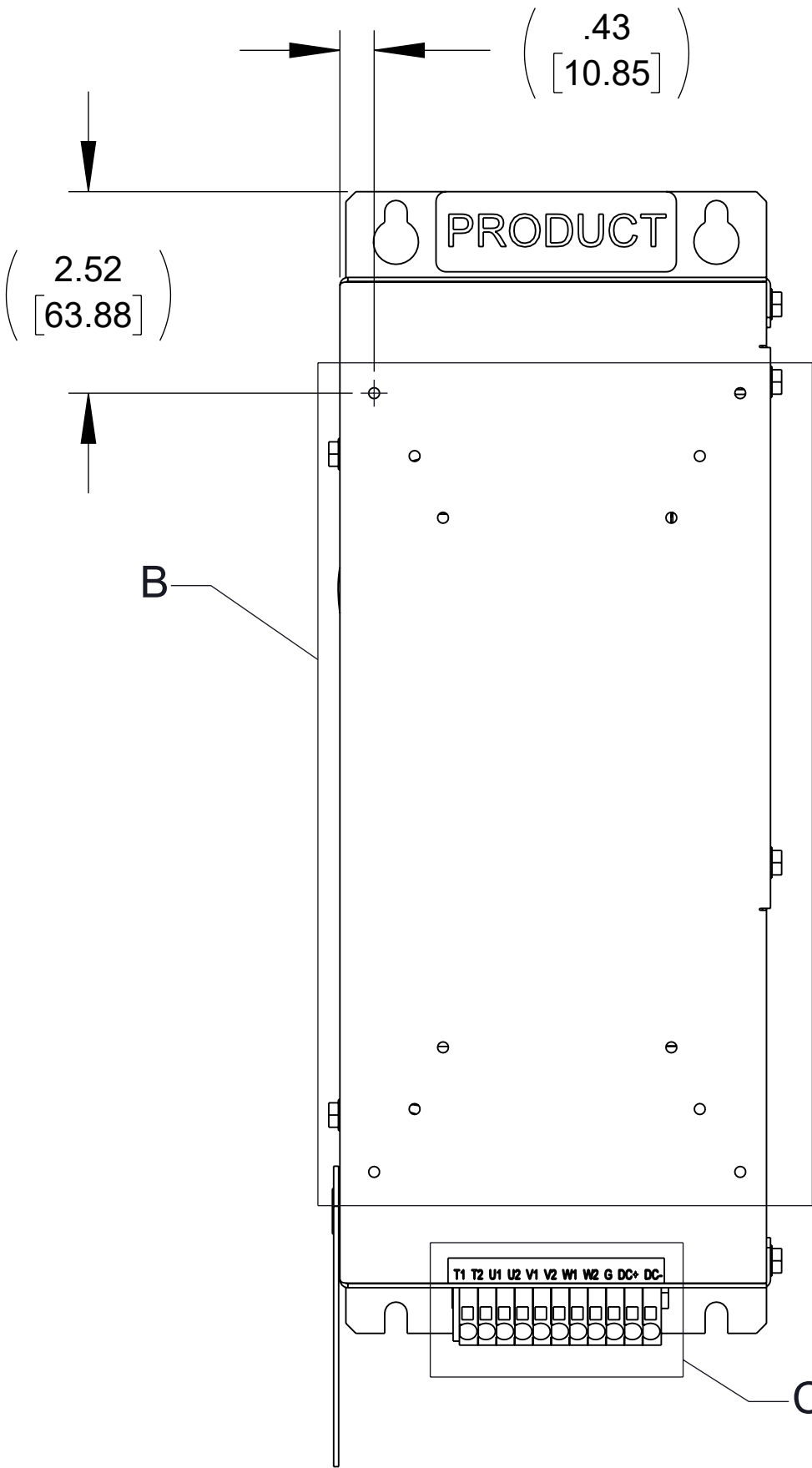
TOP VIEW



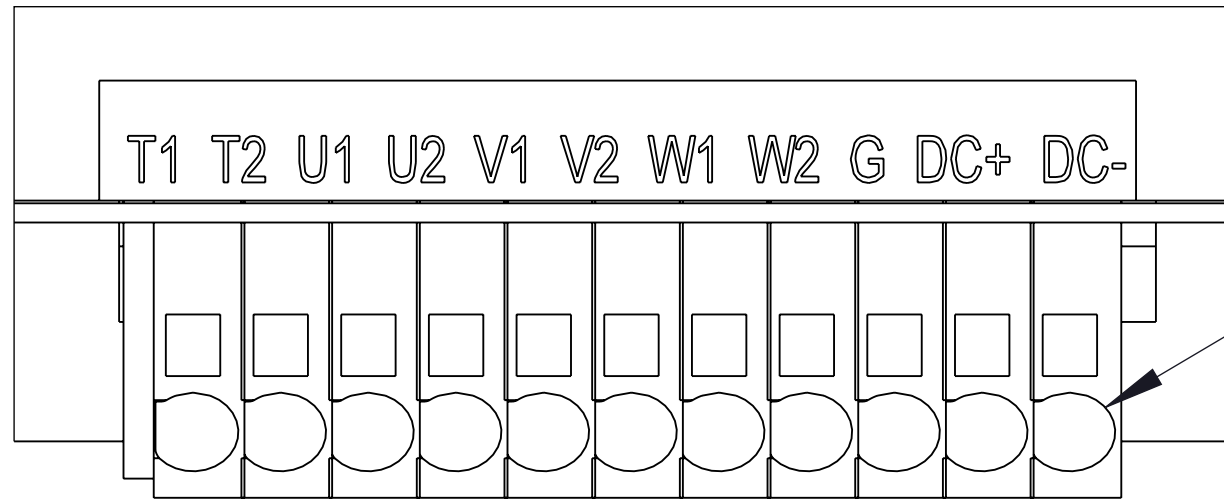
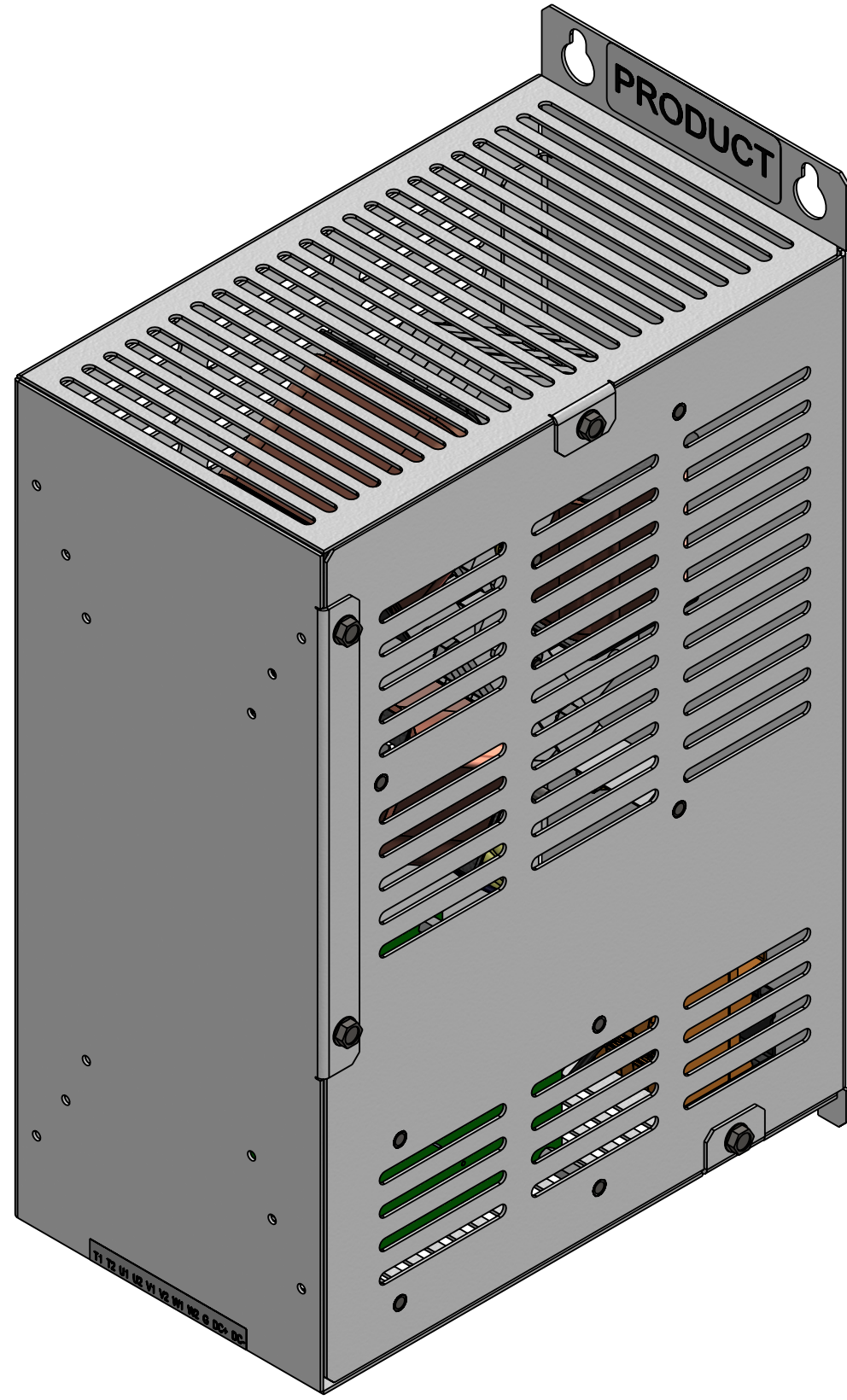
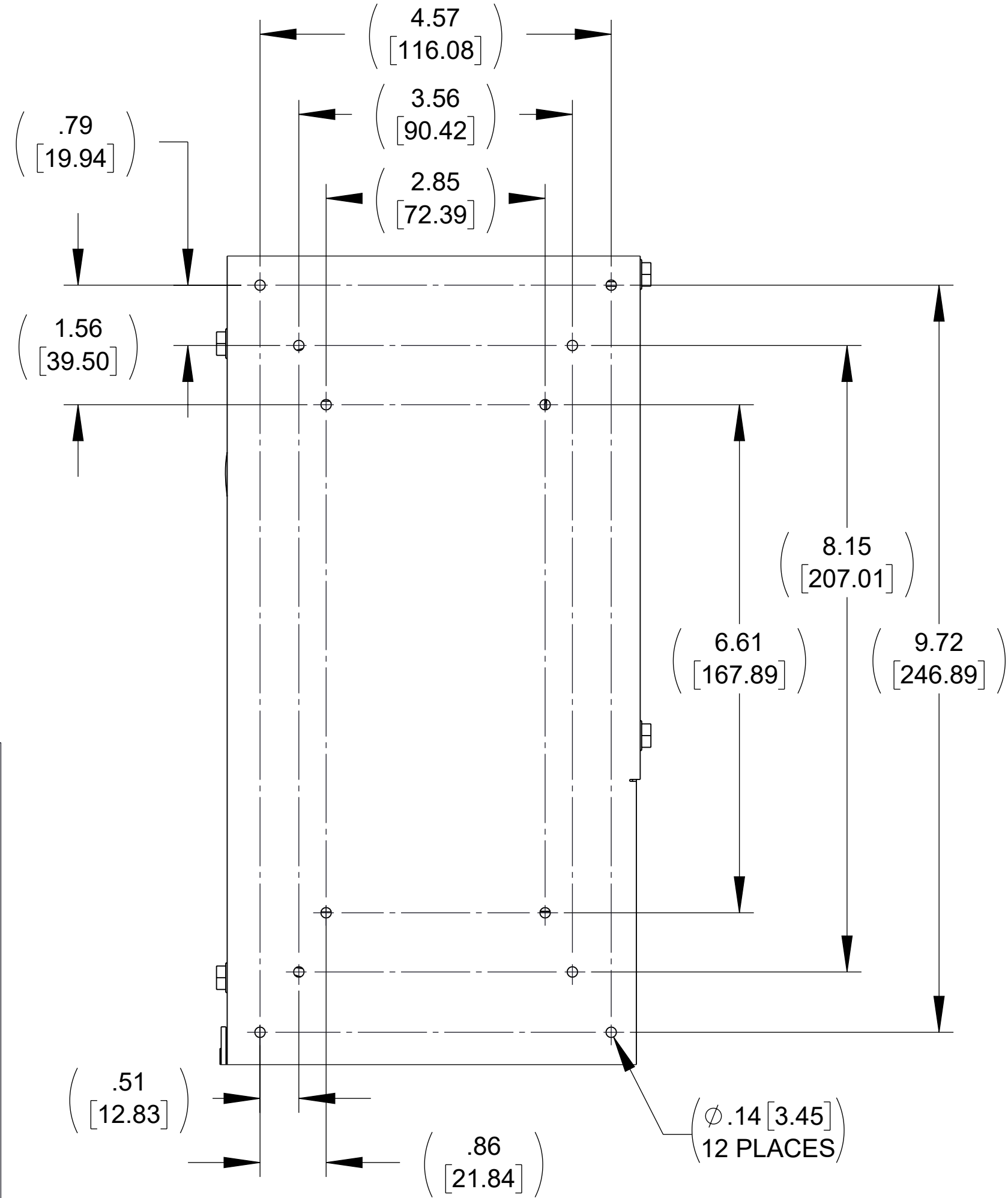
BACK VIEW



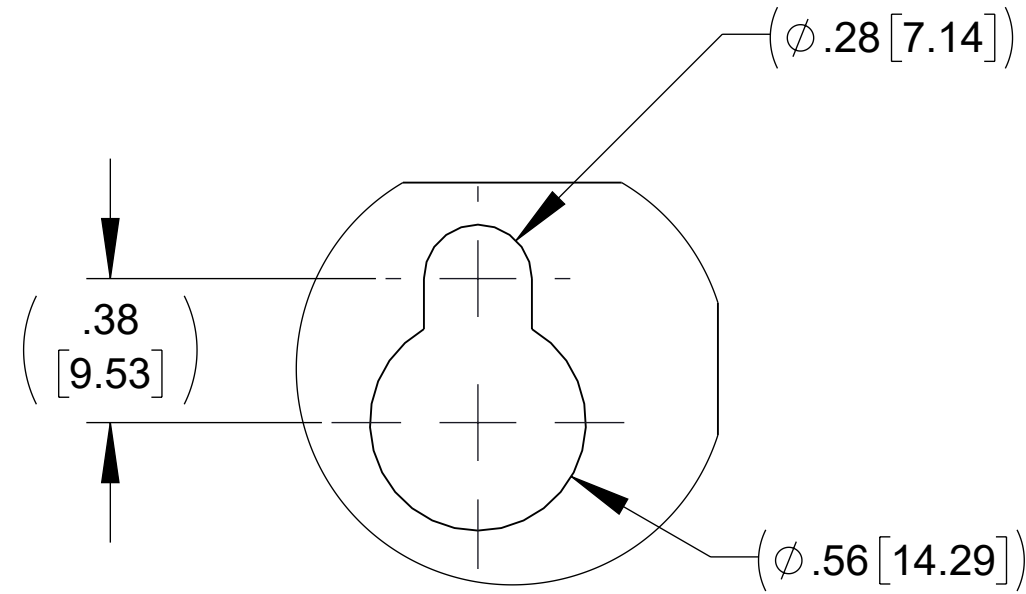
LEFT VIEW



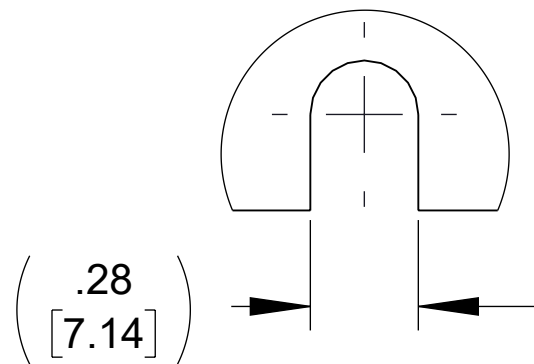
FRONT VIEW



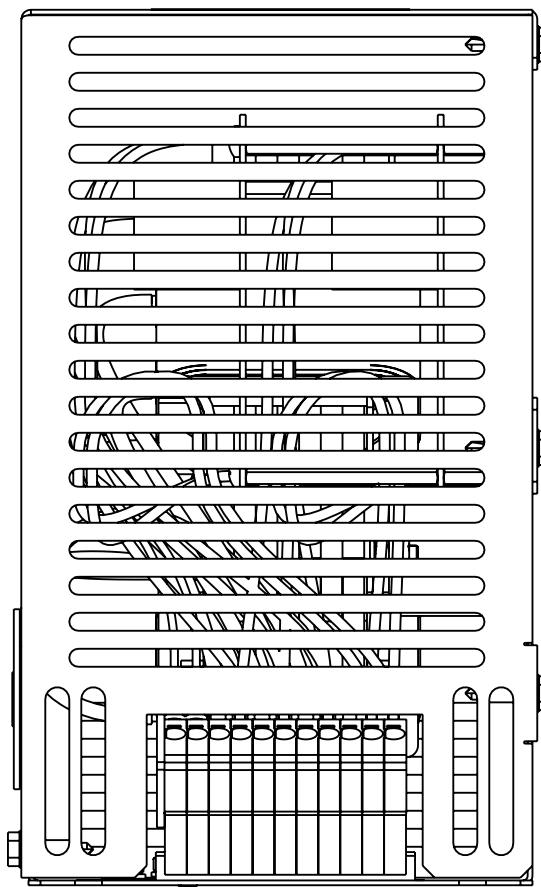
CUSTOMER CONNECTION
DETAIL VIEW



DETAIL A
(2 PLACES)



DETAIL B
(2 PLACES)



BOTTOM VIEW

NOTES:

1. TERMINAL WIRE RANGE: 18-14 AWG
2. REFER TO USER MANUAL FOR COMPLETE INSTALLATION INSTRUCTIONS

THE COMPONENT, PART OR ASSEMBLY DESCRIBED IN THIS DOCUMENT MUST COMPLY WITH THE EU(EUROPEAN UNION) DIRECTIVE ROHS2		DRAWN BY: KV	DATE 04/20/23	CONFIDENTIAL AND PROPRIETARY INFORMATION THIS DOCUMENT CONTAINS CONFIDENTIAL AND PROPRIETARY INFORMATION OF MTE CORPORATION AND MAY NOT BE USED, COPIED OR DISCLOSED TO OTHERS EXCEPT WITH THE AUTHORIZED WRITTEN PERMISSION OF MTE CORPORATION	
CONTAINS <0.1% OF ANY SVHC BY WEIGHT PER REACH REGULATION		CHECKED BY: MK	DATE 05/01/23		
UNLESS OTHERWISE SPECIFIED DIMENSIONS ARE IN INCHES [MM] TOLERANCES ARE: ANGLES: ± 1 ° 1 PLACE .X: ± .1 [2.5] 2 PLACE .XX: ± .03 [0.76] 3 PLACE .XXX: ± .010 [0.254]		ME APPROVED BY: DP	DATE 05/01/23	DESCRIPTION MICRONEXUS 17A 380-480V 4kHz FILTER IP20 ENCLOSED	
		RE APPROVED BY: GV	DATE 05/01/23		
 N83W12650 Stratton Cir - Suite 100 Menomonee Falls, WI 53051 USA 800.455.4683 262.253.8200		SIZE D	DWG No. CD SNUG0017D	REV 00	
		SCALE 1:2	Sheet1	SHEET 1 OF 1	