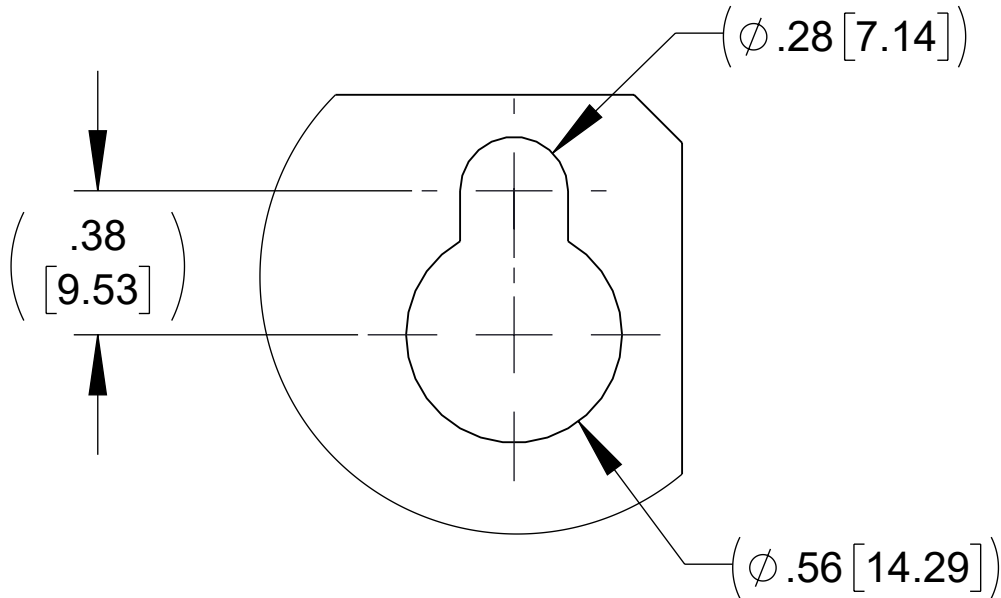
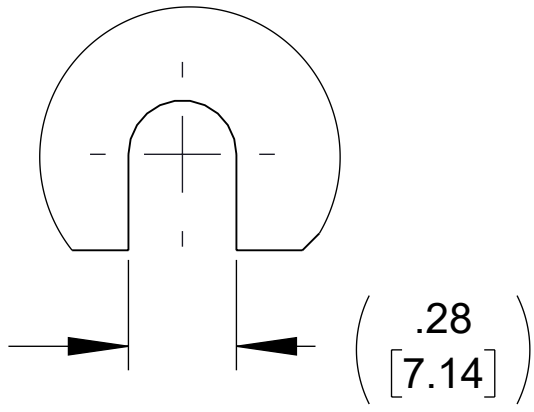


APPROX. WEIGHT
(LBS)
11

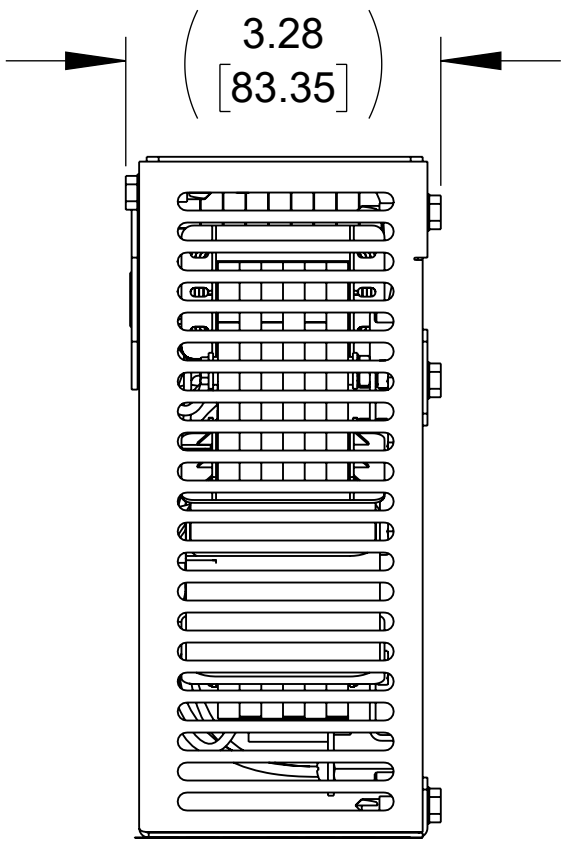
ECO No	DESCRIPTION	REV BY	DATE
M14893	CHANGED DESCRIPTION	MK	05/01/23



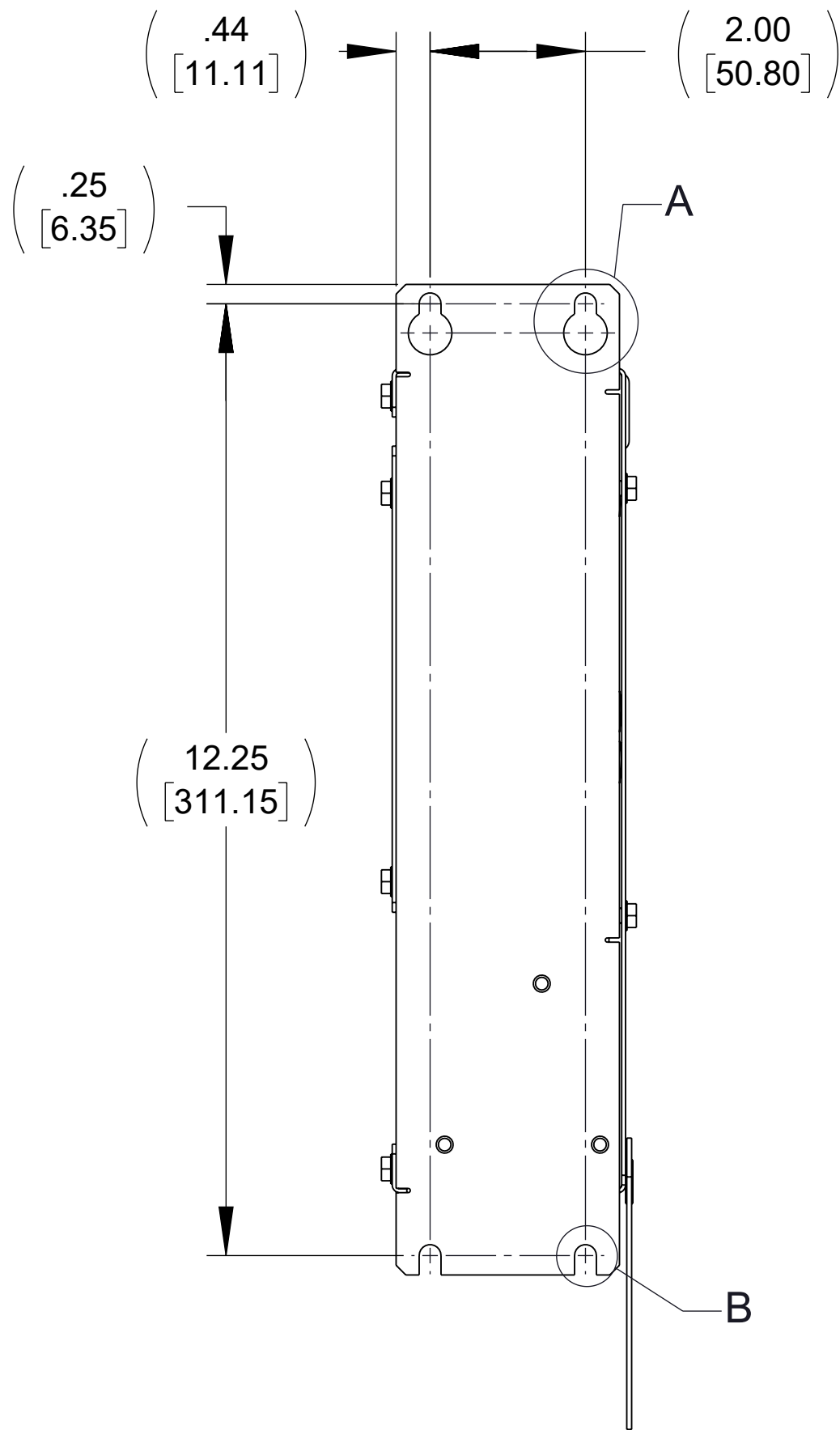
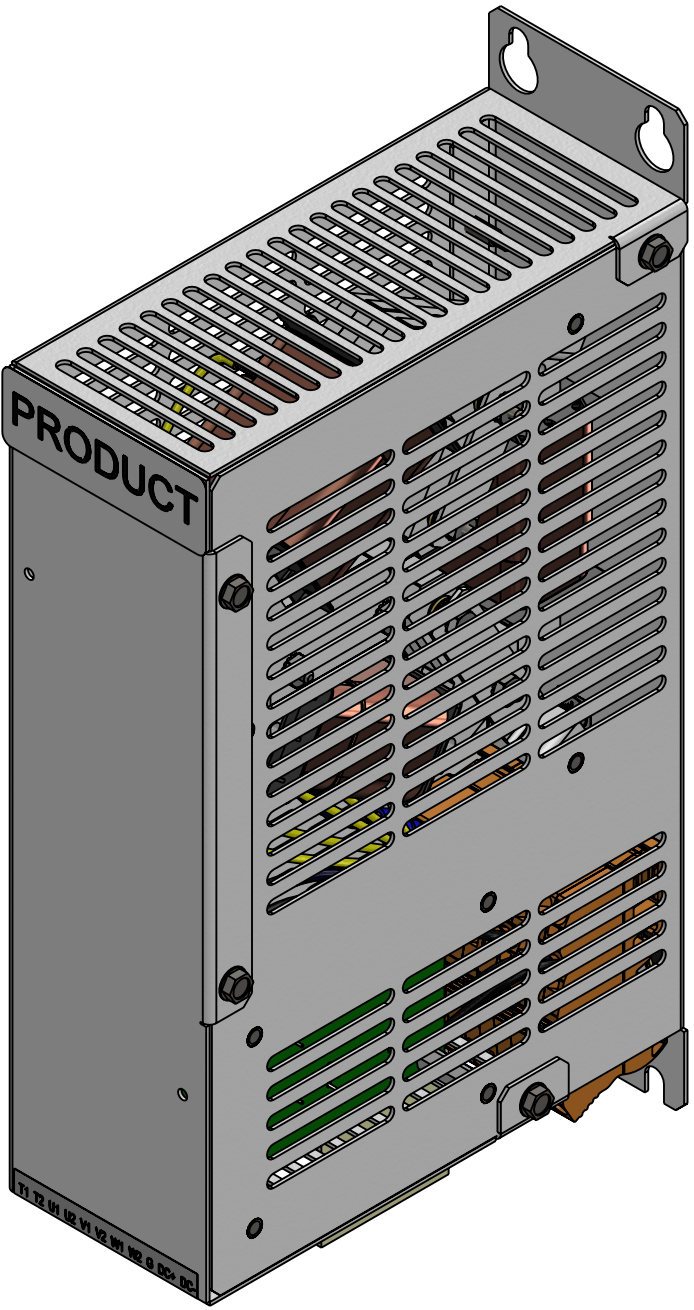
DETAIL A
(2 PLACES)



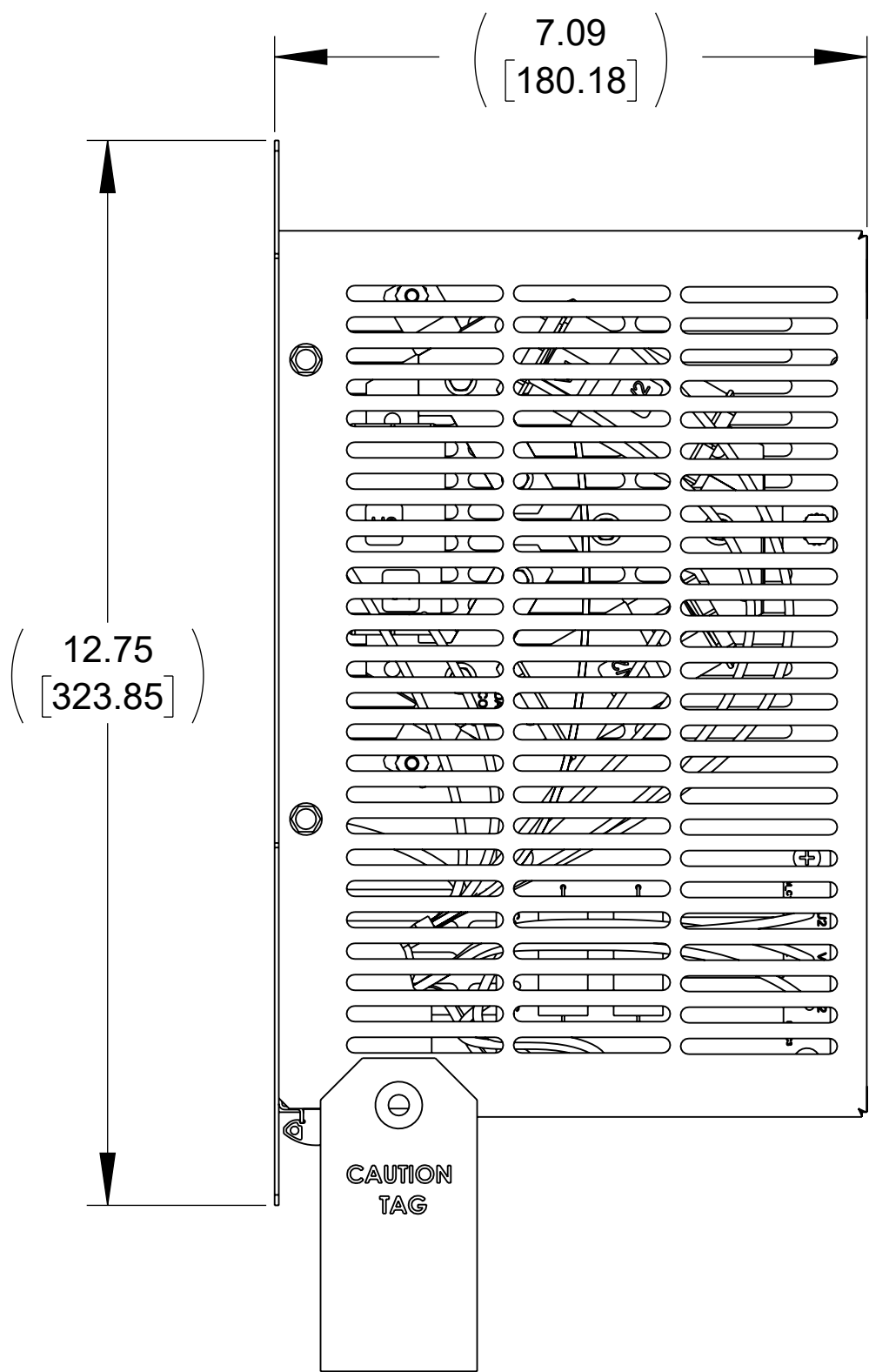
DETAIL B
(2 PLACES)



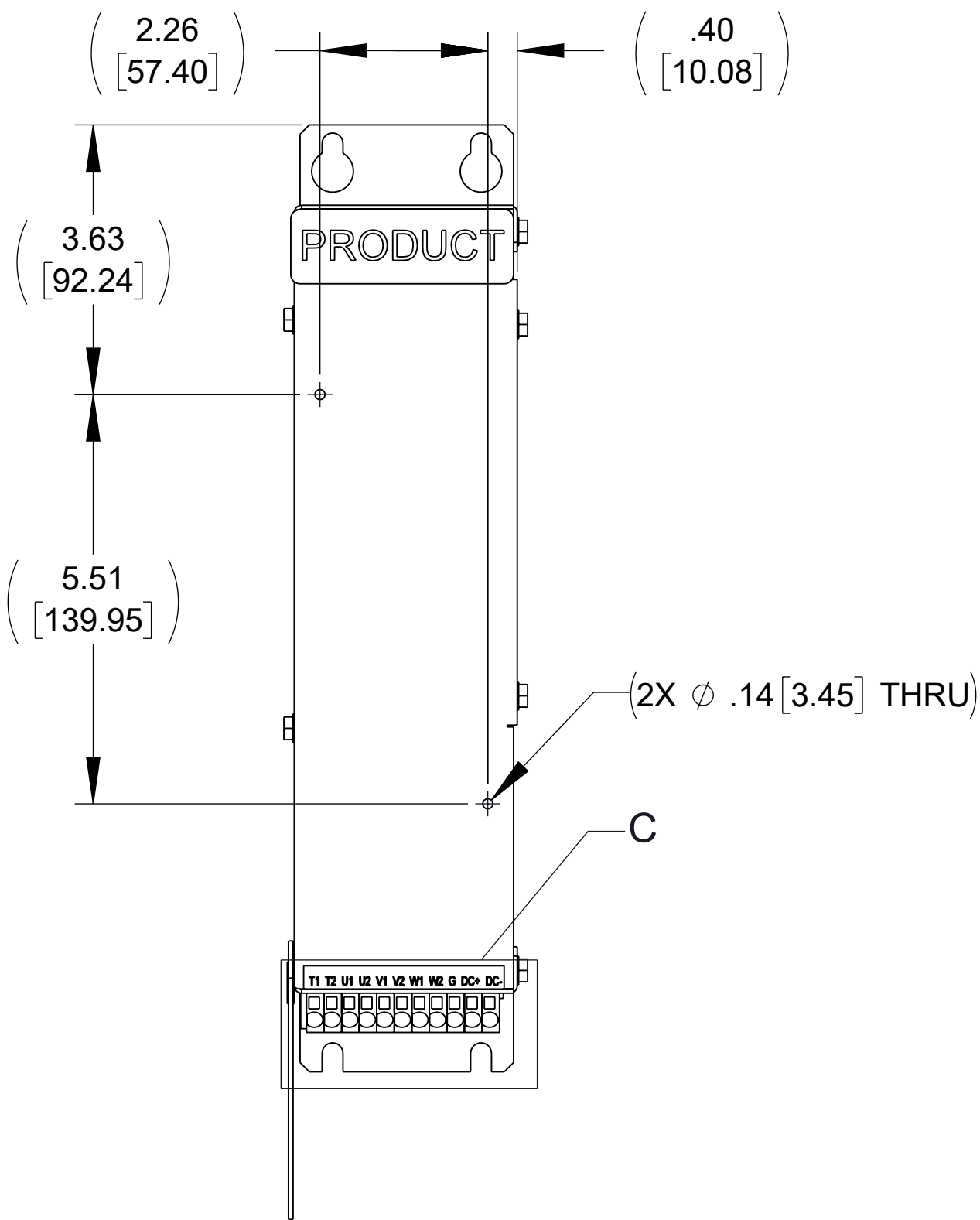
TOP VIEW



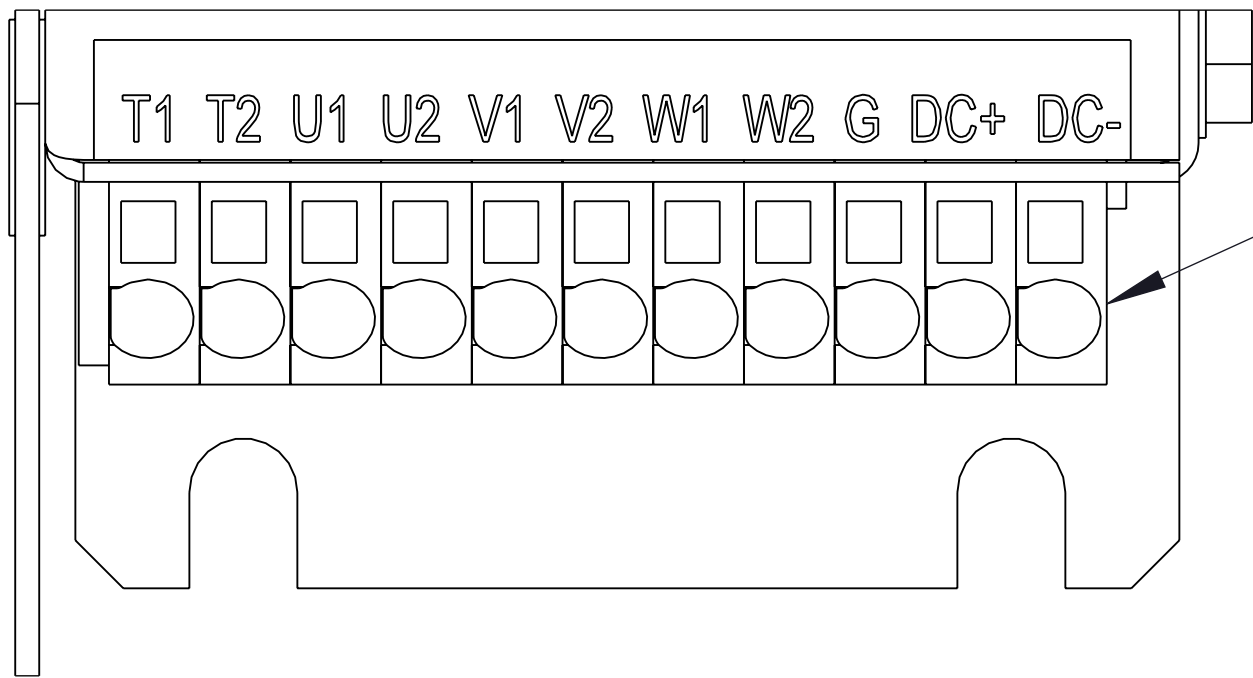
BACK VIEW



LEFT VIEW

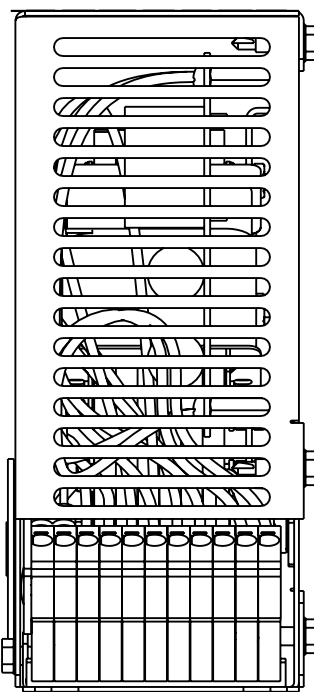


FRONT VIEW



DETAIL C
CUSTOMER CONNECTION
DETAIL VIEW

SEE NOTE 1



BOTTOM VIEW

NOTES:

1. TERMINAL WIRE RANGE: 18-14 AWG.

THE COMPONENT, PART OR ASSEMBLY DESCRIBED IN THIS DOCUMENT MUST COMPLY WITH THE EU(EUROPEAN UNION) DIRECTIVE RoHS2		DRAWN BY: CB	DATE 02/06/23	CONFIDENTIAL AND PROPRIETARY INFORMATION THIS DOCUMENT CONTAINS CONFIDENTIAL AND PROPRIETARY INFORMATION OF MTE CORPORATION AND MAY NOT BE USED, COPIED OR DISCLOSED TO OTHERS EXCEPT WITH THE AUTHORIZED WRITTEN PERMISSION OF MTE CORPORATION	
CONTAINS <0.1% OF ANY SVHC BY WEIGHT PER REACH REGULATION		CHECKED BY: MK	DATE 05/01/23		
UNLESS OTHERWISE SPECIFIED DIMENSIONS ARE IN INCHES [MM] TOLERANCES ARE: ANGLES: ± 1 ° 1 PLACE .X: ± .1 [2.5] 2 PLACE .XX: ± .03 [0.76] 3 PLACE .XXX: ± .010 [0.254]		ME APPROVED BY: DP	DATE 05/01/23	DESCRIPTION MICRONEXUS 3A 380-480V 4kHz FILTER IP20 ENCLOSED	
		RE APPROVED BY: GV	DATE 05/01/23		
				SIZE D	DWG No. CD SNUG0003D
				SCALE 1:2	REV 01
				Sheet1	
				SHEET 1 OF 1	



N83W12650 Stratton Cir - Suite 100
Menomonee Falls, WI 53051 USA
800.425.4683
262.253.8200