

APPROX. WEIGHT (LBS)
989

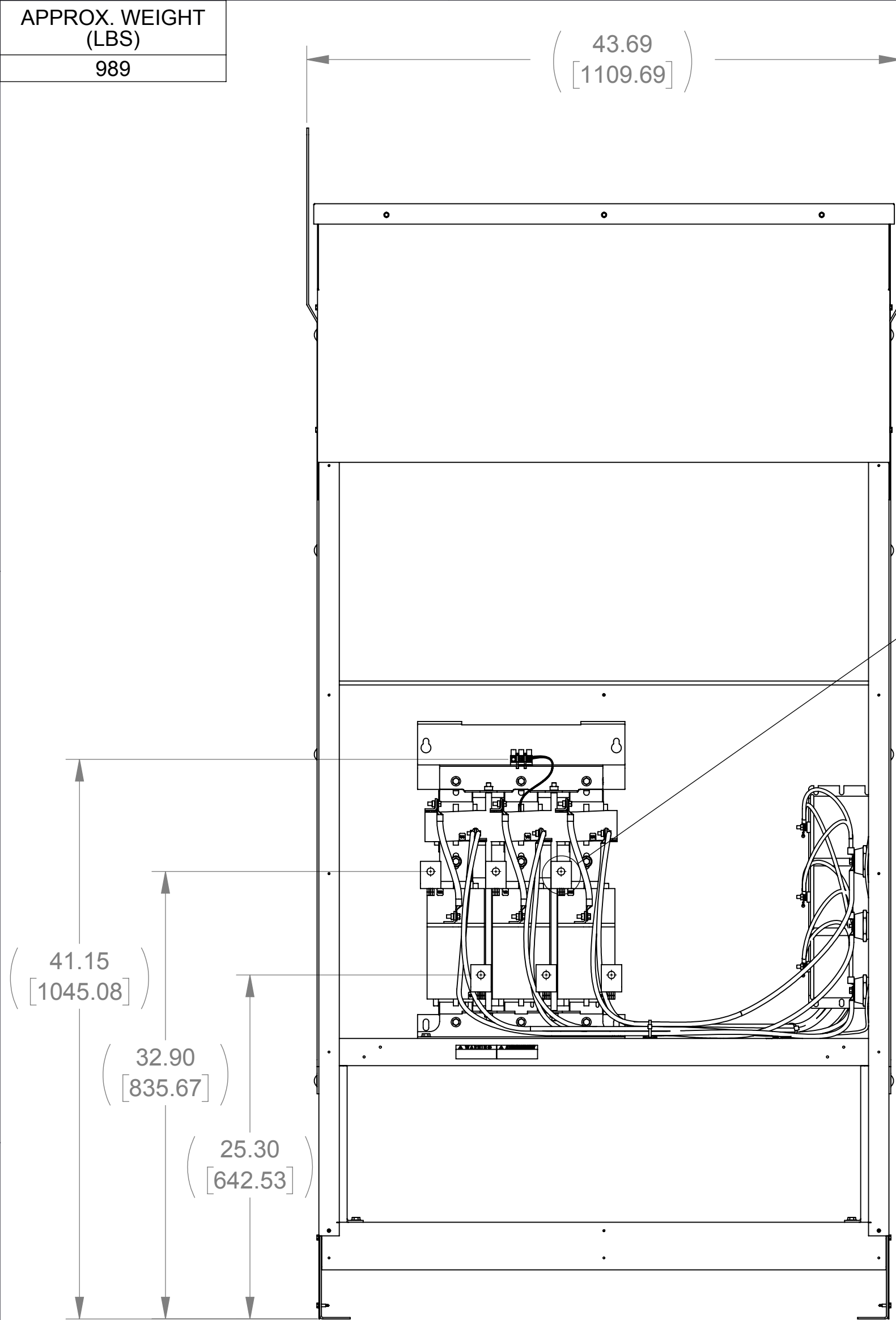
ECO No	DESCRIPTION	REV BY	DATE
M9777	CHANGED CAPPANEL-544 TO 544C	MN	03/21/16

D

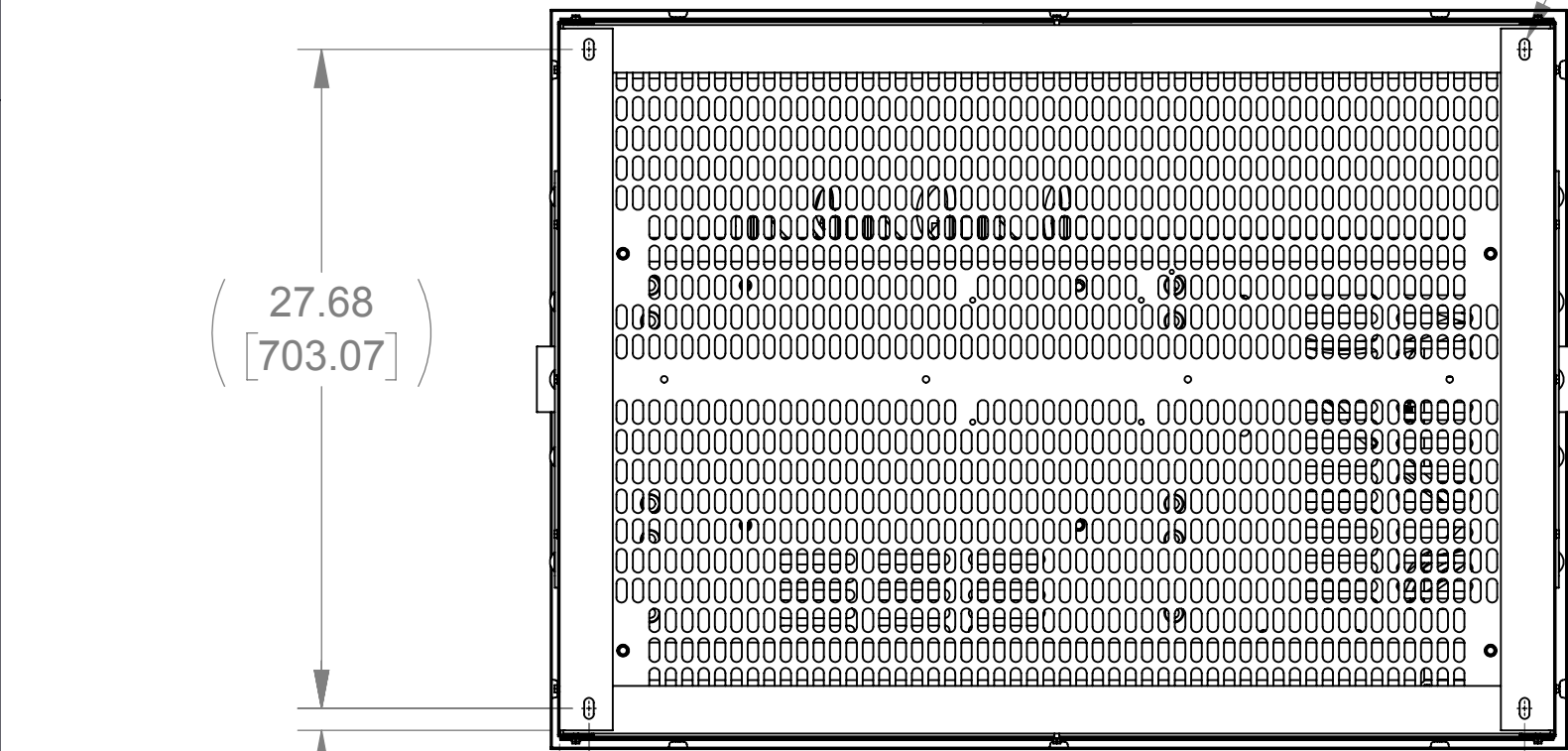
C

B

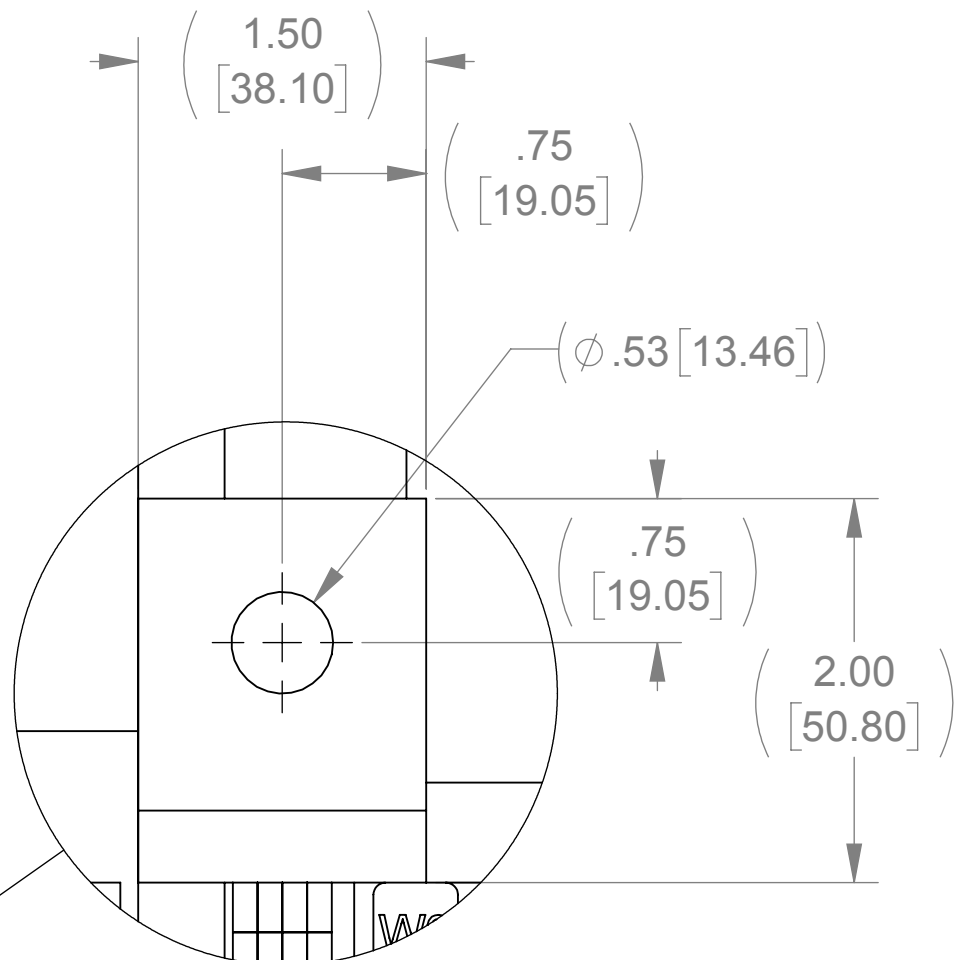
A



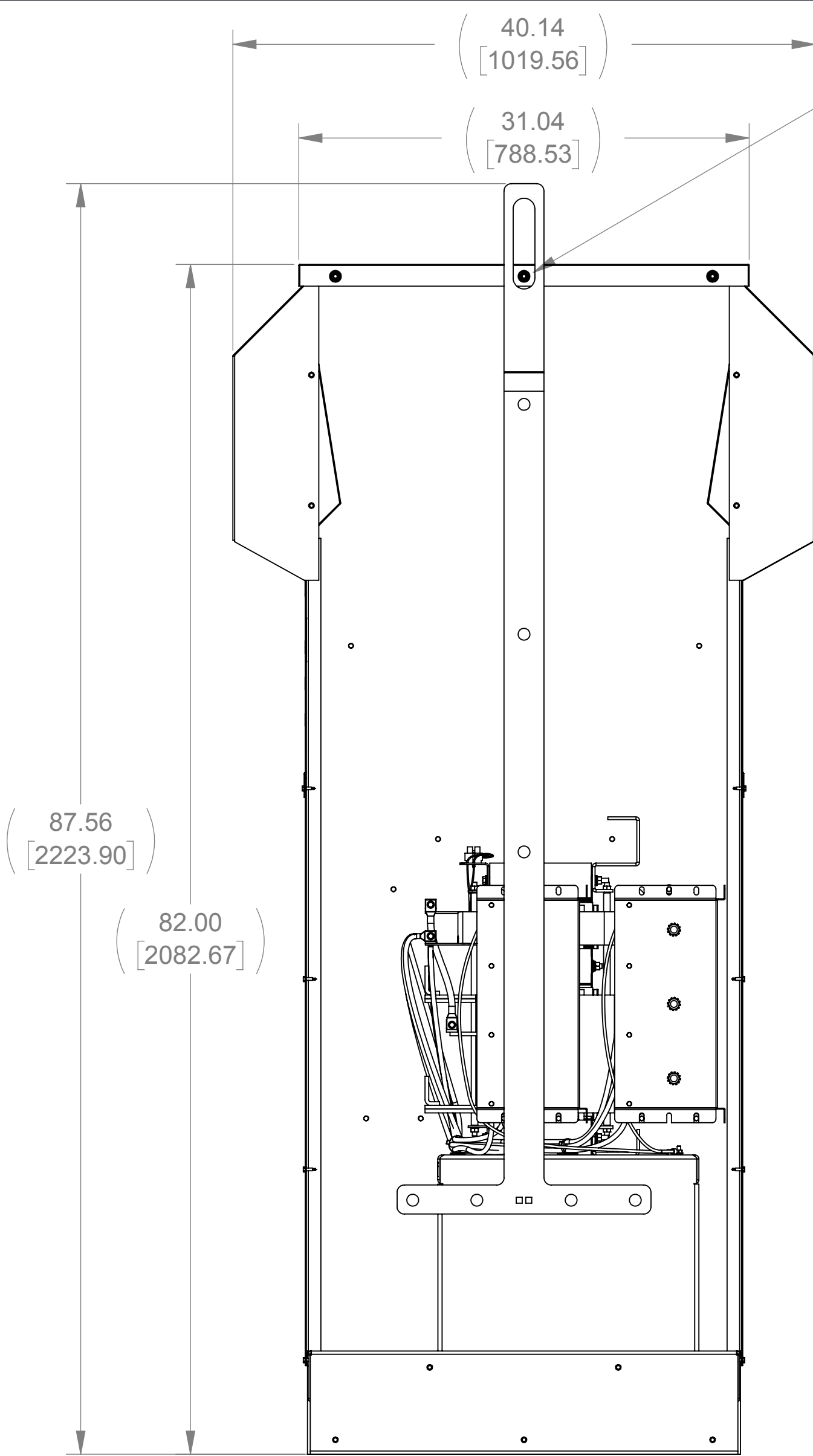
FRONT VIEW
(PANELS REMOVED)



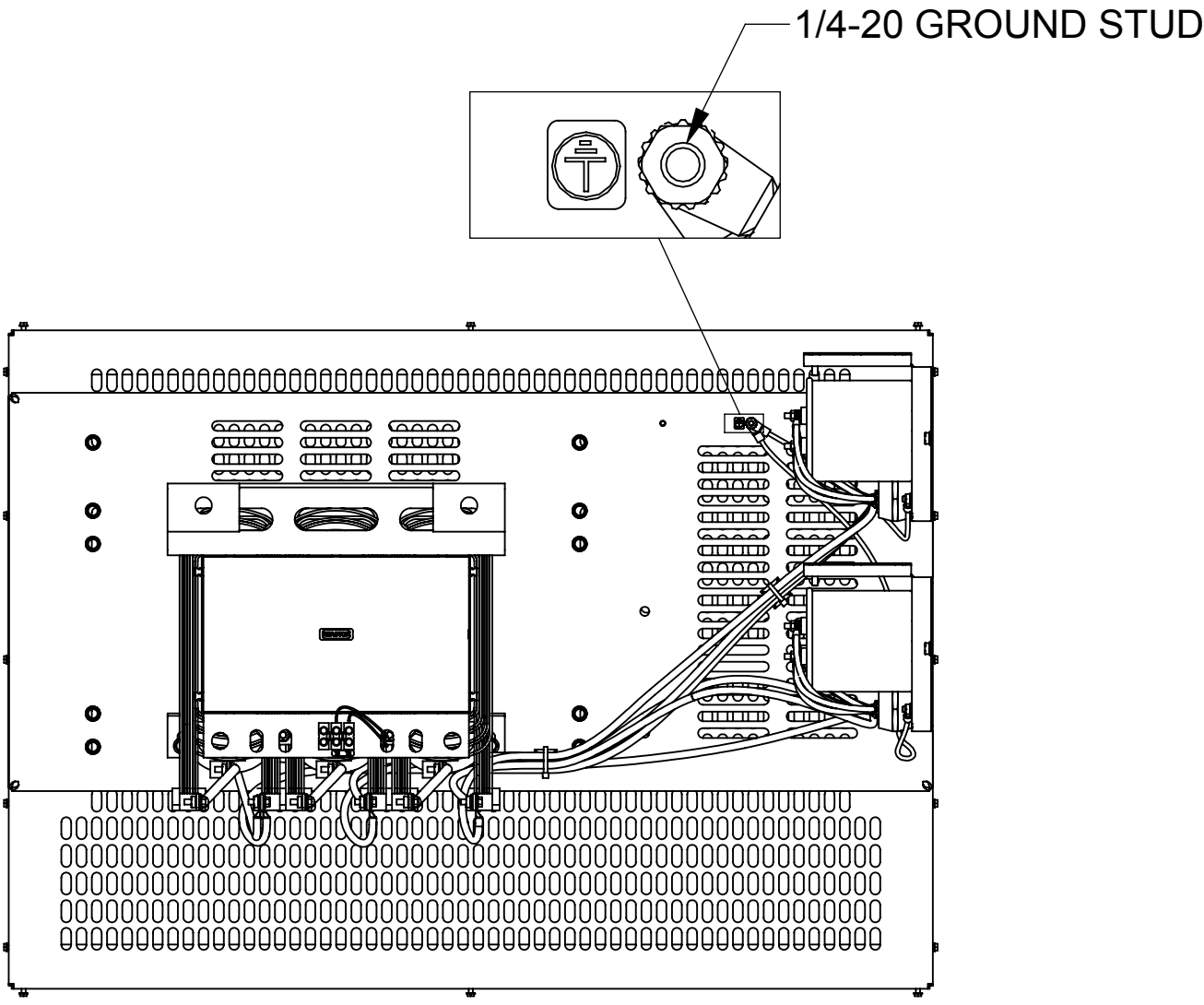
BOTTOM VIEW



DETAIL A
(6 PLACES)

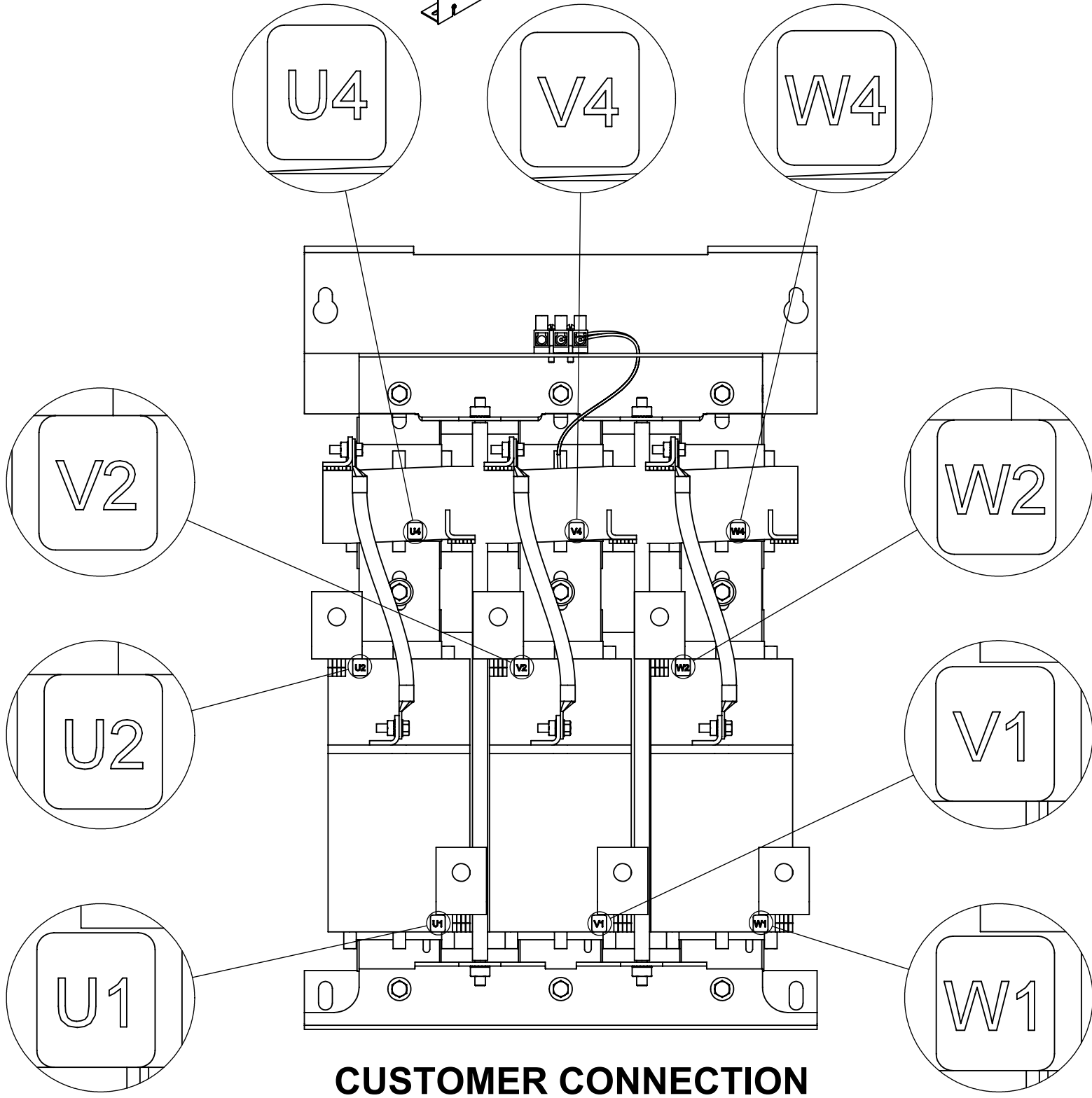
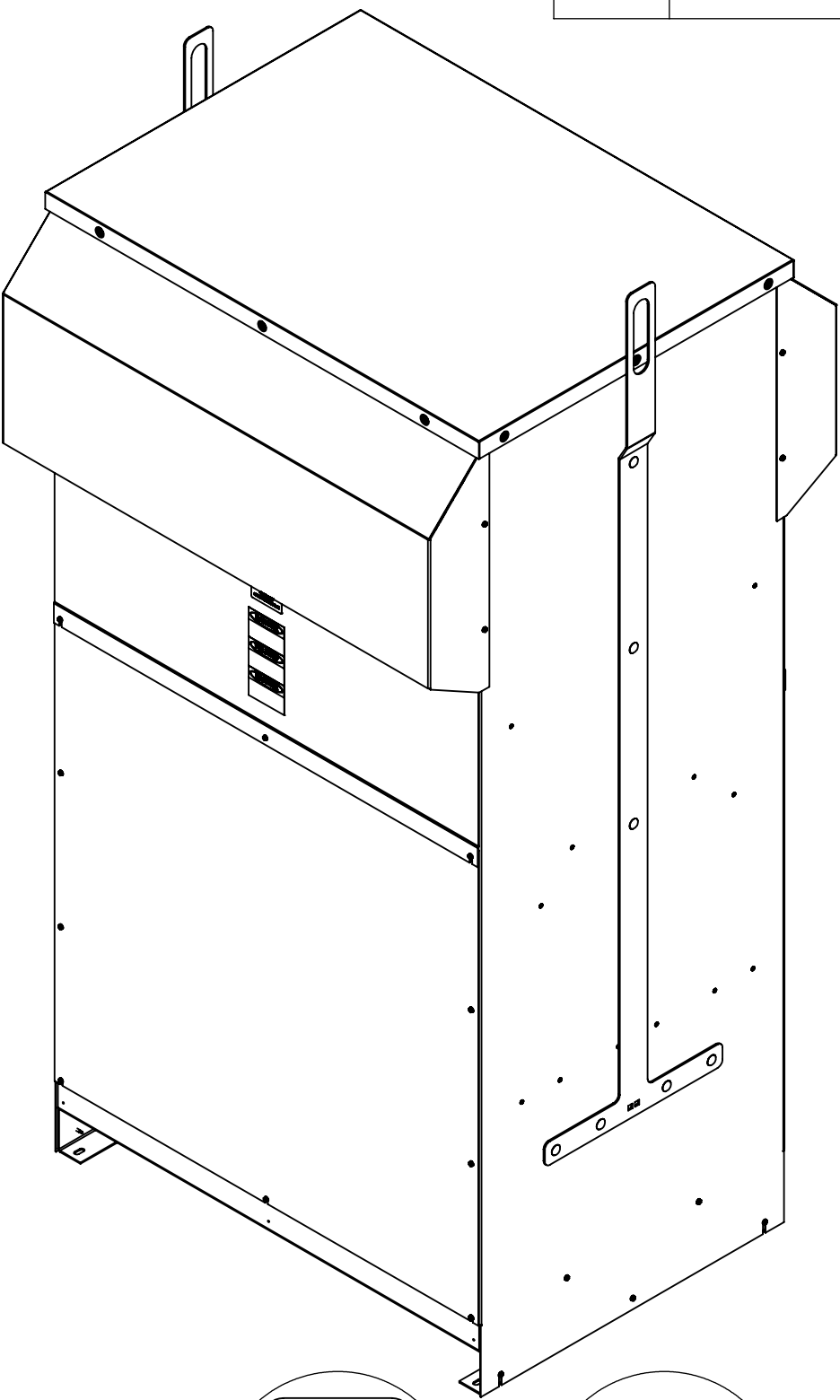


SIDE VIEW
(PANELS REMOVED)



TOP VIEW
(PANELS REMOVED)


(Ø 1.50 [38.10] X 6.50 [165.10])
SLOT, 2 PLACES



CUSTOMER CONNECTION
DETAIL VIEW

NOTES:

1. TERMINAL SCREW TIGHTENING TORQUE: 16 IN/LBS.
2. WIRE RANGE: 4 - 14 AWG

THE COMPONENT, PART OR ASSEMBLY DESCRIBED IN THIS DOCUMENT MUST COMPLY WITH THE EU(EUROPEAN UNION) DIRECTIVE RoHS2		MATERIAL		CONFIDENTIAL AND PROPRIETARY INFORMATION THIS DOCUMENT CONTAINS CONFIDENTIAL AND PROPRIETARY INFORMATION OF MTE CORPORATION AND MAY NOT BE USED, COPIED OR DISCLOSED TO OTHERS EXCEPT WITH THE AUTHORIZED WRITTEN PERMISSION OF MTE CORPORATION			
CONTAINS <0.1% OF ANY SVHC BY WEIGHT PER REACH REGULATION				DESCRIPTION			
<div>UNLESS OTHERWISE SPECIFIED DIMENSIONS ARE IN INCHES [MM] TOLERANCES ARE:</div> <div>ANGLES: ± 1 °</div> <div>1 PLACE .X: ± .1 [2.5]</div> <div>2 PLACE .XX: ± .03 [0.76]</div> <div>3 PLACE .XXX: ± .010 [0.254]</div> <div><div><div>AN BL POWER ELECTRONICS COMPANY</div></div><div>N83 W13330 Leon Road Menomonee Falls, WI 53051 USA 800.455-4683 262.253-8200</div></div> <td><div>DRAWN</div><div>JS</div></td> <td><div>DATE</div><div>1/12/12</div></td> <td colspan="4" rowspan="3"><div>MATRIX AP 482A 480V 60HZ FILTER, NEMA 3R ENCL</div></td>		<div>DRAWN</div> <div>JS</div>	<div>DATE</div> <div>1/12/12</div>	<div>MATRIX AP 482A 480V 60HZ FILTER, NEMA 3R ENCL</div>			
		<div>CHECKED</div> <div>JM</div>	<div>DATE</div> <div>04/18/16</div>				
		<div>APPROVED</div> <div>JM</div>	<div>DATE</div> <div>04/18/16</div>				
				<div>SIZE</div> <div>D</div>	<div>DWG No.</div> <div>CD MAPW0482D</div>	<div>REV</div> <div>07</div>	
		<div>SCALE</div> <div>1:8</div>			<div>SHEET 1 OF 1</div>		