

APPROX. WEIGHT (LBS)
764

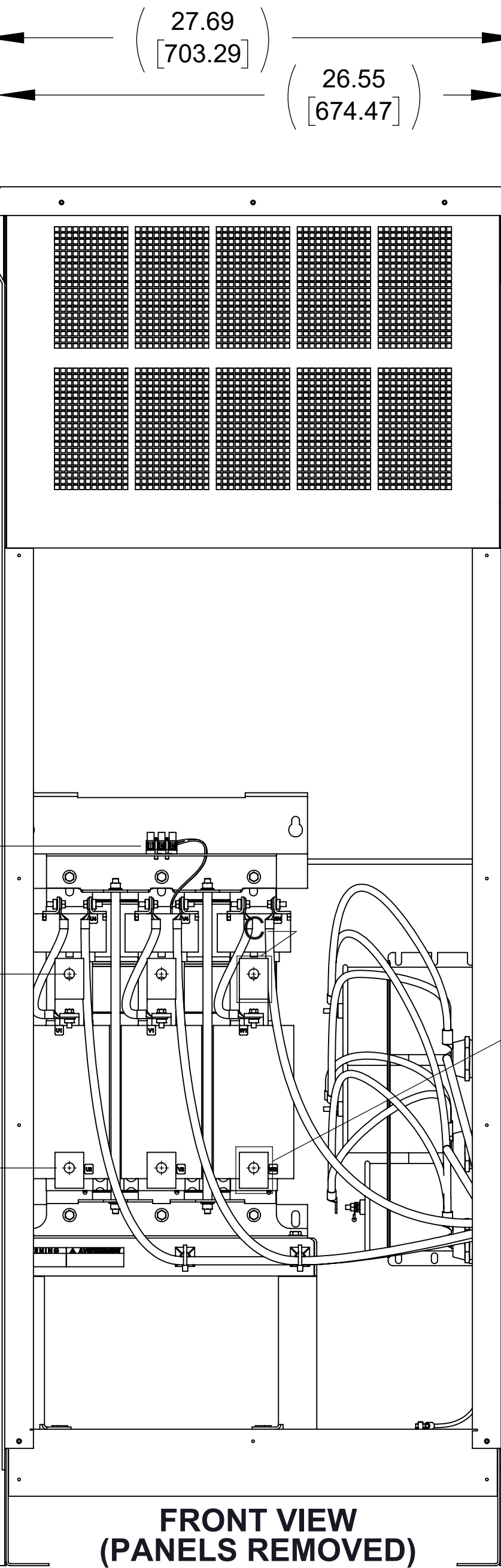
ECO No	DESCRIPTION	REV BY	DATE
M12784	UPDATE TO MODIFIED CAB-26APD & UPDATE FORMAT	MN	03/25/20

D

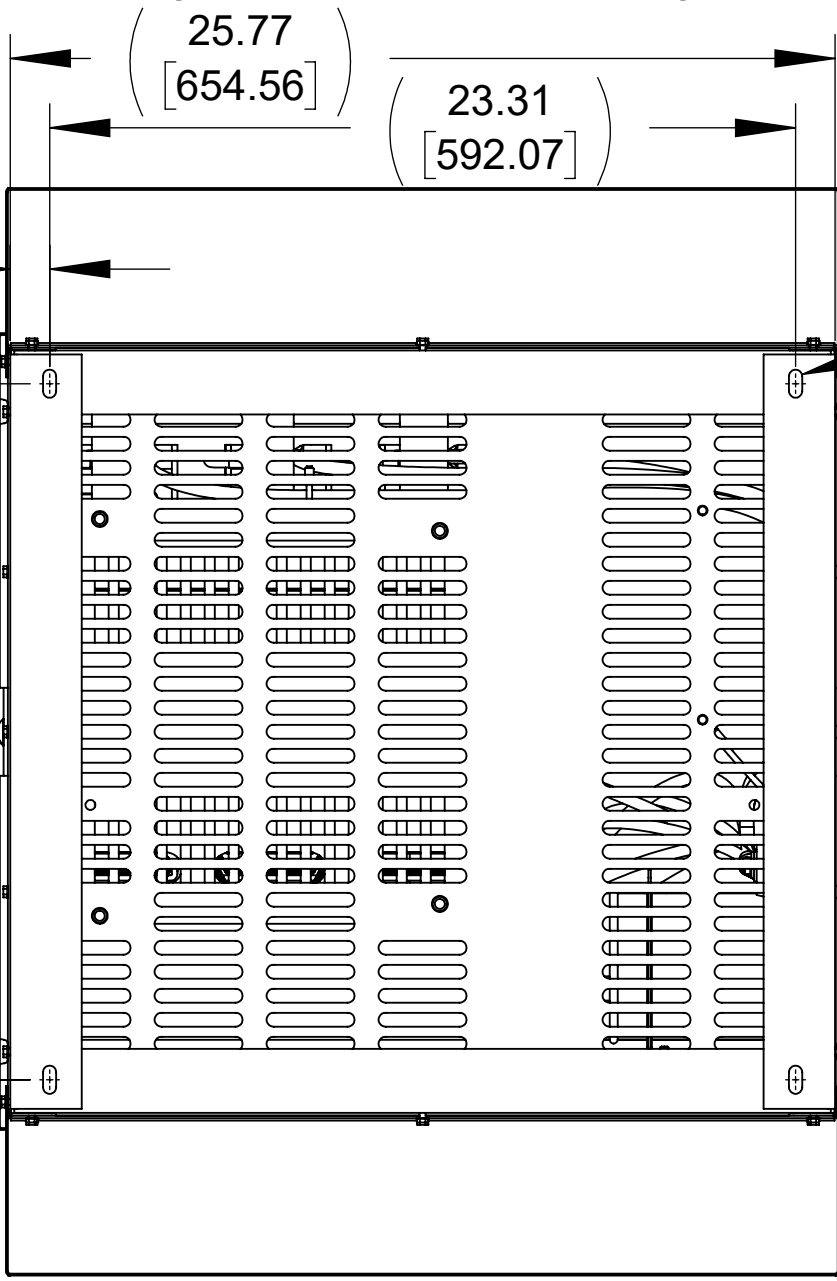
C

B

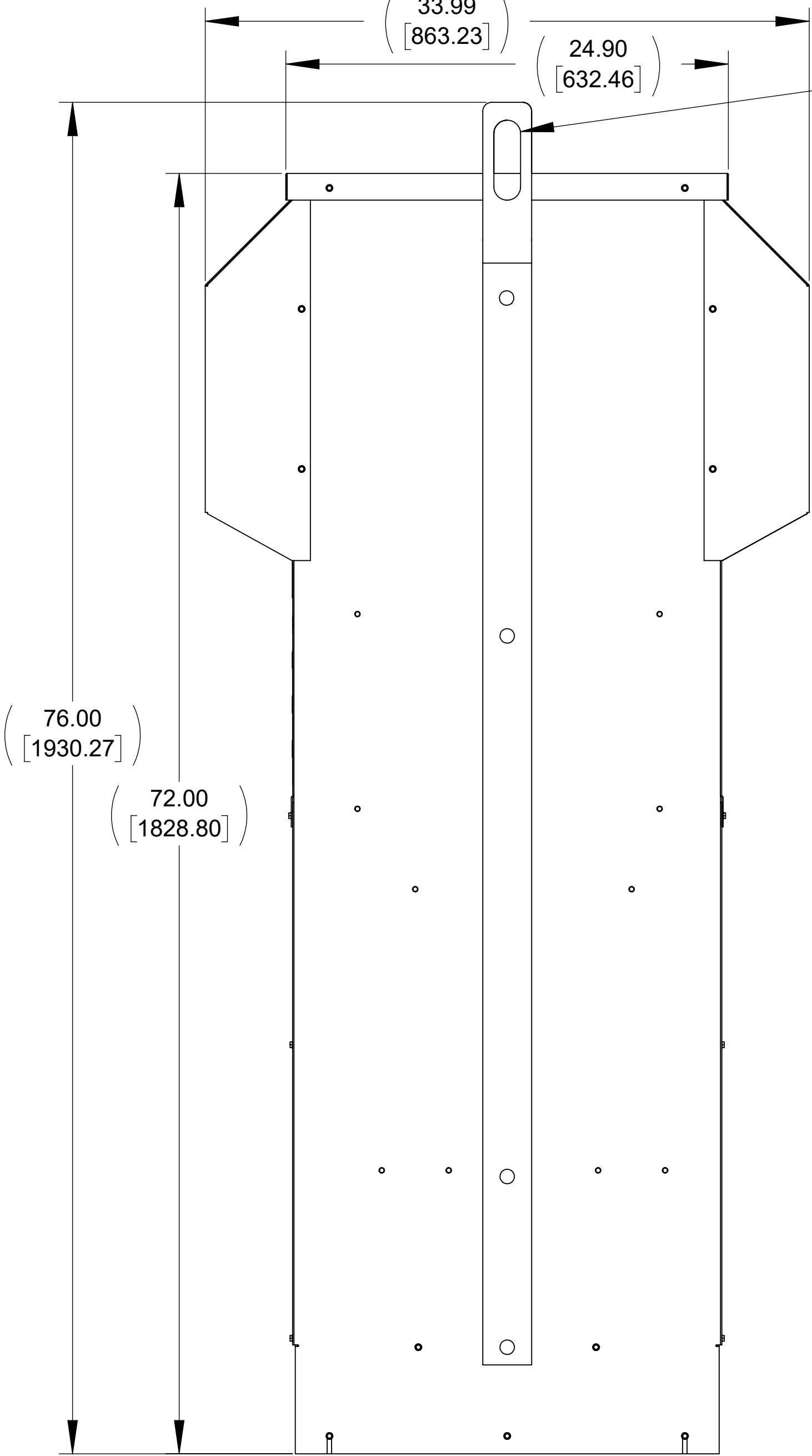
A



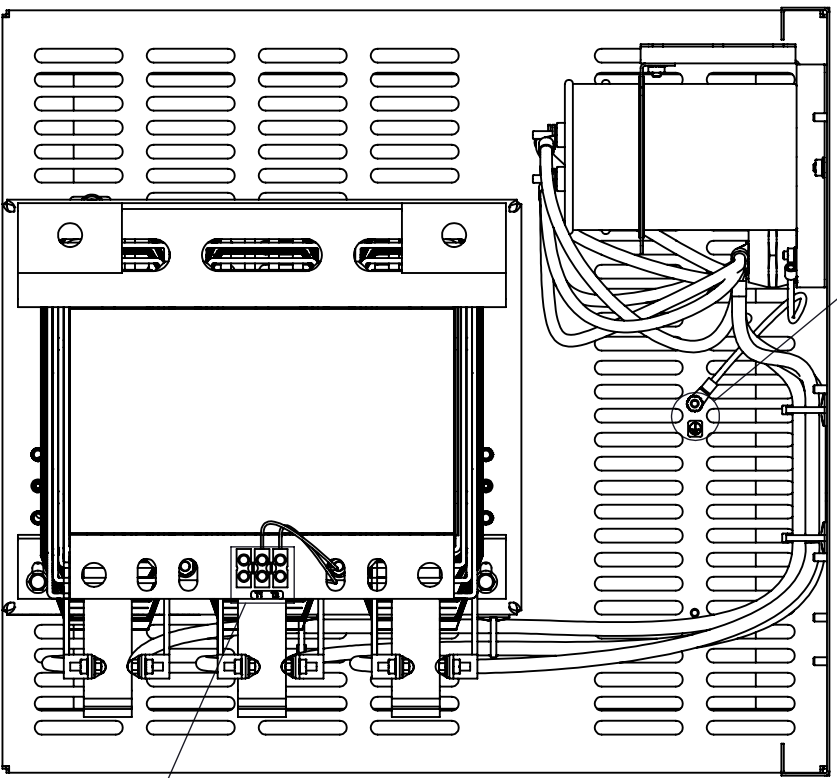
FRONT VIEW
(PANELS REMOVED)



BOTTOM VIEW

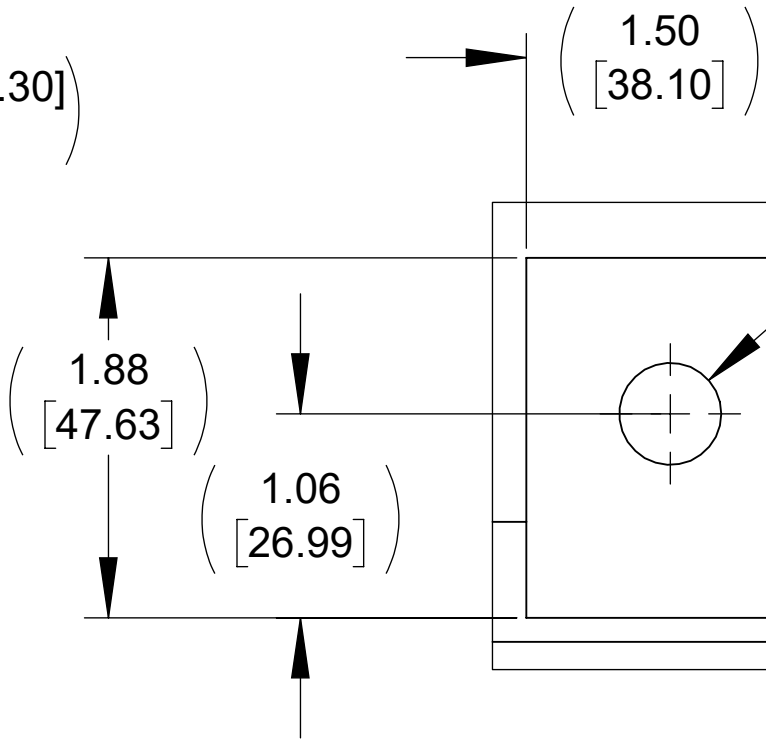


SIDE VIEW

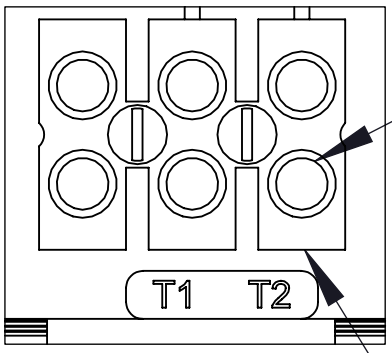


TOP VIEW
(PANELS REMOVED)

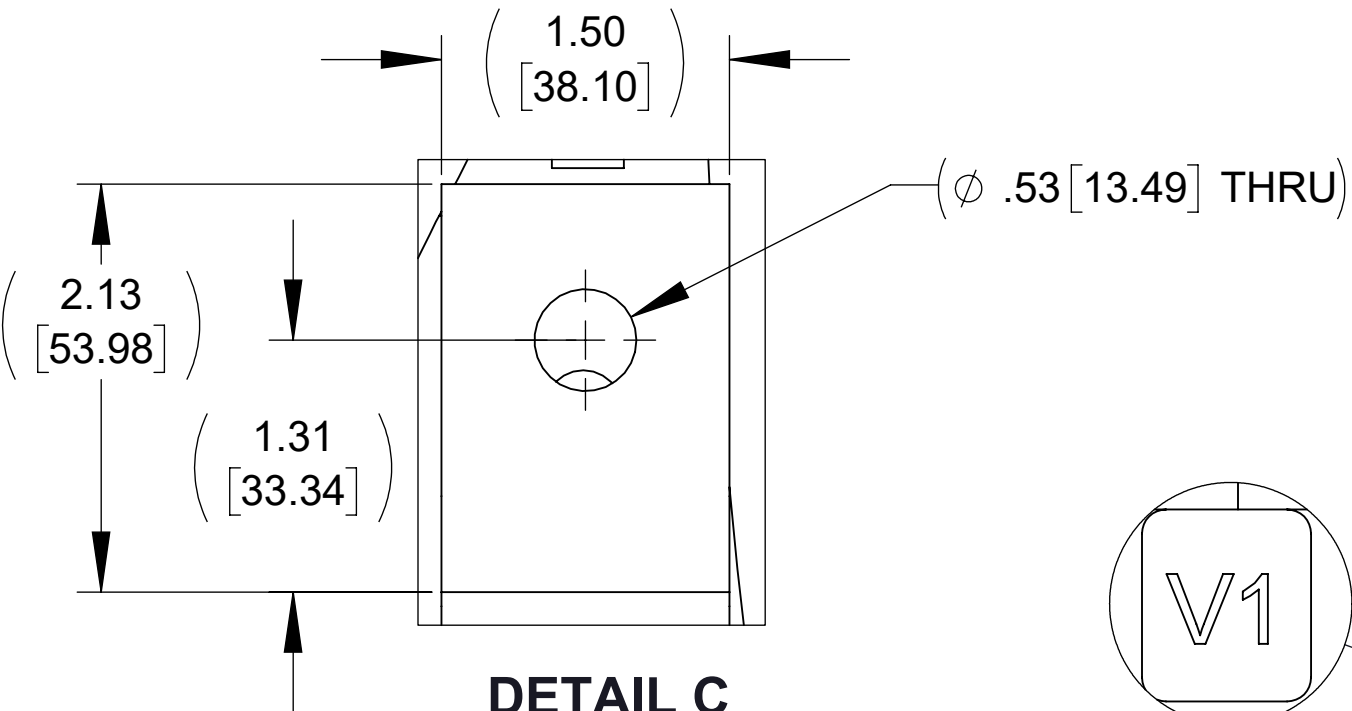
(ϕ 1.50 [38.10] X 4.50 [114.30]
SLOT, 2 PLACES)



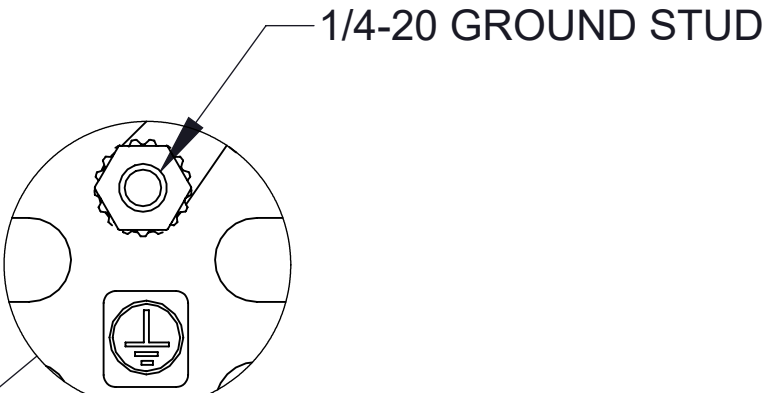
DETAIL A
(3 PLACES)



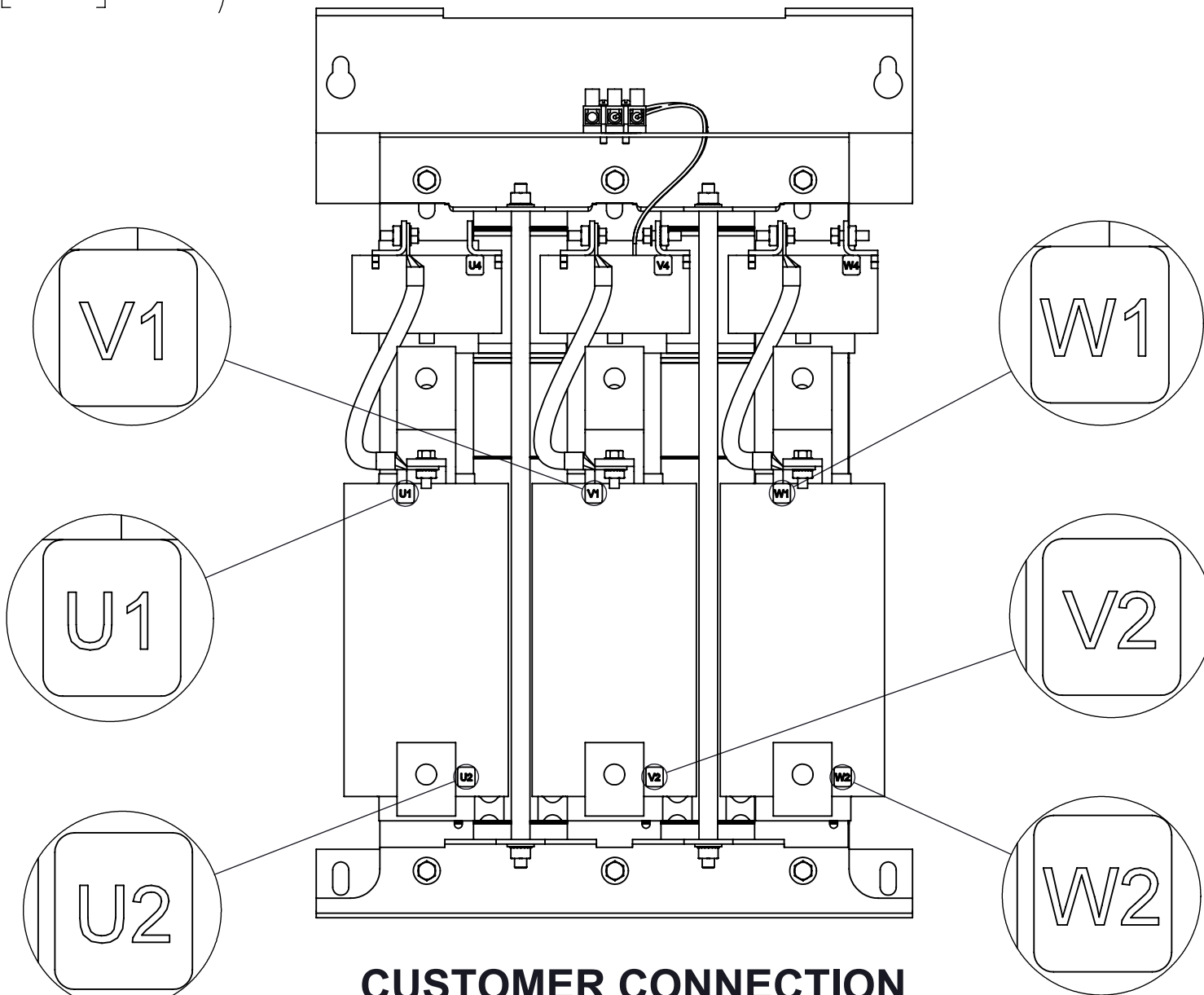
DETAIL B
CUSTOMER CONNECTION
DETAIL VIEW (THERMAL)



DETAIL C
(3 PLACES)




DETAIL D



CUSTOMER CONNECTION
DETAIL VIEW

NOTES:

1. TERMINAL WIRE RANGE: 4-14 AWG.
2. TERMINAL SCREW TIGHTENING TORQUE: 16 IN/LBS.
3. REFER TO USER MANUAL FOR COMPLETE INSTALLATION INSTRUCTIONS.

THE COMPONENT, PART OR ASSEMBLY DESCRIBED IN THIS DOCUMENT MUST COMPLY WITH THE EU(EUROPEAN UNION) DIRECTIVE RoHS2		MATERIAL		CONFIDENTIAL AND PROPRIETARY INFORMATION THIS DOCUMENT CONTAINS CONFIDENTIAL AND PROPRIETARY INFORMATION OF MTE CORPORATION AND MAY NOT BE USED, COPIED OR DISCLOSED TO OTHERS EXCEPT WITH THE AUTHORIZED WRITTEN PERMISSION OF MTE CORPORATION			
CONTAINS <0.1% OF ANY SVHC BY WEIGHT PER REACH REGULATION				DESCRIPTION			
<div>UNLESS OTHERWISE SPECIFIED DIMENSIONS ARE IN INCHES [MM] TOLERANCES ARE:</div> <div>ANGLES: ± 1 °</div> <div>1 PLACE .X: ± .1 [2.5]</div> <div>2 PLACE .XX: ± .03 [0.76]</div> <div>3 PLACE .XXX: ± .010 [0.254]</div> <div><div>N83 W13330 Leon Road Menomonee Falls, WI 53051 USA 800.455-4683 262.253.8200</div></div>		DRAWN	DATE	MATRIX AP 320A 600V 60HZ FILTER, NEMA 3R ENCL			
		SU	05/13/13				
		CHECKED	DATE				
		MN	03/25/20				
		APPROVED	DATE	SIZE	DWG No.	REV	
		PY	03/26/20	D	CD MAPW0320E	06	
				SCALE	1:6	SHEET 1 OF 1	