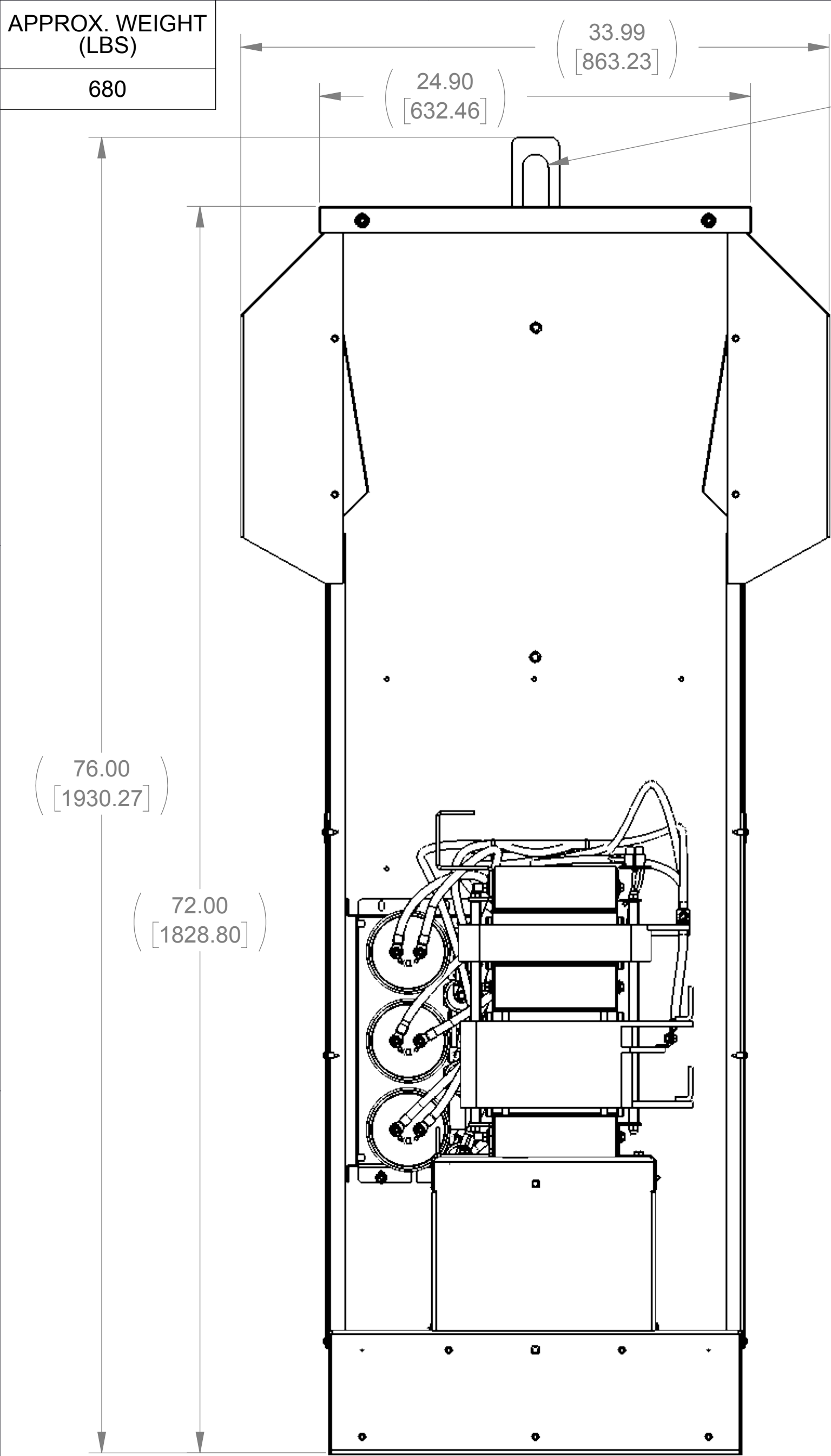
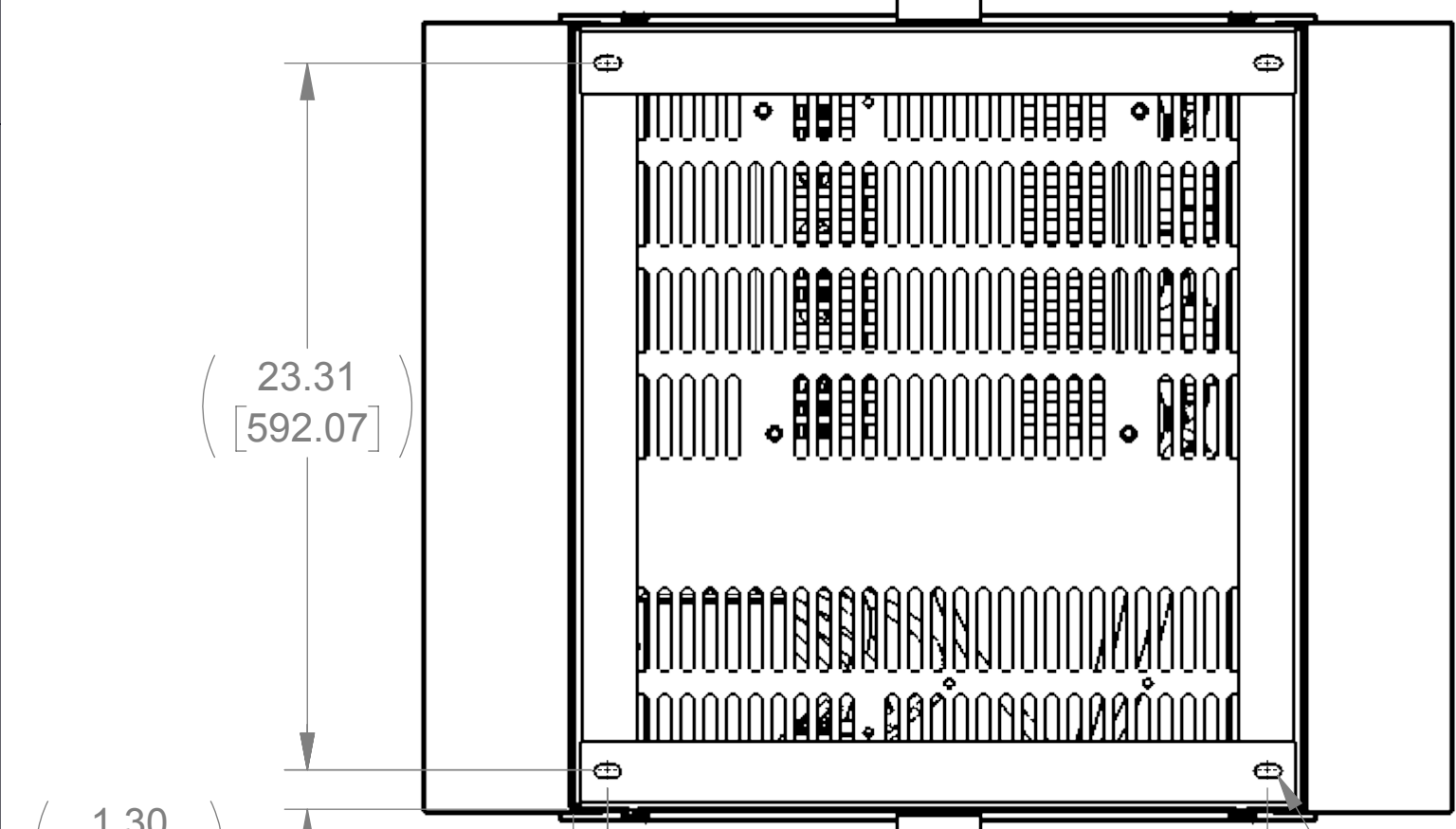


APPROX. WEIGHT  
(LBS)

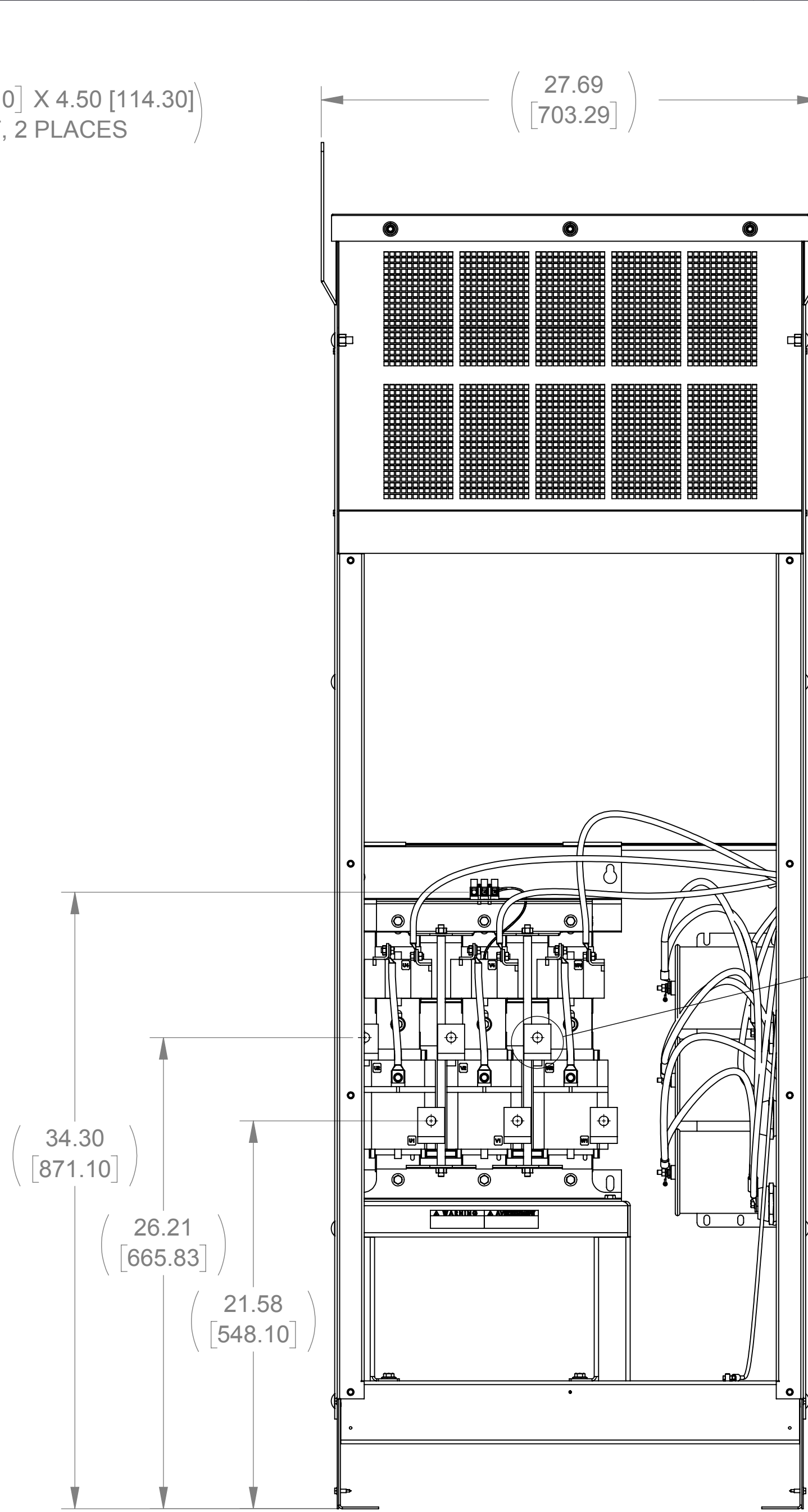
680



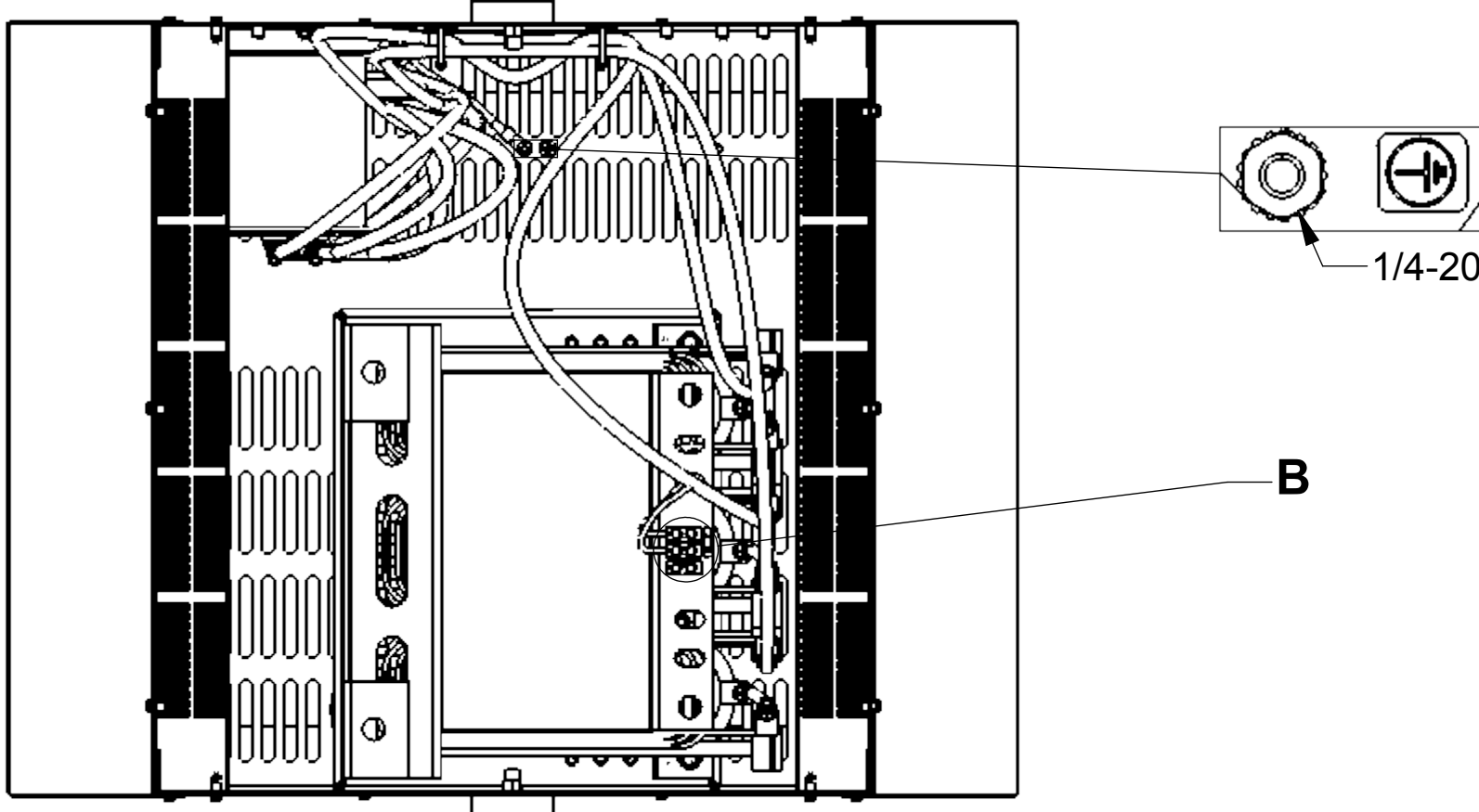
LEFT SIDE VIEW  
(PANEL REMOVED)



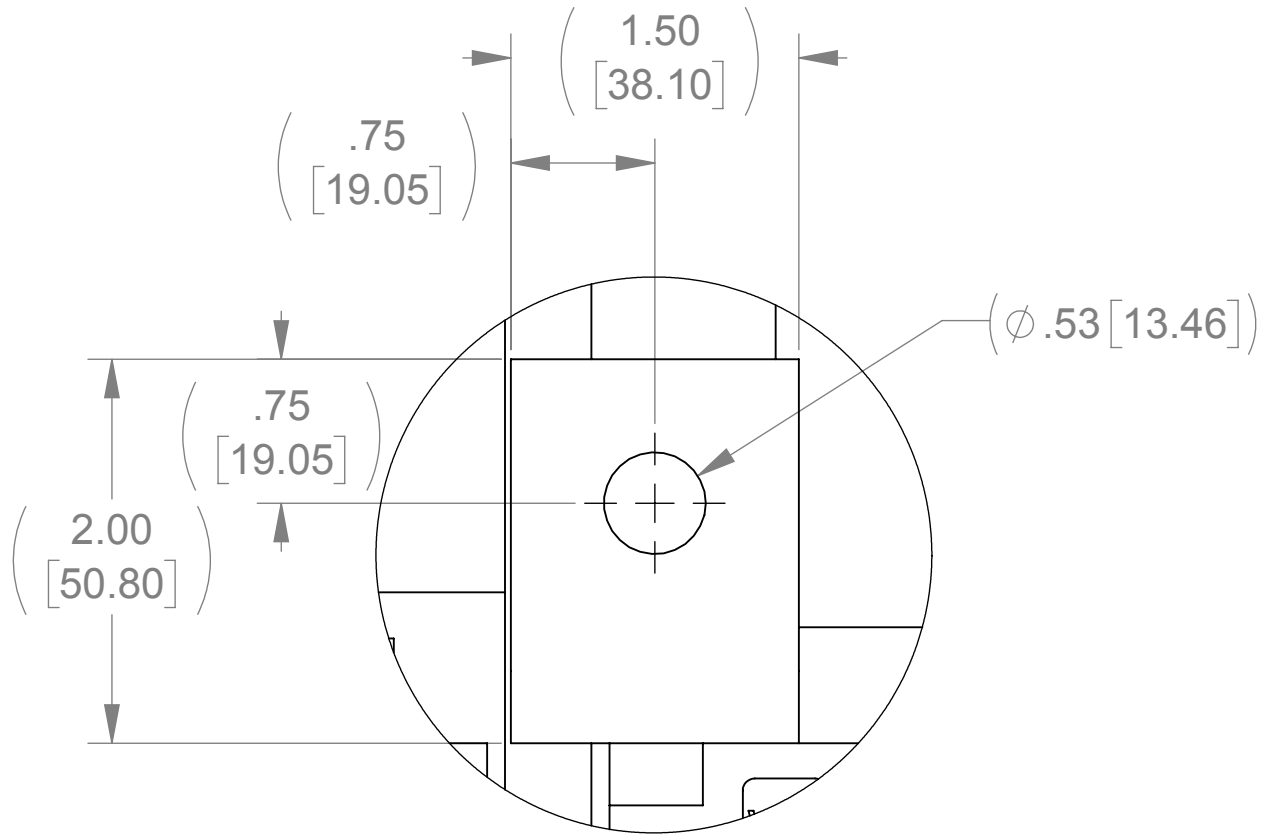
BOTTOM VIEW



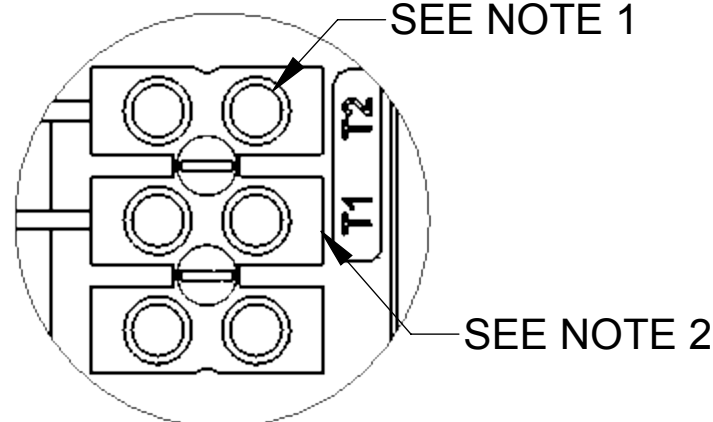
FRONT VIEW  
(FRONT PANEL REMOVED)



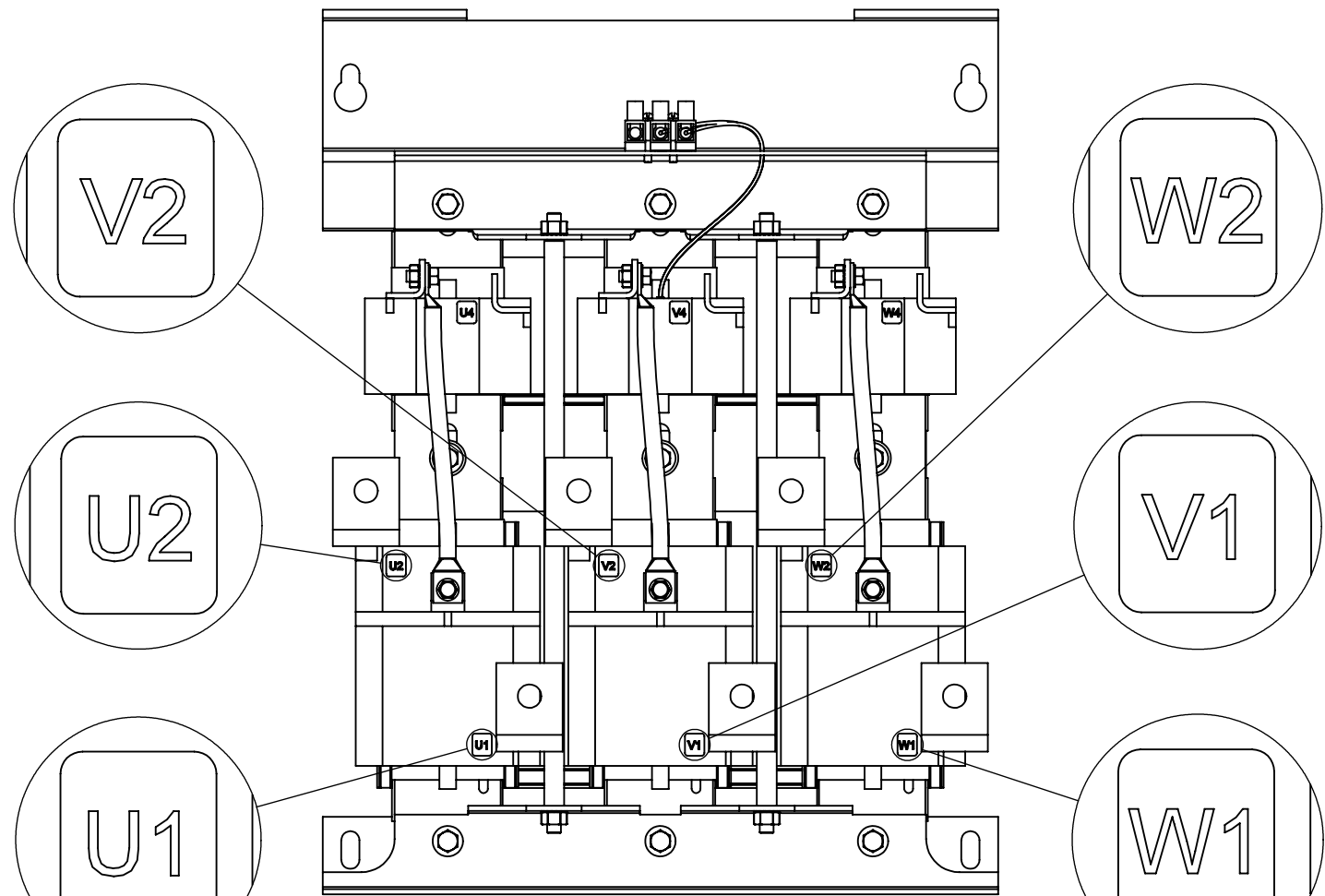
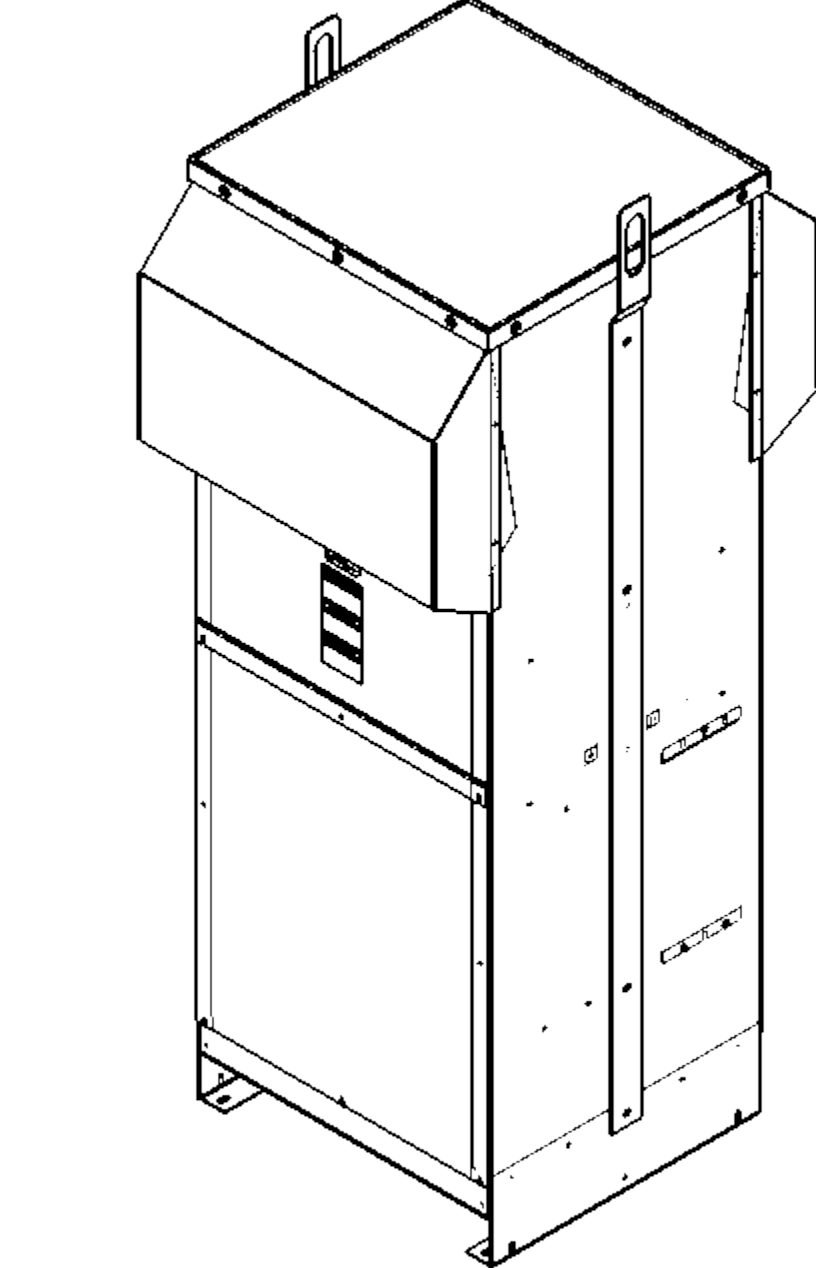
TOP VIEW  
(PANEL REMOVED)



DETAIL A  
(6 PLACES)



DETAIL B  
CUSTOMER CONNECTION  
DETAIL VIEW (THERMAL)



CUSTOMER CONNECTION  
DETAIL VIEW

NOTE:  
1. TERMINAL SCREW TIGHTENING TORQUE: 16 IN/LBS.  
2. WIRE RANGE: 4-14 AWG.

THE COMPONENT, PART OR ASSEMBLY DESCRIBED IN THIS DOCUMENT MUST COMPLY WITH THE EU (EUROPEAN UNION) DIRECTIVE RoHS2		MATERIAL		CONFIDENTIAL AND PROPRIETARY INFORMATION THIS DOCUMENT CONTAINS CONFIDENTIAL AND PROPRIETARY INFORMATION OF MTE CORPORATION AND MAY NOT BE USED, COPIED OR DISCLOSED TO OTHERS EXCEPT WITH THE AUTHORIZED WRITTEN PERMISSION OF MTE CORPORATION	
CONTAINS <0.1% OF ANY SVHC BY WEIGHT PER REACH REGULATION				DESCRIPTION	
UNLESS OTHERWISE SPECIFIED DIMENSIONS ARE IN INCHES [MM] TOLERANCES ARE: ANGLES: ± 1 ° 1 PLACE .X: ± .1 [2.5] 2 PLACE .XX: ± .03 [0.76] 3 PLACE .XXX: ± .010 [0.254]		<b>MTE</b> AN BL POWER ELECTRONICS COMPANY N83 W13330 Leon Road Menomonee Falls, WI 53051 USA 800.455.4683 262.253.8200		MATRIX AP 320A 480V 60HZ FILTER, NEMA 3R ENCLOSURE	
		DRAWN SG	DATE 08/25/11	SIZE D	DWG No. CD MAPW0320D
		CHECKED JM	DATE 03/21/16	REV 03	
		APPROVED JM	DATE 03/21/16	SCALE 1:6	SHEET 1 OF 1