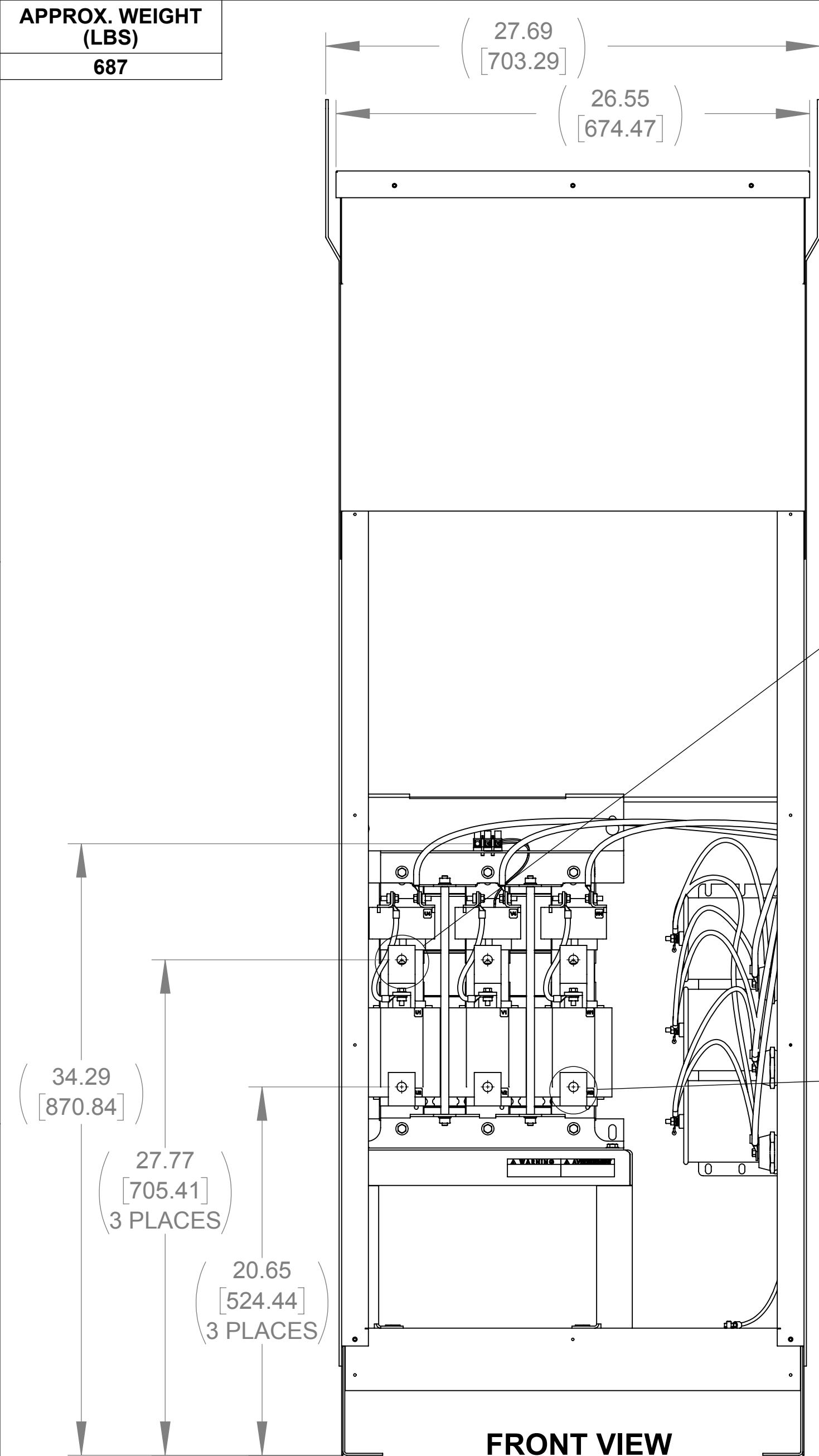
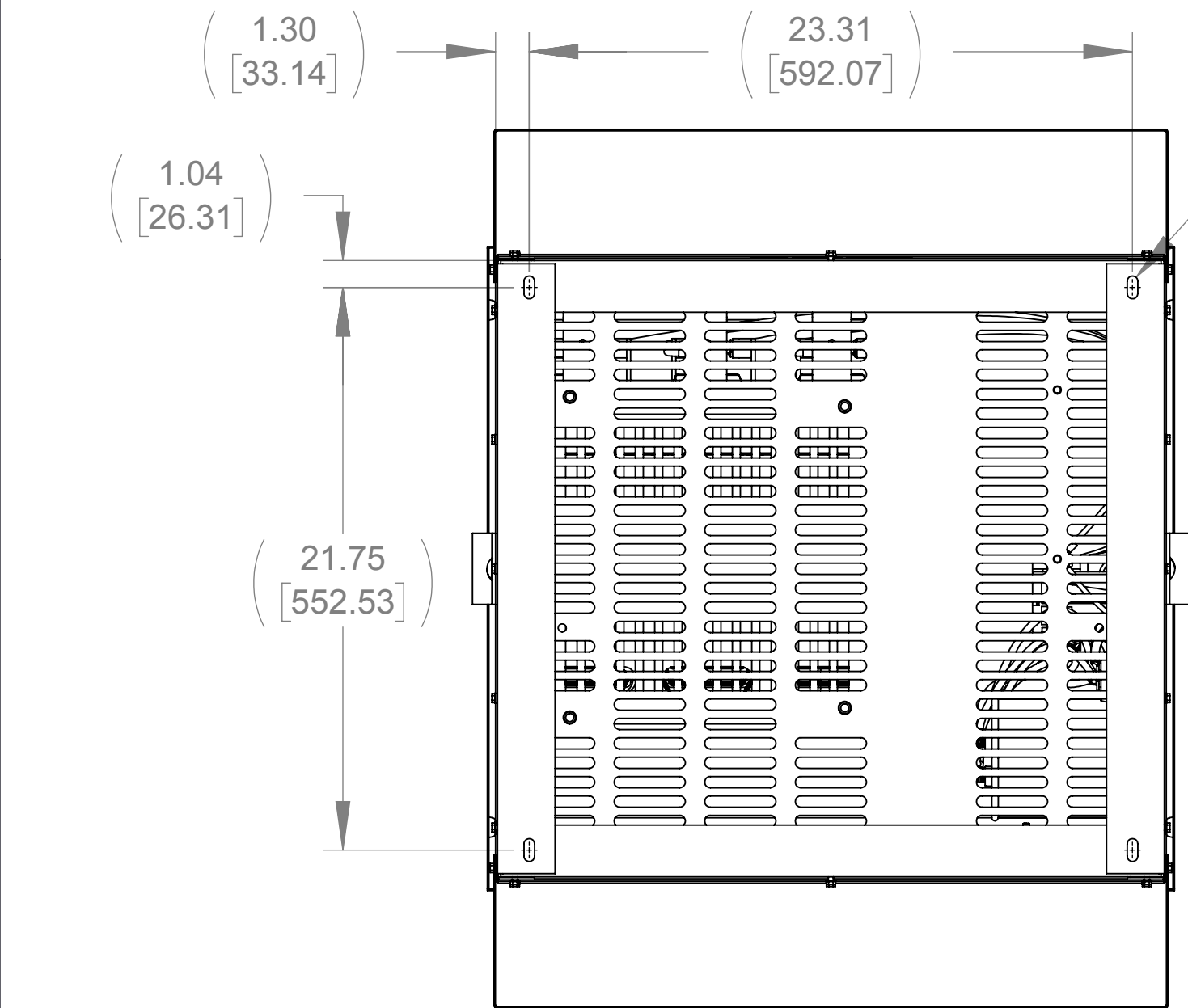


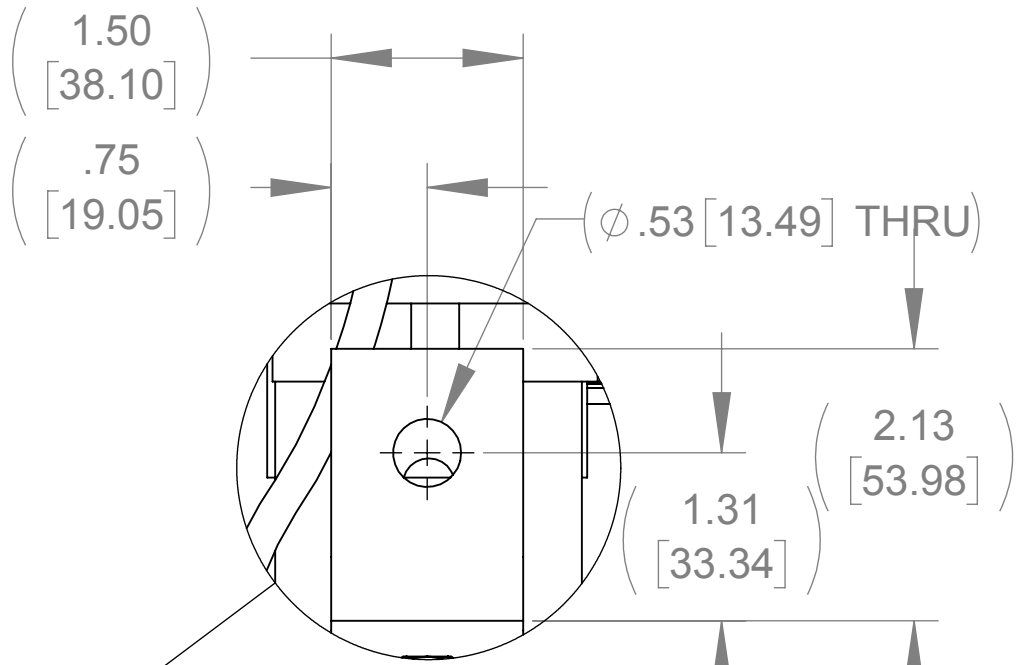
APPROX. WEIGHT
(LBS)
687



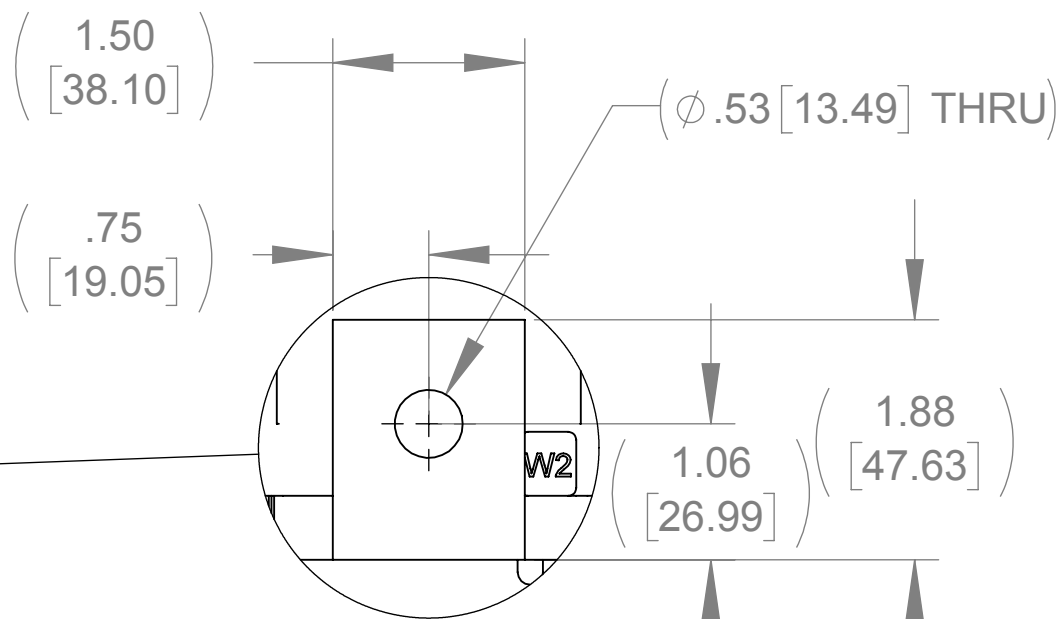
FRONT VIEW
(PANELS REMOVED)



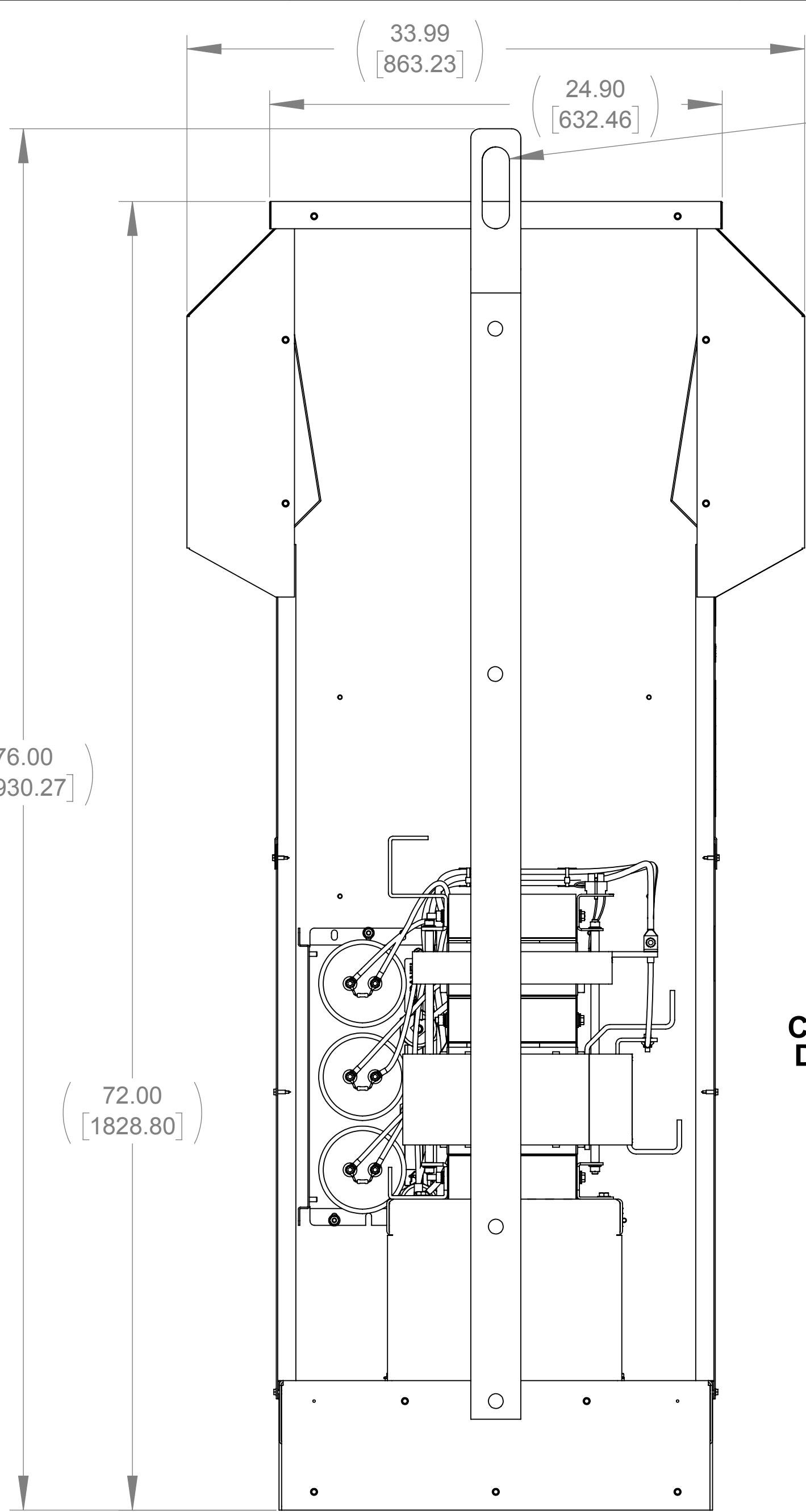
BOTTOM VIEW



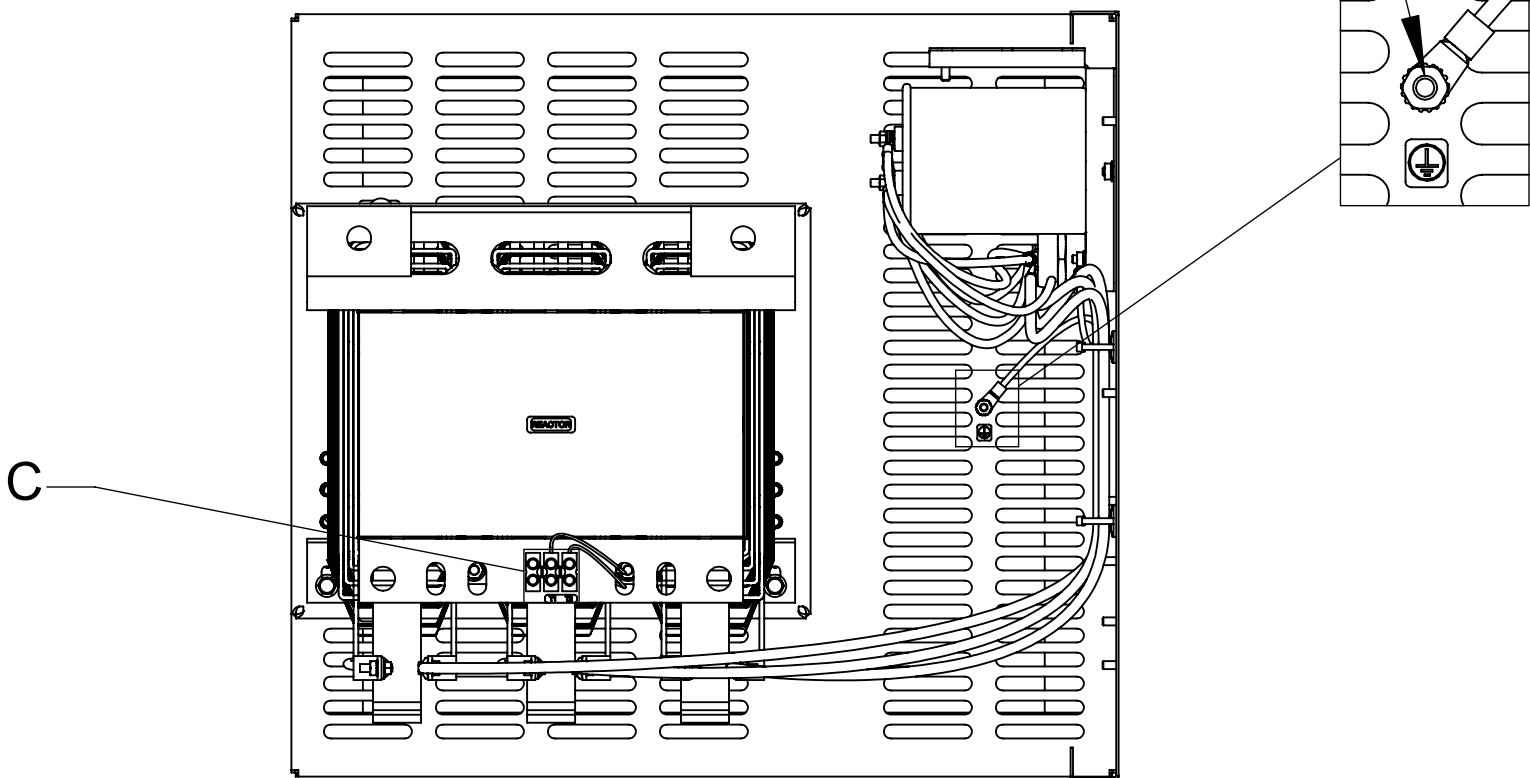
DETAIL A
(3 PLACES)



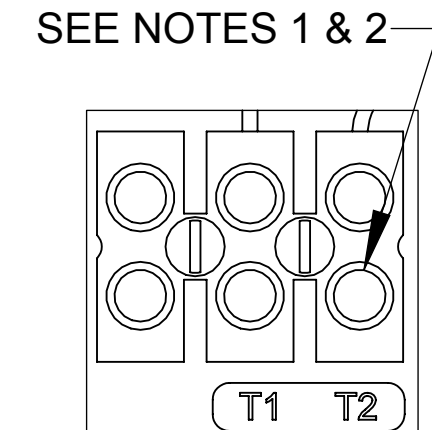
DETAIL B
(3 PLACES)



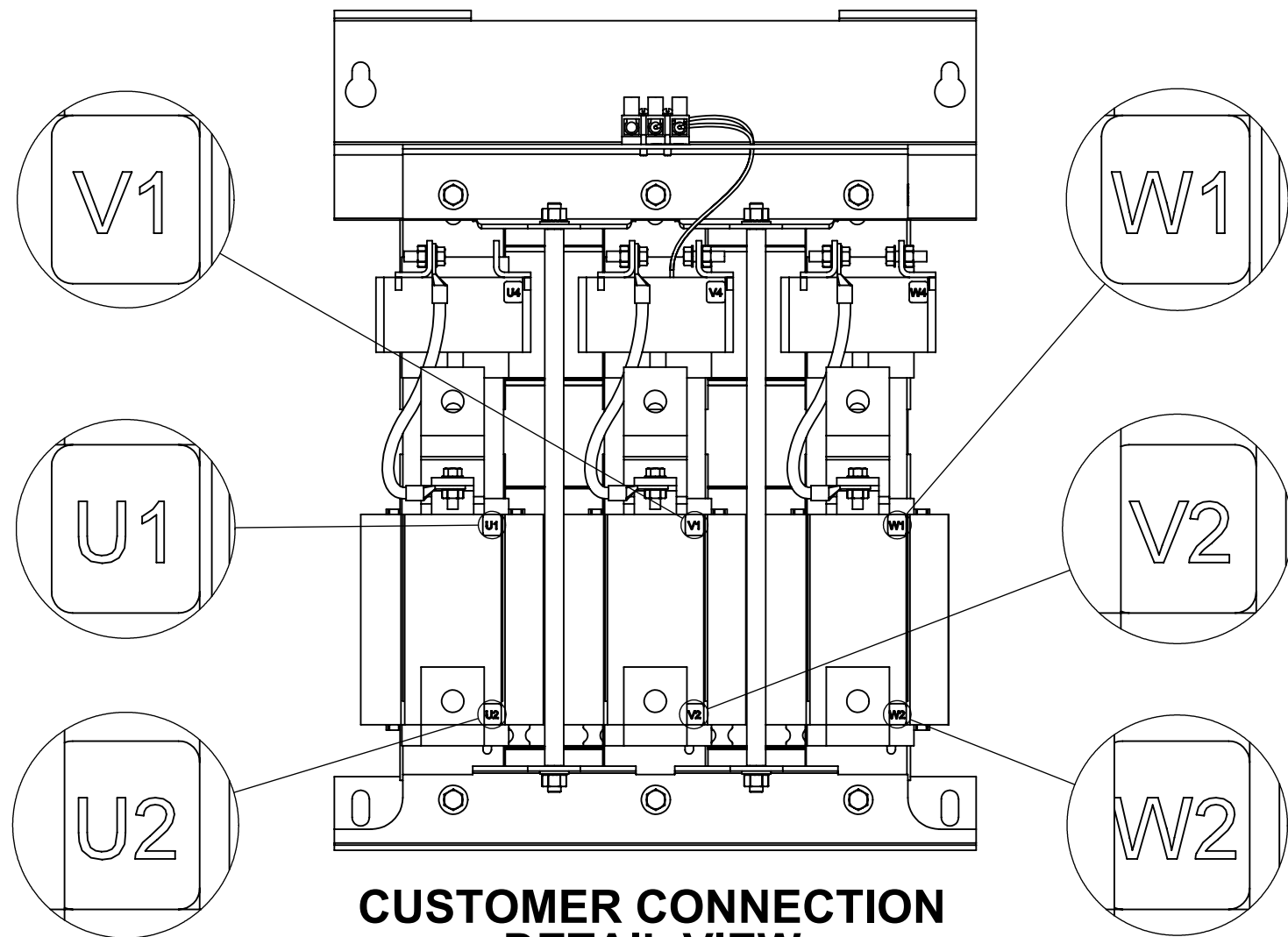
SIDE VIEW
(PANELS REMOVED)



TOP VIEW
(PANELS REMOVED)



DETAIL C
CUSTOMER CONNECTION
DETAIL VIEW (THERMAL)



CUSTOMER CONNECTION
DETAIL VIEW

NOTES:

1. TERMINAL SCREW TIGHTENING TORQUE: 16 IN/LBS.
2. WIRE RANGE: 4 - 14 AWG.

THE COMPONENT, PART OR ASSEMBLY DESCRIBED IN THIS DOCUMENT MUST COMPLY WITH THE EU(EUROPEAN UNION) DIRECTIVE RoHS2		MATERIAL		CONFIDENTIAL AND PROPRIETARY INFORMATION THIS DOCUMENT CONTAINS CONFIDENTIAL AND PROPRIETARY INFORMATION OF MTE CORPORATION AND MAY NOT BE USED, COPIED OR DISCLOSED TO OTHERS EXCEPT WITH THE AUTHORIZED WRITTEN PERMISSION OF MTE CORPORATION			
CONTAINS <0.1% OF ANY SVHC BY WEIGHT PER REACH REGULATION							
<div>UNLESS OTHERWISE SPECIFIED DIMENSIONS ARE IN INCHES [MM] TOLERANCES ARE:</div> <div>ANGLES: ± 1 °</div> <div>1 PLACE .X: ± .1 [2.5]</div> <div>2 PLACE .XX: ± .03 [0.76]</div> <div>3 PLACE .XXX: ± .010 [0.254]</div> <div><div><div>MTE</div><div>AN BL POWER ELECTRONICS COMPANY</div></div><div>N83 W13330 Leon Road Menomonee Falls, WI 53051 USA 800.455-4683 262.253-8200</div></div>		DRAWN		DATE		DESCRIPTION MATRIX AP 240A 600V 60HZ FILTER, NEMA 3R ENCL	
		MM		01/02/14			
		CHECKED		DATE			
		JM		08/16/16			
		APPROVED		DATE			
JM		08/16/16		SIZE	DWG No.	REV	
				D	CD MAPW0240E	05	
				SCALE	1:6	SHEET 1 OF 1	